

SPRINTER
COPPER CANYON EDITION



SPRINTER
COPPER CANYON EDITION 

WWW.KEYSTONE-COPPERCANYON.COM | FIFTH WHEELS | WWW.KEYSTONERV.COM



252FWRLS IN SANDLEWOOD DECOR

SPRINTER

COPPER CANYON EDITION



LUXURY YOU'LL LOVE, VALUE YOU CAN LIVE WITH.

Built upon the foundation of Keystone's first product line, Copper Canyon by Sprinter "Makes Camping Easy" by combining luxury and value in one beautiful fifth wheel. And with a variety of floorplans ranging from rear living room models, side aisle models, and bunk house models, you can select the Copper Canyon that is just right for the way you live.

camping
made easy

OUTDOOR KITCHEN



ALL NEW
outdoor kitchen



SCAN TO VIEW A 360°
INTERIOR VIRTUAL TOUR



Get the free mobile app
at <http://gettag.mobi>
and scan this Tag.

DECOR

- A. BLACKSTONE
- B. SANDLEWOOD
- C. SEASCAPE

A

B

C



GOT HEAVY ITEMS?

With our full extension steel drawer guides we can handle it!



Remember we said we give you a place to store everything? Well, you can even store all of your kitchen tools out of sight with our oversized pots and pans drawer.

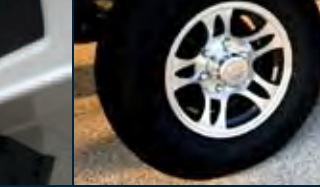
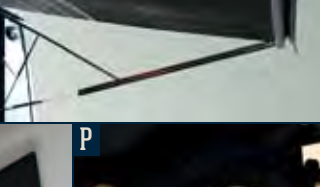
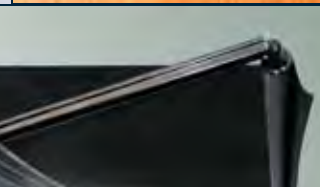
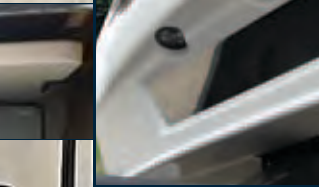
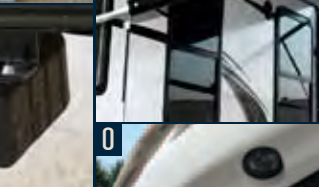
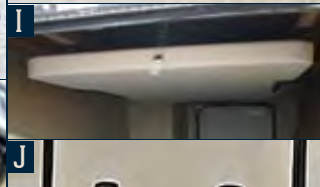
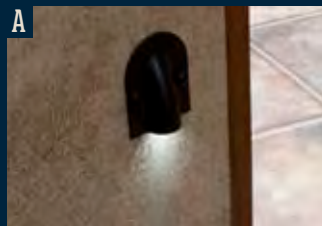


NEED SOME REST?

With our plush new Memory Foam Mattress you will awake rejuvenated and ready for a new day of activities!



252FWRLS IN SANDLEWOOD DECOR



FEATURES

A. LED FLOOR LIGHTING

B. EXTERIOR BACK UP LIGHT

C. SPACIOUS PASS THROUGH STORAGE

D. ENTRY STEPS WITH LIGHT

E. BATTERY DISCONNECT

F. EXTRA LARGE GRAB HANDLE

G. DIGITAL THERMOSTAT

H. EXTERIOR TOY LOCK

I. EASY STORE PICNIC TABLE

J. SLAM BAGGAGE DOORS

K. FULLY ENCLOSED UNDERBELLY

L. DOCKING STATION

M. COMMAND CENTER

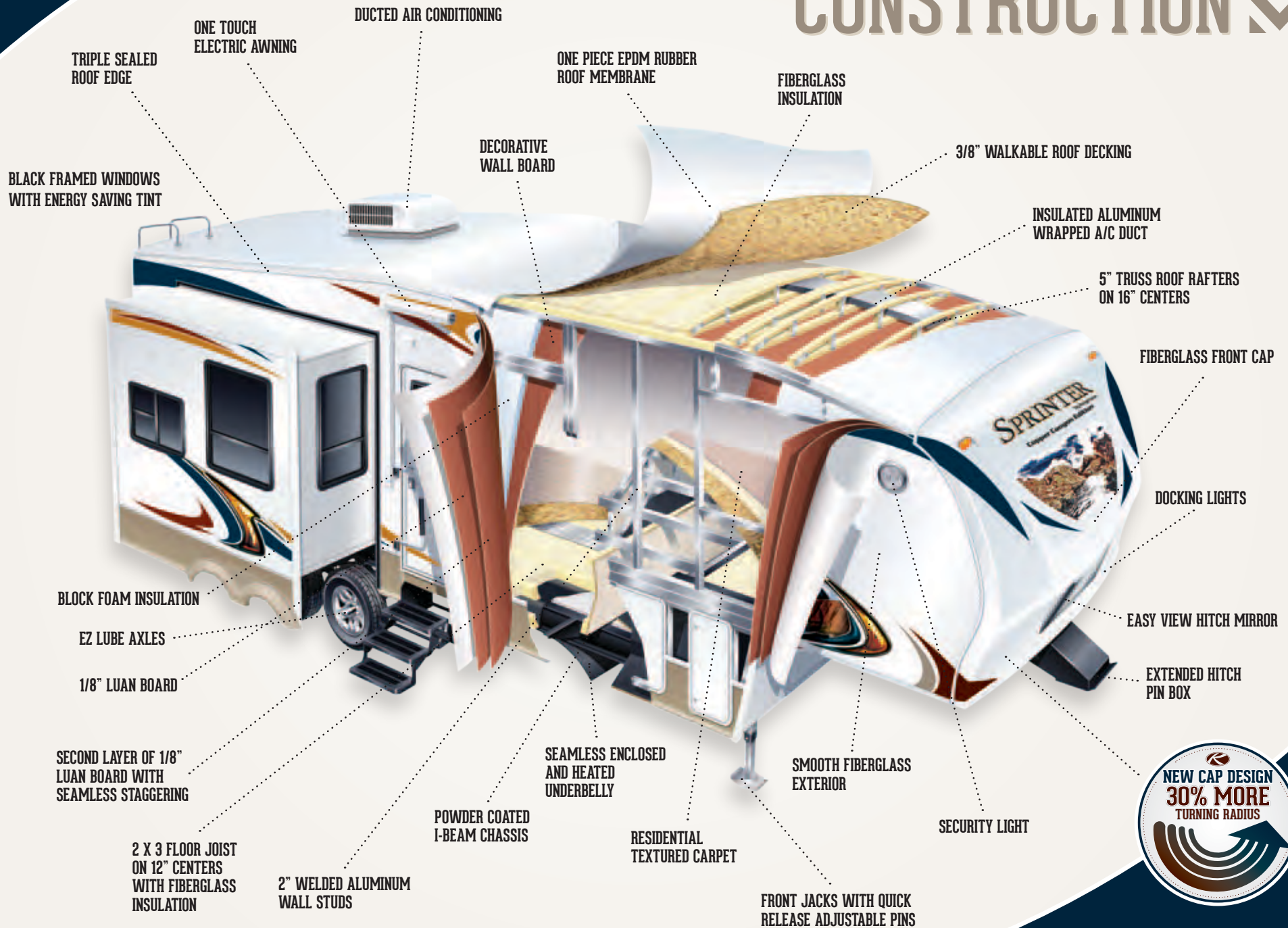
N. ELECTRIC AWNING

O. LED LIGHTED EZ VIEW HITCH MIRROR

P. ALUMINUM WHEELS

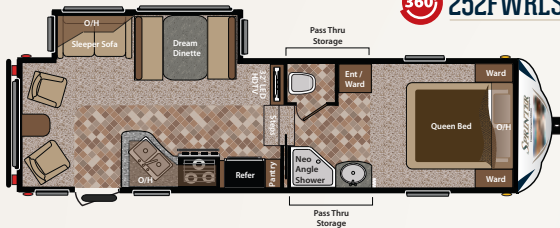


CONSTRUCTION

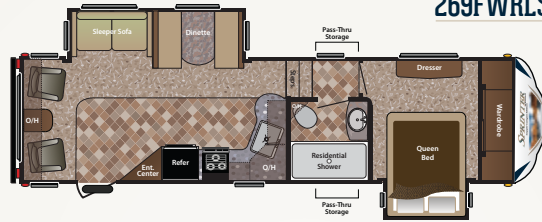


FLOORPLANS

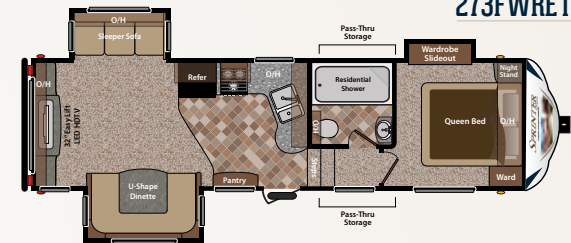
360° 252FWRLS



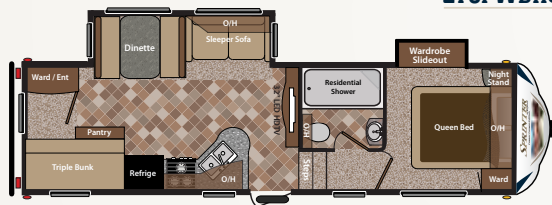
269FWRLS



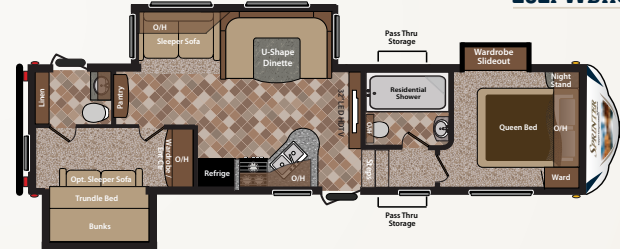
273FWRET



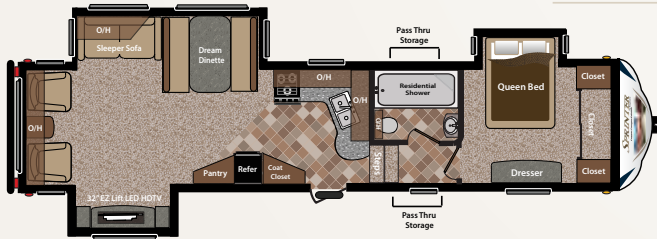
275FWBHS



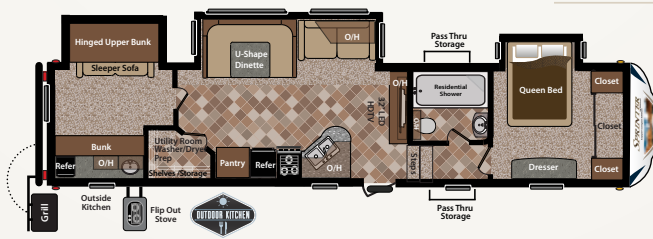
292FWBHS



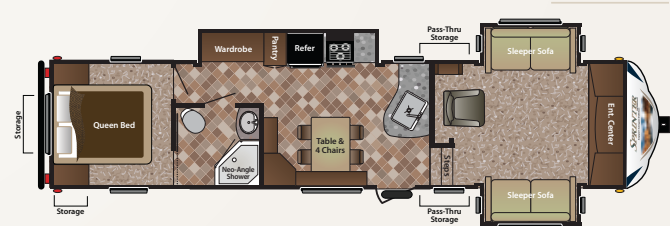
314FWRLS



324FWBHS



333FWFLS



MODEL	252FWRLS	269FWRLS	273FWRET	275FWBHS	292FWBHS	314FWRLS	324FWBHS	333FWFLS
SHIPPING WEIGHT	7184	8645	7990	7840	9311	9673	10690	9570
CARRYING CAPACITY	2936	3355	2395	2675	2594	2827	3470	3180
HITCH WEIGHT	1320	1705	1585	1715	1745	1920	2160	2002
EXTERIOR LENGTH	28' 11"	32' 7"	30' 11"	31'	34' 7"	36'	38' 6"	37' 4"
EXTERIOR HEIGHT	12'	12' 6"	12'	12'	12'	12' 8"	12' 8"	12' 6"
FRESH WATER	44	49	47	44	47	47	47	49
WASTE WATER	32	32	32	32	64	32	32	32
GRAY WATER	64	32	32	64	64	32	96	64
LPG CAPACITY LB.	60	60	60	60	60	60	60	60

WEIGHTS & MEASUREMENTS

DISCLAIMER: Product information is as accurate as possible as of the date of publication of this brochure. All features, floor plans, and specifications in this brochure are subject to change without notice. Please also consult Keystone's web site at www.keystonerv.com for more current product information and specifications. Tow Vehicle Disclaimer. CAUTION: Owners of Keystone recreational vehicles are solely responsible for the selection and proper use of tow vehicles. All customers should consult with a motor vehicle manufacturer or their dealer concerning the purchase and use of suitable tow vehicles for Keystone products. Keystone disclaims any liability or damages suffered as a result of the selection, operation, use or misuse of a tow vehicle. KEYSTONE'S LIMITED WARRANTY DOES NOT COVER DAMAGE TO THE RECREATIONAL VEHICLE OR THE TOW VEHICLE AS A RESULT OF THE SELECTION, OPERATION, USE OR MISUSE OF THE TOW VEHICLE. 09/12



Get the free mobile app at <http://gettag.mobi> and scan this Tag.

STANDARDS & OPTIONS

EXTERIOR FEATURES

- Laminated aluminum framed sidewalls
- Enclosed underbelly w/ direct vent heat
- Fiberglass front cap w/mirror and lights
- E-Z Lube axles
- One touch electric awning
- Friction hinge entry door
- Bus style slam baggage doors
- Rear bumper storage
- Easy opening triple entry step
- Entry step light
- Extra large folding grab handle
- Tough guard painted skirt metal
- Patio light
- Extra long rain gutters and spouts
- Two 30 LBS LP bottles with automatic change-over
- Battery disconnect system
- Roto-cast seamless holding tanks
- Keystone original space maker 47 gallon fresh water system
- Docking station
- Black tank flush system in docking station
- Spray port with hot and cold water in docking station
- City water connection in docking station
- Fresh water tank fill in docking station
- Cable and satellite hook-up in docking station
- 30' power cord
- LP gas BBQ hook-up
- Electric front jacks
- Radial tires
- Spare tire
- Outside speakers
- Light at termination points
- Rear ladder
- Wire and frame for a second A/C (269, 292, 314, 324, 333 only)
- 50 amp service (269, 292, 314, 324, 333 only)
- Picnic table in pass through
- Back-up light
- Toylok security system
- Easy access manual override for the slide rooms
- Upgraded two burner cooktop (Outside Kitchen models only)
- Bumper mounted grill (Outside Kitchen

models only)

- 12V Power plug (Outside Kitchen models only)
- TV hook up in pass thru storage for outside viewing
- Easy access winterization
- Jealousy windows
- 80% Tint windows
- Hitch light
- Door side and off door side clearance lights

INTERIOR FEATURES

- 13,500 BTU ducted air conditioner with "Quick Cool" (15K std in 269, 292, 314, 324 and 333)
- 30 amp electrical distribution panel (50 Amp std in 269, 292, 314, 324, and 333)
- 12 Volt, 55 amp converter
- 35,000 BTU auto-ignition furnace
- Windows in both slide room end walls
- Digital Thermostat
- Water heater bypass for easy winterization
- Residential cabinet hardware
- Large picture window at the dinette
- 6' 3" interior slide room height
- 12 volt slide room lights for dry camping
- Overhead slide room cabinets
- Screwed cabinetry w/lumber core stiles
- Beauflor linoleum
- Home theater surround sound system
- In floor ducted heat
- Command center for awning, slide-outs, tank monitors, lights and battery
- Full extension ball bearing drawer guides
- Residential slide out pantry
- LED floor lighting
- Easy find light switches
- Washer/Dryer prep (324FWBHS only)

LIVING ROOM FEATURES

- Cable TV hook-up with antenna and signal booster
- Satellite prep w/ RG6 cable
- High grade carpeting with pad
- Residential fabric-covered valances
- Angled overhead storage in the slide room
- Home theater DVD/CD/AM/FM/MP3 hook-up
- Memory foam sofa w/ storage drawer

- 32" HD LED television
- Ceiling fan with light (269, 314, 324, 333)

BATH FEATURES

- Large vanity sink
- Porcelain foot flush toilet
- Residential medicine cabinet with mirror
- ABS one piece tub surround
- Neo angle glass shower
- Skylight over tub
- Retractable clothes line in the shower/tub
- Reinforced tub support
- Power roof vent fan
- GFI receipts in the bathroom

KITCHEN FEATURES

- 6 gallon gas and electric DSI auto ignition water heater w/ 16.2 gph recovery (252, 275, and 273 only)
- 10 gallon gas and electric DSI auto ignition water heater w/16.2 gph recovery (269, 292, 314, 324 and 333 only)
- 6 Cubic ft. refrigerator std. on 252, 273, 275 (8 Cubic ft. std. on 269, 292, 314, and 333)
- 3 Burner high output gas range
- Large single bowl sink w/covers
- Full extension ball bearing drawer guides
- Metal pull-out sprayer faucet
- Waste basket storage
- Lighted range hood with exhaust fan
- Microwave with carousel
- 17" oven
- Reversible dinette seat cushions
- Double door refrigerator
- Six panel wood refrigerator front
- Raised panel cabinet doors throughout
- Overhead cabinets above the sink
- Two oversized pots and pan drawers

BEDROOM FEATURES

- Cable TV hook-up
- High grade carpeting with pad
- Under bed storage with gas struts
- Color matched bedspread
- Bedroom reading lights
- Electrical outlets near the bed
- Dream collection mattress
- Headboard niche with puck lighting

SAFETY FEATURES

- Tinted safety glass windows
- Dual hitch safety chains
- Fire extinguisher
- Smoke detector
- Carbon monoxide detector
- Egress windows
- LP gas leak detector
- Break away safety brake
- 4 wheel electric brakes
- Security light

CAMPING MADE EASY PACKAGE

- E-Z Lube axles
- Electric awning
- Battery disconnect
- Back-Up light
- Easy access manual override for the slide rooms
- Friction hinge entry door
- Toylok security system
- Picnic table in pass through
- Docking station (Includes city water, fresh water tank fill, black tank flush, spray port with hot and cold water, cable and satellite hook-up)
- LED floor lighting
- Dream collection mattress
- Gas/electric water heater with 16.2 gph recovery
- DVD theatre system with outside speakers
- Exterior BBQ hook-up
- Bumper mount grill (Outside Kitchen models only)
- Exterior speakers
- Easy find light switches
- 12V Plug in Outside Kitchen models

POPULAR OPTIONS

- 10 gallon water heater (273, **STD in 269, 292, 314, 324, 333**)
- Upgraded 15,000 BTU air conditioner (252, 273 and 275. **STD in 269, 292, 314, 324, 333**)
- Free standing dinette with four chairs
- Extra large refrigerator (252, 273 and 275. **STD in 269, 292, 314, 324, 333**)
- 68" memory foam sofa ipo lower bunk and trundle (292 only)



Go RVing



Keystone RV Company

WWW.KEYSTONERV.COM

574.535.2100 • 2642 HACKBERRY DRIVE
P.O. BOX 2000 • GOSHEN, IN 46527

WWW.KEystone-COPPERCANYON.COM