

# HIGH COUNTRY Montana

LIGHT WEIGHT, WIDE BODY LUXURY FIFTH WHEELS | UNDER 10,900 LBS.





02 **Montana** HIGH COUNTRY PHOTOS SHOW 305RL IN WALNUT DECOR

## MONTANA HIGH COUNTRY TECHNOLOGY

When the engineering, sales and purchasing team at Montana challenged themselves to reinvent the way RVs are built, the mission was clear: To create a new fifth wheel that offers unheard of weight savings without compromising size, integrity, livability or luxury. After thousands of hours of research and countless laps on the grueling Bosch Proving Grounds test track, the results are in: Montana High Country's Helium Technology combines advanced materials and manufacturing technology to significantly reduce weight while maintaining all the features, comforts and luxury you expect in a Montana. Every Montana High Country model offers 2, 3 or 4 slide-outs, full profile design, abundant storage and high-end luxury - yet weighs less than 10,900 pounds!

# MONTANA HIGH COUNTRY LUXURY

Montana High Country's new 100" wide body and trademark arched roof provide unparalleled spaciousness. Look around and find yourself surrounded by the finer things such as flush mount LED light fixtures, bright pecan cabinetry and plush leather furniture. Residential wood blinds not only create a modern and smart look, but the versatility and function of wood blinds allow you to shed as much or as little light and privacy as you wish.

The countertops are the showpiece of any great kitchen and here you'll find stunning Corian® countertops with matching Corian® flush mount sink covers and stove covers. The upscale look is further enhanced by the stylish backsplash, stainless steel appliances and brushed nickel cabinet hardware.



PHOTOS SHOW 305RL IN WALNUT DECOR

**Montana** HIGH COUNTRY 03





04

**Montana**

HIGH COUNTRY

PHOTOS SHOW 318RE IN BRONZE DECOR



The popular 318 RE offers storage solutions you would not think possible in a triple slide fifth wheel under 35' long thanks to opposing full wall slide-outs and a free standing kitchen island. The huge 70/30 stainless steel sink is mounted under the counter to maximize countertop space while the matching high rise kitchen faucet has an integrated pull out sprayer. The residential 30" wide microwave has an integrated range hood and is mounted at a very convenient height. Of course, the optional 12 cubic foot 4 door refrigerator is available on every Montana High Country floor plan.

The huge HD flat panel television is positioned for optimal viewing angles from every seat in the 318 RE living area and kitchen. The Bluetooth Jensen entertainment system is an AM/FM CD/DVD MP3 player that features wireless link technology allowing control from Bluetooth enabled smart phones to stream music and even place or receive calls through the system, which includes 4 speakers in the living area, 2 speakers in the bedroom and 2 exterior speakers.

The computer work station with optional desk chair provides the perfect place to catch up on email or surf the web. Kick back and relax on the plush leather recliners or optional theater seat. The leather hide-a-bed sofa provides a comfortable seating surface that is very easy to convert into an extra bed for guests.



PHOTOS SHOW 318RE IN BRONZE DECOR

Montana

05





06 **Montana** HIGH COUNTRY PHOTOS SHOW 293RK IN WALNUT DECOR



Gorgeous raised panel cabinet doors with pecan stain create an exceptional, bright interior. Montana High Country cabinet doors have rubber expansion balls placed between the outer frame and raised panel to protect the doors from cracking in extreme climates. Storage abounds throughout the living area and kitchen with the type of hand crafted wood cabinetry that makes Montana High Country owners the envy of their peers.

At 32' 11" long, the 293 RK is the most complete short floor plan we've ever built. The sofa and optional theater seat are perfectly positioned in relation to the desk, optional fireplace and overhead entertainment center. Generous counter space, optional 12 cubic foot 4 door refrigerator and floor to ceiling kitchen pantry are rare in this size range. Minimal carpet in the living area and kitchen enhances this floor plan's durability for travelers that like to explore more primitive camp sites.



PHOTOS SHOW 293RK IN WALNUT DECOR

Montana

07





08 **Montana** HIGH COUNTRY

PHOTOS SHOW 305RL IN WALNUT DECOR



When nothing sounds better than a relaxing evening at home, look no further than the Montana High Country bedroom. The arched ceiling provides extra head room while the deep bedroom slide-out and 100" wide body create ample walk space at the foot of the 60" x 80" queen bed. Every Montana High Country is standard with an HD flat panel bedroom television. Life on the road just got easier because the new wide body Montana High Country front closet is now prepped for a side by side washer and dryer with each appliance on a separate circuit so both can operate at the same time.



The Montana High Country bathroom feels like home with residential features like the 48" long by 30" wide seamless fiberglass shower with molded seat and glass doors, the Corian® bathroom vanity, and recessed LED lights in the ceiling. Furthermore, there is more elbow room in Montana High Country bathrooms with the new 100" wide body. On your way out the door, grip the 3" interior wall and feel the sturdy construction. Montana High Country bathroom doorways are well framed with no unnecessary gaps at the top of the door.



PHOTOS SHOW 305RL IN WALNUT DECOR

Montana HIGH COUNTRY

09

## MONTANA HIGH COUNTRY FEATURES



1



3



5

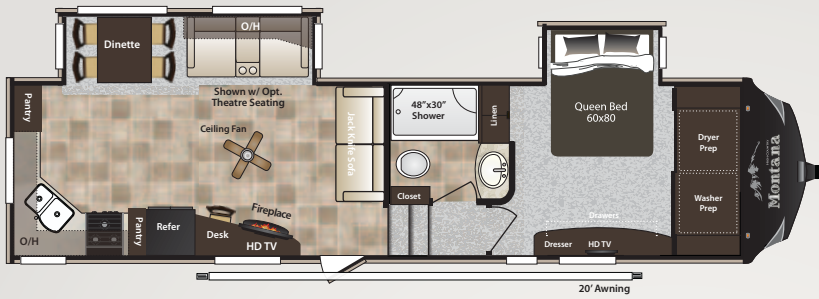


2

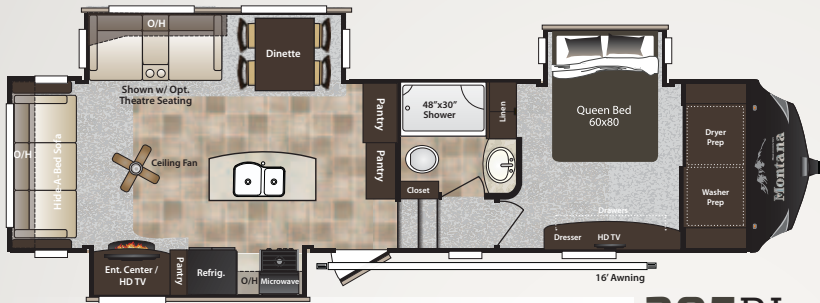


4

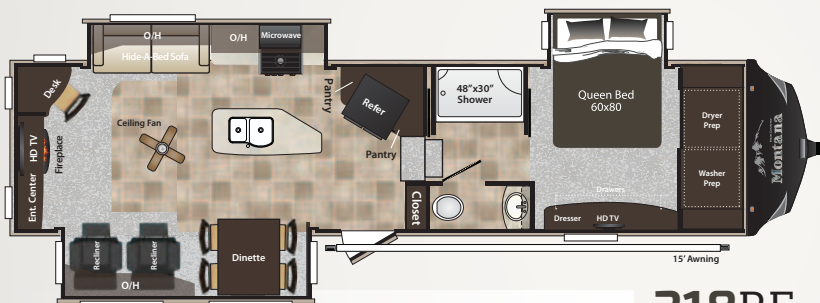
1. The automotive frameless windows enhance curb appeal and help maintain comfortable interior temperatures with deep tinting. Most of the windows are jalousie and can be vented when raining
2. AM/FM CD/DVD MP3 player featuring wireless link technology allowing control from your Bluetooth enabled smart phone to stream music & even place or receive calls through the system.
3. Giant drop frame pass through storage compartment with over 140 cubic feet of storage and flush floor lined with durable Congoleum™.
4. Premium slam latch pass through storage compartment doors with gas strut supports.
5. Exterior convenience center consolidates ext shower, battery disconnect, black water flush, easy winterization kit, enclosed low point drains, cable/satellite hook-ups in one compartment with 12v light!



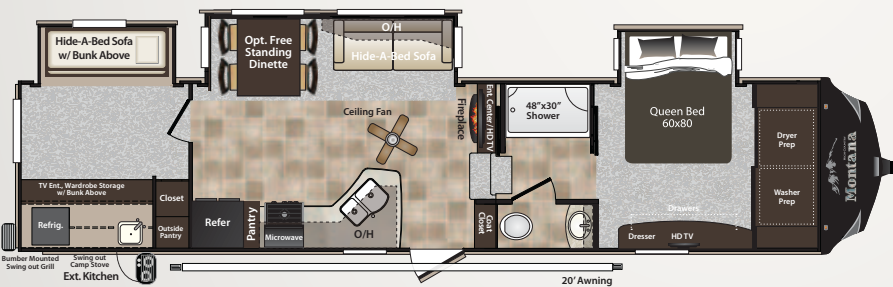
**293RK**



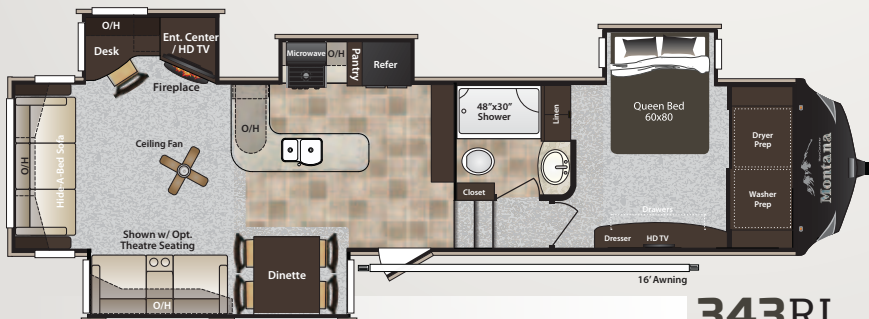
**305RL**



**318RE**



**338DB**



**343RL**



## STAY IN TOUCH

Montana High Country is always just a touch away. You'll find 360 virtual tours, location of your nearest dealer, photos, videos and all of the latest information about Montana High Country on our easy to navigate website. Everything you need can be accessed anytime, day or night, from home or on the road. You can also find us on the Keystone RV facebook.



[KEYSTONERV.COM/MONTANA-HIGH-COUNTRY](http://KEYSTONERV.COM/MONTANA-HIGH-COUNTRY)



### MONTANA HIGH COUNTRY SPECIFICATIONS

MODEL	293RK	305RL	318RE	338DB	343RL
SHIPPING WEIGHT	9560	10095	10035	10800	10580
CARRYING CAPACITY	2915	2405	2465	1700	1920
HITCH WEIGHT	2075	2175	2185	2390	2225
EXTERIOR LENGTH*	32' 11"	33' 11"	34' 5"	37' 4"	37' 3"
EXTERIOR HEIGHT	12' 9"	12' 9"	12' 9"	12' 9"	12' 9"
FRESH WATER	64	64	64	64	64
WASTE WATER	50	50	50	50	50
GRAY WATER	93	93	93	93	93
LPG CAPACITY LB.	60	60	60	60	60
TIRE SIZE	ST235/80R16E	ST235/80R16E	ST235/80R16E	ST235/80R16E	ST235/80R16E



360° VIRTUAL  
TOUR AVAILABLE AT  
[KEYSTONERV.COM](http://KEYSTONERV.COM)



**SCAN ME** >>>>

FOR MORE INFORMATION ON MONTANA HIGH COUNTRY FIFTH WHEELS ALONG WITH OTHER GREAT CONTENT

DISCLAIMER: Product information is as accurate as possible as of the date of publication of this brochure. All features, floor plans, and specifications in this brochure are subject to change without notice. Please also consult Keystone's web site at [www.keystonerv.com](http://www.keystonerv.com) for more current product information and specifications. Tow Vehicle Disclaimer. CAUTION: Owners of Keystone recreational vehicles are solely responsible for the selection and proper use of tow vehicles. All customers should consult with a motor vehicle manufacturer or their dealer concerning the purchase and use of suitable tow vehicles for Keystone products. Keystone disclaims any liability or damages suffered as a result of the selection, operation, use or misuse of a tow vehicle. KEYSTONE'S LIMITED WARRANTY DOES NOT COVER DAMAGE TO THE RECREATIONAL VEHICLE OR THE TOW VEHICLE AS A RESULT OF THE SELECTION, OPERATION, USE OR MISUSE OF THE TOW VEHICLE. \*Length is defined as the distance from the centerline of hitch pin/coupler to rear bumper of trailer. 02/14

## MOVING TO MONTANA PACKAGE

### ● Living Area Features

- » Leather Lane® recliners
- » Leather Lane® hide-a-bed sofa or jack knife sofa
- » Pecan stained cabinetry
- » Brushed nickel cabinet hardware
- » Arched ceiling
- » Flush mounted LED interior lights
- » Brushed nickel decorative light fixtures
- » Residential wood window blinds
- » Contemporary window treatments
- » Power vent fan with rain sensor in kitchen or living area
- » Ceiling fan

### ● KITCHEN FEATURES

- » Corian® kitchen countertop
- » Oversized 70/30 stainless steel sink
- » High arch kitchen faucet with integrated pull out sprayer
- » Corian® flush mount sink covers
- » Corian® flush mount solid stove cover
- » Stainless steel 30" over-the-range microwave
- » Stainless steel 22-inch oven with broiler
- » High output range with automatic igniter
- » 8 cubic foot double door refrigerator
- » Full extension drawer guides
- » Cabinet toe kicks

### ● HOME ENTERTAINMENT

- » RG-6 satellite prep
- » HD Digital TV antenna with booster
- » HD flat panel TV in living area
- » HD flat panel TV in bedroom
- » HD flat panel TV in bunkroom (338 only)
- » 12v Bluetooth AM/FM CD/DVD MP3 player home entertainment system
- 4 living area speakers
- 2 bedroom speakers
- 2 exterior speakers

### ● BEDROOM FEATURES

- » Queen (60 by 80-inch) innerspring mattress
- » Fabric bedroom headboard
- » Two bedside windows in slide out
- » Reading light over bed
- » Bedroom closet prepped for side by side washer and dryer with separate 20amp circuits for each appliance.

### ● BATHROOM FEATURES

- » Corian® bathroom vanity
- » Seamless 48" x 30" fiberglass shower
- » Sky light over shower
- » Deluxe porcelain toilet
- » 10 gallon DSI gas/electric water heater

### ELECTRICAL SYSTEMS

- » 50 AMP service
- » 75amp Converter

### COOLING SYSTEM

- » 15,000 BTU air conditioner with quick cool
- » Wire and frame for 2nd A/C in bedroom

### HIGH COUNTRY PACKAGE

#### ● CONSTRUCTION

- » Helium technology construction (Up to 2500 lbs lighter!)
- » 100" Wide body
- » Welded aluminum framed walls and floors
- » 5" Arched roof rafters
- » Glacier Package with R-10 sidewall, R-21 floor and R-38 roof insulation

#### ● TOWING

- » Max Turn front cap and radius frame with Hitch Vision™
- » MOR/ryde CRE 3000 Suspension
- » 16" Aluminum wheels
- » E-Z Lube axles
- » Back-up lights
- » Under mount spare tire and carrier

#### ● EXTERIOR

- » Black painted front cap
- » High gloss smoke gray sidewalls
- » Automotive frameless windows
- » Tread Lite™ aluminum entry steps
- » 30" Wide entry door
- » Fold away entry handle
- » Rear roof ladder
- » Enormous drop frame pass thru storage compartment
- » Slam latch pass thru storage compartment doors with gas struts

### ● EASY SET UP FEATURES

- » Remote control system for front jacks, rear jacks, slide-outs, awning and exterior lights.
- » Wide stance electric front jacks prepped for JT Strong Arms
- » Electric rear stabilizer jacks
- » 12v electric awning
- » Dual patio security lights
- » Central exterior water & convenience center
- Outside shower with quick connect hose
- Black tank flush
- Easy winterization kit
- Water heater bypass
- Power tank fill
- Enclosed low point drains
- Battery disconnect
- Cable/satellite hook-ups
- 12v light

### ● OPTIONS

- » Electric 4 point automatic leveling system
- » Dual pane frameless windows
- » Black slide-out awnings package
- » Free standing dinette with 4 chairs
- » High back desk chair
- » Leather theater seating in place of recliners
- » Electric fireplace
- » 2nd 13,500 BTU air conditioner in bedroom
- » 2nd Power vent fan with rain sensor (location varies by model)
- » 12 Cubic foot 4 door refrigerator (mandatory in the 318)

*Control Everything with a touch of the High Country Easy Set Remote Control (with LED Light):*



- Docking Lights
- Landing Gear
- Electric Awning
- Electric Slide Outs
- Electric Rear Jacks



## MAX TURN

Max Turn technology features an integrated frame and front cap design to allow for an industry best short bed truck to fifth wheel angle because the front rail of the Montana High Country frame is curved to provide more radius, making a 90 degree turn no problem with short bed trucks.

- » Montana High Country has a heavy-duty extended hitch pin.



The MOR/ryde CRE 3000 suspension increases dynamic wheel travel by up to 3" by utilizing rubber and a unique travels slot to cushion shock. Increased travel means smoother towing and better protection from damaging road shock.

## WALL CONSTRUCTION (R-10)

1. Grey high gloss fiberglass exterior walls, baggage doors and entry door
2. High density block foam insulation
3. 2" Welded aluminum sidewall studs

## ROOF CONSTRUCTION (R-38)

4. Aluminum radius roof corner molding wrap
5. One-piece EPDM roof with 12-year warranty
6. 3/8" Fully walkable roof decking
7. 5" Thick arched rafters
8. Radiant technology insulation
9. Fiberglass batten insulation

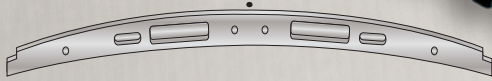
## FLOOR CONSTRUCTION (R-21)

10. Residential grade high density carpet with stain protection
11. Residential grade carpet padding
12. Laminated floor with 3" thick aluminum floor joists & high density block foam
13. Astro-foil insulation below holding tanks
14. Fully enclosed underbelly with one piece fluted polypropylene

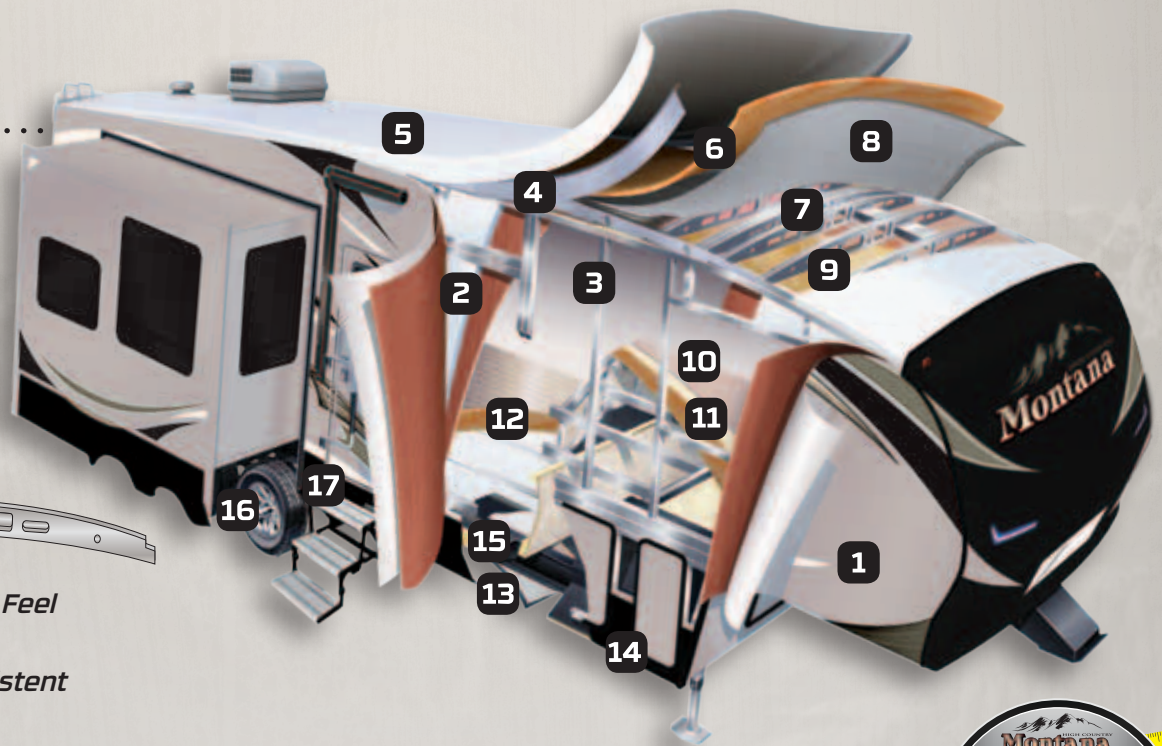
## TIRES AND CHASSIS

15. 10" Steel "powder coated" I-beam frame with drop frame pass through storage
16. 16" E-load radial tires
17. MOR/ryde CRE 3000 suspension

# 5" ARCHED ROOF RAFTER



- Provides Unique Interior Feel and Look
- 5" Thick Insulation Consistent Throughout the Roof
- Arched Rafters Provide Greater Roof Weight Distribution
- Increased Interior Height Through the Montana High Country Fifth Wheel



## MORE LIVING SPACE



VISIT OUR WEBSITE TO VIEW INTERIOR PHOTOS, 360 VIRTUAL TOURS AND MUCH MORE.



# Montana

HIGH COUNTRY

2642 Hackberry Drive  
PO Box 2000  
Goshen, IN 46527-2000  
(574) 535-2100



Keystone RV Company

WWW.KEYSTONERV.COM

FEB. 2014

YOUR LOCAL DEALER:

## BUY LOCALLY PURCHASING YOUR RV LOCALLY

It's up to you where you purchase your new Montana High Country, but may we suggest your local dealer? Not only does it help your local economy and provide jobs, but it will also give you an opportunity to develop a service relationship with someone that will come to know you and your coach. Congratulations on finding the best built, best equipped and best value in the industry. Happy travels!