

AVALANCHE



the **NEXT GENERATION** of RVs
www.keystonerv.com/Avalanche

 **Keystone RV
Company**

TABLE OF CONTENTS

33IRE Interior	pg 4-5
355RK Interior	pg 6-7
Floorplans	pg 8-9
36ITG Interior	pg 10-11
Construction	pg 12
Standard Features	pg 13
Decor Options	pg 14
Standards & Options	pg 15

NEXT GENERATION *Comfort*

-4° Outside



72° Inside

COMFORT INDOORS

With an impressive list of industry- leading construction advancements, Avalanche sets the bar in four season living. But don't just take our word for it — look at these official test results from a world leader in heating and cooling technology — Dometic Corporation. Subjected to below zero temperatures inside their legendary test chamber, the following temperatures were recorded inside an Avalanche with the thermostat set at 74°;

Living room	72°
Bedroom	70°
Bathroom	75°
Pass-Thru/Utility Center....	58°*

Of course, inside temperatures are only part of the story. With our industry leading “Therma-Shield 37” package, all the holding tanks and dump valves remained completely operational on our test unit with recorded temperatures consistently above 50° in these critical areas.

Not everyone needs this kind of protection, but when four season comfort becomes important, make sure you demand the very best... demand an Avalanche!

*Testing was done in a controlled independent environment.



AVALANCHE

NEXT GENERATION

Style

331RE SHOWN IN
FOREST FLOOR DECOR



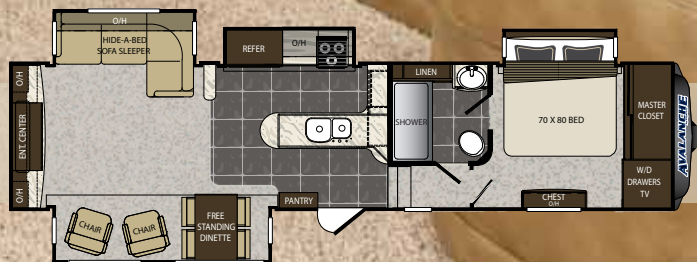
331RE KITCHEN



331RE SUMMIT SLIDE



331RE BEDROOM





**355RK BATHROOM WITH BIG SHOWER
AND 11 CU. FT. LINEN CLOSET**



**355RK L-SHAPED SOFA AND
ENTERTAINMENT CENTER**





355RK SHOWN IN
EBONY VINE DECOR

AVALANCHE
NEXT GENERATION
Design

www.keystonerv.com/Avalanche

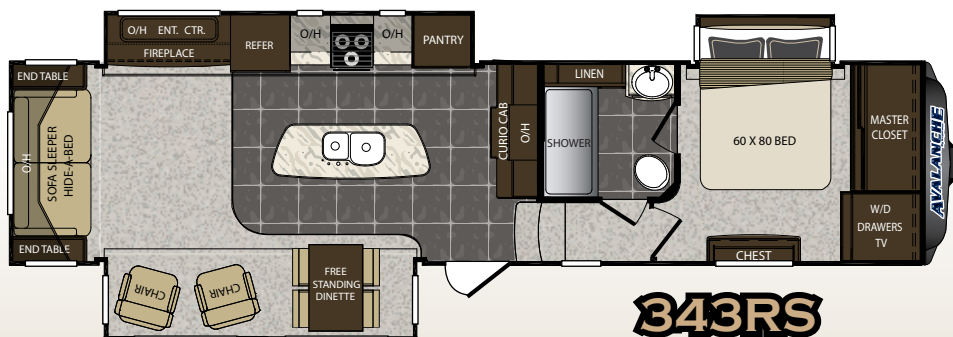
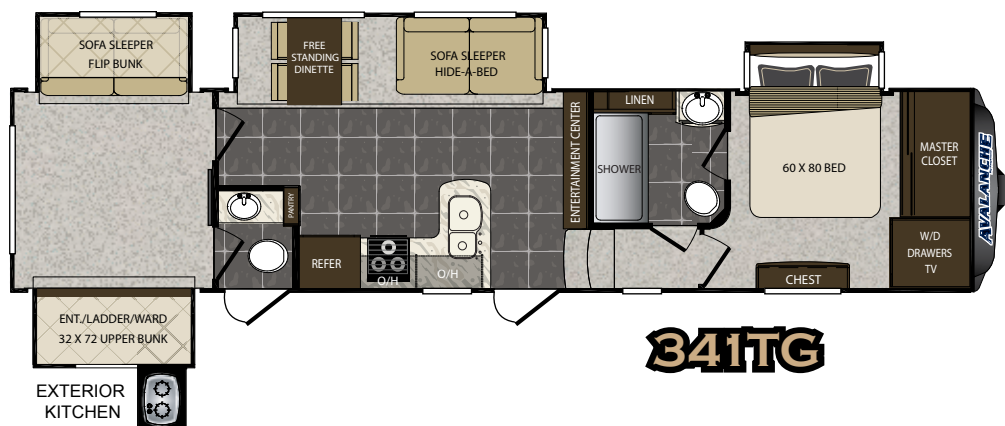
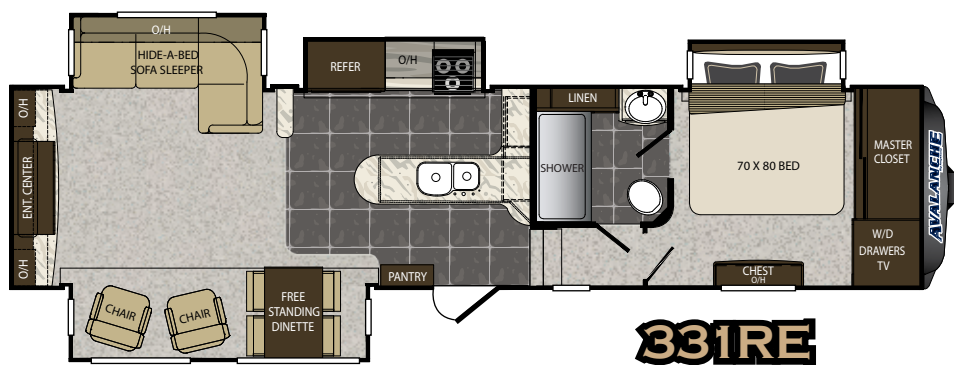
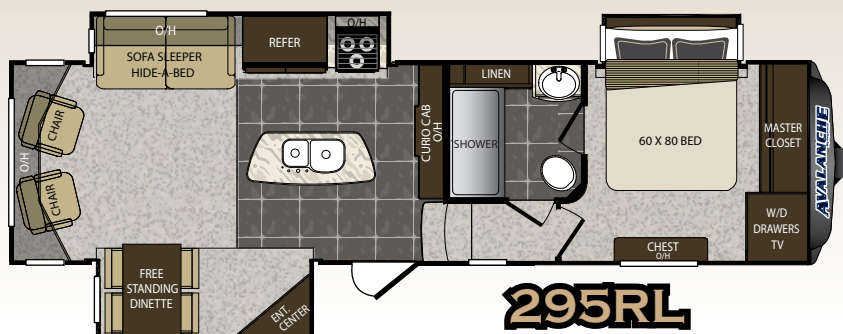
AVALANCHE FLOOR



SPECIFICATIONS

MODEL	295RL	331RE	341TG
SHIPPING WEIGHT	11080	12470	TBD
CARRYING CAPACITY	2920	3030	TBD
HITCH WEIGHT	2410	2505	TBD
EXTERIOR LENGTH	33' 11"	38' 7"	TBD
EXTERIOR WIDTH	8' 4"	8' 4"	TBD
EXT. HEIGHT - A/C TOP	12' 11"	12' 11"	TBD
FRESH WATER (GAL.)	66	66	TBD
WASTE WATER (GAL.)	50	50	TBD
GRAY WATER (GAL.)	85	85	TBD
LP CAPACITY (LBS.)	60	60	TBD
AWNING LENGTH	17'	17'	TBD

DISCLAIMER: Product information is as accurate as possible as of the date of publication of this brochure. All features, floor plans, and specifications in this brochure are subject to change without notice. Please also consult Keystone's web site at www.keystonerv.com for more current product information and specifications. Tow Vehicle Disclaimer. CAUTION: Owners of Keystone recreational vehicles are solely responsible for the selection and proper use of tow vehicles. All customers should consult with a motor vehicle manufacturer or their dealer

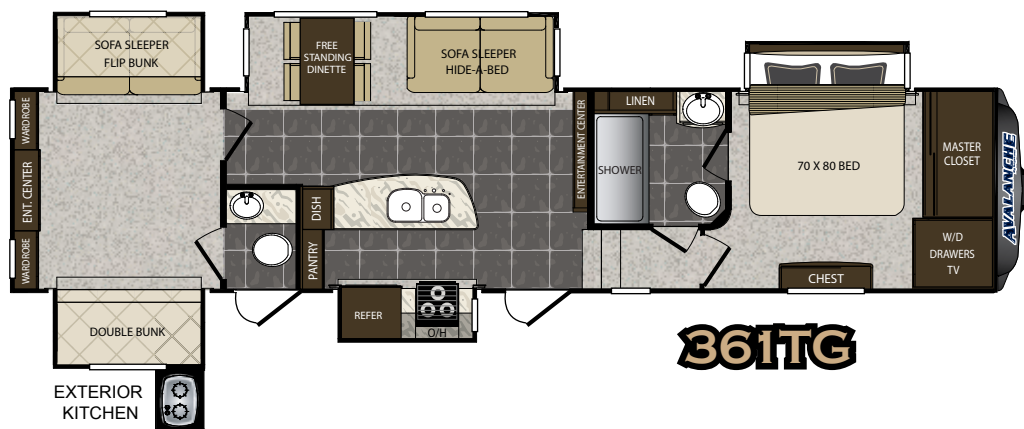
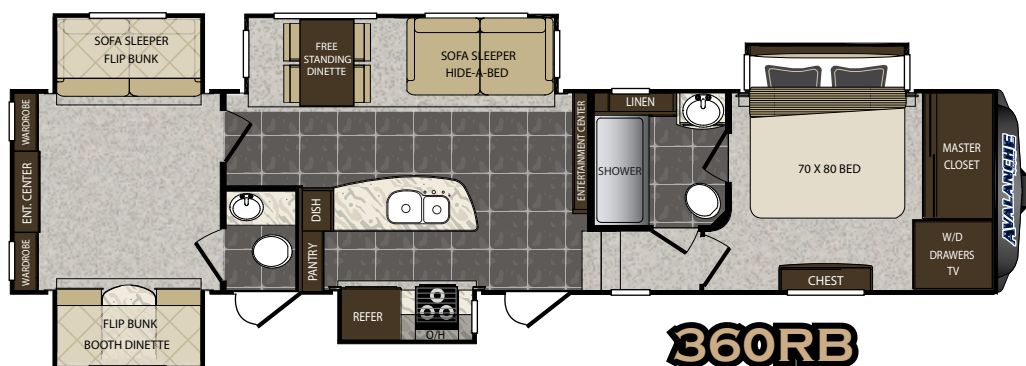
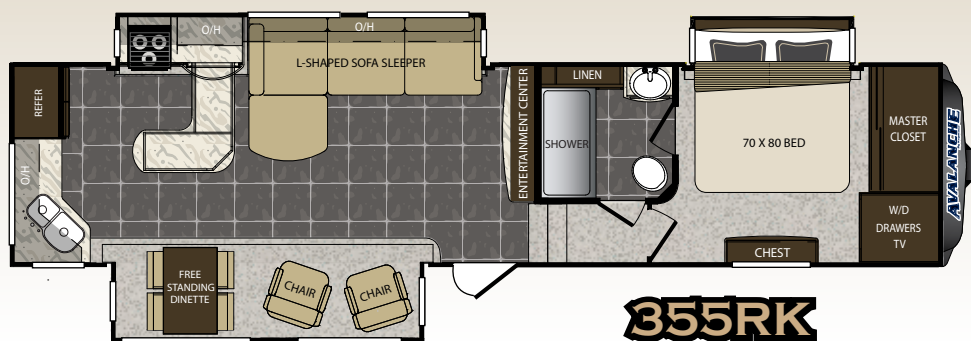




CATIONS

343RS	355RK	360RB	361TG
TBD	11890	TBD	13490
TBD	3110	TBD	2010
TBD	2865	TBD	2175
36' 11"	37' 11"	39' 8"	39' 8"
8' 4"	8' 4"	8' 4"	8' 4"
12' 11"	12' 5"	12' 11"	12' 11"
66	66	66	66
50	50	85	85
85	85	85	85
60	60	60	60
17'	17'	17'	17'

concerning the purchase and use of suitable tow vehicles for Keystone products. Keystone disclaims any liability or damages suffered as a result of the selection, operation, use or misuse of a tow vehicle. KEYSTONE'S LIMITED WARRANTY DOES NOT COVER DAMAGE TO THE RECREATIONAL VEHICLE OR THE TOW VEHICLE AS A RESULT OF THE SELECTION, OPERATION, USE OR MISUSE OF THE TOW VEHICLE. *Length is defined as the distance from the centerline of hitch pin/coupler to rear bumper of trailer. Add 6 inches for MOR/ryde pin box. ** Add 6 inches for second A/C.



Stay in Touch



Avalanche is always just a touch away. You'll find 360 virtual tours, location of your nearest dealer, photos, videos and all of the latest information about Avalanche on our easy to navigate website. Everything you need can be accessed anytime, day or night, from home or on the road. You can also find us on the Keystone RV facebook.

www.keystonerv.com/Avalanche



AVALANCHE

NEXT GENERATION
Fun

361TG BUNK ROOM



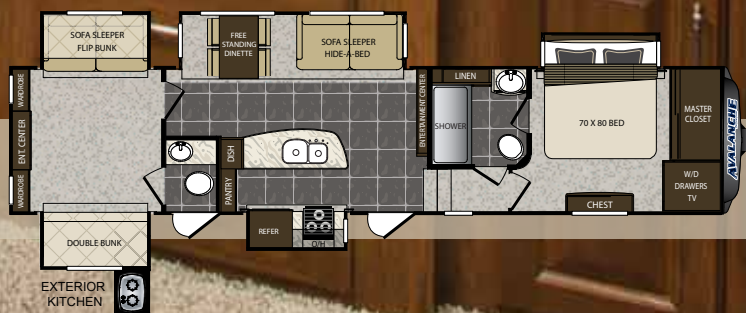
361TG KITCHEN WITH 8 CU. FT. REFRIGERATOR



361TG MASTER RETREAT WITH KING BED AND HUGE SHOWER



361TG OUTSIDE KITCHEN



AVALANCHE

-4° NEXT GENERATION *Construction*

With an impressive list of industry-leading construction advancements, Avalanche sets the bar for four season living.

WALL CONSTRUCTION (R-10)

1. Class A style "slam" baggage doors
2. Dual 1/8" luan backers with staggered seams
3. High density block foam insulation
4. Radius window corner blocks for additional integrity
5. 2" Welded aluminum sidewall studs
6. Fiberglass batten insulation
7. Thermo-foil insulation
8. Molded fiberglass cap with 4mm coated graphics
9. Metal backing strips for added support
10. Cambered steel cap backing for increased turning radius - "Max Turn"

ROOF CONSTRUCTION (R-28)*

11. Aluminum radius roof corner molding wrap
12. One-piece EPDM roof with 12-year warranty
13. 3/8" Fully walkable roof decking
14. Thermo-Foil insulation
15. Fiberglass batten insulation
16. 1/8" Ceiling Luan with vinyl protection

FLOOR CONSTRUCTION (R-40)*

17. Residential grade high density carpet with stain protection
18. Residential grade carpet padding
19. Floor wrap, wood backing, aluminum structure, high density block foam, and Astro-Foil insulation, thermo-insulation
20. Therma-Shield holding tank insulation featuring: One piece fluted polypropylene fully enclosed subfloor, fiberglass batten insulation, and ducted heat

TIRES AND CHASSIS

21. 10" steel "powder coated" I-beams
22. 16" E-Load radial tires
23. E-Z Lube 8 lug, 7,000lb axles
24. E-Z Flex suspension with steel shackles and greasable brass bushings



145 CU. FT.

A

NEXT GENERATION *Features*

A. One look at the Avalanche's **BASEMENT STORAGE** tells the story - the Avalanche boasts massive pass-through storage at over 145 cubic feet! Plus, you won't have to worry about your possessions sliding around as we've used non-skid rubber diamond plate flooring that isn't slippery like felt carpet lining.

B. LIPPERT EZ FLEX SUSPENSION

C. The Avalanche's **FULLY ENCLOSED AND HEATED "WATERWORKS"** compartment houses your dump valves, low point drains, high pressure sprayer, black tank flush hookup, quick winterization kit and city water hookups.

D. The Avalanche uses the slide out technology you see on million dollar motor coaches. These **HYDRAULIC SLIDES** quietly move in and out much faster and smoother than cable slides.

E. Storage compartments are easy to access in the Avalanche thanks to the motorhome style **"SLAM" BAGGAGE DOORS**. These compartment doors feature easy opening pad handles with locks for added security of your stored valuables.

F. Set-up and pack-up is quick and easy in an Avalanche. One reason is the **POWER FRONT AND REAR STABILIZER JACKS**, with easily accessible controls. You'll also notice that the Avalanche jacks are placed outside of the main frame rails, for a wider, more sturdy base.

B



C



F



E



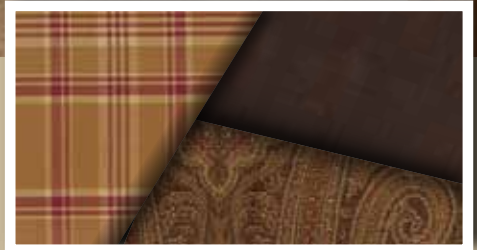
D





FOREST FLOOR

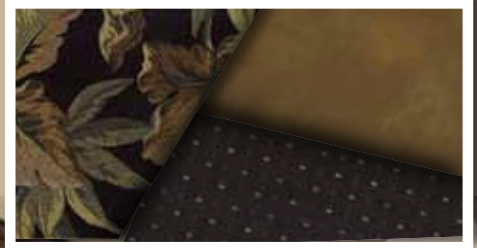
AVALANCHE INTERIOR DECOR OPTIONS



CHURCHILL



IVY LEAGUE



EBONY VINE



STANDARDS & OPTIONS

EXTERIOR FEATURES

- “No Sweat” vented attic system
- 10” Beams with Z-frame technology
- 50AMP service w/ detachable power cord
- Hydraulic selector valves for slideouts
- Power front landing jacks
- Gutters w/ rain spouts
- Rear ladder
- Tinted 80% safety-glass windows
- Super-size 6’4” tall, 30” wide entry door
- Deluxe graphics package
- One piece polypropylene underbelly
- MAX TURN high-gloss fiberglass front cap and rear with 30% better turning radius, aerodynamic design w/ 18% better drag efficiency and hitch Assist back up mirror

ALL-IN-ONE “WATERWORKS” EXTERIOR UTILITY CENTER

- Easy siphon winterization system
- Water heater bypass
- Enclosed low point drain valves
- Ducted heat for cold weather protection
- Dump valves
- 110V outlet
- Black tank spray hookup
- Hot & Cold high pressure water hose with quick disconnect

INTERIOR FEATURES

- Heavy duty residential ball bearing drawer guides
- Extra deep, fully extendable drawers
- Solid surface countertops
- Solid Surface sink cover
- Stainless steel extra deep sink with dual bowls
- High rise, single lever kitchen faucet
- Maximized kitchen storage w/ more drawers and pantry space
- Ceiling fan with upgraded lighting fixtures
- Telephone jack
- LP leak detector

- “One Place Command Center” centrally located operational switches & gauges
- Translucent glass shower door & enclosure
- Hand held massaging shower head
- Skylight over shower
- Porcelain toilet
- Single level master bedroom suite
- Designer headboard
- Cross ventilation bedroom windows where available
- Quilted bedspread and pillows

UPGRADED APPLIANCE PACKAGE

- High output range w/ 22” oven
- 12 Gallon DSI 2-way water heater
- 35,000 BTU furnace

BASE CAMP COLLECTION

- Solid cherry cabinet doors, drawers, and hardwood fascia
- “Sleep & Store” upgraded tri-fold sofa in living room
- Corian kitchen countertops and flush mounted sink covers
- Huge LED TV
- 12V AM/FM/CD/DVD home theater system w/surround sound effect speakers
- Digital TV antenna w/ built in booster
- Dual cable & satellite hookups
- Wired and braced for second A/C in bedroom
- Washer and dryer prep (combo unit)
- 50 AMP service

WHITEOUT PACKAGE

- Therma-Shield R37 Triple insulated, ducted and heated holding tanks
- Drop frame technology
- Class A bus-style latch “slam” baggage doors
- 16” E-load radial tires w/ 8 wheel lugs
- Heavy duty Easy Lube 7,000lb axles
- Electric front and rear jacks
- One-touch electric awning w/ adjustable arms
- Aluminum wheels

SUSPENSION

- Improved impact absorption
- Improved axle equalization
- Greasable “wet” bolts
- Long lasting 1/2” steel shackle plates
- Long lasting bronze bushings

COMFORT PACKAGE

- Wide body width with upgrade construction
- Summit slides with super sized windows
- Frameless windows
- Pearl oyster exterior
- Wood window blinds
- Pressurized metal Anderson valve control switch at water works area
- Wainscot with chair rail in main slide
- Hidden hinge at cabinets
- 54” stall shower with glass tri-fold and linen

OPTIONS

- Electric Fireplace
- Fantastic Fan (kitchen)
- Generator Prep
- Dual A/C Package
- 22” LED Bedroom TV
- Dual Pane Windows
- Booth Dinette
- Canadian Compliance
- RVIA Seal
- Winterization
- Go RV MEP Seal



AVALANCHE
www.keystonerv.com/Avalanche

AVALANCHE



BUY LOCALLY PURCHASING YOUR RV LOCALLY

It's up to you where you purchase your new Avalanche, but may we suggest your local dealer? Not only does it help your local economy and provide jobs, but it will also give you an opportunity to develop a service relationship with someone that will come to know you and your coach. Congratulations on finding the best built, best equipped, best value in the industry, and happy travels!

YOUR LOCAL DEALER:

VISIT OUR WEBSITE TO VIEW INTERIOR PHOTOS,
360 VIRTUAL TOURS AND MUCH MORE.



AVALANCHE

www.keystonerv.com/Avalanche



Go RVing
Life's A Trip

2642 Hackberry Drive
PO Box 2000
Goshen, IN 46527-2000
(574) 535-2100



**Keystone RV
Company**

www.keystonerv.com

Product information is as accurate as possible as of the date of publication of this brochure. Features, floor plans, and specifications are subject to change without notice. Please also consult Keystone's web site at www.keystonerv.com for more current product information and specifications. Tow Vehicle Disclaimer: CAUTION: Owners of Keystone recreational vehicles are solely responsible for the selection and proper use of tow vehicles. All customers should consult with a motor vehicle manufacturer or their dealer concerning the purchase and use of suitable tow vehicles for Keystone products. Keystone disclaims any liability or damages suffered as a result of the selection, operation, use or misuse of a tow vehicle. KEYSTONE'S LIMITED WARRANTY DOES NOT COVER DAMAGE TO THE RECREATIONAL VEHICLE OR THE TOW VEHICLE AS A RESULT OF THE SELECTION, OPERATION, USE OR MISUSE OF THE TOW VEHICLE.

November 2013