

 **Coachmen**  
Leader to the Great Outdoors.

# CATALINA

*Santara Series*

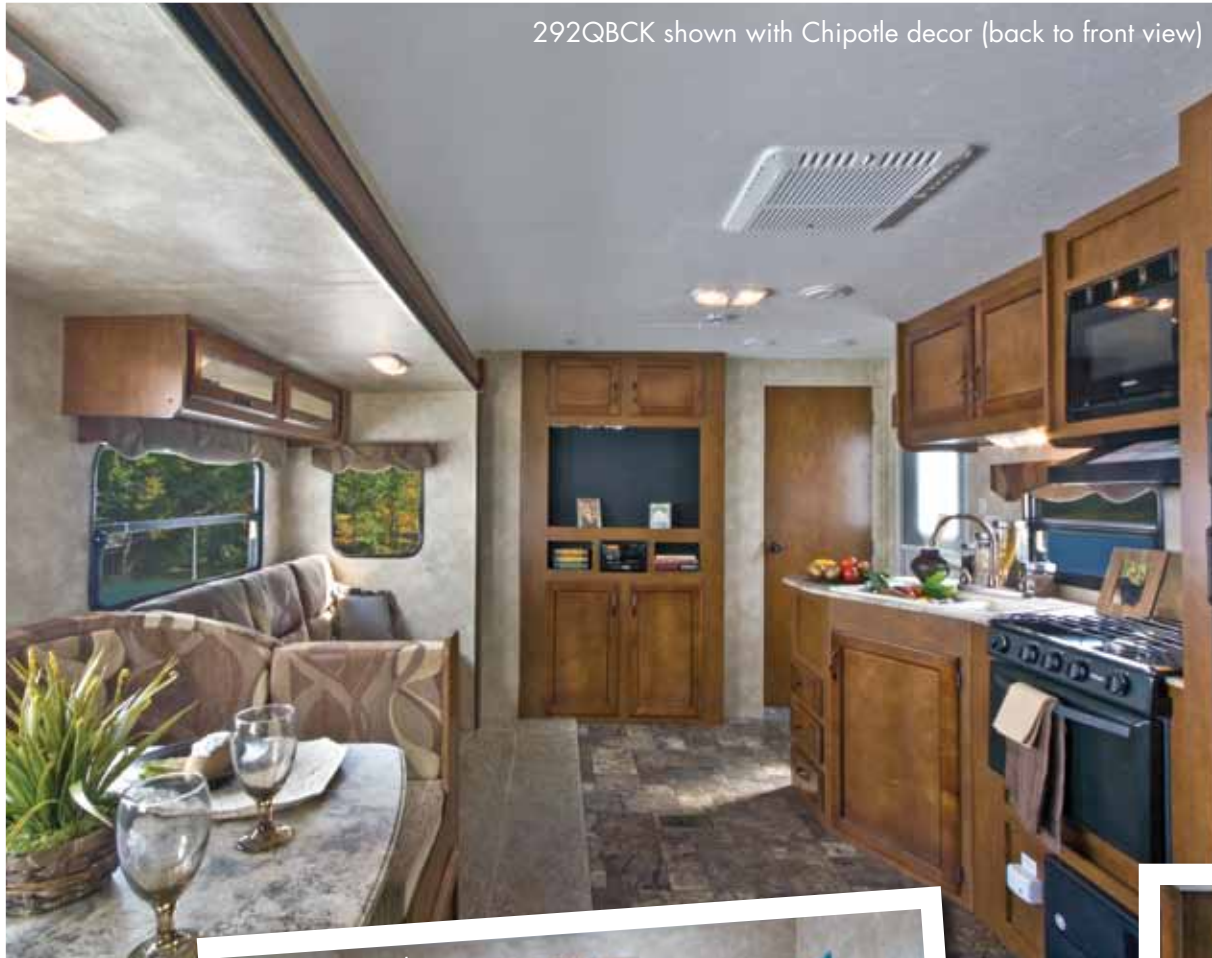


**CATALINA**  
*Santara Series*

 **Coachmen**  
Leader to the Great Outdoors.



292QBCK shown with Chipotle decor (back to front view)



Coachmen RV is proud to present the Catalina Santara Series! The Santara Series is loaded with standard features in floor plans that are light-weight and affordable. We have achieved this without sacrificing the quality that has made Coachmen famous. By holding ourselves to the highest standards in materials and construction processes, we have created a great travel trailer at a great price!

We go further than any of our competitors by offering hardwood bedroom doors (when applicable), larger dinettes and windows, tons of storage, and more sleeping space. The Santara Series defines value and style!

292QBCK bunk area



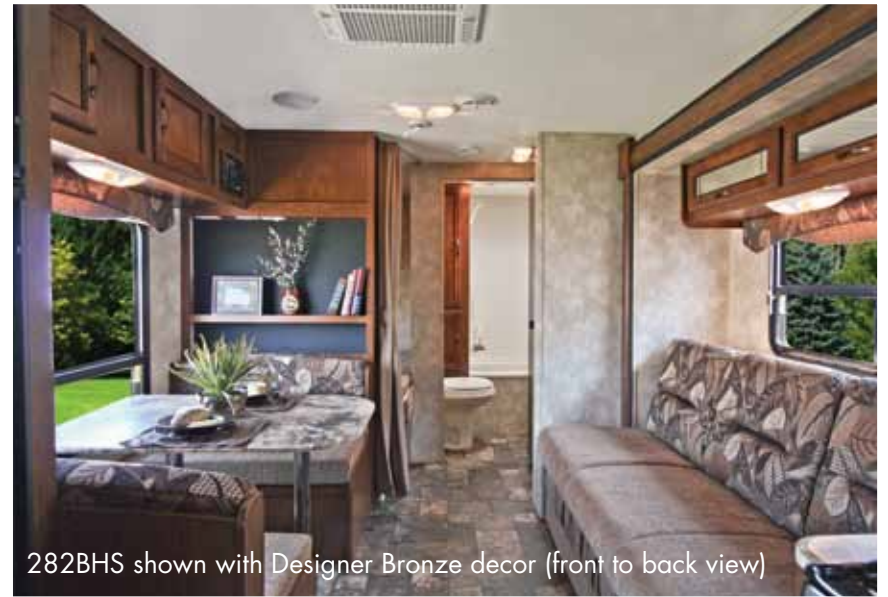
292QBCK shown with Chipotle decor (front to back view)



282BHS Kitchen area



282BHS shown with Designer Bronze decor (front to back view)



282BHS shown with Designer Bronze decor (back to front view)



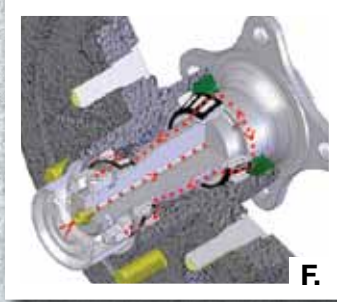
The lightweight Santara series offers floor plans from 19' to 30', with weights starting as low as 4100 lbs.. These versatile models don't sacrifice the space, storage, and comfort that you want in your camper!

**Coachmen and the Santara Series are truly leading the way to the great outdoors!**





# CUSTOMER PREMIERE PACKAGE

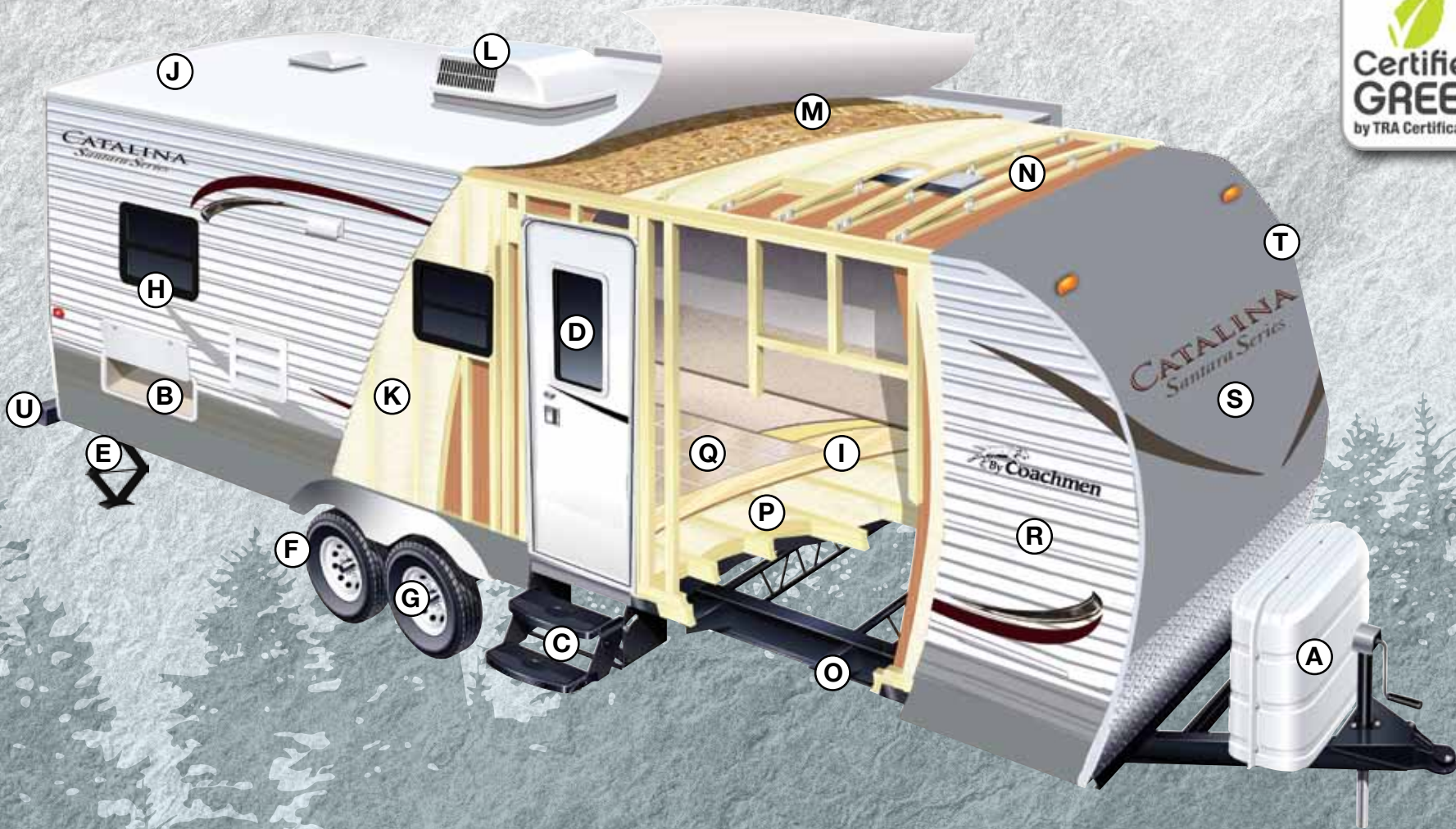


- A. 13.5K BTU roof mounted air conditioner. (Ducted A/C optional)
- B. 6 Gal. DSI remote operated water heater. (Fire up your water heater from inside your Santara.)
- C. Two (2) LP bottles with E-Z access cover with and automatic change over.
- D. Radial tires and maintenance free E-coat rims.
- E. AM/FM, CD radio with Speakers and i-Pod<sup>®</sup> docking port. More wattage for your cottage!!!
- F. Super-Lube axles for easy bearing maintenance requiring no disassembly.
- G. Aluminum fender skirts.
- H. Safety first! Lippert components ABS self adjusting brake system.
- I. Four (4) Stabilizer jacks.
- J. ABS tub and shower surround.
- K. Patio Awning





# CONSTRUCTION AND EXTERIOR FEATURES



**A.** Two (2) LP Bottles with Cover and E-Z Access Top with Auto Switch over.

**B.** Pass Through Exterior Storage

**C.** Double Entry Step

**D.** Smooth Fiberglass Radius Entry Door

**E.** Four (4) Stabilizer Jacks

**F.** Radial Tires, Polished Aluminum Fender Skirts and Maintenance Free E-Coat Rims.

**G.** Superlube™ Axles for Fast and Easy Lubrication.

**H.** Tinted Black Framed Windows with Safety Glass.

**I.** 5/8" Tongue in Groove Plywood Floor Decking-NOT OSB.

**J.** Seamless Rubber Roof (12 year Warranty)

**K.** 6-Way R-7 Fiberglass Insulation

**L.** 13.5K BTU Air Conditioner (Ducted A/C Optional)

**M.** 3/8" Roof Decking (Full Walk-On)

**N.** 5" Bowed Truss Roof Rafters

**O.** 6" or 8" I-Beam Frame

**P.** Floor Studs 12" on Center

**Q.** Resilient Sheet Flooring/3 year Warranty

**R.** .024 Aluminum Siding

**S.** Colorful High Definition Graphics Package

**T.** Smooth, Aerodynamic Metal Radius Front Cap. Better Towing, Better MPG!

**U.** Sewer Hose Holder that is Integrated into the Rear Bumper.



## CUSTOMER PREMIER PACKAGE

- 13.5K BTU Air Conditioner
- Double Door Refrigerator
- Microwave Oven
- AM/FM Stereo CD Player with i-Pod® Docking Port
- Satellite/Cable Hook-Up
- 6 Gallon Gas DSI Water Heater
- Metal Drawer Guides in Kitchen
- Bed Spread
- Patio Awning
- Aluminum Fender Skirts
- Radial Tires
- ABS Shower Surround
- Super Lube™ Axles
- Two (2) 20 Lb. LP Bottles with E-Z Access Cover
- Four (4) Stabilizer Jacks
- Water Heater Bypass with Winterization Kit

## OPTIONAL POWER PACKAGE

- Power Awning
- Electric Tongue Jack

## OPTIONS

(Customize your Santara)

- 13K BTU Ducted Air Conditioner
- 15K BTU Ducted Air Conditioner
- 3-Burner Range with Oven
- Outside Shower
- Skylight Above Tub/Shower
- Spare Tire with Carrier
- Front Diamond Plate
- Outside Speakers
- Pull-Out Camper Kitchen (272DBS & 272BH Only)
- Full Wall with Pocket Door and Wall Mirror (222FB and 272BH Only)
- Power Awning
- Electric Tongue Jack

## DECOR OPTIONS



Bazinga Stone  
Interior Option



Designer Bronze  
Interior Option



Chipotle  
Interior Option

Cognac Maple Wood Grain



Cognac Maple Door Front



Congoleum™ Tile  
Look Linoleum



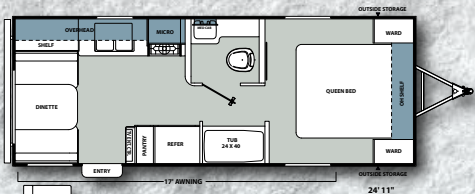
Standard Bedroom Decor-Every Bedroom has 2 Shirt Closets.



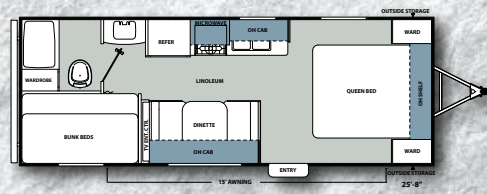
Camper Kitchen STANDARD on 292QBCK, optional on 272DBS, 272BH.



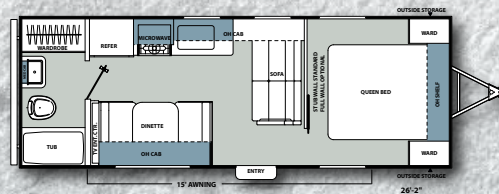
**192SD**



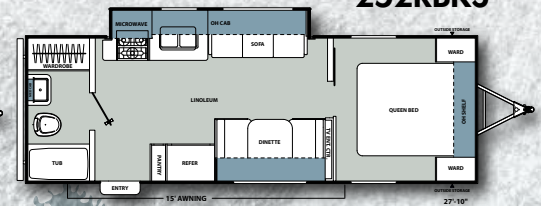
**212BH**



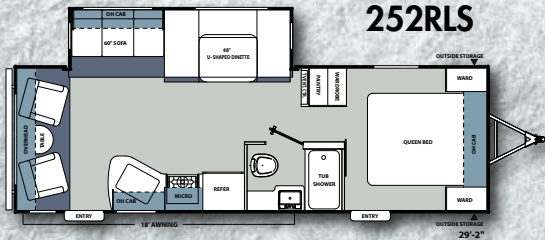
**222FB**



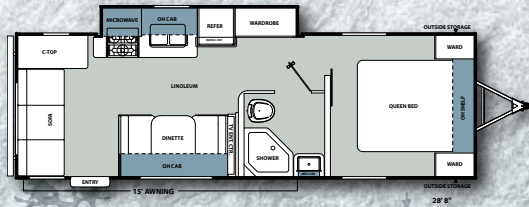
**252RBKS**



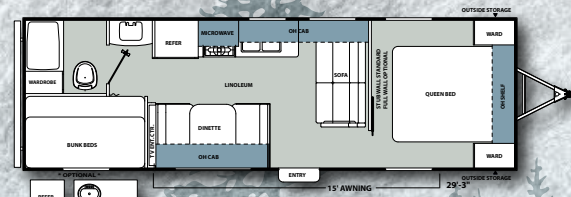
**252RLS**



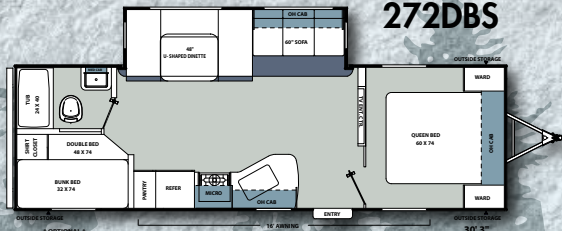
**262RLS**



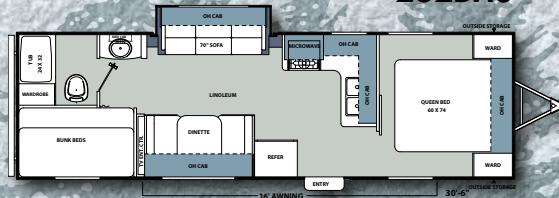
**272BH**



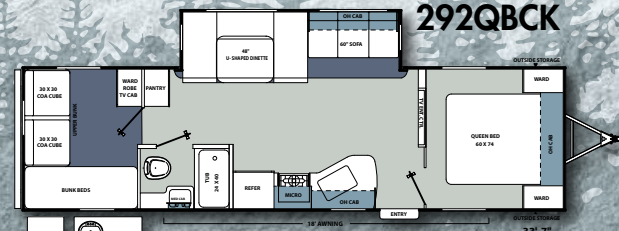
**272DBS**



**282BHS**



**292QBCK**



Model	192SD	212BH	222FB	252RBKS	252RLS	262RLS	272BH	272DBS	282BHS	292QBCK
Base Weight	4,100**	4,246	4,262	4,973	5,918	5,106	4,688	6,020	5,208	6,760
Carrying Capacity	1,630	2,754	2,738	2,027	1,723	1,894	2,312	1,680	2,392	2,740
GVWR	6,000	7,000	7,000	7,000	7,700	7,000	7,000	7,700	7,600	9,500
Hitch Weight	420	462	564	521	780	619	541	744	667	810
Exterior Height (w/A/C)	10' 5"	10' 5"	10' 5"	10' 5"	11' 1"	10' 5"	10' 5"	11' 1"	10' 5"	11' 1"
Fresh Water Cap. (gal.)	46	46	46	46	44	46	46	46	46	46
Grey Water Cap. (gal.)	32	40	40	40	40	70	40	40	40	40
Waste Water Cap. (gal.)	32	30	30	30	30	30	30	30	30	30
Awning Length	15'	15'	15'	15'	16'	15'	15'	16'	16'	18'
Exterior Length*	24' 11"	25' 8"	26' 2"	27' 10"	29' 2"	28' 8"	29' 3"	30' 3"	30' 6"	33' 10"
Exterior Width	96"	96"	96"	96"	96"	96"	96"	96"	96"	96"
Interior Height (Coach)	78"	78"	78"	78"	81"	78"	78"	81"	78"	81"
Tire Size	14"	14"	14"	14"	15"	14"	14"	15"	14"	15"

\* Exterior length includes bumper and hitch \*\*Estimated







# FREE ONE YEAR MEMBERSHIP

## Big benefits for new owners

Coachmen is proud to sponsor the largest manufacturer sponsored camping club in North America ... Coachmen Owners' Association (COA). COA provides you a world of ways to enjoy your RV. This is FUN ON OVERDRIVE and provides: Free Trip Routing, Exciting Tours & Rallies, Free Campground Directory, Local/State Club Activities, Easy RVing Magazine Free, Theme Park Discounts, Fuel Discounts, Free onebigplanet® Memberships with discounts at 180,000 merchants and Much More! Every new Coachmen RV buyer is eligible for a 1 Year **FREE** membership in the Coachmen Owners' Association. It all adds up to an easy ownership experience!

## Travel Easy™ Roadside Assistance

RVing is easier with Coachmen's Travel Easy™ Roadside Assistance provided **FREE** the first year of ownership to those who purchase a New Coachmen RV. Administered by Coach-Net, this service provides you with 24/7 operational, technical and emergency road service coverage. Also included is towing, fuel delivery, jump starts, lockout service, tire changes, mobile mechanic and unlimited technical assistance. Anywhere. Anytime. Travel Easy™ is the security of knowing that help is an easy phone call away.



All information contained in this brochure is believed to be accurate at the time of publication. However, during the model year, it may be necessary to make revisions and Coachmen reserves the right to make all such changes without notice, including prices, colors, materials, equipment and specifications as well as the addition of new models and the discontinuance of models shown in this brochure. Therefore, please consult with your Coachmen dealer and confirm the existence of any materials, design or specifications that are material to your purchase

To learn more about Coachmen RV and our products and see how Coachmen is leading the great outdoors, visit [www.coachmenrv.com](http://www.coachmenrv.com)



# Coachmen

Leader to the Great Outdoors.

Coachmen RV  
Catalina Division  
423 N. Main St./P.O. Box 30  
Middlebury, IN 46540



**Learn More**  
Scan this barcode using a QR Reader on your smart phone to learn more about Forest River.



A Berkshire Hathaway company.

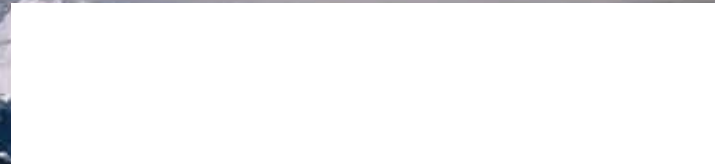


Forest River, Inc. encourages our customers to purchase their Forest River products from a local dealership whenever possible for the following reasons:

- 1) Forest River, Inc. dealers are independently owned and operated businesses so priority service and scheduling is at their discretion and is often provided to customers that purchased their unit at that dealership.
- 2) Purchasing locally allows customers to establish meaningful relationships with a dealer, enhancing the RV experience through assistance with product questions, user tips or RV regulations for your state or country, and much more!
- 3) Canadian customers must meet requirements to bring an RV purchased out of the country to their home. These requirements may involve additional inspections and certifications, taxes and fees. Your local Canadian Dealer is a professional at meeting these requirements.
- 4) Scheduling timely warranty repairs and adjustments through a local dealership provides far greater flexibility and convenience to you, the customer!

It is the goal of Forest River, Inc. that all of our RV owners fully enjoy the RV experience and that customer satisfaction meets or exceeds their expectations!

YOUR SANTARA DEALER



© Copyright 2012 Coachmen RV, a Division of Forest River Inc., A Berkshire Hathaway company. All Rights Reserved