

LONGHORN

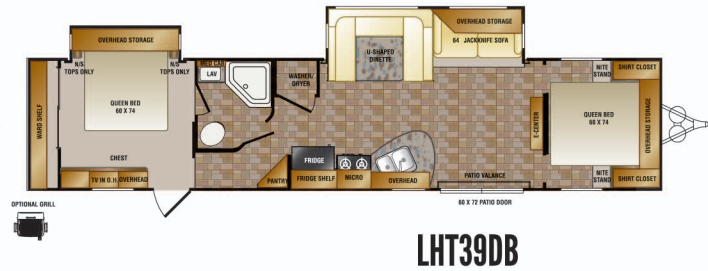
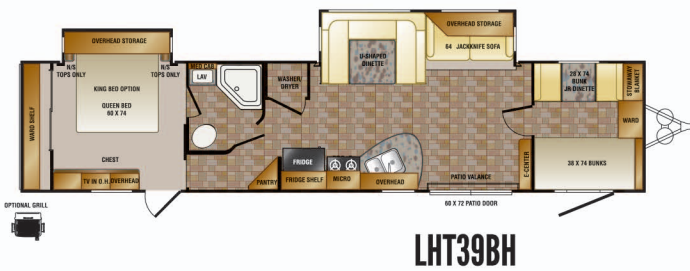
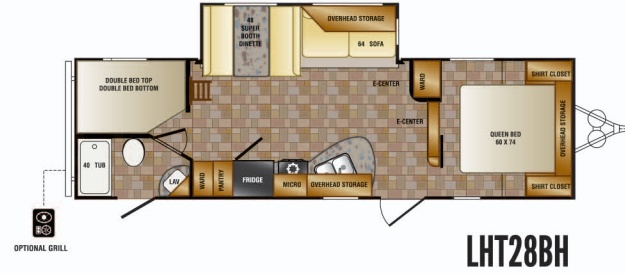
Texas Edition



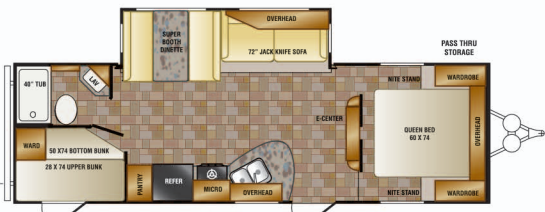
The Texas edition of the LONGHORN was designed to give you the best RVing experience possible. Options are standards in the LONGHORN: aluminum rims, rear ladder, and many other upgrades. In every floor plan, the LONGHORN living spaces are decorated with a special Texas flair. The LONGHORN's standards provide you with all the comforts of home. The interiors are a full 7' tall, and all the countertops are solid surface. Even in the Texas heat, indoor comfort is assured with the 15,000BTU air conditioner. Electric awnings make it easy to enjoy the outdoors from the shade. Add in the 1-year warranty, and the LONGHORN is your passport to the RV experience you've been waiting for.



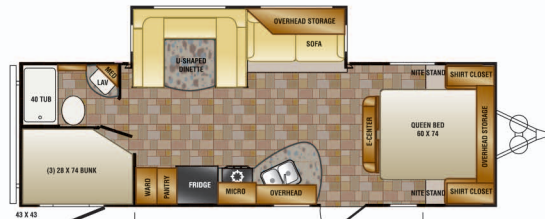
LONGHORN



LONGHORN	LHT25RB	LHT25SB	LHT26BH	LHT26DT	LHT27RL	LHT28BH	LHT30KB	LHT30RK
SHIPPING WEIGHT	6191	5935	5958	6396	6520	5264	6881	6830
GVWR	7774	7667	7788	7916	7687	7850	9562	9244
CARRYING CAP	1583	1732	1830	1520	1167	1596	2681	2414
HITCH WEIGHT	774	667	788	916	687	850	962	644
AXLE WEIGHT	5417	5268	5170	5478	5833	5404	5919	6186
EXTERIOR LENGTH	29' 4"	28' 10"	30' 3"	29' 11"	31' 11"	31' 10"	33' 10"	33' 8"
EXT. HEIGHT W/AC	11' 5"	11' 5"	11' 5"	11' 5"	11' 5"	11' 5"	11' 5"	11' 5"
FRESH WATER	54	54	54	54	54	54	54	54
BLACK WATER	40	40	40	40	40	40	40	40
GRAY	40	40	40	40	40	40	40	80
TIRE SIZE	205/75R15C	205/75R15C	205/75R15C	205/75R15C	205/75R15C	205/75R15C	225/75R15D	225/75R15D



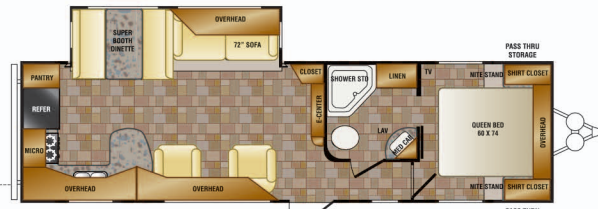
LHT26BH



LHT26DT



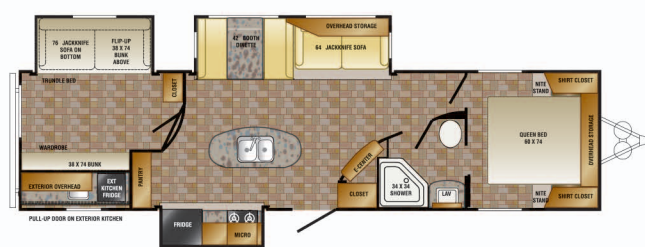
LHT30KB



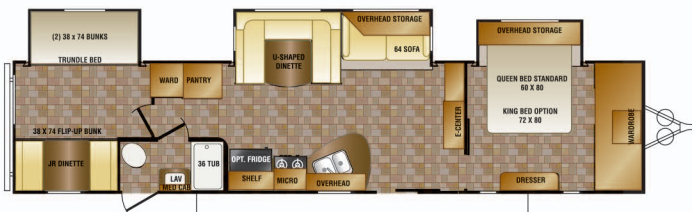
LHT30RK



LHT32RE



LHT33BH



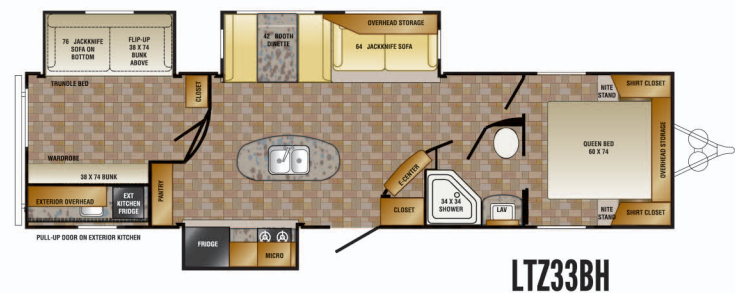
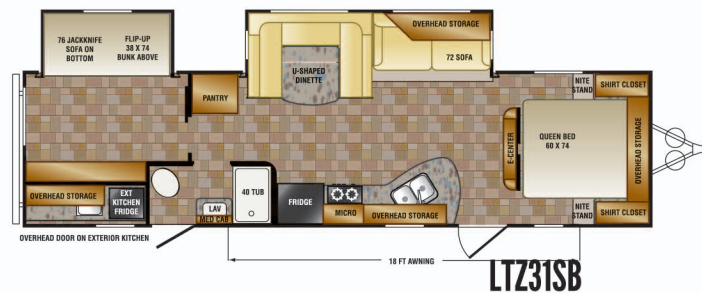
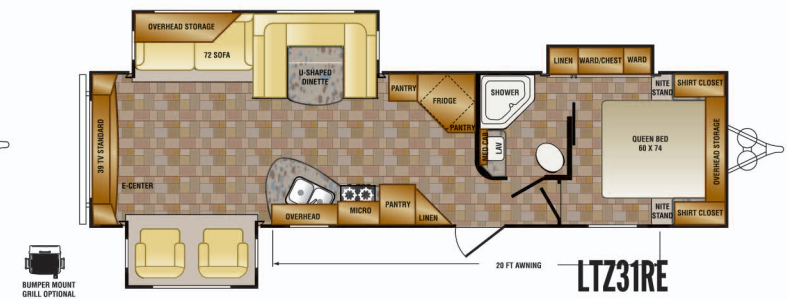
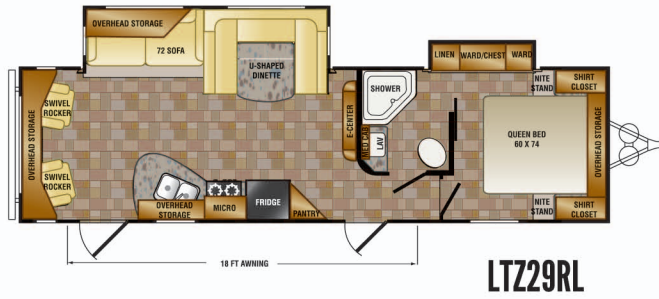
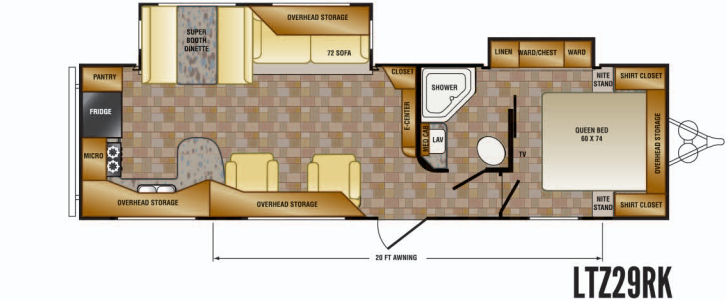
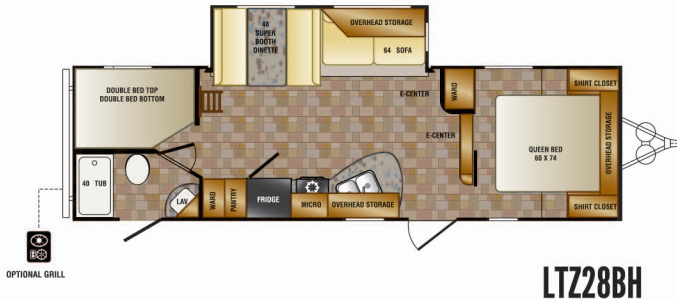
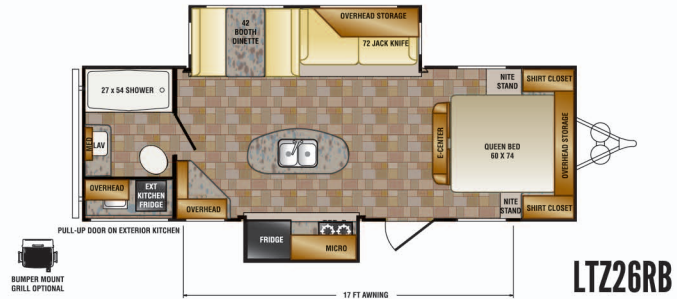
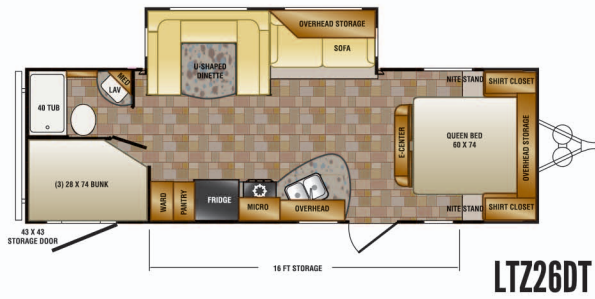
LHT39TS

LHT31SB	LHT32RE	LHT32QB	LHT33BH	LHT39DB	LHT39BH	LHT39TS
7875	7586	5796	8455	8547	8641	9312
9671	9370	9591	11162	11353	11469	11642
1796	1784	2795	2707	2806	2828	2330
1071	770	991	1002	1193	1309	1482
6804	6815	5805	7453	7354	7332	7830
35' 6"	34' 5"	33' 10"	36' 6"	41' 0"	41' 0"	41' 6"
11' 7"	11' 7"	11' 5"	11' 9"	11' 7"	11' 7"	11' 7"
54	54	54	54	54	54	54
40	40	40	40	40	40	40
40	40	40	80	80	80	80
225/75R15D	225/75R15D	225/75R15D	225/75R15D	225/75R15D	225/75R15D	225/75R15D



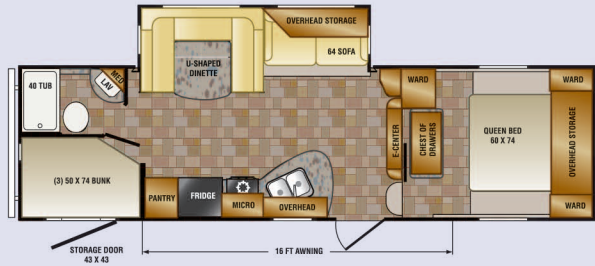
LONGHORN REZERVE

TRAVEL TRAILERS

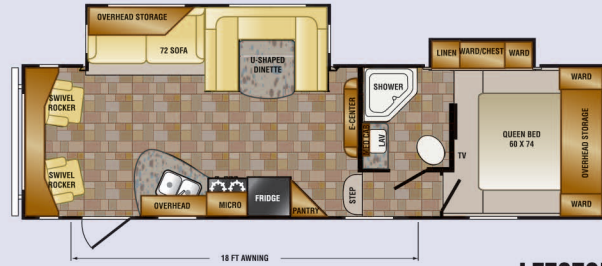


REZERVE	LTZ26DT	LTZ26RB	LTZ28BH	LTZ29RK	LTZ29RL	LTZ31RE	LTZ31SB	LTZ33BH
GVWR	7812	TBD	6254	TBD	TBD	7869	7875	8455
UNLOADED WIGHT	6082	TBD	7850	TBD	TBD	11372	9671	11162
CARRYING CAP	1730	TBD	1596	TBD	TBD	3503	1796	2707
HITCH WEIGHT	812	TBD	850	TBD	TBD	972	1071	1002
AXLE WEIGHT	5270	TBD	5404	TBD	TBD	6897	6804	7453
EXTERIOR LENGTH	29'11"	TBD	31'10"	TBD	TBD	35' 11"	35'6"	36'6"
EXT HEIGHT W/AC	11'5"	TBD	11'5"	TBD	TBD	11' 7"	11'7"	11'9"
FRESH WATER	54	54	54	54	54	54	54	54
BLACK WATER	40	40	40	40	40	40	40	40
GRAY TANK	40	40	40	40	40	80	40	40
TIRE SIZE	205/75R15 C	TBD	205/75R15 C	TBD	TBD	225/75R15 D	225/75R15 D	225/75R15 D

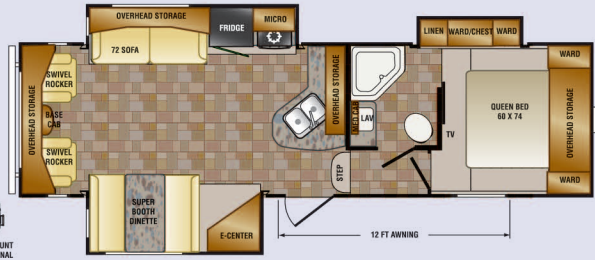
FIFTH WHEELS



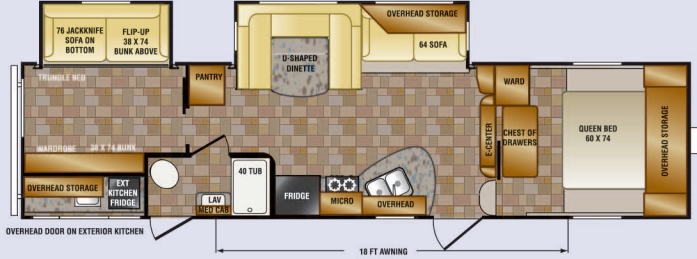
LFZ27BH



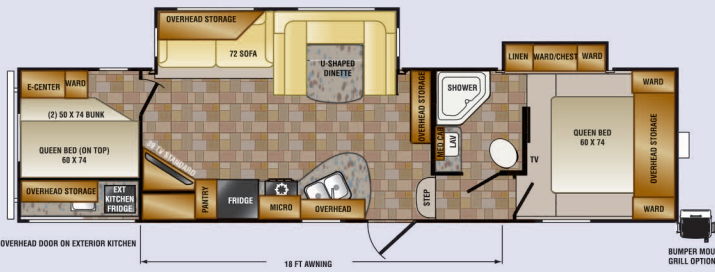
LFZ27CK



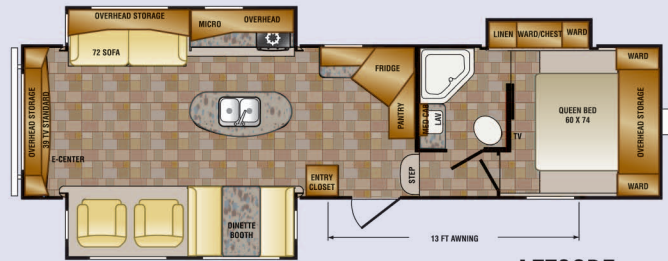
LFZ28RL



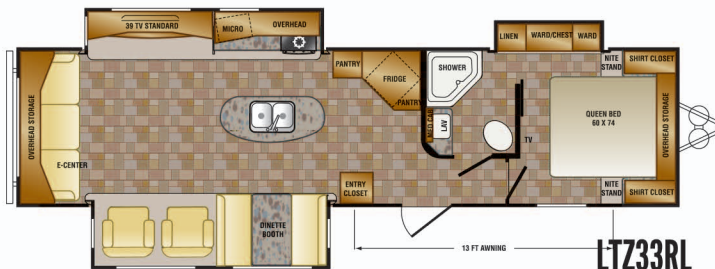
LFZ31BH



LFZ32BH



LFZ32RE



LTZ33RL

LTZ33RL	LFZ27BH	LFZ27CK	LFZ28RL	LFZ31BH	LFZ32BH	LFZ32RE
TBD	TBD	TBD	11772	8366	TBD	TBD
TBD	TBD	TBD	7676	11696	TBD	TBD
TBD	TBD	TBD	4096	3340	TBD	TBD
TBD	TBD	TBD	1612	1536	TBD	TBD
TBD	TBD	TBD	6064	6820	TBD	TBD
TBD	TBD	TBD	30'6"	34'11"	TBD	TBD
TBD	TBD	TBD	12'1"	12'3"	TBD	TBD
54	54	54	54	54	54	54
40	40	40	40	40	40	40
40	40	40	40	40	40	40
TBD	TBD	TBD	225/75R15 D	225/75R15 D	TBD	TBD

LIVING ROOM

- Premium residential furniture
- Decorative glass in sofa slide-out cabinet doors
- Designer valances with hard lambrequin legs
- 7' Interior ceiling height
- 6' Ceilings in slide-out
- Decorative lights (varies by floor plan)
- Wood slide-out fascia
- Sleeper sofa
- AM/FM/CD/DVD stereo system
- Flush floor slide-out with large dinette window
- Generous storage
- Texas star sofa pillows

KITCHEN

- Super booth dinette (varies by floorplan)
- Range hood with light and exhaust fan
- High rise faucet
- Wall mounted systems monitor panel
- Ball bearings and drawer guides in drawers (rated for 70#'s)
- Glazed cocoa cherry cabinet doors
- Cocoa cherry cabinet drawers
- 6 cu. ft. Double door refrigerator
- Wallpaper backsplash

BEDROOM

- 60" x 74" mattress
- TV hook-up
- Coordinated window treatments
- Quilted reversible bed spread
- Texas star body pillow

BATHROOM

- Large parchment color lavatory bowl
- Spacious shower/tub & one-piece surround
- Foot flush white toilet
- Linen storage (varies by floor plan)
- Mirrored medicine cabinet
- Glass shower door & neo angle shower (varies by floor plan)
- Shower curtain with curved shower track (varies by floor plan)

EXTERIOR

- Infused champagne front & rear walls
- New rounded, aerodynamic front end
- 54 gal. fresh water tank
- Tinted safety glass windows
- Radial tires
- Easy open entry step
- Bumper with drain hose storage
- (2) Marine grade exterior speakers
- Molded rain gutters with 3" drip spouts
- 30" Radius entry door with screen door (main only)
- Insulated enclosed underbelly
- Outside shower
- Skylight over tub

CONSTRUCTION

- One-piece rubber roof with 3" rolled roof wrap & 12 year manufacturer's warranty
- 3/8" walkable roof decking
- 16" OC truss rafters with 4 1/2" crown
- R-7 Rated fiberglass roof insulation
- Rain gutters along entire roof line
- 25,000 BTU floor ducted furnace (30,000 in 30KB, 30RK, 32QB, 31SB, 39BH, 39DB & 39TS travel trailers)
- 16" OC stud placement in sidewalls, endwalls and slide rooms
- 5/8" tongue & groove plywood floor decking
- R-7 Rated fiberglass sidewall insulation
- 16" OC 2 x 3 floor joists
- Steel I-beam frame
- R-7 Rated fiberglass floor insulation
- Maximum amount of linoleum throughout
- Nitro filled radial tires with white spoked rims
- Moisture barrier wrapped floor
- 30" Radius entry door with screen
- Secure Stance axles (varies by model)

CONVENIENCE PACKAGE

- 3-Burner range with oven
- TV antenna
- Tub surround

- Smoke detector
- LP detector
- Diamond-plate stone guard
- 13,500 BTU A/C
- Awning
- Microwave
- Drawers under booth dinette
- Power vent in bath
- Swing-out assist rail
- 6 gallon gas/electric DSI water heater
- Night shades
- Stabilizer jacks (4 on TT's)
- Sink covers

OPTIONS

- LED TV
- Chrome center caps
- 8 cu. ft. Refrigerator
- Bi-fold range cover
- 15,000 BTU A/C
- Electric Awning
- Fiberglass front cap
- Rear ladder
- Carpet in bedroom
- Upgraded insulation
- Aluminum rims
- Solid surface kitchen counter top
- Bumper Mount Grill
- Spare Tire and Carrier
- Skylight in Kitchen/Living Room
- Free standing dinette with 4/chairs
- Denver Supreme Upgrade Mattress
- (2) swivel recliners IPO sofa (32RE only)
- Tri-fold Hide-A-Bed (IPO sleeper sofa)

LIVING ROOM

- Premium residential furniture
- Decorative glass in sofa slide-out cabinet doors
- Designer valances with hard lambrequin legs
- Chair rail in slide-outs
- 7' Interior ceiling height
- 6' Ceilings in slide-out
- Decorative lights (varies by floor plan)
- Wood slide-out fascia
- Sleeper sofa
- AM/FM/CD/DVD stereo system
- Flush floor slide-out with large dinette window
- Generous storage
- Texas star pillow

KITCHEN

- Super booth dinette (varies by floorplan)
- Range hood with light and exhaust fan
- High rise faucet
- Wall mounted systems monitor panel
- Ball bearings and drawer guides in drawers (rated for 70#'s)
- Glazed cocoa cherry cabinet doors
- Cocoa cherry cabinet drawers
- Microwave oven
- Range with oven
- 6 cu. ft. Double door refrigerator
- Wall paper backsplash

BEDROOM

- 60" x 74" mattress
- TV hook-up
- Coordinated window treatments
- Quilted reversible bedspread
- Texas star body pillow

BATHROOM

- Large parchment color lavatory bowl
- Spacious shower/tub & one-piece surround
- Foot flush white toilet

- Linen storage (varies by floor plan)
- Mirrored medicine cabinet
- Glass shower door & neo angle shower (varies by floor plan)
- Shower curtain with curved shower track (varies by floor plan)

EXTERIOR

- Laminated aluminum framed two-toned fiberglass sidewalls
- Infused champagne fiberglass front & rear walls
- Rounded, aerodynamic front end
- 54 gal. fresh water tank
- Tinted safety glass windows
- Radial tires - nitro filled
- Easy open entry step
- Bumper with drain hose storage
- (2) Marine grade exterior speakers
- Molded rain gutters with 3" drip spouts
- 30" Radius entry door with screen door (main only)
- Totally enclosed underbelly
- Outside shower
- Skylight over tub

CONSTRUCTION

- One-piece rubber roof with 3" rolled roof wrap
- 3/8" walkable roof decking
- 16" OC truss rafters with 4 1/2" crown
- R-7 Rated fiberglass roof insulation
- Rain gutters along entire roof line
- 13,500 Ducted A/C
- 5/8" tongue & groove plywood floor decking
- R-7 Rated fiberglass sidewall insulation
- 16" OC 2 x 3 floor joists
- Steel I-beam frame
- R-7 Rated fiberglass floor insulation
- Maximum amount of linoleum throughout
- Moisture barrier wrapped floor
- 30" Radius entry door with screen
- Secure Stance axles

CONVENIENCE PACKAGE

- 3-Burner range with oven
- TV antenna
- Tub surround
- Smoke detector
- LP detector
- Diamond-plate stone guard
- 13,500 BTU A/C
- Awning
- Microwave
- Drawers under booth dinette
- Power vent in bath
- Swing-out assist rail
- 6 gallon gas/electric DSI water heater
- Night shades
- Stabilizer jacks (4 on TT's, 2 on FW's)
- Sink covers

OPTIONS

- LED TV
- Chrome center caps
- 8 cu. ft. Refrigerator
- Bi-fold range cover
- 15,000 BTU A/C
- Electric Awning
- Fiberglass front cap
- 50 amp service with 2nd A/C prep
- Rear ladder
- Carpet in bedroom (TT only)
- Upgraded insulation
- Aluminum rims
- Solid surface kitchen counter top
- Tri-fold Hide-A-Bed sofa (IPO sleeper sofa)
- Bumper Mount Grill
- Spare Tire and Carrier
- Skylight in Kitchen/Living Room
- Free standing dinette with 4/chairs
- Denver Supreme Upgrade Mattress

LONGHORN

Texas Edition

