

LIGHTWEIGHT VEHICLES • CROSSOVER VEHICLES • 1/2 TON TRUCKS

# **BULLET**

**ULTRA LITE**  
by Keystone



**DSI**

Annual RVDA DEALER  
SATISFACTION INDEX  
AWARD WINNER  
4 YEARS IN A ROW



**Keystone RV  
Company**

**A NEW ERA IN ULTRA LITES**

[www.keystonerv.com/Bullet](http://www.keystonerv.com/Bullet)

# **BULLET**

**ULTRA LITE**  
by Keystone



**EXTERIOR KITCHEN**  
(287QBS & 308BHS)



*The industry's first Luxury Ultra Lite now has deeper slides and more features!*



**← 3 FEET WIDE! →**

**36" DEEP SLIDES**



**CONVENIENCE,  
COMFORT & STYLE**







272BHS | SHOWN IN DUNE DECOR



272BHS KITCHEN | SHOWN IN DUNE DECOR



272BHS BUNKS | SHOWN IN DUNE DECOR



272BHS BATHROOM | SHOWN IN SADDLE DECOR



[www.keystonerv.com/bullet](http://www.keystonerv.com/bullet)

# **BULLET**

ULTRA LITE  
by Keystone



**CONVENIENCE, COMFORT & STYLE**

You will truly feel at home. Bullet's careful attention to detail and thoughtful use of space result in the most livable ultra lite on the market today.





310BHS | SHOWN IN SADDLE DECOR



310BHS BUNK ROOM | SHOWN IN SADDLE DECOR



310BHS BEDROOM | SHOWN IN SADDLE DECOR



207RBS | SHOWN IN SADDLE DECOR



# **BULLET'S TOP FEATURES**

Includes more standard features that matter in light weights.



**LARGEST PASS-THRU  
STORAGE IN CLASS  
(40.3 CU. FT.)**



**LAUNDRY CHUTE IN  
MASTER BEDROOM**



**JALOUSIE  
WINDOWS**



**BLACKOUT SHADES  
IN BUNK ROOMS**



**7 CU. FT.  
REFRIGERATOR**



**SYSTEMS MONITOR  
PANEL**



**9" DEEP SINGLE BASIN  
KITCHEN SINK  
(N/A 310BHS)**



**STORAGE UNDERNEATH THE  
BED IN MASTER BEDROOM**



**GAS STRUTS ON  
ENTRY DOORS**



**CD/DVD/AM/FM  
STEREO/MP3**



**ELECTRIC ADJUSTABLE  
AWNING**



**EXTERIOR  
SHOWER**

# BULLET

ULTRA LITE  
by Keystone



Bullet is the only ultra lite travel trailer to offer the following climate control features in all floorplans:

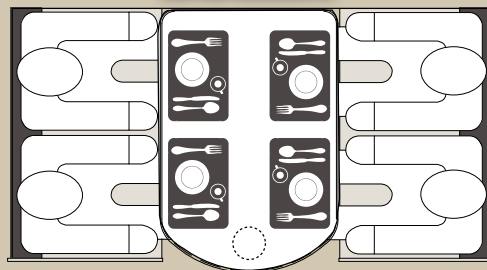
BULLET	COMPETITION
Enclosed underbelly	Exposed Tanks
2" pipe off of furnace with forced air into underbelly	Radiant Heat Only
30,000 BTU Furnace	20,000 - 25,000 BTU Furnace
Ducted Heat and A/C	Non Ducted Heat and A/C

## COMPARE BULLET'S DINETTE TO THE COMPETITION



**LARGE RADIUS  
DINETTE**

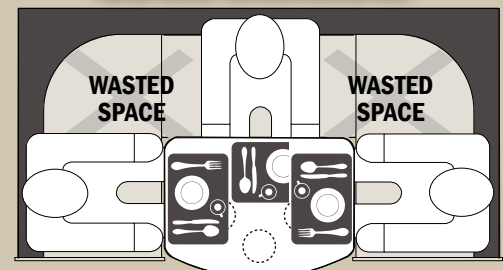
### BULLET



### COMFORTABLY SEATS 4 ADULTS

- PLENTY OF ROOM FOR 4 PLACEMATS
- ONLY NEEDS ONE TABLE SUPPORT
- CONVERTS TO 80" BED

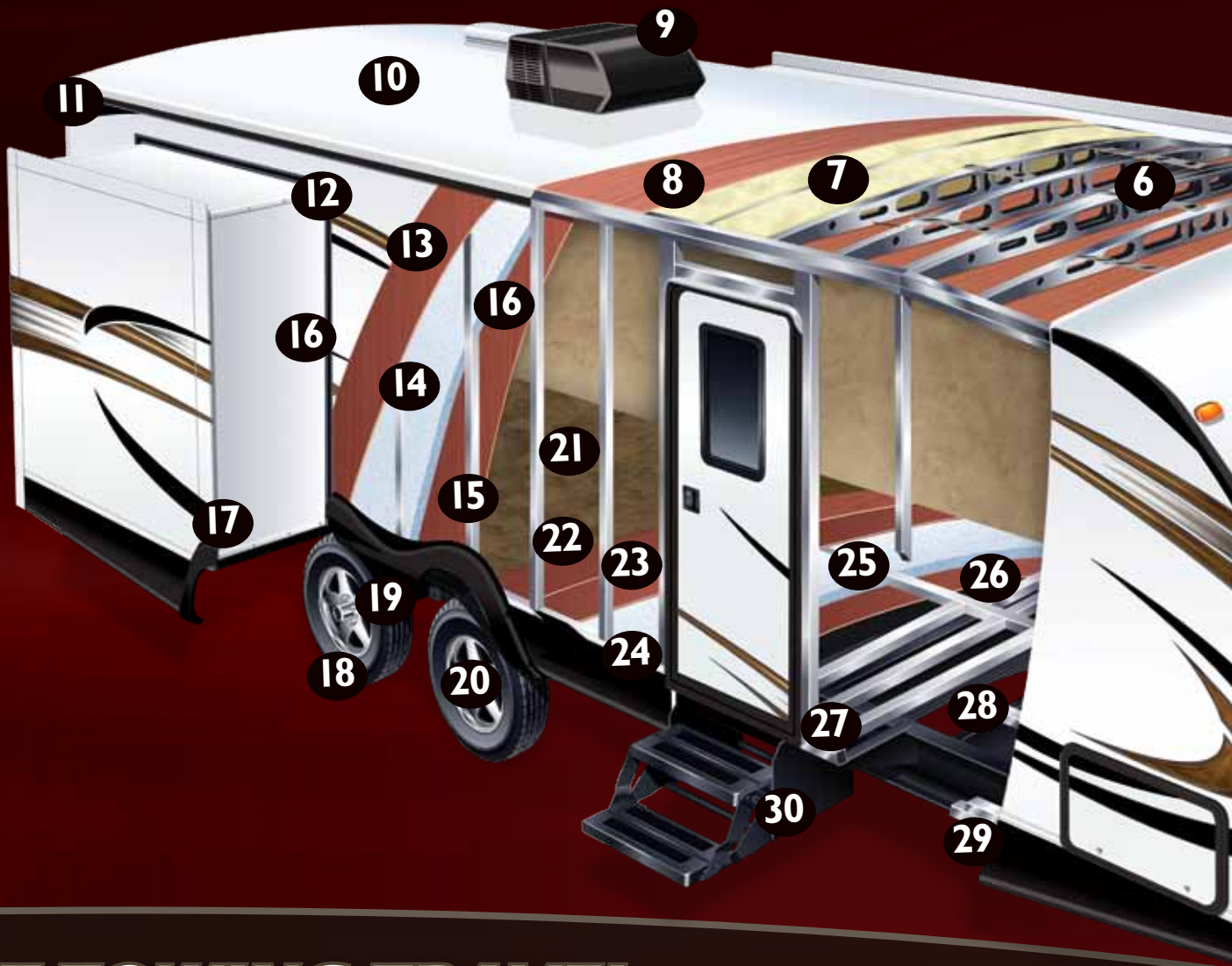
### COMPETITION



### DON'T BE FOOLED! ONLY SEATS 3 ADULTS

- ONLY ENOUGH ROOM FOR 2.5 PLACEMATS
- 3 PEDESTAL SUPPORTS REDUCE LEG ROOM
- ALSO CONVERTS TO 80" BED





## ***BEST TOWING TRAVEL TRAILER IN THE INDUSTRY***

Increased MPG and Easier to tow



Increases efficiency of windflow underneath and behind the trailer



Eliminates turbulence caused by exposed frame members, holding tanks, plumbing etc.



Wider base greatly reduces sway and bouncing



# BULLET

ULTRA LITE  
by Keystone

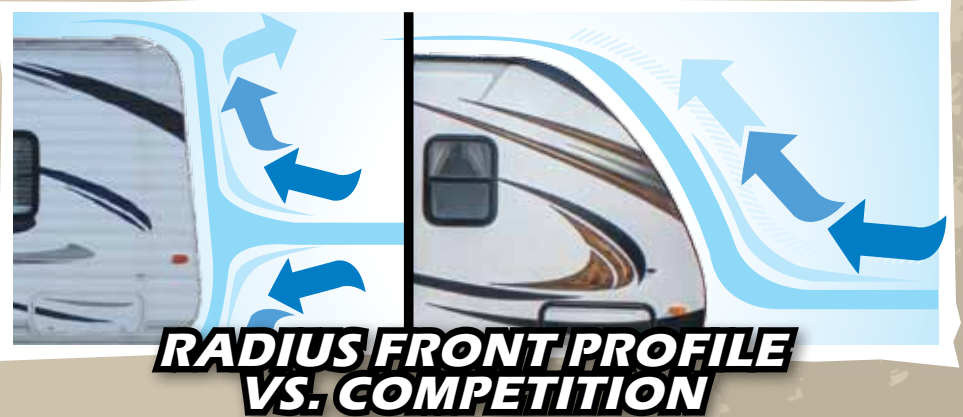


## LIGHTWEIGHT SOLID CONSTRUCTION

- |  |  |
|--|--|
| 1. Quick Access LP Cover                           | 16. Decorative Interior Wall Board             |
| 2. Integrated Dual Battery Tray                    | 17. Bullet's Multi Seal and Track Slide System |
| 3. Diamond Plate Stone Guard                       | 18. Radial Tires with Electric Breaks (4)      |
| 4. Aerodynamic Front Profile                       | 19. Wide Stance Axle System                    |
| 5. Hurricane Straps                                | 20. Easy Lube Axles                            |
| 6. 5" Radius Galvanized Stamped Steel Roof Trusses | 21. Residential Stain Resistant Linoleum       |
| 7. Fully Insulated Roof                            | 22. 1st Layer Floor Decking                    |
| 8. Durable Roof Decking                            | 23. 2nd Layer Floor Decking                    |
| 9. 13.5 Quick Cool Air Conditioning                | 24. Hi-Density In Floor Block Foam Insulation  |
| 10. One Piece TPO Roof                             | 25. Welded Aluminum Floor Joists               |
| 11. Full Length Rain Gutter and 4" Drip Spouts     | 26. 3rd Layer Floor Decking                    |
| 12. Smooth Fiberglass Exterior                     | 27. 6.5" – 8" Steel I-Beam Frame               |
| 13. 1/8" Luan Wall Backing                         | 28. Darco Moisture Barrier Wrap                |
| 14. Hi-Density Block Foam Insulation               | 29. Enclosed Underbelly                        |
| 15. 1 1/2" Box Welded Aluminum Frame Structure     | 30. Radius Entry Steps                         |



Our lightweight floorplans are 1000-1500 lb. lighter than comparable competitors trailers

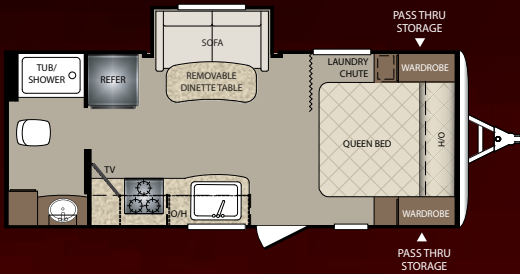


The radius front profile of the Bullet travel trailer gives the optimal contour to reduce wind resistance when traveling down the road.



# TRAVEL TRAILER FLOOR PLANS

You'll find a Bullet floorplan to fit your lifestyle perfectly.



**207RBS**



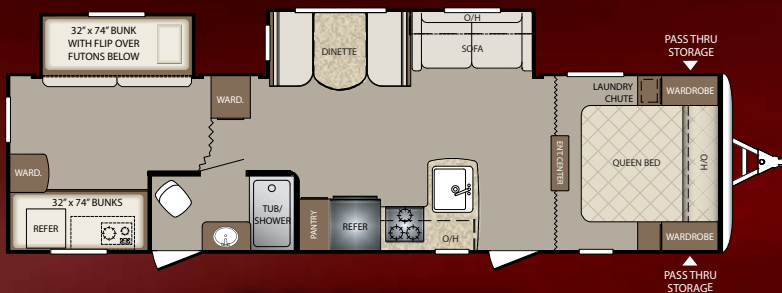
**230BHS**



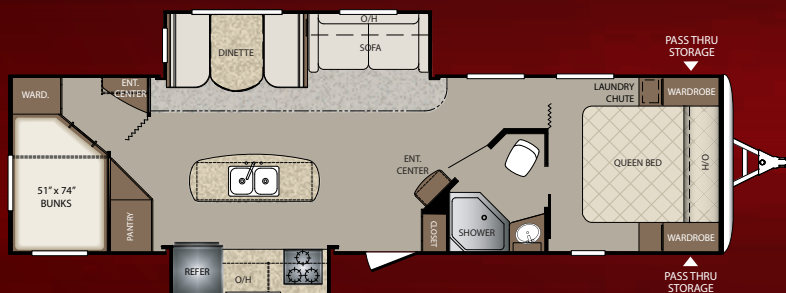
**252BHS**



**272BHS**



**308BHS**



**310BHS**

Product information is as accurate as possible at the date of publication of this brochure. Features, floor plans, and specifications are subject to change without notice. Please also consult Keystone's web site at [keystonerv.com](http://keystonerv.com) for more current product information and specifications. Tow Vehicle Disclaimer. CAUTION: Owners of Keystone recreational vehicles are solely responsible for the selection and proper use of tow vehicles. All customers should consult with a motor vehicle manufacturer or their dealer concerning the purchase and use of suitable tow vehicles for Keystone products. Keystone disclaims any liability or damages suffered as a result of the selection, operation, use or misuse of a tow vehicle. KEYSTONE'S LIMITED WARRANTY DOES NOT COVER DAMAGE TO THE RECREATIONAL VEHICLE OR THE TOW VEHICLE AS A RESULT OF THE SELECTION, OPERATION, USE OR MISUSE OF THE TOW VEHICLE.

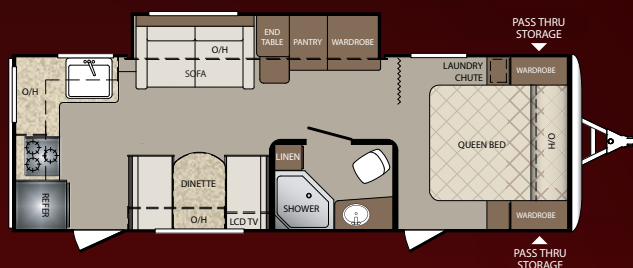


# BULLET

ULTRA LITE  
by Keystone



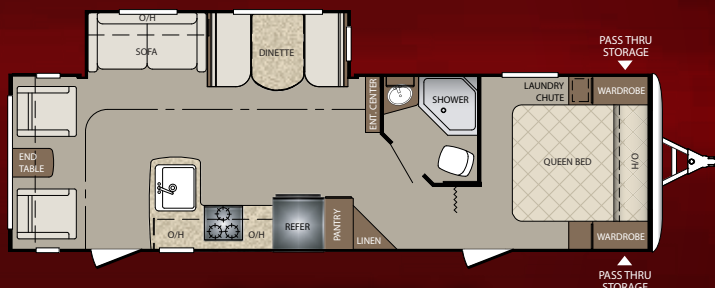
**204RBS**



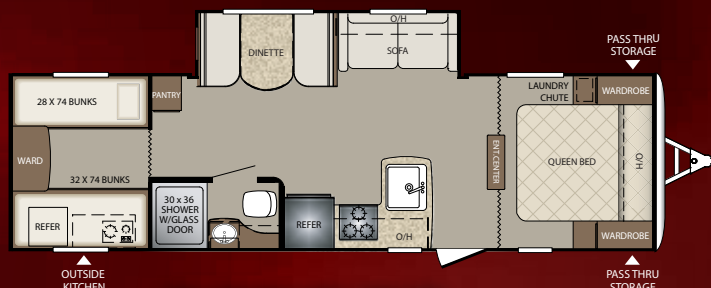
**248RKS**



**251RBS**



**285RLS**



**287QBS**

## WEIGHTS & MEASUREMENTS

TRAVEL TRAILERS	204RBS	207RBS	230BHS	248RKS	251RBS	252BHS	272BHS	285RLS	287QBS	308BHS	310BHS
SHIPPING WEIGHT	3853	4030	4371	4863	4905	4845	5030	5465	5380	5945	5965
CARRYING CAPACITY	2147	2170	2104	1637	2095	2155	2510	2120	2220	1655	1635
HITCH WEIGHT	405	405	475	545	510	515	540	585	685	685	685
EXTERIOR LENGTH	23' 11"	24' 2"	27' 0"	28' 10"	29' 1"	29' 2"	30' 9"	32' 7"	32' 10"	35' 6"	35' 6"
EXTERIOR WIDTH	8'	8'	8'	8'	8'	8'	8'	8'	8'	8'	8'
EXT. HEIGHT - A/C TOP	10' 7"	10' 7"	10' 7"	10' 7"	10' 7"	10' 7"	10' 7"	10' 7"	10' 7"	10' 8"	10' 8"
FRESH WATER (GAL.)	43	43	43	43	43	43	43	43	43	43	43
WASTE WATER (GAL.)	30	30	30	30	30	30	30	30	30	30	30
GRAY WATER (GAL.)	30	30	30	60	60	30	30	30	30	30	60
LP CAPACITY (LBS.)	40	40	40	40	40	40	40	40	40	40	40



# STANDARDS & OPTIONS

## CONSTRUCTION STANDARDS

- Aggressive Front Profile for Increased Towability
- Aluminum Framed Front, End and Side Walls
- Laminated Fiberglass Exterior Side Walls
- 2" Thick Laminated Aluminum Floor
- In-Frame Fresh, Grey, and Black Water Tanks
- 6.5" -8" Steel I-Beam Frame with Welded Outriggers
- 1/4" ABS Enclosed Underbelly
- Darco Moisture Barrier
- One Piece TPO Roof
- E-Z Lube Axles
- Electric Brake System (4 wheels)
- R-11 Insulation in Floor
- R-7 Insulation in Sidewalls
- R-11 Insulation in Roof

## EXTERIOR CAMPING PACKAGE

- Wide Stance E-Z Lube Axles
- 6 Gallon Gas/Electric DSI Water Heater
- Radius Entry Door with Gas Strut
- Outside Speakers
- Outside Shower (Hot & Cold Water)
- Tinted Safety Glass Windows
- 4 Stabilizer Jacks
- TV Antenna & Cable Hook-Up
- Electric Awning with Adjustable Arms Radial Tires

## EXTERIOR FEATURES

- Dual Propane Tanks with Cover
- Front Diamond Plate
- In Frame Dual Battery Rack
- Oversized Exterior Pass Thru Storage with Lighting
- Contoured Fender Skirts for Increased Air-Flow
- LP Quick Connect
- Amber Patio Light
- Spare Tire
- Extended 4" Down Spouts
- Triple Entry Steps
- Oversized Grab Handle (main door)

## INTERIOR CAMPING PACKAGE

- 13.5 BTU Ducted A/C
- Night Shades
- CD/DVD/AM/FM Stereo with Aux & I-Pod Hookup
- 24" LCD TV
- Microwave
- 7 cu./ft. Double Door Refrigerator
- 3 Burner High Output Range
- 9" Deep Oversized Single Basin Sink with High Rise Faucet (N/A 310)
- Glazed Hardwood Cabinet Doors
- Foot Flush Toilet
- Tub Surround with Shelves
- Full Extension Drawer Glides

## INTERIOR FEATURES

- 78" Interior Height
- Fiberglass Reinforced Flooring
- Swivel Rockers (Per Floor Plan)
- Residential Style Furniture
- Water Heater-By-Pass for Winterization
- Night Shades in Living Area
- 17" Oven
- Decorative Wall Border
- Radius Dinette

## BATHROOM

- Towel Hooks
- Deluxe Curved Shower Curtain
- Power Vent Fan
- Solid Wood Medicine Cabinet
- Linen Storage

## MASTER BEDROOM

- Upgraded Memory Foam Mattress
- Dual 110V Outlets
- Mirrored Wardrobes
- Laundry Chute
- Under Bed Storage
- Full Blackout Window Treatments
- Individual Reading Lights

## BUNK ROOMS

- Cable & TV Hookups (Per Floorplan)
- Full Blackout Window Treatments
- Oversized Wardrobe with Rod (Some Floor Plans)

## THERMAL PACKAGE

- Heated & Enclosed Underbelly
- 2" Pipe off of Furnace to Underbelly
- 30K BTU Furnace & Residential Heat Ducts



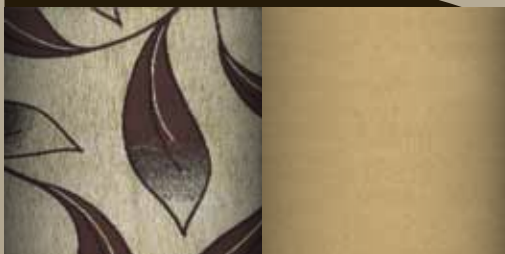
## SAFETY EQUIPMENT

- Carbon Monoxide Detector
- Smoke Alarm
- Fire Extinguisher
- Electric Brakes
- Safety Chains
- Tinted Safety Glass Windows
- Egress Windows (Fire Escape)
- GFI Electrical Outlets

## OPTIONS

- Bumper Mounted Aussie Grill (N/A 286QBS & 308BHS)
- Champagne Fiberglass Exterior
- 15K A/C
- Aluminum Wheels
- Upgraded Tri-Fold Sleeper Sofa in Place of Sleeper Sofa (N/A 207RBS & 248RKS)

DUNE



SADDLE



CHARCOAL



YOUR LOCAL DEALER:



[www.keystonerv.com/bullet](http://www.keystonerv.com/bullet)  
**BULLET**  
ULTRA LITE  
by Keystone

 **Keystone RV Company**  
[www.keystonerv.com](http://www.keystonerv.com)

2642 Hackberry Drive | PO Box 2000  
Goshen, IN 46527-2000  
(574) 535-2100

November 2013