

**Pursuit**  
BY COACHMEN

# **Pursuit**

BY COACHMEN



**Coachmen**<sup>®</sup>  
A division of Forest River, Inc.



The very spacious Pursuit features abundant countertop and strategically located storage areas that allow you to bring along all the comforts of home.

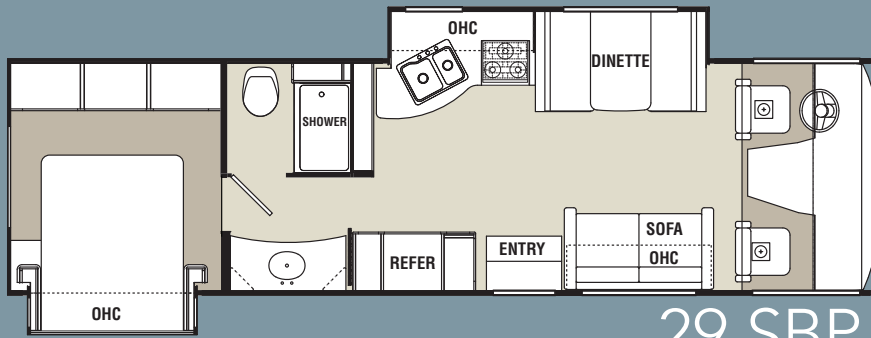


- A. Each Pursuit comes standard with an electric drop-down bunk for additional sleeping capacity.
- B. The Horseshoe booth dinette (31BDP) converts easily for comfort sleeping.
- C. The hidden pull out pantry provides extra counter space in all models.
- D. Each Pursuit comes equipped with a broom and coat closet.
- E. Don't track in dirt! Store shoes in the lighted Mud Room located conveniently just inside the step well.
- F. More storage hidden behind the Swing-out TV (31BDP) adds to the already spacious kitchen storage.
- G. Take advantage of the over-sized exterior compartments of the Pursuit.



Each Pursuit is **Pet-Friendly**. A feeding station and a floor-line window will give your pet their own unobstructed view of the great outdoors.

MODEL NO	29 SBP	31 BDP	33 BHP
GVWR	18,000lb	18,000lb	18,000lb
GCWR	23000 Lbs	23000 Lbs	23000 Lbs
Wheel base	208"	208"	208"
Unit Length	32' 6"	32' 6"	33'
Exterior Height	11' 11"	11' 11"	11' 11"
Exterior Width	102"	102"	102"
Interior Height	84"	84"	84"
Awning Size	18'	18'	12'
Fuel Tank (Gal)	80	80	80
L.P. GAL	20.3	20.3	20.3
Fresh / Waste / Grey Water (Gal)	50 / 45 / 45	50 / 45 / 45	50 / 45 / 45
Water Heater (Gal)	6	6	6
Sleeping positions	6	6	6



29 SBP

**GVWR (Gross Vehicle Weight Rating):**  
The maximum permissible weight of the unit, including the unloaded vehicle weight (UUV) plus all fluids, cargo, optional equipment and accessories. For safety and product performance, do not exceed the GVWR.

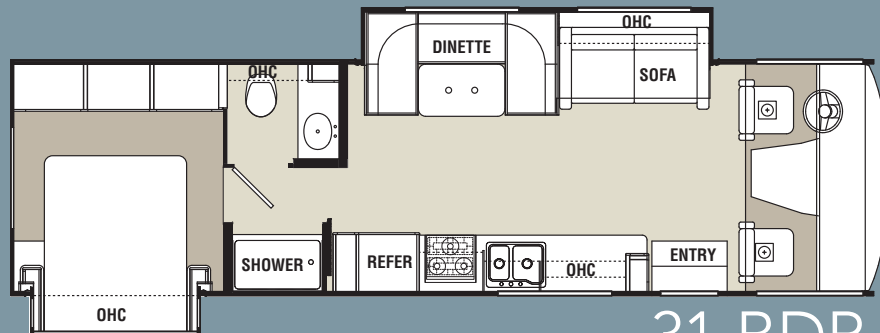
**GCWR (Gross Combined Weight Rating):**  
The maximum total weight of the loaded unit, plus a tow vehicle. This includes the weight of both the unit and tow vehicle, fuel for each, all other fluids, cargo, occupants, optional equipment and accessories.

**Important Note:** All capacities are approximate, and all dimensions are nominal. Coachmen motorhomes are designed to allow for a wide variety of uses, extended trips with two people or short trips with multiple people. Accordingly, each unit allows ample room for sleeping, seating, fluids and cargo. While the customer is the beneficiary of this design, the customer also bears the responsibility to select the proper

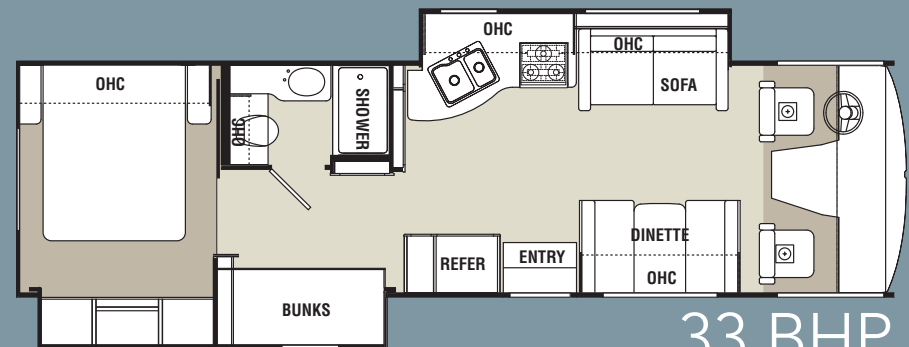
combination of passengers, cargo, load, and tow vehicle without exceeding the chassis weight capabilities. Consumer may need additional braking capacity to tow loads greater than 1,000 pounds.

Seat belts should always be worn for passenger safety. Seat belts are provided at most locations to allow convenience in selecting which seat to occupy. However, it is not intended that all seating positions equipped with a seat belt may be occupied while the vehicle is in motion, without regard to other weight factors.

All Coachmen motorhomes are designed to ensure that the number of passengers allowed while the vehicle is in motion will always at least equal the stated sleeping capacity. Though extra seat belts may be provided, for your safety and the proper operation of your vehicle, limit your passengers to the number allowed by the Net Carrying Capacity of your vehicle.



31 BDP



33 BHP

# Standard Features

## INTERIOR APPOINTMENTS

Power Bunk System  
Cognac Maple Cabinetry  
Laminate countertops throughout  
Congoleum Linoleum Throughout  
Antique Nickel Hardware  
Hardwood Cab Doors/flat panel  
Reclining / Swivel Pilot Seats  
Soft Touch Jackknife Sofa  
Mini-Blinds in Living Room/ Kitchen  
Residential Curtains in Bedroom  
Standard Booth Dinette (29SBP)  
Horseshoe Booth (31BDP only)

## INTERIOR EQUIPMENT

Radio AM/FM/CD  
LP Leak Alarm and Smoke Detector  
Carbon Monoxide Detector  
Fire Extinguisher  
32" LCD TV coach  
Message Center (white board and cork)  
Broom Closet  
Mud Room at Stepwell  
Pet Feeding Center

Pantry  
Pull out Pantry with counter top

## GALLEY

Range Hood w/Light  
Flush Mount, Double Door Ref  
Single Lever High Kitchen Faucet w/ Sprayer  
Double Bowl Kitchen Sink  
3-Burner Range  
Microwave Oven

## BATH AND WATER

Porcelain Toilet w/Foot Flush  
One Piece ABS shower Surround  
Upgrade Shower curtain  
Power Bath Vent  
6-Gallon (gas) D.S.I Water Heater

## SLEEPING

Queen Bed 60W X 74L  
Pre-wired for power vent

## ELECTRICAL//HEATING/AC

30'-30amp Power Cord  
55 amp Converter w/ Distribution Panel  
GFI Circuit  
Outside recept

Emergency Start Switch  
Patio Light  
30,000 BTU E.I. Furnace  
15,000 BTU Roof Air Conditioner-Ducted  
Single Coach Battery  
4.0 Generator ONAN  
Coach Command Center  
Heated Holding Tank Compartment  
Exterior Cable TV Jack

## AUTOMOTIVE/EXTERIOR

18,000# Ford Chassis  
Passenger Side Safety Window  
Mega Rear Storage (N/A 33BHP)  
Dash Air Conditioning  
Cab Privacy Shades  
Back Up Monitor  
Rear Mud Flaps Only  
Power Entrance Step-Single Crowned, Laminated TPO Roof  
Radius Trunk Doors  
Fiberglass Front Cap  
Dead Bolt Lock-Entrance Door  
Radius Entry Door  
Power Patio Awning  
5,000 Towing Hitch w/7 Way Plug  
Rear Mounted Roof Ladder

Exterior Mirrors  
Rear Bumper  
Stainless Steel Wheel Liners  
Slide-out room awning(s)  
20 Gallon LP Tank

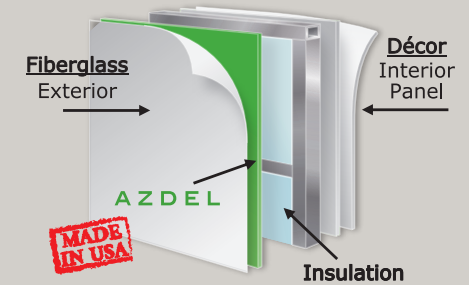
## OPTIONS

Tan Colored Glass  
FULL PAINT  
Burgandy Blaze  
Sapphire Blue  
Nevada Sand  
Ivory Coast  
Bedroom TV  
Fantastic Vent in Bedroom  
Side Cameras  
Power Heated Mirrors  
Automatic Leveling Jacks  
(<sup>1</sup>)DIAMONDSHIELD (req. w/ full paint)  
(<sup>1</sup>)CSA Upfit  
CD-MVSA (Canadian Motor Vehicle Safety Act)  
RVID (Mandatory TX, CA and FL)  
Travel Easy Roadside Assistance (Coach-Net)

Notes: (<sup>1</sup>) Mandatory For All Canadian Provinces

## RV SIDEWALL CUT-AWAY Lighten Your Adventure:

Featuring  
**AZDEL**  
ONBOARD™  
COMPOSITE SIDEWALLS



Coachmen RV uses Azdel Composite Panels to replace wood in RV Sidewalls. Azdel Panels are impervious to water: **No Rot, Mold or Water Damage**. Azdel Panels are constructed using a blend of polypropylene and fiberglass, creating an extremely strong, lightweight and water resistant sidewall.



Forest River, Inc. encourages our customers to purchase their Forest River products from a local dealership whenever possible for the following reasons:

- 1) Forest River, Inc. dealers are independently owned and operated businesses so priority service and scheduling is at their discretion and is often provided to customers that purchased their unit at that dealership.
- 2) Purchasing locally allows customers to establish meaningful relationships with a dealer, enhancing the RV experience through assistance with product questions, user tips or RV regulations for your state or country, and much more!
- 3) Canadian customers must meet requirements to bring an RV purchased out of the country to their home. These requirements may involve additional inspections and certifications, taxes and fees. Your local Canadian Dealer is a professional at meeting these requirements.
- 4) Scheduling timely warranty repairs and adjustments through a local dealership provides far greater flexibility and convenience to you, the customer!

It is the goal of Forest River, Inc. that all of our RV owners fully enjoy the RV experience and that customer satisfaction meets or exceeds their expectations!

## FREE One Year Membership – Coachmen Owners Association!



Coachmen is proud to sponsor the largest manufacturer sponsored camping club in North America ... Coachmen Owners' Association (COA). COA provides you a world of ways to enjoy your RV. This is FUN ON OVERDRIVE and provides: Free Trip Routing, Exciting Tours & Rallies, Free Campground Directory, Local/State Club Activities, Easy RVing Magazine Free, Theme Park Discounts, Fuel Discounts, and Much More! Every new Coachmen RV buyer is eligible for a 1 Year FREE membership in the Coachmen Owners' Association. It all adds up to an easy ownership experience!



Coachmen RV, a Division of Forest River Inc.,  
A Berkshire Hathaway Company  
423 N. Main St., P.O. Box 30, Middlebury, IN 46540

www.coachmenrv.com

All information contained in this brochure is believed to be accurate at the time of publication. However, during the model year, it may be necessary to make revisions and Coachmen reserves the right to make all such changes without notice, including prices, colors, materials, equipment and specifications as well as the addition of new models and the discontinuance of models shown in this brochure. Therefore, please consult with your Coachmen dealer and confirm the existence of any materials, design or specifications that are material to your purchase decision.



Learn More  
Scan this barcode using a QR Reader on your smart phone to learn more about Forest River.



A Berkshire Hathaway company.

## Travel Easy™ Roadside Assistance



RVing is easier with Coachmen's Travel Easy™ Roadside Assistance provided FREE the first year of ownership to those who purchase a New Coachmen RV. Administered by Coach-Net, this service provides you with 24/7 operational, technical and emergency road service coverage. Also included is towing, fuel delivery, jump starts, lockout service, tire changes, mobile mechanic and unlimited technical assistance. Anywhere. Anytime. Travel Easy™ is the security of knowing that help is an easy phone call away.