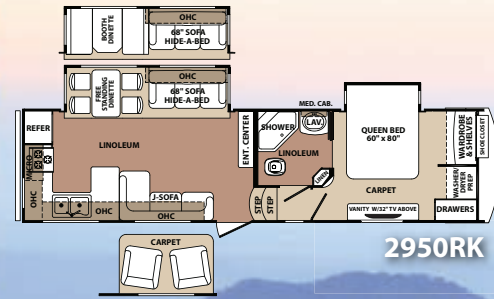
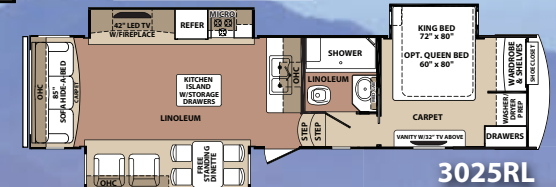


# Blue Ridge

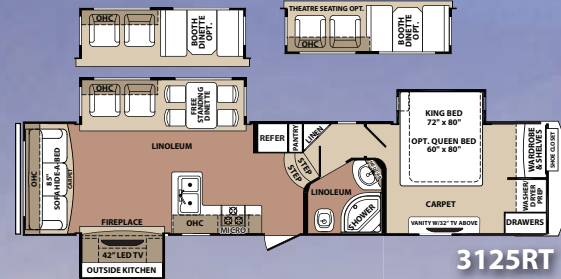
FIFTH WHEELS



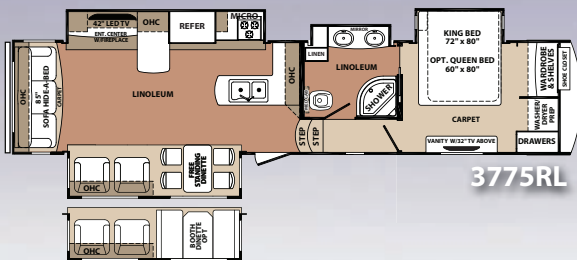
2950RK



3025RL



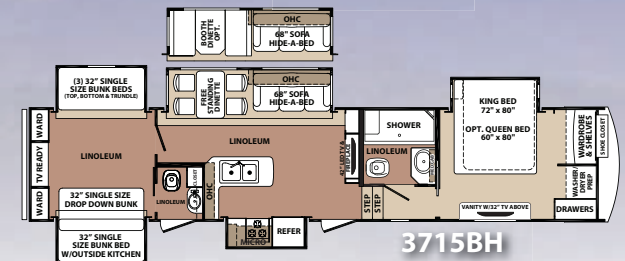
3125RT



3775RL



3600RS



3715BH

## SPECIFICATIONS

MODEL	2950RK	3025RL	3125RT	3775RL	3600RS	3715BH
Overall Length	32' 4"	35' 6"	36' 3"	39' 1"	39' 10"	40' 7"
UVW	10104	11109	11279	13199	12759	13109
Hitch Weight	2210	2090	1860	2497	2210	1930
GAWR	12000	12000	12000	13680	13680	13680
GVWR	14210	14090	13860	16177	15890	15610
Cargo Carrying Capacity	4106	2981	2581	2978	3131	2501
Exterior Height	13' 0"	13' 0"	13' 0"	13' 0"	13' 0"	13' 0"
Exterior Width	98"	98"	98"	98"	98"	98"
Interior Height (bedroom)	81"	81"	81"	81"	81"	81"

A Berkshire Hathaway company.



MODEL	2950RK	3025RL	3125RT	3775RL	3600RS	3715BH
Interior Height (living area)	106 1/2"	106 1/2"	106 1/2"	106 1/2"	106 1/2"	106 1/2"
Tire Size	235/80R16E	235/80R16E	235/80R16E	235/80R16E	235/80R16E	235/80R16E
Brake Size	12"	12"	12"	12"	12"	12"
Fresh Water	73 gal.	73 gal.	73 gal.	73 gal.	73 gal.	73 gal.
Waste Water	120 gal.	120 gal.	120 gal.	120 gal.	120 gal.	160 gal.
Water Heater	10 gal.	10 gal.	10 gal.	10 gal.	10 gal.	10 gal.
Furnace	42000 BTU	42000 BTU	42000 BTU	42000 BTU	42000 BTU	42000 BTU
Patio Awning	17'	17'	19'	18'	19'	19'
Exterior Storage (cu. ft.)	102	102	102	102	102	102

## STANDARD FEATURES

### INTERIOR

- Solid hardwood raised panel glazed cabinet doors & drawers
- Lumbercore vinyl wrapped cabinet frames (Stiles)
- Crown molding
- Solid wood (Baltic birch) drawer boxes
- Ball bearing, full extension drawer glides
- Congoleum™ "Designer Care" flooring (3 Year warranty)
- Tri-color nylon twist residential carpet
- Satin nickel cabinet hardware & accents
- Satin nickel plumbing fixtures
- Decorative slide room fascia frame
- Decorative solid wood frame entry door
- Solid wood exit assist handle
- Fireplace (N/A 2950RK)

### GALLEY

- LG Venus solid surface polished counter tops w/undermount sink
- Spice rack (Most models)
- Wine rack (Most models)
- Double bowl stainless steel kitchen sink
- High rise™ spout kitchen faucet
- Hardwood refrigerator fronts
- Fantastic fan w/rain sensor

### LIGHTING

- LED running & tail lights
- LED lighting throughout
- Semi flush decorative ceiling light above dinette
- Hanging lighting above sink w/decorative mount
- Ceiling fan
- Exterior LED docking lights (2-Mounted into front cap)
- Exterior security lights (2)
- Exterior amber patio light

### FURNITURE & WINDOW COVERINGS

- Swivel/glider recliners (2) (N/A 3715BH; opt 2950RK)
- Free standing dinette table w/dual leafs & 4 chairs w/flip-up storage (2 are folding chairs)
- Three seat rear sofa w/flip-down cup holders in center cushion
- Tri-fold sleeper sofa
- Bonded leather sofa & recliners
- Day/night pleated shades
- Designer fabric window treatments (Where available)

### BATHROOM

- 12 Volt power roof vent
- HPL vanity top w/oversized residential bowl
- Porcelain toilet w/foot flush
- "Mega" 30" x 60" fiberglass molded shower
- Glass shower door
- Shower skylight/dome
- Adjustable shower head
- Medicine cabinet w/mirrored door
- Towel bar
- Dedicated heat & AC duct

### BEDROOM

- Premium, innerspring mattress
- King bed
- Designer headboard, bedspread, pillows & sham
- Full-height hanging wardrobe
- French mirrored closet doors
- Stackable washer/dryer prep
- Shoe caddy
- Cubby storage
- Chest of drawers
- Underbed storage
- (2) Bedside windows in slide-out
- (2) Reading lights w/individual controls
- (2) Bedside power outlets

### APPLIANCES

- 8 cu. ft. double door refrigerator
- 3 Burner, high output range w/22" oven
- Range cover
- 30" Convection/microwave oven
- 42K BTU LP furnace
- Wire & frame for 2nd AC
- 15K Ducted Quiet Cool system
- 10 Gal. gas/electric DSI water heater
- "Shurflo" On-demand high output water pump (3g/min @ 55 PSI)
- Central vacuum system w/powered dust pan
- Dual 30 lb. LP bottles w/auto switchover
- LP leak detector
- Carbon monoxide detector

### ELECTRONICS

- 5 Function remote control w/key fob
- Key fob operates slides, awning, patio light, front jacks & rear jacks
- 42" LG LED w/HD steel swing arm
- Furrion Theater System w/bluetooth, HDMI, DVD, AM/FM, weather band
- Digital TV antenna w/signal booster

- Cable TV hook-ups (Main living & bedroom)
- Cable TV hook-up (Exterior garage bulkhead)
- Satellite prep (Roof mount at road side front mushroom cap)
- Nationally recognized electronic brands (LG, Toshiba & Furrion)
- Exterior flip-down speakers

### EXTERIOR

- High-gloss pigmented gel coat fiberglass exterior on all walls
- Front cap: Molded two color painted high gloss gel coat fiberglass w/LED light accents
- Front cap design: Engineered w/extended turning radius (Chamfered front)
- Laminated front bulkhead w/high gloss gel coat fiberglass
- Slam latch 1.5 in thick baggage doors w/high gloss gel coat fiberglass (All compartments)
- Slide end walls: Laminated w/high gloss gel coat fiberglass
- 30" x 76" Entry & screen door w/high gloss gel coat fiberglass
- 45° Angled skirt
- Automotive frameless windows
- Hydraulic slide room power
- Individual slide room selector switches
- Roof ladder
- Electric awning w/LED light strip
- Entry assist handle (XL-Folding)
- Black exterior trim
- 2.5" Aluminum black belt rail w/caps (No exposed screws)
- Roto-cast spun seamless water/waste tanks
- PEX plumbing system
- Enclosed, heated underbelly (Forced air heat)
- Dual roof vents
- Slide room seal & gasket system
- Aluminum "H" frame slide room perimeter
- Dual neoprene squeegee seals
- Exterior & interior "D" seals
- Exterior "H" seal
- Utility docking compartment
- 12 Volt light
- 110 outlets (2)
- Outside shower (Hot & cold)
- Black tank flush system
- Fresh water & heater bypass valve

- Full coach water filtration system
- Winterizing bypass system
- Protected/insulated pull waste valves
- Waste hose storage tube
- Slam latch 1.5" luggage door

### CHASSIS/FOUNDATION

- I-beam "Z" frame power coated chassis
- Chamfered frame technology
- 10" Beams (12" Beams: 3600RS, 3775RL, 3715BH)
- Dual 6K Axles (7K: 3600RS, 3775RL & 3715BH)
- Easy lube axles
- MOR/ryde suspension
- 8 Lug hubs
- Aluminum rims 16"
- Goodyear tires (E-rated)
- Spare tire (Inside storage mounted)
- Hydraulic front jacks
- Electric rear stabilizing jacks
- Triple steel entry steps (2950RK, 3025RL, 3125RT)
- Four steel entry steps (3600RS, 3715BH, 3775RL)
- Flush floor slide design w/steel ramp & glide bar (Main room slides)
- Hydraulic slide system w/2.5" steel rams
- Hydraulic pump station with manual override
- 18K Extended hitch pin

### CONSTRUCTION

- Sidewalls: Aluminum welded frame 2" walls
- Roof: 5" Tapered aluminum trussed on 16" centers
- Front wall: Laminated aluminum welded frame
- Rear wall: Laminated aluminum welded frame
- Main floor: Wood laminated
- Bath/bed floor/deck: Aluminum welded frame
- Slide end walls: Aluminum welded frame, laminated
- Slide roof: Aluminum welded frame, laminated
- Slide floor: 1" Plywood

### INSULATION

- Sidewalls: Block foam insulation
- Roof: Aluminum radiant foil insulation and fiberglass insulation
- Main floor: Block foam
- Sub floor: 1/4" honey combed plastic w/aluminum radiant foil insulation & direct forced air heat

- Front wall: Batt (Fiberglass insulation & aluminum radiant foil insulation)
- End wall: Block foam insulation

### ELECTRICAL SYSTEMS

- Centralized command center & monitor panel
- 70 Amp converter
- 50 Amp service
- Marine grade detachable 50 Amp power cord
- 12 Volt battery disconnect
- "Easy Diagnose" LED fuse indicator
- Battery prep box

## OPTIONS

### INTERIOR

- 12 Cu. ft. 4 door refrigerator (3600RS, 3775RL)
- Fantastic fan w/rain sensor in bedroom (N/A with 2nd AC)
- 32" LCD HD TV (Bedroom/Bunkhouse 3715BH)
- Day/night roller shades
- Booth dinette
- Theater seats
- (2) Recliners IPO J-Lounge (2950RK only)
- Serta deluxe pillow top mattress (Donald Trump Edition)
- Queen bed w/night stand (IPO king bed)
- Sofa w/Hide-a-bed in bunkroom (IPO lower bunk & trundle bed)
- Booth dinette (IPO free-standing table and chairs)

### EXTERIOR

- "Level Up" one touch automatic 6-point hydraulic leveling system
- Dual pane frameless windows
- Generator prep
- Slide out awning toppers
- Low profile 13.5 ducted A/C in bedroom
- Heat pump for 15,000 BTU A/C
- Fantastic fan w/rain sensor in bedroom (N/A w/low profile 13.5 BTU A/C)
- 5.5KW LP Generator (Includes prep)
- Mor/Ryde pin box
- Outside entertainment center w/32" LED TV, DVD & iPod control
- Tank heating pads (Electric)
- Bike hitch



Learn More  
Scan this barcode using  
a QR Reader on your  
smart phone to learn  
more about Forest River.



A Berkshire Hathaway company.

All illustrations and specifications contained in this literature are based on the latest product information at the time of publication. Forest River, Inc. reserves the right to make changes in prices, colors, materials, equipment and specifications at anytime, without notice, and assumes no responsibility for any error in this literature. All units are shipped F.O.B. point of manufacture. ©9/13 ©Forest River, Inc. 2013 Blue Ridge

# Blue Ridge

FIFTH WHEELS

Blue Ridge Division  
58277 State Road 19 South • Elkhart, IN 46517  
(574) 296-7700  
[www.forestriverinc.com/blueridge](http://www.forestriverinc.com/blueridge)  
[www.forestriveraccessories.com](http://www.forestriveraccessories.com)

