

# ELEVATION

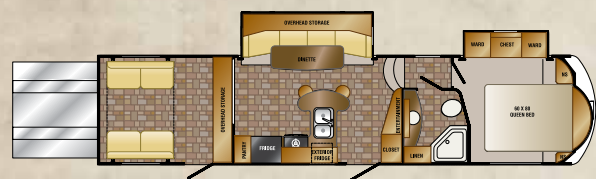


**CROSSROADS®**  
RECREATIONAL VEHICLES



# ELEVATION MODELS

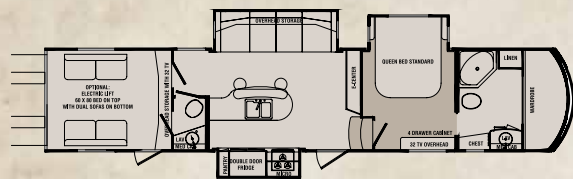
Elevation models weigh up to 20% less than every other Toy-Hauler in their class!



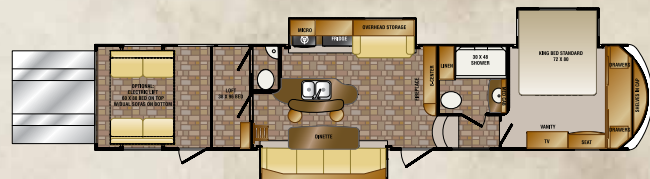
TF3410



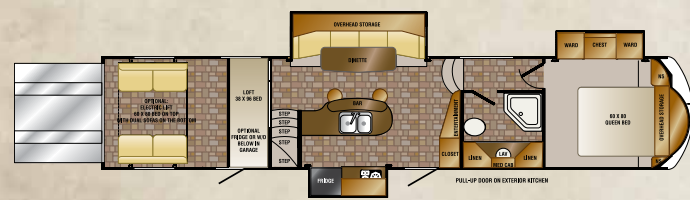
TF3412



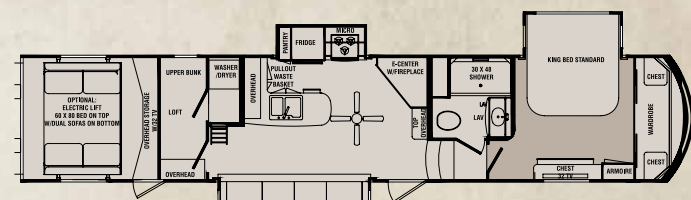
TF3810



TF3812



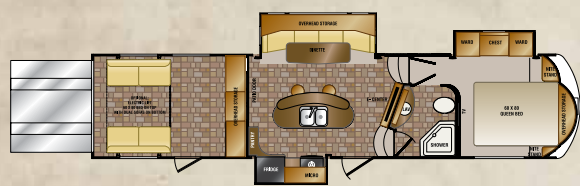
TF4012



TF4212

ELEVATION	TF3410	TF3412	TF3612	TF3616	TF3810
SHIPPING WEIGHT	10681	TBD	10910	11933	14674
GVWR	15500	TBD	15500	18000	18000
CARRYING CAP	4819	TBD	4590	6067	3326
HITCH WEIGHT	2213	TBD	2400	2619	3296
AXLE WEIGHT	8468	TBD	8510	9314	11378
EXT LENGTH	36' 11"	TBD	37' 11"	41' 11"	42' 5"
EXT HEIGHT W/AC	13'2 "	TBD	13'2 "	13'2 "	13'2 "
FRESH WATER	112	TBD	112	112	104
BLACK WATER	40	TBD	40	40	70
GRAY	80	TBD	80	80	70
TIRE SIZE	ST235/80R16E	TBD	ST235/80R16E	ST235/80R16E	ST235/80R16E

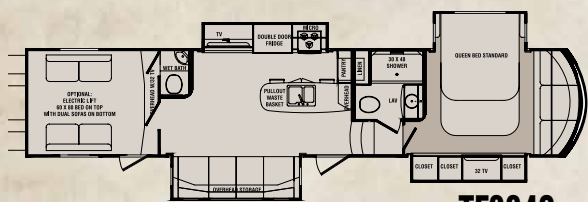
# FLOOR PLANS



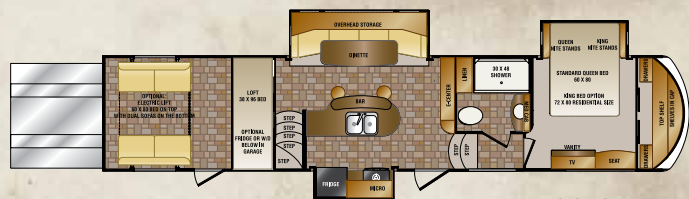
TF3612



TF3616



TF3840



TF3912

TF3812	TF3840	TF3912	TF4012	TF4212
12450	14848	11995	12339	15018
18000	18000	18000	18000	18000
5550	3152	6005	5661	2982
2908	3770	2839	2946	3410
9542	11078	9156	9393	11608
42' 11"	42' 4"	41' 3"	42' 4"	42' 10"
13'2 "	13'2 "	13'2 "	13'2 "	13' 2 "
112	104	112	112	104
40	65	40	40	45
80	65	80	80	90
ST235/80R16E	ST235/80R16E	ST235/80R16E	ST235/80R16E	ST235/80R16E



# STANDARDS & OPTIONS

## STANDARDS

### INTERIOR

- 8' Ceiling in main living area
- Solid surface kitchen countertops
- Max fan w/ rain sensor in main living room
- Luxurious styled residential furniture
- Stainless steel ball bearing drawer guides
- Frameless tinted safety glass windows
- Porcelain foot flush toilet
- Quilted pillowtop bedroom mattress
- LED TV in main living area
- Home theater surround soundbar
- Blu-Ray DVD player w/ internet apps
- Large stainless steel residential kitchen sink
- High rise kitchen faucet w/ pull-down sprayer
- Hidden hinged railed panel cabinet doors
- Roller night shades
- 15,000 BTU ducted A/C
- 40,000 BTU furnace
- Upgraded interior LED lighting
- LP & carbon monoxide detectors, smoke alarms
- Residential microwave
- Crown molding throughout
- USB charging station

### EXTERIOR

- Front hydraulic landing gear
- Rear electric stabilizer jacks
- Power awning w/LED lighting
- Quad-Step entry steps at both doors
- Trail Aire "Rota-Flex" hitch
- 30" entry door w/window
- Convenience docking station
- Roof mounted satellite prep
- LED docking hitch light
- Fold away grab handles at both doors
- (2) 40# LP bottles
- Power exhaust fans in bedroom & bathroom
- Auxiliary 30 gal fuel tank w/ pump
- 16" custom aluminum wheels
- "E" rated radial tires
- Spare tire with carrier
- 50 amp service power cord
- Fold flat roof access ladder
- (2) exterior scare lights
- Exterior TV & satellite hook-ups

### CONSTRUCTION

- 3/8" plywood roof decking
- 5/8" plywood tongue & groove floor decking
- 12 gal gas/electric water heater
- Water heater by-pass valve
- Black tank flush
- Foil insulation in roof, floor, cap & slides

- Heated and enclosed underbelly
- Wired & prepped for 2nd A/C
- 110 gal fresh water tank
- 7000# rated axles
- 90 amp power converter

### PEAK PERFORMANCE STANDARDS

- 5.5 Onan generator w/30 gal fuel tank
- Rear electric queen bed lift w/sofa's
- 2nd Power awning w/LED light strip
- 32" LED TV in bedroom
- Garage pull down screen
- Central vacuum system

## OPTIONS

- "Level UP" 6-point hydraulic leveling system
- Patio deck w/power awning
- 12 cu. ft. 4-door refrigerator
- 12 cu. ft. 4-door refrigerator w/ ice maker
- 2nd 15,000 BTU A/C
- 32" LED TV in garage
- Trail Air "Tri-Glide" hitch

### POLAR PACKAGE

- Dual pane windows
- 12V heat pads
- Heat pump

DISCLAIMER: Product information is as accurate as possible at the date of publication of this brochure. All features, floorplans, and specifications in this brochure are subject to change without notice. Please also consult CrossRoads RV's website at [www.crossroadsrv.com](http://www.crossroadsrv.com) for more current product information and specifications. Tow Vehicle Disclaimer. CAUTION: Owners of CrossRoads recreational vehicles are solely responsible for the selection and proper use of tow vehicles. All customers should consult with a motor vehicle manufacturer or their dealer concerning the purchase and use of suitable tow vehicles for CrossRoads RV products. CrossRoads RV disclaims any liability or damages suffered as a result of the selection, operation, use or misuse of tow vehicle. CROSSROADS RV'S LIMITED WARRANTY DOES NOT COVER DAMAGE TO THE RECREATIONAL VEHICLE OR TOW VEHICLE AS A RESULT OF THE SELECTION, OPERATION, USE OR MISUSE OF THE TOW VEHICLE.



# ELEVATE YOUR GAME!

Aluminum frame construction on the sidewalls, roof and floor is 20% less weight than comparable wood/aluminum hauler. What does that mean for you? Elevation is 3/4 Ton towable even with a loaded garage!



## LIVE A LITTLE!

Elevation Interiors are a showcase for luxury RV Living. They're designed to flow seamlessly, quietly and beautifully together from living room, kitchen and bedroom. It all comes together in a Elevation vehicle.







## MADE IN THE USA

PROUD TO BE MADE IN THE UNITED STATES OF AMERICA! ALL CROSSROADS PRODUCTS, INCLUDING ELEVATION MODELS, ARE HAND-CRAFTED BY A SEASONED MIDWEST WORKFORCE DEDICATED TO QUALITY AND INTEGRITY. THE BEST ONLY GETS BETTER WHEN YOU CONSIDER THE METICULOUS ATTENTION TO DETAIL, QUALITY OF COMPONENTS AND VALUE AN AMERICAN MADE PRODUCT BRINGS. YOU CAN CHECK OUT OUR FULL LINE OF PRODUCTS BY VISITING [CROSSROADSRV.COM](http://CROSSROADSRV.COM) TODAY.

MORE >>> Go see more details on construction, features & benefits at: [crossroadsrv.com](http://crossroadsrv.com)

**CROSSROADS®**  
RECREATIONAL VEHICLES

YOUR LOCAL CROSSROADS DEALER:

1140 W. LAKE STREET 🍷 TOPEKA, IN 46571 🍷 PH 260 593-3850 🍷 FX 260 593-2088