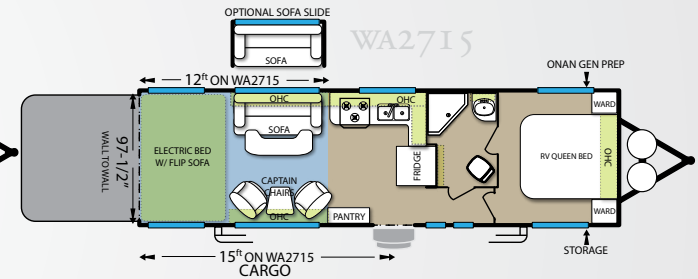
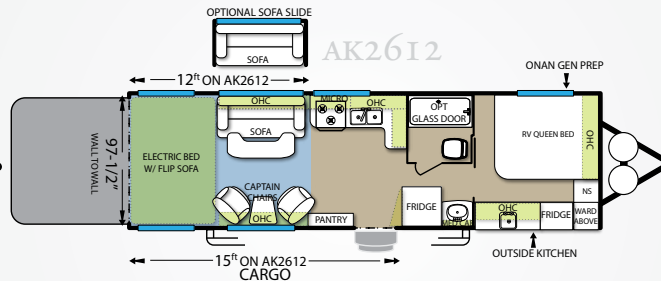
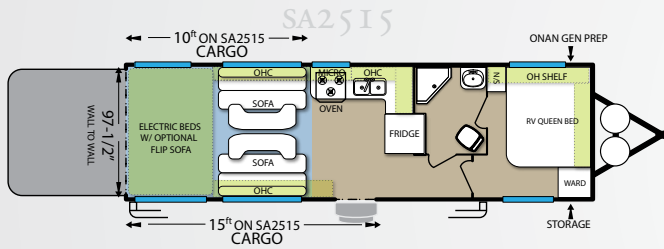
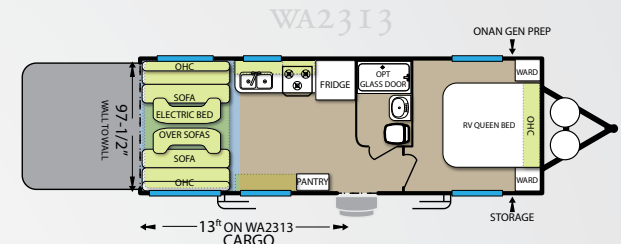
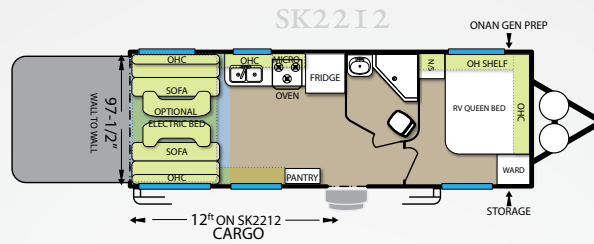
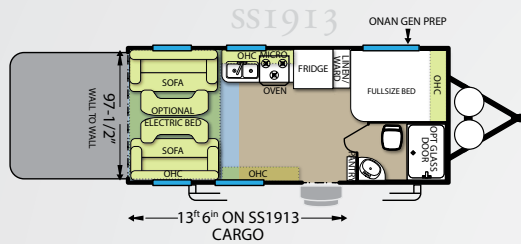




STEALTH

FLOOR PLANS



SPECIFICATIONS

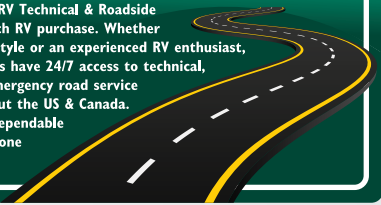
Model	Hitch Weight	Axle Weight	GVWR	CCC	Box Length	Total Height	Fresh Water	Grey/Black
SS1913	740 lbs	4,818 lbs	7,740 lbs	2,182 lbs	20'0"	12' 0"	106 gal	60/40 gal
SK2212	869 lbs	5,512 lbs	9,999 lbs	4,888 lbs	24' 4"	12' 0"	106 gal	60/40 gal
WA2313	1,075 lbs	5,270 lbs	9,999 lbs	5,130 lbs	24' 6"	12' 0"	106 gal	60/40 gal
SA2515	TBA	TBA	9,999 lbs	TBA	26' 10"	TBA	106 gal	60/40 gal
AK2612	1,100 lbs	5,888 lbs	9,999 lbs	4,512 lbs	27' 9"	12' 1"	106 gal	60/40 gal
WA2715	1,005 lbs	5,982 lbs	9,999 lbs	4,418 lbs	28' 7"	12' 0"	106 gal	60/40 gal

*The Cargo Carrying Capacity does not include the weight of water, fluids, all popular options. Weights and capacities are approximate, the addition of optional equipment including fiberglass siding will increase the overall weight. All illustrations and specifications contained in this literature are based on the latest product information at time of publication. Forest River reserves the right to make changes in price, colors, materials, equipment, and specifications at any time without notice and assumes no responsibility for any error in this literature.

24/7 EMERGENCY ROADSIDE ASSISTANCE

For a worry-free ownership experience Forest River includes one year of Coach-Net RV Technical & Roadside Assistance with each RV purchase. Whether new to the RV lifestyle or an experienced RV enthusiast, Forest River owners have 24/7 access to technical, operational and emergency road service coverage throughout the US & Canada. Coach-Net's fast, dependable service is just a phone call away.

Coach-Net®
RV Technical & Roadside Assistance



Forest River, Inc. encourages our customers to purchase their Forest River products from a local dealership whenever possible for the following reasons:

- 1) Forest River, Inc. dealers are independently owned and operated businesses so priority service and scheduling is at their discretion and is often provided to customers that purchased their unit at that dealership.
- 2) Purchasing locally allows customers to establish meaningful relationships with a dealer, enhancing the RV experience through assistance with product questions, user tips or RV regulations for your state or country, and much more!
- 3) Canadian customers must meet requirements to bring an RV purchased out of the country to their home. These requirements may involve additional inspections and certifications, taxes and fees. Your local Canadian Dealer is a professional at meeting these requirements.
- 4) Scheduling timely warranty repairs and adjustments through a local dealership provides far greater flexibility and convenience to you, the customer!

It is the goal of Forest River, Inc. that all of our RV owners fully enjoy the RV experience and that customer satisfaction meets or exceeds their expectations!



A Berkshire Hathaway company.



FEATURES

BY FOREST RIVER

- 102" Wide Body Construction
- 106 gal Fresh Water Capacity
- 15" Chrome Wheels
- Onan Gen Prep
- 2 Din/Bed/Tables (per FP)
- 2" Fully Insulated Floor
- 3 Burner Cook Top w/ Cover & Oven
- 30k BTU Ducted Furnace
- 4 Corner Stabilizer Jacks
- 40 gal Fuel Station, Road Side
- 6 gal DSI Water Heater w/ 10.2 Recovery
- A&E Awning (Electric on 2612, 2715)
- AM/FM/DVD w/ Bluetooth
- Aerodynamic Design
- Automotive Baked Enamel Aluminum Exterior
- Back Up Lights & Hitch Light
- Bathroom Skylight
- Central Command Center
- Designer Headboard
- Designer Hi-Rise Brushed Nickel Faucet
- Dual 5 gal Quick Exchange LP Btls
- Ducted 13.5k BTU A/C
- Extended Rain Gutters
- Exterior Marine Grade Speakers
- EZ Lube Axles w/ Self Adjusting Brakes
- Flat Heavy Gauge Aluminum Front
- Full Extensions Ball Bearing Drawer Guides
- Full HD Graphics
- Full Length Walk on 1 Piece Rubber Roof Decking
- Knife Rack
- LED Marker Lights for Safety
- Larger Grey & Black Tanks
- LP Quick Connect
- Match Spare w/ Carrier
- Metal Entry Door Latch
- Outside Shower
- Pillow Top Mattress
- Powder Coated Chassis & Horseshoe
- Radius Ramp, Baggage & Entry Doors
- Rear Electric Bed(s) (per FP)
- Residential Microwave
- Roto Cast Drive On Wheel Well
- RVIA Safety Certified
- Scare Lights (2)
- Sewer Hose Carrier
- Split Sink Covers
- Vintage Timber Cabinetry
- Water Heater By-Pass
- Wide Track Axles



UPGRADES

- 2 Chairs & Bay Window IPO Sofa
- 4.0 Onan Generator
- 8 cuft Refrigerator (per FP)
- A/C 15k BTU
- Add-A-Wall Rear Screen Drape
- Additional 60 gal Fresh Water (NA 1913)
- Aluminum Wheels w/ Matching Spare
- Aluma Wall Fiberglass Exterior
- Black Tank Flush
- Carpet Kit
- Glass Shower Door w/ Surround
- Kicker Audio Sound System
- LED TV w/ DVD
- Night Shades
- Power Awning w/ Adjustable Legs
- Rear Bed Flip Sofa (2515)
- Retractable Shower Door
- Retractable Ladder
- Single Electric Bed (1913, 2212)
- Sofa Slide Out (per FP)
- Solid Surface Counter Tops (per FP)
- Stainless Steel Appearance Appliances
- Tough Ply Flooring (per FP)
- 155 Watt Solar Power Kit w/ Regulator
- Jack HDTV Digital Antenna
- Power Saver LED Interior Light Package
- 360 Siphon Odor Extractor

G-SERIES PACKAGE

- Aluma Wall Fiberglass Siding
- Aluminum Wheels w/ Matching Spare
- Kicker Audio Sound System
- Night Shades
- Stainless Steel Appearance Appliances
- Power Awning (STD AK2612, WA2715)
- Fender Skirts (AK2612, WA2715)
- Radius Auto Mold (AK2612, WA2715)

ARCTIC PACKAGE

- Insulated & Enclosed Tanks
- 12v Heat Strips
- Double Insulation Roofs & Floors

FORESTRIVERINC.COM/STEALTH

