

COLEMAN EXPEDITION



COLEMAN EXPEDITION

COLEMAN IS CAMPING!



DESIGNED WITH YOUR FAMILY IN MIND.

And what a way to camp! Actually, Coleman is home. Everything about our living spaces is inviting and comfortable. Our kitchens are open, enjoyable places to congregate, and our seating accommodations are a source of serenity and relaxation.



330RL, IN MOCHA



330RL, IN MOCHA



330RL, IN MOCHA

Coleman offers a floorplan to suit every family, large or small. Kitchens include a Norcold 6-cubic foot refrigerator, range with standard oven, microwave, and double bowl sink with high-rise brushed nickel faucet. Most models include a residential-styled convertible jackknife sofa. Bedrooms include a residential upgraded memory foam mattress, laundry chute, two hanging closets, nightstands on both sides, and a deep overhead storage cabinet.



262BH, IN ASHLAND



262BH



262BH



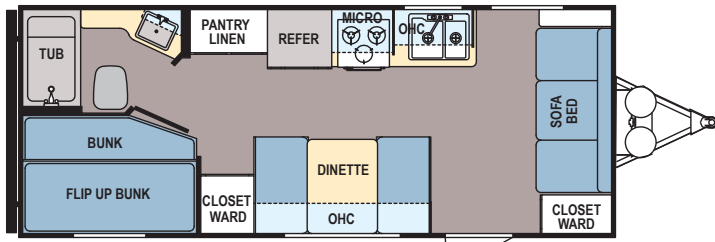
262BH

Coleman kitchens all offer fantastic amounts of storage space. Our design engineers convert every possible nook and cranny into usable, functional storage. Cabinets include hardwood doors and drawer fronts, and drawers include full-extension drawer guides. Lighting is well laid out, and you'll really appreciate the galley skylight. Several floorplans offer a mega-sized U-dinette with drinkholders and easy-adjust high/low dinette table.

THE ORIGINAL SOCIAL MEDIA SITE!

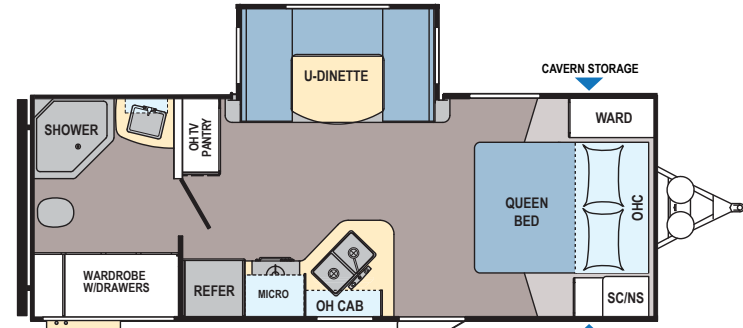
DISTINCTIVE, CREATIVE LAYOUTS.

Optional solid surface kitchen countertops dramatically highlight the attention to detail our interior designers bring to every floorplan. You'll appreciate the residential touches as well, such as window casements, roomy dinettes with under-seat storage that convert to double bed sleeping areas, flexible kitchen designs and a variety of entertainment centers.



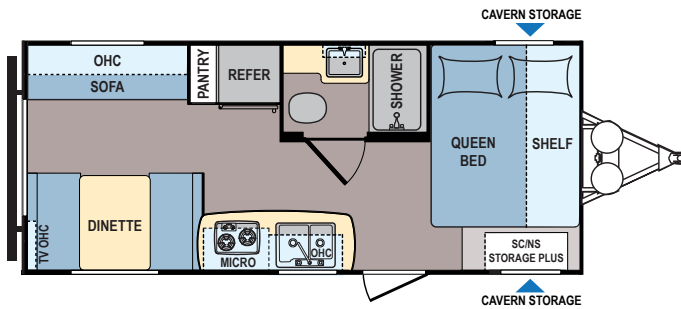
30 x 13 STOR MORE
W/ P'N'P OPTION
30 x 20 VE/PW

CTS184BH

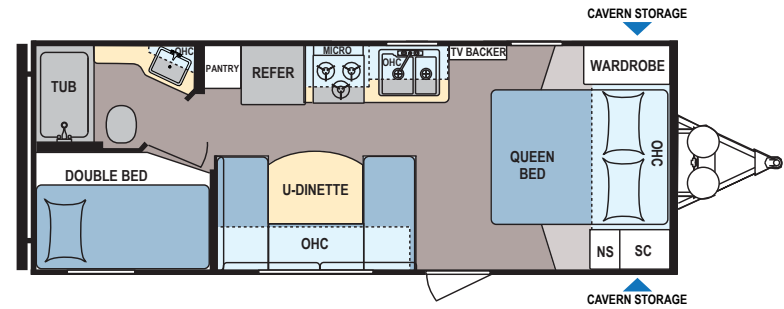


OUTSIDE KITCHEN

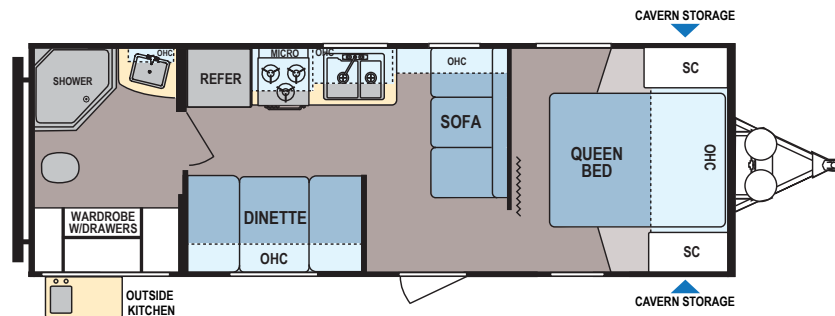
CTS191QB



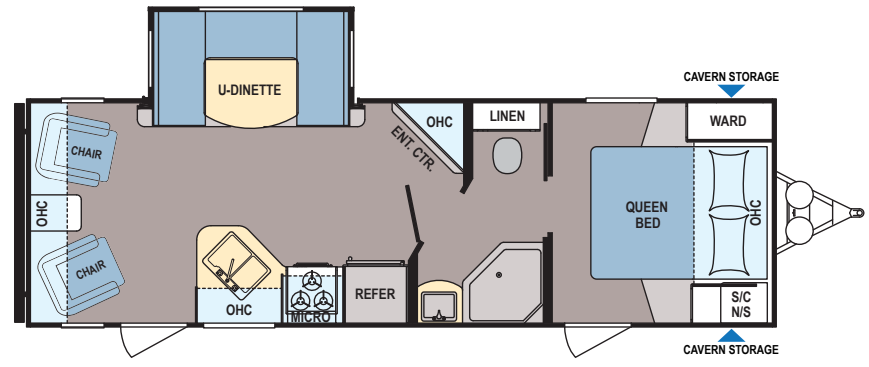
CTS192RD



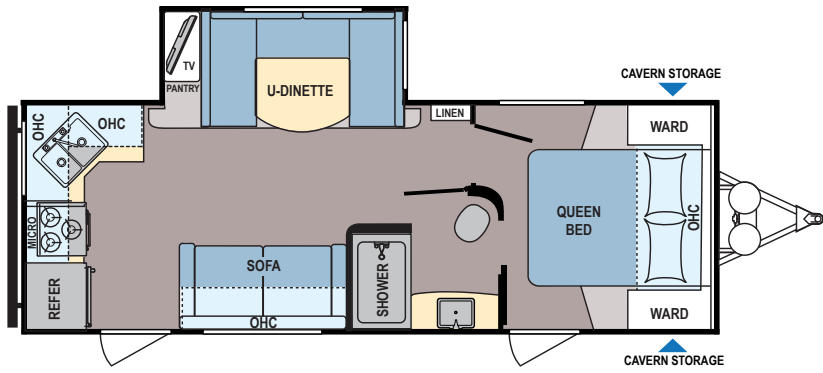
CTS231BH



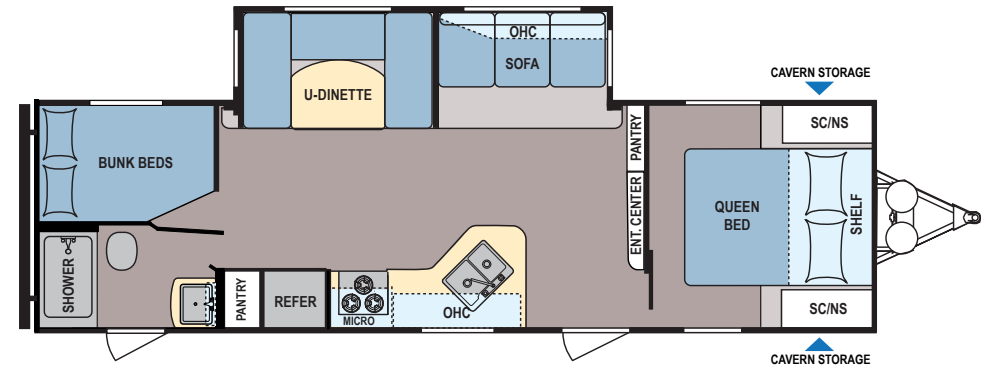
CTS233QB



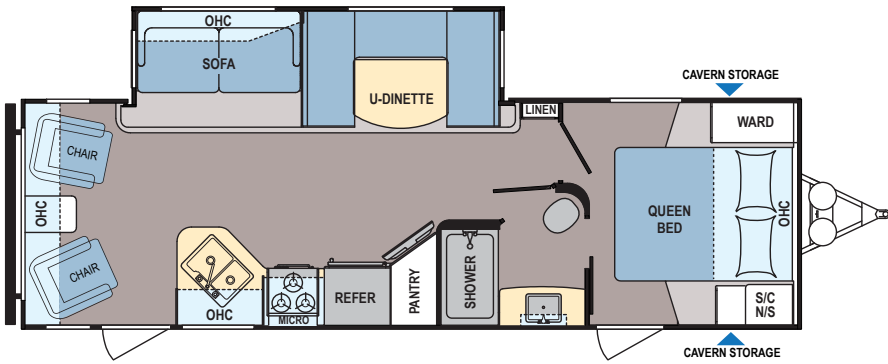
CTS240RL



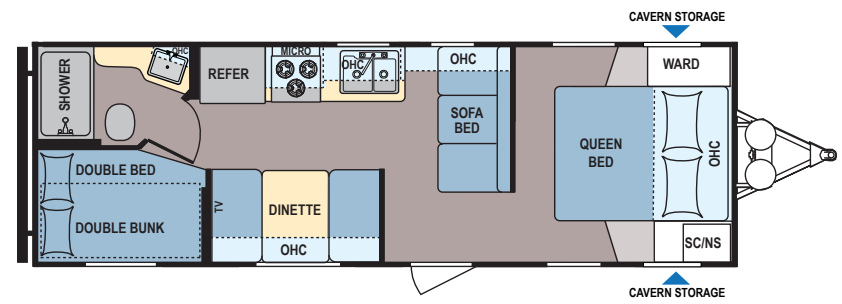
CTS243RK



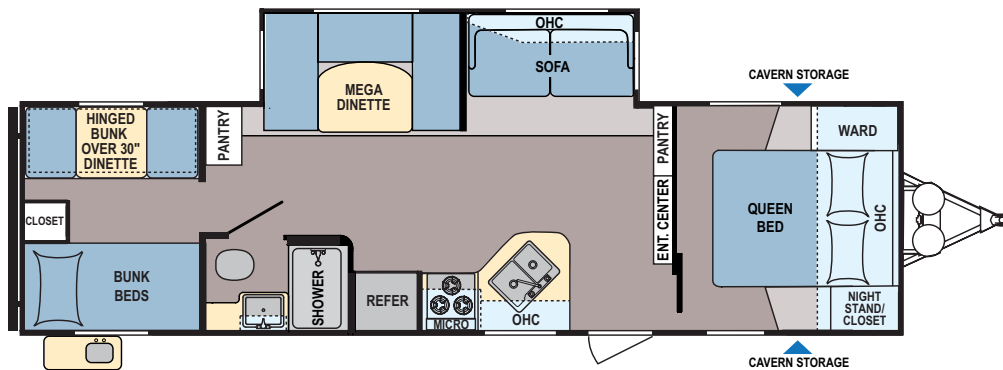
CTS262BH



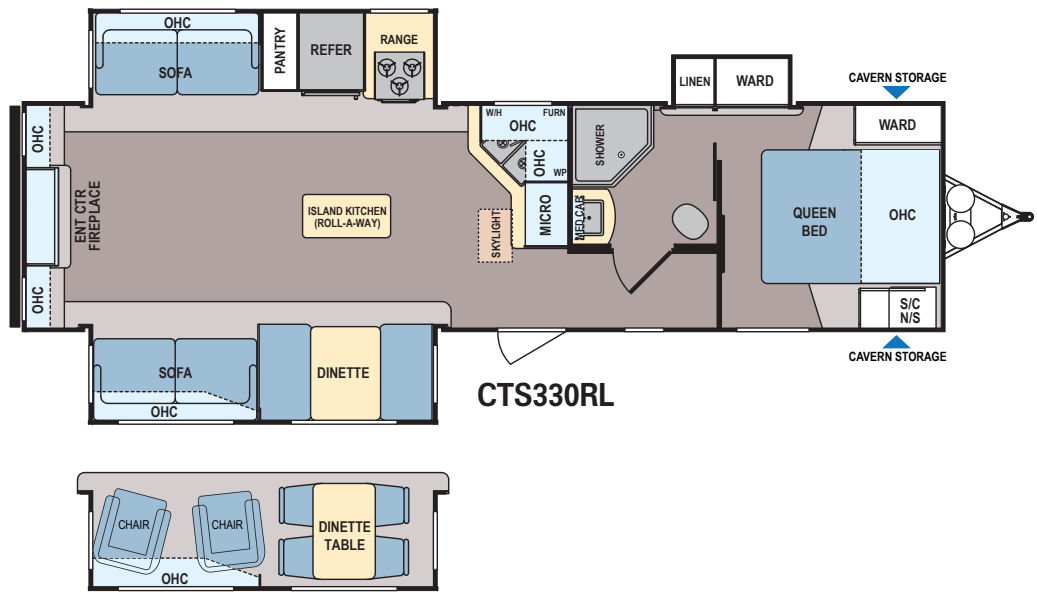
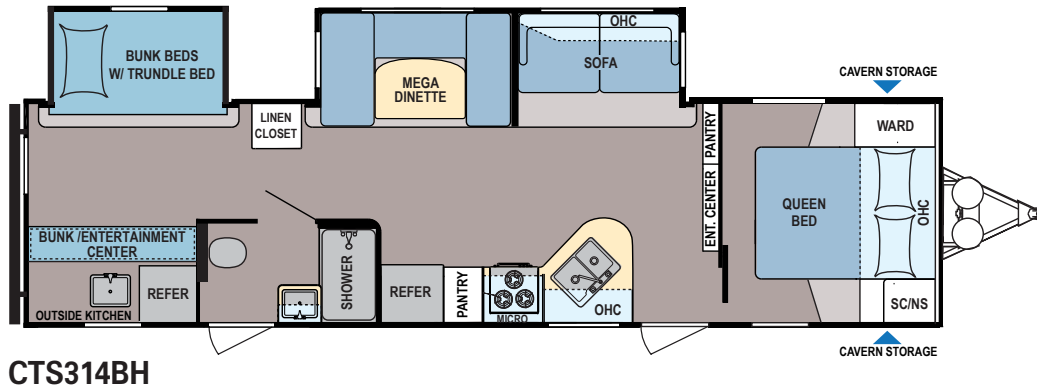
CTS270RL



CTS274BH



CTS310QB



SPECIFICATIONS

	CTS184BH	CTS191QB	CTS192RD	CTS231BH	CTS233QB	CTS240RL	CTS243RK	CTS262BH	CTS270RL	CTS274BH	CTS310QB	CTS314BH	CTS330RL
GVWR	TBD	7600	7600	TBD	7600	TBD	7600	9680	9680	7600	9680	9680	11176
UVW	TBD	5433	3926	TBD	4896	TBD	5966	6858	6728	4646	6897	7914	8500
HITCH WEIGHT	TBD	658	453	TBD	596	TBD	696	900	610	604	936	949	920
OVERALL LENGTH	24' 3"	25' 8"	22' 11"	25' 11"	27' 11"	TBD	27' 3"	31' 9"	30' 7.5"	28' 7"	33'	35' 9"	35' 5"
OVERALL HEIGHT (WITH A/C)	TBD	135"	119"	129"	125 1/2"	TBD	137"	136"	134"	124"	136 1/2"	138 1/2"	138"
FRESH WATER SYSTEM	60	60	52	60	60	60	60	52	60	52	52	60	60
BLACK WATER	42	42	42	42	42	TBD	42	42	42	42	42	42	42
GREY WATER	42	42	42	42	42	TBD	84	42	42	42	42	42	42

COLEMAN OFFERS MANY EXTERIOR FEATURES GUARANTEED TO ENHANCE YOUR CAMPING EXPERIENCES.

You can pack everything you need in our cavern-sized pass-thru storage system, found on most models. Keep out of the sun with a optional Carefree® power awning, and keep summer's heat out with Expedition's large tinted safety glass windows. And, the optional outside hot and cold shower comes in extremely handy when you need to hose off the husband and kids.

Other exterior features include black diamond plate front stone guard, a fully-enclosed forced-heat underbelly, 28-inch entry door, quick LP disconnect, an extra 120V outlet located under the awning, ABS fender skirt, and two outside entertainment speakers.



262BH



EXPEDITION LT

DESIGNED WITH YOUR FAMILY IN MIND.

First of all ... Storage. Everywhere. You can stow everything that makes a vacation complete in Coleman's LT travel trailers. Other features include comfortable seating, roomy interiors, mini-blinds throughout, pleated nightshades, interior speakers, full-extension drawer guides, bath skylight, foot pedal flush toilet, and Congoleum Carefree slate pattern residential flooring. Not to mention a microwave, range hood with 12V light and exhaust fan, sink and matching high-rise faucet.

16BH, IN MOCHA



16BH, IN MOCHA

LT - LITE BY DESIGN!

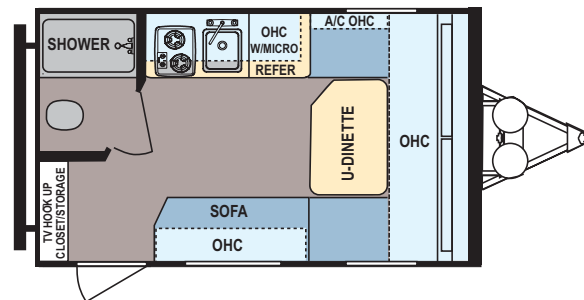


16BH

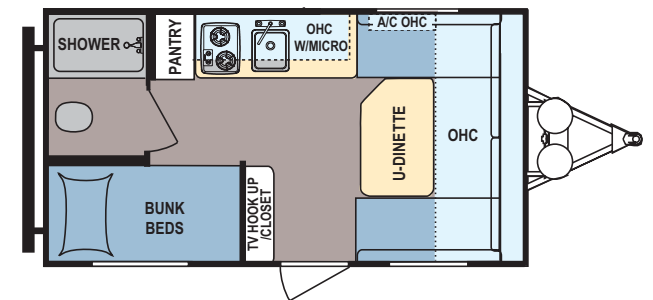
LT SPECIFICATIONS

	CTS14FD	CTS15BH	CTS16BH	CTS16QB
GVWR	3400	3800	3850	3800
UVW	2639	2715	3156	3072
HITCH WEIGHT	291	317	460	352
OVERALL LENGTH	17' 6"	18' 9"	21' 8"	21' 5"
OVERALL HEIGHT (WITH A/C)	120"	118 3/4"	104 1/2"	117"
FRESH WATER SYSTEM*	27	27	27	27
BLACK WATER	28	28	28	28
GREY WATER	28	28	28	28

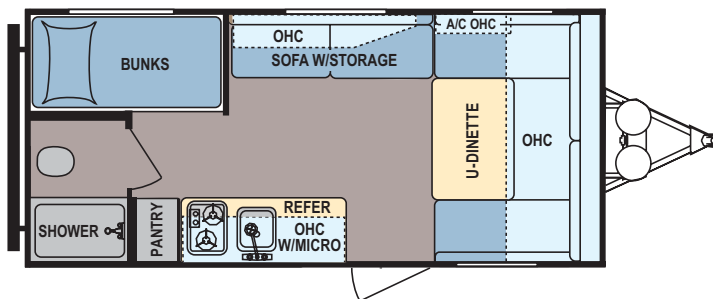
*Water heater included in Explorer



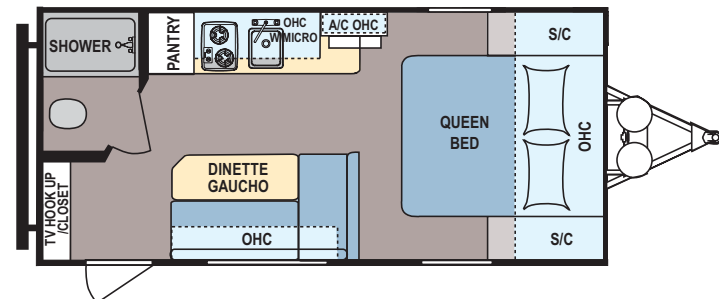
CTS14FD



CTS15BH



CTS16BH



CTS16QB

COLEMAN EXPEDITION STANDARDS AND OPTIONS

STANDARDS	LT	Expedition
120V Exterior Outlet	STD	STD
30A Power Cord	STD	Select
Diamond Plate (Black)	STD	STD
Easy Lube Axles	STD	STD
28" Entrance Door	STD	STD
Rear Jacks	STD	N/A
Porch Light w/Switch On Light	STD	N/A
Radial Tires	STD	STD
Awning	STD	STD
20 LB. LP Bottle(s)	STD	STD
Foot Pedal Flush Toilet	STD	STD
Full Extension Drawer		
Guides Throughout	STD	STD
Hard Valance Living Area	N/A	STD
Mini Blinds Throughout	STD	N/A
Pleated Night Shades (All Except Bunks & Kitchen)	N/A	STD
Skylight in Bath	STD	STD
Congoleum Carefree Slate		
Pattern Residential Flooring	STD	STD
Water Heater Bypass Kit	STD	STD
6 Gallon Gas/Electric DSI Water Heater	N/A	STD
Interior Speakers	2	STD
Microwave	STD	STD
Bath Fan	N/A	STD
Range Hood w/12V Light & Exhaust Fan	STD	STD
Spare Tire	STD	OPT

Tow Vehicle Disclaimer CAUTION: Owners of Dutchmen Manufacturing, Inc., recreational vehicles are solely responsible for the selection and proper use of tow vehicles. All customers should consult with a motor vehicle manufacturer or their dealer concerning the purchase and use of suitable tow vehicles for Dutchmen products. Dutchmen disclaims any liability or damages suffered as a result of the selection, operation, use or misuse of a tow vehicle. Dutchmen's limited warranty does not cover damage to the recreational vehicle or the tow vehicle as a result of the selection, operation, use or misuse of the tow vehicle.



OPTIONS	LT	Expedition
Fiberglass Walls	N/A	OPT
Aluminum Wheels	N/A	OPT
Pack-N-Play Door	N/A	Select
Power Awning	N/A	OPT
Entry Handle Assist (Main Door)	N/A	OPT
Solid Surface Kitchen Countertops w/Stainless Sink	N/A	OPT
Outside Shower	N/A	OPT
Free-Standing Dinette/Chairs	N/A	Select
Tri-Fold Sleeper Sofa	N/A	Select
Tri-Fold Sleeper Sofa - Campsite Side	N/A	Select
Swivel Rocker ILO Campsite Side Sofa	N/A	Select
8CU. FT. Double Door Refer	N/A	Select
8000 A/C	OPT	N/A
15000 A/C	N/A	Select
2nd A/C (Bedroom 13.5K)	N/A	Select
LCD TV (24" on 192RD & 270RL; 26" on all others)	N/A	OPT
Coleman Outside Stove/Grill w/Griddle	N/A	OPT
Dual 30LB. LP Bottles w/Black ABS Cover	N/A	OPT
Power Tongue Jack (Black)	N/A	OPT
Power Stab Jacks	N/A	OPT
Roof Ladder	N/A	OPT
Spare Tire	N/A	OPT

SUMMIT PACKAGE OPTION

K2 Upgraded Insulation (Includes Enclosed Underbelly)	N/A	PKG OPT
--	-----	---------

COLEMAN BASE CAMP PACKAGE OPTION

Coleman 4-in-1 Camp Table (1)	N/A	PKG OPT
Coleman Sleeping Bags (2)	N/A	PKG OPT
Coleman Lantern (1)	N/A	PKG OPT
Coleman 24 Can Stacker Cooler (2)	N/A	PKG OPT

Disclaimer: Product information is as accurate as possible as of the date of publication of this brochure. Features, floorplans and specifications are subject to change without notice. Please also consult our website for more current product information and specifications. Coleman®, , and  are trademarks of The Coleman® Company, Inc., and are used under license.



COLEMAN IS CAMPING!

Since 1900, the Coleman® Company, Inc. has led the world in the manufacture of camping gear and outdoor equipment. From the renowned Coleman lantern to stoves, tents, sleeping bags and coolers, Coleman's reputation for high-quality camping products is legendary.

Whether your outdoor activities involve hiking, camping, fishing, hunting, boating, swimming, tailgating or simply relaxing, Coleman offers everything you need to satisfy your family's dreams.



Coleman's floorplans are not only loaded with innovative features and value, they're designed to help your family get the most out of every camping experience. After all, Coleman *IS* Camping!

We invite you to visit your nearest Coleman RV dealer today, and find out for yourself why Coleman is the most respected name in outdoor recreation.



www.Coleman-RV.com
 Manufactured under license by:
 Dutchmen Manufacturing, Inc.
 PO Box 2164 • 2164 Caragana Court
 Goshen, Indiana 46527
 (574) 537-0600



Scan our quick response code to open our website, and explore the many products we have to offer!

YOUR LOCAL DEALER