



SPORT TREK



Your Venture Starts Here.



ST270VBH E-center with 32" LED internet ready smart TV, shown with Safari décor

A New Venture!

Introducing SportTrek lightweight travel trailers by Venture RV.

The SportTrek was created with new to the industry product concepts to enhance the RV lifestyle at an affordable price. Each SportTrek is engineered with specific features designed to provide maximum comfort, durability and consumer-inspired floor plans.

Exclusive features include Safe "T"ek Box hidden charging station, Comfort by Design Furniture Package which includes Sleep Tight Innerspring Mattress and Flipside Cushions.



Queen bed with 'Sleep-Tight' innerspring mattress and designer padded headboard



Bathroom features designer shower curtain, multi-shelved tub/shower surround, large mirrored cabinet and Cognac maple finished vanity



ST310VJS Mohave décor

Comforts of Home

Many consumer inspired ideas have been added to the SportTrek, such as large adjustable pantry, under the dinette storage door(s) and large overhead cabinets.

All SportTrek floor plans include a 3-burner stove with oven, double door refrigerator, microwave with turn table, high raise faucet, 60/40 deep double bowl sink with sink covers and a gas/electric DSI water heater.



Full size kitchen



Designer Ledge Stone backsplash



DVD/AM/FM/CD and MP3 surround sound system with 6 speakers (4 inside & 2 outside)



Convertible love seat (ST310VJS)

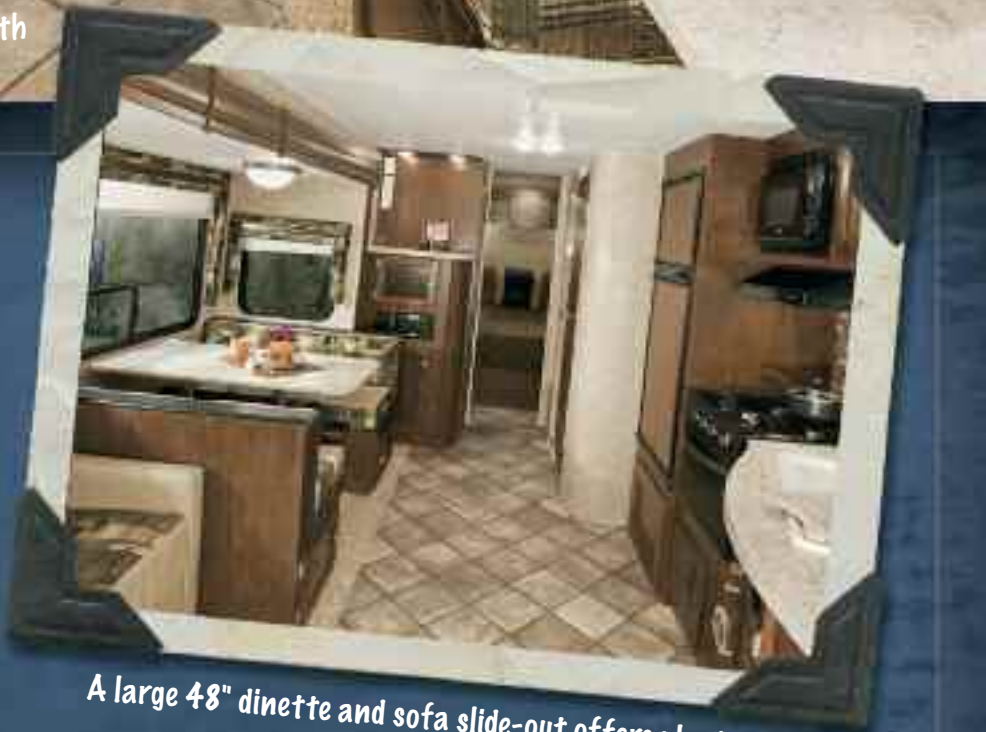


ST270VRL Spacious rear living room shown with available Hide-a-bed sofa and Safari décor

The Active Family

Our Comfort by Design Furniture Package has been designed for both style and coziness. The 270RL floor plan features two oversized swivel rockers, tufted back cushions in the large 48" dinette and 70" long jiffy sofa with storage compartment located under the cushions.

It's all about comfort and durability, that's why we designed the SportTrek with the two of the best flooring products on the market. We include both Shaw® R2X carpeting that is stain and soil resistant and a linoleum that is resistant to staining, cold cracking and mildew.



A large 48" dinette and sofa slide-out offers plenty of room for the family

SPORT TREK



Special Features



Hidden hand held device charging station (gets items off the counter top)



Adjustable Pantry



Shaw® R2X Stain Guard residential carpet and freeze/crack proof linoleum



Walk-thru bathroom (Model 310VJS, 310VQB, 320VIK)



Triple step entry with stairwell light



Full extension ball bearing drawer guides



Diamond plate rock guard

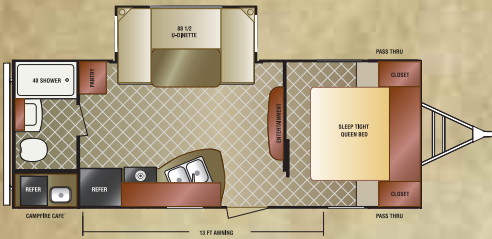


This furniture collection includes the Sleep Tight Innerspring Queen Mattress, Flipside sofa/dinette reversible cushions and oversized swivel rocker (in applicable floor plans)

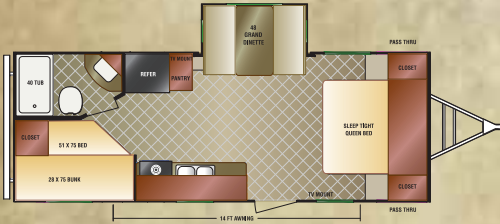


'Flip Side' furniture - two décor fabrics on one cushion so you can flip them over for a fresh décor look . standard on sofa and dinette cushions (varies by design)

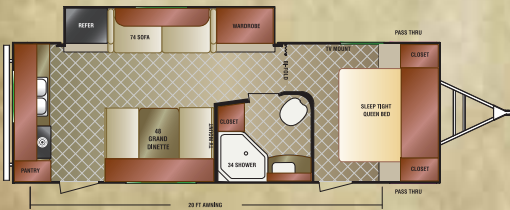
SportTrek Floor Plans



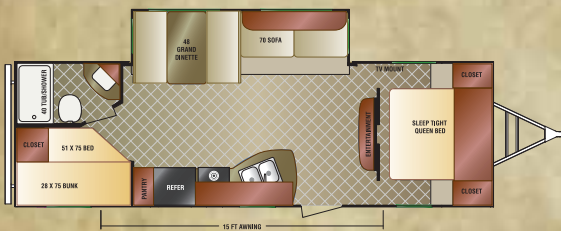
ST235VRB



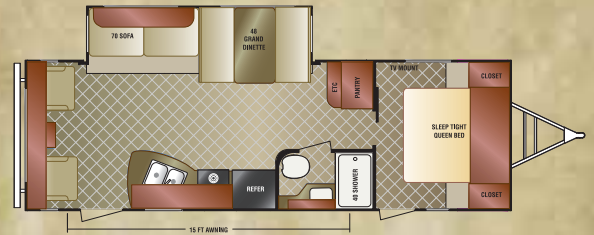
ST230VBH



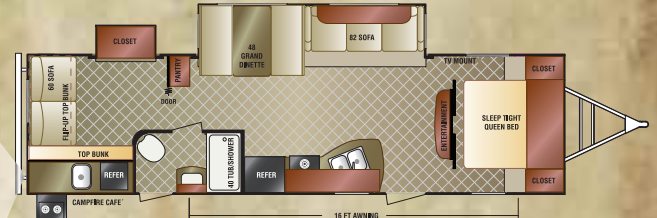
ST250VRK



ST270VBH



ST270VRL



ST310VJS



ST310VQB



ST320VIK

SPECIFICATIONS: ST235VRB ST230VBH ST250VRK ST270VBH ST270VRL ST310VJS ST310VQB ST320VIK

| | | | | | | | | |
|-------------------|------------|------------|------------|------------|------------|------------|------------|------------|
| UVW | 4680 | 4340 | 5210 | 5380 | 5500 | 6720 | 6550 | 7250 |
| Hitch Weight | 500 | 590 | 500 | 660 | 700 | 850 | 960 | 860 |
| Axle Weight | 4240 | 3750 | 4770 | 4800 | 5040 | 6190 | 6190 | 6390 |
| Carrying Capacity | 1260 | 1660 | 1230 | 1340 | 1100 | 1260 | 1750 | 1350 |
| GWR | 6000 | 6000 | 6500 | 6800 | 6800 | 8300 | 8300 | 8600 |
| Interior Height | 6' 6" | 6' 6" | 6' 6" | 6' 6" | 6' 6" | 6' 6" | 6' 6" | 6' 6" |
| Exterior Height | 10' 3" | 10' 3" | 10' 7" | 10' 7" | 10' 7" | 10' 9" | 10' 9" | 11' 1" |
| Exterior Width | 8' | 8' | 8' | 8' | 8' | 8' | 8' | 8' |
| Exterior Length | 26' 5" | 26' 8" | 28' 9" | 30' 8" | 30' 3" | 34' 11" | 34' 11" | 35' 6" |
| Tire Size | 14" Radial | 14" Radial | 14" Radial | 14" Radial | 14" Radial | 15" Radial | 15" Radial | 15" Radial |

Tanks – Fresh water: 40 gallons Gray Water: 32 gallons (64 gallons on ST250VRK) Black Water: 32 gallons

*This weight reflects the rolling average unit weight for each model. Your trailer weight will vary according to optional equipment.

Standards & Options



Bedroom

- Designer padded headboard
- Sleep Tight innerspring mattress
- Solid wood nightstands
- Overhead Cabinets
- Large shirt closet with built-in shelf
- 2 Gas struts under the bed storage
- Solid wood privacy door(s) (N/A 230VBH and 250VRK)
- TV and satellite connections
- Hard valances
- Night shades

Living Room/Kitchen

- Built-in radius entertainment center with halogen lighting (N/A 230VBH)
- DVD/CD/MP3/AM/FM Stereo
- Residential freeze/crack proof linoleum
- Shaw® R2X stain resistant carpet
- Panoramic slide-out windows
- 6' 6" Interior height
- Cognac maple cabinet doors and drawers
- Tilt-out utility tray
- Ledge stone backsplash
- High rise satin nickel faucet
- 60/40 Deep sink with sink covers
- Safe "T"ek box
- Full extension ball bearing drawer guides
- 48" Grand dinette (VBF)
- Jiffy sofa with storage (varies by floor plan)
- (4) Flush mount interior speakers

Appliances

- Microwave with turntable
- 6.3 Cubic foot refrigerator
- 3-Burner stove top with oven
- Vented range hood with light
- Coleman® Whisper A/C
- 6 Gal DSI gas/electric water heater

Bathroom

- Foot flush toilet
- Multi-shelf shower or tub
- Designer shower curtain
- Mirrored medicine cabinet

Exterior/Construction Features

- Diamond plate rock guard
- EZ accesses LP tank cover
- EZ exchange (2) 20# LP tanks with auto changeover
- EZ water management system
- Large pass-thru baggage doors
- Wide-trek axles
- AL-KO axles with auto adjust brakes
- Triple step entry step with stairwell light
- Heated and enclosed underbelly
- Fiberglass exterior with champaign colored front and rear profile
- Deep slides with champaign colored slide-out ends
- Exterior shower
- Tinted Safety Glass Windows
- Hitch Light
- Digital antenna receiver
- Large assist grab handle
- Cable/satellite connection (2 locations)
- (4) Stabilizer jacks
- 5/8" Tongue and groove plywood floor (glued)
- Walkable roof
- (2) Marine grade exterior speakers
- Alpha Superflex roof material
- Gutter with downspouts
- Gutters above slide-outs
- Extra long awnings

Options

- Power awning
- Hide-a-bed sofa
- Outside grill
- Fantastic fan
- Flip-up cargo tray
- 15" Radial tires with aluminum wheels (4)
- 15,000 BTU A/C
- RVIA/QAI/Canadian standards
- RVIA seal
- State seal



Power stabilizers



Flip up cargo tray



Power tongue jack



Spare tire & cover



15" Radial tires with aluminum rims

Trail Package

- Spare Tire, Carrier and Cover
- Ladder
- Black Tank Flush

Entertainment Package

- Swing Arm Mounting Bracket
- 24" or 32" HD LED Smart TV

Power Package

- Power Awning
- Power Tongue Jack
- 4 Power Stabilizer Jacks



SPORT TRAK

Your Venture Starts Here.



Proud to Sponsor the Future

Venture RV is proud to sponsor Outdoor Promotions, Inc. Outdoor Promotions established Crappie Kids Fishing Rodeos which are held in conjunction with all our tournaments to encourage America's youth to actively participate in the preservation of our lakes, the sport of fishing, and their educational goals. All participants are eligible for the six (6) \$2000 college scholarships awarded every year.



Venture RV
0985N 900W
Shipshewana, IN 46565

phone 888.988.8440
fax 260.768.4017



Due to continual research and advances, manufacturer reserves the right to change specifications, design, price and equipment without notice, and assumes no responsibility for any error in this literature. Some items shown are not included as standard or optional equipment.

A Division of KZ RV

WWW.VENTURE-RV.COM