

# CHAPARRAL



CHAPARRAL FIFTH WHEELS



OPEN TRAIL

LITE PROFILE

MID PROFILE

SIGNATURE



## Explore the difference with Chaparral!

From lightweight to luxury, Chaparral is engineered to go where you want, when you want. Find the fifth wheel that fits your RV lifestyle.

### OPEN TRAIL

pg 4

**Chaparral Open Trail** is the most affordable and feature-packed fifth wheel on the market today!



### LITE PROFILE

pg 6

**Chaparral Lite Profile** is designed with the 1/2 ton truck in mind. It's so lightweight and aerodynamic you will forget you are towing anything.



### MID PROFILE

pg 8

**Chaparral Mid Profile** has been the flagship product for Chaparral for over a decade! Residential features, more maneuverable and weighs thousands less than the competition.



### SIGNATURE

pg 10

**Chaparral Signature** was designed with luxury appointments for the true camping enthusiast. You will feel at home while on the road in the Chaparral Signature.



FEATURES

pg 12

CONSTRUCTION

pg 13

STANDARDS & OPTIONS

pg 14







Signature model 343RLTS shown with optional 18 cu. ft. residential refrigerator and optional rolling island.



# OPEN TRAIL

The most affordable, feature-packed fifth wheel in the market today, the Open Trail is designed to be lightweight on your truck and even lighter on your wallet. The Open Trail has all the features you have come to expect in a fifth wheel at a fraction of the cost. Laminated and vacu-bonded aluminum-framed sidewalls and floors provide the strongest structure in the industry. As with all Chaparral models, Open Trail features Azdel composite panels in the sidewalls to reduce weight and provide a stronger, greener wall.

Open Trail also has Congoleum flooring with a 3-year warranty, Ultra leather furniture, a 6-gallon gas/electric water heater, fully-enclosed and heated underbelly, outside shower, and much, much more!



The spacious slide-out room allows your family to move around comfortably. Dinette converts to additional sleeping area.



Enjoy all the amenities of home with a fully-equipped kitchen.



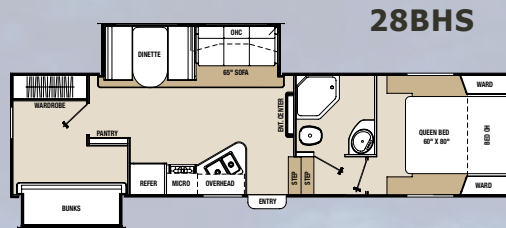
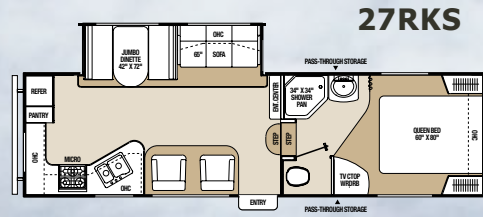
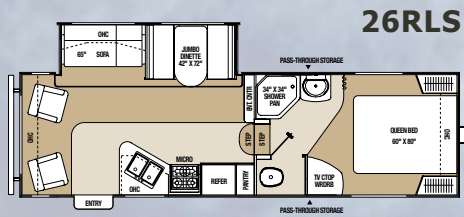
Easy-access bathroom with large glass enclosed shower and mirrored medicine cabinet.



Convenient laundry chute in select models.



# FLOORPLANS



## SPECIFICATIONS

	26RLS	27RKS	28BHS
Hitch Weight (lbs.)	1,240	1,290	1,320*
Base Weight (lbs.)	7,060	7,300	7,650*
GVWR (lbs.)	9,800	9,800	9,800
Cargo Capacity (lbs.)	2,740	2,500	2,150*
Exterior Length	29' 8"	30' 11"	33' 7"
Exterior Height	12' 1"	12' 1"	12' 1"
Exterior Width	96"	96"	96"
Fresh Water (gal.)	46	46	46
Gray Water (gal.)	33	66	66
Black Water (gal.)	33	33	33
Awning Size	18'	20'	17'
* estimated			



Model 28BHS kitchen shown in Godiva décor.



Model 28BHS living area shown in Godiva décor.



Rest comfortably on a pillow-top queen mattress. There's plenty of storage space under the bed and a reading light above the bed.



# LITE PROFILE

We believe that a natural towing experience — one in which you can forget that you are actually pulling something — can be achieved thru great aerodynamics and light weights. Our combination of Alumaticage construction and Turn Tec Engineering has taken towability to a whole new level. Chaparral Lite fifth wheels are available in single, double and triple slide-out floorplans that have been designed for today's 1/2 ton pickup trucks and people that enjoy the RV lifestyle.



Model 280RLS bedroom with multiple storage areas, overhead reading lights and Serta® pillow-top queen mattress.



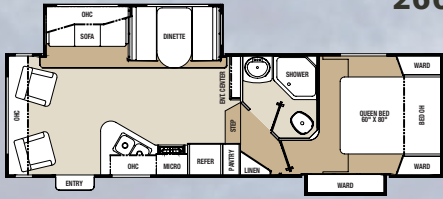
Extra storage space under the sofa keeps extra blankets and pillows hidden away.



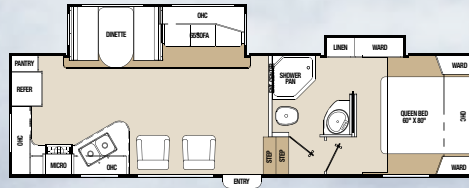
Oversized glass shower is standard in Lite Profile.

# FLOORPLANS

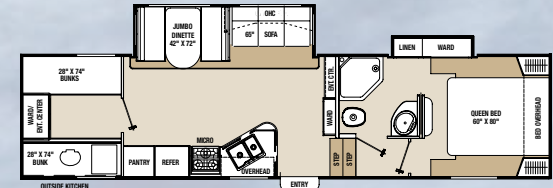
**266SAB**



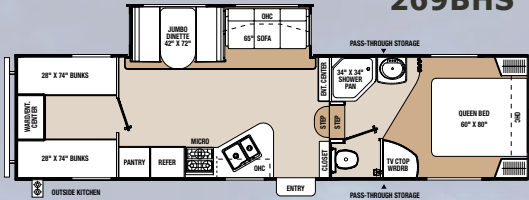
**272RKS**



**279BHS**



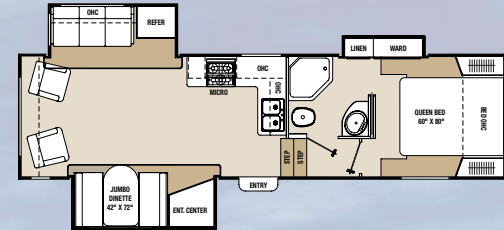
**269BHS**



**274RLSA**



**280RLS**



## SPECIFICATIONS

	<b>266SAB</b>	<b>269BHS</b>	<b>272RKS</b>	<b>274RLSA</b>	<b>279BHS</b>	<b>280RLS</b>
Hitch Weight (lbs.)	1,430	1,680	1,350	1,480	1,890	1,610
Base Weight (lbs.)	7,410	8,320	7,081	7,610	8,216	8,260
GVWR (lbs.)	9,800	11,200	TBA	9,800	11,200	11,000
Cargo Capacity (lbs.)	2,130	2,880	2,399	2,131	2,770	2,740
Exterior Length	30' 1"	34' 7"	31' 6"	31' 5"	35' 10"	32' 8"
Exterior Height	11' 11"	12' 1"	11' 11"	11' 11"	11' 11"	12' 1"
Exterior Width	96"	96"	96"	96"	96"	96"
Fresh Water (gal.)	47	47	47	47	47	47
Gray Water (gal.)	42	84	84	84	84	42
Black Water (gal.)	42	42	42	42	42	42
Awning Size	15'	18'	20'	20'	18'	10'



# MID PROFILE

The Mid Profile has been the flagship product for the Chaparral brand for over a decade. Chaparral Mids come well-equipped with features not found in our competitors, such as residential features throughout the coach including non-air mattress hide-a-bed sleeper sofas, Serta® mattresses and optional La-Z-Boy® recliners. You will find elegant interiors that surround you with a home-like feel in Chaparral.



Model 330FBH front bunk area.



Model 325MKS shown in Godiva décor



Model 286RKS shown in Godiva décor.



Magic Night Sleep System sofa for a better night's sleep without the hassle of a leaky air mattress.

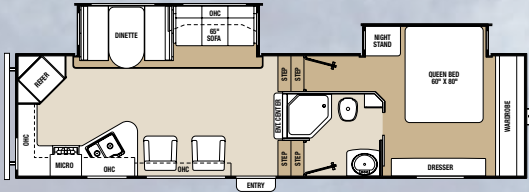


286RKS living area shown in Godiva décor.



# FLOORPLANS

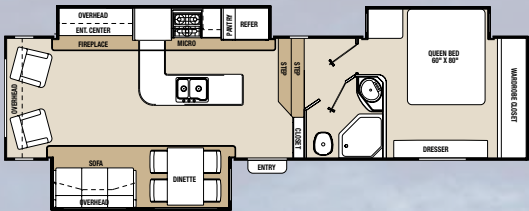
**286RKS**



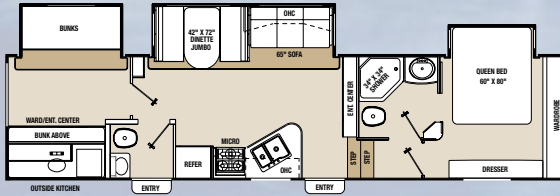
**328RES**



**325MKS**



**345BHS**



## SPECIFICATIONS

	<b>286RKS</b>	<b>325MKS</b>	<b>328RES</b>	<b>345BHS</b>
Hitch Weight (lbs.)	2,090	2,110	2,060	1,900
Base Weight (lbs.)	9,030	10,070	10,210	10,640
GVWR (lbs.)	12,000	12,000	12,000	13,500
Cargo Capacity (lbs.)	2,970	1,930	1,511	2,860
Exterior Length	34' 9"	35' 8"	35' 8"	38'
Exterior Height	12' 6"	12' 6"	12' 6"	12' 6"
Exterior Width	96"	96"	96"	96"
Fresh Water (gal.)	60	60	60	60
Gray Water (gal.)	90	75	90	75
Black Water (gal.)	45	75	45	75
Awning Size	18'	16'	16'	18'



Dress up your Chaparral with our partial premium paint option shown above.



# SIGNATURE

The all-new Chaparral Signature Series was designed with the camping enthusiast in mind. The Chaparral Signature offers you more than any other Fifth Wheel in its class and will leave you saying VALUE, VALUE, VALUE! You can pay more for other fifth wheels in Chaparral Signature's class, but you will not get more!

Ten reasons you will love and want to own a Chaparral Signature fifth wheel:

- Total colored Signature high gloss exterior
- DuPont™ Corian® solid surface counters
- 7-way wireless remote that operates slide outs, jacks and more!
- Washer/dryer prep with dedicated closet
- 50 amp service with detachable cord
- Push button rear electric jacks
- Satellite-ready
- 10-gallon quick recovery gas/electric water heater
- Vacu-bonded aluminum framed side walls with Azdel composite panels
- Vacu-bonded aluminum framed floor construction



Model 327RLKS shown in Nutmeg décor



Spacious slide-out living area shown with optional residential pedestal table with four chairs and optional La-Z-Boy® recliners.



Rest comfortably on a Serta® pillow-top queen mattress. There's plenty of storage space and a reading light above the bed.



Easy-access bathroom with large glass enclosed shower and hardwood medicine cabinet. (343RLTS only)

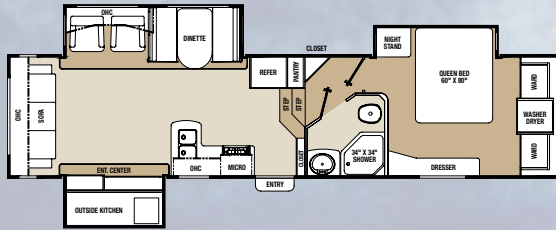


Convenient laundry chute in select models.

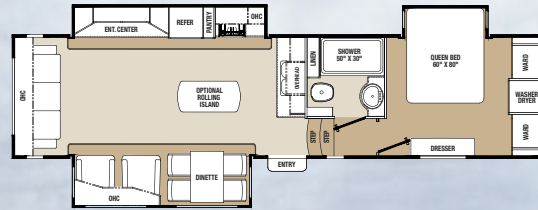


# FLOORPLANS

**327RLKS**



**343RLTS**



**331MKS**



Model 343RLTS kitchen includes an island for easy entertaining or food prep (shown in Nutmeg décor).



Model 327RLKS bedroom has his & hers closet for a home-like feel. The Chaparral Signature also has a dedicated washer/dryer closet with prep.

## SPECIFICATIONS

	<b>327RLKS</b>	<b>331MKS</b>	<b>343RLTS</b>
Hitch Weight (lbs.)	1,980	1,990	2,070
Base Weight (lbs.)	10,470	10,170	10,370
GVWR (lbs.)	11,900	12,000	12,000
Cargo Capacity (lbs.)	1,430	1,630	1,630
Exterior Length	37' 8"	35' 10"	36' 7"
Exterior Height	12' 6"	12' 6"	12' 6"
Exterior Width	96"	96"	96"
Fresh Water (gal.)	60	60	60
Gray Water (gal.)	90	90	90
Black Water (gal.)	45	45	45
Awning Size	20'	16'	16'



# FEATURES

## AVAILABILITY

 OPEN TRAIL

 LITE PROFILE

 MID PROFILE

 SIGNATURE



Coachmen Chaparral and its engineering team have developed one of the best front cap designs in the business! One look at our cap design and you will see how our turn radius is better.



Most of our Chaparral units have been designed with the short bed truck in mind.



The bus-style slam latch baggage doors provide convenient and secure access to your cargo.



Astro-Foil insulation — insulates under our bed/bath decks and under our slide-out floors.



12 volt battery disconnect quickly and conveniently provides a quick shutdown.



The Serta® pillow-top mattress provides a comfortable night's rest in the Chaparral.



Pack Max Storage — larger, insulated pass-through storage doors.



A universal docking station conveniently houses, in one location, items such as city water hookup, fresh water fill, cable TV hook-up and black tank flush.



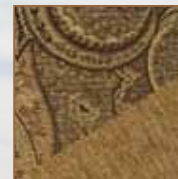
Our outside kitchen featuring a half-sized refrigerator, pull-out shelf with Coleman® grill and plenty of cabinet space.



7-way one-touch remote for awning slide-outs and landing gear provide push button convenience on your camping trip.



## DÉCOR OPTIONS



GODIVA



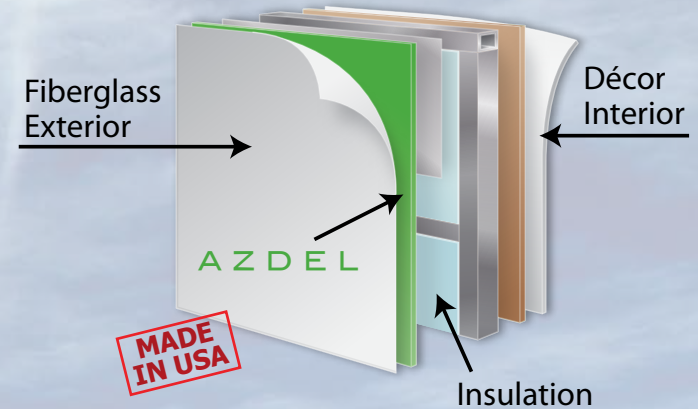
FALL RIVER



NUTMEG



# CONSTRUCTION



Coachmen RV uses Azdel Composite Panels to replace wood in RV sidewalls. Made in the USA, Azdel Composite Panels are constructed using a blend of polypropylene and fiberglass, creating an extremely strong and lightweight wall.

CONSTRUCTION

## ROOF CONSTRUCTION (R-13)

- 1 One-piece EPDM rubber roof with 12-year warranty
- 2 3/8" Fully walkable roof decking
- 3 Fiberglass batten insulation
- 4 5" Roof trusses
- 5 1/8" Ceiling decking with vinyl protection

## TIRES AND CHASSIS

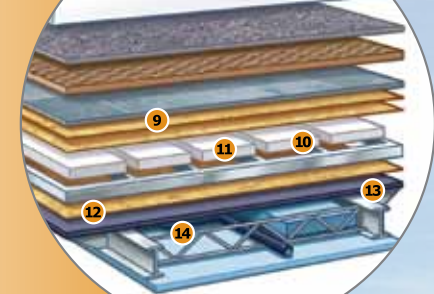
- 6 10" or 8" Steel "powder coated" I-beam frame
- 7 15" or 16" Radial tires
- 8 EZ Lube axles (Mid only)

## Strengthen Your Ride

### 6-LAYER VACUUM-BONDED FLOOR

- 9 5/16" Luan
- 10 Second Layer of 5/16" Luan
- 11 High Density Block Foam Insulation
- 12 Welded Aircraft Grade Aluminum Framing
- 13 Energy Brace Substrate
- 14 Floor Brace Moisture Resistant Sheating

### RV Floor Cut-Away



The strength of your fifth wheel lies in its foundation! Our unique floor construction provides THREE TIMES THE STRENGTH and overall structural integrity compared to plywood or particle board floors used in a majority of competitor fifth wheels on the market today.



# STANDARDS & OPTIONS

S – STANDARD

O – OPTIONAL

N/A – NOT AVAILABLE

INTERIOR	Open Trail	Lite Profile	Mid Profile	Signature
Maple cabinets	S	S	S	S
Mortise and tenon cabinet doors	S	S	S	S
Smoked glass cabinet doors (select areas)	S	S	S	S
Brushed nickel hardware	S	S	S	S
Congoleum® Designer Carefree Resilient sheet flooring (bath & kitchen)	S	S	S	S
Residential carpet in living room & bedroom	S	S	S	S
Jackknife sofa	S	S	S	S
Swivel rockers (2) (select models)	S	S	S	S
Jumbo booth dinette with pedestal table	S	S	S	S
Hard window valances with lambrequin legs	S	S	S	S
Pleated night window shades	S	S	S	S
AM/FM/CD/DVD player with MP3 hook-up	S	S	S	S
Digital television antenna	S	S	S	S
Cable TV hook-up	S	S	S	S
Slide-out room – 6'1" interior height	S	S	S	S
LP leak alarm	S	S	S	S
Fire extinguisher	S	S	S	S
Smoke detector	S	S	S	S
CO detector	S	S	S	S
Satellite hookup	N/A	N/A	S	S

GALLEY	Open Trail	Lite Profile	Mid Profile	Signature
Seamless laminate countertops	S	S	S	N/A
Stainless steel double bowl sink	N/A	S	S	S
Sink covers (2)	N/A	S	S	S
Hi-rise faucet	S	S	S	N/A
Hi-rise faucet with pull-out sprayer	N/A	N/A	O	S
6 cubic foot double door refrigerator	S	S	S	N/A
3-burner stove top with large 21" oven	N/A	S	S	S
Microwave oven – turn style	S	S	S	S
Knife block behind stove top	N/A	N/A	S	S
Lighted power range hood	S	S	S	S
Large drawers with steel ball bearing guides	S	S	S	S
Trash can storage area	S	S	S	S
Large pantry	S	S	S	S

SLEEPING	Open Trail	Lite Profile	Mid Profile	Signature
60" x 80" residential Serta® queen bed	N/A	S	S	S
Large storage area beneath bed	S	S	S	S
Cable & HD television ready	S	S	S	S
Flat floor bedroom – bedroom slide-out models	N/A	N/A	S	S

BATH AND WATER	Open Trail	Lite Profile	Mid Profile	Signature
Porcelain toilet with foot pedal flush	N/A	S	S	S
Powered bath vent	S	S	S	S
Hardwood medicine cabinet with mirror	N/A	S	S	S
Shower surround	S	S	S	S
Skylight over the shower	S	S	S	S
Decorative glass shower door	S	S	S	S
Residential walk-in shower with sliding glass doors (343RLTS only)	N/A	N/A	S	S
Toilet paper holder	S	S	S	S
Towel rack	S	S	S	S
6-gallon gas/electric hot water heater with DSI	S	S	N/A	N/A
10-gallon gas/electric hot water heater with DSI	N/A	N/A	S	S
On-demand water pump	S	S	S	S
Water heater bypass valve	S	S	S	S
Black tank flush	S	S	S	S

ELECTRICAL/HEATING/AC	Open Trail	Lite Profile	Mid Profile	Signature
12 volt battery disconnect	N/A	S	S	S
30 amp service	S	S	S	S
55 amp electrical converter	S	S	S	S
13,500 BTU central air conditioner	S	S	S	S
Double 30 lb. LP bottles with auto change over	S	S	S	S
31,000 BTU energy efficient furnace	S	S	S	S
GFI circuit	S	S	S	S
Awning light receptacle with switch	N/A	S	S	S
Residential halogen lighting in living area ceiling	N/A	N/A	N/A	S
7-way one-touch remote for awning, slide-outs and landing gear	N/A	N/A	N/A	S



<b>EXTERIOR/CONSTRUCTION</b>	<b>Open Trail</b>	<b>Lite Profile</b>	<b>Mid Profile</b>	<b>Signature</b>
Aluminum framed laminated sidewalls with Azdel Composite Panels	S	S	S	S
Gel coated filon exterior walls	S	S	S	S
Pre-backed for aftermarket slide-out awnings	S	S	S	S
Aluminum framed laminated floor	S	S	S	S
5" roof trusses with 3/8" fully walkable roof	S	S	S	S
Rubber roof	S	S	S	S
Dark tint safety glass windows	S	S	S	S
TurnTec fiberglass front cap	N/A	S	S	S
Heavy-duty 5,200 lb. easy lube axles	N/A	N/A	S	S
Radial tires	S	S	S	S
Silver rally wheels (N/A on 355RLTS, 345BHS)	S	S	S	S
Electric front jacks	S	S	S	S
Quick release extra long leg pins	S	S	S	S
Rear stabilizer jacks	S	S	S	N/A
Rear bumper with sewer hose storage	S	S	S	S
Universal docking station	N/A	S	S	S
Attic vent	N/A	N/A	S	S
Patio awning	S	S	S	S
Pack Max Storage with slam latch baggage doors	N/A	S	S	S
Outside speakers	S	S	S	S
Extra large swing-out grab handle at entrance	N/A	S	S	S
Outdoor kitchen with grill, sink, refrigerator and storage (269BHS, 279BHS, 345BHS, and 327RLKS only) (327RLKS no sink)	N/A	S on avail. models	S on avail. models	S on avail. models
Breakaway switch	S	S	S	S
Eskimo Extreme Insulation Package (thermal reflective insulation adds an additional R-15 to the coach)	N/A	N/A	N/A	S

<b>AVAILABLE OPTIONS</b>	<b>Open Trail</b>	<b>Lite Profile</b>	<b>Mid Profile</b>	<b>Signature</b>
Godiva décor	O	O	O	O
Fall River décor	O	O	O	O
Nutmeg décor	O	O	O	O
Corian® countertop	N/A	N/A	O	S
Freestanding dinette with 4 chairs	O	O	O	O
Comfort air ventilator fan	N/A	N/A	O	O
Ex-large 8 cu. ft. double door refrigerator	N/A	N/A	O	S
18 cu. ft. residential refrigerator with 800 watt inverter (343RLTS only)	N/A	N/A	N/A	O
9 cu. ft. stainless steel refrigerator	N/A	N/A	N/A	O
Raised panel refrigerator door front	N/A	S	O	O
Magic Night Sleep System sofa	N/A	O	O	O
80" Magic Night Sleep System sofa	N/A	N/A	N/A	O
L-shape sofa (328RES only)	N/A	N/A	O	N/A
La-Z-Boy® recliners in place of swivel rockers (278RLDS, 280RLS, 286RKS, 325MKS, 327RLKS, 343RLTS)	N/A	N/A	O	O
Electric ceiling fan	N/A	N/A	O	O
Electric fireplace (310RLTS, 325MKS, 280RLS, 345BHS, 327RLKS, 343RLTS)	N/A	N/A	O	O
26" LCD HD television	O	O	O	O
32" LCD HD television (N/A in 278RLDS)	N/A	N/A	O	O
40" LCD HD television (325MKS, 327RLKS, 343RLTS)	N/A	N/A	O	O
26" LCD HD television – bunk room (330FBH, 345BHS, 355RLTS)	N/A	N/A	O	N/A
Magic Night Sleep System sofa – bedroom (345BHS, 355RLTS)	N/A	N/A	O	N/A
Thermopane tinted safety glass windows	N/A	N/A	O	O
LED fiberglass hitch cover	N/A	O	O	S
Super duty 6,000 lb. easy lube axles (standard in 355RLTS)	N/A	N/A	O	O
Equa-flex suspension	N/A	N/A	O	O
15" aluminum wheels (N/A in 355RLTS)	N/A	O	O	O
16" aluminum wheels (standard in 345BHS, 355RLTS)	N/A	N/A	O	O
Spare tire with steel rim	S	O	O	O
Rear ladder	O	O	S	S
Electric rear stabilizer jacks (N/A in 355RLTS)	N/A	N/A	O	S
50 amp service with prep for 2nd A/C	N/A	N/A	O	S
15,000 BTU central air conditioner	O	O	O	O
Electric patio awning	N/A	O	O	O
Premium partial paint	N/A	O	O	N/A

## MANDATORY PACKAGES

### DRY CAMP PACKAGE

12 volt stereo/MP3 compatible  
All slide out lights are 12 volt  
Huge fresh water, gray and black tanks  
Space for dual batteries  
Heavy-duty axles for off-road use  
Dedicated space for after market generator — Mid Profile



### POLAR PACKAGE

Manufactured for cold weather camping with:

Roof insulations — R-13  
Wall insulations — R-11  
Floor insulations — R-14

Fully enclosed underbelly with heated and enclosed dump valves and Thermal Insulation in side floors and bed and bath deck



### TURNTec ENGINEERING — #1 IN INDUSTRY

Built for short bed trucks. TurnTec combines a specially-designed frame utilizing 45-degree corners and an aerodynamic front cap. The result is the most maneuverable fifth wheel in existence!





## Free One Year Membership – Coachmen Owners' Association

Coachmen is proud to sponsor the largest manufacturer sponsored camping club in North America ... Coachmen Owners' Association (COA). COA provides you a world of ways to enjoy your RV. This is FUN ON OVERDRIVE and provides: Free Trip Routing, Exciting Tours & Rallies, Free Campground Directory, Local/State Club Activities, Easy RVing Magazine Free, Theme Park Discounts, Fuel Discounts, Free onebigplanet® Memberships with discounts at 180,000 merchants and Much More!

**Every new Coachmen RV buyer is eligible for a 1 Year FREE membership in the Coachmen Owners' Association. It all adds up to an easy ownership experience!**



## Travel Easy™ Roadside Assistance

RVing is easier with Coachmen's Travel Easy™ Roadside Assistance provided FREE the first year of ownership to those who purchase a New Coachmen RV. Administered by Coach-Net, this service provides you with 24/7 operational, technical and emergency road service coverage. Also included is towing, fuel delivery, jump starts, lockout service, tire changes, mobile mechanic and unlimited technical assistance. Anywhere. Anytime. Travel Easy™ is the security of knowing that help is an easy phone call away.

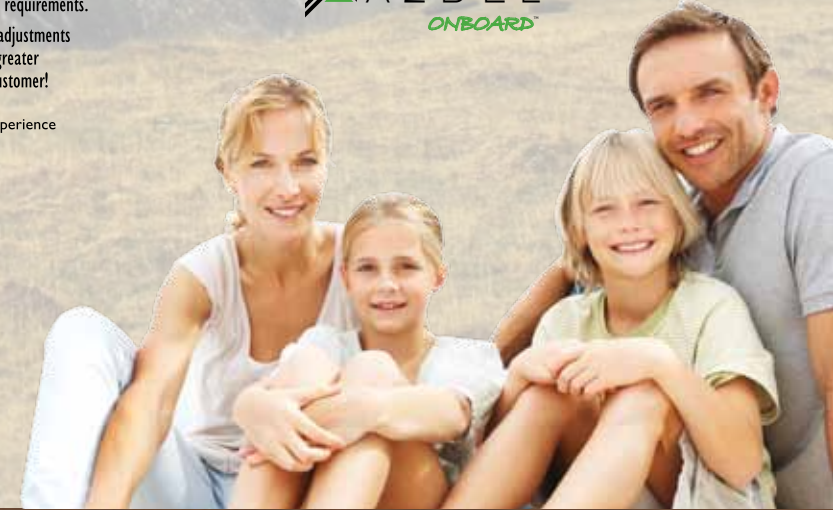


**Forest River, Inc. encourages our customers to purchase their Forest River products from a local dealership whenever possible for the following reasons:**

It is the goal of Forest River, Inc. that all of our RV owners fully enjoy the RV experience and that customer satisfaction meets or exceeds their expectations!

- 1) Forest River, Inc. dealers are independently owned and operated businesses so priority service and scheduling is at their discretion and is often provided to customers that purchased their unit at that dealership.
- 2) Purchasing locally allows customers to establish meaningful relationships with a dealer, enhancing the RV experience through assistance with product questions, user tips or RV regulations for your state or country, and much more!
- 3) Canadian customers must meet requirements to bring an RV purchased out of the country to their home. These requirements may involve additional inspections and certifications, taxes and fees. Your local Canadian Dealer is a professional at meeting these requirements.
- 4) Scheduling timely warranty repairs and adjustments through a local dealership provides far greater flexibility and convenience to you, the customer!

**We offer and include major brands in our products!**



## YOUR CHAPARRAL DEALER



**Learn More**  
Scan this barcode using a QR Reader on your smart phone to learn more about Forest River.



A Berkshire Hathaway company.

All information contained in this brochure is believed to be accurate at the time of publication. However, during the model year, it may be necessary to make revisions and Coachmen reserves the right to make all such changes without notice, including prices, colors, materials, equipment and specifications as well as the addition of new models and the discontinuance of models shown in this brochure. Therefore, please consult with your Coachmen dealer and confirm the existence of any materials, design or specifications that are material to your purchase decision.



**423 N. Main Street • P.O. Box 30  
Middlebury, IN 46540**

To learn more about Coachmen RV and our products and see how Coachmen is making the easy life easier, visit [www.coachmenrv.com](http://www.coachmenrv.com)