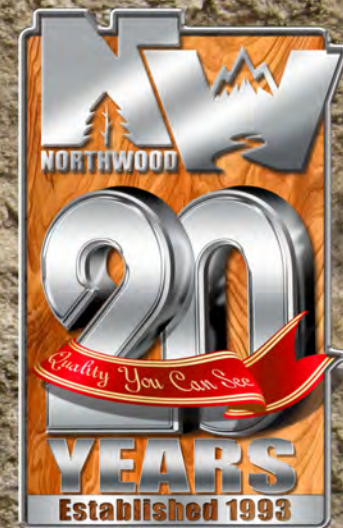


Arctic Fox Campers

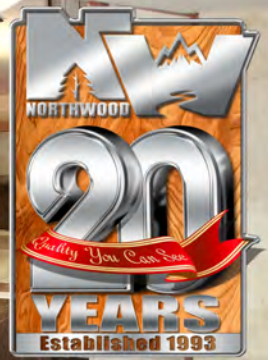


Over 10,000 Campers Built Since 1999
www.Northwoodmfg.com



**Quality Construction,
Distinct Design,
Full Wall
Truck Campers
Done Right.**

Shimmering Sands Interior



Arctic Fox

Crystal Onyx Interior



Riviera Dune Interior



10,000 Arctic Fox Campers Built 1999-2012

122 REASONS TO BUY AN ARCTIC FOX CAMPER

Construction

Aluminum Superstructure
Welded Aluminum Framing (.060" - .125")
Solid Fill Anchor Blocking
2 lb. Virgin Block Foam Insulation
Full Walk-On Roof
Crowned Roof: 3-1/2" Tapered to 1-1/2"
Thick Seamless One Piece Roof Membrane
Transverse Floor Maximizes Floor Space
Continuous 1 Piece Fiberglass Cabover
Rack and Pinion Slide Out Mechanism

Exterior

LED Running Lights
LED Tail Lights - Recessed Automotive Style
Large 1" Thick, Insulated Compartment Doors
Metal Latches, Catches, and Pulls
Automotive Bulb Seals Around All Doors
12V Light in Valve Compartment
Removable 110V Power Cord (30' Length)
Outdoor High Pressure Rinse Station
5/8" Cast Iron Gas Manifold
Diamond Plate Armor Above Bumper
Entry Door w/ 2 View Windows
Aluminum Bumper w/ Dual Access
3 Position Bumper Step Mount
Entry Door/ Patio Light
Exterior Convenience Light (Non-slide Side)
Black Tank Flush
Exterior 110 Volt Outlets (GFI Protected)
Rain Gutters and Large Drip Spouts
LP Hookup for BBQ
Torque Windows
80/20 Window Tint
Safety Glass Windows
Thermal Pane Window Option
Optional 2500 W Onan Cummins Generator
12 Volt Power Awning Option

Bathroom

Fiberglass Shower Stall (Wet Bath Only)
Bathroom Skylight
Fold-Away Clothes Hanger
Vanity Cabinet & Mirror
Freeze Resistant Waterlines
Marine Grade Toilet

Interior

Solid Wood Cabinetry
Face Frame Cabinet Construction
3 Interior Color Décor Choices
AM/FM CD Player w/ 6 Speakers
Adjustable Rheostat Controlled Lights (5)
Recessed Halogen Lighting
Wood Trim Accents
Ceiling Carpet Liner
2 Fluorescent Lights
Night/Privacy Shades
Direct Spark Ignition LP/110 Water Htr
Adjustable Heat Vents
Systems Monitor Panel
12 Volt Disconnect Switch
8 - 110 Volt Outlets (9 in Dry Bath Models)
Large Capacity Holding Tanks
Enclosed Heated Holding Tanks
Enclosed Water Heater Termination Valves
Pre-Wired for Solar Panel
Pre-Wired for Satellite Receiver
Power Converter with Charger
Charge Wizard © Battery Maint. System
Generator Ready (Most Models)
Generator Transfer Switch (Most Models)
Optional Carpet Kit (n/a 865 & 992)
20K Auto Ignition Furnace
Storage Step into Cab Over

Slide Out

All Dinettes are Full Wall Slideouts
26" Deep Slide (Most Models)
Oversized Dinette Window
Dream Dinette
Longer/Wider Dinette Table
Dinette Converts to 43"x 76" Bed (Most Models)
4 Seals on Slide-Out
Below Seat Storage
High Density Foam Seat Cushions
Optional Fold Down Ohd Bunk w/ Pad
Below Step Storage

Kitchen

Galley Overhead Cabinets w/ Shelves
Solid Wood Doors
Single Lever Faucet w/ Pullout Sprayer
Counter Extension (n/a 865 & 992)
Galley Backsplash
Large Kitchen Skylight w/ Shade
Tough Designer Flooring
Double Door 6 CU FT. Fridge (LP/110-optional 12V)
Deluxe Refrigerator Doors
Dinette Storage Drawer
Dinette Storage Door
Pull-Out Pantry
TV Antenna/ HD/ w/Signal Amplifier
Full Extension Ball Bearing Drawer Glides
Optional Convection Microwave Oven

FOX VALUE PACKAGE

2500 lb. Capacity Electric Jacks
with Hardwire or Remote Control Operation
plus 2nd Backup Emergency Controller
Large Rear Awning (7'x 8')
Extra Long/Deep Rear Sliding Storage Tray
7 Gal LP Tanks (2 Stand-up)
Dual Battery Compartment w/ Slideout Tray
Diamond Plate Armor - Basement Siding
Roof Access Ladder
7" Tall Roof Rack
Rear Exterior "Marine" Speakers
3 Burner Hi-Output Range w/ 22" Oven (most models)
Microwave

Aluminum Superstructure



Bedroom

Pillow Top, Inner Spring Mattress
Optional 19" - 12 Volt LCD TV
w/ Swing Arm
Amplified TV Antenna Hookup
Park Cable Connection
12 Volt Outlet
Large Wardrobe Cabinet
Cabover Hampers w/ Struts
Swivel Accent Reading Lights
Mirrored Closet Doors
Padded Headboard
Full Wall Wardrobe Option
Optional Front Window w/ Storm Window
FANTASTIC © Reversible, Multi-Speed Fan
Coordinated Bedspread & Shams
Front Storage Shelf

Dual Rams

Dual Ram Rack and Pinion
Slide Assembly in All Slide Outs



Dual Battery Rack

Sliding Dual Battery Tray
Holds Two Group 29 Batteries
420 Amp Total Capacity
on Metal Roller Bearings



Dual LPG Tanks

Dual 30# LPG Tanks
w/Auto Change-over
Regulator and Lock-able
Security Strap



10,000 Arctic Fox Campers Built 1999-2012

www.northwoodmfg.com

Arctic Fox

Aluminum SuperStructure

811



Full Wall Slide - Wet Bath

Model Number	811
Dry Weight Lbs.	2873
Dry Weight Kgs.	1303
Exterior Width	96½"
Exterior Height (+A/C)	102"-(112")
Interior Height	79"
Floor Length	9' 0"
Overall Length	16' 8"
Fresh Water	45
Grey Water	41
Black Water	25
LPG Capacity (apx gal)	14



Riviera Dune Interior

10,000 Arctic Fox Campers Built 1999-2012

www.northwoodmfg.com

Aluminum Superstructure & Solid Core Blocking

Aluminum Superstructure with Solid Core Anchor Blocking

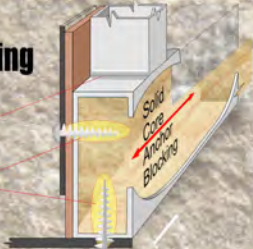
Anchor blocking gives substantial strength at main connection points.



Solid Core Anchor Blocking

CONTINUOUS BEAD WELDS

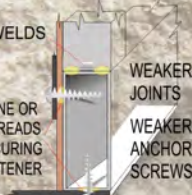
ALL THREADS ARE SECURING THE FASTENER



other brands

SPOT WELDS

ONLY ONE OR TWO THREADS ARE SECURING THE FASTENER



Absolute Northwood

"Where Quality is Everyone's Responsibility"



Structural Aluminum Basement Floor Frame

'Big' holding tanks require a 'Big' floor structure...

That's the Arctic Fox Basement Floor!

Thick wall aluminum basement floor joists

support our holding tanks under the basement of every Arctic Fox Truck Camper.



Our Guarantee of Quality Strength Durability



Full Walk On Roof - 31 Employees On Board!



When Northwood advertises a "Full Walk-On Roof" for our slide out truck campers, you not only can walk everywhere on the roof, but you could also invite a couple dozen of your friends to join you! We tested the strength of our 992 full-wall slide model by loading the roof with 31 of our camper line employees (a good testimonial for our camper jacks too!).

Solid Wood Cabinetry 4 Season All Weather Camper

...that is mounted to the Walls and the Ceiling



By using solid wood face frame construction and then integrating the cabinet with the structure of the ceiling and walls, our coaches and our cabinets are both made stronger.

Heated Holding Tank Area

Our fully enclosed, insulated and heated holding tank area circulates air around the suspended tanks providing the best protection from freezing. All our dump valves are also enclosed and heated to ensure smooth operation, even in cold northern climates.



10,000 Arctic Fox Campers Built 1999-2012

www.northwoodmfg.com

Arctic Fox

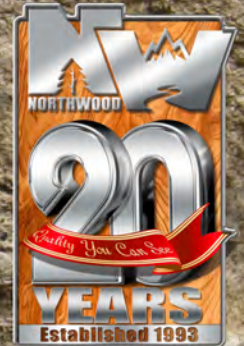
Aluminum SuperStructure

990



Full Wall Slide - Wet Bath

Model Number	990
Dry Weight Lbs.	3010
Dry Weight Kgs.	1365
Exterior Width	96½"
Exterior Height (+A/C)	102"-(112")
Interior Height	79"
Floor Length	9' 10"
Overall Length	17' 6"
Fresh Water	55
Grey Water	44
Black Water	43
LPG Capacity (apx gal)	14



Fox Talk




"The Fox has been our Home for the last three months in all kinds of weather and all kinds of roads and has performed magnificently."

John & Linda Ross, 990 owners



Hey Mick,

Just wanted to let you know that I just returned from a one month shakedown of my new Arctic Fox. I put it through its paces going to Big Bend N.P., Big Bend Ranch State Park and Guadalupe N.P., all in Texas. Big Bend Ranch State Park involved about 35 miles of dirt and 4-wheel drive roads, camped in 70 mph winds in Big Bend, and got into below freezing weather at Guadalupe N.P. The camper exceeded my expectations and everything worked fine. I'm very pleased.

Your friend in Chattanooga,
Pete



I was going right by the Northwood plant on my way from Nevada and I think it's awesome that you can fit people in on short notice, and for me, that's what customer service is all about. After doing a lot of research on the web, a very good friend of mine introduced me to his best friend who just bought an Arctic Fox 990. He raved about how great his Arctic Fox was.

Terry Burke Kelowna, BC - 990 owner.

A True Story: "Ask the rep from any other camper manufacturer how many nights he has spent in one of his company's truck campers, and odds are, he hasn't spent any..."

Doug's story: "I travel a lot for Northwood, which I really enjoy, but flying on airplanes, sleeping in hotels and eating in restaurants was getting old. One day a few years back, I had just returned home from a particularly rough sales trip and was sharing the details with my wife, retracing the flight delays, the lousy restaurant food, the noisy hotels, and when I finished the story she asked me, 'why don't you stay in one of your truck campers?' The more I considered her suggestion, the better it sounded.

Over the past 2 years I have spent 182 nights in an Arctic Fox Truck camper. I started with a 990 and switched it a year ago for a 992. It's amazing what you will discover by living in your own product. It's the little things you discover. As a result of my 'campouts', we've added a bigger dinette window, the dream dinette, a light in the dump valve area, clear glass in the rear entry door and many more improvements.

Of course cooking my own food, having my own bed and shower in addition to meeting new people in the campgrounds is all preferable for me too.

I've spent nights in the Arctic Fox when it was 8 degrees and days when it was 115 degrees and indoors you'd never know the difference except the A/C was running or the heater was on. The climate control in the Arctic Fox even amazed me and I have been selling these since they first were created in 1999.

The only draw back to traveling in the Arctic Fox is when I pull into a campground and the jacks go down, the slide goes out, I extend the awning and hook up the barbeque, I always end up putting on my tour guide hat and going back to work. You see, no one in the campground believes all these features come in a truck camper. People are always very impressed because the Arctic Fox is a very impressive product."

Doug Karr "The Camper Guy"



10,000 Arctic Fox Campers Built 1999-2012

www.northwoodmfg.com

Arctic Fox

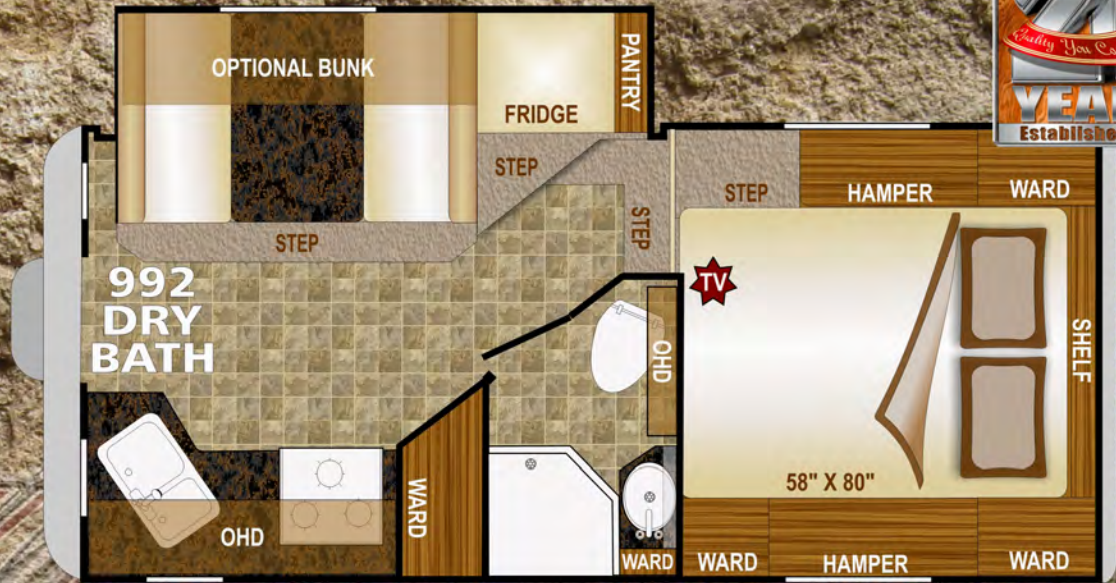
Aluminum SuperStructure

992



Full Wall Slide - Dry Bath

Model Number	992
Dry Weight Lbs.	3235
Dry Weight Kgs.	1467
Exterior Width	96½"
Exterior Height (+A/C)	102"-(112")
Interior Height	79"
Floor Length	10' 2"
Overall Length	17' 10"
Fresh Water	47
Grey Water	29
Black Water	37
LPG Capacity (apx gal)	14



Crystal Onyx Interior



10,000 Arctic Fox Campers Built 1999-2012

www.northwoodmfg.com

31 EMPLOYEES ON THE ROOF OF A 992 ARCTIC FOX - JULY 8, 2011

When Northwood advertises a "Full Walk-On Roof" for our slide out truck campers, you not only can walk everywhere on the roof, but you could invite a couple dozen of your friends to join you!!

We tested the strength of our AF 992 full-wall slide model by loading the roof with 31 of our camper line employees.

(A good testimonial for our camper jacks, too!).



Now that's an **ABSOLUTE** FULL walk-on roof!

SEE THE VIDEO



Arctic Fox Truck Camper:31 on the Roof

10,000 Arctic Fox Campers Built 1999-2012

www.northwoodmfg.com

"The Ultimate Back Porch"

FOX LANDING

Manufactured *Exclusively* for NORTHWOOD Mfg.



The new **FOX LANDING** offers a large entry platform, convenient fold away stairs and an intermediate step for easy access. The stairway can be installed to the left or right of the landing and the platform folds up out of the way for travel or when hitching your boat or trailer. Check it out!

- * 4 Equal Height Steps
- * Mid Step (Between Bumper & Threshold)
- * New Wider Bumper
- * Left or Right Hand Accessible
- * Steps Fold Up in Seconds
- * Single Pin Locks Into Position
- * ...Found Exclusively in Arctic Fox !!!



1. Steps in the down position.



2. Treads fold up....



3. Landing folds up, and pin locks it into place

More Popular Options To Consider



With the Overhead Bunk option in the dinette, you can add an extra sleeping area for a child. The bunk quickly and conveniently folds up and away against the ceiling of the slideout when not in use. You may also want to consider adding a Full Wall Wardrobe in the bedroom or a Roll-Over Lounge instead of the standard dinette. (Available in most models).



CAMPER SAFETY TIPS: For your safety while driving, use mirrors that allow you to view past the camper to the rear on both sides. Trucks can be purchased with extended mirror options or you may purchase mirror extensions. Truck manufacturers state that you should not exceed the GVWR for the vehicle that carries your camper. The configuration of your truck will determine what size camper your vehicle can carry. A dual rear wheel truck is advisable for Arctic Fox campers. Adjustable air bags will help to level your vehicle transfer rear axle weight forward for comfort and safety and are recommended for all Arctic Fox applications. Some states allow passengers to ride in the camper, but it is not recommended as there are no seat belts available. When driving in any adverse weather condition it is always best to reduce your speed. The pickup should be outfitted with a durable rubber mat liner to reduce shifting while traveling. The mat will also protect the truck bed and camper from scratching while loading and unloading.

Use  **TORKLIFT** frame mounted camper tie downs for greatest safety.

10,000 Arctic Fox Campers Built 1999-2012

www.northwoodmfg.com

Arctic Fox

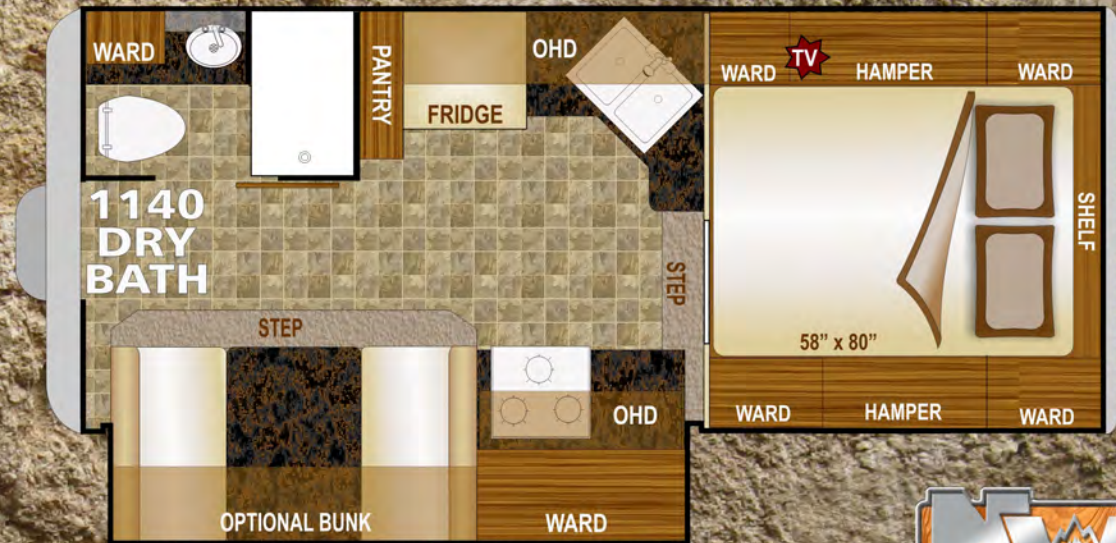
Aluminum SuperStructure

1140



Full Wall Slide - Dry Bath

Model Number	1140
Dry Weight Lbs.	3465
Dry Weight Kgs.	1571
Exterior Width	96½"
Exterior Height (+A/C)	102"-(112")
Interior Height	79"
Floor Length	11' 4"
Overall Length	19'
Fresh Water	55
Grey Water	44
Black Water	43
LPG Capacity (apx gal)	14



**Typical
Dry Bath**

Rivera Dune Interior

10,000 Arctic Fox Campers Built 1999-2012

www.northwoodmfg.com

Arctic Fox

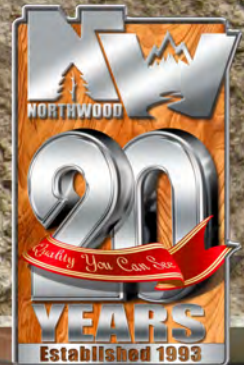
Aluminum SuperStructure

1140



Full Wall Slide - Wet Bath

Model Number	1140
Dry Weight Lbs.	3465
Dry Weight Kgs.	1571
Exterior Width	96½"
Exterior Height (+A/C)	102"-(112")
Interior Height	79"
Floor Length	11' 4"
Overall Length	19'
Fresh Water	55
Grey Water	44
Black Water	43
LPG Capacity (apx gal)	14



Typical
Wet Bath



Arctic Fox

Aluminum SuperStructure

1150

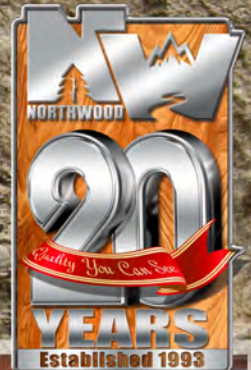


Full Wall Slide - Dry Bath

Model Number	1150
Dry Weight Lbs.	3358
Dry Weight Kgs.	1523
Exterior Width	96½"
Exterior Height (+A/C)	102"-(112")
Interior Height	79"
Floor Length	11' 4"
Overall Length	19'
Fresh Water	55
Grey Water	44
Black Water	43
LPG Capacity (apx gal)	14



EXTERIOR STORAGE ACCESS



Shimmering Sands Interior

10,000 Arctic Fox Campers Built 1999-2012

www.northwoodmfg.com

Arctic Fox

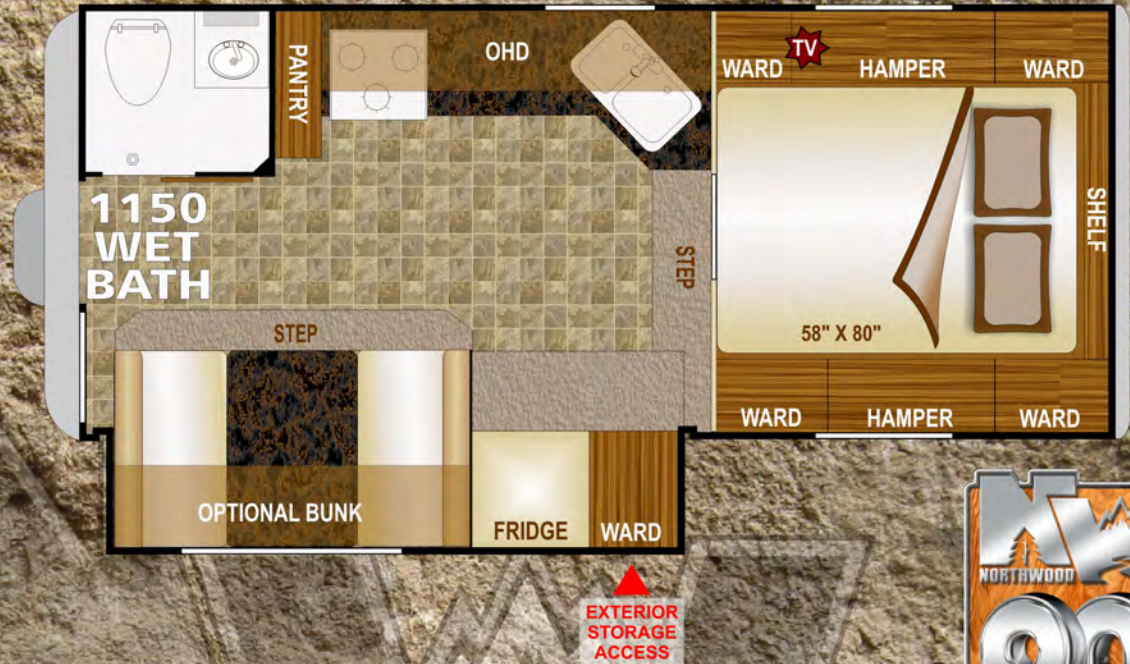
Aluminum SuperStructure

1150



Full Wall Slide - Wet Bath

Model Number	1150
Dry Weight Lbs.	3358
Dry Weight Kgs.	1523
Exterior Width	96½"
Exterior Height (+A/C)	102"-(112")
Interior Height	79"
Floor Length	11' 4"
Overall Length	19'
Fresh Water	55
Grey Water	44
Black Water	43
LPG Capacity (apx gal)	14



Shimmering Sands Interior

10,000 Arctic Fox Campers Built 1999-2012

www.northwoodmfg.com

Arctic Fox

Features & Options

	811	990	992	1140	1150
FOX VALUE PACK CONSTRUCTION	0	0	0	0	0
Thermal Pane Windows	0	0	0	0	0
Storm Windows	0	0	0	0	0
Front Cab-Over Window	0	0	0	0	0
ELECTRICAL	811	990	992	1140	1150
60 Watt Solar Panel w/ Controller	0	0	0	0	0
95 Watt Solar Panel w/ Controller	0	0	0	0	0
Combo Satellite Dish	0	0	0	0	0
Auto Scan Satellite Dish	0	0	0	0	0
2.5 Onan Generator (Short Box Only 865 / 811)	0	0	0	0	0
11K BTU Air Conditioner	0	0	0	0	0
KITCHEN / GALLEY	811	990	992	1140	1150
2-way Double Door 6 Cu. Ft Fridge	0	0	0	0	0
2-way Double Door 8 Cu. Ft Fridge	N	N	N	N	N
3 Burner Range with 22" Oven	0	0	0	N	0
3 Burner Range with 16" Oven	N	N	N	S	N
PLUMBING & LAVY	811	990	992	1140	1150
DSI Gas Electric Water Heater	S	S	S	S	S
INTERIOR	811	990	992	1140	1150
LCD Flat Screen TV	0	0	0	0	0
DVD Player	0	0	0	0	0
Overhead Bunk in Dinette	0	0	0	0	0
Full Wall Wardrobe	0	0	0	0	0
Removable Livingroom Carpet	0	0	N	0	0
EXTERIOR	811	990	992	1140	1150
Diamond Plate Front Panel	0	0	0	0	0
Side Box Awning	0	0	0	0	0
Full Wall Slide Out Awnings	0	0	0	0	0
Swing Out Brackets For Dually	0	0	S	S	
Add-a-Step	0	0	0	0	0
LP Barbeque	0	0	0	0	0
Remote Power Jacks	0	0	0	0	0
Rear Power Awning (upgrade)	0	0	0	0	0



KEY:

- Standard Equipment (no charge)
- Option Available on Request
- Not Available in this Model

Full 12 Month Warranty (All Models)

Value Pack

Fox Value Pack is a mandatory option bundle that includes all of the following high value features:

Rear Awning
Sliding Battery Tray
2500 # Capacity Electric Jacks
Dual 30 lb. LP Tanks
Exterior "Marine Speakers"
Roof Rack and Ladder
Rear Sliding Storage Tray
Diamond Plate Armor- Basement Siding
Large 22" Oven
Microwave Oven
LP/110 - 6 Cu Ft Dbl Door Refrigerator
Pull-Out Pantry
Deluxe Refrigerator Doors
Fantastic Fan© - Multi-Speed/Reversible
TV Antenna
Dinette Storage Door
Dinette Storage Drawer
Bedsread/Shams
Bedroom Front Shelf

Weight: 595 lbs.

Option Weights

Approximate weight of specific additional features:

Feature	Est. Weight	
	Lbs.	Kgs.
OHD Bunk	40	18
Swing Out Brackets	21	10
11M BTU Air Cond.	90	41
Solar Panel 50W	22	10
Solar Panel 95W	32	15
Removable Carpet	10	5
Side Box Awning	63	29
Generator Ready	25	11
2.5 Generator	78	35
Barbeque	22	10
One Battery	30	14
Typical Water Full (8.3 Lb/Gal)	458	208
Propane Full	60	27
Bumper	49	23
Fox Landing	24	11
TV w/Bracket	20	9
12V Power Awning (Unit)	5	3

Use these figures to estimate the total weight of the coach with added options:
Camper Weight + All Options

Items Included In Unit Weight Estimation

All Unit Weights Include All of The Following Features Below:

Fiberglass Exterior; Heavy-Duty Camper Tie Downs; Exterior Rinse Station; 20 K BTU Auto Ignition Furnace with Thermostat Control; 58"x 80" Pillow Top Inner Spring Mattress; Pre-wire for Solar and Satellite; Pre-wire for TV antenna; Pre-wire for microwave oven; Pre-wire for Air Conditioner; Large 3-burner Range; Range Cover; Range Hood w/ Light and Exhaust Fan; DSI Gas Electric Water Heater with Insulated Porcelain Tank; Water Heater By-pass Valve; Semi-Automatic Winterization System; Night/Privacy Shades; Galley Skylight w/Shade; 25 Watt Speakers; Fire Extinguisher; LPG Leak, Smoke and CO Detectors.

***All dry weights are calculated before adding options.** Verify the load capacity of your vehicle. If you don't know or aren't sure, you should ask your automotive dealership or contact your vehicle manufacturer. All weights above are average approximations and may vary. Specifications are subject to change without notice.

Approximate Overall Weight and Measure Specifications For Arctic Fox Campers

Description	Arctic Fox Truck Campers				
	811	990	992	1140	1150
Model Number					
Dry Weight Lbs.	2873	3010	3235	3465	3358
Dry Weight Kgs.	1303	1365	1467	1571	1523
Width	96½"	96½"	96½"	96½"	96½"
Exterior Height	102"-112"w/AC	102"-112"w/AC	102"-112"w/AC	102"-112"w/AC	102"-112"w/AC
Interior Height	79"	79"	79"	79"	79"
Floor Length	9' 0"	9' 10"	10' 2"	11' 4"	11' 4"
Overall Length	16' 8"	17' 6"	17' 10"	19'	19'
Fresh Water w/Water Heater	45	55	47	55	55
Grey Water	41	44	29	44	44
Black Water	25	43	37	43	43
LPG Capacity (approx. gallons)	14	14	14	14	14

Weights include slide-out (if applicable). Some options are not included in the weights displayed. See the list of features that are included in the calculation table.

Your Northwood Dealer



Printed August 2012