

2013



Quality. Innovation. Integrity.



REWRITING THE RULES OF LUXURY.

LIFESTYLE



LS36FW • CAPE TOWN DECOR • SANDALWOOD CORIAN® • GLAZED MEDALLION CHERRY WOOD • FERRARI CREAM FURNITURE • MCD SHADES (OPTIONAL)

## A NEW DAY FOR LUXURY LIVING.

Meet the all-new 2013 lineup from Lifestyle Luxury RV. Born from strong experience in the luxury fifth wheel segment, these premium models are designed for year-round living comfort. With your first impression, you'll marvel at the spacious living area, beautiful cabinetry and plush furnishings. And as we become more acquainted, you'll be impressed by the high-quality construction details that add up to a better living experience. So, if you're looking for a fresh approach to the rich resort lifestyle, we encourage you to get to know us better. We're certain this will be a lasting friendship.



LS36FW • 40" SAMSUNG LED TV • PULL-OUT DESK WITH OPTIONAL FIREPLACE



LS371K • BOULEVARD DECOR • GLAZED BROOK CHERRY WOOD • KITCHEN ISLAND WITH DOUBLE STAINLESS STEEL SINK



ENTRYWAY COAT RACK AND MIRROR



LS36FW • CAPE TOWN DECOR • GLAZED MEDALLION CHERRY WOOD • HPL WOOD FLOORING (OPTIONAL)

## SAVOR THE FREEDOM.

Lifestyle Luxury RV fifth wheels are all about giving you the freedom to get the most out of your resort experience. Our designers have created remarkable interiors, with stylish kitchen islands (*standard on LS37IK, optional on several floorplans*), gracious dining areas and truly impressive storage space. Cabinet drawers feature heavy duty full-extension guides with soft-close technology. Whichever floorplan you choose, you'll enjoy Corian countertops, a double stainless-steel sink and top-of-the-line appliances. Lifestyle fifth wheels also feature large entertainment centers with a pull-out desk and optional fireplace.



KITCHEN PANTRY DRAWERS WITH SOFT-CLOSE TECHNOLOGY



LS37IK • BOULEVARD DECOR • GLAZED BROOK CHERRY WOOD • LUXURY HIDE-A-BED SOFA • FIREPLACE (OPTIONAL)



LS371K • GLAZED BROOK CHERRY WOOD • KITCHEN ISLAND WITH PENDANT LIGHTING



KITCHEN PANTRY AND WARDROBE



FREESTANDING DINETTE TABLE WITH HIDDEN LEAF  
TWO DINETTE CHAIRS WITH STORAGE



LS371K • BOULEVARD DECOR • BEDROOM WARDROBE WITH WASHER/DRYER PREP

## A PLACE FOR EVERYTHING.

They say home is where you hang your hat, and in a Lifestyle, you have room to hang, stack and neatly tuck away everything you need. From the large mirrored wardrobe with storage shelves to the drawers and overhead cabinets, Lifestyle makes organization a breeze.



LS36FW • BEDROOM WARDROBE WITH SHELVES



LS371K • DOUBLE LINEN CLOSET • 26" LCD TV (OPTIONAL)



LS371K • BOULEVARD DECOR • QUEEN BED WITH PILLOW TOP AND RESIDENTIAL HEADBOARD



LS36FW • CAPE TOWN DECOR • MCD SHADES (OPTIONAL) • ULTRADECK MATTRESS FOUNDATION WITH STORAGE UNDERNEATH

## YOUR PRIVATE RETREAT.

Begin and end each day in the Lifestyle bedroom, featuring a full-height ceiling, a queen or optional king bed (*on most floorplans*) and beautifully complementing fabrics and window treatments. Large windows allow you to fully enjoy the view, while standard night shades or optional MCD shades (*shown*) provide complete privacy. Add an optional flat-screen TV to complete your personal oasis.



GLAZED MEDALLION CHERRY WOOD - RAVINE CORIAN COUNTERTOP WITH UNDERMOUNT SINK



RAVINE CORIAN COUNTERTOP WITH UNDERMOUNT SINK

## WHERE BIGGER IS BETTER.

Lifestyle luxury fifth wheels lead the industry in spacious comfort, and the bathroom is no exception. The enormous residential-size shower (*LS37IK*) is 32" deep and has room for all your essentials. The vanity is brightly lit and features a large medicine cabinet, undersink storage and easy-to-clean Corian countertop.





L5371K • RESIDENTIAL SHOWER • REMOVABLE HANDHELD BRUSHED NICKEL SHOWER HEAD



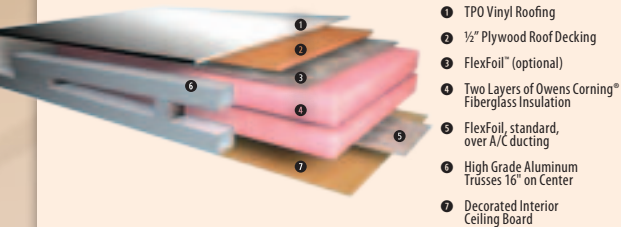
HALLWAY DOUBLE WARDROBE WITH WASHER/DRYER PREP

## SUPERIOR INSULATION

- Multi-layer wall, floor and ceiling design •
- Whole-house climate control •
- Superior moisture resistance •

### ROOF CONSTRUCTION

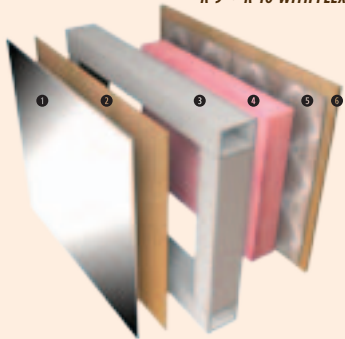
R-23 • R-37 WITH FLEXFOIL



- 1 TPO Vinyl Roofing
- 2 1/2" Plywood Roof Decking
- 3 FlexFoil™ (optional)
- 4 Two Layers of Owens Corning® Fiberglass Insulation
- 5 FlexFoil, standard, over A/C ducting
- 6 High Grade Aluminum Trusses 16" on Center
- 7 Decorated Interior Ceiling Board

### WALL CONSTRUCTION

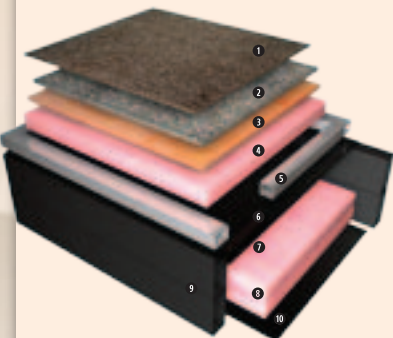
R-9 • R-16 WITH FLEXFOIL



- 1 Gel-Coat Fiberglass
- 2 Luan Backer
- 3 High Grade Aluminum Frame, 16" on Center
- 4 Owens Corning Fiberglass Insulation
- 5 FlexFoil™ (optional)
- 6 Decorated Interior Wall Board

### FLOOR CONSTRUCTION

R-37



- 1 Carpet/Linoleum
- 2 Rebond Carpet Pad
- 3 5/8" Tongue and Groove Plywood
- 4 Owens Corning Fiberglass Insulation
- 5 High Grade Aluminum Floor, 16" on Center
- 6 First Polyflex Vapor Barrier
- 7 12" of Insulated Air Space
- 8 Second and Third Layers of Fiberglass Insulation
- 9 12" Double Stacked Box Tube Steel Frame
- 10 Second Polyflex Vapor Barrier

### SLIDEOUT R-VALUES

WALL R-9 • R-16 WITH FLEXFOIL  
ROOF AND FLOOR R-9 • R-23 WITH FLEXFOIL

## BUILDING LUXURY FROM THE FRAME UP.

At Lifestyle, we understand that luxury living all starts with the highest quality design and construction. That's why we're passionate about the little things. Things that most manufacturers wouldn't want you to see, but things we're proud of — like our double-stacked box steel tube frame that's built in-house, our steel integrated bath floor, and our fully insulated slideout floors. They're details that might seem picky to most people, but we know you're not "most people." Every time we go the extra mile to do things the right way, we're building a fifth wheel just for you.



**AWNINGS** Lifestyle fifth wheels come standard with a top-quality Carefree electric adjustable pitch awning for years of reliability (shown with optional awning on slideout).



**STORAGE** With a Lifestyle fifth wheel you can "take it all," thanks to industry leading storage space, featuring two large pass-through storage areas with heavy duty slam latches.



Main pass-through



Rear pass-through with 4' wide rear access



You can count on years of superior performance from the industry-leading MOR/ryde suspension and pin box.



**LEVELING SYSTEM** Lifestyle is proud to offer the reliability and convenience of the Bigfoot leveling system with fully automatic leveling. This hands-off system does all the work for you, automatically leveling the RV and even remembering original hitch height. For an easy, stress-free departure, use the Bigfoot "Quick Connect" wireless remote-control key fob.





We know we build the best RV designed for full-time use, and we back it up with a genuine, peace-of-mind 2x5 warranty in writing. Lifestyle's 2 year limited warranty is a manufacturer's warranty. Each product is warranted to the original purchaser for a period of 24 months from the original date of purchase against defects in materials and workmanship. Lifestyle also offers a limited 5 year structural warranty. Review your coach's limited warranty in full for complete terms and conditions.

**CLIMATE CONTROL** You can count on quiet, efficient, year-round comfort with the Quiet Performa-Cool system which features a 15,000 BTU A/C with standard heat pump, and a powerful 40,000 BTU furnace.

**SLIDEOUT** Lifestyle fifth wheels feature the industry's most reliable slideout construction and innovative full-wall slide technology. Built above the subfloor and below the main floor, our slideouts offer superior structural integrity. The slideout operates on a rack and pinion mechanism and features a self cleaning roof system, thanks to an H-seal enclosure wiper and wedge system. And, unlike most manufacturers' slideouts, ours have 2¼" fully insulated floors.



**TOWING/HITCH** For towing safety and convenience, Lifestyle offers an optional 2" hitch/receiver that is integrated into the frame with standard skid bars. It is tested and rated for 350 lbs. of tongue weight and 2,500 lbs. of towing capacity.

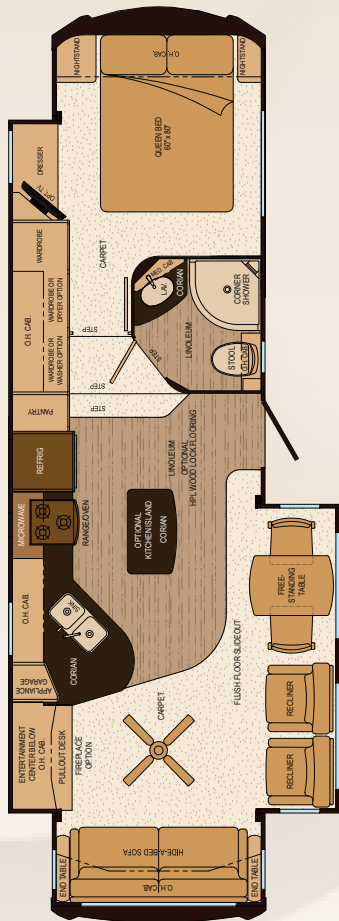
**HEAVY DUTY SLAM LATCHES** Lifestyle exterior storage bays are equipped with heavy duty slam latch doors to give you easier access to your stowed items.

**GOODYEAR® TIRES** Peace of mind on the road is provided by heavy duty ½" greaseable shackles and Goodyear G-range tires.

**LUXURY LIVING STARTS WITH LUXURY ENGINEERING.** At Lifestyle, we believe that by building our frame in-house, we have better control over its quality and seamless integration with the entire fifth wheel. The double stacked box steel tube frame is designed to offer superior strength and durability. It provides for a dual floor basement and for hung walls with aluminum OC-16 cage construction — all to give you the best-performing luxury fifth wheel you'll find anywhere.

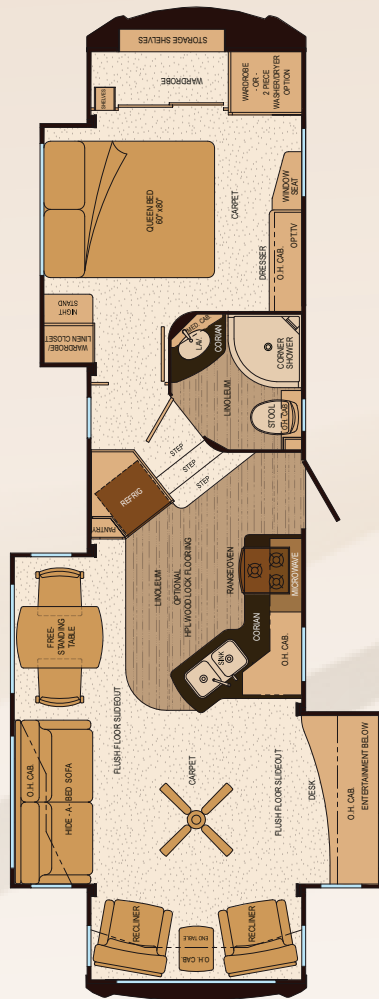


# LIFESTYLE FLOORPLANS



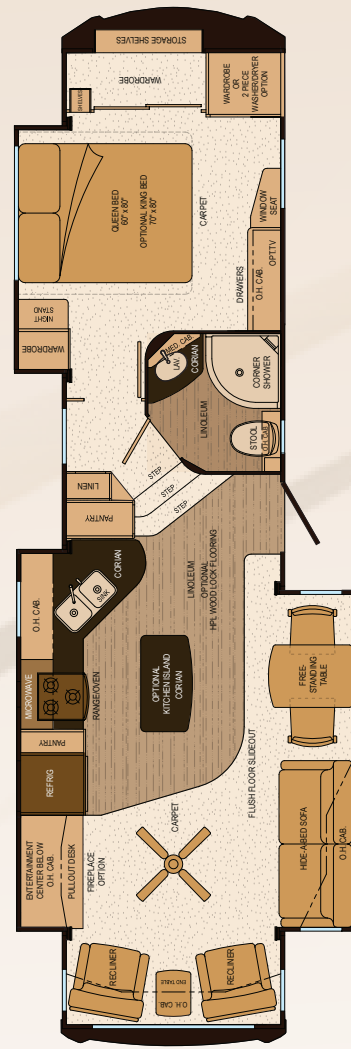
## LS32FW

Approx. Exterior Length <sup>1</sup>	34' 4"
Approx. Exterior Width	96"
Approx. Exterior Height with standard A/C <sup>2</sup>	13' 0"
Approx. Axle Weight (lb) <sup>3</sup>	9,780 <sup>3</sup>
Approx. Hitch Weight (lb) <sup>3</sup>	2,635 <sup>3</sup>
Approx. Unloaded Vehicle Weight (lb) <sup>3</sup>	12,415 <sup>3</sup>
Approx. Net Carry Capacity (lb) <sup>3</sup>	4,220 <sup>3</sup>
Axles (number of)	2
Fresh Water Capacity with Water Heater (gal) <sup>4</sup>	84
Black/Gray Holding Tank Capacity (gal)	38/72



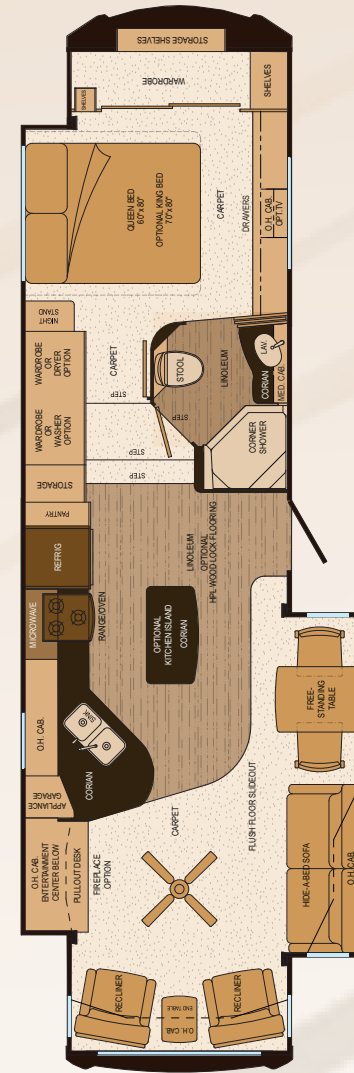
## LS349B

Approx. Exterior Length <sup>1</sup>	36' 3"
Approx. Exterior Width	96"
Approx. Exterior Height with standard A/C	13' 0"
Approx. Axle Weight (lb) <sup>3</sup>	10,190
Approx. Hitch Weight (lb) <sup>3</sup>	2,365
Approx. Unloaded Vehicle Weight (lb) <sup>3</sup>	12,555
Approx. Net Carry Capacity (lb) <sup>3</sup>	3,810
Axles (number of)	2
Fresh Water Capacity with Water Heater (gal) <sup>4</sup>	84
Black/Gray Holding Tank Capacity (gal)	38/72



## LS355B

Approx. Exterior Length <sup>1</sup>	37' 3"
Approx. Exterior Width	96"
Approx. Exterior Height with standard A/C	13' 0"
Approx. Axle Weight (lb) <sup>3</sup>	10,375 <sup>3</sup>
Approx. Hitch Weight (lb) <sup>3</sup>	2,610 <sup>3</sup>
Approx. Unloaded Vehicle Weight (lb) <sup>3</sup>	12,985 <sup>3</sup>
Approx. Net Carry Capacity (lb) <sup>3</sup>	3,625 <sup>3</sup>
Axles (number of)	2
Fresh Water Capacity with Water Heater (gal) <sup>4</sup>	84
Black/Gray Holding Tank Capacity (gal)	38/72

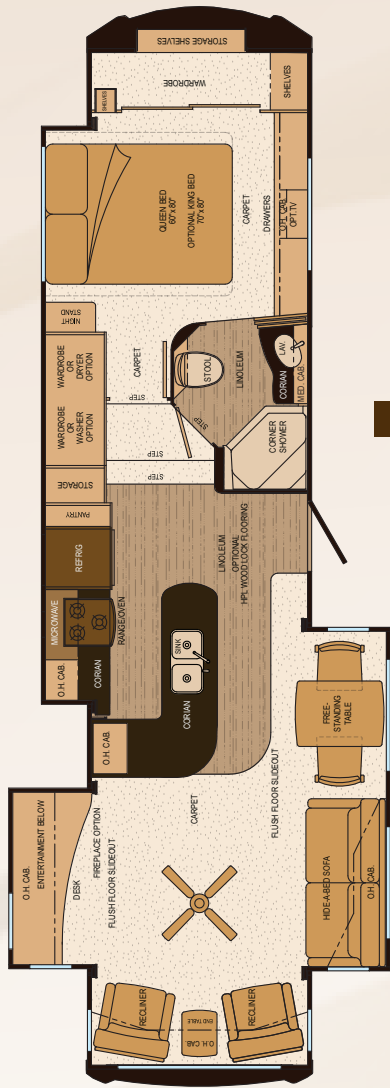


## LS36FW

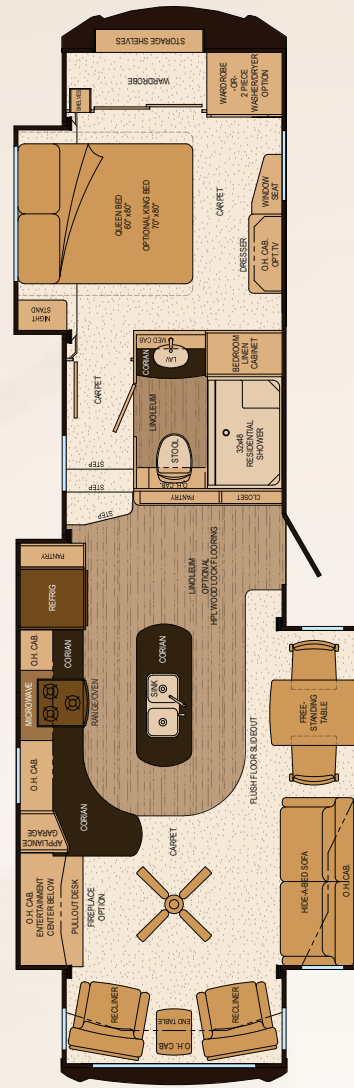
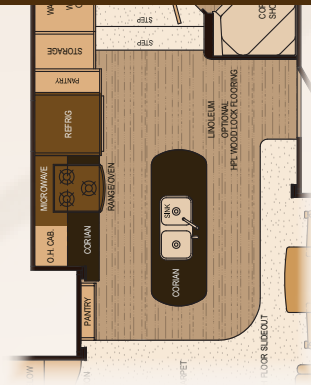
Approx. Exterior Length <sup>1</sup>	37' 11"
Approx. Exterior Width	96"
Approx. Exterior Height with standard A/C <sup>2</sup>	13' 0"
Approx. Axle Weight (lb) <sup>3</sup>	10,645
Approx. Hitch Weight (lb) <sup>3</sup>	2,945
Approx. Unloaded Vehicle Weight (lb) <sup>3</sup>	13,590
Approx. Net Carry Capacity (lb) <sup>3</sup>	3,355
Axles (number of)	2
Fresh Water Capacity with Water Heater (gal) <sup>4</sup>	84
Black/Gray Holding Tank Capacity (gal)	38/72

<sup>6</sup> Estimated weight calculations.

1. Length does not include rear ladder. 2. Add 3" to overall height for optional 2nd A/C where applicable. 3. Above listed weights are actual units that include all popular options on most units. These weights are provided only as a guideline. Refer to the owner's packet for each individual unit for the actual weights. All units weighed as they come off the production line. 4. Fresh water capacity includes the combined capacity of the fresh water tank and the water heater.

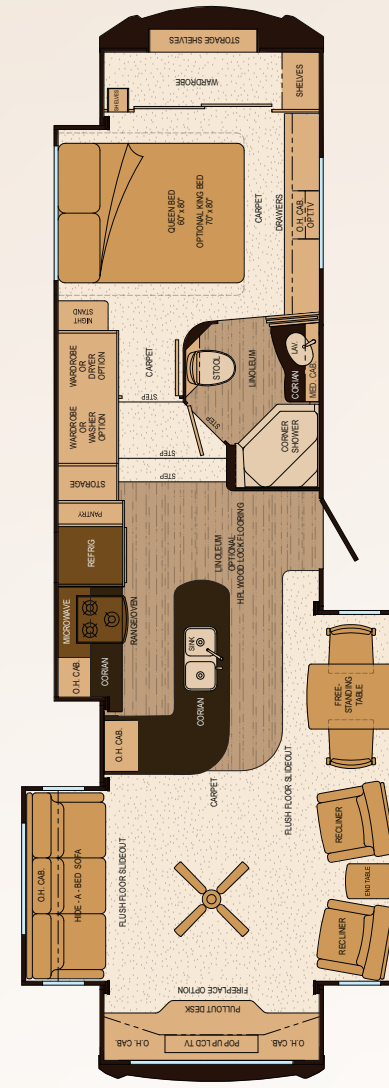


LS37CKSL OPTIONAL ISLAND KITCHEN

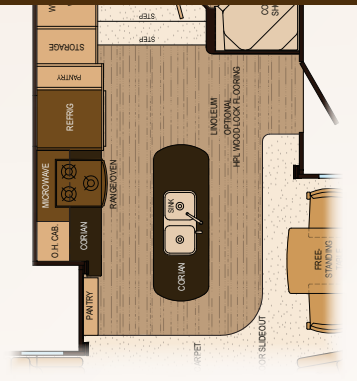


LS37IK

Approx. Exterior Length <sup>1</sup>	38' 5"
Approx. Exterior Width	96"
Approx. Exterior Height with standard A/C <sup>2</sup>	13' 0"
Approx. Axle Weight (lb) <sup>3</sup>	10,825
Approx. Hitch Weight (lb) <sup>3</sup>	2,620
Approx. Unloaded Vehicle Weight (lb) <sup>3</sup>	13,445
Approx. Net Carry Capacity (lb) <sup>3</sup>	3,175
Axles (number of)	2
Fresh Water Capacity with Water Heater (gal) <sup>4</sup>	84
Black/Gray Holding Tank Capacity (gal)	38/72



LS37RESL OPTIONAL ISLAND KITCHEN



LS37RESL

Approx. Exterior Length <sup>1</sup>	38' 5"
Approx. Exterior Width	96"
Approx. Exterior Height with standard A/C <sup>2</sup>	13' 0"
Approx. Axle Weight (lb) <sup>3</sup>	11,005
Approx. Hitch Weight (lb) <sup>3</sup>	2,890
Approx. Unloaded Vehicle Weight (lb) <sup>3</sup>	13,895
Approx. Net Carry Capacity (lb) <sup>3</sup>	2,995
Axles (number of)	2
Fresh Water Capacity with Water Heater (gal) <sup>4</sup>	84
Black/Gray Holding Tank Capacity (gal)	38/72

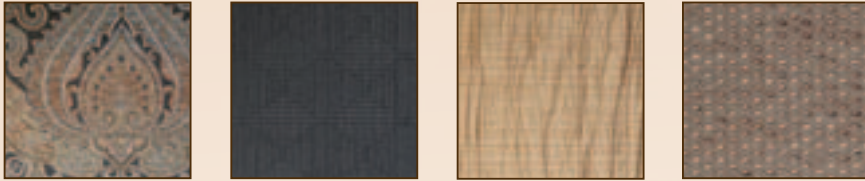
LS37CKSL

Approx. Exterior Length <sup>1</sup>	38' 5"
Approx. Exterior Width	96"
Approx. Exterior Height with standard A/C <sup>2</sup>	13' 0"
Approx. Axle Weight (lb) <sup>3</sup>	10,900
Approx. Hitch Weight (lb) <sup>3</sup>	2,925
Approx. Unloaded Vehicle Weight (lb) <sup>3</sup>	13,825
Approx. Net Carry Capacity (lb) <sup>3</sup>	3,100
Axles (number of)	2
Fresh Water Capacity with Water Heater (gal) <sup>4</sup>	84
Black/Gray Holding Tank Capacity (gal)	38/72

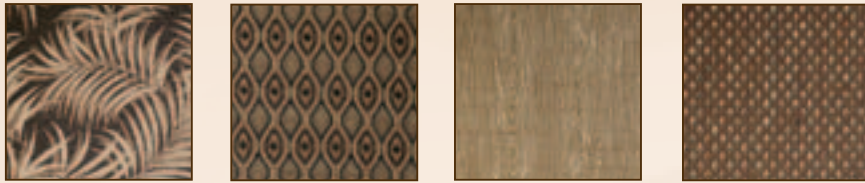
# LIFESTYLE DECOR GUIDE

## FABRICS

### BOULEVARD



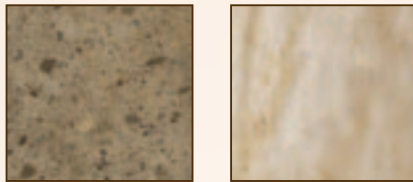
### CAPE TOWN



### CHIC



## CORIAN



Ravine

Sandalwood

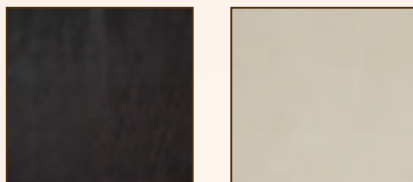
## WOOD



Glazed Brook Cherry

Glazed Medallion Cherry

## SOFA, RECLINER, HEADBOARD



Ablene Walnut

Ferrari Cream

## FLOORING



BeauFlor®

Carpet

HPL Dark (optional)

HPL Light (optional)



STANDARD EXTERIOR



FULL BODY PAINT EXTERIOR - UMBER EFFECT

For 2013, our interior designers have created stylish, contemporary decors to perfectly complement your choice of solid cherry cabinets, Corian countertops, and residential flooring. Put it all together to create the luxury fifth wheel of your dreams.

STANDARD PACKAGES

**QUADRA BIGFOOT PACKAGE**

Four Individual Jacks and Cylinders  
Fully Automatic Controls with Key Fob  
17,000 lb Capacity on each Front Jack  
12,000 lb Capacity on each Rear Jack  
One Pump/Motor and Reservoir per Cylinder  
Solid Steel Rams and Steel Cylinders  
10"x10" Foot Pads  
Lifetime Cylinder Warranty

**LIFESTYLE PACKAGE**

40" Samsung LED HD TV  
Samsung FM/CD/DVD 5.1 Home Theatre System with Subwoofer  
Corian® Countertops in Kitchen and Bathroom  
40,000 BTU Furnace  
"Quiet Performa-Cool A/C System" with a  
15K BTU High Capacity A/C and Heat Pump  
Frameless Hehr Windows  
Heavy Duty Steel Slam Latches on Baggage Doors  
Residential Owens Corning® Insulation  
Full Extension Ball Bearing Drawer Guides with Soft Close Feature  
Three Zone Halogen Lighting with Dimmer Switches  
Ceiling Fan in Living Room  
Full Height Ceilings in Front Bedroom  
Day-Night Shades in Living Room and Kitchen  
Night Shades in Bedroom  
Hi-Gloss Gel Coat Fiberglass  
Free-Standing Dinette Table with Hidden Leaf  
Dinette Chairs with Storage (2)  
Folding Dinette Chairs (2)  
Ultra Deck Mattress Foundation with  
Gas Struts and Under the Bed Storage  
60" x 80" Queen Bed Pillow-Top Mattress  
2nd Satellite Prep to Bedroom  
Cherry Hardwood Cabinetry  
Hidden Hinges on Cabinets  
Exterior E-Center prep in basement

**LUXURY PACKAGE**

Goodyear® G-Range Tires with 16" Aluminum Wheels  
4-Step Entry  
Heavy Duty 1/2" Greaseable Shackles  
Dexter E-Z Lube® 7,000 lb Axles with 2" Brakes  
MOR/ryde® Rubber Equalizer Suspension System  
LED Exterior Clearance Lights  
Mid-Ship Turn Signals  
H-Seal "Squeegee" Enclosure Wipes  
Rear Exterior Pass-Through Storage  
Carefree Travel'r Electric Adjustable Pitch Vinyl Awning  
TPO Roof with 1/2" Plywood  
50 Amp Service  
Universal Docking Station  
Spare Tire with Crank Up Mount  
Hide-A-Bed Sofa  
Stainless Steel Sink with Deep Bowl  
30" OTR Microwave  
Norcold 8 cu ft Refrigerator  
2nd A/C Prep  
3/8" Tongue & Groove Plywood Flooring  
Washer/Dryer Prep  
Battery Disconnect  
12 Gallon Water Heater

STANDARDS • OPTIONS

**EXTERIOR**

**STANDARD FEATURES**  
Frameless Hehr Windows with Safety  
Glass & GL20 Solar Tinted Glass  
Hung Fiberglass Sidewalls: High-Gloss Gelcoat  
Goodyear® G-Range Tires with  
16" Aluminum Wheels  
4-Step Entry  
Heavy Duty 1/2" Greaseable Shackles  
Dexter E-Z Lube® 7,000 lb Axles  
MOR/ryde® Rubber Equalizer  
Suspension System  
LED Exterior Clearance Lights  
Mid-Ship Turn Signals  
H-Seal "Squeegee" Enclosure Wipes  
TPO Roof with 1/2" Plywood Roof Decking  
Rear Exterior Pass-Through Storage  
Carefree Travel'r Electric Adjustable  
Pitch Vinyl Awning  
Molded Fiberglass Front & Rear  
Caps: High Gloss Gelcoat  
Heavy Duty Steel Slam Latches  
on Baggage Doors  
Amber Patio and Entry Step Lights  
2 Security Lights at Front Corners  
with Separate Interior Switches  
Color Coordinated Fenders and Skirting  
Exterior E-Center: 110V outlet  
with Cable/Antenna prep  
Exterior Compartments are Lined with Felt  
Main Exterior Storage Floor is lined  
with easy to clean Beaufloor®  
Lights in All Exterior Storage Compartments  
One-piece Roof Ladder  
Heavy Duty Leaf Springs  
Heavy Duty Four Wheel Electric Brakes (2" x 12")  
Spare Tire Crank with Extension Arm  
Battery Disconnect  
2nd A/C Prep  
Exterior Door Fold-Away Grab Handle

**OPTIONAL FEATURES**

**Full Body Paint & Clear Coat Finish**  
**Dual Pane Frameless Hehr Windows**  
(Slideout endwall windows open)  
**MOR/ryde® Rubber Pinbox**  
**2nd Carefree Electric Adjustable Pitch**  
**Vinyl Awning (Floorplans Applicable)**  
**Main Awning Upgrade: Acrylic**  
**with Uniguard Cover**  
**2nd Awning & Upgrade: Acrylic with**  
**Uniguard Cover (Floorplan Applicable)**  
**Raise Axles for 4-Wheel Drive Truck**  
**Dexter 8,000 lb. Axles & Disk Brakes**  
**Nev-R-Lube™ Axles**  
**2" Rear Hitch Receiver (Skid Bars are Standard)**  
**Goodyear® H-Range Tires with 17 1/2"**  
**Wheels (Including Spare)**

**SYSTEMS • FANS**

**STANDARD FEATURES**  
Quadra BIGFOOT One-Touch Fully  
Automatic Hydraulic Leveling System  
"Quiet Performa-Cool A/C System" with a 15K  
BTU High Capacity A/C and Heat Pump  
40,000 BTU Furnace  
Fully enclosed, heated, and insulated holding  
tanks with valves and an isolated heat duct  
Full Systems Monitor Panel  
Universal Docking Center: gravity fill,  
water hook-ups, satellite and cable  
connections, two 110V outlets, coil  
sprayer hose, pump switch, and light  
Washer/Dryer Prep  
12 gallon gas/electric DSI water heater  
Two 30 lb. LP tanks with auto change over  
50 amp service with marine power cord  
AC/DC 70 amp power converter  
Front Storage underneath Gooseneck  
with easy access double door

**OPTIONAL FEATURES**

**FlexFoil Thermal Insulation Package**  
**15,000 BTU Bedroom A/C with Heat Pump**  
**Keyless Entry with Key Fob on Entrance Door**  
**3M Water Purifier for the whole house**  
(High Capacity with a 99.99%  
bacteria reduction rate)  
**Fan-Tastic Fan with Wall Switch**  
(Kitchen, Bath, Bedroom)  
**Fan-Tastic Fan with Thermostat and Rain**  
**Sensor (Kitchen, Bath, Bedroom)**  
**Splendide® Combo Washer/Dryer**  
**Splendide® Ariston™ 2 piece Washer/Dryer**  
**Generator Prep with auto-change over**  
**Onan® 5.5 LP Marquis Gold™ Generator**  
**40 lb. LP Tanks**

**CHASSIS • CONSTRUCTION**

**STANDARD FEATURES**  
Double stacked box steel tube frame  
designed and constructed in-house  
Two, 2" x 6" (12" stacked) steel tube chassis  
Steel Integrated Bath Floor  
Heavy Gauge Welded Aluminum  
Superstructure  
5" Aluminum Trussed one-piece  
Roof with 16" Centers or Less  
16" On Center or Less Sidewalls with  
Tubular Aluminum Cage Construction  
3/8" Exterior Grade Tongue and Groove  
Plywood Floor Decking  
1/2" Plywood Roof Decking  
Owens Corning Fiberglass Insulation in Roof,  
Walls, Floor & Caps. (Includes Slideout Floors)  
2 1/4" Fully Insulated Slideout Floors

**LIVING ROOM**

**STANDARD FEATURES**  
Cherry Hardwood Doors, Drawers & Cabinets  
Free-Standing Cherry Hardwood End Table  
Cherry Hardwood Interior Hallway  
Steps with Carpet Runner  
Cherry Hardwood Slideout Fascia  
Full Extension Ball Bearing Drawer  
Guides with Soft Close Feature  
Hidden Hinges on Cabinets  
2 Luxury Recliners  
72" Luxury Hide-A-Bed Sofa with  
Nailhead Trim (80" Sofa on 37RESL)  
Cherry Hardwood Window Trim  
Residential Window Treatments  
Day/Night Shades  
Pull-Out Desk at Entertainment Center  
Three Zone Halogen Lighting  
with Dimmer Switches  
Ceiling Fan in Living Room  
Residential Nylon Carpet with Stain  
Protection and Rebond Carpet Pad  
Hallway Step Light  
Interior Entrance Cherry  
Hardwood Grab Handle

**OPTIONAL FEATURES**

**Dyson Vacuum**  
**Central Vacuum**  
**Fireplace**  
**MCD American Duo® Day-Night Shades**  
**Blackout Shades Throughout**  
**Fabric Recliners**  
**Fabric Sofa**  
**80" Luxury Hide-A-Bed Sofa with Nailhead Trim**  
**in Rear of Living Room (2 Recliners in Slideout**  
**in place of 72" sofa – floorplan applicable)**

**ENTERTAINMENT**

**STANDARD FEATURES**  
40" Samsung LED HD TV  
Samsung FM/CD/DVD 5.1 Home  
Theatre System with Subwoofer  
Winegard® TV Antenna with Power  
Booster and Signal Meter  
Satellite Prep with RG-6 Cable  
(Docking Center to Living Room &  
Docking Center to Bedroom)  
Cable TV and Phone Hook-Up

**BATHROOM**

**STANDARD FEATURES**  
Heat & A/C Ducts  
Corian® Countertop with Undermount Sink  
1-piece Fiberglass Shower  
Brushed Nickel One-Lever Faucet  
Water Shut-Off Valves at Toilet and Sink  
12V Power Vent  
Removable Handheld Brushed  
Nickel Shower Head

**KITCHEN • APPLIANCES**

**STANDARD FEATURES**  
Corian® Countertops and Backsplash  
Recessed range with Corian® flush mount  
insert and hidden stowing compartment  
Stainless Steel Sink  
Corian® flush mount inserts for sink  
Residential Brushed Nickel One-  
Lever Faucet with Sprayer  
Norcold 8 cu ft Refrigerator  
30" Microwave OTR with light and  
power exhaust fan to exterior  
Free-Standing Dinette Table with Hidden Leaf  
Dinette Chairs with Storage (2)  
Folding Dinette Chairs (2)

**OPTIONAL FEATURES**

**Norcold 10 cu ft Refrigerator**  
**Norcold 12 cu ft 4-Door Refrigerator**  
**(n/a LS32FW, LS34SB)**  
**Norcold 12 cu ft 4-Door Refrigerator with**  
**Ice Maker (n/a LS32FW, LS34SB)**  
**HPL Wood Flooring**  
**Sharp® Stainless Steel Convection**  
**Microwave (vented to exterior)**  
**Cooktop with doors below in place of oven**  
**Kitchen Island Cabinet with Corian®**  
**Countertop (LS32FW, LS35SB, LS36FW)**  
**Kitchen Island with Stainless Steel double sink**  
**and Corian® Countertop (LS37CKSL, LS37RESL)**

**BEDROOM**

**STANDARD FEATURES**  
Mirrored Wardrobe Doors Framed  
in Cherry Hardwood  
60" x 80" Queen Bed Pillow-Top Mattress  
Ultra Deck Mattress Foundation with Gas  
Struts and Under the Bed Storage  
Residential Comforter with Pillows  
Residential Headboard with Nailhead Trim  
V-Grooved Glass Privacy Door with Shade  
Full Height Ceilings in Front Bedroom  
Night Shades in Bedroom  
2nd Satellite Prep

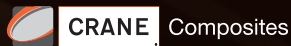
**OPTIONAL FEATURES**

**King Bed Pillow-Top (n/a LS32FW, LS34SB)**  
**26" LCD HD TV**



**Quality. Innovation. Integrity.**

LIFESTYLE IS PROUD TO USE PRODUCTS FROM THESE MANUFACTURERS:



LET YOUR AUTHORIZED LIFESTYLE DEALER HELP YOU SELECT YOUR LUXURY RV.



**LIFESTYLELRV.COM**

51700 Lovejoy Dr. • Middlebury, IN 46540 U.S.A.

Phone: 574.825.5578 (LLRV)

Fax: 574.825.5508

Manufacturer's Note: Due to constant product improvements, the specifications, component parts and standard/optional equipment are subject to change without notice or obligation. Product photography or diagrams may show equipment that is optional. Lifestyle reserves the right to make changes in prices and models and to discontinue models without notice or obligation. Components, parts or chassis may have been manufactured at times other than the model year indicated. All capacities are approximate and dimensions are nominal. All dry weights are based on standard model features and do not include optional features or equipment. Various RV components and features may differ to conform to local codes. Appliances and other components are warranted by the individual manufacturer. Our Warranty is transferable within the first two (2) years for a small processing fee. For a copy of the warranty with full terms and conditions, ask your local Lifestyle dealer. © 2012 Lifestyle Luxury RV. Printed in U.S.A.