

# SOLERA

A DIVISION OF FOREST RIVER





**24S** - CHERRY / FIELDSTONE

## FEATURES

1 The Solera 24MS is the perfect coach for couples on the go. By day, it offers a large living area with electric reclining theater seats.

2 With the push of a button, a queen size Serta murphy-bed drops from the wall giving you a great night's sleep.

3 The Solera offers an optional back-up camera with a 7" color monitor. Putting the monitor in the rear-view mirror allows you to keep your eyes on the road ahead. The separate monitor also allows you to use your radio or GPS while still using the camera.

4 All Solera's feature a 7" touch-screen radio. The radio offers AM/FM, CD and DVD playback, USB, Aux, weatherband and Bluetooth standard. The radio also offers the option of an iPod connector and in dash GPS.



## SOLERA PROUDLY MERGES BEAUTY AND EFFICIENCY

Efficient use of space was at the forefront in designing the Solera. The 24S features a fixed bed, a flush floor dinette slide, ample interior storage and to top it all off, an abundance of exterior storage.



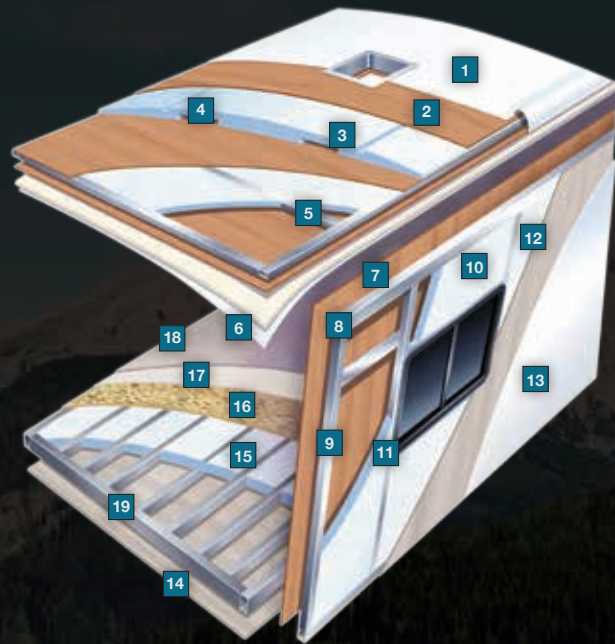
**24R** - CHERRY / SPICE

New for 2013, Solera presents the 24R. This double-slide floorplan is rich in standard amenities. Featuring a walk-around bed, class leading pass-through storage, and two different living room seating configurations, the 24R is the Sprinter that you've been looking for.





# SOLERA CONSTRUCTION



## MULTI-LAYERED LAMINATED ROOF SYSTEM

- 1 CROWNED FIBERGLASS ROOF
- 2 LUAN DECKING
- 3 BLOCK FOAM INSULATION
- 4 DUAL A/C DUCTS
- 5 TUBULAR ALUMINUM FRAMING
- 6 INTERIOR CEILING MATERIAL

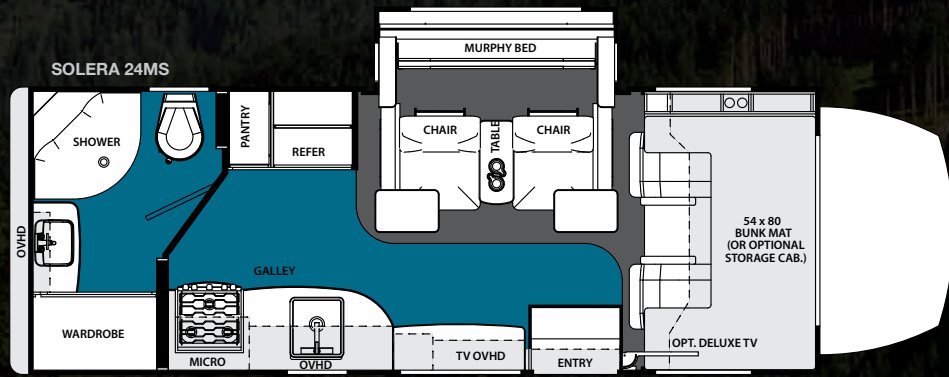
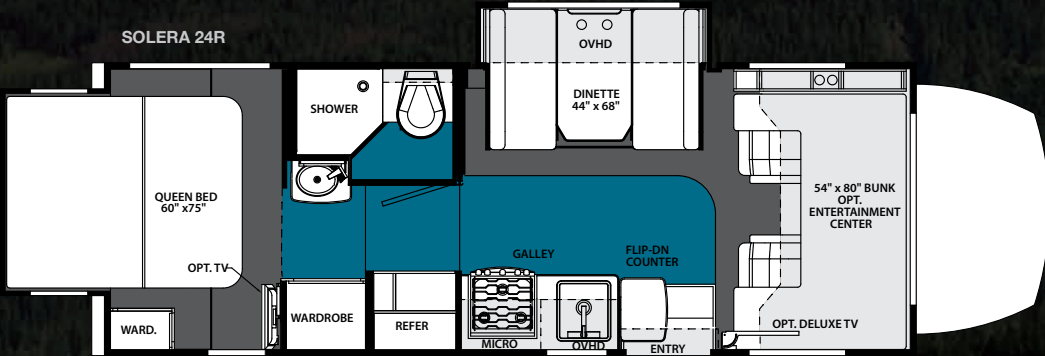
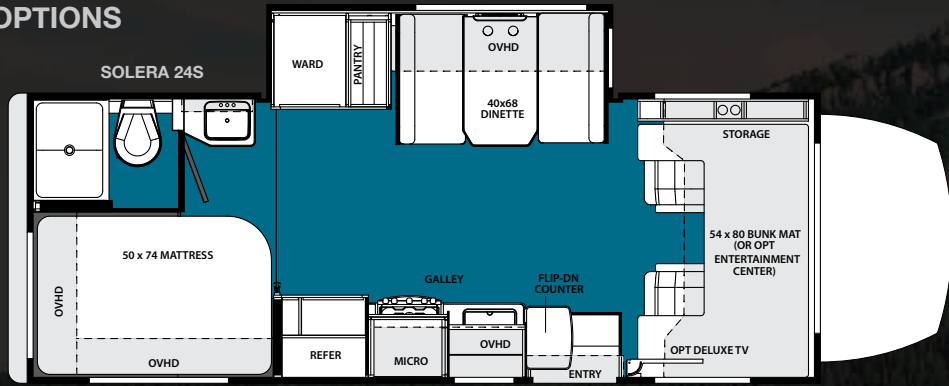
## VACUUM-BOND LAMINATED SIDEWALLS

- 7 DECORATIVE INTERIOR WALL BOARD
- 8 TUBULAR ALUMINUM FRAMING
- 9 EGS METAL BACKERS
- 10 BLOCK FOAM INSULATION
- 11 OPENING FRAMED IN ALUMINUM
- 12 SUPERLITE COMPOSITE
- 13 SMOOTH GELCOAT FIBERGLASS EXTERIOR

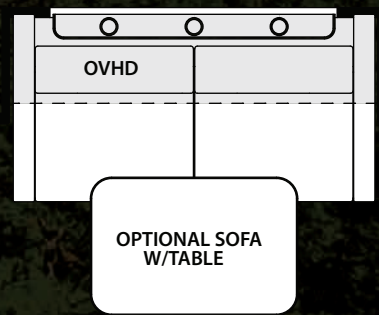
## VACUUM-BOND LAMINATED FLOOR SYSTEM

- 14 FIBERGLASS BOTTOM BOARD
- 15 BLOCK FOAM INSULATION
- 16 SEAMLESS FLOOR DECKING
- 17 BEAUFLOFLOORING (IN SOME AREAS)
- 18 CARPET WITH PAD (IN SOME AREAS)
- 19 1.5" ALUMINUM FRAMING

# FLOORPLAN OPTIONS



## SOLERA FLOORPLAN OPTIONS



SOLERA 24S & 24R OPTION

### BlueTEC Diesel Engine

One of the world's cleanest diesel engines delivers more power while producing fewer emissions thanks to BlueTECH SCR technology. The 3.0L v-6 engine boasts 188hp and 325 lb-ft of rated torque.



## DECOR OPTIONS



CHERRY



MAPLE



PUMICE



SPICE



FIELDSTONE

## EXTERIOR OPTIONS



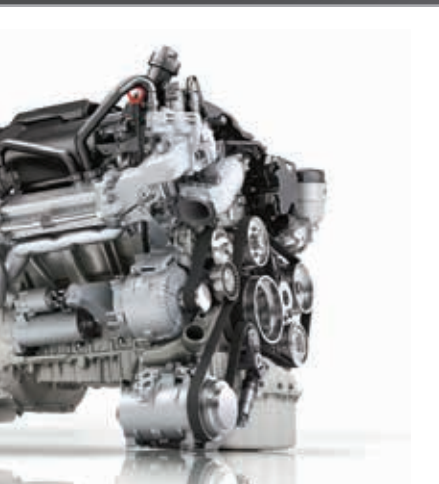
CAPPUCINO FULL BODY PAINT



GARNET FULL BODY PAINT



STANDARD EXTERIOR



### MERCEDES BENZ

	24MS	24R	24S
WHEELBASE	170.3	170.3	170.3
GVWR	11030	11030	11030
GAWRR	7720	7720	7720
GAWRF	4080	4080	4080
UVW	9800	9852	9700
GCWR	15250	15250	15250
NCC	1230	1178	1330
FUEL CAP. (GAL)	26.4	26.4	26.4
HITCH RATING	3.5k/350	3.5k/350	3.5k/350
TOTAL LENGTH	24'8"	24'10"	24'8"

### CAPACITIES AND DIMENSIONS

	24MS	24R	24S
EXTERIOR HEIGHT W/ A/C	11'8"	11'8"	11'8"
EXTERIOR WIDTH	91.5	91.5	91.5
INTERIOR WIDTH	88	88	88
INTERIOR HEIGHT	84	84	84
FRESH WATER (GAL)	35	35	35
GREY WATER (GAL)	32	30	33
BLACK WATER (GAL)	32	30	33
L.P. CAPACITY (GAL)	9.8	9.8	9.8
AWNING LENGTH	15'6"	15'6"	15'6"
WATER HEATER (GAL)	6	6	6
SLEEPING CAPACITY	4	4	4
EXTERIOR STORAGE (CU.FT.)	28	75	67

## SOLERA STANDARDS & OPTIONS

### WARRANTY:

- 12 Months/12,000 mile basic limited warranty
- 3 year/36,000 mile basic limited chassis warranty
- 5 year/100,000 mile diesel engine limited warranty

### SYSTEMS:

#### STANDARD FEATURES

- Battery disconnect
- Water heater by-pass kit
- Deep cycle coach battery
- 30 amp, 12 volt distribution panel & 30' power cord
- 55 amp, 12 volt power converter
- Six gallon gas/electric, electronic ignition DSI water heater
- 30,000 BTU electronic ignition furnace
- 13,500 BTU ducted roof air conditioner
- 3.6 KW Onan LP generator
- Generator auto transfer switch
- One year CoachNet service
- Arctic package
- Water filtration system

#### OPTIONAL FEATURES

- Diesel generator
- Second auxiliary deep cycle coach battery
- 15,000 BTU ducted roof air conditioner with heat pump (N/A with diesel generator)

### EXTERIOR:

#### STANDARD FEATURES

- 1.5" laminated Gelcoat sidewalls, vacuum bonded with aluminum frame structure, steel backers and foam insulation
- Azdel superlite composite substrate
- A & E electric awning
- A & E slide-out awning
- Fiberglass roof
- Stainless steel wheel liners
- Lockable rotocast storage compartments
- Patio light
- Entry door with screen door and dead bolt lock
- Fiberglass running boards
- All radius style exterior doors
- Entry assist handle
- Electric entry step
- "Easy-Dump" valve dump stations
- "Easy-Fill" exterior water fill stations
- 110 volt, GFI protected exterior receptacle
- Tinted sliding windows
- Deluxe break-away mirrors
- 3,500 lb tow hitch with 7-pin connector
- Spare tire
- Roof ladder
- Outside shower

#### OPTIONAL FEATURES

- Bigfoot 2 point hydraulic stabilizers
- Full body paint
- Fiberglass front cap

### CAB AREA:

#### STANDARD FEATURES

- 7" touch-screen AM/FM radio with CD, DVD USB, Aux, weatherband and Bluetooth
- Cab area privacy curtains
- Cruise Control
- Power windows and door locks

### OPTIONAL FEATURES

- Color back-up camera with monitor
- GPS navigation and iPod dock
- Ultra-leather driver/passenger seats

### GALLEY AREA:

#### STANDARD FEATURES

- High-neck faucet
- Three burner range with oven
- Six cubic foot refrigerator with freezer
- Raised wood refrigerator panel
- Range hood with fan and light
- Residential-style drawer construction with solid wood fronts and ball-bearing drawer guides
- Microwave oven
- Flip-up countertop
- Sink cover

### BATHROOM AREA:

#### STANDARD FEATURES

- Large medicine cabinet with mirrored cabinet door
- Deep sink with dual control faucet
- Porcelain toilet
- Glass shower door
- Bath amenity package (towel bar, tissue, toothbrush & soap holder)
- Electric roof vent
- Molded ABS shower pan & surround
- Shower head with flexible hose extension
- Shower skylight

### BEDROOM AREA:

#### STANDARD FEATURES

- Night shades with upscale window treatments
- BI-fold privacy door
- Light switch
- Rear bedroom window

### LIVING ROOM AREA:

#### STANDARD FEATURES

- Cherry or maple wood cabinetry throughout with raised panel doors
- Rubbed bronze handles
- Dream dinette (24R & 24S)
- Night shades with deluxe window treatments
- Seven foot ceiling height
- Convenience center
- Light switches
- 26" flat panel 12 volt TV (24MS)

#### OPTIONAL FEATURES

- Cab-over entertainment center with 26" flat panel 12 volt TV (24R & 24S)
- 24" flat panel side 12 volt TV
- Storage cabinets IPO overhead bunk (24MS)
- Front cab-over bunk window (N/A w/ ant center, storage cabinets or front cap)
- Fantastio Fan
- Sofa IPO of dinette
- 5.1 Surround sound

### OPTIONAL SOLERA:

#### "SPECIAL EDITION" PACKAGE

- Fiberglass front cap
- Frameless windows
- Upgraded countertops
- Ultra-Leather driver/passenger seats
- GPS navigation and iPod dock
- Soft-touch vinyl ceiling
- Glass light fixtures
- Woodgrain dash
- Hidden hinges
- Upgraded faucets
- Carpet in cab area

## 24/7 EMERGENCY ROADSIDE ASSISTANCE

For a worry-free ownership experience Forest River includes one

# Coach-Net<sup>®</sup>

RV Technical & Roadside Assistance

year of Coach-Net RV Technical & Roadside Assistance with each RV purchase. Whether new to the RV lifestyle or an experienced RV enthusiast, Forest River owners have 24/7 access to technical, operational and emergency road service coverage throughout the US & Canada.

Coach-Net's fast, dependable service is just a phone call away.



### PRE-DELIVERY INSPECTION FACILITY

20,000 square feet of quality assurance. The bare essentials for a premium product. This state-of-the-art facility gives immediate daily feedback to production for quality assurance in every unit built.



Forest River, Inc. encourages our customers to purchase their Forest River products from a local dealership whenever possible for the following reasons:

- 1) Forest River, Inc. dealers are independently owned and operated businesses so priority service and scheduling is at their discretion and is often provided to customers that purchased their unit at that dealership.
- 2) Purchasing locally allows customers to establish meaningful relationships with a dealer, enhancing the RV experience through assistance with product questions, user tips or RV regulations for your state or country, and much more!
- 3) Canadian customers must meet requirements to bring an RV purchased out of the country to their home. These requirements may involve additional inspections and certifications, taxes and fees. Your local Canadian Dealer is a professional at meeting these requirements.
- 4) Scheduling timely warranty repairs and adjustments through a local dealership provides far greater flexibility and convenience to you, the customer!

It is the goal of Forest River, Inc. that all of our RV owners fully enjoy the RV experience and that customer satisfaction meets or exceeds their expectations!

**FREE MEMBERSHIP**  
to Forest River Owners' Group

[www.forestriverfrog.com](http://www.forestriverfrog.com)



### Learn More

Scan this barcode using a QR Reader on your smart phone to learn more about Forest River.



A Berkshire Hathaway company.

YOUR SOLERA DEALER

914 CR 1 ELKHART, IN 46514 574.262.2212 800.445.2825

[www.forestriverinc.com/solera](http://www.forestriverinc.com/solera)

All specifications contained herein are based on the latest product information at time of printing. Forest River reserves the right to make changes in colors, materials, equipment and specifications at any time without notice and assumes no responsibility for any errors in this brochure.

©2013 Solera - a division of Forest River Inc.  
A Berkshire Hathaway company