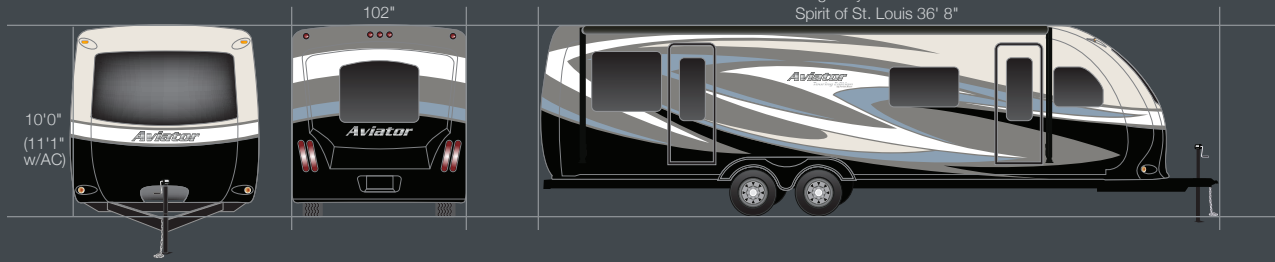


Electra 29' 1"
Wright Flyer 34' 0"
Spirit of St. Louis 36' 8"



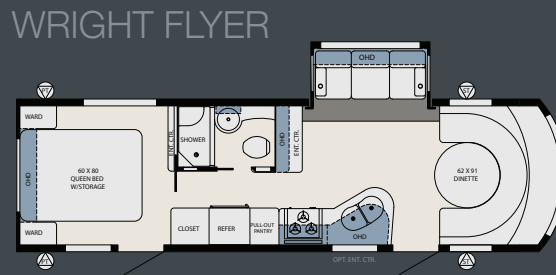
Aviator

Touring Edition

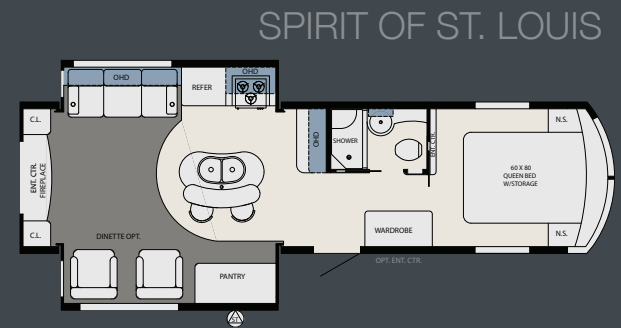
by Forest River



ELECTRA



WRIGHT FLYER



SPIRIT OF ST. LOUIS

STANDARD KITCHEN FEATURES

- 8 CU. FT. REFRIGERATOR W/ STAINLESS STEEL INSERTS
- 1.7 CU. FT. STAINLESS STEEL FRIGIDAIRE® OTR CONVECTION MICROWAVE
- ATWOOD® STAINLESS STEEL COOKTOP W/SEALED BURNERS AND RANGE COVER
- PULL OUT TRASH CONTAINER
- INTEGRATED SPICE RACKS ON CABINET DOORS
- SOLID SURFACE COUNTERTOP W/ UNDERMOUNT DOUBLE BOWL SINK
- SOLID SURFACE SINK COVERS
- RESIDENTIAL SINGLE LEVER PULLDOWN KITCHEN FAUCET
- LED COURTESY LIGHTING
- DECORATIVE MICRO-TILE BACKSPLASH

STANDARD LIVING ROOM FEATURES

- 74" RESIDENTIAL SOFA HIDE-A-BED (SOME MODELS)
- SOLID SURFACE DINETTE TABLE
- HYDRAULIC DINETTE TABLE LIFT SYSTEM (SOME MODELS)
- LED CEILING LIGHTS W/DIMMER SWITCH
- LED DIRECTIONAL READING LIGHTS

STANDARD BATHROOM FEATURES

- ONE PIECE FIBERGLASS SHOWER W/ BENCH SEATING
- DECORATIVE SLIDING GLASS SHOWER DOOR
- TINTED SKYLIGHT OVER SHOWER
- AQUA-MAGIC™ CERAMIC TOILET
- SOLID SURFACE COUNTERTOP W/ UNDERMOUNT LAVATORY SINK
- MEDICINE CABINET W/MIRROR
- LED CEILING LIGHTS W/DIMMER SWITCH
- DECORATIVE TOILET PAPER HOLDER
- DECORATIVE TOWEL BAR AND RING
- MONITOR CONTROL PANEL

STANDARD BEDROOM FEATURES

- 60" X 80" PILLOWTOP MATTRESS
- LED CEILING LIGHTS W/DIMMER SWITCH
- DECORATIVE NECK-ROLL PILLOWS AND BED SPREAD
- LED DIRECTIONAL READING LIGHTS
- LED COURTESY LIGHTING

STANDARD EXTERIOR FEATURES

- FULL BODY PAINT WITH CLEAR COAT PROTECTION
- ARMORCOAT™ PROTECTION ON FRONT HOOD
- TWIN 30# LP BOTTLES W/AUTO REGULATOR
- DUAL BATTERY RACK
- LED PATIO LIGHT W/CHROME BEZEL

- LED FLOOD LIGHTS W/CHROME BEZELS
- LED TAIL LIGHTS
- LED LICENSE PLATE LIGHT
- LED STORAGE COMPARTMENT LIGHTS
- REAR FIBERGLASS CAP
- SLAM LATCH BAGGAGE DOORS
- 50 AMP DETACHABLE POWER CORD W/ LED SIGNAL LIGHTING
- ONE PIECE FIBERGLASS ROOF

STANDARD INTERIOR FEATURES

- 16GB SD CARD: INCLUDES OWNER'S MANUALS AND ALL UNIT SPECIFIC INFORMATION
- DIGITAL WALL THERMOSTAT
- SUBURBAN™ 30,000 BTU FURNACE
- SUBURBAN™ 10 GAL. GAS/ELEC DSI "QUICK RECOVERY" WATER HEATER
- WATER FILTRATION SYSTEM
- SOFT TOUCH CEILING
- ALUMINUM SKINNED CABINET DOORS W/RECESSED HIDDEN HINGES
- FULL EXTENSION BALL-BEARING DRAWER GUIDES W/DEEP DRAWERS
- DECORATIVE DAY/NIGHT SHADES
- SHAW® R2X STAIN AND SOIL RESISTANT CARPETING
- DESIGNER CAREFREE® LINOLEUM FLOORING
- ALUMINUM FRAMED DINETTE BASE
- 57 GAL. FRESH WATER TANK CAPACITY
- 47 GAL. GRAY TANK CAPACITY
- 47 GAL. BLACK TANK CAPACITY

FIRST CLASS PACKAGE (STD.)

- CAREFREE ELECTRIC BOX AWNING WITH WIND SENSOR
- BONDED TINTED SAFETY GLASS WINDOWS
- ALUMINUM SPILT SPOKE RIMS
- FIBERGLASS ROCKER PANELS AND WHEEL SKIRTS
- SEWER HOSE MANAGEMENT SYSTEM
- THERMA HEAT ELECTRIC FIREPLACE
- SONY 1000 WATT BLURAY 5.1 HOME THEATER SYSTEM
- MAXXAIR VENT IN BATHROOM W/ ELECTRONIC WALL CONTROL
- PULL OUT PANTRY W/ 8 BASKETS

TOURING EDITION PACKAGE (OPT.)

- MAXXAIR ROOF VENTS W/ WALL CONTROL LIVING ROOM AND BEDROOM
- 15K BTU AIR CONDITIONER
- SLIDE OUT AWNING TOPPER
- BLUE LED MOOD LIGHTING IN LIVING ROOM AND BEDROOM (DIMMER)
- ELECTRIC STABILIZER JACKS
- POWER TONGUE JACK
- SONY 32" HD LCD TV IN BEDROOM

ADDITIONAL OPTIONS

- MAXXAIR ROOF VENTS W/ WALL CONTROL LIVING ROOM AND BEDROOM (TE)
- 15K BTU AIR CONDITIONER (TE)
- BONDED THERMO-PANE TINTED SAFETY GLASS WINDOWS
- ULTRA HEAT TANK HEATERS
- SLIDE OUT AWNING TOPPER (TE)
- BLUE LED MOOD LIGHTING IN LIVING ROOM AND BEDROOM (DIMMER) (TE)
- SONY 32" HD LCD TV - BEDROOM (TE)
- SONY 32" HD LCD TV - OUTSIDE ENTERTAINMENT CENTER
- OUTSIDE ENT. CENTER W/ SONY 12V CD/DVD/VCD/SACD STEREO W 2 SPEAKERS
- MAIN ENTRANCE DOOR W/ KEYPAD AND LED MOTION SENSOR LIGHT
- SONY TABLET AND WIRELESS ROUTER
- ELECTRIC STABILIZER JACKS (TE)
- POWER TONGUE JACK (TE)
- PREMIUM PAINT PACKAGE

Your Aviator Dealer



Learn More

Scan this barcode using a QR Reader on your smart phone to learn more about Forest River.



A Berkshire Hathaway company.