



# SPORTSMEN *Sportster*



*Come home to KZ!*





## Sportsmen Sportster

Versatility and comfort are evident in the Sportsmen Sportster toy hauler, available as a travel trailer or a fifth wheel.

**305TH** Sleeping space for the whole family including queen bed, convertible U-dinette, plus 10' long cargo space for hauling your toys. Plenty of storage in the kitchen cabinets, pantry, entertainment center and overhead cabinets.



**305TH**  
Midnight Décor with Legacy Cherry



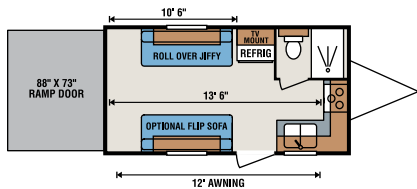
**Coach-Net**

RV Membership Plans

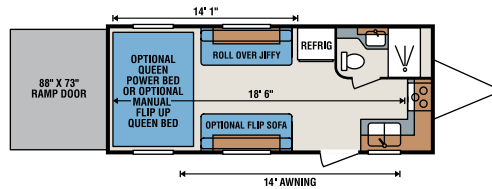
One Year **FREE**  
Road Side Assistance  
courtesy of KZ!



## Travel Trailer Toy Haulers



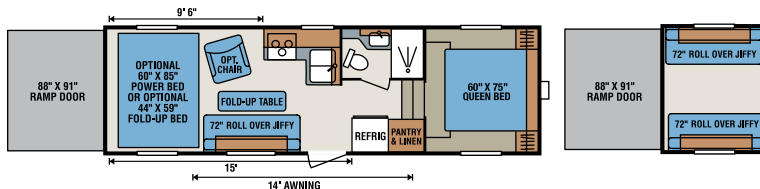
17TH



22TH

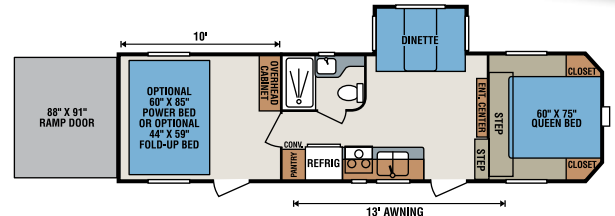


## Fifth Wheel Toy Haulers

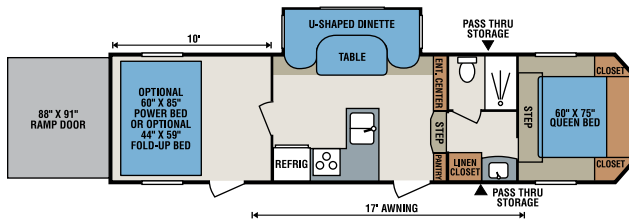


265TH • 2nd Flip Jiffy Option available

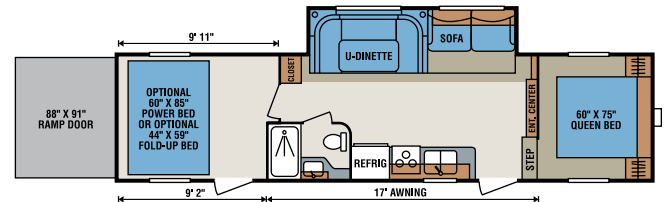
265TH 2nd Flip Jiffy Option



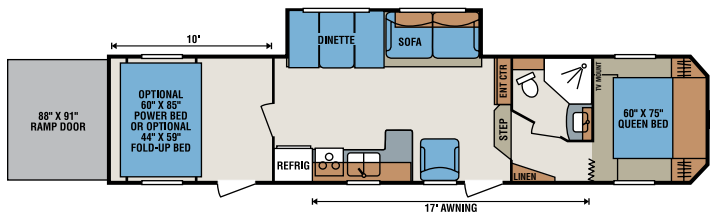
295TH



305TH



315TH



365TH



365TH Closet Slide Option

TOY HAULERS	17TH	22TH	265TH	295TH	305TH	315TH	365TH
UVW (Unloaded Vehicle Weight)*	3,654	4,248	6,088	7,200	7,590	8,080	8,970
Dry Hitch Weight*	676	898	1,356	1,480	1,370	1,590	1,560
Dry Axle Weight*	2,978	3,350	4,732	5,720	6,220	6,490	7,410
NCC (Net Carrying Capacity)	2,346	2,752	2,712	3,800	3,410	2,920	4,030
GVWR	6,000	7,000	8,800	11,000	11,000	11,000	13,000
Interior Height	78"	78"	91"	92 1/4"	92"	91"	92"
Exterior Height without A/C	10' 2"	10' 4"	12' 2"	146"	12' 3"	12' 2"	12' 7"
Exterior Width	96"	96"	96"	96"	96"	96"	96"
Exterior Length	19' 5"	24' 5"	28' 6"	31' 6"	34' 2"	35' 2"	38' 6"
Refrigerator (cu. feet)	5	5	5	5	5	5	5
Water Heater Cap. (gal. Gas DSI) OPT.	6	6	6	6	6	6	6
Fresh Water Cap. (gal.)	38	38	75	75	75	75	75
Waste Water Cap. (gal.)	32	32	32	32	57	32	57
Gray Water Cap. (gal.)	32	32	32	32	57	32	57
LP Gas Cap. (lbs.) OPT.	40	40	40	40	40	40	40
Furnace BTUs (1,000s) OPT.	16	16	25	25	30	25	30
Tire Size	14"	14"	15"	15"	15"	15"	15"
Awning	12'	14'	14'	13'	17'	17'	17'

\*This weight reflects the rolling average unit weight for each model. Your trailer weight will vary according to optional equipment.





315TH



**315TH** Kitchen standards include glazed cabinetry, microwave, 3 burner cooktop, and sink cover. Upgrade your unit with optional larger refrigerator and oven.

### Standards

- Awning with Drip Rail and Spouts
- Microwave with Turntable
- AM/FM/CD Player
- 13,500 BTU AC
- 6 Gallon Gas DSI Water Heater
- Monitor Panel
- Power Vent in Bathroom
- Tinted Safety Glass Windows
- 5 Cubic Foot Refrigerator
- TV Antenna with Booster
- Acrylic Sink
- Solid Wood Framed Mortise and Tenon Glazed Cabinet Doors
- 20# Gas Bottles
- Patio Door Light
- Large Overhead Cabinets
- Built-In Medicine Cabinet with Mirror in Bathroom
- 30 Amp Service

- Range Hood with 12V Light and Exhaust Fan
- 3 Burner Cooktop
- 1 Piece Seamless Roof
- Cable Hook Up
- Radius Entry Door
- Mini Blinds
- Quilted Mattress
- Roller Ball Bearing Drawer Guides
- Decorative Border Tape
- Sink Cover
- Enclosed Pin Box on Fifth Wheel
- Front Power Jacks on Fifth Wheels
- Box Style Valances
- Smooth Screwless Baggage Doors
- Tuff Ply in Cargo Area (315TH Only)
- Tub Surround
- Satellite Prep
- Water Heater By-pass
- Dexter **NEV-R-ADJUST™** Brakes

### Options

- 6 Gal. Gas/Electric DSI Water Heater
- Bottle Cover
- Chair – 1 or 2 (N/A with Jiffy)
- Diamond Plate Threshold
- Flip Up Full Size Bed (N/A on 17TH) (N/A with Power Bed)
- Pull Down Screen Wall
- Aluminum Wheels
- Outside Grill
- Outside Shower
- 2 Exterior Speakers
- Spare Tire
- Stabilizer Jacks – 2 or 4
- 6 Cubic Foot Refrigerator
- Power Awning
- Power Bed (N/A on 17TH) (N/A with Flip Up Bed)
- Fuel Cell and Pump Station (N/A 17TH & 22TH)

- 4.0 Generator (Requires Fuel Cell and Pump)
- Fiberglass Exterior (Forced on 265TH, 295TH, 305TH, 315TH & 365TH)
- Winter Bypass Kit
- Generator Prep (N/A 17TH & 22TH)
- Wired for 2nd A/C – 50 Amp Service

### Standard Run Package

- 6 Cubic Foot Refrigerator
- Spare Tire
- Stabilizer Jacks – 2 or 4
- 30# Gas Bottle with Cover
- Assist Grab Handle
- 2 Exterior Speakers
- Gas/Electric DSI Water Heater
- Outside Shower (Where Available)
- Oven



**Dealer Satisfaction Index:** Ratings of manufacturers, by dealers, have consistently awarded KZ top honors for excellence of design, reliability, overall quality and value, communications and dealer support.

**ASK ABOUT OUR 2-YEAR LIMITED WARRANTY!**



**Join our Family Forum at [www.kzfamilyforum.com](http://www.kzfamilyforum.com)**

Dealer:



Portions of this brochure were used with the expressed authority of Dexter Axle, but Dexter Axle is not responsible for the accuracy of the information contained herein.

For more product details and in-depth information, visit us at [www.kz-rv.com](http://www.kz-rv.com) |



0985 N 900 W • Shipshewana, IN 46565  
E-mail [kz@kz-rv.com](mailto:kz@kz-rv.com) • [www.kz-rv.com](http://www.kz-rv.com)



*Due to continual research and advances, manufacturer reserves the right to change specifications, design, price and equipment without notice, and assumes no responsibility for any error in this literature. Some items shown are not included as standard or optional equipment. ©2013KZ | 1/15/13 | 25M*