

FORESTER

A DIVISION OF FOREST RIVER





3051S - CHERRY / RUSSET



1



2



3

FEATURES

1 All Foresters feature heated/enclosed holding tanks and utility station. Your tanks stay warm with forced furnace heat and your dump area remains free from road debris.

2 The Forester offers an optional back-up camera with 7" color monitor. Putting your monitor in the rear-view mirror allows you to keep your eyes on the road ahead. The separate monitor also allows you to use your radio or GPS while still driving.

3 All Foresters feature a 7" touch-screen radio. The radio offers AM/FM, CD and DVD playback, USB, Aux, weatherband and Bluetooth standard. The radio also offers the option of an iPod connector and in dash GPS.

4 Select Forester floorplans now offer a 32" outside TV. This 12 volt HD TV also comes with an outside DVD/CD player and speakers.



4

2

THE FORESTER OFFERS UNCOMPROMISING INNOVATION

New for 2013, Forester proudly introduces the 3051S. Featuring a full-wall slide, the 3051S gives you unparalleled living space. Without compromising space in your bed, bath or living area, the Forester 3051S gives you an amazing kitchen. The kitchen features a residential sized convection microwave, range-top, pantry, tons of counter space and drawers for all your cooking needs. To complete the kitchen, why not option the 4-door 12.3 cubic ft. refrigerator with ice maker shown above. Available in the 3051S and 3011DS, this refrigerator is a first in Class C's.



2861DS - CHERRY / CAFE

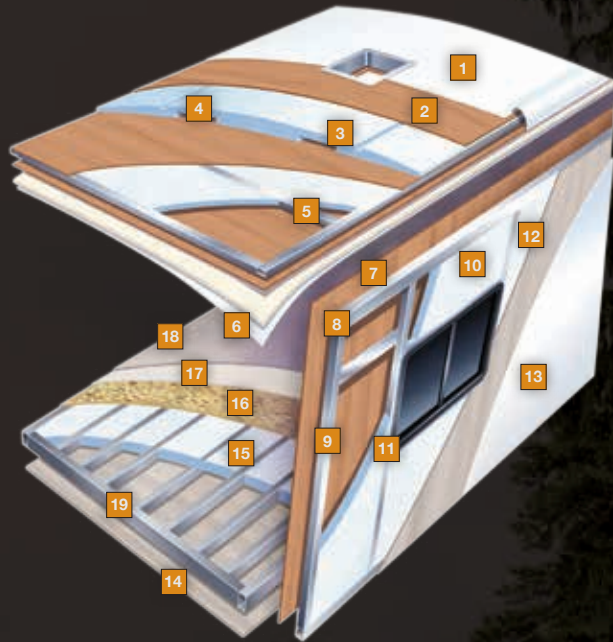


2861DS WITH STANDARD OUTSIDE KITCHEN



3011DS KITCHEN IN MAPLE

FORESTER CONSTRUCTION



MULTI-LAYERED LAMINATED ROOF SYSTEM

- 1 CROWNED FIBERGLASS ROOF
- 2 LUAN DECKING
- 3 BLOCK FOAM INSULATION
- 4 DUAL A/C DUCTS
- 5 1.5" TUBULAR ALUMINUM FRAMING
- 6 INTERIOR CEILING MATERIAL

2-INCH VACUUM-BOND LAMINATED SIDEWALLS

- 7 DECORATIVE INTERIOR WALL BOARD
- 8 1.5" TUBULAR ALUMINUM FRAMING
- 9 EGS METAL BACKERS
- 10 BLOCK FOAM INSULATION
- 11 OPENING FRAMED IN ALUMINUM
- 12 SUPERLITE COMPOSITE
- 13 SMOOTH GELCOAT FIBERGLASS EXTERIOR

VACUUM-BOND LAMINATED FLOOR SYSTEM

- 14 FIBERGLASS BOTTOM BOARD
- 15 BLOCK FOAM INSULATION
- 16 SEAMLESS FLOOR DECKING
- 17 BEAUFLOFLOORING (IN SOME AREAS)
- 18 CARPET WITH PAD (IN SOME AREAS)
- 19 1.5" ALUMINUM FRAMING

SHOWN WITH OPTIONAL
ENTERTAINMENT CENTER





SANDSTONE FULL BODY PAINT

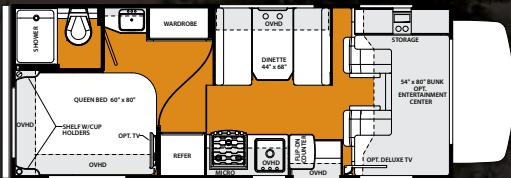


ALMOND FULL BODY PAINT

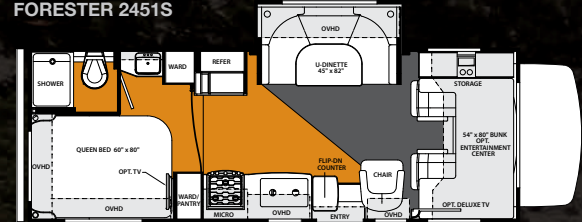


STANDARD EXTERIOR

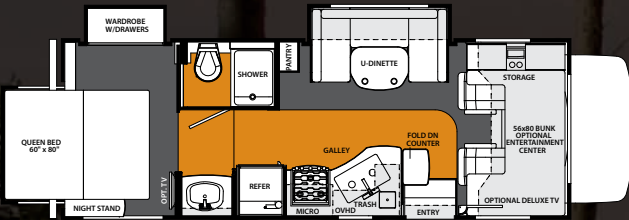
FORESTER 2301



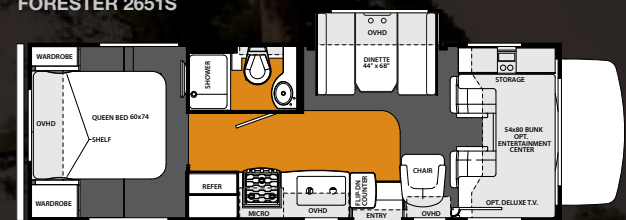
FORESTER 2451S



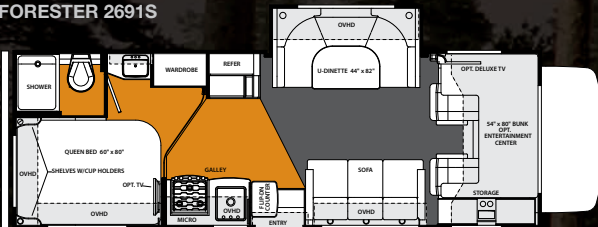
FORESTER 2501TS



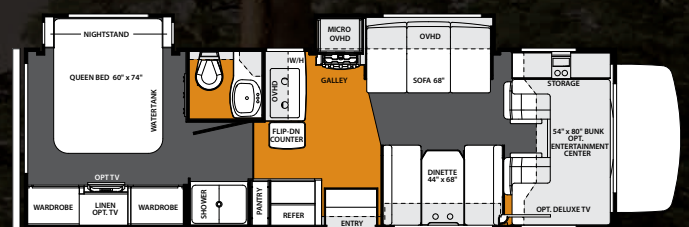
FORESTER 2651S



FORESTER 2691S



FORESTER 2861DS



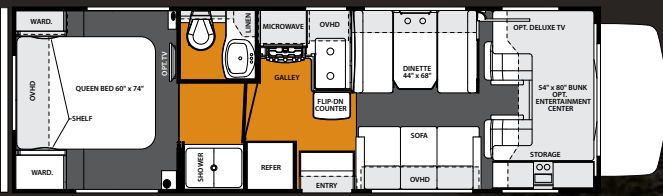
5

TV: OUTSIDE TV

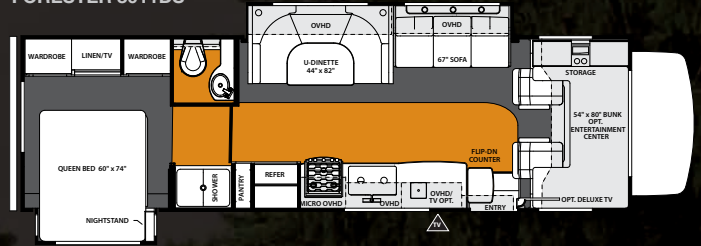
	FORD CHASSIS [6.8L V10 305 HP & 420 FT/LBS TORQUE]												CHEVY CHASSIS [6.0L V8 324 HP & 373 FT/LBS TORQUE]				
	2301	2451S	2501TS	2651S	2691S	2861DS	2901	3011DS	3051S	3101SS	3121DS	3171DS	2301	2451S	2501TS	2861DS	2901
WHEELBASE	158"	182"	182"	193"	202"	202"	188"	220"	220"	220"	220"	220"	159"	183"	183"	203"	189"
GVWR	12500	14500	14500	14500	14500	14500	14500	14500	14500	14500	14500	14500	14200	14200	14200	14200	14200
UVW	9950	11200	11500	11100	11260	12100	10990	12400	12848	11900	12200	12500	9890	11200	11500	12400	11400
GCWR	18500	22000	22000	22000	22000	22000	22000	22000	22000	22000	22000	22000	20000	20000	20000	20000	20000
NCC	2550	3350	3000	3400	3240	2400	3510	2100	1652	2600	2300	2000	4310	3000	2700	1800	2800
FUEL CAP. (GAL)	55	55	55	55	55	55	55	55	55	55	55	55	57	57	57	57	57
HITCH RATING	5k/500	5k/500	5k/500	5k/500	5k/500	5k/500	5k/500	5k/500	5k/500	5k/500	5k/500	5k/500	5k/500	5k/500	5k/500	5k/500	5k/500
TOTAL LENGTH	24'6"	26'11"	26'11"	28'4"	28'1"	30'9"	29'9"	32'3"	31'11"	31'11"	31'11"	32'3"	25'	27'5"	27'5"	31'3"	30'3"



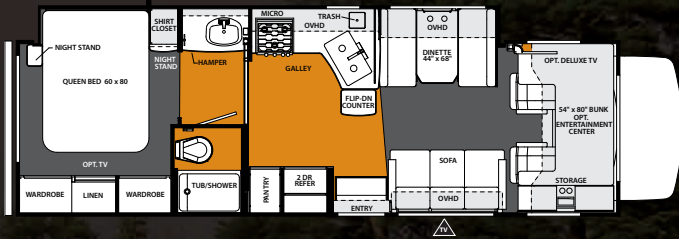
FORESTER 2901



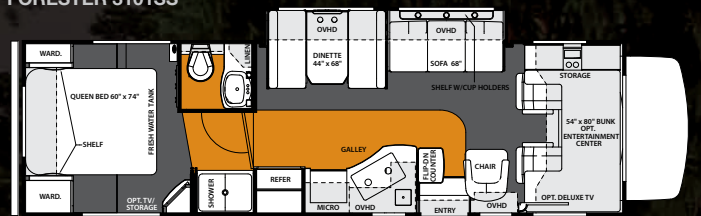
FORESTER 3011DS



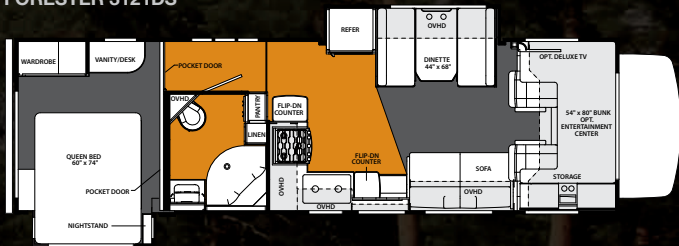
FORESTER 3051S



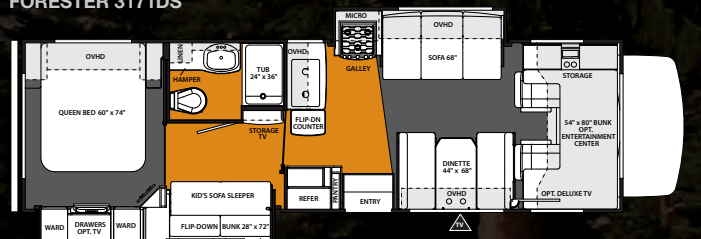
FORESTER 3101SS



FORESTER 3121DS

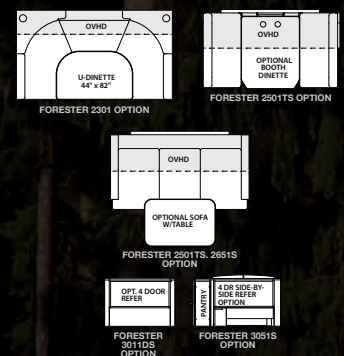


FORESTER 3171DS



	CAPACITIES AND DIMENSIONS											
	2301	2451S	2501TS	2651S	2691S	2861DS	2901	3011DS	3051S	3101SS	3121DS	3171DS
EXTERIOR HEIGHT W/ A/C	11'3"	11'3"	11'3"	11'3"	11'3"	11'3"	11'3"	11'3"	11'3"	11'3"	11'3"	11'3"
EXTERIOR WIDTH	101"	101"	101"	101"	101"	101"	101"	101"	101"	101"	101"	101"
INTERIOR WIDTH	95.5"	95.5"	95.5"	95.5"	95.5"	95.5"	95.5"	95.5"	95.5"	95.5"	95.5"	95.5"
INTERIOR HEIGHT	84"/77"	84"/77"	84"/77"	84"/77"	84"/77"	84"/77"	84"/77"	84"/77"	84"/77"	84"/77"	84"/77"	84"/77"
FRESH WATER (GAL)	44	44	44	44	44	44	44	44	44	44	44	44
GREY WATER (GAL)	39	39	39	28	39	39	39	39	39	39	39	39
BLACK WATER (GAL)	39	39	39	28	39	39	39	39	39	39	39	39
L.P. CAPACITY (GAL)	9.8	9.8	9.8	9.8	9.8	9.8	9.8	9.8	9.8	9.8	9.8	9.8
AWNING LENGTH	15'6"	18'	18"	12'6"	14'	16'	14'	15'6"	18'	16'	16'	11'
EXTERIOR STORAGE (CU. FT.)	61	66.84	50	110.4	65.49	62.5	120.9	101.7	81.8	129.2	74.29	80
WATER HEATER (GAL)	6	6	6	6	6	6	6	6	6	6	6	6

FORESTER FLOORPLAN OPTIONS



FORESTER STANDARDS & OPTIONS

WARRANTY:

STANDARD FEATURES

- 12 Months/12,000 mile basic limited warranty
- Bumper-to-bumper 3 years/36,000 mile limited chassis warranty
- 5 years/60,000 mile limited powertrain warranty (Ford)
- 5 years/100,000 mile limited powertrain warranty (Chevy)

SYSTEMS:

STANDARD FEATURES

- Battery disconnect
- Water heater bypass kit
- Deep cycle coach battery
- 30 amp, 12 volt distribution panel & 30' power cord
- 55 amp, 12 volt power converter
- Six gallon gas/electric electronic ignition DSI water heater
- 30,000 BTU electronic ignition furnace
- Emergency start
- Cable TV jack
- 13.5K BTU ducted roof air conditioner
- 4.0 KW Onan Microquiet generator
- Generator auto transfer switch
- One year CoachNet service
- Firestone Ride-Rite air assist suspension
- Water filtration system

OPTIONAL FEATURES

- 2nd auxiliary deep cycle coach battery
- 15K BTU air conditioner with heat pump
- King Dome automatic HD ready satellite system
- Arctic package

EXTERIOR:

STANDARD FEATURES

- 2" laminated Gel Coat sidewalls, vacuum bonded with aluminum frame structure, steel backers & block foam insulation
- A & E electric awning
- Fiberglass front cap
- A & E slide out awnings
- Fiberglass roof
- Stainless steel wheel liners
- Lockable rotocast pass-through storage compartments
- Patio light
- Entry door with screen door & dead bolt door lock
- Fiberglass running boards
- Entry assist handle
- Heated and enclosed holding tanks
- Heated and enclosed "Easy-Dump" valve dump stations
- 110 volt, GFI protected exterior receptacle
- Tinted sliding windows
- Deluxe break-away mirrors
- 5,000 lb. tow hitch with 7-pin connector
- Spare tire
- Roof ladder
- Outside shower
- Exterior security light
- Incorporated entry step
- "Easy-Access" battery compartment in entry step
- Exterior skirt paint package

OPTIONAL FEATURES

- Bigfoot hydraulic automatic leveling jacks
- Deluxe heated/remote exterior mirrors
- Sideview cameras (must option back-up camera)
- Full body paint
- 32" Outside 12 volt TV with DVD/CD player and speakers (2691S, 3011DS, 3051S & 3171DS only)

CAB AREA:

STANDARD FEATURES

- 7" touch-screen AM/FM radio w/ CD, DVD USB, aux, weatherband and bluetooth

- Cab area privacy curtains
- Dual 12 volt power points
- Cruise control
- Power windows and door locks
- Keyless entry (Ford chassis only)

OPTIONAL FEATURES

- Color back-up camera with monitor
- Ultra-leather driver/passenger seats
- GPS navigation system & iPod dock
- Woodgrain dash

GALLEY AREA:

STANDARD FEATURES

- High-neck faucet
- Three burner range with oven
- 6 cubic foot refrigerator/freezer
- Range hood with fan and light
- Residential-style drawer construction with solid wood fronts and ball-bearing drawer guides
- Microwave oven (N/A 3121DS)
- Flip-up countertop extension
- Sink cover
- Raised wood refrigerator panels (N/A 4 door refer)

OPTIONAL FEATURES

- Convection microwave IPO oven (Std. 3121DS)
- 12.3 cu. ft. four door refrigerator with ice maker (3011DS & 3051S only)

BATHROOM AREA:

STANDARD FEATURES

- Large medicine cabinet with mirrored cabinet doors
- Deep sink with dual control faucet
- Porcelain toilet
- Frosted glass shower door
- Bath amenity package (towel bar, tissue, toothbrush & soap holder)
- Electric roof vent fan
- Wall mount mirror
- Molded ABS shower pan & surround
- Shower head with flexible hose extension
- Shower skylight

BEDROOM AREA:

STANDARD FEATURES

- Upgraded Serta Eurotop mattress
- Bedspread with pillow shams (N/A 2501TS)
- TV area with receptacle & cable TV jack
- Night shades with privacy window treatments
- Cedar lined wardrobe and drawers

OPTIONAL FEATURES

- 24" Flat panel 12 volt TV
- Desk and wardrobe IPO bunk beds (3171DS)

LIVING ROOM AREA:

STANDARD FEATURES

- "Soft touch" vinyl padded ceilings with ducted air
- Glass light fixtures with LED bulbs throughout interior
- Cherry or maple wood cabinetry throughout with raised panel doors and hidden hinges
- Rubbed bronze handles
- Dream dinette (not available with U-shaped dinette)
- Ultra leather sofa
- 2-way sofa with convertible sleeping & removable arms
- Night shades with window treatments
- 7' ceiling height
- Convenience center

OPTIONAL FEATURES

- Cab over entertainment center with 40" TV
- 32" flat panel 12 volt side TV
- 5-1 Surround sound
- Fantastic fan
- U-shaped dinette IPO standard dinette (2301)
- Sofa IPO dinette (2851S)
- Standard dinette or sofa IPO U-shape dinette (2501TS)

24/7 EMERGENCY ROADSIDE ASSISTANCE

Coach-Net®

For a worry-free ownership experience Forest River includes one

RV Technical & Roadside Assistance

year of Coach-Net RV Technical & Roadside Assistance with each RV purchase. Whether new to the RV lifestyle or an experienced RV enthusiast, Forest River owners have 24/7 access to technical, operational and emergency road service coverage throughout the US & Canada.

Coach-Net's fast, dependable service is just a phone call away.



PRE-DELIVERY INSPECTION FACILITY

20,000 square feet of quality assurance. The bare essentials for a premium product. This state-of-the-art facility gives immediate daily feedback to production for quality assurance in every unit built.



Forest River, Inc. encourages our customers to purchase their Forest River products from a local dealership whenever possible for the following reasons:

- 1) Forest River, Inc. dealers are independently owned and operated businesses so priority service and scheduling is at their discretion and is often provided to customers that purchased their unit at that dealership.
- 2) Purchasing locally allows customers to establish meaningful relationships with a dealer, enhancing the RV experience through assistance with product questions, user tips or RV regulations for your state or country, and much more!
- 3) Canadian customers must meet requirements to bring an RV purchased out of the country to their home. These requirements may involve additional inspections and certifications, taxes and fees. Your local Canadian Dealer is a professional at meeting these requirements.
- 4) Scheduling timely warranty repairs and adjustments through a local dealership provides far greater flexibility and convenience to you, the customer!

It is the goal of Forest River, Inc. that all of our RV owners fully enjoy the RV experience and that customer satisfaction meets or exceeds their expectations!

FREE MEMBERSHIP
to Forest River Owners' Group

www.forestriverfrog.com



Learn More

Scan this barcode using a QR Reader on your smart phone to learn more about Forest River.



A Berkshire Hathaway company.

YOUR FORESTER DEALER

914 CR 1 ELKHART, IN 46514 574.262.2212 800.445.2825

www.forestriverinc.com/forester

All specifications contained herein are based on the latest product information at time of printing. Forest River reserves the right to make changes in colors, materials, equipment and specifications at any time without notice and assumes no responsibility for any errors in this brochure. LITHO: U.S.A. FOR 0940

©2013 Forester - a division of Forest River Inc.
A Berkshire Hathaway company