

## Standard Features

### Interior

#### Cabinets

- Hardwood Frame Cabinet Doors
- Full Extension Ball Bearing Drawer Guides
- High Pressure Laminate Counter Tops
- Maple Cabinet Color

#### Decor

- Color-Coordinated Designer Interiors
- Embossed Vinyl Flooring
- Carpet & Pad as Shown on Floor Plans
- Extra Padded Dinette Seat Cushions w/ Bolsters in Accent Fabric
- Mini Blinds at All Windows Except Bunks
- Decorative Glass Insert Cabinet Doors in Select Areas

#### Kitchen & Living Area

- Dometic® Double Door Refrigerator
- Wedgewood® 3 Burner Range w/Oven & Piezo
- Radius Counter Tops
- Power Range Hood w/Light
- Large Carousel Microwave Oven w/Clock
- Acrylic Kitchen Sink w/High Rise Faucet
- Decorative Wall Border in Kitchen & Living Area
- Systems Monitor Panel
- 25,000 Btu Ducted Furnace
- 13.5 MBtu Roof Ducted Air Conditioner w/Wall Thermostat
- 120 V to 12 V Power Converter
- TV Antenna w/Booster
- Park Cable Hookup for TV
- 12V AM/FM/DVD/MP3 Stereo w/Aux Input, Interior & Exterior Speakers
- Six Gallon Gas/DSI Water Heater

#### Bedroom & Bath

- Color-Coordinated Quilted Bedspread
- Deluxe Headboard
- Lift-Up Bed Storage w/Gas Piston Struts
- Evergreen® Mattress
- ABS Tub w/ABS Wall Surround
- China Foot Flush Toilet
- Deluxe Medicine Cabinet w/Mirror
- Towel Ring & Toilet Paper Holder
- Skylight Over Tub
- Power Bath Vent

### Exterior

#### Roof Construction

- Tapered Roof Construction to Promote Water Runoff
- Seamless One-Piece Roof w/ Manufacturer's 12-Year Warranty
- Awning Drip Rail w/Extra Long Down Spouts

#### Wall Construction

- Wall Studs on 16" Centers (Maximum)
- Steel Strap Reinforcement on Walls for Superior Durability
- R-7 Settle-Resistant Insulation
- Twist Locks on All Storage Doors
- Clamp Ring Radius Corner Windows
- Patio Convenience Light
- Radius Entry Door w/Screen
- Assist Handle at Entry Door

#### Chassis Construction

- Cambered I-Beam Steel Chassis w/Steel Outriggers
- Battery Rack
- Electric Brakes at All Wheels
- Black Rotocast Wheel Wells (Most Models)
- Safety Chains & Breakaway Safety Switch
- E-Z Lube Hubs on Axles
- Four Stabilizer Jacks

#### Floor Construction

- 5/8" Tongue & Groove Floor Decking
- Tightly Sealed Woven Polyethylene Underbelly

### Features

- Two 30 lb. LP Propane Tanks w/Auto Changeover
- Holding Tanks w/Drain Outlet
- Rear Bumper w/Sewer Hose Carrier
- Water Heater Bypass

### Security & Safety

- Smoke Detector
- Propane Leak Detectors
- Carbon Monoxide Alarm
- Flush Door Latch w/Integral Dead Bolt Lock
- Fire Extinguisher

### Popular Options

- Power Side Awning
- Aluminum Wheels
- Camp Kitchen (Select Models)
- Fireplace (Select Models)
- Night Shades
- Outside Shower
- Power Stabilizer Jacks
- 26" LCD TV
- Gas/Electric/DSI Water Heater

### NO-NONSENSE WARRANTY

Manufacturing defects reported to Skyline within one year after original retail delivery of your new Travel Trailer by an authorized dealer will be corrected without charge and within reasonable times. Excluded are misuse (including lack of reasonable maintenance), minor imperfections, alterations, and dealer or owner improper transportation, installation, or hookup.

This warranty gives you specific legal rights. You may have other rights which vary from state to state.

Skyline's suppliers often provide additional warranties on their components beyond the Skyline factory bumper-to-bumper warranty. For example—the range, water heater, furnace, convertor, air conditioner, refrigerator, microwave and awning carry two-year supplier warranties. The one-piece roof carries a 12-year warranty. Ask your dealer for full details.

**Manufacturer's Notice:** All specifications, equipment, and prices are subject to change without prior notice. Production of all models subject to seasonal scheduling. Skyline Corporation reserves the right to improve a model without incorporating these changes in similar models produced at an earlier date.

Consult your automobile dealer and your recreational vehicle dealer to assure the proper match between tow vehicle and trailer. Tow vehicle and recreational unit must be properly equalized for efficient product performance and safety. Before you purchase your recreational vehicle, carefully consider the number of people it will accommodate and its end use. Manufacturer's load capacity restrictions and recommendations must be followed for safe and efficient product performance.

Your Retailer, an independent contractor, who is not an agent of Skyline Corporation, is the party responsible for your purchase contract and any additions, deletions, alterations, or attachments made to or in your recreational vehicle.



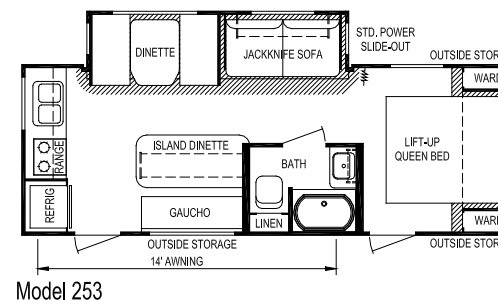
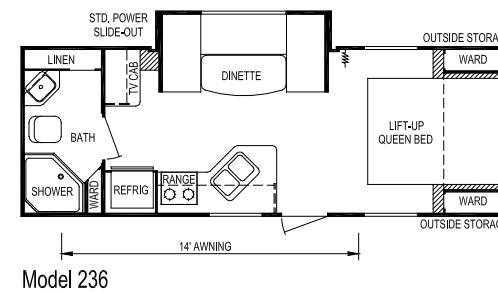
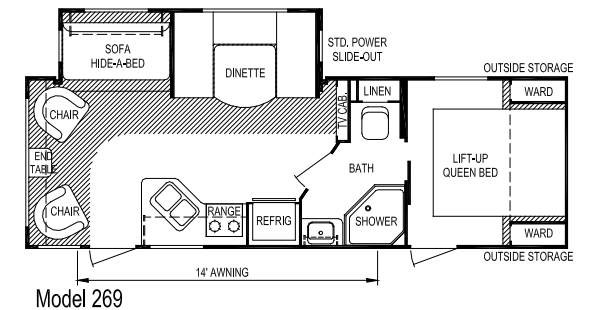
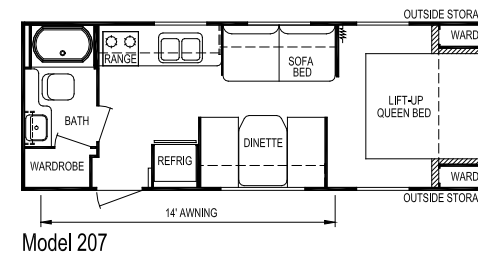
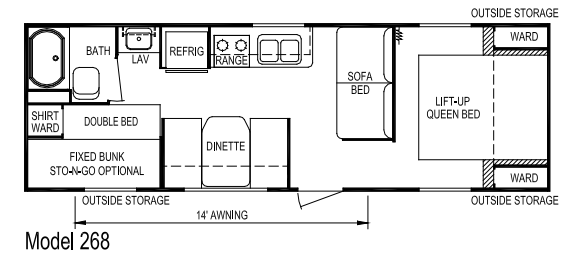
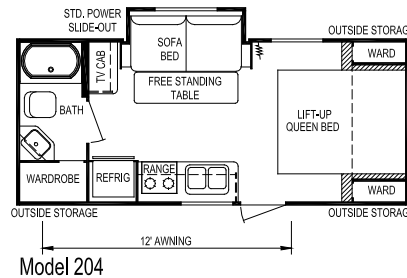
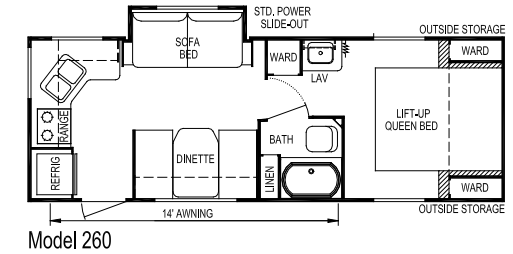
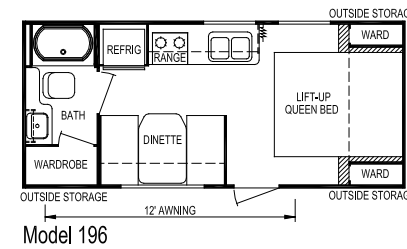
# SKYLINE

BRINGING AMERICA HOME. BRINGING AMERICA FUN.

For the name of your nearest Skyline-built RV dealer, call: Mansfield, TX 1-800-962-7773

Or visit us at our Web Site at [www.skylinecorp.com](http://www.skylinecorp.com)

## 2013 Travel Trailers



Your local *Layton Select* dealer is.

# SKYLINE

BRINGING AMERICA HOME. BRINGING AMERICA FUN.

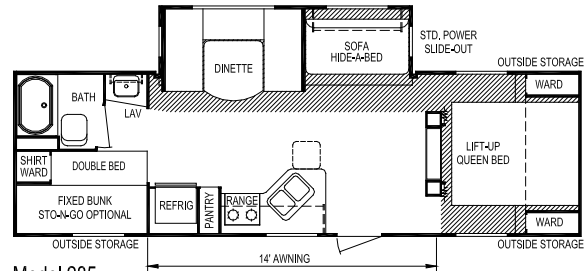
Effective February 2012

Go RVing.

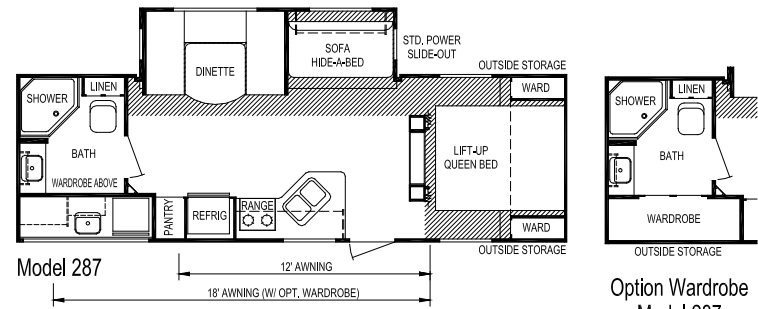


# Layton Select

## 2013 Travel Trailers

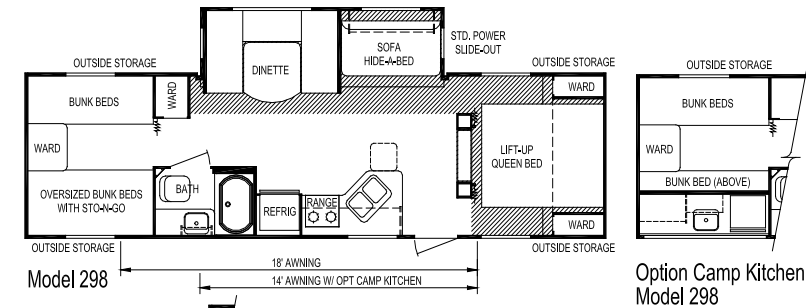


Model 285



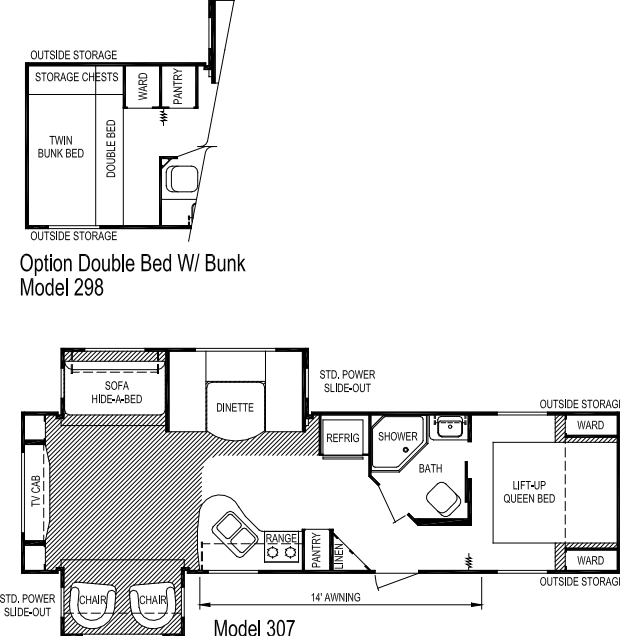
Model 287

Option Wardrobe Model 287

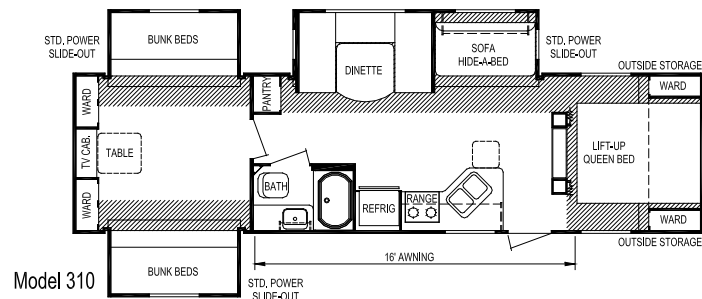


Model 298

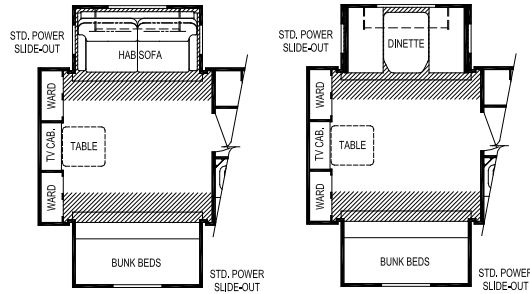
Option Camp Kitchen Model 298



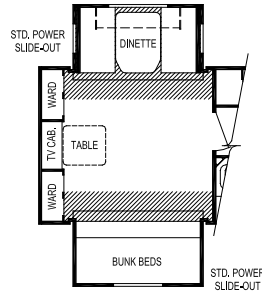
Model 307



Model 310



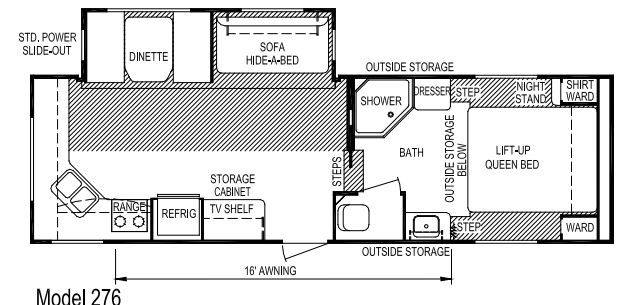
Opt. Rear Sofa (Model 310)



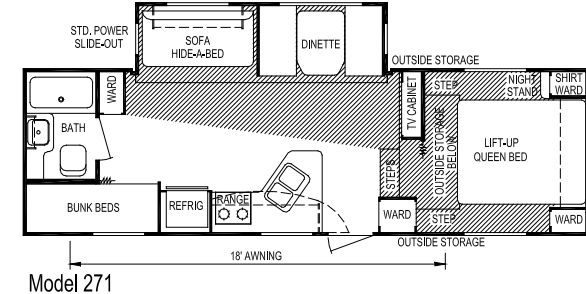
Opt. Rear Dinette (Model 310)

# Layton Select

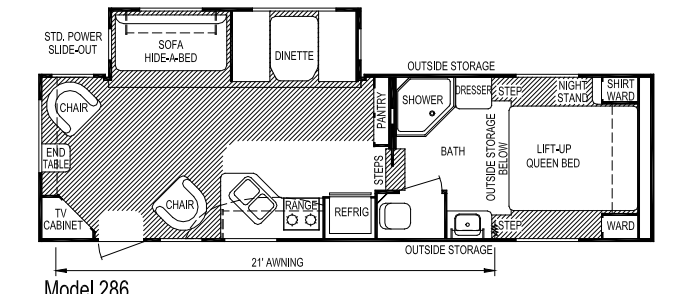
## 2013 Fifth Wheels



Model 276



Model 271



Model 286

### Select Travel Trailers

### Select Fifth Wheels

Model	196	204	207	236	253	260	268	269	285	287	298	307	310	271	276	286
<b>Weights</b>	Unloaded Vehicle Weight (see Note 2)															
	3,775	4,050	4,375	4,650	6,225	4,725	4,625	6,125	6,050	6,500	6,575	7,250	8,175	6,900	6,675	7,350
	Dry Hitch Weight															
	425	400	500	525	650	600	500	700	700	725	875	725	850	1,500	1,450	1,575
	Dry Axle Weight															
	3,350	3,650	3,875	4,125	5,575	4,125	4,125	5,425	5,350	5,775	5,700	6,525	7,325	5,400	5,225	5,775
	GVWR (Total Capacity of Trailer)															
	5,600	5,600	6,200	6,200	7,750	6,200	6,200	7,750	7,750	7,750	11,200	11,200	11,200	9,600	9,600	9,600
	Carrying Capacity (see Note 2)															
	1,650	1,350	1,625	1,350	1,275	1,275	1,375	1,375	1,450	1,000	4,350	3,675	2,725	2,425	2,675	1,975
<b>Accommodations</b>	Sleeping (standard / optional)															
	4	4	6	4	6	6	8	6	9	6	9 / 10	6	9 / 10	8	6	6
	Bed Size (standard)															
	60" x 74"	60" x 74"	60" x 74"	60" x 74"	60" x 74"	60" x 74"	60" x 74"	60" x 74"	60" x 74"	60" x 74"	60" x 74"	60" x 74"	60" x 74"	60" x 74"	60" x 74"	60" x 74"
	Second Bed Size															
	N/A	N/A	N/A	N/A	N/A	N/A	48" x 74"	N/A	48" x 74"	N/A	(2) 28" x 76"	N/A	(2) 28" x 76"	(2) 28" x 76"	N/A	N/A
	Dinette Size															
	40" x 71"	N/A	40" x 71"	44" x 92"	40" x 71"	40" x 71"	40" x 71"	48" x 79"	48" x 79"	48" x 79"	48" x 79"	48" x 79"	48" x 79"	40" x 71"	40" x 71"	40" x 71"
	Sofa															
	N/A	42" x 64"	42" x 64"	N/A	42" x 64"	42" x 64"	42" x 64"	44" x 74"	44" x 74"	44" x 74"	44" x 74"	44" x 74"	44" x 74"	48" x 74"	48" x 74"	48" x 74"
<b>Measurements</b>	Exterior Length (see Note 3)															
	22'-10"	23'-4"	27'-0"	27'-1"	27'-10"	27'-8"	29'-7"	29'-9"	32'-0"	30'-9"	33'-10"	34'-2"	35'-11"	29'-3"	29'-3"	30'-11"
	Exterior Width (see Note 3)															
	96"	96"	96"	96"	96"	96"	96"	96"	96"	96"	96"	96"	96"	96"	96"	96"
	Exterior Height (see Note 3)															
	10'-1"	10'-1"	10'-1"	10'-2"	11'-0"	10'-1"	10'-1"	11'-0"	11'-0"	11'-0"	11'-0"	11'-0"	11'-4"	12'-1"	12'-1"	12'-1"
	Interior Height															
	78"	78"	78"	78"	78"	78"	78"	78"	78"	78"	78"	78"	78"	84"	84"	84"
<b>Capacities</b>	Fresh Water System (gallons)															
	36	36	36	36	36	36	36	36	36	36	36	36	36	46	46	46
	Gray Water Tank (gallons)															
	31	31	31	31	56	62	31	40	40	62	40	40	40	71	71	71
	Black Water Tank (gallons)															
	31	31	31	31	31	31	31	40	40	40	40	40	40	40	40	40
	Air Conditioner Size															
	13,500	13,500	13,500	13,500	13,500	13,500	13,500	13,500	13,500	13,500	13,500	13,500	13,500	13,500	13,500	13,500
	Awning Size															
	12'	12'	14'	14'	14'	14'	14'	14'	14'	12'	18'	14'	16'	18'	16'	21'
	Convertor Size (amps)															
	55	55	55	55	55	55	55	55	55	55	55	55	55	55	55	55
	Furnace Rating (Btu)															
	25,000	25,000	25,000	25,000	25,000	25,000	25,000	25,000	25,000	25,000	25,000	25,000	25,000	25,000	25,000	25,000
	Propane Gas Capacity (pounds)															
	60	60	60	60	60	60	60	60	60	60	60	60	60	60	60	60
	Tires															
	ST205/75R14-C	ST205/75R14-C	ST205/75R14-C	ST205/75R14-C	ST205/75R15-C	ST205/75R14-C	ST205/75R14-C	ST205/75R15-C	ST205/75R15-C	ST205/75R15-C	ST225/75R15-D	ST225/75R15-D	ST225/75R15-D	ST225/75R15-D	ST225/75R15-D	ST225/75R15-D
	Water Heater (gallons)															
	6	6	6	6	6	6	6	6	6	6	6	6	6	6	6	6

**Notes**

- (1) All weights, dimensions, and capacities shown are approximate values.
- (2) Unloaded vehicle weight and carrying capacity will vary depending upon optional equipment. Full propane tanks are factored into carrying capacity. Skyline weighs every unit at the factory. See trailer weight information label located inside the front entry door for specific unloaded vehicle weight and cargo carrying capacity.
- (3) Dimensions stated to industry standards. Exterior length includes approximately a four foot hitch on travel trailers. Exterior height includes air conditioner, if installed. Exterior width does not include the width of the awning, if installed.