

Creek Side



**Climate Designed
Travel Trailers**



"Where to Escape from the Everyday"

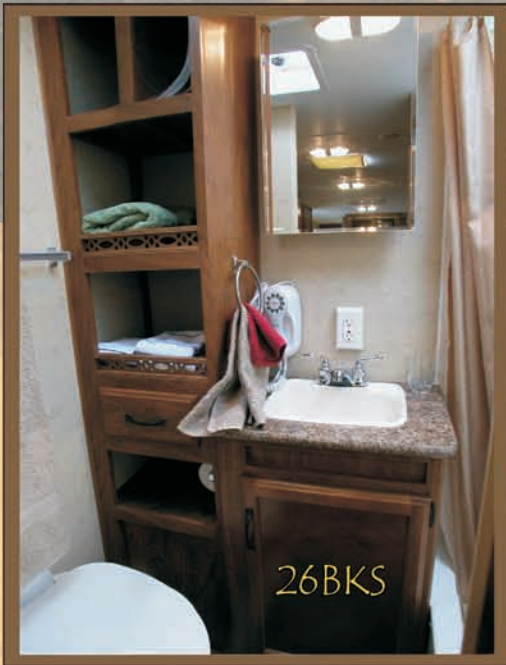
- *** Fiberglass Hardwall Construction -
Laminated HD Front Wall
- *** Adjustable Electric Awning w/ Rain Dump Arm
- *** Custom Built Cambered Off Road Chassis w/HD Shock Absorbers
- *** 15" Goodyear Radial Tires - Safety/Warranty
- *** Roto-Torqued Outdoors Tough Cabinetry
- *** Beaufloor Outdoors Tough Flooring
- *** Triple Layered Four Seasons Roof Insulation

"Welcome to the Outdoors"

OUTDOORS RV
MANUFACTURING

Creek Side

OUTDOORS RV
MANUFACTURING



26BKS

THE BATHROOM - Designed by true RV'ers...notice the built-in linen closet, medicine cabinet, and even a hair dryer like you see in many of today's hotels...our bathroom's even come with tile designed shower walls, thermal insulated skylights, and heat ducts for those chilly mornings...



23RKS

THE BEDROOM - In most models you will find two shirt wards, two plug-ins, and granite designed countertops on both sides of the bed...every customer will use these on each trip...eye glasses, cup of coffee, book, and the list goes on... add in the standard "Dream Soft" Pillow-Top Mattress and you will sleep like you did as a kid your first night out!



26RLS Cedar Grove Interior

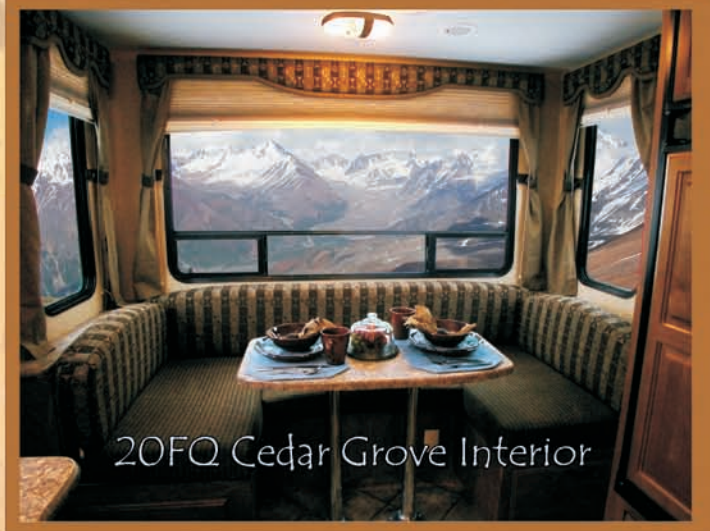
26RLS - Since we are active users of the products we produce here at Outdoors RV we know how important comfort is when out enjoying the "Outdoors". Three panoramic windows let all of Mother Nature in on this popular rear living room floorplan. Whether you are sitting on the comfortable sofa (notice the two built in drawers) or the two rear lounge chairs you will be saying to yourself, "Now this is roughing it!" The kitchen is a huge L-shape with a convenient flip-up counter extension, range cover, and two sink lids - an RV'er can never have enough counterspace. What a great place to cook a relaxing meal for the family.

Everyone deserves to enjoy the Outdoors with family & friends...

Take one look at the inside of the All New 2013CreekSide and you will see that this is the perfect place to "Escape from the Everyday". From the Mountain Alder interior to the stone diagonal flooring...the Outdoors never looked so good!



22RB Whispering Pines Interior



20FQ Cedar Grove Interior

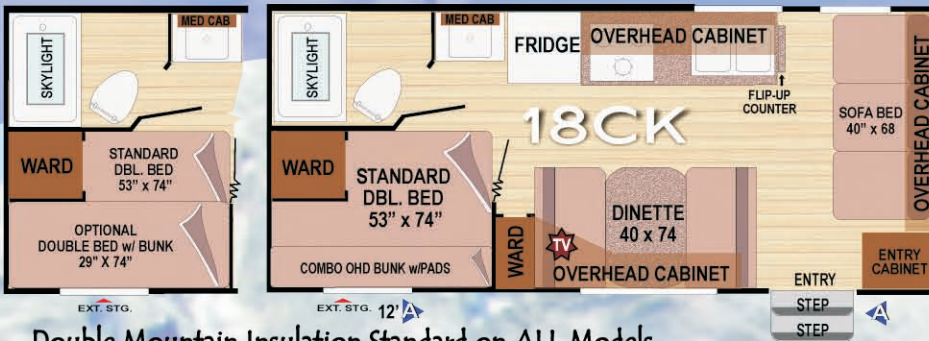
THE DINETTE - Can you believe this is a view from the wrap around U-shaped dinette of our 20FQ floorplan - this is one of our most popular models!! Notice the two-tone day & night shades and three panoramic wrap around windows - 5" dinette cushions (comfort is the key) and yes, do not forget the dinette construction - Outdoors RV utilizes plywood for the dinette seat construction - for added strength and durability for years to come.

THE KITCHEN - Large 22" range (select models), tile designed backsplash, knife rack, Larger Norcold 6.3 cu ft fridge with hardwood front panels, 3 XL full extension metal drawer guides, spice rack, rechargeable nightlight/flashlight and the list goes on...add in the standard flip up counter (NA 23RKS), two sink lids, range cover and you will find the counter space in all CreekSide's to be close to home so you can truly enjoy the Outdoors!



26BKS Whispering Pines Interior

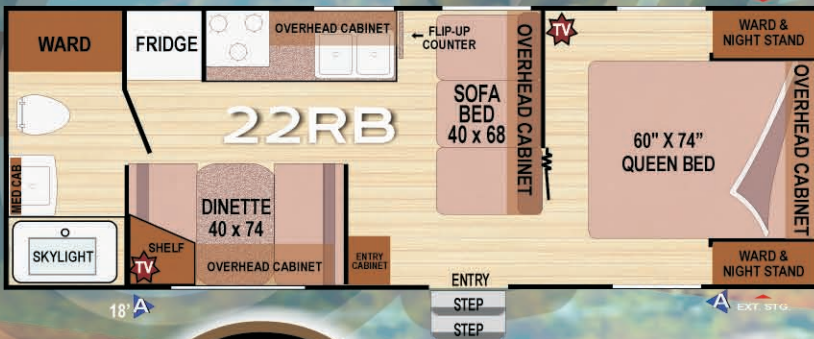
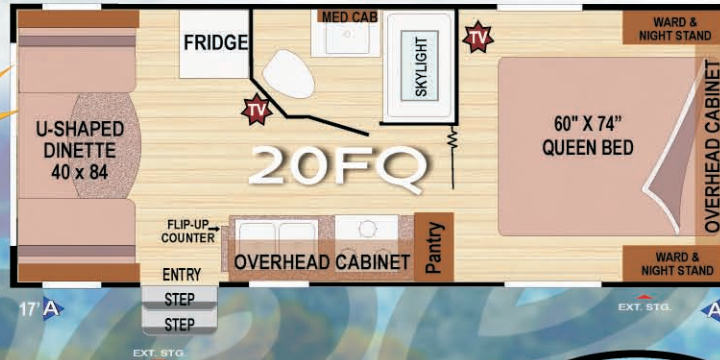
THE LIVING ROOM - This floorplan is our most popular bunk house model and you can see why...26" 12V LED swivel designed TV with HD DVD system, incredible counter space with the L-shaped galley, two full sized bunks, 45" x 84" Family Sized U-Shaped Dinette with rolling ottoman (you have to see this feature). The diagonal stone Beaufloor "Outdoors Tough" flooring is a standard feature in every CreekSide - not only does this flooring look great, it has a Cold Cracking Warranty for 2 Years down to 50 below zero.



2013 Floor Plans

Double Mountain Insulation Standard on ALL Models

New Floorplan



Creek Side



Dimensions & Capacities

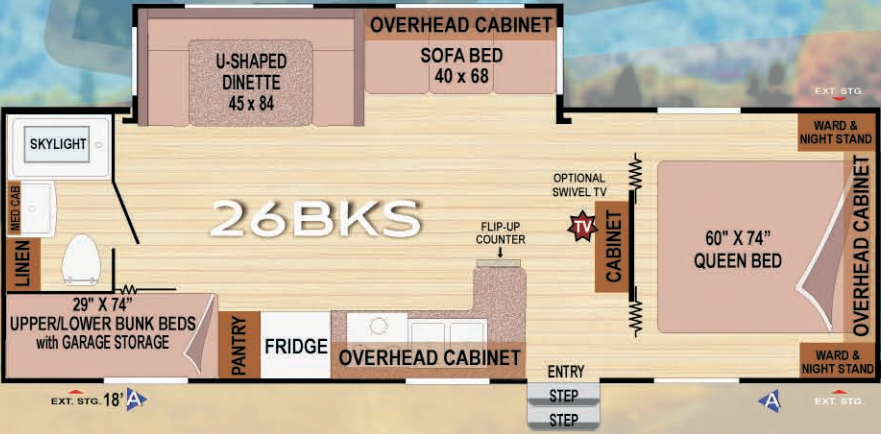
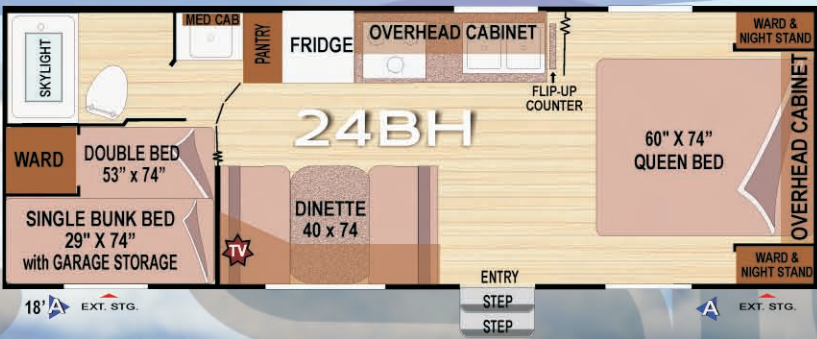
	18CK	20FQ	22RB	23RKS	24BH	26BKS	26RLS
Full Featured Dry Weight (lbs)	4200	4400	4600	6000	4600	6450	6450
Cargo Carrying Capacity (lbs)	1700	1800	1700	1700	1700	1750	1750
Hitch Dry Weight (lbs)	500	410	485	620	505	710	710
Maximum Trailer Weight (lbs)	5900	6200	6300	7700	6300	8200	8200
Length (including hitch)	22'3"	23'9"	26'3"	27'6"	26'8"	29'3"	29'1"
Height (including A/C)				10'11"		10'11"	10'11"
Height (not including A/C*)	9'6"	9'6"	9'6"		9'6"		
Fresh Water Holding Tank (gal)	66	66	66	66	61	66	66
Grey Water Holding Tank (gal)	40	40	40	40/40	40	40	40
Black Water Holding Tank (gal)	40	40	40	40	40	40	40
Propane Capacity (lbs)	60	60	60	60	60	60	60
Heavy Duty 5 Lug Axles (lbs)	3500 (2)	3500 (2)	3500(2)		3500 (2)		
Heavy Duty 6 Lug Axles (lbs)				5200 (2)		5200 (2)	5200 (2)
Goodyear Tire Size (load range)	ST205/ 75 15C	ST205/ 75 15C	ST205/ 75 15C	ST225/ 75 15D	ST205/ 75 15C	ST225/ 75 15D	ST225/ 75 15D

"Where to Escape from the Everyday"



Creek Side

Welcome to the Outdoors!



Indicates pre-wired locations where TV's can be installed.
 indicates full length power awning with rain dump arm.



Bathroom Design with Residential Walk-in Shower!

Entertainment Center / Swivel TV Design!



Creek Side



FOR MORE INFO
SCAN HERE

***All dry weights are calculated on full featured production units**

*Verify the towing capacity of your tow vehicle. If you don't know or aren't sure, you can ask your automotive dealership or contact your tow vehicle manufacturer.

*All weights above are average approximations and may vary. Weights are calculated before adding options.

*Specifications are subject to change without notice.

*Add 10" for A/C.

Standard

Interior – Throughout

- * Norcold 6.3 Cu Ft Fridge with Hardwood Front Panels
- * Eco Friendly Battery Disconnect
- * Beaufloor "Outdoors Tough" Flooring – 7 Layers – Cold Cracking to 50 Below Zero
- * Roto-torqued "Outdoors Tough" Real Wood Cabinetry (all face frame cabinets)
- * Dinette Drawer System (1 Drawer on 20FQ)
- * XL Full Extension Metal Drawer Guides (all drawers)
- * Two Tone Day / Night Shades – Living Room & Bedroom
- * Slide-Out Overhead Cabinets (where applicable)
- * Hardwood Slide-Out Corner Plinths
- * Slide-Out End Wall Windows (26BKS, 26RLS)
- * Comfort Style Furniture with Sofa Throw Pillows
- * Microwave, HD TV Ant, CD Player
- * Coleman 13.5 A/C (23RKS, 26BKS, 26RLS)
- * DSI Water Heater with Single Lever Bypass System
- * Forced Air-Direct Spark Ignition Furnace w/ Thermostat
- * Welcome to the Outdoors Entry Mat
- * Plywood Dinette Seat Construction
- * 5" Thick – High Density Foam Dinette Cushions

Galley

- * 22" Range (NA 18CK, 20FQ)
- * Knife Rack
- * Rechargeable Flashlight / Night-light
- * Granite Designed Counter-tops
- * Range Cover / Dual Sink Covers
- * Flip Up Counter Extension (where applicable)
- * Range Hood w/ 12V Light & Exhaust Fan
- * Hi-Rise Kitchen Faucet

Bedroom

- * "DreamSoft" Pillowtop Mattress
- * Bedroom Pillows
- * Strut-Assisted Lift-Up Bed Platform with Below Bed Storage (most models)
- * Plywood Bed Construction
- * Dual Night-Stands, Shirt Wards, and Plug-ins (where applicable)

Bath

- * Wall Mounted Hair Dryer
- * Porcelain Toilet
- * Residential Tile Design Tub Walls
- * Towel Bar(s)
- * Shower Skylight
- * Wall Switched Ceiling Light
- * Medicine Cabinet
- * Residential Walk-In Shower with Glass Enclosure (26RLS)
- * Heat Duct

Safety/Convenience

- * 26" Wide Main Entry Door w/ Window
- * 4-Wheel Electric Brakes
- * Break-Away Emergency Disconnect Brake
- * Carbon Monoxide Detector/Alarm
- * Fire Extinguisher
- * Flush Mount Entry Door Latch w/ Deadbolt Lock
- * Patio Light w/ Interior Switch
- * Propane Detector/Alarm
- * Retractable Entry Step with Non Skid Strip
- * Smoke Detector/Alarm

Exterior – Throughout

- * Eco Friendly Battery Saving Roof Mounted Solar Panel
- * "True Full Size Outdoor Style" BBQ Hookup Bib & Hose (BBQ sold separately)
- * Adjustable Pitch Electric Awning with Rain Dump Arm
- * 1 1/2" Fresh Water Quick Drain
- * Front Hitch Light
- * Nut Driven Scissor Jacks (all 4 corners)
- * Dual 30# LP Tanks with Easy Access Flip-Top Cover
- * Cooler Sized Luggage Compartment Doors (where applicable)
- * Black Flush Tank
- * Exterior Shower
- * Tinted Windows
- * Radius Smooth Fiberglass Entry Doors
- * Slam Latch Radius Smooth Fiberglass Luggage Doors
- * Bunk Garage Door (24BH, 26BKS)
- * Front Window (18CK)

Outdoors "Built Tough Construction"

- * Fiberglass Hardwall Construction - Laminated HD Front Wall
- * Off Road Extra Tall Front Diamond Plate Protection
- * Plywood - Dinette Construction -40% Thicker Cushions

Outdoors "Off Road Tough" Package

- * Custom Built Cambered Off Road Chassis - HD Shock Absorbers
- * Rugged A-Frame - Protected Junction Bow Wiring
- * Diamond Plate Wrap Bumper
- * Heavy Duty 5 Lug 3500 LB Axles with Off Road Brake System (Non Slide-Out Models)
- * Heavy Duty 6 Lug 5200 LB Axles with Off Road Brake System (Slide Out Models)
- * Off Road High Impact Wheel Skirts - Mud Flaps
- * Laminated Fiberglass Slide-Out Floor (Slide-Out Models)
- * Beaufloor "Outdoor Tough" Flooring - 7 Layers - Cold Cracking Warranty to -50

*Roto-Torqued Outdoors Tough Real Wood Cabinetry (all cabinets)

*15" GoodYear Radial Trailer Approved Tires Safety/Warranty (Heavy Ply D Range - Slide Out Models)

*15" GoodYear Spare Radial Trailer Approved Tire with Carrier (Heavy Duty D Range - Slide Out Models)

*Metal Entry Door & Luggage Door Catches

*Off Road Clearance Lights


*Radius Crowned Full Walk On Roof with *Ladder (Ladder NA on 20FQ)

Options

*19" LED HD 12V TV with DVD System (18CK, 20FQ, 22RB, 24BH)

*26" LED HD 12V TV with DVD System (23RKS)

*26" Swivel LED HD 12V TV with DVD System (26BKS, 26RLS)

*CSA - 

*LP/110V Water Heater

*12V Heat Pad - Fresh Water Tank (23RKS, 26BKS, 26RLS)

*Power Package: Power Tongue Jack, Power Stab Jacks



*Eco-Friendly" Tankless Water Heater, LED Interior & LED Exterior Lights.



Thermal Pane Windows

**Mountain Extreme" Thermal Pane Windows

*Bike Rack Receiver Hitch

*Keyless Entry with Touchpad

*Sofa Bed Drawers (23RKS, 26BKS, 26RLS)

*Eco-Camping 95 Watt Solar Panel System



*Double Bed with Bunk & Window (18CK)

*Combo Overhead Bunk Cabinet with Pads & Window (18CK)

*Outdoors RV Spare Tire Cover

*Tankless Water Heater

*Interior/Exterior LED Lights

Welcome to the Outdoors

23RKS, 26BKS, 26RLS



Outdoors "Climate Designed Four Seasons" Package

Climate Designed Travel Trailers



Triple Layered Four Seasons Roof Insulation



Fully Enclosed Front to Back Heated Insulated Underbelly Double Mountain Floor Insulation



1" Thick Thermal Insulated Luggage Door Compartments



Insulated Snap Cover for Select Roof Vents (model specific)



Exterior Shower Insulated by 1" Thick Thermal Insulated Luggage Door



15% Larger XL Furnace (Extreme Camping Heat System)



Climate Designed - Four Seasons Camping Designed for Mountain States & Western Canada

R-15 Astro-Foil Roof, Slide-Out Floor, Entire Underbelly, Additional Wrap Around Holding Tanks

The Outdoors RV Standard:

18CK, 20FQ, 22RB, 24BH

X Fully Enclosed Holding Tanks

X Astro-foil Reflective Blanket Insulation

X Mountain Insulation Package

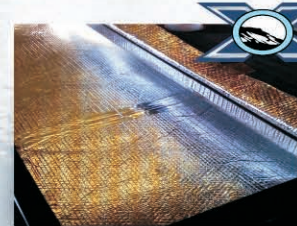
X Winterization Package



The Outdoors RV Standard: Triple Layered Four Seasons Roof Insulation



The Outdoors RV Standard: Our Dump Valves are located within the Enclosed / Heated underbelly to protect them from freezing.



We use Astro-foil (R-15) insulation underneath the entire length of the grey/black water tanks! Plus an additional wrap around the holding tanks themselves.

The Ultimate Outdoors Camping



The Outdoors RV Standard: Mountain Insulation is Double Layered for Added Protection.



The Outdoors RV Standard: 15% Larger XL Furnace (Extreme Camping Heat System)



The Outdoors RV Standard: Exterior Shower Insulated by 1" Thick Thermal Insulated Luggage Door Compartments.

The Outdoors RV Standard: Warm in the Winter and Cool in the Summer, Perfect for colder Northern US and Canadian climates.

Creek Side



Outdoors RV Manufacturing is located in a picturesque mountain valley of Eastern Oregon. The focus of this company is to design RV's for the NW and Western Canada and merchandise the products through a hand selected group of dealers with the end goal of having our customers enjoy an Outdoor experience like no other.

The NW and Western Canada will be the targeted area for the products produced here. This area has an incredible percentage of people that enjoy the RV lifestyle and why wouldn't they with the Outdoors right outside most people's backdoor. Our goal is not to be the largest manufacturer in the country nor follow market share graphs. We simply want to design and build great RV's.

Here at Outdoors RV the management team has over 260 years of combined RV experience. A few examples:

Creek Side



FOR MORE INFO
SCAN HERE

Jim Croxton - General Manager (28 Years)
Darin Nelson - Sales Manager (19 Years)
Rod Glass - Canadian Sales Manager (26 Years)
Robin Larsen - Canadian Training/Sales (21 Years)
Troy Johnson/Brad Croxton - US Sales (12 Years Combined)
Rick Ewing - Service Manager (33 Years)
Darren Moschkau - Production Manager (32 Years)
Rick Hudson - Asst Production Manager (28 Years)
Karen Evans - Sales Administrator (10 Years)
Paul Christensen - Purchasing Manager (36 Years)
James Baker - Product Development (23 Years)

2011 WINNER!



We look forward to producing an excellent product for you and your family to use in the Outdoors - please feel free to visit us anytime - we would love to meet you!

Your Local Outdoors RV Dealer is:



PO BOX 1047 Phone 541.624.5500
62582 Pierce Road Fax 541.963.2448
La Grande, OR 97850 www.outdoorsrvmfg.com