

# TIOGA MONTARA® 2013

CLASS C GAS |  FLEETWOOD RV

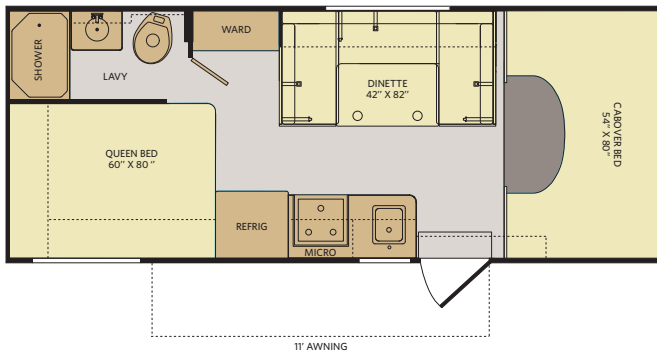


Standard

## TOP FEATURES

- Hardwood Cabinet Doors
- High-Gloss Smooth Fiberglass Exterior
- One-Piece Molded Fiberglass Front End Cap
- Full Basement Exterior
- Pass-Through Storage
- PEX Plumbing System
- Custom Vacuum-Formed Countertops

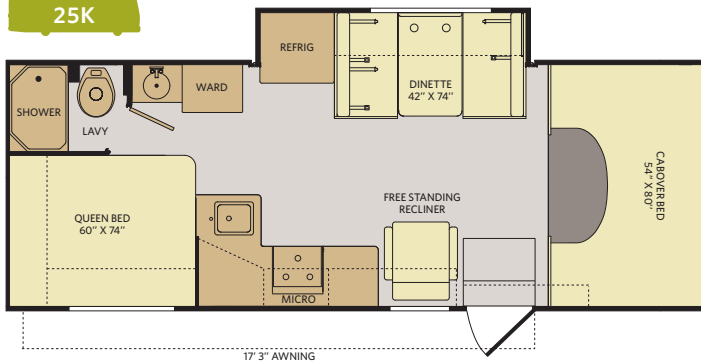
### 23B



INTERIOR STORAGE CAPACITY: 74 CU. FT.  
EXTERIOR STORAGE CAPACITY: 27 CU. FT.

Available options: 160

### 25K



INTERIOR STORAGE CAPACITY: 79 CU. FT.  
EXTERIOR STORAGE CAPACITY: 88 CU. FT.

Available options: 078, 113, 160

### OPTIONS

 OPT. 078  
19" LCD TV

 OPT. 113  
3-BURNER  
RANGE  
W/OVEN

 OPT. 160  
FRONT 26"  
LCD TV

## WEIGHTS & MEASUREMENTS

CHASSIS	FORD® E350	E350/E450
<b>MODELS</b>	<b>23B</b>	<b>25K</b>
Engine Displacement (liters)	5.4	5.4/6.8
Wheelbase (inches)	158"	176"
GVWR (lbs) <sup>1</sup>	12,500	12,500/14,500
Front GAWR (lbs) <sup>2</sup>	5,000	5,000
Rear GAWR (lbs) <sup>2</sup>	8,500	8,500/9,500
GCWR (lbs) <sup>3</sup>	17,500	17,500/19,500
Hitch Rating Weight (lbs) <sup>4</sup>	5,000	5,000
Tongue Weight (lbs) <sup>4</sup>	500	500
Fuel Capacity (gal)	40	40/55

### FORD® CHASSIS

**Model:** Ford® E350 (23B)/E450 (25K)  
**Engine:** 5.4L V8 (E350)/6.8L Triton V10 (E450)  
**Transmission:** 5-Speed Automatic w/Overdrive

**Alternator:** 120 Amp  
**Torque:** 350 lb-ft @3,250 RPM (E350)/  
 420 lb-ft @3,250 RPM (E450)  
**Horsepower:** 255HP (E350)/305HP (E450)

### DIMENSIONS & CAPACITIES

MODELS	23B	25K
Overall Length <sup>4</sup>	24' 4.5"	26' 2.5"
Overall Height (with A/C)	11' 6"	11' 6"
Overall Width (maximum) <sup>5,6</sup>	102"	102"
Interior Height (maximum)	82"	82"
Interior Width (maximum)	96"	96"
Fresh Water Holding Tank (gal)	50	50
Grey Water Holding Tank (gal)	36	37
Black Water Holding Tank (gal)	36	36
Appliance Propane Tank (gal) (WC) <sup>7</sup>	14	14
Water Heater Tank (gal)	6	6

#### Liquid Weight Reference:

Water (gal) = (8.3 lbs/3.8 kgs) Fuel (gal) = (6.1 lbs/2.8 kgs) Propane (gal) = (4.2 lbs/1.9 kgs)

#### Metric Conversion:

Multiply pounds x 0.453 to obtain kilograms. Multiply gallons x 3.785 to obtain liters.  
 Multiply liters x 61 to obtain cubic inches.



**CONFIGURE A COACH THE WAY YOU WANT!**

COLORS • FLOOR PLANS • OPTIONS • DÉCOR

[www.FLEETWOODRV.COM](http://www.FLEETWOODRV.COM)



FLEETWOOD RV IS AN ALLIED SPECIALTY VEHICLE COMPANY.

#### Addendums

- GVWR (Gross Vehicle Weight Rating) is the maximum permissible weight of this fully loaded motor home. The GVWR is equal to or greater than the sum of the (UVW) unloaded vehicle weight plus the (OCCC) occupant cargo-carrying capacity\*.
- GAWR (Gross Axle Weight Rating) is the maximum permissible loaded weight a specific axle is designed to carry.
- GCWR (Gross Combined Weight Rating) is the value specified by the motor home manufacturer as the maximum allowable loaded weight of this motor home with its towed vehicle. Towing and braking capacities may be different. Refer to Fleetwood and chassis manufacturer's manuals for complete information.
- Length measured from front bumper to rear bumper (excludes accessories).
- Excludes safety equipment and awnings.
- Motor homes feature a body width over 96" which will restrict your access to certain roads. Before purchasing, you should research any state and/or province road laws which may affect your usage.
- Tank manufacturer's listed water capacity (WC). Actual propane capacity is 80% of water listing as required by the safety code.

† The chassis manufacturer recommends the installation of a supplemental brake control system to activate the brakes on the vehicle or trailer you are towing. Hitch receiver ratings expressed are maximum for the hitch receiver installed and may require the purchase of additional equipment that is dependent on the weight of the towed load. Consult with hitch receiver manufacturer for further information.

\* UVW and OCCC are found on the label containing the federal certification tag in each RV.

†† The Minimum Towable Load of this vehicle is the available weight capacity, up to GCWR, when the coach is fully loaded to maximum GVWR. However, if the coach is loaded to something less than maximum GVWR, that extra available weight capacity can be added to your Towable Load. For example, if your coach is loaded to 1000lbs less than maximum GVWR, your Towable Load increases accordingly. Do not exceed the hitch rating weight, GVWR or GCWR.

#### IMPORTANT—PLEASE READ

Product information, photography and illustrations included in this publication were as accurate as possible at the time of printing. For further product information and changes, please visit our website at [www.fleetwoodrv.com](http://www.fleetwoodrv.com) or contact your local Fleetwood RV dealer. Prices, materials, design and specifications are subject to change without notice. All weights, fuel, liquid capacities and dimensions are approximate. Fleetwood RV has designed its recreational vehicles to provide a variety of uses for customers. Each vehicle features optimal seating, sleeping, storage and fluid capacities. The user is responsible for selecting the proper combination of loads (i.e., occupants, equipment, fluids, cargo, etc.) to ensure that the vehicle's capacities are not exceeded.

#### CONTACT US

To locate a dealer near you, visit our website at [www.fleetwoodrv.com](http://www.fleetwoodrv.com) or call 1-800-322-8216. We can also be contacted at Fleetwood RV Customer Relations, P.O. Box 1007, Decatur, IN 46733.



\*\* All 2013 Fleetwood RV motorhomes include a 1-year emergency roadside assistance membership. For complete info, see your Fleetwood RV dealer.

©2012 Fleetwood RV Inc. Printed in USA. Inventory Control Number TIM13F1, 04/12. Model Year 2013, First Edition.