

FLEETWOOD RV

2013 CLASS A DIESEL

PROVIDENCE®

# PROVIDENCE®



## THE LUXURY OF HOME

Surround yourself with luxurious details. Providence gives you all the comforts of home, meticulously crafted to your tastes—so you never have to stop living stylishly. No matter where Providence takes you, you'll always be enveloped in luxury.





## WHY BUY PROVIDENCE?

**Impressive Exterior** Providence makes a striking first impression with its commanding size, sparkling paint and obvious attention to detail.

**Cummins® 450HP Diesel Engine** As one of the finest performing diesel engines in the world, the Cummins® ISL 8.9L ISL engine provides mighty power underfoot.

**Sophisticated Décor** Travel surrounded by sumptuous elegance, where everything delights the eye. Providence elevates adventure to a new level of luxury.

**Top-of-the-Line Components** Providence is equipped with high-end brand names that carry the prestige and quality you expect. The appliances, electronics and furnishings are top-notch.

**Upscale Conveniences** To make life more comfortable, Providence contains step-saving features at every turn. It's as if we anticipated your every need.



# 2013 GRAPHICS AND DÉCOR

## PROVIDENCE

Both inside and out, we offer a wide selection of colors, styles and finishes. From the moment you lay your eyes on a Fleetwood RV, the high-style graphics and décor collection welcome you with gracious beauty and contemporary design. We've paid attention to every detail. So wherever you are, you'll feel right at home.



BLACK GOLD



AUTUMN GROVE



ARTISAN STONE



ARTISAN SPICE



MOJAVE TRAIL

	CHOCOLATE BISQUE	MAPLE SYRUP	SILVER LINEN		CABINETRY
SOFA				BROWN SUGAR	
ACCENT					
BEDSPREAD					
COUNTERTOP				WARM HONEY	
FLOORING					
CARPET					

# STANDARD FEATURES AND OPTIONS

## STANDARD FEATURES

### INTERIOR THROUGHOUT

- Aqua-Hot® Heating System 50,000 BTU (House & Water)
- 84" Interior Ceiling Height
- Complete PEX Plumbing System
- Crown Molding w/Decorative Corner Caps
- Manual Double Roller Shades
- Deluxe Roller Bearing, Full-Extension Drawer Guides & Transit-Ship Locks
- Demand Water Pump w/Filter
- 3 Roof-Mounted, High-Efficiency A/Cs
- Solid Wood Face Frame Cabinets
- Hardwood Cabinet Doors/Drawers
- Solid-Surface Countertops and Sink Covers
- Vinyl Padded Ceiling
- Wall Switches (Includes Switches for Ceiling Lights & Vents)
- Water Heater Bypass
- Whole Coach Water Filtration System
- Central Vacuum System
- Stackable Washer & Dryer

### DRIVER CONVENIENCE

- Adjustable 3-Point Seatbelts at Driver & Front Passenger Seats (w/ Adjustable Shoulder Straps)
- Sony® AM/FM/CD/Navigation Dash Radio
- Color Back-Up Monitor w/Side Cameras Integrated in Mirrors
- Auxiliary Start Circuit
- Backlit Switches & Gauges
- Battery Disconnect System
- Cruise Control
- Driver/Passenger Powered Side Shades
- Driver/Front Passenger Ultraleather™ Captain's Chairs w/Reclining Back/Slide Controls/Power/Heated/Adjustable Arms
- Denso® High-Output Auto A/C Heater Combo
- Passenger Armrest w/Integrated Magazine Rack
- Passenger Seat Power Footrest & Adjustable Arm
- Power Driver/Front Passenger Sun Visors
- Radio Switch Main/Auxiliary Power
- Soft-Surface Automotive Dash
- Smart Wheel with Tilt/Telescoping Steering Wheel
- Power Entry Step Cover
- 110-Volt Power Outlet at Dash
- 2 12-Volt Power Outlets at Dash

### GALLEY

- 1.7 cu.ft. Convection Microwave Oven w/Stainless Steel Front
- Dometic® 12 cu.ft. 4-Door Stainless Steel Refrigerator w/Icemaker and Water Dispenser
- 2-Burner, High-Output Electric Flat Panel Cooktop
- Adjustable Cabinet Shelves (Select Cabinets)
- Fan-Tastic® Power Roof Vent w/Wall Switch
- Polished Porcelain Tile with Deco Inserts
- Large, Double Solid-Surface Sink
- Moen® Single-Lever Galley Faucet w/Pullout Sprayer
- Under-Galley Shelving & Wastebasket

### LIVING ROOM

- Sony® 40" LCD HDTV Midship
- DSS Mobile Auto Tracking
- Sony® DVD Home Theater Sound System w/Hidden Surround Sound Speakers
- Polished Porcelain Tile with Deco Inserts
- Comfort Fit by Villa® Residential Seat Styling
- TV Antenna
- Ultraleather™ Sofa Bed (Select Models)
- Ultraleather™ Sofa Sleeper (Select Models)
- Ultraleather™ Love Seat (Select Models)

### BEDROOM

- Bedspread w/Décor Pillows
- Cabinet Storage Above the Bed
- Coffered Ceiling
- Mirrored Wardrobe Doors
- Remote Generator Start Switch
- Queen Bed Air Mattress
- Rear Wardrobe w/Cedar Lining, Carpeted Floor & Wire Organizer
- Wardrobe Lighting
- Bedroom Entertainment Center w/Sony® 32" LCD HDTV

### BATHROOM

- Cabinet Toe Kicks
- Fan-Tastic® Power Roof Vent w/Wall Switch
- Hardwood Bath Door/Trims
- Molded Shower Enclosure w/Skylight
- Porcelain Toilet w/Water Saver
- Solid-Surface Sink
- Halogen Light Over Sink

### SAFETY/CONVENIENCE (INTERIOR)

- Carbon Monoxide Detector/Alarm
- Energy Management System (EMS) w/Soft Start
- Fire Extinguisher
- Multiple Seatbelt Locations
- Propane Detector/Alarm
- Smoke Detector/Alarm
- Neutral Loss Protection

### EXTERIOR THROUGHOUT

- Entertainment Center w/Sony® 32" LCD HDTV & AM/FM/CD/DVD Radio
- 120V/12V AC/DC Converter
- 2,000-Watt Pure Sine Wave Inverter w/Remote
- 4-Point Automatic Levelers
- 50-Amp Service
- 8.0 kW Onan® Quiet Diesel Generator
- Awning Rail/Drip Molding (Both Sides)
- Dual-Pane Windows w/Screens
- Molded Fiberglass Roof
- Fiberglass Front Quarter Panels
- Fiberglass Front/Rear Caps w/High Mounted Taillights
- Fiberglass Wheel Well Trims
- Full-Body Paint
- Remote/Heated Rear-View Mirrors
- Utility Compartment w/Exterior Shower
- Water Pump Switch (Multiple Locations)
- Weather Pro Power Awnings (Patio Awning Includes Wind Sensor)
- Front & Mid-Coach Docking Lights
- Generator Manual Slide Out

### AUTOMOTIVE

- Aluminum Wheels
- Fog Lamps
- Large One-Piece Bonded-in Windshield
- Mud Flaps
- Color Rear & Side-View Cameras
- Windshield Wipers w/Wet Arm
- Tire Valve Extenders
- Underhood Utility Light
- Diamond Shield Clear Front Protective Mask
- Heated Chrome Power Exterior Mirrors w/Turn Signals & Sideview Cameras

### SAFETY/CONVENIENCE (EXTERIOR)

- Automatic Generator Start System
- ABS Air Brakes
- 20' Sewer Hose
- Automotive Safety Glass
- Central Electrical Panel
- Daytime Running Lights
- Doorside Patio Receptacle
- Easy Sweep Flooring at Entry Step
- Entry Door w/Screen Door & Deadbolt Lock
- Four 6V/Deep-Cycle House Batteries
- Keyless Entry Remote
- Lighted Entry Assist Handle
- Park Cable Receptacle
- Porch Light
- Power Entry Step
- Rear Side Marker Lights
- Remote/Heated Rear-View Mirrors
- Roof Ladder
- Black Tank San-T-Flush™ System
- Touch Sensor Tank Monitoring System
- Utility Compartment w/Exterior Shower

### STORAGE

- Continuous One-Piece Compartment Bulb Seal
- Hidden, Stainless Steel Latch Rods
- Insulated Aluminum Luggage Doors w/Single Paddle Metal Latches & Stainless Steel Hinges
- Lighted Luggage Compartments
- Pass-Through Storage
- Side Swinging Luggage Doors

### BODY STRUCTURE

- Aluminum Interlocking Floor/Wall/Ceiling Framing
- Heated Water & Holding Tank Compartments
- Molded Fiberglass Radius Roof w/Ducted A/C
- Vacu-Bond® Upper/Lower Floors
- Power Bridge® II Chassis (Fleetwood Exclusive)

## OPTIONS

### INTERIOR

- CSA Package (Canadian Specs)\*\*

### GALLEY

- 22 cu.ft. Residential Refrigerator w/Two Additional Batteries & 2800 watt Inverter
- Dishwasher

### LIVING ROOM

- Sony® 32" LCD HDTV in Front Overhead
- Ultraleather™ U-Shaped Dinette/Sofa (42M)
- Ultraleather™ U-Shaped Dinette/Recliner (42P)
- Facing Dinette

### BEDROOM

- Queen Bed with Memory Foam Mattress
- King Bed with Memory Foam Mattress
- King Adjustable Air Mattress

### EXTERIOR

- Exterior Grill and Kitchenette
- Window Awning Package
- 1st Full Bay 90" Slide Tray
- 1st Full Bay 36"/54" Slide Trays
- 2nd Full Bay 90" Slide Tray
- 2nd Full Bay 36"/54" Slide Trays

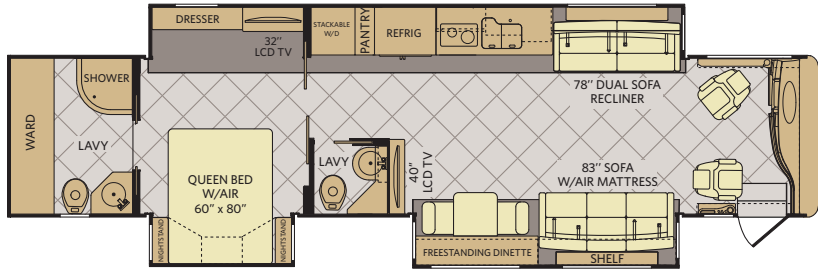
## FLEETWOOD ADVANTAGES

- Vacu-Bond® Walls w/Smooth High-Gloss Exterior Fiberglass
- Power Bridge® II Chassis Construction (Fleetwood RV Exclusive)
- Large One-Piece Bonded-in Windshield
- Pass-Through Storage
- Side Swinging Luggage Doors (Select Doors)
- Sony® LCD HDTVs
- Sony® Surround Sound DVD/AM/FM System
- Deluxe Roller Bearing, Full-Extension Drawer Guides
- 84" Interior Ceiling Height
- Full-Wall Slide Technology
- 50-Amp Energy Management System That Monitors Both Legs of Power
- Single, Digital, LED Extend Retract Switch That Combines Five (5) Functions Including: Awnings, Step Well Cover & Slide-Out Functions, Into One (1) Easily-accessible Control
- 110AC Outlet in Dash Area

\*\*CSA Standards may require substitution or deletion to achieve conformance

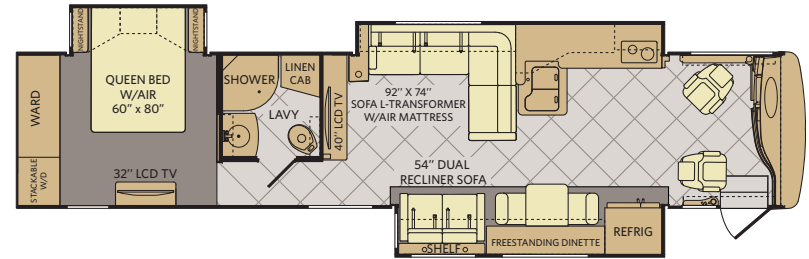
# FLOOR PLANS

42M



INTERIOR STORAGE CAPACITY: 207 CU. FT. EXTERIOR STORAGE CAPACITY: 188 CU. FT. Available options: 087, 107, 144, 635, 830, 853, 854, 856

42P



INTERIOR STORAGE CAPACITY: 200 CU. FT. EXTERIOR STORAGE CAPACITY: 188 CU. FT. Available options: 087, 107, 139, 144, 630, 830, 853, 854, 856

## PROVIDENCE FEATURES

LUXURY



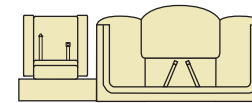
High-Gloss Procelain Tile Flooring With Decorative Tile Inserts and Mosaic Blacksplash.

COMFORT



Come in and enjoy the best seats in the best seats in the house. Every piece of furniture is crafted with comfort, livability and you in mind.

## FLOOR PLAN OPTIONS



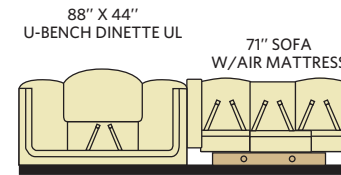
OPT. 630 U-SHAPED DINETTE / RECLINER



OPT. 087 FRONT 32\"/>



OPT. 107 DISHWASHER



88\"/>

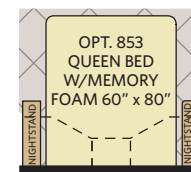


OPT. 139 LIVING ROOM FIREPLACE

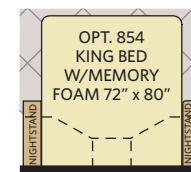


OPT. 144 RESIDENTIAL REFRIG

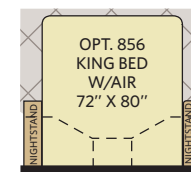
OPT. 635 U-SHAPED DINETTE / SOFA



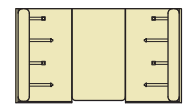
OPT. 853 QUEEN BED W/MEMORY FOAM 60\"/>



OPT. 854 KING BED W/MEMORY FOAM 72\"/>



OPT. 856 KING BED W/AIR 72\"/>



OPT. 830 FACING DINETTE

# WEIGHTS & MEASUREMENTS

CHASSIS	POWER BRIDGE® II	
	42M	42P
<b>MODELS</b>		
Wheelbase (inches)	302"	302"
GVWR (lbs) <sup>1</sup>	44,700	44,700
Front GAWR (lbs) <sup>2</sup>	14,700	14,700
Tag Axle GAWR	10,000	10,000
Rear GAWR (lbs) <sup>2</sup>	20,000	20,000
GCWR (lbs) <sup>3</sup>	59,700	59,700
Hitch Rating Weight (lbs) <sup>1</sup>	15,000	15,000
Tongue Weight (lbs) <sup>1,††</sup>	1,500	1,500
Fuel Capacity (gal)	150	150

## POWER BRIDGE® II CHASSIS

**Model:** Freightliner® XCM Series  
**Engine:** Cummins® 8.9L ISL  
**Transmission:** Allison® 3000 MH 6-Speed  
 w/Electronic Shifter

**Alternator:** Leece Neville 170 Amp  
**Torque:** 1,250 lb-ft @ 1,400 RPM  
**Horsepower:** 450HP

## DIMENSIONS & CAPACITIES

MODELS	42M	42P
Overall Length (inches) <sup>4</sup>	43' 6"	43' 6"
Overall Height (with A/C)	12' 10"	12' 10"
Overall Width (maximum) <sup>5, 6</sup>	102"	102"
Interior Height (maximum)	84"	84"
Interior Width (maximum)	96"	96"
Fresh Water Holding Tank (gal)	100	100
Grey Water Holding Tank (gal)	60	60
Black Water Holding Tank (gal)	40	40
Appliance Propane Tank (gal) (WC) <sup>7</sup>	28.2	28.2
Water Heater Tank (gal)	10	10

### Liquid Weight Reference:

Water (gal) = (8.3 lbs/3.8 kgs) Fuel (gal) = (7.1 lbs/2.8 kgs) Propane (gal) = (4.2 lbs/1.9 kgs)

### Metric Conversion:

Multiply pounds x 0.453 to obtain kilograms. Multiply gallons x 3.785 to obtain liters.  
 Multiply liters x 61 to obtain cubic inches.

## ADDENDUMS

- GVWR (Gross Vehicle Weight Rating) is the maximum permissible weight of this fully loaded motorhome. The GVWR is equal to or greater than the sum of the (UVW) unloaded vehicle weight plus the (OCCC) occupant cargo-carrying capacity.
- GAWR (Gross Axle Weight Rating) is the maximum permissible loaded weight a specific axle is designed to carry.
- GCWR (Gross Combined Weight Rating) is the value specified by the motorhome manufacturer as the maximum allowable loaded weight of this motorhome with its towed vehicle. Towing and braking capacities may be different. Refer to Fleetwood and chassis manufacturer's manuals for complete information.
- Length measured from front bumper to rear bumper (excludes accessories).
- Excludes safety equipment and awnings.
- Motorhomes feature a body width over 96" which will restrict your access to certain roads. Before purchasing, you should research any state and/or province road laws which may affect your usage.
- Tank manufacturer's listed water capacity (WC). Actual propane capacity is 80% of water listing as required by the safety code.

† The chassis manufacturer recommends the installation of a supplemental brake control system to activate the brakes on the vehicle or trailer you are towing. Hitch receiver ratings expressed are maximum for the hitch receiver installed and may require the purchase of additional equipment that is dependent on the weight of the towed load. Consult with hitch receiver manufacturer for further information.

†† Minimum Towable Load is the available weight, up to GCWR, when the coach is fully loaded to maximum GVWR. However, if the coach is loaded to something less than maximum GVWR, that extra available weight can be added to your Towable Load. For example, if your coach is loaded to 1000lbs less than maximum GVWR, your Towable Load increases accordingly.

\* UVW and OCCC are found on the label containing the federal certification tag in each RV.

**IMPORTANT—PLEASE READ:** Product information, photography and illustrations included in this publication were as accurate as possible at the time of printing. For further product information and changes, please visit our website at [www.fleetwoodrv.com](http://www.fleetwoodrv.com) or contact your local Fleetwood RV dealer. Prices, materials, design and specifications are subject to change without notice. All weights, fuel, liquid capacities and dimensions are approximate. Fleetwood RV has designed its recreational vehicles to provide a variety of uses for its customers. Each vehicle features optimal seating, sleeping, storage and fluid capacities. The user is responsible for selecting the proper combination of loads (i.e., occupants, equipment, fluids, cargo, etc.) to ensure that the vehicle's capacities are not exceeded.

## WHY FLEETWOOD RV?



### Quality

There's no cutting corners. Skilled craftsmen build every Fleetwood RV for maximum durability and longevity.



### Trust

More people trust Fleetwood RV. After all, we've spent over 60 years perfecting RVs, earning the loyalty of generations of RVers.



### Passion

We're truly passionate about the RV lifestyle. Fleetwood RV was founded by RV enthusiasts, and that tradition continues today.



### Safety

You've got precious cargo. So we've engineered dozens of innovative safety features into our motor homes to give you more peace of mind.



### Service

Help is nearby with 24/7 emergency roadside assistance.\* And when you need an upgrade or repair, you'll find Fleetwood RV dealers all across North America ready to assist you.



### Warranty

Exclusive RV ownercare warranty. See your Fleetwood RV dealer for details.

\*\* All 2013 Fleetwood RV motorhomes include a 1-year emergency roadside assistance membership. For complete info, see your Fleetwood RV dealer.

[www.FleetwoodRV.com](http://www.FleetwoodRV.com)

# PROVIDENCE®

### RV OWNERCARE\*\*

Limited one-year/15,000-mile coach warranty and three-year/45,000-mile structural warranty, whichever occurs first, and it is fully transferable for the first 12 months. RV OWNERCARE is one of the RV industry's most comprehensive programs and includes systems, appliances, components and construction, with no deductible and no service charge. RV OWNERCARE coverage is provided by a company that will be around in the future to service your needs. See your nearest Fleetwood RV dealer for a full explanation of benefits and restrictions.

### CONTACT US

To locate a dealer near you, visit our website at [www.fleetwoodrv.com](http://www.fleetwoodrv.com) or call 1-800-322-8216. We can also be contacted at Fleetwood RV Customer Relations, P.O. Box 1007, Decatur, IN 46733.

### IMPORTANT—PLEASE READ

Product information, photography and illustrations included in this publication were as accurate as possible at the time of printing. For further product information and changes, please visit our website at [www.fleetwoodrv.com](http://www.fleetwoodrv.com) or contact your local Fleetwood RV dealer. Prices, materials, design and specifications are subject to change without notice. All weights, fuel, liquid capacities and dimensions are approximate. Fleetwood RV has designed its recreational vehicles to provide a variety of uses for customers. Each vehicle features optimal seating, sleeping, storage and fluid capacities. The user is responsible for selecting the proper combination of loads (i.e., occupants, equipment, fluids, cargo, etc.) to ensure that the vehicle's capacities are not exceeded.



CONFIGURE A COACH THE WAY YOU WANT!

COLORS • FLOOR PLANS • OPTIONS • DÉCOR

[WWW.FLEETWOODRV.COM](http://WWW.FLEETWOODRV.COM)



ALLIED SPECIALTY VEHICLES

FLEETWOOD RV IS AN  
ALLIED SPECIALTY VEHICLE COMPANY.



YOUR LOCAL FLEETWOOD RV DEALER IS:

©2012. Fleetwood RV, Inc.  
Printed in the USA. Inventory Control Number PRO13B1, 05/12.  
Model Year 2013, First Edition.