

LUXURY ON THE GO *MELBOURNE*



MELBOURNE

MOTORHOMES BY JAYCO

MELBOURNE®

MOTORHOMES BY JAYCO®

LUXURY ON THE GO

You won't care if there's a bend in the road. A steep hill. Or a narrow street.

With the Jayco Melbourne, you'll welcome the journey. Designed for well-traveled people—and for those who love to travel well—Melbourne masters maneuverability with a Triton 305 HP engine and Ford E-450 chassis. Meanwhile, well-appointed interiors, complete with Washington Glazed Maple cabinetry, an Optima leather lounge and a Cloud Ten pillowtop mattress, deliver the ultimate luxury package. Travel well.





MELBOURNE 28F | WALNUT



MELBOURNE 28F | WALNUT



MELBOURNE 28F | WALNUT



MELBOURNE 28F | WALNUT

LUXURY STARTS WITH AN ATTENTION TO DETAIL

A. MELBOURNE'S WELL-APPOINTED CAB

Maneuver the roads in comfort thanks to an Optima leather driver seat with 6-way power.

B. TRITON 6.8L EFI V-10 305 HP ENGINE

Melbourne combines the robust Triton engine with a Ford E-450 chassis for ultimate handling.

C. APOLLO CONVECTION MICROWAVE

You'll forget you're cooking in an RV thanks to modern, high-end kitchen appliances.

D. ELECTRIC-POWERED STEPS

Make a grand entrance thanks to convenient electric-powered entry steps.

E. J-STONE SOLID-SURFACE COUNTERS

High-gloss countertops combine with matching sink covers for a stunningly functional kitchen.

F. AERODYNAMIC, SEAMLESS FRONT CAP

The front cap creates a more aerodynamic ride, while its seamless design provides leak protection.

**B****A****C****D**

YOU WANT PEACE OF MIND

That's why we offer our exclusive 2-year Co-Pilot Warranty, the industry's best and most comprehensive warranty program.



TO LEARN MORE ABOUT OUR QUALITY CONTROL TESTING, SCAN HERE WITH YOUR SMARTPHONE.



WITH YOUR PURCHASE

Every Jayco RV undergoes rigorous quality control testing before it leaves the factory, so you can be confident your new Jayco will continue to provide the ultimate in reliability for years to come.

For a copy of our 2-year Co-Pilot limited warranty with full terms and conditions, ask your local Jayco dealer.



JAYCO CONSTRUCTION

At Jayco, we've built a reputation for superior construction and craftsmanship. We always use top-quality materials and innovative manufacturing techniques—down to the smallest details. The result? Unmatched resale value and peace of mind in an RV that's built to handle whatever the road throws at it, while outlasting everything but your memories.



OLD WORLD CRAFTSMANSHIP

Jayco's dedicated production team includes Amish craftsmen who build with well-honed woodworking techniques passed down for generations.

ecoadvantage™

www.jayco.com/ecoadvantage



THE JAYCO ECOADVANTAGE IS OUR COMPANY'S COMMITMENT TO PROTECTING THE ENVIRONMENT. Scan this QR code with your smartphone to watch a video about our efforts and the impact we're making on our planet.



WALL CONSTRUCTION

- 1 Vacuum-bonded layers:** Involves 15-18 minutes of 144 tons of pressure to ensure a stronger bond
- 2 High-gloss, gel-coated fiberglass exterior and standard Diamond Shield paint protection:** Withstands use, travel and UV damage while creating a stunning package
- 3 Curved sidewalls and seamless front cap:** Increases aerodynamics, while the cap adds durability and leak protection where it's needed most

FLOOR CONSTRUCTION

- 4 Vacuum-bonded layers:** Backed by computer monitoring and constant quality control checks, Jayco prides itself on building a solid foundation
- 5 Welded aluminum frame:** Lighter than wood, increases Melbourne's maneuverability
- 6 Structurwood floors:** Creates one of the industry's strongest foundations

ROOF CONSTRUCTION

- 7 Vacuum-bonded layers:** Laminates materials together using more pressure than typical pinch-roll process
- 8 Seamless fiberglass shield:** Features one-piece construction, ensuring better leak protection
- 9 ¼" plywood decking on 5" arched welded aluminum trusses:** More moisture resistant, plywood holds up to the elements
- 10 Bead-foam insulation (R-23):** Maintains interior temperatures

PERFORMANCE

- 11 Rubber body mounts with Hellwig helper springs:** Reduces vibration
- 12 MOR/ryde frame:** Extends chassis for optimal weight distribution and features durable design with one-piece assembly, laser-shear, tight-fit construction and consistent, robotically-welded structure
- 13 Ford E-450 chassis and Triton 6.8L V-10 305 HP engine:** Features a 19,500 lbs. GCWR with up to 5,000 lbs. of towing capacity

STANDARDS AND OPTIONS

STANDARD EXTERIOR EQUIPMENT

TuffShell vacuum-bonded 5" crowned laminated roof
One-piece fiberglass roof
TuffShell vacuum-bonded laminated floor and sidewalls
Unitized, 1-1/2" floor construction
Bead-foam insulation (R-23 max roof, R-9 max floor, R-6 max walls)
Welded aluminum sidewall framework with curved wall construction
High-gloss, gel-coated sidewalls
Front and rear gel-coated fiberglass caps
Painted skirting
Diamond Shield paint protection film
Fiberglass running boards
Completely enclosed and protected slide mechanisms
Electric-powered, double-entrance step
Heavy-duty entrance grab handle
Entrance door gas strut
Radius-cornered entrance door with screen
Keyless entry touchpad
Patio light with inside switch
12V electric patio awning
Slideout topper awnings
Exterior speakers, high-output, marine-grade (2)
Lockable exterior storage compartments with door pulls
Onan 4,000-watt MicroQuiet generator with auto-changover
Dual-sliding battery tray
House battery
Illuminated battery disconnect switch
12V electrical system with 110V, 60-amp power converter
30-amp power cord
120V G.F.C.I. protected exterior receptacle
Black holding tank sprayer
Sewer hose compartment with door
Hookup for city water
12V demand water pump
Conveniently placed water pump switches
Water purification system
Heated holding tanks, 12V pads
Outside shower
Roof ladder

STANDARD INTERIOR EQUIPMENT

Washington Glazed Maple raised-panel cabinetry with deluxe hidden hinges
Lumbercore, screwed-style cabinet construction
Under-cabinet halogen lighting
Ball bearing drawer guides, 75-lb. capacity with full-drawer extension

One-piece J-Stone solid-surface, high-gloss countertop with integrated deep bowls with (2) sink covers
High-rise, single-lever faucet with pull-out sprayer
Brushed nickel fixtures
Plexiglas splash guard (select models)
Kitchen mini blind
6 cu. ft. refrigerator
Under-counter Apollo convection microwave with 3-burner cooktop and range hood
Dream Dinette mechanism, raises and lowers dinette tabletop
High-intensity halogen recessed
12V lighting package
78" ceiling height
Padded vinyl ceiling
Auto-ignition furnace with wall thermostat
Interior Command Center
Cable TV hookup with RG-6 coax
Crank-up digital antenna for TV with signal booster
Prep for satellite dish for roof and sidewall
Entertainment center in front, includes 32" digital LCD HDTV
Decorative sofa pillows
Fabric-covered box valances with lambrequin legs
Leather touch comfort lounger with arm-rest cup holders
Residential linoleum floor
Trackless carpeting with padding
ABS shower with one-piece surround
Robe/towel hooks
Removable clothing rod in shower (select models)
Porcelain stool with foot flush
Residential medicine cabinet with mirror
Skylight in shower with light (select models)
Stainless-steel sink bowl in bathroom
6-panel residential-style passage doors
Accordion door to rear bedroom
Halogen bedroom reading lights
Padded headboard
Powered attic fan
Queen bed with Cloud Ten pillowtop mattress and quilted bedspread
22" bedroom LCD HDTV

STANDARD DRIVING EQUIPMENT

Auxiliary start switch
3-point lap and shoulder safety belts (driver and passenger)
Optima leather driver seat with 6-way power
Optima leather passenger seat

Padded fabric headliner
Padded wings behind cab
Lower cab privacy drape
Dome lights
Power windows and door locks
Tilt steering wheel
Power anti-lock brakes with power steering
A/C and cruise control
Triton 6.8L EFI V-10 305 HP engine
Ford E-450 chassis
5-speed automatic TorqueShift series transmission with overdrive
55-gal. fuel tank
53-lb. chassis-mounted propane tank
130-amp alternator
5,000-lb. rated hitch with 7-way plug
Wheel liners
Hellwig helper springs
Rubber insulation body mounts
Automotive taillights

CUSTOMER VALUE PACKAGE

Portable, outside gas grill
Tankless water heater
400-watt inverter
15,000-BTU A/C with heat pump
Back-up and side-view cameras
Deluxe, remote-control, heated, side-view mirrors
Touch-Screen Premium In-Dash Sound System AM/FM/CD/DVD with back-up camera monitor with built-in GPS

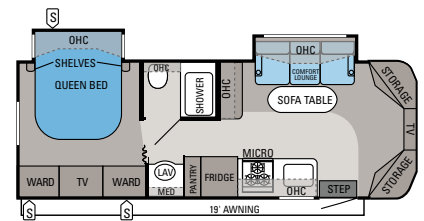
OPTIONS

Aluminum rims
Hydraulic leveling jacks
Premium Paint Package: Cinnamon
Premium Paint Package: Sandrift
Customer Value Package
Electric leather comfort lounger



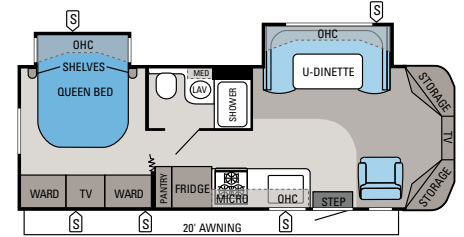
FOR A COMPLETE LIST OF STANDARDS AND OPTIONS, SCAN HERE WITH YOUR SMARTPHONE OR VISIT JAYCO.COM.

FLOORPLANS



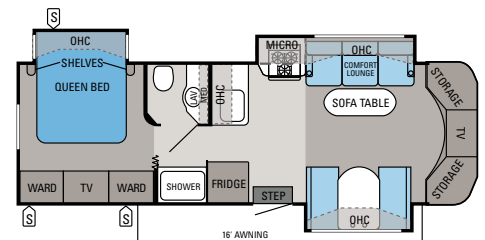
MELBOURNE | 26A

Ext. Length: 28' 9" Ext. Height: 128" Sleeps: 3-4



MELBOURNE | 28F

Ext. Length: 30' Ext. Height: 128" Sleeps: 3-4

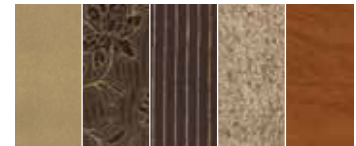


MELBOURNE | 29D

Ext. Length: 31' 7" Ext. Height: 128" Sleeps: 4-5

INTERIOR DÉCOR CHOICES

MIDNIGHT



NUTMEG



WALNUT



EXTERIOR PAINT CHOICES



SANDRIFT PREMIUM PAINT



CINNAMON PREMIUM PAINT

SPECIFICATIONS

FLOORPLAN	EXT. LENGTH	EXT. WIDTH	EXT. HEIGHT (WITH A/C)	INT. HEIGHT	GROSS VEHICLE WEIGHT RATING (LBS.)	GROSS COMBINED WEIGHT RATING (LBS.)	ENGINE/SIZE	WHEEL BASE	FURNACE AUTO-IGNITION (BTUS)	FRESH WATER CAPACITY (GALS.)	GRAY WASTE WATER CAPACITY (GALS.)	BLACK WASTE WATER CAPACITY (GALS.)
26A	28' 9"	96"	128"	78"	14,500	19,500	6.8L TRITON EFI V10	181"	31M	32.75	34	32
28F	30'	96"	128"	78"	14,500	19,500	6.8L TRITON EFI V10	191"	31M	32.75	34	32
29D	31' 7"	96"	128"	78"	14,500	19,500	6.8L TRITON EFI V10	212"	31M	31	34	32



THE **Jayco**[®] family STORY

THE JAYCO STORY BEGAN IN 1968 WITH OUR FAMILY—THE BONTRAGERS. Lloyd Bontrager created an innovative, easy-to-use lifter system that led to a better fold-down camper. Loaded with more conveniences, he believed his camper would bring families closer together.

Since then, the Jayco family has grown. From our factory to our front office, from our salespeople to our suppliers, our family bond is four decades strong with the support of more than 300 Jayco dealers.

Together, we're helping make new family stories. **YOUR FAMILY STORY.**

welcome to the Jayco family



Coach-Net
RV Technical & Roadside Assistance

Travel worry-free with Jayco's Customer First Roadside Assistance program, yours at no cost during your first year of ownership. This program is offered through Coach-Net, the largest RV emergency road service in the country, and gives you immediate access to dependable roadside assistance and support services with a simple phone call.

Establishing a solid relationship with your local Jayco dealer is a key component in the enjoyment of your new Jayco. By purchasing from a local dealer, you will have a convenient location for sales, parts and service support. We hope you enjoy working with them as much as we do.



Jayco proudly sponsors Tread Lightly!, a nonprofit organization whose mission is to empower generations to enjoy the outdoors responsibly through education and restoration.

JayPlus

From RV insurance to extended warranties, JayPlus has it covered. Ask your Jayco dealer about our exclusive JayPlus program today.




As a Jayco owner, you can be part of the Jayco Jafari International Travel Club. Ask your dealer about the Jafari "flight" in your area, write Jayco or visit our website.

Gross Vehicle Weight Rating (GVWR): The maximum permissible weight of the motorhome, including the Unloaded Vehicle Weight (UVW) plus passengers, personal items, all cargo, fluids, options and dealer-installed accessories. The GVWR is equal to or greater than the sum of the UVW and the Cargo Carrying Capacity.

Gross Combined Weight Rating (GCWR): The maximum allowable combined weight of the motorhome used as a tow vehicle and the attached towed vehicle.

It is important for your safety and enjoyment that you are aware of the weights and tow ratings of the RV you select. Consult a competent advisor for questions or advice. Whether you are new to RVing or a veteran, get a feel for the performance of

your RV before heading out on the roadways. When you tow a vehicle with your RV, you must drive differently than when you drive a single vehicle. Practice hooking up, driving, backing up and braking in a safe environment or seek out professional instruction. Jayco affixes a weight label to each RV which lists weight information for that vehicle. Refer to that label to verify the vehicle will meet your requirements. See specifications chart inside.

Jayco, Inc., P.O. Box 460, Middlebury, IN 46540, www.jayco.com 

See dealer for further information and prices. All information in this brochure is the latest available at the time of publication approval. Jayco reserves the right to make changes and to discontinue models without notice or obligation. Photos in this brochure may show optional equipment and props for photography purposes. RVs built for sale in Canada may differ to conform to Canadian codes. ©2012 Jayco, Inc. 13-MELB-PL 0712-60K Printed in U.S.A.