

JAY FLIGHT

family favorite

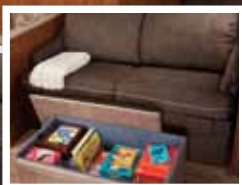
DESTINED FOR FUN.



america's family
FAVORITE



A FEW OF THE MANY REASONS JAY FLIGHT CONTINUES TO BE THE TOP-SELLING TRAVEL TRAILER



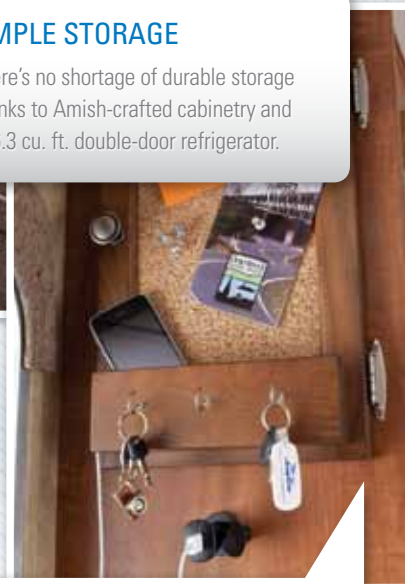
FLEXIBLE FOR FAMILIES

Making the most of space, the standard Flex Dinette features pull-out seating, comfortable ottoman and roomy storage, making this U-dinette a family must.



AMPLE STORAGE

There's no shortage of durable storage thanks to Amish-crafted cabinetry and a 6.3 cu. ft. double-door refrigerator.



COMMAND YOUR RV

The command center hides all of your controls behind a convenient message board with 12V cell phone charger outlet.



YOU WANT PEACE OF MIND

That's why we offer our exclusive 2-year Co-Pilot Warranty, the industry's best and most comprehensive warranty program.



america's favorite **DESTINATION**

AND ALL THE MANY REASONS YOU'LL WANT TO LENGTHEN YOUR NEXT FAMILY GETAWAY

FULL-FEATURED KITCHEN

You'll forget you're cooking in an RV thanks to our destination models' 18 cu. ft. residential-style refrigerator with ice maker, large 60/40 deep-bowl sink with high-rise faucet and stunning Glazed Concord Cherry cabinetry.



OPTIONAL FIREPLACE

Relax in front of a LedgeStone electric fireplace with brick facade and large HDTV.



RESIDENTIAL-STYLE ATRIUM

A residential-style atrium, 60" sliding patio door and detachable hitch provide home-like exterior touches on Jay Flight's destination models.



HIDE-A-BED SOFA WITH OTTOMAN*

Perfect for family members or overnight guests.

*Optional on DST.

WITH YOUR PURCHASE

Every Jayco RV undergoes rigorous quality control testing before it leaves the factory, so you can be confident your new Jayco will continue to provide the ultimate in reliability for years to come.

For a copy of our 2-year Co-Pilot limited warranty with full terms and conditions, ask your local Jayco dealer.



TO LEARN MORE ABOUT OUR QUALITY CONTROL TESTING, SCAN HERE WITH YOUR SMARTPHONE.



JAY FLIGHT TRAVEL TRAILERS

america's *family favorite*

Spacious slideouts, well-designed living areas, more than a dozen different floorplans and an endless list of family-friendly features make the Jay Flight travel trailer the perfect fit for any family. And with 75-plus gallons of fresh water, we're certain we can keep up with your family demands, too.





JAY FLIGHT 32TSBH | HAZELNUT



JAY FLIGHT 25RKS | SANDALWOOD



JAY FLIGHT 32TSBH | HAZELNUT

DINNER TIME

Jayco has dinner covered with a 3-burner gas range, a residential-style sink and microwave oven with carousel.

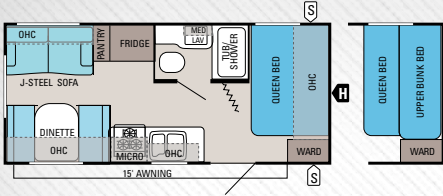
READY TO TOW

Built for families on the go, Jay Flight is packed with more standard towing features, like E-Z Lube axles for easy maintenance and an aerodynamic curved front profile for better gas economy. Once you get there, optional electric stabilizer jacks make setup a breeze.



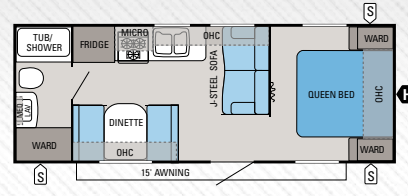
JAY FLIGHT 32TSBH | HAZELNUT

FLOORPLANS



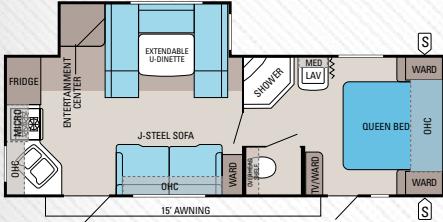
JAY FLIGHT | 19RD

Ext. Length: 23' 1" Ext. Height: 128" Unloaded Wt. (lbs.): 3,970* Sleeps: 4-7



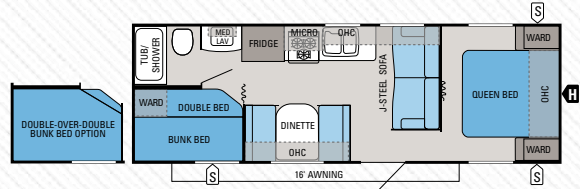
JAY FLIGHT | 22FB

Ext. Length: 26' 5" Ext. Height: 127" Unloaded Wt. (lbs.): 4,150 Sleeps: 4-6



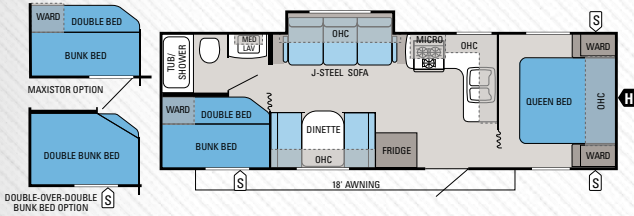
JAY FLIGHT | 25RKS

Ext. Length: 28' 8" Ext. Height: 135" Unloaded Wt. (lbs.): 5,865 Sleeps: 4-6



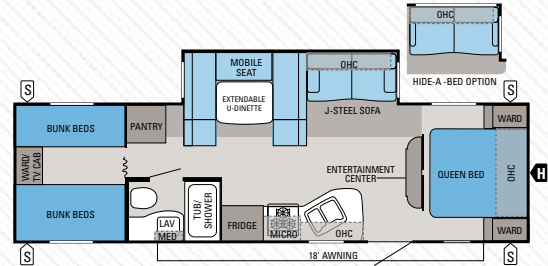
JAY FLIGHT | 26BH

Ext. Length: 29' 1" Ext. Height: 127" Unloaded Wt. (lbs.): 4,570 Sleeps: 7-9



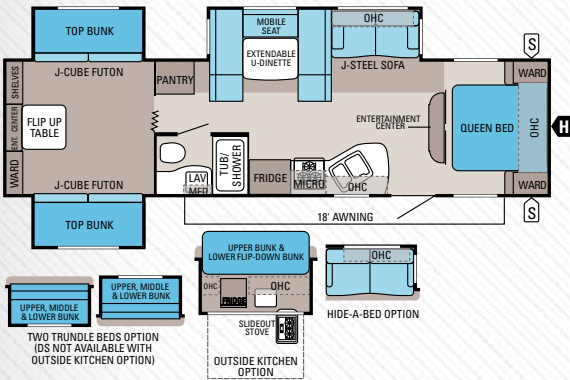
JAY FLIGHT | 28BHS

Ext. Length: 30' 6" Ext. Height: 127" Unloaded Wt. (lbs.): 5,045 Sleeps: 7-9



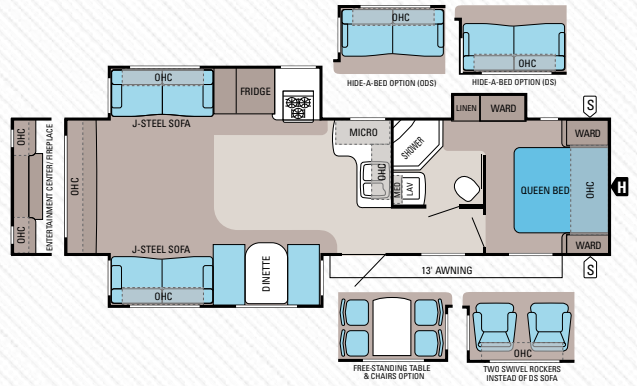
JAY FLIGHT | 29QBH

Ext. Length: 33' 3" Ext. Height: 134" Unloaded Wt. (lbs.): 6,575 Sleeps: 9-10



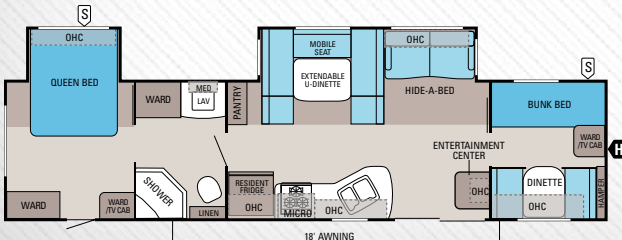
JAY FLIGHT | 32TSBH

Ext. Length: 35' 6" Ext. Height: 134" Unloaded Wt. (lbs.): 7,775 Sleeps: 11-12



JAY FLIGHT | 33RLDS

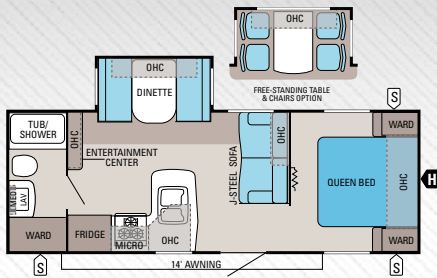
Ext. Length: 35' 5" Ext. Height: 134" Unloaded Wt. (lbs.): 7,825 Sleeps: 3-8



JAY FLIGHT | 36BHDS

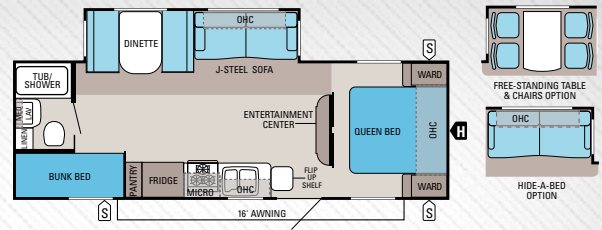
Ext. Length: 38' Ext. Height: 134" Unloaded Wt. (lbs.): 7,910 Sleeps: 8-10

- OUTSIDE STORAGE
- TRAILER HITCH
- LAV BATHROOM SINK
- MICRO MICROWAVE
- OHC OVERHEAD CABINETS
- FRIDGE REFRIGERATOR
- WARD WARDROBE



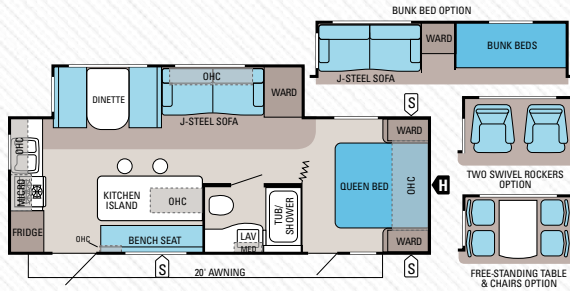
JAY FLIGHT | 24FBS

Ext. Length: 27' Ext. Height: 134" Unloaded Wt. (lbs.): 4,980* Sleeps: 3-6



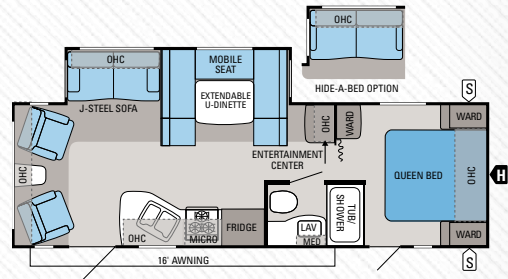
JAY FLIGHT | 25BHS

Ext. Length: 28' 11" Ext. Height: 134" Unloaded Wt. (lbs.): 5,770 Sleeps: 6-8



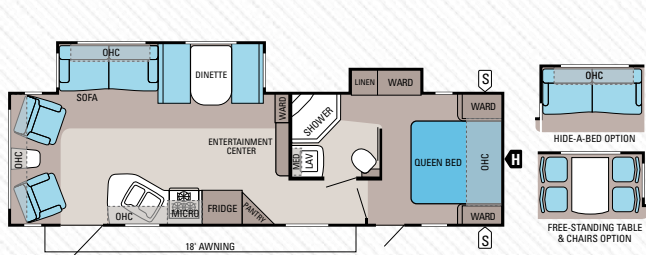
JAY FLIGHT | 26RKS

Ext. Length: 28' 5" Ext. Height: 134" Unloaded Wt. (lbs.): 5,970 Sleeps: 3-6



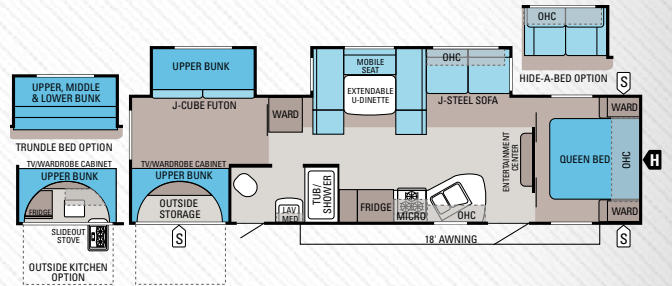
JAY FLIGHT | 26RLS

Ext. Length: 30' Ext. Height: 134" Unloaded Wt. (lbs.): 6,005 Sleeps: 4-6



JAY FLIGHT | 29RLDS

Ext. Length: 33' 5" Ext. Height: 134" Unloaded Wt. (lbs.): 6,990 Sleeps: 3-6



JAY FLIGHT | 32BHDS

Ext. Length: 35' 6" Ext. Height: 134" Unloaded Wt. (lbs.): 7,445 Sleeps: 8-10

SPECIFICATIONS

FLOORPLAN	EXTERIOR LENGTH	EXTERIOR WIDTH	EXTERIOR HEIGHT (WITH A/C)	INTERIOR HEIGHT	UNLOADED VEHICLE WEIGHT (LBS.)	DRY HITCH WEIGHT (LBS.)	GROSS VEHICLE WEIGHT RATING (LBS.)	CARGO CARRYING CAPACITY (LBS.)	FRESH WATER CAPACITY (GAL.) (WITH WATER HEATER)	GRAY WASTEWATER CAPACITY (GAL.)	TOILET/BLACK WASTEWATER CAPACITY (GAL.)
19RD	23' 1"	96"	128"	81"	3,970*	510*	6,200	2,230*	90	32.5	32.5
22FB	26' 5"	96"	127"	81"	4,150	565	6,500	2,350	90	32.5	32.5
24FBS	27'	96"	134"	81"	4,980*	605*	7,500	2,520*	86	32.5	32.5
25BHS	28' 11"	96"	134"	81"	5,770	755	8,180	2,410	86	32.5	32.5
25RKS	28' 8"	96"	135"	81"	5,865	790	8,400	2,535	86	65	32.5
26BH	29' 1"	96"	127"	81"	4,570	560	7,500	2,930	90	32.5	32.5
26RKS	28' 5"	96"	134"	81"	5,970	790	8,400	2,430	86	65	32.5
26RLS	30'	96"	134"	81"	6,005	820	8,500	2,495	86	32.5	32.5
28BHS	30' 6"	96"	127"	81"	5,045	690	7,500	2,455	90	32.5	32.5
29QBH	33' 3"	96"	134"	81"	6,575	870	9,250	2,675	86	32.5	32.5
29RLDS	33' 5"	96"	134"	81"	6,990	955	9,500	2,510	86	65	32.5
32BHDS	35' 6"	96"	134"	81"	7,445	1,015	9,975	2,530	86	32.5	32.5
32TSBH	35' 6"	96"	134"	81"	7,775	815	10,500	2,725	86	32.5	32.5
33RLDS	35' 5"	96"	134"	81"	7,825	1,070	10,300	2,475	86	32.5	32.5
36BHDS	38'	96"	134"	81"	7,910	940	10,500	2,590	90	32.5	32.5

The weights of certain options and/or option packages are not included in the UYW listed above. *Estimate. Visit your Jayco dealer or www.jayco.com for official specs.



JAY FLIGHT BUNGALOW 40FKS | DRIFTWOOD



JAY FLIGHT DST 40BHTS | HAZELNUT



JAY FLIGHT DST 40BHTS | HAZELNUT



JAY FLIGHT DST 40BHTS | HAZELNUT



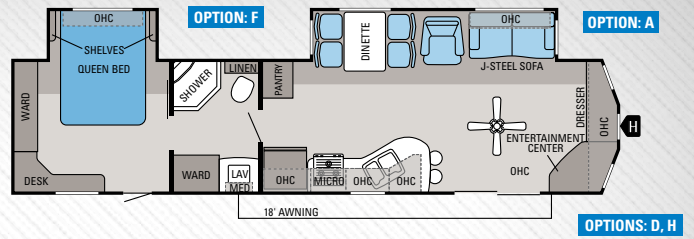
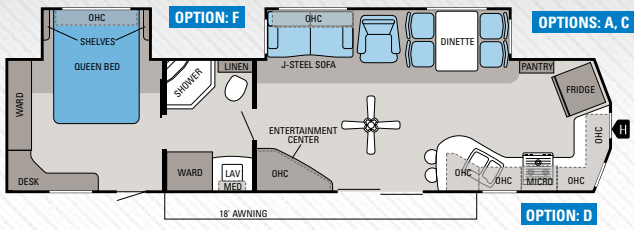
JAY FLIGHT DST

JAY FLIGHT BUNGALOW

america's favorite *destination*

Stay awhile in the Jay Flight destination trailers. Thanks to spacious floorplans, taller ceilings and a host of residential amenities, like standard ceiling fans and optional king-sized beds, your next camping destination is certain to be a good one.

JAY FLIGHT DST FLOORPLANS

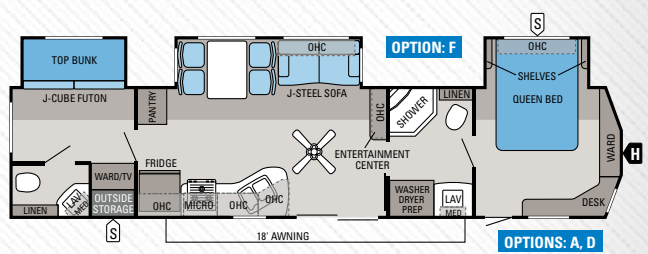
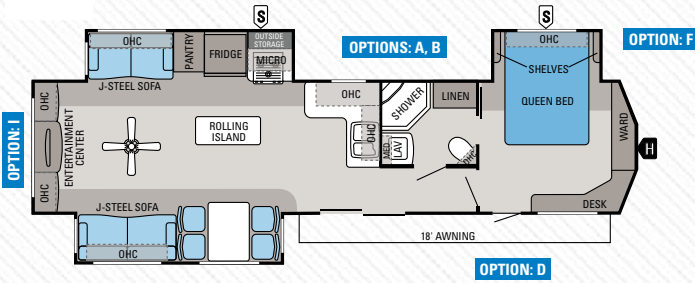


JAY FLIGHT DST | 38FKDS

Ext. Length: 38' 11" Ext. Height: 147" Unloaded Weight (lbs.): 9,415* Sleeps: 3-4

JAY FLIGHT DST | 38FLDS

Ext. Length: 38' 11" Ext. Height: 147" Unloaded Weight (lbs.): 9,415* Sleeps: 3-4



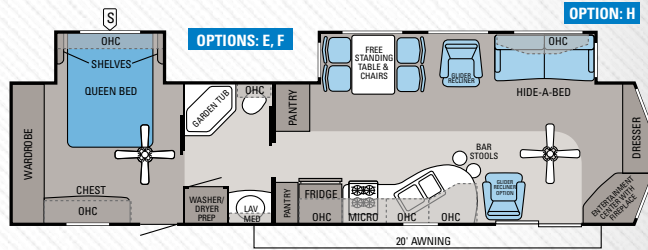
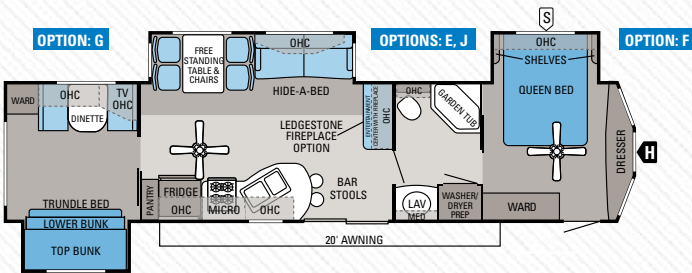
JAY FLIGHT DST | 38RLTS

Ext. Length: 38' 11" Ext. Height: 147" Unloaded Weight (lbs.): 9,595 Sleeps: 3-6

JAY FLIGHT DST | 40BHTS

Ext. Length: 40' 11" Ext. Height: 147" Unloaded Weight (lbs.): 9,325 Sleeps: 5-7

JAY FLIGHT BUNGALOW FLOORPLANS

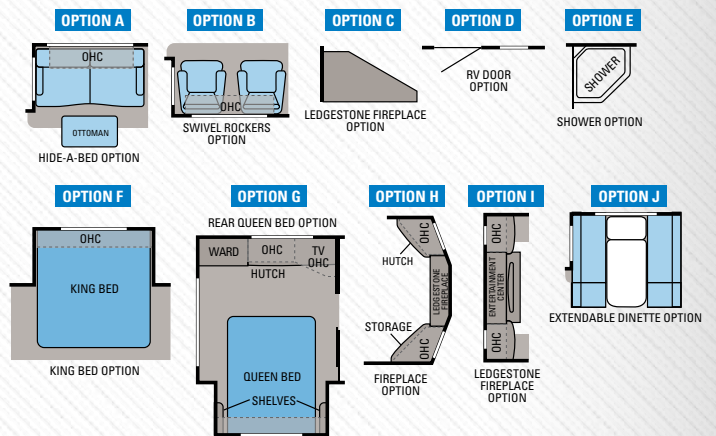
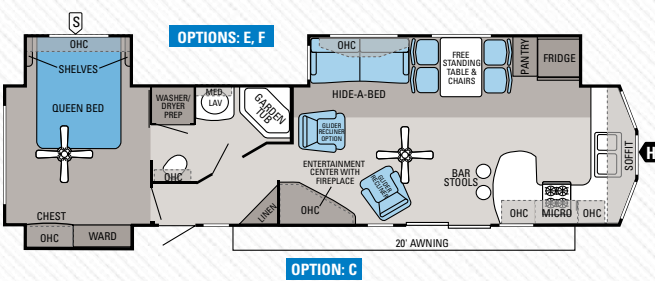


JAY FLIGHT BUNGALOW | 40BHS

Ext. Length: 40' 11" Ext. Height: 152" Unloaded Weight (lbs.): 10,535 Sleeps: 8-10

JAY FLIGHT BUNGALOW | 40FER

Ext. Length: 40' 11" Ext. Height: 152" Unloaded Weight (lbs.): 10,365 Sleeps: 4-6



JAY FLIGHT BUNGALOW | 40FKS

Ext. Length: 40' 11" Ext. Height: 152" Unloaded Weight (lbs.): 10,450 Sleeps: 4-6

SPECIFICATIONS

FLOORPLAN	EXTERIOR LENGTH	EXTERIOR WIDTH	EXTERIOR HEIGHT (WITH A/C)	INTERIOR HEIGHT	UNLOADED VEHICLE WEIGHT (LBS.)	DRY HITCH WEIGHT (LBS.)	GROSS VEHICLE WEIGHT RATING (LBS.)	CARGO CARRYING CAPACITY (LBS.)	FRESH WATER CAPACITY (GAL.) (WITH WATER HEATER)	GRAY WASTEWATER CAPACITY (GAL.)	TOILET/BLACK WASTEWATER CAPACITY (GAL.)
JAY FLIGHT DST	38FKDS	38' 11"	96"	147"	90"	9,415*	TBD	11,500*	2,085*	48	39
	38FLDS	38' 11"	96"	147"	90"	9,415*	TBD	11,500*	2,085*	48	39
	38RLTS	38' 11"	96"	147"	90"	9,595	1,375	12,000	2,405	50	39
	40BHTS	40' 11"	96"	147"	90"	9,325	1,420	12,000	2,675	50	78
JAY FLIGHT BUNGALOW	40BHS	40' 11"	102"	152"	96"	10,535	1,550	12,500	1,965	50	65
	40FER	40' 11"	102"	152"	96"	10,365	1,645	12,500	2,135	48	65
	40FKS	40' 11"	102"	152"	96"	10,450	1,565	12,500	2,050	48	65

The weights of certain options and/or option packages are not included in the UVW listed above. *Estimate. Visit your Jayco dealer or www.jayco.com for official specs.

CONSTRUCTION *and craftsmanship*

At Jayco, we've built a reputation for superior construction and quality craftsmanship. We pride ourselves on always using top-quality materials and innovative manufacturing techniques. That commitment has led to our latest construction advancement, the all-new exclusive Magnum Roof System, 50 percent stronger than other roofs in the industry, built to outlast everything but your memories.



OUR NEW ROOF FEATURES ...

- 1 4 1/2" crowned wood trusses: Uses 2"x 2" vertical studs to maximize load capacity, while oversized nail plates provide a tighter design
- 2 3/8" roof decking, screwed down at every seam: More durable than typical stapled construction, provides fully walkable roof
- 3 Residential attic-style insulation: Maintains interior temperatures while allowing for room to run wiring, reducing risky electrical shorts
- 4 One-piece, sidewall-wrapped Alpha Ply material: Provides leak protection



INTERIOR DÉCORS

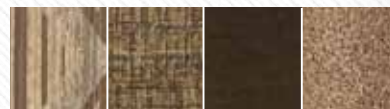
HAZELNUT



SANDALWOOD



DRIFTWOOD



WOOD



WALL CONSTRUCTION

- 5 2" x 2" wooden studs: Creates Jay Flight's long-lasting framework
- 6 Hand-tucked and glued fiberglass insulation (R-7): Prevents insulation from sagging over time (vs. blanket-insulation technique), while helping increase insulation value near studs
- 7 Extra-wide corner seals: Prevents leaks on the corner molds, baggage/entrance doors, window seals

FLOOR CONSTRUCTION

- 8 5/8" tongue-and-groove plywood deck on 2" x 3" wooden floor joists: Moisture resistant, plywood holds up to the elements
- 9 Fiberglass insulation (R-7): Maintains interior temperatures
- 10 Full-width outriggers: Supports wall weight with no more than 4-foot spacing (vs. 8-foot spacing) and wall-to-wall, full-width design

FEATURES

- 11 Galvanized-steel wheel wells: Reduces heat loss through floor; prevents floor damage in case of a blown tire
- 12 WaterWorks system: Boasts 75-plus gallons of fresh water (n/a destination models)
- 13 Innovative, aerodynamic front profile: Eliminates angled profile, increasing towability (n/a destination models)



eCO advantage™ www.jayco.com/ecoadvantage

THE JAYCO ECOADVANTAGE IS OUR COMPANY'S COMMITMENT TO PROTECTING THE ENVIRONMENT. Scan this QR code with your smartphone to watch a video about our efforts and the impact we're having on our world.

STANDARDS AND OPTIONS

JAY FLIGHT TRAVEL TRAILER

STANDARD EXTERIOR EQUIPMENT

I-Class cambered structural-steel I-beam frame with fully integrated A-frame

Magnum truss roof system with one-piece seamless Alpha Ply 5/8" tongue-and-groove plywood floor decking

Two-sided reflective foil insulation in flush-floor slideout floors

Electric slideouts with enclosed gear system (slide models)

30" x 72" main entrance door with step light

Exterior-marine grade speakers (2)

G20 dark-tint windows

Radial tires with galvanized-steel, impact-resistant wheel wells

E-Z Lube axles

Aerodynamic, rounded front profile with front diamond plate

Black tank flush sprayer

30-amp power service

WaterWorks system with 75+ gallon freshwater capacity and durable, winterized Tuff Pex water lines

Stabilizer jacks with sand pads (4)

STANDARD INTERIOR EQUIPMENT

Screwed-and-glued Glazed Concord Cherry cabinetry

Ball bearing drawer guides, 75-lb. capacity, full-drawer extension

Large 60/40 acrylic kitchen sink with high-rise faucet

6-gal. gas/electric DSI Atwood water heater

3-burner range with 9,000-BTU SuperBurner and piezo igniter

6.3 cu. ft. Norcold double-door refrigerator

Atwood auto ignition furnace with wall thermostat

Cable/satellite prep

Plywood bed, dinette and bunk bases

J-Steel jack-knife sofa

Diamondflor vinyl flooring

Residential-grade carpet with padding

Porcelain stool with foot flush

300-lb. rated bunks

CUSTOMER VALUE PACKAGE (MANDATORY)

Dual 30-lb. propane bottles with easy access ABS cover

Outside shower

Water heater bypass

13,500-BTU A/C with directional/closeable vents

Microwave with built-in hood over range

Oven

ABS shower surround with bath skylight and fan

ELITE PACKAGE

Aluminum rims, power tongue jack, 8 cu. ft. Norcold refrigerator with hardwood insert and deluxe pillowtop mattress

THERMAL PACKAGE

Insulated, heated and enclosed underbelly and 2-sided reflective foil insulation in main roof and slideout roof

OPTIONS

Adjustable-pitch electric patio awning

Thermal-paned windows

Maxistor door (select models)

Electric stabilizer jacks

Electric tongue jack

Roof ladder

Spare tire with carrier

Outside kitchen (select models)

Outside bumper-mount grill

Bike rack/cargo tray system (select models)

Customer Value Package with 15,000-BTU A/C

26" LED HDTV

Free-standing table with 4 chairs (select models)

Bunks in lieu of dinette (26RKS)

Swivel rockers in lieu of dinette (2) (select models)

Swivel rockers in lieu of door-side sofa (2) (select models)

Door-side hide-a-bed sofa (33RLDS)

Hide-a-bed sofa (most models)

Ledgestone fireplace with 32" LED HDTV (select models)

Linoleum living area (select models)

Quad bunk in lieu of standard bunk (select models)

Trundle beds in lieu of J-Cube (select models)

Double bunk over double bed (select models)

JAY FLIGHT DST

STANDARD EXTERIOR EQUIPMENT

5/8" tongue-and-groove plywood floor decking

12" I-Class cambered structural-steel I-beam frame with fully integrated A-frame

Magnum truss roof system with one-piece seamless Alpha Ply

Two-sided reflective foil in flush-floor slideout floors

Electric powered slideouts with enclosed gear system

60" residential-style sliding patio door

Fold-away grab handles

Exterior marine-grade speakers (2)

G20 dark-tint windows

Vented front windows

Atrium-style front end laminated wall

Detachable hitch

Detachable power cord

Radial tires with galvanized-steel, impact-resistant wheel wells

E-Z Lube axles

Cable/satellite prep

Double-wide corner mold extrusions

Black tank flush sprayer

50-amp power service

Stabilizer jacks with sand pads (4)

STANDARD INTERIOR EQUIPMENT

90" interior height

Screwed-and-glued Glazed Concord Cherry cabinetry

Ball bearing drawer guides, 75-lb. capacity, full extension

18 cu. ft. residential-style 120V refrigerator with ice maker

3-burner range with 9,000-BTU SuperBurner and piezo igniter

Large 60/40 deep-bowl acrylic kitchen sink with high-rise faucet

10/16-gal. gas/electric DSI Atwood water heater

40,000-BTU Atwood auto ignition furnace with wall thermostat

Hidden switch command/charging center

Diamondflor vinyl flooring

Residential-grade carpet with padding

Vertical patio door blinds

120V ceiling fan in living room

Pleated shades with box style valances and lambrequins

4" high-density foam, reversible dinette cushions

Plywood bed, dinette and bunk bases

J-Steel jack-knife sofa

Medicine cabinet with mirror

Porcelain stool with foot flush

300-lb. rated bunk beds

Sliding pocket-style bedroom/bunk room doors (select models)

Bedroom stereo speakers (2)

CUSTOMER VALUE PACKAGE (MANDATORY OPTION)

Dual 30-lb. propane tanks

Outside shower

13,500-BTU A/C with directional/closeable vents

Water heater bypass

Microwave with built-in hood over range

Oven

ABS shower surround with skylight and fan

THERMAL PACKAGE

Insulated, heated and enclosed underbelly and 2-sided reflective foil insulation in main roof and slideout roof

OPTIONS

Adjustable-pitch electric patio awning

RV door option in lieu of patio door (select models)

Thermal-paned, tinted, safety-glass windows

Spare tire with carrier

Outside bumper-mount grill

Roof ladder

Customer Value Package with 15,000-BTU A/C

32" LED HDTV

Ledgestone fireplace, facade and 32" LED TV (select models)

Free-standing table with 4 chairs (select models)

Hide-a-bed sofa with ottoman

2nd glider/recliner (select models)

Swivel rockers in lieu of door-side sofa (2) (select models)

Door-side hide-a-bed (38RLTS)

King bed

2nd A/C in bedroom

JAY FLIGHT BUNGALOW

STANDARD EXTERIOR EQUIPMENT

Deluxe Graphics Package

102" wide-body construction

Magnum truss roof system with one-piece seamless Alpha Ply 5/8" tongue-and-groove plywood floor decking

12" I-Class cambered structural-steel I-beam frame with fully integrated A-frame

Two-sided reflective foil in flush-floor slideout floors

Electric-powered slideouts with enclosed gear system

60" residential-style sliding patio door

Fold-away grab handles

Exterior marine-grade speakers (2)

Patio awning

G20 dark-tint windows

Radial tires with galvanized-steel, impact-resistant wheel wells

E-Z Lube axles

Fiberglass atrium-style front cap

Detachable hitch

Outside shower

Black tank flush sprayer

50-amp power service

STANDARD INTERIOR EQUIPMENT

96" interior height

120V ceiling fan in living room and bedroom

Screwed-and-glued Glazed Concord Cherry cabinetry

Ball bearing drawer guides, 75-lb. capacity, full extension

18 cu. ft. residential-style 120V refrigerator with ice maker

20" free-standing 4-burner gas range with oven

Large 60/40 deep-bowl acrylic kitchen sink with high-rise faucet

16-gal. gas/electric DSI Atwood water heater

40,000-BTU Atwood auto ignition furnace with wall thermostat

Diamondflor vinyl flooring

Residential-grade carpet with padding

Vertical patio door blinds

Plywood bed and bunk bases

Air mattress hide-a-bed with pull-out storage drawer

Electric fireplace

Cable/satellite prep

Porcelain stool with foot flush

300-lb. rated bunk beds

Deluxe pillowtop mattress

Bedroom stereo speakers (2)

CUSTOMER VALUE PACKAGE (MANDATORY OPTION)

Dual 30-lb. propane bottles

Stabilizer jacks (4)

15,000-BTU A/C with directional/closeable vents

Water heater bypass

Microwave with built-in hood over range

Sink covers (2)

Multi-Media Premium Sound System CD/DVD with MP3 input jack

ABS tub surround with skylight and fan

Quilted bedspread

THERMAL PACKAGE

Insulated, heated and enclosed underbelly and 2-sided reflective foil insulation in main roof and slideout roofs

OPTIONS

Adjustable-pitch electric patio awning

Manual awning delete

Slideout awnings (2 or 3) (select models)

Thermal-paned, tinted, safety-glass windows

Spare tire

Outside bumper-mount grill

Roof ladder

20-gal. electric water heater

2nd glider/recliner (select models)

Ledgestone fireplace, facade and 40" LCD TV (select models)

Extendable dinette (40BHS)

Linoleum living area (select models)

Shower in lieu of garden tub

King bed

Rear queen bed (select models)

2nd A/C in bedroom (13,500-BTU)



THE **Jayco**[®] family STORY

THE JAYCO STORY BEGAN IN 1968 WITH OUR FAMILY—THE BONTRAGERS. Lloyd Bontrager created an innovative, easy-to-use lifter system that led to a better fold-down camper. Loaded with more conveniences, he believed his camper would bring families closer together.

Since then, the Jayco family has grown. From our factory to our front office, from our salespeople to our suppliers, our family bond is four decades strong with the support of more than 300 Jayco dealers.

Together, we're helping make new family stories. **YOUR FAMILY STORY.**

welcome to the Jayco family



Coach-Net
RV Technical & Roadside Assistance

Travel worry-free with Jayco's Customer First Roadside Assistance program, yours at no cost during your first year of ownership. This program is offered through Coach-Net, the largest RV emergency road service in the country, and gives you immediate access to dependable roadside assistance and support services with a simple phone call.

Establishing a solid relationship with your local Jayco dealer is a key component in the enjoyment of your new Jayco. By purchasing from a local dealer, you will have a convenient location for sales, parts and service support. We hope you enjoy working with them as much as we do.



Jayco proudly sponsors Tread Lightly!, a nonprofit organization whose mission is to empower generations to enjoy the outdoors responsibly through education and restoration.

JayPlus

From RV insurance to extended warranties, JayPlus has it covered. Ask your Jayco dealer about our exclusive JayPlus program today.



As a Jayco owner, you can be part of the Jayco Jafari International Travel Club. Ask your dealer about the Jafari "flight" in your area, write Jayco or visit our website.

Unloaded Vehicle Weight (UWV): Sometimes referred to as "Dry Weight," UWV means the typical weight of this trailer as built at the factory. The UWV, as used in product literature and other promotional materials, does not include cargo, fresh water, propane, options or dealer-installed accessories.

Gross Vehicle Weight Rating (GVWR): GVWR means the maximum permissible weight of the trailer, including the UWV plus passengers, personal items, all cargo, fluids, options, and dealer-installed accessories. The GVWR is equal to or greater than the sum of the UWV and the CCC.

Cargo Carrying Capacity (CCC): CCC means the maximum weight of all passengers, personal items, food, fresh water, propane, tools, other cargo and dealer-installed accessories that can be carried by the trailer. CCC is equal to or less than GVWR minus UWV. The addition of options will decrease the CCC.

Hitch Weight (HW): The hitch weight, as used in product literature and other promotional materials, does not include cargo, fresh water, propane gas, options or dealer-installed accessories. The addition of these types of items will either add to or subtract from the stated hitch weight.

It is important for your safety and enjoyment that your tow vehicle be adequately sized and equipped to tow and handle the GVWR of the RV you select. Review weights and rating of your tow vehicle and consult a competent advisor for questions or advice. Whether you are new to RVing or a veteran, get a feel for the performance of your tow vehicle before heading out on the roadways. When you tow an RV, you must drive differently than when you drive a single vehicle. Practice hooking up, driving, backing up and braking in a safe environment or seek out professional instruction. Jayco affixes a weight label to each RV which lists weight information for that vehicle. See specifications chart inside.

Jayco, Inc., P.O. Box 460, Middlebury, IN 46540, www.jayco.com

See dealer for further information and prices. All information in this brochure is the latest available at the time of publication approval. Jayco reserves the right to make changes and to discontinue models without notice or obligation. Photos in this brochure may show optional equipment and props for photography purposes. RVs built for sale in Canada may differ to conform to Canadian codes. ©2012 Jayco, Inc. 13-JFLT-PL 0712-40K Printed in U.S.A.