

# SUNCRUISER

2013



CLICK TO NAVIGATE

<a href="#">Overview</a>	<a href="#">Lounge</a>	<a href="#">Dining</a>	<a href="#">Bathroom</a>	<a href="#">Exterior</a>	<a href="#">Floorplans</a>	<a href="#">Paint</a>	<a href="#">WIT Club</a>
<a href="#">Features</a>	<a href="#">Kitchen</a>	<a href="#">Bedroom</a>	<a href="#">Cab</a>	<a href="#">SuperStructure</a>	<a href="#">Interior Décor</a>	<a href="#">Specifications</a>	<a href="#">Warranty</a>



ON THE COVER: 35P Dark Silver Full-Body Paint

35P Westcott with Coffee-Glazed Vienna Maple Cabinetry

## THE MORE YOU SEE IT, THE MORE YOU LOVE IT

When people say they want an incredibly spacious gas powered coach filled with user-friendly features and upscale amenities, they're not just describing their ideal motor home, they're describing the 2013 Itasca SunCruiser.® Choose from three floorplans with full-wall slideouts and features and amenities typically reserved for high-end diesel pushers, such as Corian® countertops, premium Ultraleather™ cab seats, MCD American Duo® solar/blackout roller shades and TrueAir® maximum comfort air conditioning. The 37F even offers a private master bath and separate guest bath, plus the first-class comfort of a powered queen bed with Ideal Rest® Natural Reserve digital comfort control mattress. And, because every SunCruiser is built with Winnebago Industries'® legendary SuperStructure® construction, this idyllic motor home experience is one that will last for years of adventure.

### Why SunCruiser?

- Full-wall slideout floorplans
- TrueAir® Maximum Comfort A/C
- RV Radio®/rearview monitor system
- Corian countertops
- MCD American Duo solar/blackout roller shades
- Swivel Ultraleather cab seats
- Spacious bedrooms
- Master bath and guest bath (37F)
- Hydraulic leveling jacks with 3-position controls
- Stylized aluminum wheels
- HDMI 4x4 Matrix offers HD inputs to all TVs



**RECOGNIZED QUALITY** The RV Dealers Association annually bestows the Quality Circle Award based on dealer ratings to manufacturers that provide exceptional products, service and support. Only one manufacturer has received this award for sixteen consecutive years: Winnebago Industries®, proud manufacturer of the Itasca SunCruiser.



### BEST IN CLASS

See how Winnebago Industries takes motor home design and function to the next level, and why we've earned the right to be called the Most Recognized Name in Motor Homes.®



Click on this icon throughout the brochure to link to more information on the web.



Watch HD video from multiple sources, on multiple TVs—simultaneously—with the **HDMI 4x4 Matrix Video Selection System**.



Day or night, the smoothly retracting **MCD American Duo® Solar/Blackout Roller Shades** give you total control of light and privacy levels.



The touch screen **RV Radio** includes a CD player, MP3 input and the monitor for the rearview and sideview cameras.



No more cramped showers—the **BIG Shower** is one of the industry's largest with a generous opening and plenty of elbow room (37F).






You will always have the convenience of fresh, clean laundry in your travels when you select the **Washer and Dryer** (35P, 37F).



Important gauges, switches and controls are all centrally located in the **OnePlace® Systems Center** for ease of use.

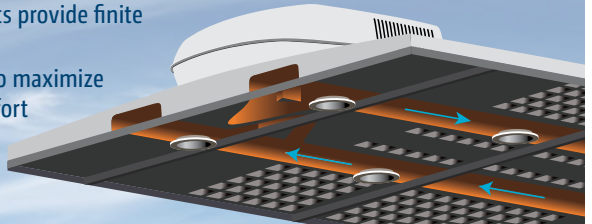
## TRUEAIR®



**TrueAir® Maximum Comfort A/C** Two high-efficiency, low-profile, roof-mount cooling units and precision engineered ducting deliver unsurpassed cooling power.

- D-shaped, formed ductwork optimizes airflow
- Dual-zone thermostat controls offer precision cooling
- No roof air condensation
- Infinitely adjustable ceiling vents provide finite control
- Designed to maximize coach comfort





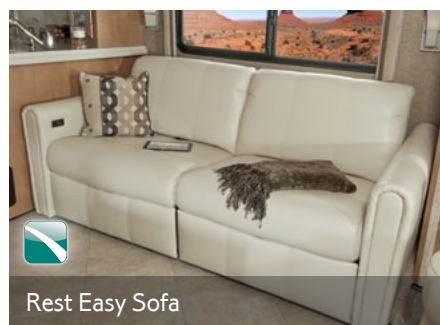


35P Westcott with Coffee-Glazed Vienna Maple Cabinetry

As the slideouts expand, the furniture in your SunCruiser expands with it. At the press of a button the Rest Easy® sofa converts into a lounger or a bed. Enjoy some quiet time in the Euro recliner with a hoop base that can be moved about the coach when parked. The entertainment center keeps you entertained with a stunning TV and Blu-Ray® home theater system. It's enough to make you wish for a rainy day.



Euro Recliner



Rest Easy Sofa





Corian countertops set the stage for elegant meal preparation in a kitchen that boasts residential appliances and plenty of storage. You will love the versatility of the stainless steel microwave/convection oven and the people you cook for will love the results.



35P Kitchen



Available Four-Door Refrigerator



Full-Extension Drawer Slides



The U-shaped dinette in the 32H provides a comfortable focal point for both dining and relaxing. The elegant dining table is offered for those who want a more intimate setting, while the versatility of the BenchMark® full-comfort dinette makes it a popular option for many travelers.



35P BenchMark Full-Comfort Dinette



37F Available Dining Table/Buffer





37F Bedroom

Reading a book? The power queen bed in the 37F props you up at the press of a button. It features the Ideal Rest Natural Reserve digital comfort control mattress that lets you individually adjust the firmness of each side of the bed. A cotton and bamboo fiber cover panel and a duo firmness reversible insert provide comfort you won't find in any other RV mattress. A king bed is available in the 35P and 37F. A dedicated 110-volt outlet in the bedroom is connected to the 1,000-watt inverter to provide power without the need to run the generator when shoreline power is not available.



35P Vanity



35P Bedroom





35P Bathroom



37F Master Bathroom





Dash

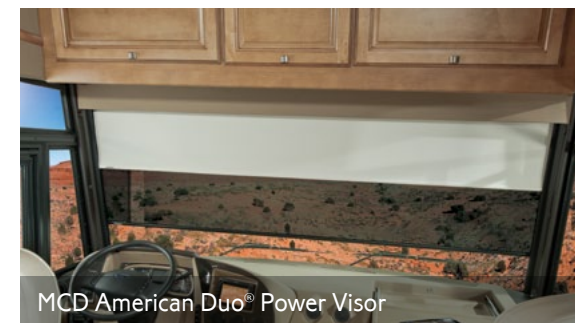
Settle into the power Ultraleather cab seat and you are in total command with rearview and sideview cameras incorporated into the touch screen RV Radio. Press a button and the MCD American Duo power visor drops down to block the sun. For the passenger, a dash workstation provides a perfect platform for writing or using a tablet.



Cab Seats



Dash Workstation



MCD American Duo® Power Visor



The full-body painted exterior looks even better when you reveal the available exterior entertainment center with a 32" LCD TV that is built into the sidewall beneath the electric awning. 3-position controls for the leveling jacks let you level the coach from the cab, entrance door or service center so you can watch the jacks drop precisely in place. Color-coded labels and ergonomic controls in the exterior service center make hookups a snap.



Entertainment Center



Exterior Service Center



Stylized Aluminum Wheels



**Fiberglass Roof** The crowned, one-piece fiberglass roof is backed by a 10-year parts-and-labor roof skin warranty.

**Thermo-Panel® Sidewalls** By layering fiberglass and high-density block foam insulation with welded aluminum support structures, we create some of the industry's strongest, most durable and lightweight sidewalls.

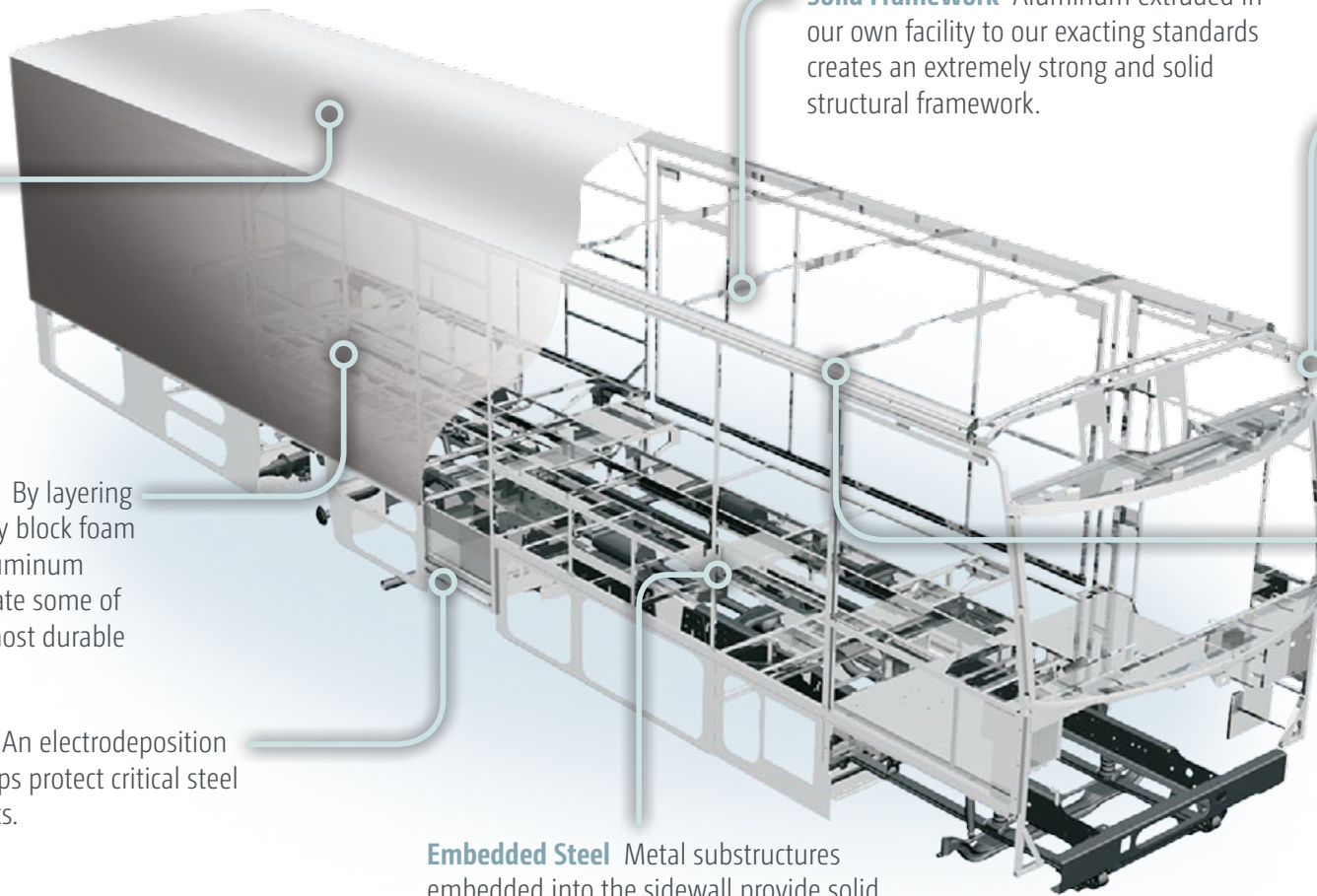
**E-Coating** An electrodeposition coating helps protect critical steel components.

**Embedded Steel** Metal substructures embedded into the sidewall provide solid attachment points to keep cabinets and appliances mounted securely in place.

**Solid Framework** Aluminum extruded in our own facility to our exacting standards creates an extremely strong and solid structural framework.

**Laser-Cut Tubing** Precision laser cutters create precise joints in structural steel that are stronger and require less welding.

**Interlocking Joints** Specially engineered interlocking joints connect the floor, sidewalls and roof where competitors often rely on simple screws to bear the weight.



# SUPER STRUCTURE

BUILT TO LAST

Every SunCruiser is built to Winnebago Industries'® legendary SuperStructure construction standards. It's a process developed and refined over more than 50 years of building some of the strongest, most durable coaches in the industry.



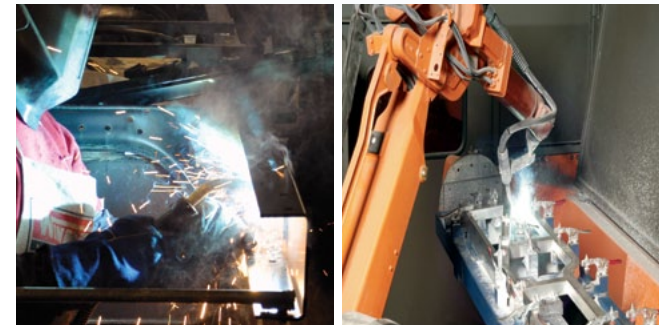
**TESTING** Before rolling out of our factories, every coach undergoes an extensive 113-point inspection. Each coach also passes a high-pressure water test that simulates rain at a rate of 50-inches per hour to check for leaks. During the design process, computer simulations, our physical testing center and rigorous test track ensure each model is built to last.



**DETAILS** At Winnebago Industries, we treat the features you can't see with the same care as the ones you can. Look in the access panels of some of our competitors' coaches and you'll see loose insulation and wires haphazardly strewn about. Winnebago Industries maintains a clean fit and finish throughout so your coach will last for the long haul.



**BUILT IN-HOUSE** We extrude our own aluminum. We rotocast our own plastic components. In fact, we manufacture most of our own parts so they are designed to fit the space, rather than fitting the space to an awkward off-the-shelf component size.



**SUPER  
STRUCTURE**  
BUILT TO LAST

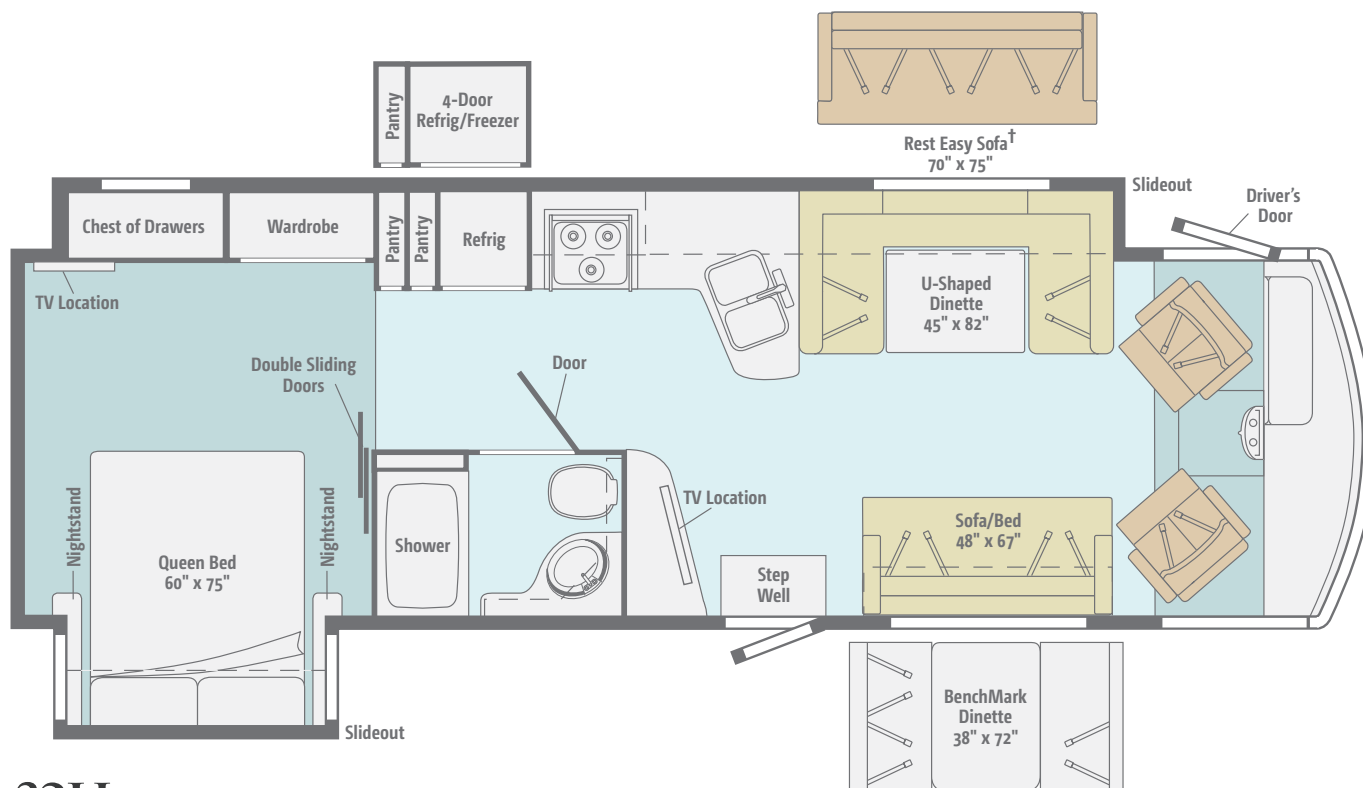
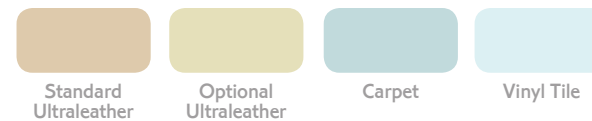
Visit [BetterBuiltRVs.com](http://BetterBuiltRVs.com) to gain real insight into what goes into a Winnebago Industries motor home.

**TAKE A TOUR** We're proud of our processes, state-of-the-art facilities and the people who make Winnebago Industries number one. We invite you to visit our complex in Forest City, Iowa, for a first-hand look at the dedication and technology behind every motor home we build.





Dimensions shown are for sleeping space only and may vary due to styling differences. Dashed lines denote overhead storage areas. Floorplans and specifications are also available online at [Goltasca.com](http://Goltasca.com).



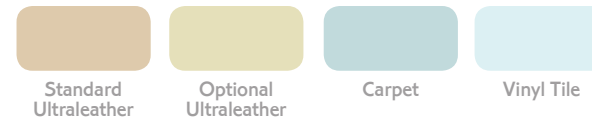
### 32H

A full-wall slide opens up a large living area with a U-shaped dinette, sofa/bed, swivel cab seats and a host of options to personalize your coach.

† Available with single or dual controls.  
Dual-control option includes only two seat belts.

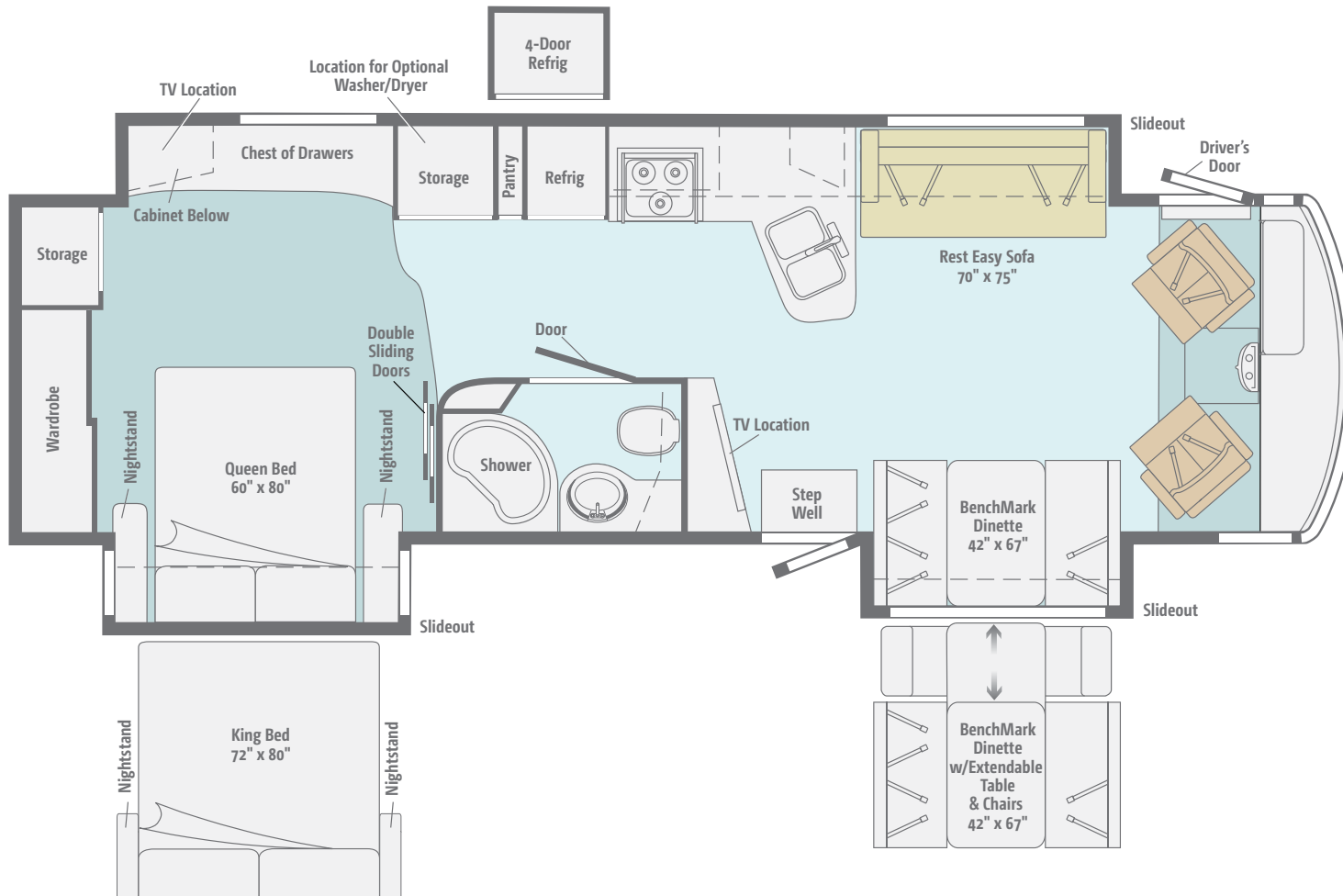


Dimensions shown are for sleeping space only and may vary due to styling differences. Dashed lines denote overhead storage areas. Floorplans and specifications are also available online at [Goltasca.com](http://Goltasca.com).




### 35P

The full-wall slideout pairs with bedroom and dinette slideouts to create a very generous kitchen and a spacious bedroom with an available king bed.



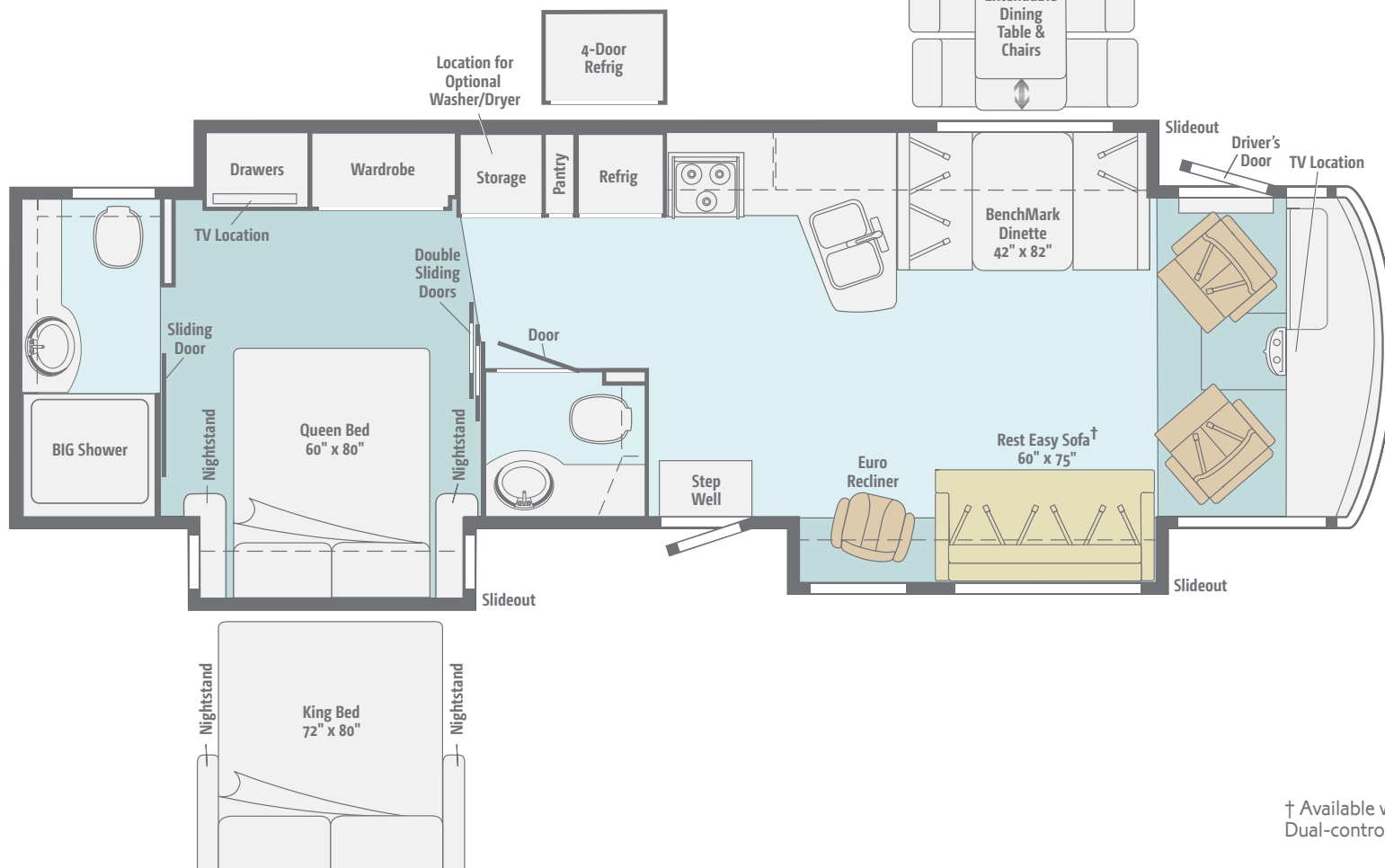


Dimensions shown are for sleeping space only and may vary due to styling differences. Dashed lines denote overhead storage areas. Floorplans and specifications are also available online at [Goltasca.com](http://Goltasca.com).

			
Standard Ultraleather	Optional Ultraleather	Carpet	Vinyl Tile

### 37F

A private master bathroom and separate guest bath highlight this open floorplan with your choice of three dining options.



† Available with single or dual controls. Dual-control option includes only two seat belts.

Choose from three fabric collections. Upgrade to Ultraleather™ furniture for luxurious comfort that is both durable and easy to clean. Traditional-style cabinetry comes in elegant Honey Cherry, Forest Cherry or Coffee-Glazed Vienna Maple finishes, all with Satin Nickel hardware that creates a warm, inviting interior.

### Opal



Main



Parchment Ultraleather



Accent



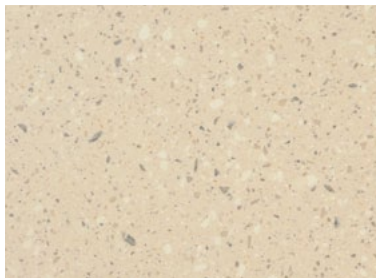
Bedsread



Vinyl Tile



Carpet



Fossil Corian Countertop



Lotus Silver Wall Board



Honey Cherry



Forest Cherry



Coffee-Glazed  
Vienna Maple

Fabrics and carpets may change without notice or obligation.



Choose from three fabric collections. Upgrade to Ultraleather™ furniture for luxurious comfort that is both durable and easy to clean. Traditional-style cabinetry comes in elegant Honey Cherry, Forest Cherry or Coffee-Glazed Vienna Maple finishes, all with Satin Nickel hardware that creates a warm, inviting interior.

### Athena



Main



Briarwood Ultraleather



Accent



Bedspread



Vinyl Tile



Carpet



Fawn Corian Countertop



Birchwood Pecan Wall Board



Honey Cherry



Forest Cherry



Coffee-Glazed  
Vienna Maple

Fabrics and carpets may change without notice or obligation.

Choose from three fabric collections. Upgrade to Ultraleather™ furniture for luxurious comfort that is both durable and easy to clean. Traditional-style cabinetry comes in elegant Honey Cherry, Forest Cherry or Coffee-Glazed Vienna Maple finishes, all with Satin Nickel hardware that creates a warm, inviting interior.

### Westcott



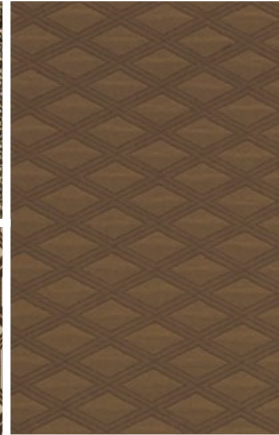
Main



Surfside Ultraleather



Accent



Bedspread



Vinyl Tile



Carpet



Cottage Lane Corian Countertop



Waldorf Sierra Wall Board



Honey Cherry



Forest Cherry



Coffee-Glazed  
Vienna Maple

Fabrics and carpets may change without notice or obligation.



Standard full-body paint makes a bold first impression.



Dark Silver  
FULL-BODY PAINT



Mojave  
FULL-BODY PAINT

Standard full-body paint makes a bold first impression.



Sandalwood  
FULL-BODY PAINT



Steel  
FULL-BODY PAINT



### Weights & Measures

	32H	35P	37F
<b>Length</b>	32'11"	35'6"	37'5"
<b>Exterior Height<sup>1</sup></b>	12'8"	12'8"	12'8"
<b>Exterior Width<sup>2</sup></b>	8'5.5"	8'5.5"	8'5.5"
<b>Exterior Storage<sup>3</sup> (cu. ft.)</b>	112.3	125.5	125.4
<b>Awning Length</b>	17'	17'	18'
<b>Interior Height</b>	7'	7'	7'
<b>Interior Width</b>	8'0.5"	8'0.5"	8'0.5"
<b>Freshwater Capacity w/Heater<sup>4</sup> (gal.)</b>	88	88	88
<b>Holding Tank Capacity - Black/Gray<sup>4</sup> (gal.)</b>	43/47	43/57	52/71
<b>LP Capacity<sup>5</sup> (gal.)</b>	23	28	28
<b>Fuel Capacity (gal.)</b>	80	80	80
<b>GCWR<sup>6</sup> (lbs.)</b>	26,000 <sup>A</sup>	26,000 <sup>A</sup> /30,000 <sup>B</sup>	30,000 <sup>B</sup>
<b>GVWR (lbs.)</b>	22,000 <sup>A</sup>	22,000 <sup>A</sup> /24,000 <sup>B</sup>	24,000 <sup>B</sup>
<b>GAWR - Front (lbs.)</b>	8,000 <sup>A</sup>	8,000 <sup>A</sup> /9,000 <sup>B</sup>	9,000 <sup>B</sup>
<b>GAWR - Rear (lbs.)</b>	15,000 <sup>A</sup>	15,000 <sup>A</sup> /15,500 <sup>B</sup>	15,500 <sup>B</sup>
<b>Wheelbase</b>	220"	228"	248"

<sup>A</sup> Ford F53 22,000-lb. Chassis w/22.5" tires

<sup>B</sup> Ford F53 24,000-lb. Chassis w/22.5" tires

## CHASSIS

### Ford® F53 22,000-lb. Chassis (32H, 35P)

- 362-hp 6.8L V10 SEFI Triton® engine
- TorqShift™ 5-speed automatic overdrive transmission w/tow haul
- Hydro-Max™ brakes w/ABS, 175-amp. alternator

### Ford F53 24,000-lb. Chassis (37F)

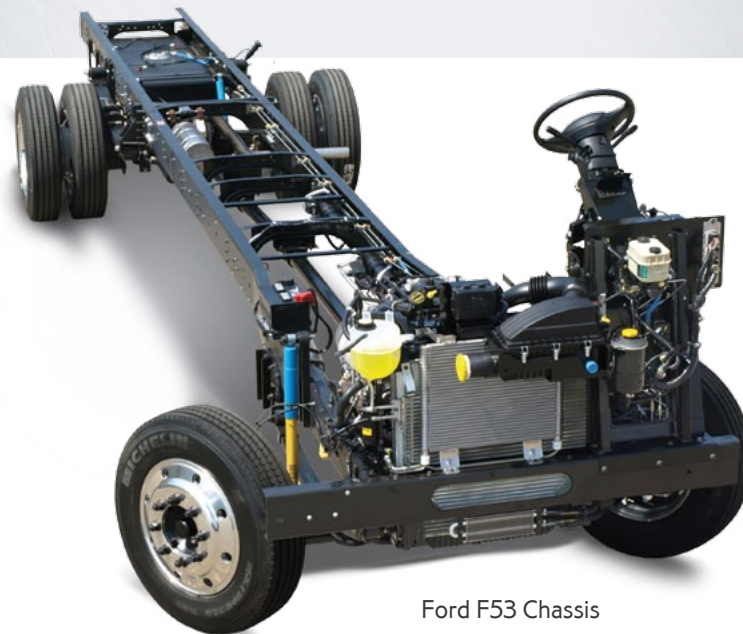
**Trailer Hitch<sup>6</sup>** 5,000-lb. drawbar/500-lb. maximum vertical tongue weight w/7-pin connector

**Stylized aluminum wheels**

**Hydraulic leveling jacks** w/3-position controls

### Optional Equipment

**Ford F53 24,000-lb. Chassis (35P)**



Ford F53 Chassis

## Cab Conveniences

**RV Radio®/Rearview Monitor System 6.5"** LCD color touch screen, CD player, weather band, remote, iPod®/MP3 input, rear color camera

**Chassis/house battery radio power switch**

**Cab Seats** adjustable armrests, lumbar support, multi-adjustable recline and swivel/slide

**6-way power-assist driver seat**

**Defroster fans**

**Cab sound control package**

**Cruise control**

**12-volt powerpoints**

**Map lights**

**Power steering w/tilt wheel**

**Dash workstation**

**C.B. wire prep kit**

**Power mirrors w/defrost**

**MCD American Duo® solar/blackout powered front shades, privacy curtain for driver and passenger windows**

**Sideview video color camera system**

**Light-filtering roller shades for driver and passenger windows**

### Optional Equipment

**Sirius® satellite radio, iPod interface connector, receiver**

**Passenger seat w/footrest (35P, 37F)**

## Interior

**32" LCD TV (32H, 37F)**

**40" LCD TV (35P)**

**Digital HDTV amplified antenna system**

**Blu-Ray® Home Theater Sound System** amplifier, DVD player, receiver, 5 speakers and subwoofer

**OnePlace® systems center**

**Satellite system ready, including bedroom TV**

**MCD American Duo® solar/blackout roller shades** (lounge, dinette, bedroom and 37F master bath)

**Tinted dual-glazed/thermo-insulated windows**

**Soft vinyl ceilings**

Key-activated slideroom master lock switch  
HDMI 4x4 Matrix central video selection system

Powered ventilator fan (kitchen)

Powered roof vent (bath)

### Optional Equipment

Dining table/buffet/chairs w/retractable  
40" LCD TV (37F)

King-Dome® automatic satellite dish

King-Dome in-motion satellite dish

Winegard® Trav'ler® automatic multi-satellite antenna

Stackable washer/dryer (35P, 37F)

Vinyl tile throughout (slideouts and cab are carpeted)

## Kitchen

Corian® solid-surface countertop, flip-up extension and backsplash

Sharp® stainless steel microwave/convection oven w/range fan

3-burner range top w/storage below

Corian sink and range covers

Norcold® 2-door refrigerator/freezer

Cold water filtration system

### Optional Equipment

3-burner range w/oven

Norcold 2-door refrigerator/freezer w/icemaker

Norcold 4-door refrigerator/freezer w/icemaker

## Bath

Textured glass shower door

Flexible showerhead

Corian countertop

Skylight (32H, 35P)

Porcelain toilet(s)

Water pump switch(es)

## Bedroom

Powered queen bed w/Ideal Rest® Natural Reserve digital comfort control mattress w/remotes (37F)

Queen bed w/innerspring mattress, storage below (32H, 35P)

22" LCD TV (32H)

26" LCD TV (35P, 37F)

Bedsread, pillow shams and pillows

### Optional Equipment

Queen Ideal Rest Natural Reserve digital comfort control mattress w/remotes (32H, 35P)

King Ideal Rest Natural Reserve digital comfort control mattress w/remotes (35P)

King bed w/innerspring mattress and access to storage below (35P)

Powered king bed w/Ideal Rest Natural Reserve digital comfort control mattress w/remotes (37F)

Ceiling fan

## Exterior

Driver's side service light

TriMark® KeyOne™ lock system

Lower front protective mask

Porch light

Electric entrance steps

Ladder

Front and rear mud flaps

Electric patio awning w/metal wrap and WeatherMAX™ fabric

Lighted storage compartments (in select compartments)

### Optional Equipment

Exterior Entertainment Center 32" LCD TV

## Heating & Cooling System

35,000 BTU low-profile furnace (32H)

40,000 BTU low-profile furnace (35P, 37F)

TrueAir® Maximum Comfort A/C two 13,500 BTU, low-profile roof air conditioners w/heat pumps

## Electrical System

AC/DC distribution system

55-amp. converter/charger

Service Center cable TV input, 50-amp. power cord, QuickPort® service connection hatch, portable satellite dish hookup

Exterior AC duplex receptacle

Exterior antenna jack

5,500-watt Cummins Onan® Marquis Gold™ generator

1,000-watt inverter w/remote panel

PowerLine® Energy Management System

Auxiliary start circuit

Two deep-cycle Group 31 batteries

Battery disconnect systems (coach and chassis)

Automatic dual-battery charge control

Generator/shoreline automatic changeover switch

### Optional Equipment

Cummins Onan Energy Command™ automatic generator start system

## Plumbing System

Service Center QuickPort service connection hatch, exterior wash station w/pump switch, pressurized city water hookup w/diverter valve, drainage valves, 10' sewer hose, black tank flushing system

LP Tank, permanent mount w/gauge

TrueLevel™ holding-tank monitoring system

On-demand water pump

Heated holding tank compartment

Winterization Package water heater bypass valve and siphon tube

10-gallon water heater, 110 V/LP gas w/motoraid and auxiliary auto heater

Gravity water tank fill w/lockable door

## Safety

Seat belts

Child seat tether anchor (dinette) (32H, 35P)

LP, smoke and carbon monoxide detectors

10 BC fire extinguisher

Ground fault interrupter

Fog lamps

High-mount brake lamps

## Warranty<sup>7</sup>

12-month/15,000-mile basic warranty<sup>8</sup>

36-month/36,000-mile limited warranty on structure<sup>8</sup>

10-year limited parts-and-labor warranty on roof skin<sup>8</sup>

1 The height of each model is measured to the top of the tallest standard feature and is based on the curb weight of a typically equipped unit. The actual height of your vehicle may vary by several inches depending on chassis or equipment variations. Please contact your dealer for further information.

2 SunCruiser floorplans feature a wide-body design – over 96". In making your purchase decision, you should be aware that some states restrict access on some or all state roads to 96" in body width. Before making your purchase decision, you should confirm the road usage laws in the states of interest to you.

3 The load capacity of your motor home is designated by weight, not by volume, so you cannot necessarily use all available space when loading your motor home.

4 Capacities are based on measurements prior to tank installation. Slight capacity variations can result due to installation applications.

5 Capacities shown are tank manufacturer's listed water capacity (W.C.). Actual filled LP capacity is 80% of listing due to overfilling prevention device on tank.

6 Actual towing capacity is dependent on your particular loading and towing circumstances, which includes the GVWR, GAWR, and GCWR as well as adequate trailer brakes. Please refer to the Operator's Manual of your vehicle for further towing information.

7 See separate chassis warranty.

8 See your dealer for complete warranty information.

NA Not Available

Not all items available in combination. See dealer for details.

Winnebago Industries® continuing program of product improvement makes specifications, equipment, model availability, and prices subject to change without notice. Comparisons to other motor homes are based on the most recent information available at printing.



GOITASCA.COM HAS  
GONE MOBILE



Learn more about the 2013 SunCruiser on your computer, smartphone or tablet. Visit [Goltasca.com/Suncruiser](http://Goltasca.com/Suncruiser) for the complete SunCruiser experience.

## PREFERRED CARE PROGRAM

We back our motor homes with best-in-class support both before and after the sale:

- 12-month/15,000-mile basic limited warranty
- 36-month/36,000-mile warranty on structure
- 10-year standard limited parts-and-labor roof skin warranty
- Complimentary 24-hour roadside assistance program



**TRIP**Saver  
FAST TRACK PARTS

- TripSaver® Fast Track Parts guarantees that in-stock warranty parts ship directly to your dealer within 24 hours
- National dealer service network



**Premium**  
ROADSIDE ASSISTANCE

## JOIN THE CLUB, JOIN THE FUN

As an Itasca motor home owner, you are invited to join the WIT Club. It's a great way to take full advantage of your new coach and meet fun-loving WIT Club members from across the country who make motor home adventures a way of life.



### Members enjoy:

- Caravans and rallies
- Newsletters
- Local and state group activities
- RV travel benefits

For more information, visit [WITclub.com](http://WITclub.com).



### Grand National Rally

Each year, thousands of Winnebago Industries motor home owners descend upon Forest City, Iowa, for the Grand National Rally. Rally goes connect with old friends and enjoy concerts, tours, activities and more in a weeklong celebration of the motor home lifestyle. Join us in July for a week you'll never forget.

