

2013 **Access | Access Premier**



Access Premier

CLICK TO NAVIGATE

Overview	Access Premier	Galley	Cab	SuperStructure	Interior Décor	Specifications	Warranty
Features	Lounge	Bedroom Bath	Exterior	Floorplans	Graphics & Paint	WIT Club	



On the cover: Access 31W Sandstorm Deluxe Graphics

Access Premier 26QP Sand Full-Body Paint

31W Grayson with Forest Cherry Cabinetry

More Variety. More Value.

You may find a motor home for a few dollars less, but with a generous list of standard amenities and the uncompromised construction quality of Winnebago Industries®, you won't find a better value than the 2013 Winnebago Access®. Five distinct floorplans offer a variety of sleeping, dining and living configurations to fit your needs and budget. For an even more refined experience, select the Access Premier package and enjoy upscale features such as stainless steel wheel liners, available full-body paint and a host of interior enhancements. Some say you get what you pay for in a motor home; but with the Winnebago Access and Access Premier, you get a whole lot more.

Why Access | Access Premier?

- Five floorplans
- Large rear trunk with recessed storage compartment (NA 24V, 31J/31JP)
- MCD® roller shades
- Rear bunk bed (31J/31JP)
- Standard 4,000-watt Cummins Onan® MicroQuiet™ gas generator
- Easy-access, low entrance eliminates the need for electric steps
- Available Ultraleather™
- Powered patio awning



Recognized Quality The RV Dealers Association bestows its annual Quality Circle Award based on dealer ratings to the manufacturers that provide exceptional products, service and support. Only one manufacturer has received this honor for sixteen consecutive years: Winnebago Industries®.

Best in Class

See how Winnebago Industries takes motor home design and function to the next level, and why we've earned the right to be called the Most Recognized Name in Motor Homes.®

Click on this icon throughout the brochure to link to more information on the web.



Night and Day The available, smoothly retracting *MCD American Duo*® Solar/Blackout Roller Shades let you control your light and privacy—no matter the time of day.



RV Radio® The available touch screen *RV Radio* features a CD player, MP3 input and doubles as the rearview monitor.



Instant Picnic Keep beverages on ice in the spacious *Rear Storage Compartment* with drain plug. It also works great to store loose gear and includes a center compartment cover that unfolds to create a six-foot table (NA 24V and 31J/31JP).



Easy In and Out The *Lowered Entrance Step* is designed for easy access and eliminates the need for an auxiliary entrance step.



Rest and Relax The available *Comfort Sofa Sleeper* quickly converts from a sofa into a comfortable bed that features a self-inflating mattress and pump that automatically reads mattress pressure to maintain your perfect setting (26Q/26QP, 31W/31WP).

Access Premier

Take your Access to the next level with the Access Premier Package. This popular upgrade package delivers more style, more comfort and more excitement to your Access.

	OPTIONAL ON ACCESS	STANDARD ON ACCESS PREMIER	OPTIONAL ON ACCESS PREMIER
Exterior Features			
Full fiberglass front cap		■	
Fiberglass running boards w/wheel lips		■	
Four available full-body paint packages			■
Deluxe graphics package	■	■	
Stainless steel wheel liners	■	■	
Interior Features			
Dash appliqué	■	■	
Soft vinyl ceiling		■	
Thermo-formed laminate countertops and galley backsplash		■	
BenchMark® full-comfort dinette		■	
Single-control galley and bath faucets		■	
Large double-door refrigerator w/raised panel stile-and-rail inserts		■	
Porcelain toilet		■	
Filtered cold water (galley)		■	
Interior Upgrade Package:	■	■	
Dream Dinette™ table			
Range cover			
Cab floor mats			
Bedroom window side valance treatment			
Sink covers			
Sofa throw pillows (2)			
MCD American Duo® solar/blackout roller shades			



BenchMark Full-Comfort Dinette

Innerspring cushions flip up to access large storage bins in the BenchMark full comfort dinette—standard with the Access Premier. The entire dinette easily converts into a comfortable sleeping space using the easily adjustable Dream Dinette table.



Full-Body Paint—Only Available With the Access Premier



31W Grayson with Forest Cherry Cabinetry

What's your idea of relaxation? The Access brings your ideas to life with five floorplans and a variety of furniture options to fit your plans for fun. Multi-purpose pieces such as the Comfort Sofa Sleeper expand your seating and sleeping capacity. And, if you select the Access Premier, you'll be surrounded by upscale amenities such as MCD American Duo solar/blackout roller shades and the BenchMark full-comfort dinette.



Available Front Overhead Entertainment Center



LCD TV on swivel bracket (26Q features a hinged bracket)

Serving up a delicious meal is a cinch in the complete galley. Upgrade the standard appliances to include an oven and a microwave/convection oven. The Access Premier package includes galley upgrades to the countertops, refrigerator and more that will bring a smile to your family cook's face.



31W Galley with Forest Cherry Cabinetry



26QP Galley with Coffee-Glazed Vienna Maple Cabinetry



Refrigerator | Freezer



26QP Pullout Pantry



Full-Extension Drawer Slides



26QP Bedroom

A queen bed comes standard in all Access models, with many offering a rear slideout for extra walk-around space. Families with kids will love the bunk beds in the 31J/31JP, which can even be equipped with individual DVD players and LCD monitors.



31W Wardrobe



31W Bathroom



Dash with Available Appliqué

While you drive, enjoy your favorite tunes on the RV Radio with CD player and weather band. Available upgrades include a touch screen interface with rearview monitor and Sirius® Satellite radio.



RV Radio | Rearview Monitor



Power Mirrors

Smart Storage™ design maximizes every square inch of storage space and the Winnebago Access 26Q, 31R and 31W have incredibly spacious and easy-to-access rear compartments. They even feature a recessed compartment with a drain plug where you can store damp gear or keep drinks on ice and a center compartment cover that folds out into a six-foot table. The standard electric patio awning creates some welcome shade for those lazy afternoons.

A 4,000-watt Cummins Onan® MicroQuiet™ generator and two deep-cycle batteries keep the power flowing when you are away from the campsite. The batteries slide out for easy maintenance and access.



Rear Storage Compartment Cover as Table



Two House Batteries on Pullout Tray



Recessed Storage Compartment

Fiberglass Roof The one-piece fiberglass roof is backed by a 10-year parts-and-labor roof skin warranty.

Rubber Can't Cut It Rubber roofs used by competitors can streak and degrade over time.

Thermo-Panel® Sidewalls By layering fiberglass and high-density block foam insulation with welded aluminum support structures, we create some of the industry's strongest, most durable and lightweight sidewalls.

E-Coating An electrodeposition coating helps protect critical steel components.

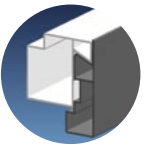
Embedded Steel Metal substructures embedded into the sidewall provide solid attachment points to keep cabinets and appliances mounted securely in place.

Solid Framework Aluminum extruded in our own facility to our exacting standards creates an extremely strong and solid structural framework.

Laser-Cut Tubing Precision laser cutters create precise joints in structural steel that are stronger and require less welding.



Interlocking Joints Specially engineered interlocking joints connect the floor, sidewalls and roof where competitors often rely on simple screws to bear the weight.



**SUPER
STRUCTURE**

BUILT TO LAST

Every coach—from our smallest Class C to our largest diesel pusher model—is built to Winnebago Industries® legendary SuperStructure construction standards. It's a process developed and refined over more than 50 years of building some of the strongest, most durable coaches in the industry.

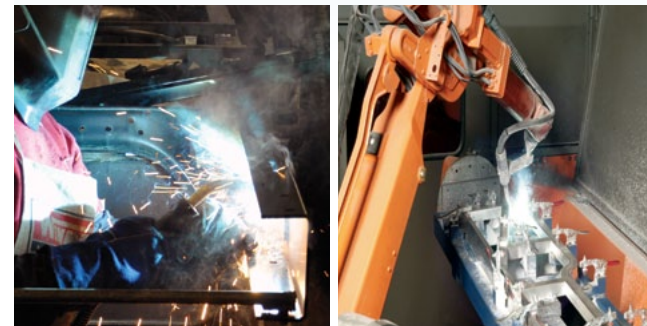
TESTING Before rolling out of our factories, every coach undergoes an extensive 113-point inspection. Each coach also passes a high-pressure water test that simulates rain at a rate of 50-inches per hour to check for leaks. During the design process, computer simulations, our physical testing center and rigorous test track ensure each model is built to last.



DETAILS At Winnebago Industries, we treat the features you can't see with the same care as the ones you can. Look in the access panels of some of our competitors' coaches and you'll see loose insulation and wires haphazardly strewn about. Winnebago Industries maintains a clean fit and finish throughout so your coach will last for the long haul.



BUILT IN-HOUSE We extrude our own aluminum. We rotocast our own plastic components. In fact, we manufacture most of our own parts so they are designed to fit the space, rather than fitting the space to an awkward off-the-shelf component size.



**SUPER
STRUCTURE**
BUILT TO LAST

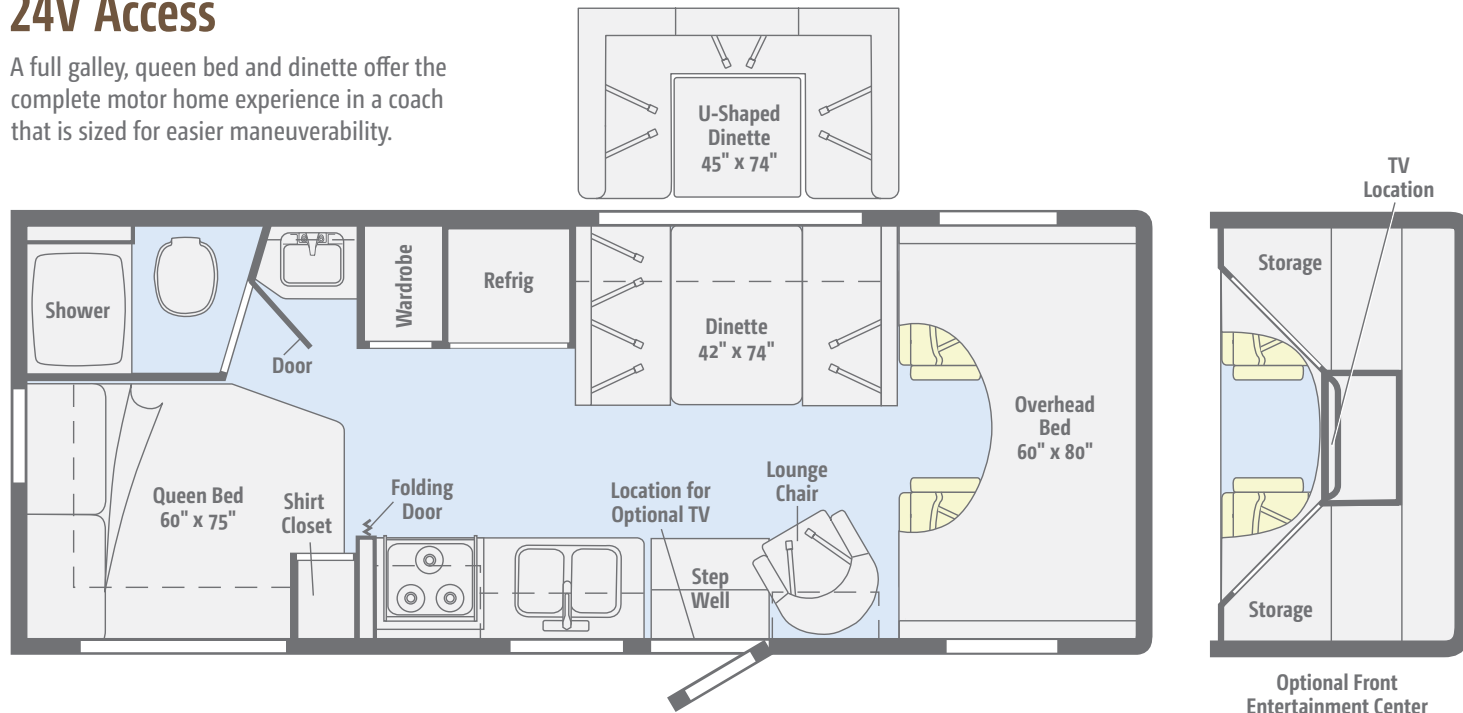
Visit BetterBuiltRVs.com to gain real insight into what goes into a Winnebago Industries motor home.

TAKE A TOUR We're proud of our processes, state-of-the-art facilities and the people who make Winnebago Industries number one. We invite you to visit our complex in Forest City, Iowa, for a first-hand look at the dedication and technology behind every motor home we build.



24V Access

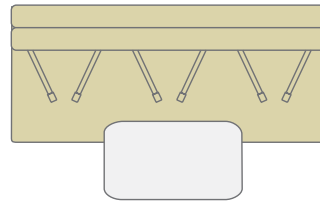
A full galley, queen bed and dinette offer the complete motor home experience in a coach that is sized for easier maneuverability.



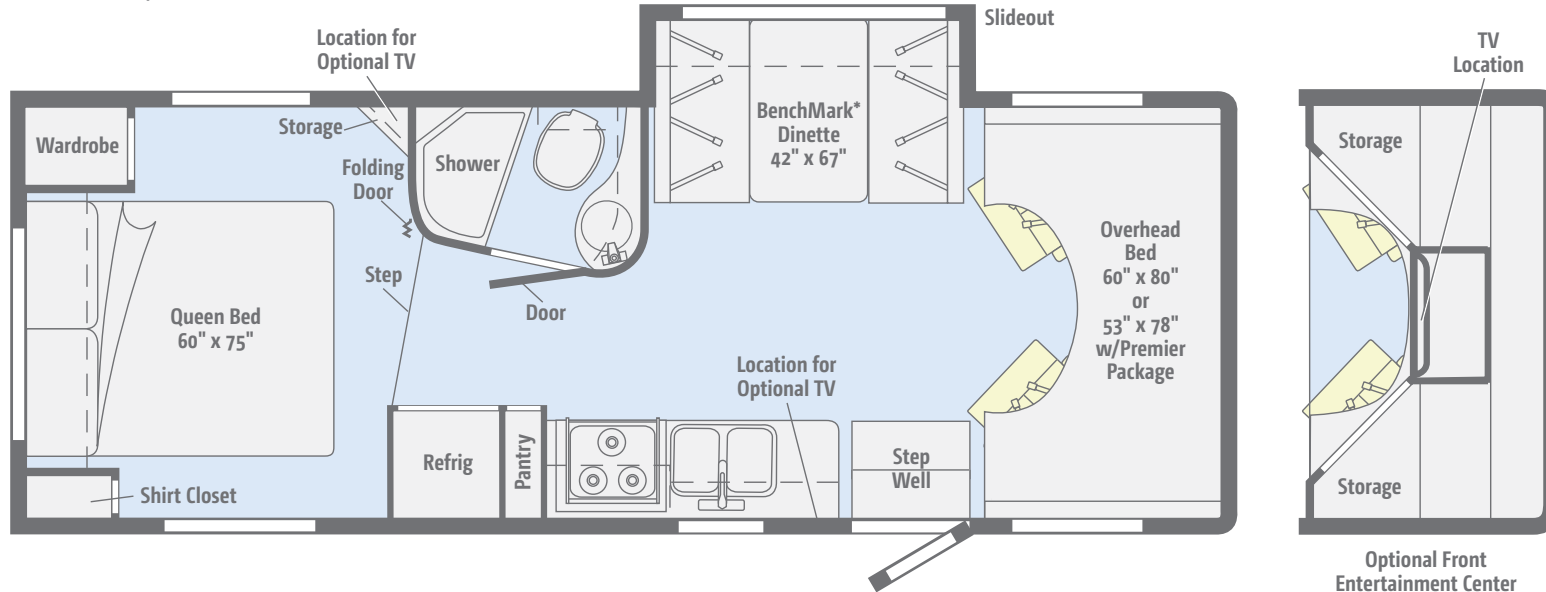
Dimensions shown are for sleeping space only and may vary due to styling differences. Dashed lines denote overhead storage areas. Floorplans and specifications are also available online at GoWinnebago.com.

26Q Access 26QP Access Premier

With cab seats that swivel to face the lounge and a slideout for the dinette or available Comfort Sofa Sleeper, the 26Q is a comfortable motor home with room to spare.



Comfort Sofa Sleeper w/Table 60" x 78"
(requires single overhead bed 53" x 80")



Standard Ultraleather	Optional Ultraleather	Vinyl

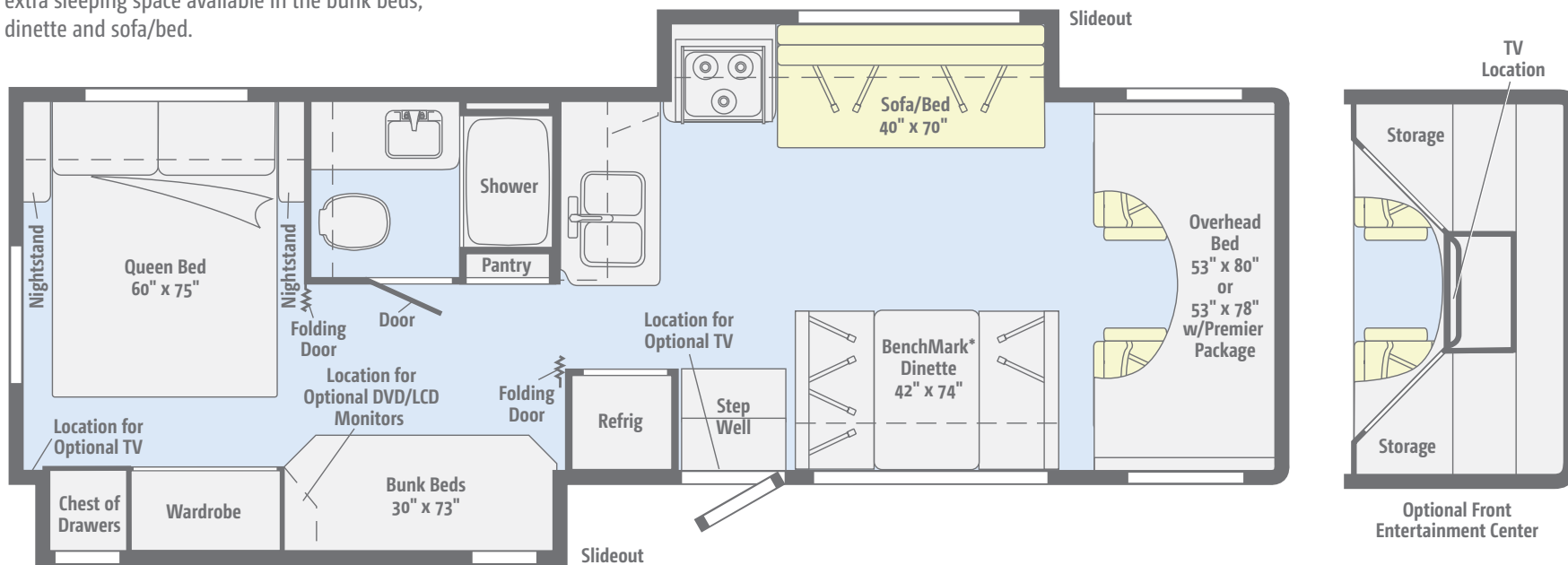
Dimensions shown are for sleeping space only and may vary due to styling differences. Dashed lines denote overhead storage areas. Floorplans and specifications are also available online at GoWinnebago.com.

* BenchMark available on Access Premier only

31J Access

31JP Access Premier

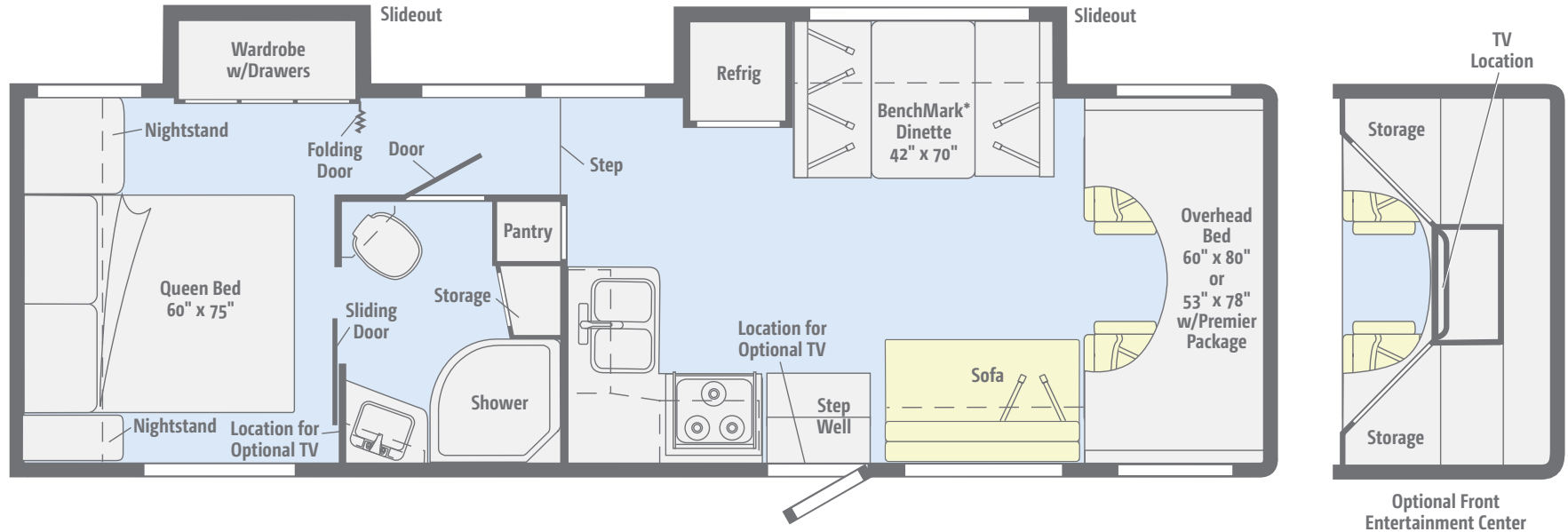
If you travel with kids or want a variety of sleeping options for guests, you'll love the 31J/31JP with extra sleeping space available in the bunk beds, dinette and sofa/bed.



Dimensions shown are for sleeping space only and may vary due to styling differences. Dashed lines denote overhead storage areas. Floorplans and specifications are also available online at GoWinnebago.com.

31R Access 31RP Access Premier

The lounge slideout and L-shaped galley create a large open area for fun and relaxation, which includes a sofa and available entertainment center. The spacious bedroom includes a wardrobe slideout and walk-through bathroom.



Optional Ultraleather

Vinyl

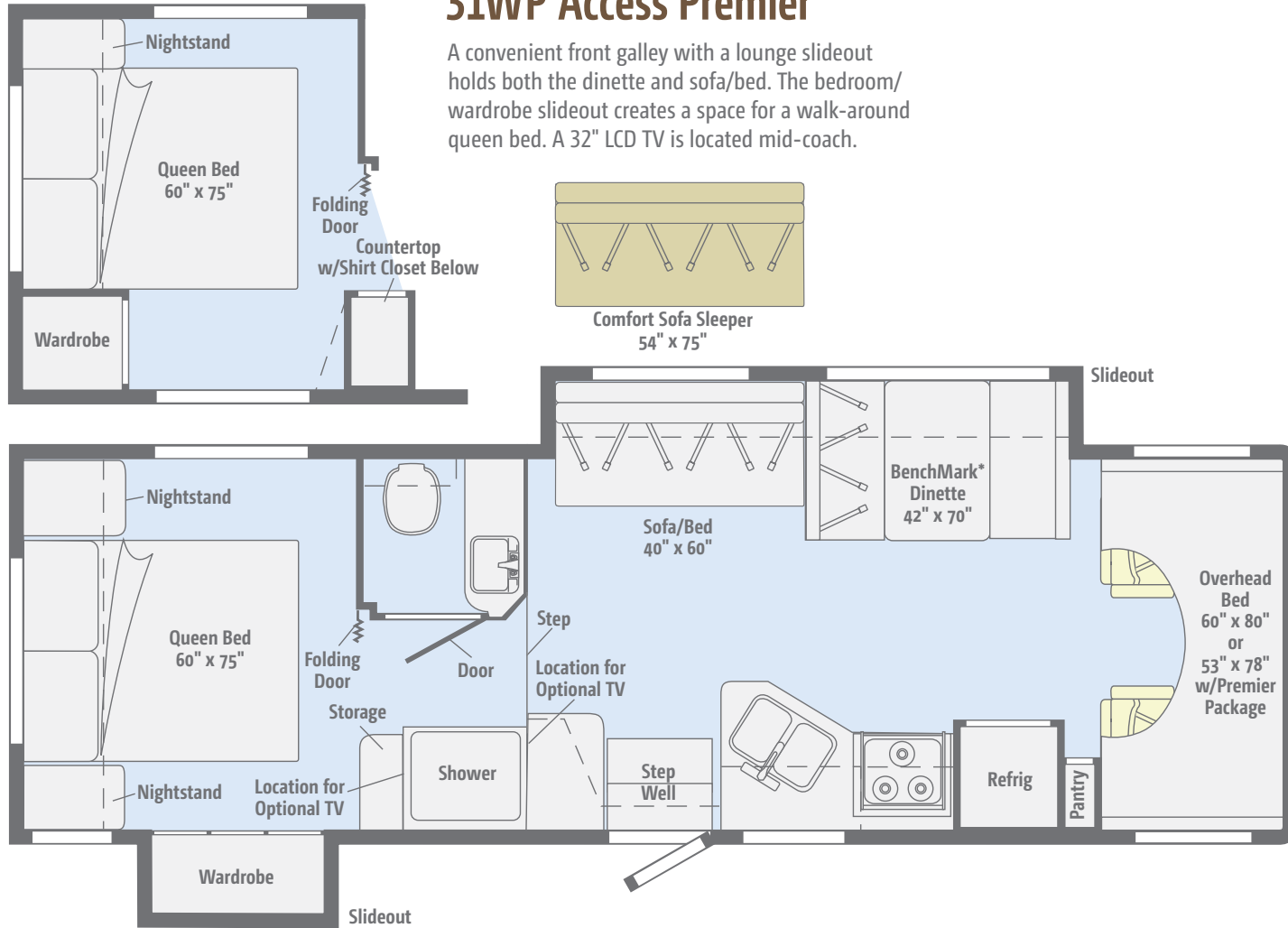
Dimensions shown are for sleeping space only and may vary due to styling differences. Dashed lines denote overhead storage areas. Floorplans and specifications are also available online at GoWinnebago.com.

* BenchMark available on Access Premier only

NEW

31W Access 31WP Access Premier

A convenient front galley with a lounge slideout holds both the dinette and sofa/bed. The bedroom/wardrobe slideout creates a space for a walk-around queen bed. A 32" LCD TV is located mid-coach.



Standard Ultraleather	Optional Ultraleather	Vinyl

Dimensions shown are for sleeping space only and may vary due to styling differences. Dashed lines denote overhead storage areas. Floorplans and specifications are also available online at GoWinnebago.com.

* BenchMark available on Access Premier only

Choose from three fabric collections with standard vinyl floorcovering or available carpet (NA 24V) in the lounge, dinette and bedroom. Upgrade to Ultraleather furniture for luxurious comfort that is both durable and easy to clean. The cabinetry comes in your choice of Forest Cherry or Coffee-Glazed Vienna Maple finish with Satin Nickel hardware for a warm, inviting interior.

Fairfax



Main



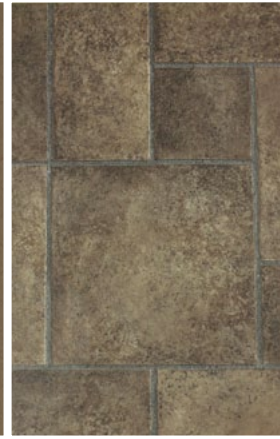
Barley Ultraleather



Accent



Bedspread



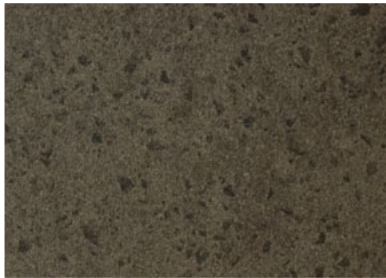
Vinyl



Carpet



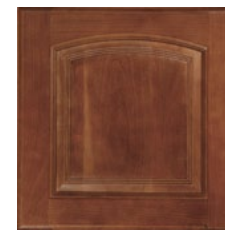
Deepstar Agate Countertop
Wilsonart Laminate
(Access)



Laguna Pebble Countertop
Omnova
(Access Premier)



Mineral Wall Board



Forest Cherry

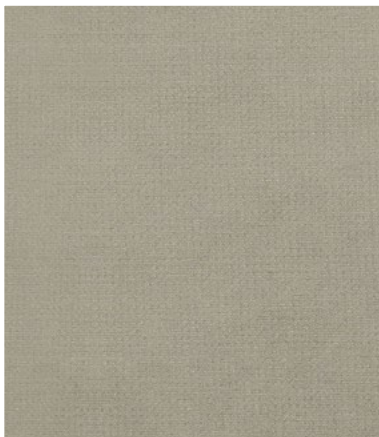


Coffee-Glazed
Vienna Maple

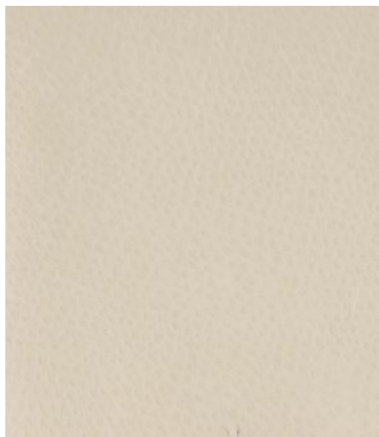
Fabrics and carpets may change without notice or obligation.

Choose from three fabric collections with standard vinyl floorcovering or available carpet (NA 24V) in the lounge, dinette and bedroom. Upgrade to Ultraleather furniture for luxurious comfort that is both durable and easy to clean. The cabinetry comes in your choice of Forest Cherry or Coffee-Glazed Vienna Maple finish with Satin Nickel hardware for a warm, inviting interior.

Grayson



Main



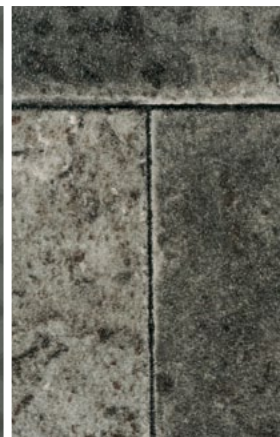
Stucco Ultraleather



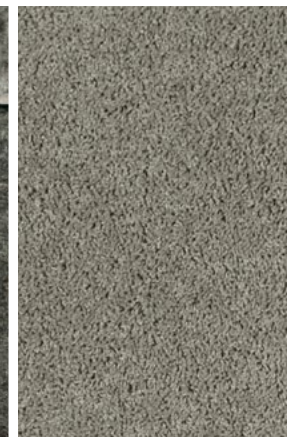
Accent



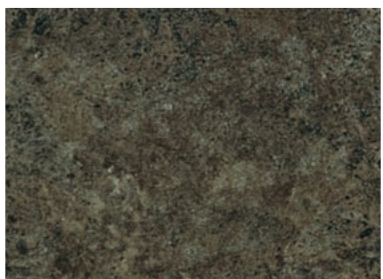
Bedsread



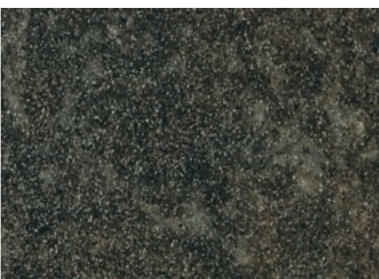
Vinyl



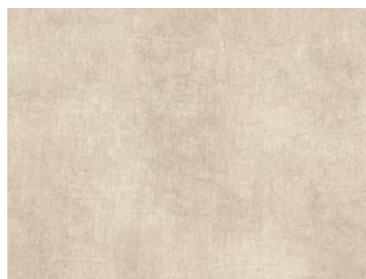
Carpet



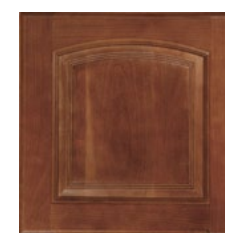
Alpine Passage Countertop
Wilsonart Laminate
(Access)



Mineral Geode Countertop
Omnova
(Access Premier)



Driftwood Wall Board



Forest Cherry



Coffee-Glazed
Vienna Maple

Fabrics and carpets may change without notice or obligation.

Choose from three fabric collections with standard vinyl floorcovering or available carpet (NA 24V) in the lounge, dinette and bedroom. Upgrade to Ultraleather furniture for luxurious comfort that is both durable and easy to clean. The cabinetry comes in your choice of Forest Cherry or Coffee-Glazed Vienna Maple finish with Satin Nickel hardware for a warm, inviting interior.

Sonoma



Main



Fields Ultraleather



Accent



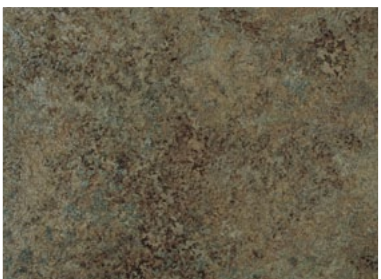
Bedspread



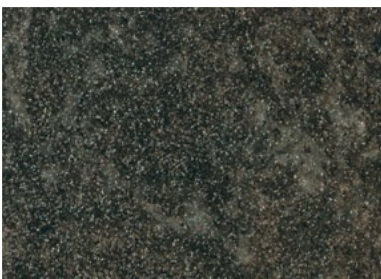
Vinyl



Carpet



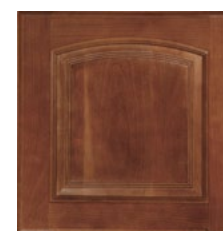
Deepstar Agate Countertop
Wilsonart Laminate
(Access)



Mineral Geode Countertop
Omnova
(Access Premier)



Birchwood Pecan Wall Board



Forest Cherry



Coffee-Glazed
Vienna Maple

Fabrics and carpets may change without notice or obligation.

The Access comes with standard graphics or available deluxe graphics. The Access Premier comes with deluxe graphics or available full-body paint.

Access Standard Graphics



Saddle



Harbor

Access | Access Premier Deluxe Graphics



Sandstorm



Platnicklium

The Access comes with standard graphics or available deluxe graphics. The Access Premier comes with deluxe graphics or available full-body paint.

Access Premier Full-Body Paint



Sand



Silver Sage



Dark Gray Mica



Dark Toreador

Weights & Measures

	24V	26Q/26QP	31J/31JP	31R/31RP	31W/31WP
Length	25'1"	27'11"	32'	32'	31'8"
Exterior Height ¹	11'1"	11'2"	11'1"	11'1"	11'1"
Exterior Width ²	8'5.5"	8'5.5"	8'5.5"	8'5.5"	8'5.5"
Exterior Storage ³ (cu. ft.)	42.5	79.2	73.3/72.2	83.7	87.2
Awning Length	11'6"	13'	10'6"	16'	15'
Interior Height	6'8"	6'10"	6'8"	6'10"	6'10"
Interior Width	8'	8'	8'	8'	8'
Freshwater Capacity w/Heater ⁴ (gal.)	40	40	40	40	40
Holding Tank Capacity - Black/Gray ⁴ (gal.)	37/35	30/30	30/40	43/40	41/40
LP Capacity ⁵ (gal.)	18	18	18	18	18
Fuel Capacity (gal.)	55	55	55	55	55
GCWR ⁶ (lbs.)	18,500 ^A /22,000 ^B	22,000 ^B	22,000 ^B	22,000 ^B	22,000 ^B
GVWR (lbs.)	11,500 ^A /14,500 ^B	14,500 ^B	14,500 ^B	14,500 ^B	14,500 ^B
GAWR - Front (lbs.)	4,600 ^A /5,000 ^B	5,000 ^B	5,000 ^B	5,000 ^B	5,000 ^B
GAWR - Rear (lbs.)	7,800 ^A /9,600 ^B	9,600 ^B	9,600 ^B	9,600 ^B	9,600 ^B
Wheelbase	158"	190"	220"	215"	220"

A Ford E350 Chassis B Ford E450 Chassis * 6'4" rear of coach

Chassis

Ford® E350 Chassis (24V)

- 305-hp 6.8L Super-Duty V10 SEFI Triton® engine
- TorqShift™ 5-speed automatic transmission w/overdrive
- 120-amp. alternator

Ford E450 Chassis (26Q/26QP, 31J/31JP, 31R/31RP, 31W/31WP)

- 305-hp 6.8L Super-Duty V10 SEFI Triton engine
- TorqShift 5-speed automatic transmission w/overdrive
- 120-amp. alternator

4-wheel ABS

7-pin trailer wiring

Trailer Hitch⁶ 5,000-lb. drawbar/350-lbs. max vertical tongue weight

Stainless steel wheel covers



Ford E450 Chassis

OPTIONAL EQUIPMENT

Ford E450 Chassis (24V)

- 305-hp 6.8L Super-Duty V10 SEFI Triton engine
- TorqShift 5-speed automatic transmission w/overdrive
- 120-amp. alternator

Stainless steel wheel liners

Rear auxiliary air springs (NA 24V)

Premier Package

(Available for 26QP, 31JP, 31RP, 31WP) Fiberglass front cap, deluxe graphics or available full-body paint, fiberglass running boards w/wheel lips, power mirrors w/defrost, powered patio awning, stainless steel wheel liners, soft vinyl ceiling, porcelain toilet, thermo-formed laminated countertops, galley backsplash, BenchMark® dinette w/Dream Dinette™ table, single-control galley and lavatory faucets, range and sink covers, large double-door refrigerator w/raised panel stile-and-rail insert, galley cold water filtration system, sofa throw pillows (2), side valance window treatment on bedroom windows, MCD American Duo® solar/blackout roller shades, dash appliqué, cab floor mats

Cab Conveniences

Cab Seats armrests, lumbar support and multi-adjustable slide/recline

Swivel/slide driver and passenger seats (26Q/26QP)

12-volt powerpoint

Power steering w/tilt and cruise control

Power door locks

Power mirrors w/defrost

Sunvisors

RV Radio® AM/FM stereo, weather band, CD player, remote, iPod®/MP3 input

OPTIONAL EQUIPMENT

Dash appliqué

RV Radio/Rearview Monitor System 6.5" LCD touch screen color monitor, remote, iPod/MP3 input, color rear camera w/one-way audio

Sirius® Satellite System receiver, iPod interface connection

Interior

Amplified digital TV antenna system

Satellite system ready

MCD American Solo® blackout roller shades (lounge, dinette and bedroom)

Mini blinds (galley)

Systems monitor panel

Roof vent(s) (lounge/bunk area)

Powered roof vent (bath)

Cab divider curtain (NA 26Q/26QP)

Front wraparound curtain (26Q/26QP)

Bunk privacy curtain

Bunk ladder

Tinted windows

Key-activated slideroom master lock switch (NA 24V)

OPTIONAL EQUIPMENT

Access Upgrade Package Dream Dinette table, range cover, sink covers (2), sofa throw pillows (2), MCD American Duo solar/blackout roller shades, side valance window treatment on bedroom window, cab floor mats

26" DC, LCD TV w/AM/FM radio, alarm clock, CD/DVD player and video selection system

Carpet in lounge, dining area and bedroom (NA 24V)

Front Overhead Entertainment Center 32" LCD TV w/ remote, home theater sound system w/AM/FM receiver, DVD player, amplifier speakers, subwoofer and video selection system (NA 31W/31WP)

Entertainment System 32" LCD TV w/remote, swivel and telescoping bracket, home theater sound system w/AM/FM receiver, DVD player, amplifier, video selection system, speakers (5) and subwoofer (31W/31WP)

Tinted, dual-glazed thermo-insulated windows

Powered ventilator fan (lounge area)

Galley

Laminate countertops

Norcold® double-door refrigerator/freezer

Microwave oven

3-burner range top w/storage below

Vented range hood

OPTIONAL EQUIPMENT

3-burner range w/oven

Microwave/convection oven

Bath

Laminate countertop

Self-cleaning retractable shower screen (24V, 26Q/26QP, 31J/31JP)

Textured glass shower door (31R/31RP, 31W/31WP)

Flexible showerhead

Skylight

Water pump switch

Bedroom

Queen bed w/foam mattress and bedspread (removable mattress cover on 24V), pillows and shams

Bunk beds with foam mattresses, storage compartment, pillows w/shams and privacy curtains (31J/31JP)

OPTIONAL EQUIPMENT

22" DC, LCD TV (NA 24V)

8.5" LCD monitors (2) w/DVD and headphones in bunks (31J/31JP)

Exterior

Porch light

Stepwell light

Steel running boards

Rear mud flaps

Powered patio awning

Ladder

Recessed rotocast storage compartments drain plug, cover/30" x 72" folding table (26Q/26QP, 31R/31RP, 31W/31WP)

Premium high-gloss sidewall skin

Heating & Cooling System

13,500 BTU roof-mounted air conditioner (24V)

14,800 BTU roof-mounted air conditioner (26Q/26QP, 31J/31JP, 31R/31RP, 31W/31WP)

25,000 BTU low-profile furnace (24V)

30,000 BTU low-profile furnace (26Q/26QP, 31J/31JP, 31R/31RP, 31W/31WP)

Electrical System

AC/DC load center, 45-amp. converter/charger

30-amp. power cord

4,000-watt Cummins Onan® MicroQuiet™ gas generator

TV jack and DC receptacle near entrance door

Two deep-cycle, Group 31 batteries on pullout tray

Coach battery disconnect system

Auxiliary start circuit

Automatic dual-battery charge control

OPTIONAL EQUIPMENT

300-watt DC/AC inverter

Plumbing System

City water hookup

Lockable water tank fill

On-demand water pump

6-gallon LP water heater w/electronic ignition

Winterization Package water heater bypass valve and siphon tube

TrueLevel™ holding-tank monitoring system

Permanent-mount LP tank w/gauge

OPTIONAL EQUIPMENT

Heated electric drainage system

6-gallon 110 V/LP water heater w/electronic ignition, rear auto heater and Energy Management System (NA 24V)

6-gallon 110 V/LP water heater w/electronic ignition (24V)

Exterior wash station w/lighted pump switch

Safety

Seat belts

Dual airbags

Child seat tether anchor

LP, smoke and carbon monoxide detectors

10 BC fire extinguisher

Ground fault interrupter

High-mount brake lamp

Warranty⁷12-month/15,000-mile basic warranty⁸36-month/36,000-mile limited warranty on structure⁸10-year limited parts and labor warranty on roof skin⁸

- The height of each model is measured to the top of the tallest standard feature and is based on the curb weight of a typically equipped unit. The actual height of your vehicle may vary by several inches depending on chassis or equipment variations. Please contact your dealer for further information.
 - In making your purchase decision, you should be aware that some states restrict access on some or all state roads to 96" in body width. Before making your purchase decision, you should confirm the road usage laws in the states of interest to you.
 - The load capacity of your motor home is designated by weight, not by volume, so you cannot necessarily use all available space when loading your motor home.
 - Capacities are based on measurements prior to tank installation. Slight capacity variations can result due to installation applications.
 - Capacities shown are tank manufacturer's listed water capacity (W.C.). Actual filled LP capacity is 80% of listing due to overfilling prevention device on tank.
 - Actual towing capacity is dependent on your particular loading and towing circumstances which includes the GVWR, GAWR, and GCWR as well as adequate trailer brakes. Please refer to the Operator's Manual of your vehicle for further towing information.
 - See separate chassis warranty.
 - See your dealer for complete warranty information.
- NA Not Available

Not all items available in combination. See dealer for details.

Winnebago Industries® continuing program of product improvement makes specifications, equipment, model availability, and prices subject to change without notice. Comparisons to other motor homes are based on the most recent information available at printing.

GoWinnebago.com Has Gone Mobile

Learn more about the 2013 Access and Access Premier on your computer, smartphone or tablet. Visit GoWinnebago.com/Access for the complete Access experience.



PREFERRED CARE PROGRAM

We back our motor homes with best-in-class support both before *and* after the sale:

- 12-month/15,000-mile basic limited warranty
- 36-month/36,000-mile warranty on structure
- 10-year standard limited parts-and-labor roof skin warranty
- Complimentary 24-hour roadside assistance program



TRIPSaver
FAST TRACK PARTS

- TripSaver® Fast Track Parts guarantees that in-stock warranty parts ship directly to your dealer within 24 hours
- National dealer service network



Premium
ROADSIDE ASSISTANCE

Join the Club, Join the Fun

As a Winnebago motor home owner, you are invited to join the WIT Club. It's a great way to take full advantage of your new coach and meet fun-loving WIT Club members from across the country who make motor home adventures a way of life.



Members enjoy:

- Caravans and rallies
- Newsletters
- Local and state group activities
- RV travel benefits

See more on WITclub.com



Grand National Rally

Each year, thousands of Winnebago Industries motor home owners descend upon Forest City, Iowa, for the Grand National Rally. Rally goers connect with old friends and enjoy concerts, tours, activities and more in a weeklong celebration of the motor home lifestyle. Join us this July for a week you'll never forget.

