

2013 **Vista**



**CLICK TO NAVIGATE**

<a href="#">Overview</a>	<a href="#">Lounge</a>	<a href="#">Dining</a>	<a href="#">Bathroom</a>	<a href="#">Exterior</a>	<a href="#">Floorplans</a>	<a href="#">Graphics &amp; Paint</a>	<a href="#">WIT Club</a>
<a href="#">Features</a>	<a href="#">Galley</a>	<a href="#">Bedroom</a>	<a href="#">Cab</a>	<a href="#">SuperStructure</a>	<a href="#">Interior Décor</a>	<a href="#">Specifications</a>	<a href="#">Warranty</a>





On the cover: 35B Coffee Full-Body Paint

35B Sonoma with Coffee-Glazed Vienna Maple Cabinetry

## The Can't Miss Value Coach of 2013

Having great features, comfort, and quality at a great price—that's value. And you will be hard-pressed to find a coach that offers more value than the Winnebago Vista®, especially the all-new 26HE, a sporty new Vista designed for couples and families on the go. With five floorplans, including the new triple-slideout 27N, and the spacious 35B with bunk beds and a guest bath for the traveling family, there is a Vista you will be proud to call home. Key high-end features come standard, including soft Ultraleather™ cab seats and a powered patio awning. Floorplan variety, a long list of standard features, and Winnebago Industries' legendary construction quality make the Winnebago Vista "a can't miss value" for 2013.

### Why Vista?

- Five family-friendly floorplans
- Ultraleather™ swivel cab seats
- PowerLine® Energy Management System (35B, 35F)
- Queen bed
- MCD American Duo® solar/blackout roller shades (Solo® blackout roller shades 26HE)
- Bunk beds (35B)
- Master bath and guest half bath (35B, 35F)



**Recognized Quality** The RV Dealers Association bestows its annual Quality Circle Award based on dealer ratings to the manufacturers that provide exceptional products, service and support. Only one manufacturer has received this honor for sixteen consecutive years: Winnebago Industries.®



## Best in Class

See how Winnebago Industries takes motor home design and function to the next level, and why we've earned the right to be called the Most Recognized Name in Motor Homes.®



Click on this icon throughout the brochure to link to more information on the web.



**Residential Comfort** The *BIG Shower* is one of the industry's largest, featuring a wide opening and plenty of elbow room (35B, 35F).



**Workstation** The available *Dash Workstation* is the perfect place to plan your trip (NA 26HE).



**On the Mark** The available *BenchMark® Full-Comfort Dinette* offers premium innerspring seating that flips up to access hidden storage compartments. At night it converts into a cozy sleeping space (NA 26HE).



**Night and Day** The smoothly retracting *MCD American Duo® Solar/Blackout Roller Shades* let you control your light and privacy—no matter the time of day (Solo® blackout roller shades 26HE).



**Outdoor Fun** Listen to music or watch a movie under the stars, thanks to the available *Exterior Entertainment Center* with 32" LCD TV (27N, 35B, 35F).



**Power Protector** The *OnePlace® Systems Center* houses the *PowerLine® Energy Management System* (35B, 35F), which minimizes tripped campground circuits during periods of heavy usage.



**Rest and Relax** The available *Comfort Sofa Sleeper* quickly converts from a sofa into a comfortable bed with a self-inflating mattress that actively maintains proper comfort throughout the night (27N, 30T, 35B).





26HE Grayson with Forest Cherry Cabinetry

The Vista may come in different floorplans and sizes, but each one is loaded with creature comforts that make you feel at home. It starts with a large LCD TV and MCD American roller shades. Then, based on your floorplan, you can relax in the BenchMark full-comfort dinette, Comfort Sofa Sleeper or the Extendable Sectional Sofa. Welcome home.



35B Available Entertainment Center





35B Galley

Whether you travel alone or with your extended family, the full-featured galley lets you make meals that keep everyone smiling. Your Vista comes standard with a microwave oven, three-burner range top and a two-door refrigerator/freezer. Drawers open wide on full-extension slides for easy access and to maximize storage space. Add even more style with the available interior upgrade package.



Full-Extension Drawer Slides



35B Available 4-Door Refrigerator/Freezer and Pantry



26HE Galley





BenchMark Full-Comfort Dinette

Upgrade the standard dinette to the BenchMark full-comfort dinette for residential innerspring cushions that flip up to reveal hidden storage compartments (NA 26HE). The Dream Dinette™ table provides easy one-handed operation when raising and lowering the table and is included with the available interior upgrade package. If you prefer a dining table, the 30T has you covered with an available dining table/buffet, complete with a 42" LCD TV.







35B Bedroom



35B Bunk Beds

Several options present themselves in the bedroom. Families will appreciate the bunk beds and multiple bathrooms in the 35B. Those who want an expansive wardrobe will love the abundance of hanging closet space in the 27N. A dedicated 110-volt outlet in the bedroom is connected to the available 1,000-watt inverter (NA 26HE) to provide power without the need to run the generator when shoreline power is not available.



35B Wardrobe and LCD TV



26HE Bedroom





35B Master Bath



35B Guest Bath





Dash

Get comfortable in the fully-adjustable Ultraleather cab seats that recline and swivel to face the lounge. Everything you need is at your fingertips, including the rearview monitor with available sideview cameras (NA 26HE) and the controls for the standard hydraulic leveling jacks.



26HE Radio



Power Mirrors



Swivel Cab Seats



Powered patio awning. Automatic hydraulic leveling jacks. Standard Cummins Onan® generator. With all this and more, the campsite is your kingdom. There is even a wash station with hot and cold water supply in the Vista service center so you can rinse off sandy shoes or wash your pet (NA 26HE). Single paddle latches offer one-handed operation when opening cargo doors.



Patio Awning



Exterior Service Center



Single Paddle Latch



**Fiberglass Roof**

The crowned, one-piece fiberglass roof is backed by a 10-year parts-and-labor roof skin warranty.

**Rubber Can't Cut It**

Rubber roofs used by competitors can streak and degrade over time.

**Thermo-Panel® Sidewalls**

By layering fiberglass and high-density block foam insulation with welded aluminum support structures, we create some of the industry's strongest, most durable and lightweight sidewalls.

**E-Coating**

An electrodeposition coating helps protect critical steel components.

**Embedded Steel** Metal substructures embedded into the sidewall provide solid attachment points to keep cabinets and appliances mounted securely in place.

**Laser-Cut Tubing**

Precision laser cutters create precision joints in structural steel that are stronger and require less welding.

**Interlocking Joints**

Specially engineered interlocking joints connect the floor, sidewalls and roof where competitors often rely on simple screws to bear the weight.



**Solid Framework** Aluminum extruded in our own facility to our exacting standards creates an extremely strong and solid structural framework.

**SUPER  
STRUCTURE**  
BUILT TO LAST

Every coach—from our smallest Class C to our largest diesel pusher model—is built to Winnebago Industries® legendary SuperStructure construction standards. It's a process developed and refined over more than 50 years of building some of the strongest, most durable coaches in the industry.



## TESTING

Before rolling out of our factories, every coach undergoes an extensive 113-point inspection. Each coach also passes a high-pressure water test that simulates rain at a rate of 50-inches per hour to check for leaks. During the design process, computer simulations, our physical testing center and rigorous test track ensure each model is built to last.



## DETAILS

At Winnebago Industries, we treat the features you can't see with the same care as the ones you can. Look in the access panels of some of our competitors' coaches and you'll see loose insulation and wires haphazardly strewn about. Winnebago Industries maintains a clean fit and finish throughout so your coach will last for the long haul.



## BUILT IN-HOUSE

We extrude our own aluminum. We rotocast our own plastic components. In fact, we manufacture most of our own parts so they are designed to fit the space, rather than fitting the space to an awkward off-the-shelf component size.



**SUPER  
STRUCTURE**  
BUILT TO LAST



Visit [BetterBuiltRVs.com](http://BetterBuiltRVs.com) to gain real insight into what goes into a Winnebago Industries motor home.

## TAKE A TOUR

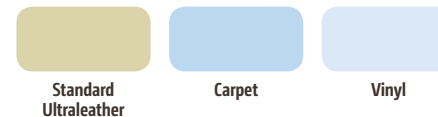
We're proud of our processes, state-of-the-art facilities and the people who make Winnebago Industries number one. We invite you to visit our complex in Forest City, Iowa, for a first-hand look at the dedication and technology behind every motor home we build.



GoWinnebago.com

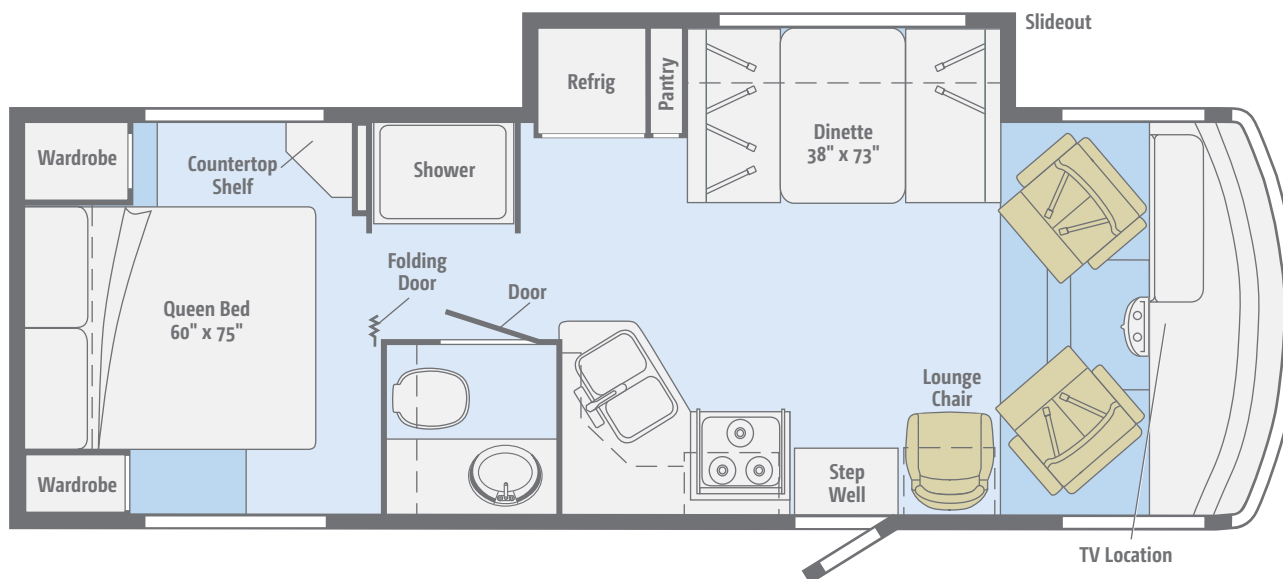


Dimensions shown are for sleeping space only and may vary due to styling differences. Dashed lines denote overhead storage areas. Floorplans and specifications are also available online at [GoWinnebago.com](http://GoWinnebago.com).



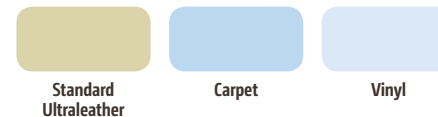
## NEW 26HE

This fantastic floorplan packs all the essentials for motor home adventures into a fun-to-drive coach.



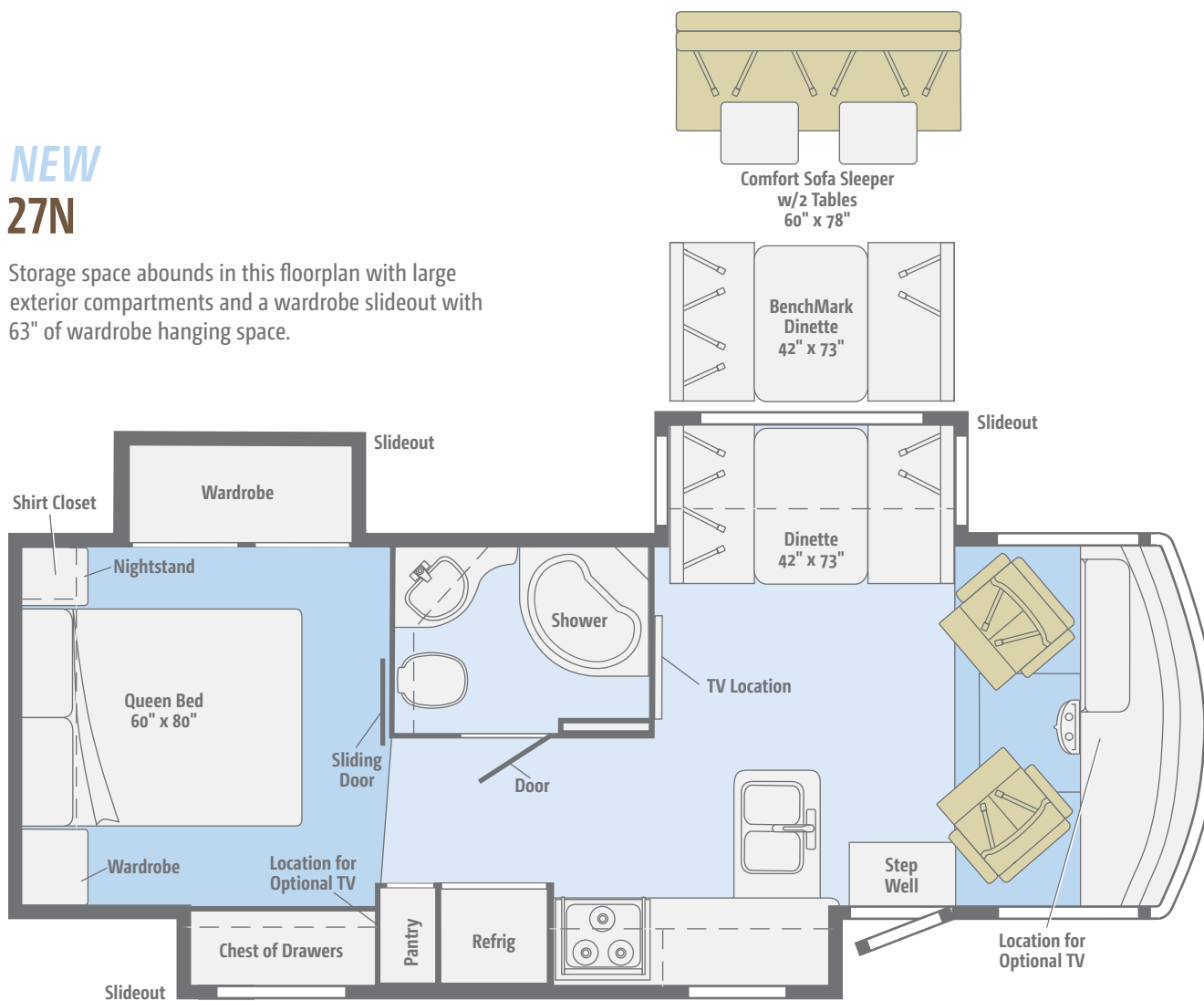


Dimensions shown are for sleeping space only and may vary due to styling differences. Dashed lines denote overhead storage areas. Floorplans and specifications are also available online at [GoWinnebago.com](http://GoWinnebago.com).



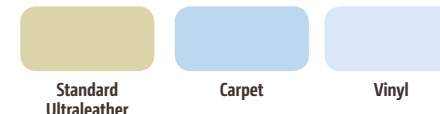
## NEW 27N

Storage space abounds in this floorplan with large exterior compartments and a wardrobe slideout with 63" of wardrobe hanging space.



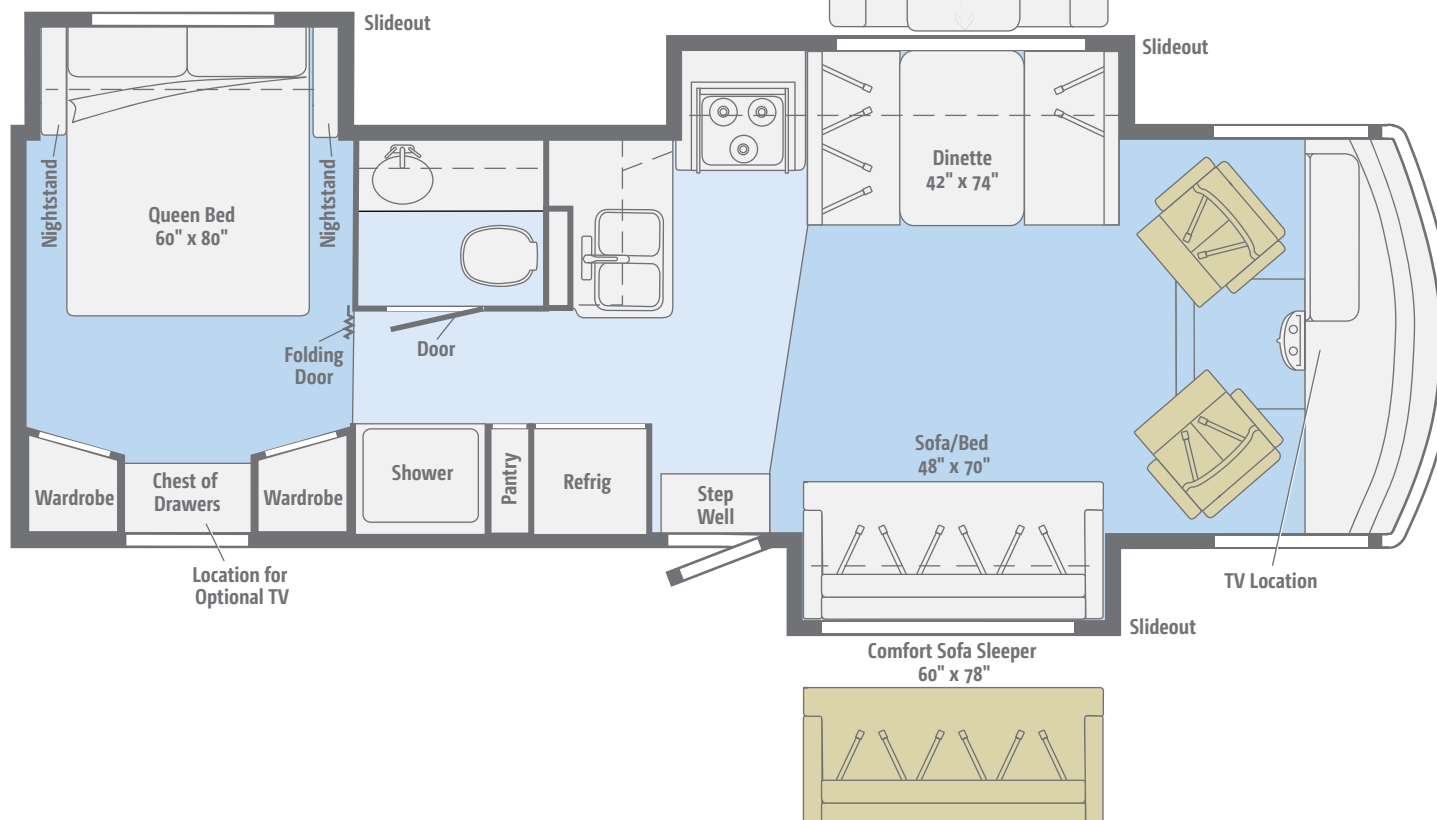


Dimensions shown are for sleeping space only and may vary due to styling differences. Dashed lines denote overhead storage areas. Floorplans and specifications are also available online at [GoWinnebago.com](http://GoWinnebago.com).



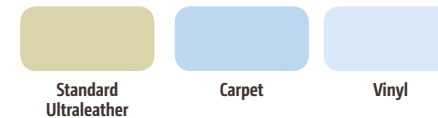
## 30T

Three slideouts, spacious wardrobe storage and your choice of sofa and dining options make the 30T one of our most popular floorplans.





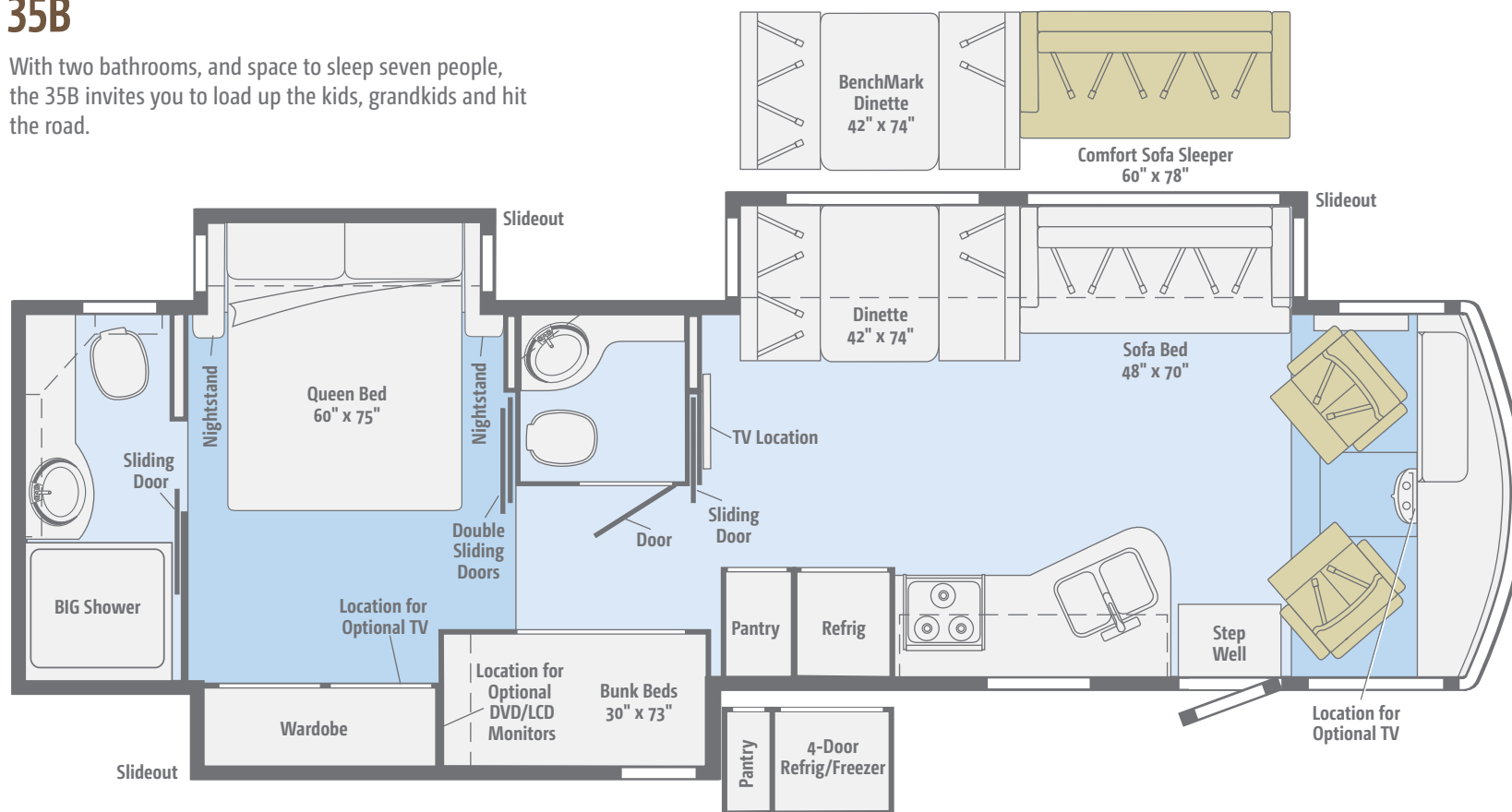
Dimensions shown are for sleeping space only and may vary due to styling differences. Dashed lines denote overhead storage areas. Floorplans and specifications are also available online at [GoWinnebago.com](http://GoWinnebago.com).



NEW

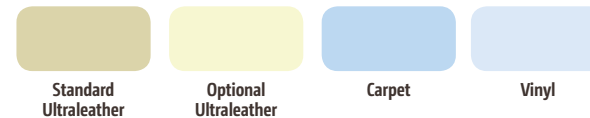
35B

With two bathrooms, and space to sleep seven people, the 35B invites you to load up the kids, grandkids and hit the road.



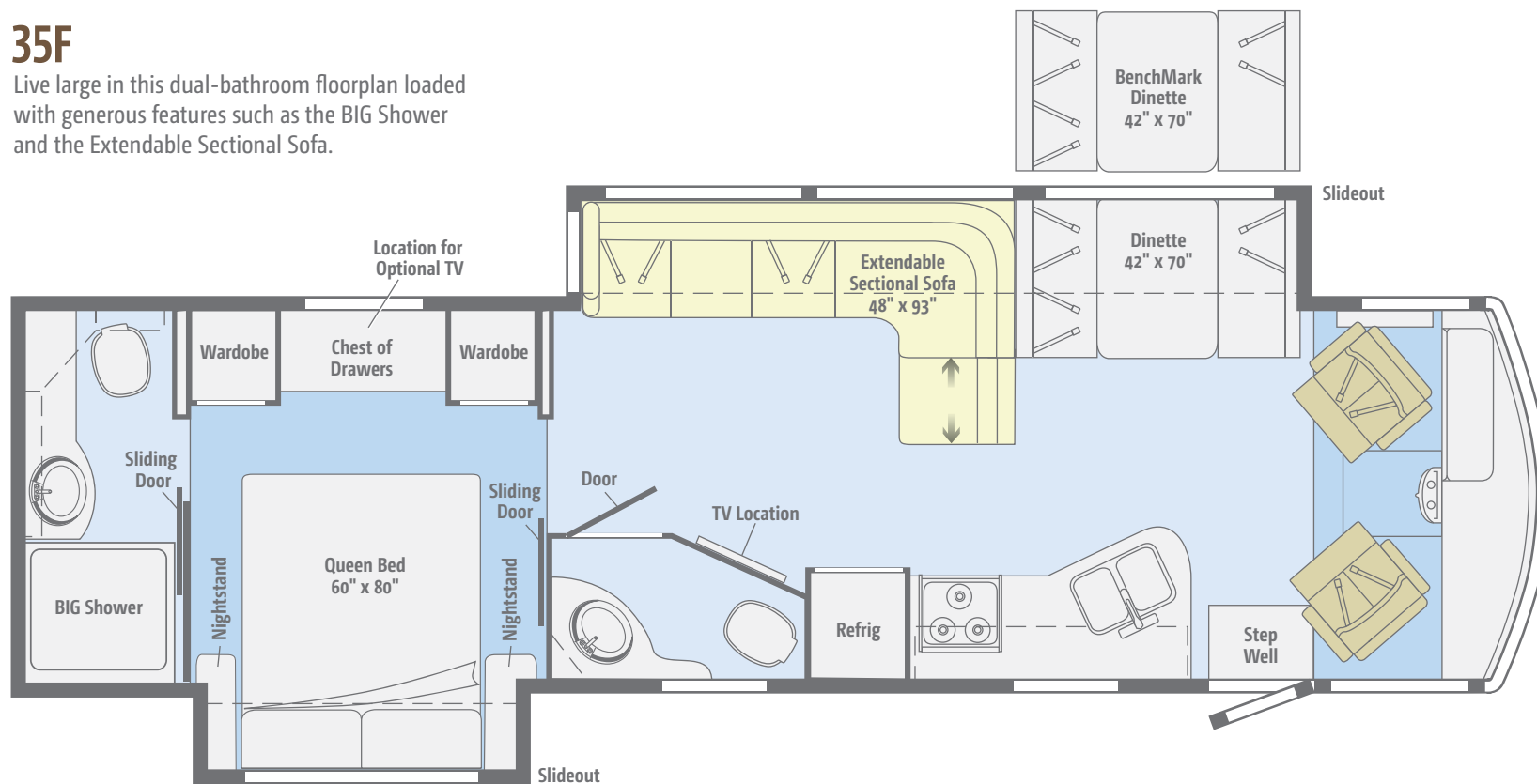


Dimensions shown are for sleeping space only and may vary due to styling differences. Dashed lines denote overhead storage areas. Floorplans and specifications are also available online at [GoWinnebago.com](http://GoWinnebago.com).



### 35F

Live large in this dual-bathroom floorplan loaded with generous features such as the BIG Shower and the Extendable Sectional Sofa.



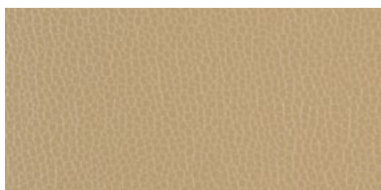


Choose from three fabric collections and two cabinet wood finishes, each with Satin Nickel hardware (one wood finish 26HE).

## Fairfax



Main



Barley Ultraleather (NA 26HE)



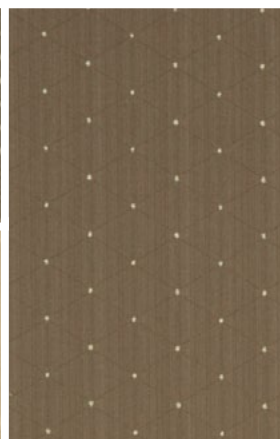
Sandbox Ultraleather (26HE)



Accent



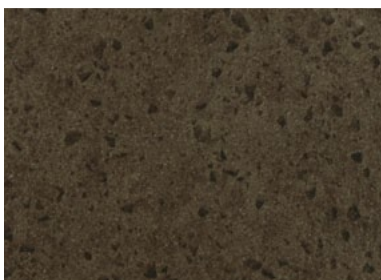
Bedspread



Vinyl



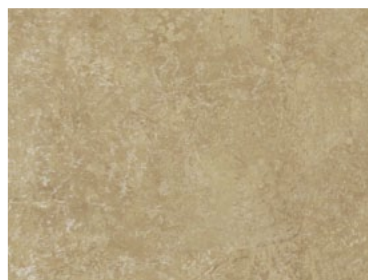
Carpet



Laguna Pebble  
Omnova Countertop  
(NA 26HE)



Deepstar Agate  
Wilsonart Laminate Countertop  
(26HE)



Mineral Wall Board



Forest Cherry



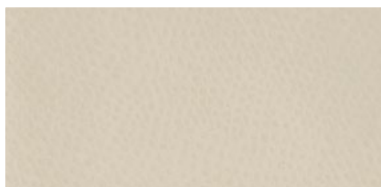
Coffee-Glazed  
Vienna Maple  
(NA 26HE)

Choose from three fabric collections and two cabinet wood finishes, each with Satin Nickel hardware (one wood finish 26HE)

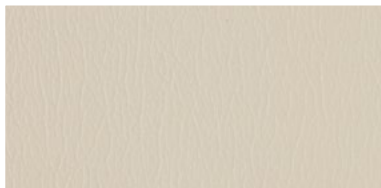
## Grayson



Main



Stucco Ultraleather (NA 26HE)



Arctic Ultraleather (26HE)



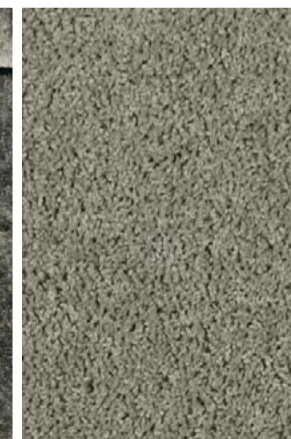
Accent



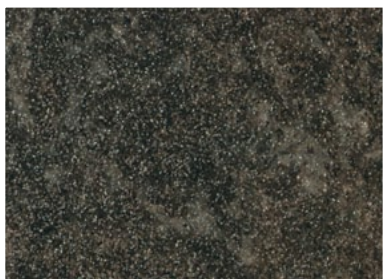
Bedspread



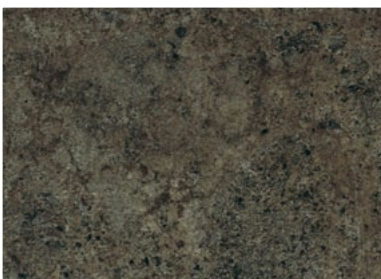
Vinyl



Carpet



Mineral Geode  
Omnova Countertop  
(NA 26HE)



Alpine Passage  
Wilsonart Laminate Countertop  
(26HE)



Driftwood Wall Board



Forest Cherry



Coffee-Glazed  
Vienna Maple  
(NA 26HE)



Choose from three fabric collections and two cabinet wood finishes, each with Satin Nickel hardware (one wood finish 26HE).

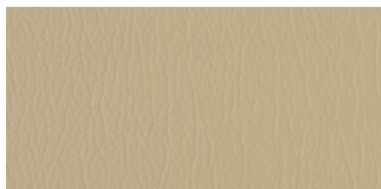
## Sonoma



Main



Fields Ultraleather (NA 26HE)



Sandbox Ultraleather (26HE)



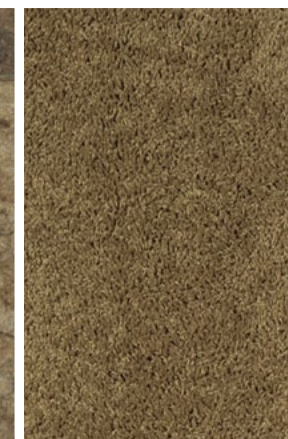
Accent



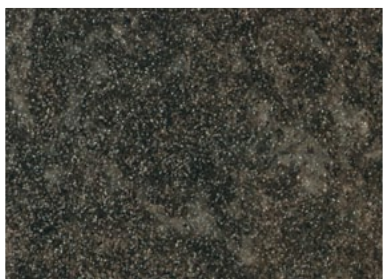
Bedspread



Vinyl



Carpet



Mineral Geode  
Omnova Countertop  
(NA 26HE)



Deepstar Agate  
Wilsonart Laminate Countertop  
(26HE)



Birchwood Pecan Wall Board



Forest Cherry



Coffee-Glazed  
Vienna Maple  
(NA 26HE)

The Vista comes with standard graphics. Upgrade to deluxe graphics or full-body paint (NA 26HE).



**Stormy Gray Metallic - 26HE only**  
STANDARD GRAPHICS



**Tabasco Pearl Metallic**  
STANDARD GRAPHICS



**Titanium**  
DELUXE GRAPHICS



**Bronzemist**  
DELUXE GRAPHICS



The Vista comes with standard graphics. Upgrade to deluxe graphics or full-body paint (NA 26HE).



**Coffee**  
FULL-BODY PAINT



**Bold Beige**  
FULL-BODY PAINT



**Granite Silver**  
FULL-BODY PAINT



**Sandalwood**  
FULL-BODY PAINT

## Weights & Measures

	26HE	27N	30T	35B	35F
Length	26'11"	28'3"	30'11"	36'4"	35'3"
Exterior Height <sup>1</sup>	12'1"	12'2"	12'2"	12'6"	12'5"
Exterior Width <sup>2</sup>	8'5.5"	8'5.5"	8'5.5"	8'5.5"	8'5.5"
Exterior Storage <sup>3</sup> (cu. ft.)	115	112	118	160	154
Awning Length	19'	19'	17'	13'	16'
Interior Height	6'8"	6'8"	6'8"	6'8"	6'8"
Interior Width	8'0.5"	8'0.5"	8'0.5"	8'0.5"	8'0.5"
Freshwater Capacity w/Heater <sup>4</sup> (gal.)	60	81	84	99	80
Holding Tank Capacity - Black/Gray <sup>4</sup> (gal.)	43/38	43/53	41/42	41/46 & 41/51*	41/51 & 21/NA**
LP Capacity <sup>5</sup> (gal.)	18	18	18	18	18
Fuel Capacity (gal.)	80	80	80	80	80
GCWR <sup>6</sup> (lbs.)	23,000	23,000	23,000	26,000	26,000
GVWR (lbs.)	16,000	18,000	18,000	22,000	22,000
GAWR - Front (lbs.)	6,500	7,000	7,000	8,000	8,000
GAWR - Rear (lbs.)	11,000	12,000	12,000	15,000	15,000
Wheelbase	158"	178"	190"	242"	228"

\* The 35B uses separate black and gray tanks for each bathroom

\*\* The 35F uses separate black tanks for each bathroom

## Chassis

### Ford® F53 Chassis

- 362-hp 6.8L Super Duty V10 SEFI Triton® engine
- TorqShift™ 5-speed automatic transmission w/tow/haul
- 175-amp. alternator

### Hydraulic brakes w/ABS

**Trailer Hitch**<sup>6</sup> 5,000-lb. drawbar/500-lb. maximum vertical tongue weight

### 7-pin connector

**Stainless steel wheel liners w/19.5" tires** (26HE, 27N, 30T)

**Stylized aluminum wheels w/22.5" tires** (35B, 35F)

**Automatic hydraulic leveling jacks**



Ford F53 Chassis

## Cab Conveniences

**Cab Seats** adjustable armrests, lumbar support and multi-adjustable slide/recline/swivel

**AM/FM stereo CD player**

**Rearview monitor system w/color camera, one-way audio and color LCD monitor**

**Chassis/house battery radio power switch**

**Power steering w/tilt wheel**

**Exterior power mirrors w/defrost**

**Cab wraparound curtain**

**Cruise control**

**12-volt powerpoints**

**Map light(s)**

**Sunvisors**

**C.B. wire prep** (NA 26HE)

### OPTIONAL EQUIPMENT

**Sideview video camera system** (requires rearview monitor system) (NA 26HE)

**6-way power driver seat** (NA 26HE)

**Passenger seat w/footrest** (NA 26HE)

**Dual-speed defroster fans** (NA 26HE)

**AM/FM stereo w/CD/DVD player, input jacks, remote and alarm clock** (NA 26HE)

**Dash workstation** (NA 26HE)

## Interior

**32" LCD TV** (26HE, 30T, 35F)

**42" LCD TV** (27N, 35B)

**Amplified digital TV antenna system**

**Key-activated slideroom master lock switch**

**Satellite system ready** (NA 26HE)

**MCD American Duo® solar/blackout roller shades**

**Mini blinds** (galley)

**OnePlace® systems center**

**Powered ventilator fan** (lounge)

**Powered ventilator roof vent w/shade** (27N bedroom)

**Powered roof vent** (bath)

**Tinted windows**



**OPTIONAL EQUIPMENT****42" LCD TV w/dining table/buffet** (30T)**32" LCD TV** (27N, 35B)**Tinted, dual-glazed thermo-insulated windows** (NA 26HE)**Vinyl floorcovering** (excludes cab, slideroom floor and bedroom) (30T)**Satellite dish antenna w/remote control extender** (NA 26HE)**Interior Upgrade Package** (NA 26HE) soft vinyl ceiling, galley backplash, Dream Dinette™ dining table, range cover, 2 sink covers, raised-panel refrigerator inserts, throw pillow(s), flip-up countertop extension (30T, 35B, 35F)**Galley****Laminate countertops****2-door refrigerator/freezer****Microwave oven** (26HE, 30T)**Vented range hood** (26HE, 30T)**Microwave oven w/range fan** (27N, 35B, 35F)**3-burner range/oven** (26HE)**3-burner range top w/storage below** (27N, 30T, 35B, 35F)**OPTIONAL EQUIPMENT****3-burner range w/oven** (27N, 30T, 35B, 35F)**Microwave/convection oven** (30T)**Microwave/convection oven w/range fan** (27N, 35B, 35F)**4-door refrigerator/freezer w/icemaker** (35B)**Bath****Laminate countertop****Flexible showerhead****Textured glass shower door****Skylight****Bedroom****Foam mattress** (26HE)**Innerspring mattress** (27N, 30T, 35B, 35F)**Bedsread** (26HE)**Bedsread, pillows and shams** (27N, 30T, 35B, 35F)**Storage area below bed****Bunk beds w/foam mattresses, mattress covers and privacy curtains** (35B)**OPTIONAL EQUIPMENT****2 DVD players w/8.5" LCD monitors and headphones** (35B bunk beds)**22" LCD TV w/cable wall input** (27N, 30T, 35F)**26" LCD TV w/cable wall input** (35B)**Exterior****Premium high-gloss sidewall skin****Automatic entrance door steps****Powered patio awning****Mud flaps****Porch light****Lighted storage compartments** (in select compartments)**Ladder** (NA 26HE)**OPTIONAL EQUIPMENT****Lower front protective mask** (w/full-body paint only)**Entertainment Center** AM/FM stereo, CD player, remote, AC duplex, DC receptacle, removable TV table, speakers and lockable compartment (30T)**Entertainment Center** 32" LCD TV w/remote, AM/FM stereo w/DVD player w/remote, speakers (27N, 35B, 35F)**Heating & Cooling System****14,800 BTU roof-mount air conditioner** (26HE, 27N, 30T)**Two high-efficiency roof-mount air conditioners w/energy management system** (35B, 35F)**30,000 BTU low-profile furnace** (26HE, 27N, 30T)**40,000 BTU low-profile furnace** (35B, 35F)**OPTIONAL EQUIPMENT****A/C heat pump** (27N, 30T)**Two high-efficiency A/C heat pumps** (35B, 35F)**Electrical System****AC/DC load center, 45-amp. converter/charger** (26HE, 27N, 30T)**AC/DC electrical distribution system, 45-amp. converter/charger** (35B, 35F)**30-amp. power cord** (26HE, 27N, 30T)**50-amp. power cord, shoreline/generator automatic changeover switch** (35B, 35F)**PowerLine® Energy Management System** (35B, 35F)**4,000-watt Cummins Onan® MicroQuiet™ gas generator** (26HE, 27N, 30T)**5,500-watt Cummins Onan Marquis Gold™ gas generator** (35B, 35F)**2 deep-cycle Group 24 batteries****Battery disconnect system** (chassis and coach) (coach only 26HE)**Automatic dual battery charge control****Auxiliary start circuit****Exterior TV jack and AC duplex receptacle****OPTIONAL EQUIPMENT****1,000-watt AC/DC inverter w/remote panel** (NA 26HE)**Plumbing System****Service Center** colored labels, cable TV input, pressurized city water hookup w/diverter valve, drainage valves, portable satellite dish hookup, power cord, 10' sewer hose**Exterior wash station w/lighted pump switch** (NA 26HE)**6-gallon LP water heater** (26HE)**6-gallon 110V/LP water heater w/motoraid** (27N, 30T, 35B, 35F)**Heated holding-tank compartment****Permanent-mount LP tank w/gauge****On-demand water pump****TrueLevel™ holding tank monitoring system****Winterization Package** water heater bypass valve and siphon tube**Gravity tank fill w/lockable door** (NA 26HE)**Safety****Seat belts****Child seat tether anchor** (forward facing dinette seat)**LP, smoke and carbon monoxide detectors****10 BC fire extinguisher****Ground fault interrupter****High-mount brake lamp****Warranty<sup>7</sup>****12-month/15,000-mile basic limited warranty<sup>8</sup>****36-month/36,000-mile limited warranty on structure<sup>8</sup>****10-year limited parts and labor warranty on roof skin<sup>8</sup>**

- The height of each model is measured to the top of the tallest standard feature and is based on the curb weight of a typically equipped unit. The actual height of your vehicle may vary by several inches depending on chassis or equipment variations. Please check with your dealer for further information.
  - Vista floorplans feature a wide-body design – over 96" in making your purchase decision, you should be aware that some states restrict access on some or all state roads to 96" in body width. Before making your purchase decision, you should confirm the road usage laws in the states of interest to you.
  - The load capacity of your motor home is designated by weight, not by volume, so you cannot necessarily use all available space when loading your motor home.
  - Capacities are based on measurements prior to tank installation. Slight capacity variations can result due to installation applications.
  - Capacities shown are tank manufacturer's listed water capacity (W.C.). Actual filled LP capacity is 80% of listing due to overfilling prevention device on tank.
  - Actual towing capacity is dependent on your particular loading and towing circumstances which includes the GVWR, GAWR, and GCWR as well as adequate trailer brakes. Please refer to the Operator's Manual of your vehicle for further towing information.
  - See separate chassis warranty.
  - See your dealer for complete warranty information.
- NA Not Available  
Not all items available in combination. See dealer for details.  
Winnebago Industries® continuing program of product improvement makes specifications, equipment, model availability, and prices subject to change without notice. Comparisons to other motor homes are based on the most recent information available at printing.

# GoWinnebago.com Has Gone Mobile

Learn more about the 2013 Vista on your computer, smartphone or tablet. Visit [GoWinnebago.com/Vista](http://GoWinnebago.com/Vista) for the complete Vista experience.



## **PREFERRED CARE PROGRAM**

We back our motor homes with best-in-class support both before *and* after the sale:

- 12-month/15,000-mile basic limited warranty
- 36-month/36,000-mile warranty on structure
- 10-year standard limited parts-and-labor roof skin warranty
- Complimentary 24-hour roadside assistance program



**TRIP Saver**  
FAST TRACK PARTS

- TripSaver® Fast Track Parts guarantees that in-stock warranty parts ship directly to your dealer within 24 hours
- National dealer service network

## Join the Club, Join the Fun

As a Winnebago motor home owner, you are invited to join the WIT Club. It's a great way to take full advantage of your new coach and meet fun-loving WIT Club members from across the country who make motor home adventures a way of life.



### Members enjoy:

- Caravans and rallies
- Newsletters
- Local and state group activities
- RV travel benefits

See more on  
**WITclub.com**

### Grand National Rally

Each year, thousands of Winnebago Industries motor home owners descend upon Forest City, Iowa, for the Grand National Rally. Rally goers connect with old friends and enjoy concerts, tours, activities and more in a weeklong celebration of the motor home lifestyle. Join us this July for a week you'll never forget.

