

2013 Travel Star®

TRAVEL TRAILERS AND FIFTH WHEELS BY STARCRAFT®

Travel Star



STARCRAFT



- ✓ 7' INTERIOR CEILING HEIGHT (TT)
- ✓ ARCTIC PACKAGE (TT, FW)
- ✓ COLORED FRONT CAP (OPTIONAL GALAXY PACKAGE)
- ✓ DARK-TINTED WINDOWS
- ✓ 10-GAL. WATER HEATER (FW)
- ✓ OUTSIDE SHOWER

158

9

SANA-TORIUM

2013

TRAVEL STAR



- ✓ VACUUM-BONDED SIDEWALLS
- ✓ PORCELAIN TOILET
- ✓ OUTSIDE SHOWER
- ✓ CROWNED TRUSS ROOF SYSTEM
- ✓ HARDWOOD CABINETRY STILES





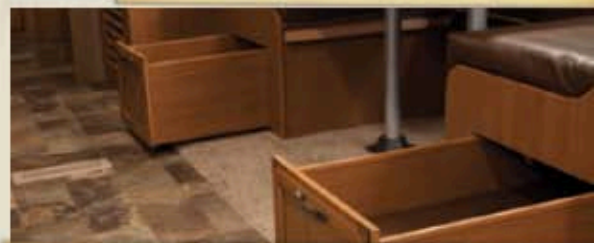
Travel Star TT 294RESA | Sable



Travel Star FW 286RLS | Marble



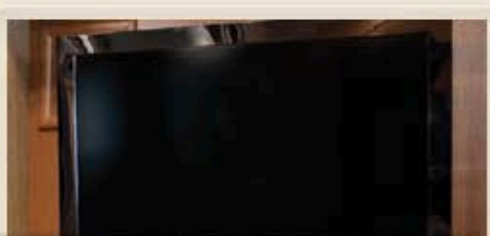
FREE-STANDING TABLE
Expand your table space with the free standing table's extension leaf.



DINETTE STORAGE
No need to leave your games and entertainment at home. Travel Star features 38" dinette drawers for plenty of storage (TT, FW).



Travel Star TT 309BHS | Marble



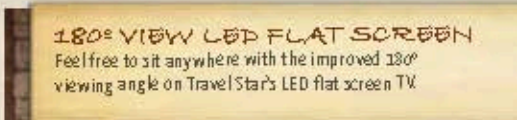
22" LED BEDROOM TV
The optional 22" bedroom TV features an inside/outside bracket that allows you to move the entertainment outdoors to the exterior TV prep.



INTEGRATED SPICE RACK
A spice rack, integrated into the kitchen valance, creates space saving convenience.



PULL-OUT LAUNDRY BASKET
Innovative storage solutions, like a pull out laundry basket, save space while providing more storage (TT).



180° VIEW LED FLAT SCREEN
Feel free to sit anywhere with the improved 180° viewing angle on Travel Star's LED flat screen TV.



HIDE-A-BED
The optional hide a bed provides space saving convenience and added overnight comfort with an upgraded foam mattress for family, friends and guests.

Travel Star

EXPANDABLE



- ✓ 6-GAL. GAS DSI WATER HEATER
- ✓ VACUUM-BONDED SIDEWALLS
- ✓ 6 CU. FT. DOUBLE-DOOR REFRIGERATOR
- ✓ 1,100-LB. RATED BUNKS
- ✓ OUTSIDE SHOWER



Travel Star EXP 229TB | Jewel



Travel Star EXP 229TB | Jewel



Travel Star EXP 229TB | Jewel

STANDARDS AND OPTIONS

STANDARD CONSTRUCTION EQUIPMENT

78" ceiling height
Cable support bunk end system (1,100-lb. capacity)
Corrosion-resistant frame
Crowned truss roof
Insulation (R-7 in roof, floor and walls)
One-piece seamless rubber roof material
Screwed stile cabinetry with hardwood stiles
TuffShell vacuum-bonded sidewalls
Welded tubular-aluminum sidewalls

STANDARD EXTERIOR EQUIPMENT

2-5/16" hitch coupler
6-gal. gas DSI water heater
12V demand water pump
20-lb. propane bottles with auto changeover (2)
120V G.F.C.I. protected exterior receptacle
Aerodynamic front profile
Amber patio light with inside switch
AquaShield Aqualon water-repellent sectionalized tent with 7-year warranty
Bumper with drain hose carrier and end caps
Bunk-end tents permanently attached to bed base
Crank-up HDTV antenna with signal booster
E-Z Lube axles
Fresh water fill and hookup connection
Front diamond plate
Large grab handle at entry door
Lighted entry step
Molded rain gutting with extended drip spouts
Outside grill prep
Painted bottom radius skirting
Patio awning
Radial tires
Self-supporting lockable bunk ends (no poles required)

STANDARD INTERIOR EQUIPMENT

18,000-BTU furnace with auto-ignition
Ball bearing drawer guides, 50-lb. capacity with full-drawer extension
Bathroom exhaust fan
Bourbon Glaze beech wood doors and drawers throughout
Cable and satellite TV prepped
High-density foam cushions
LED light in bunk area
Pleated shades
Porcelain toilet with foot flush
Privacy curtains for bunks
Queen bed-sized quilted bunk mats (2)
Stereo with MP3 input jack and 2 speakers
Systems monitor panel
Tub/shower skylight
Vanity mirror in bathroom
Water heater bypass system
Winterization kit

STANDARD KITCHEN EQUIPMENT

3-burner range
6 cu. ft. flush-mount refrigerator
High-rise mixing faucet with pull-out sprayer (select models)
Large kitchen window (select models)
Oversized kitchen sink with integrated drying racks (select models)
Range hood with light and exhaust fan

CUSTOMER CONVENIENCE PACKAGE

13,500-BTU A/C with wall thermostat
ABS gas bottle cover with access hatch to propane valves
ABS tub surround
Microwave oven with carousel
Outside marine-grade speakers (2)
Spare tire with carrier and cover

OPTIONS

Customer Convenience Package
Coleman outdoor grill and table
Oven
Polished aluminum wheels
Premier Package: 22" LED TV, CD/DVD player with MP3 input jack, electric patio awning



7-YEAR TENT WARRANTY
Avoid stretching, shrinking or cracking with our mold-resistant, double-stitched AquaShield Aqualon tents.



COLEMAN OUTDOOR GRILL AND TABLE
Prepare your favorite hot meals with the convenience and ease of the optional outdoor grill and table (optional).



WIDE-STANCE AXLES

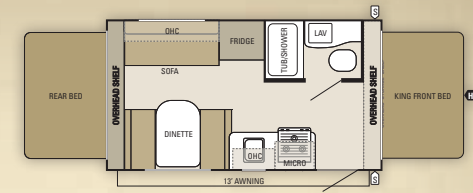
Enjoy a safer and easier towing experience with our spread-axle design that efficiently distributes and reduces tongue weight.

SPECIFICATIONS

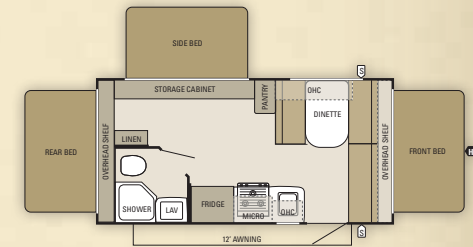
Floorplan	Exterior Length	Exterior Height with A/C	Interior Height	Unloaded Vehicle Weight (lbs.)	Dry Hitch Weight (lbs.)	Cargo Carrying Capacity (lbs.)	Fresh Water Capacity (gal.) (includes water heater)	Gray Waste Water Capacity (gal.)	Black Waste Water Capacity (gal.)
186RD	TBD	TBD	78"	TBD	TBD	TBD	28.5	30.8	30.8
187TB	17' 2"	122"	78"	3,555	365	920	28.5	30.8	30.8
207RB	18' 7"	122"	78"	3,670	370	1,280	28.5	30.8	30.8
227CKS	TBD	TBD	78"	TBD	TBD	TBD	28.5	30.8	30.8
229TB	21' 9"	121"	78"	4,355	410	1,295	28.5	30.8	30.8

UNLOADED VEHICLE WEIGHT (UVW): Sometimes referred to as "Dry Weight," UVW means the typical weight of this trailer as built at the factory. The UVW, as used in product literature and other promotional materials, does not include cargo, fresh water, propane, options or dealer-installed accessories. The weights of certain options and/or option packages are not included in the UVW listed above. **GROSS VEHICLE WEIGHT RATING (GVWR):** GVWR means the maximum permissible weight of the trailer, including the UVW plus passengers, personal items, all cargo, fluids, options, and dealer-installed accessories. The GVWR is equal to or greater than the sum of the UVW and the CCC. **CARGO CARRYING CAPACITY (CCC):** CCC means the maximum weight of all passengers, personal items, food, fresh water, propane, tools, other cargo and dealer-installed accessories that can be carried by the trailer. CCC is equal to or less than GVWR minus UVW. The addition of options will decrease the CCC. **HITCH WEIGHT (HW):** The hitch weight, as used in product literature and other promotional materials, does not include cargo, fresh water, propane gas, options or dealer-installed accessories. The addition of these types of items will either add to or subtract from the stated hitch weight. It is important for your safety and enjoyment that your tow vehicle be adequately sized and equipped to tow and handle the GVWR of the RV you select. Review weights and rating of your tow vehicle and consult a competent advisor for questions or advice. Whether you are new to RVing or a veteran, get a feel for the performance of your tow vehicle and the RV together before heading out on the roadways. When you tow an RV, you must drive differently than you do when driving a single vehicle. Practice hooking up, driving, backing up and braking in a safe environment or seek out professional instruction. Starcraft affixes a weight label to each RV which lists weight information for that vehicle. See specification chart above.

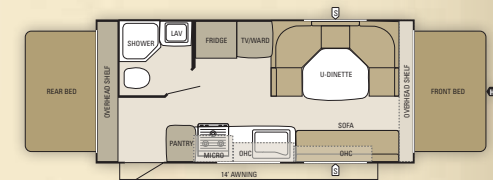
FLOORPLANS



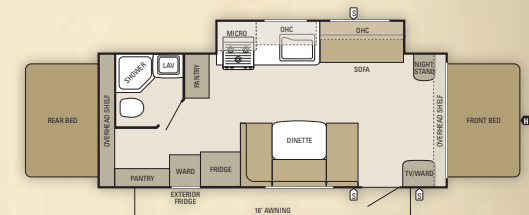
Travel Star EXP 186RD



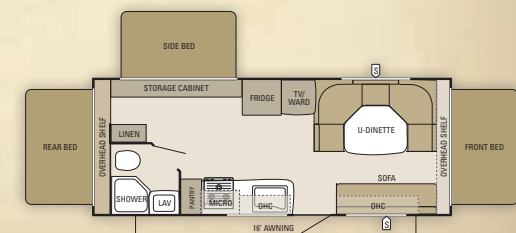
Travel Star EXP 187TB



Travel Star EXP 207RB



Travel Star EXP 227CKS



Travel Star EXP 229TB

S OUTSIDE STORAGE **LAV** BATHROOM SINK **OHC** OVERHEAD CABINETS
H TRAILER HITCH **MICRO** MICROWAVE **FRIDGE** REFRIGERATOR
WARD WARDROBE

Travel Star

TRAVEL TRAILER



- ✓ 30" x 72" ENTRY DOOR
- ✓ BLACK TANK FLUSH
- ✓ 7' INTERIOR HEIGHT
- ✓ OUTSIDE TV PREP UNDER AWNING
- ✓ HARDWOOD CABINETRY STILES



Travel Star TT 309BHS | Marble



Travel Star TT 294RESA | Sable



Travel Star TT 294RESA | Sable

STANDARDS AND OPTIONS

STANDARD CONSTRUCTION EQUIPMENT

3/8" decking on roof
5/8" tongue-and-groove plywood floor
4-1/2" arched truss roof rafters (R-22 insulation)
6" interior slideout height
7" interior ceiling height
Arctic Package: Insulated, heated and enclosed underbelly; foil insulation in roof and slideout floors
Hardwood cabinetry stiles with screwed construction
I-Class cambered structural-steel I-beam frame
In-floor ducted heat
One-piece seamless rubber roof material
TuffShell vacuum-bonded laminated sidewalls
R-7 Insulation in floor and sidewalls

STANDARD EXTERIOR EQUIPMENT

6-gal. gas/electric DSI water heater
30" x 72" radius-cornered main entry door with screen door
120V G.F.C.I. protected exterior receptacle
Bumper with drain hose carrier and end caps
Cable and satellite TV prep
Crank-up HDTV antenna with signal booster
E-Z Lube axles
Front diamond plate
Large grab handle at entry door
Nev-R-Adjust electric brakes
Outside kitchen with Coleman grill, refrigerator and sink (285FB and 309BHS)
Outside TV prep
Patio awning
Propane bottle cover made of molded ABS
Radial tires
Stabilizer jacks (4)
Starmaxx pass-through storage with tool hooks and courtesy light
Step light at entry door
Tinted safety-glass windows
Water system winterization kit

STANDARD INTERIOR EQUIPMENT

A/C Chillgrille
Auto-ignition furnace with wall thermostat
Ball bearing drawer guides, 50-lb. capacity with full-drawer extension
Bourbon Glaze beech wood doors and drawers throughout
Command center with centrally located switches
Decorative lighting package
Evergreen mattress with radius corners
Marine-grade table leg and pedestal base
Multi-Media Sound System
AM/FM/CD stereo with MP3 input jack
Overhead cabinetry in slideout above sofa
Pleated shades

Porcelain toilet with foot flush
Quilted bunk mats
Radius shower (select models)
Roof-mounted antenna for radio
Storable laundry basket under bed
Xtend-a-bed insert (60" x 80" queen bed)

STANDARD KITCHEN EQUIPMENT

6 cu. ft. flush-mount refrigerator with black panel inserts
Deep storage drawers under booth dinette seat (2)
Double drawer with integrated silverware dividers
Extra large picture window at dinette
Integrated trash can storage (select models)
Kitchen backsplash
Range hood with light and exhaust fan
Residential faucet with pull-out sprayer
Sink covers with integrated drying rack
Spice rack storage integrated into valance
Storable cutting board

CUSTOMER CONVENIENCE PACKAGE

3-burner range with 9,000-BTU SuperBurner and piezo igniter
13,500 or 15,000-BTU A/C
Black tank flush
Microwave
Outside shower
Outside speakers (2)
Oversized 21" oven
Roof ladder
Security lights (2)
Spare tire with carrier
Tub surround and water heater bypass system

OPTIONS

22" LED TV in bedroom with inside/outside bracket
32" LED TV and CD/DVD player with MP3/iPod input jack
50-amp service with 2nd A/C prep
Aluminum rims
Electric awning
Free-standing table with extendable leaf and 4 chairs
Hide-a-bed sofa
Ledge-stone fireplace (294RESA)
Mini Power Package: electric awning and electric tongue jack
Outside Coleman grill with table
Power Package: Electric awning, electric tongue jack, front and rear power stabilizer jacks

GALAXY PACKAGE OPTION

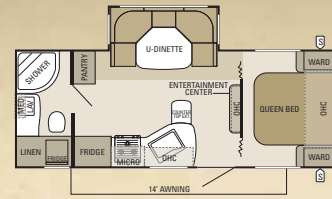
6-panel residential trim bathroom door
30-lb. propane bottles with cover (2)
32" LED 1080P HDTV with CD/DVD player and MP3/iPod input jack
Aluminum rims
Carpet in bedroom
Fiberglass front cap
Headboard with integrated shelf in bedroom
Hardwood refrigerator door inserts
Large folding grab handle at main entry door
Northern Breeze power fan in bathroom
Power Package: Electric awning, front and rear power stabilizer jacks, electric tongue jack
Remote control for patio awning, sliderooms, porch light, security light and front and rear stabilizer jacks
Raised-panel cabinetry throughout
Slam latch on pass-thru storage doors
Sliding doors in front bedroom
Solid-surface kitchen countertops with undermount sink
Upgraded graphics package
Wallpaper border in living room



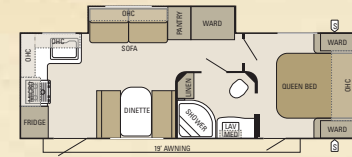
SCAN
for a complete list of standards and options,
OR VISIT
starcamp.com



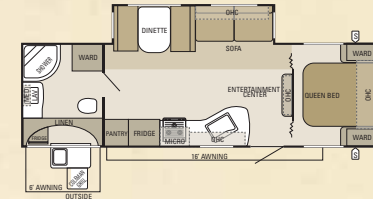
FLOORPLANS



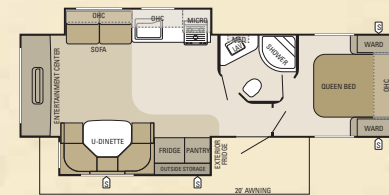
Travel Star TT 244DS



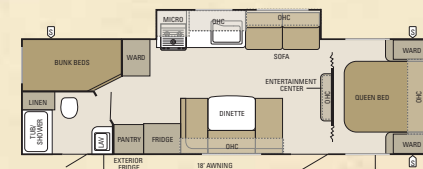
Travel Star TT 274RKS **OPTION: B**



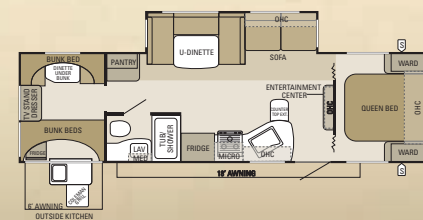
Travel Star TT 285FB **OPTION: A, B**



Travel Star TT 294RESA **OPTION: B, C**



Travel Star TT 299BHU



Travel Star TT 309BHS **OPTION: B**



OVERSIZED KITCHEN SINK

Easily wash dishes thanks to an oversized kitchen sink with pull-out sprayer.



OUTDOOR KITCHEN

Be part of the action with our handy outdoor kitchen (select models), featuring a sink, Coleman grill, refrigerator, awning and storage.

- S** OUTSIDE STORAGE
- H** TRAILER HITCH
- LAV** BATHROOM SINK
- MICRO** MICROWAVE
- OHC** OVERHEAD CABINETS
- FRIDGE** REFRIGERATOR
- WARD** WARDROBE

OPTION A



FREE-STANDING TABLE WITH EXTENDABLE LEAF OPTION

OPTION B



HIDE-A-BED OPTION

OPTION C



LEDGESTONE FIREPLACE OPTION

SPECIFICATIONS

Floorplan	Exterior Length	Exterior Height with A/C	Interior Height	Unloaded Vehicle Weight (lbs.)	Dry Hitch Weight (lbs.)	Cargo Carrying Capacity (lbs.)	Fresh Water Capacity (gal.) (includes water heater)	Gray Waste Water Capacity (gal.)	Black Waste Water Capacity (gal.)
244DS	TBD	TBD	84"	TBD	TBD	TBD	68.6	32	32
274RKS	30' 1"	138"	84"	5,475	655	2,025	68.6	61.6	30.8
285FB	32' 1"	138"	84"	6,410	855	1,840	68.6	64	32
294RESA	33'	138"	84"	6,800	880	1,750	68.6	30.8	30.8
299BHU	32' 7"	137"	84"	5,965	675	1,985	68.6	32	32
309BHS	29' 10"	138"	84"	6,675	670	1,925	68.6	30.8	30.8

UNLOADED VEHICLE WEIGHT (UVW): Sometimes referred to as "Dry Weight," UVW means the typical weight of this trailer as built at the factory. The UVW, as used in product literature and other promotional materials, does not include cargo, fresh water, propane, options or dealer-installed accessories. The weights of certain options and/or option packages are not included in the UVW listed above. **GROSS VEHICLE WEIGHT RATING (GVWR):** GVWR means the maximum permissible weight of the trailer, including the UVW plus passengers, personal items, all cargo, fluids, options, and dealer-installed accessories. The GVWR is equal to or greater than the sum of the UVW and the CCC. **CARGO CARRYING CAPACITY (CCC):** CCC means the maximum weight of all passengers, personal items, food, fresh water, propane, tools, other cargo and dealer-installed accessories that can be carried by the trailer. CCC is equal to or less than GVWR minus UVW. The addition of options will decrease the CCC. **HITCH WEIGHT (HW):** The hitch

weight, as used in product literature and other promotional materials, does not include cargo, fresh water, propane gas, options or dealer-installed accessories. The addition of these types of items will either add to or subtract from the stated hitch weight. It is important for your safety and enjoyment that your tow vehicle be adequately sized and equipped to tow and handle the GVWR of the RV you select. Review weights and rating of your tow vehicle and consult a competent advisor for questions or advice. Whether you are new to RVing or a veteran, get a feel for the performance of your tow vehicle and the RV together before heading out on the roadways. When you tow an RV you must drive differently than you do when driving a single vehicle. Practice hooking up, driving, backing up and braking in a safe environment or seek out professional instruction. Starcraft affixes a weight label to each RV which lists weight information for that vehicle. See specification chart above.

SECURITY LIGHT AT ENTRY STEP
The standard security light increases visibility at night, providing greater peace of mind.

Travel Star

FIFTH WHEEL



- ✓ 60" x 80" QUEEN MATTRESS
- ✓ 75 CU. FT. STARMAXX STORAGE (DROP FRAME CHASSIS)
- ✓ CEILING FAN
- ✓ OUTSIDE SPEAKERS
- ✓ ARCTIC PACKAGE



Travel Star FW 286RLS | Marble



Travel Star FW 286RLS | Marble



Travel Star FW 286RLS | Marble



Travel Star FW 275RKS | Jewel

STANDARDS AND OPTIONS

STANDARD CONSTRUCTION EQUIPMENT

3/8" decking on roof
5/8" tongue and groove plywood floor
4-1/2" arched truss roof rafters (R-22 insulation)
6' interior slideout height
Arctic Package: Insulated, heated and enclosed underbelly, foil insulation in roof and slideroom floors
Hardwood stile with screwed construction
I-Class cambered structural-steel I-beam frame
In-floor ducted heat
One-piece seamless rubber roof material
R-7 insulation in floor and sidewalls
TuffShell vacuum-bonded laminated sidewalls

STANDARD EXTERIOR EQUIPMENT

10-gal. gas/electric DSI water heater
30" x 72" radius-cornered main entry door with screen door
120V G.F.C.I. protected exterior receptacle
Bumper with drain hose carrier and end caps
Cable and satellite TV prep
Crank-up HDTV antenna with signal booster
Dual 30-lb. propane bottles
E-Z Lube axles
Large grab handle at entry door
Nev-R-Adjust electric brakes
Outside kitchen with Coleman grill, refrigerator and sink (278BHS)
Outside TV prep
Patio awning
Radial tires
Rear stabilizer jacks
Roof-mounted antenna for radio
Starmaxx drop frame basement storage area with light and tool hooks
Step light at entry door
Tinted safety-glass windows
Utility center
Water system winterization kit

STANDARD INTERIOR EQUIPMENT

60" x 80" Evergreen mattress with radius corners
A/C Chillgrille
Auto-ignition furnace with wall thermostat
Ball bearing drawer guides, 50-lb. capacity with full-drawer extension
Bourbon Glaze beech wood doors and drawers throughout
Ceiling fan
Command center with centrally located switches
Decorative lighting package
In-floor ducted heat
Marine-grade table leg and pedestal base
Multi-Media Sound System AM/FM/CD stereo with MP3 input jack
Overhead cabinetry in slideout room above sofa
Pleated shades
Porcelain toilet with foot flush
Quilted bunk mats
Radius shower

STANDARD KITCHEN EQUIPMENT

6 cu. ft. flush-mount refrigerator with black panel inserts
Deep storage drawers under booth dinette seat (2)
Double drawer with integrated silverware dividers
Extra-large picture window at dinette
Integrated trash can storage (select models)
Kitchen backsplash
Range hood with light and exhaust fan
Residential faucet with pull-out sprayer
Sink covers with integrated drying rack
Spice rack storage integrated into valance
Storable cutting board

CUSTOMER CONVENIENCE PACKAGE

3-burner range with 9,000-BTU SuperBurner and piezo igniter
13,500 or 15,000-BTU A/C
Black tank flush
Microwave
Outside shower
Outside speakers (2)
Oversized 21" oven
Roof ladder
Security lights (2)
Spare tire with carrier
Tub surround and water heater bypass system

OPTIONS

32" LED TV and CD/DVD player with MP3/iPod input jack
50-amp service with 2nd A/C prep
Aluminum rims
Electric awning
Fireplace
Free-standing table with extendable leaf and 4 chairs
Hide-a-bed (standard on 286RLS)
Outside Coleman grill with table
Rear electric stabilizer jacks

GALAXY PACKAGE OPTION

6-panel residential trim bathroom door
32" LED 1080P HDTV with CD/DVD player and MP3/iPod input jack
Aluminum rims
Electric awning
Electric rear stabilizer jacks
Fiberglass front cap
Hardwood refrigerator door inserts
Headboard with integrated shelf in bedroom
Large folding grab handle at main entry door
Northern Breeze power fan in bathroom
Raised-panel cabinetry throughout
Pin box cover
Remote control for patio awning, slide rooms, porch light, security light and front and rear jacks
Slam latch on front pass-thru storage doors
Solid-surface kitchen countertops with undermount sink
Upgraded graphics package
Wallpaper border in living room



WIDE-STANCE DESIGN

With wide-stance front landing legs, Travel Star offers easy setup and increased stability.



10-GAL WATER HEATER

There's plenty of hot water to go around thanks to a 10-gal. DSI water heater and quick recover system.



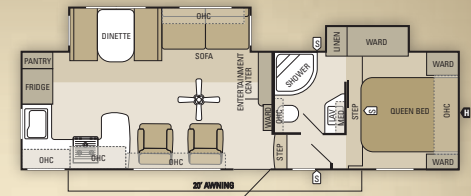
SCAN

for a complete list of standards and options,

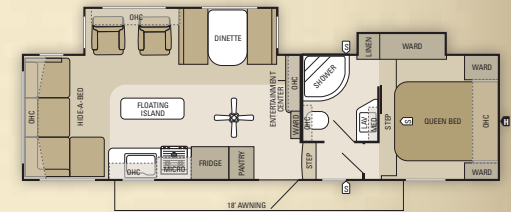
OR VISIT

starcraftcamping.com

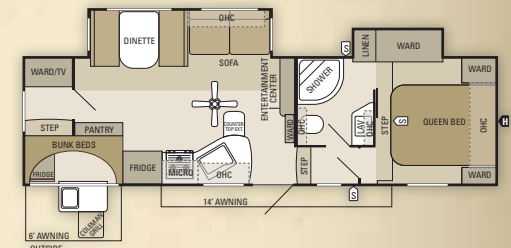
FLOORPLANS



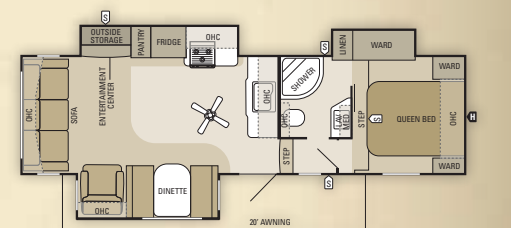
Travel Star FW 275RKS **OPTION: A, B**



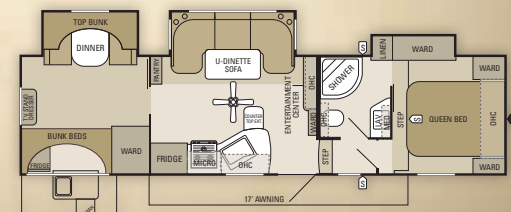
Travel Star FW 276RL **OPTION: A**



Travel Star FW 278BHS **OPTION: A, B**



Travel Star FW 286RLS **OPTION: A**



Travel Star FW 308BHU

OPTION A



FREE-STANDING TABLE WITH EXTENDABLE LEAF OPTION

OPTION B



HIDE-A-BED OPTION

- STORAGE
- TRAILER HITCH
- BATHROOM SINK
- MICROWAVE
- OVERHEAD CABINETS
- REFRIGERATOR
- WARDROBE

SPECIFICATIONS

Floorplan	Exterior Length	Exterior Height with A/C	Interior Height (Bedroom)	Unloaded Vehicle Weight (lbs.)	Dry Hitch Weight (lbs.)	Cargo Carrying Capacity (lbs.)	Fresh Water Capacity (gal) (includes water heater)	Gray Waste Water Capacity (gal.)	Black Waste Water Capacity (gal.)
275RKS	32' 5"	140"	77"	7,435	1,450	2,535	72.6	61.6	30.8
276RL	TBD	TBD	TBD	TBD	TBD	TBD	TBD	TBD	TBD
278BHS	32' 6"	144"	77"	7,520	1,290	2,460	72.6	61.6	30.8
286RLS	32' 6"	146"	77"	7,915	1,550	2,585	72.6	28.8	28.8
308BHU	TBD	TBD	TBD	TBD	TBD	TBD	TBD	TBD	TBD

UNLOADED VEHICLE WEIGHT (UVW): Sometimes referred to as "Dry Weight," UVW means the typical weight of this trailer as built at the factory. The UVW, as used in product literature and other promotional materials, does not include cargo, fresh water, propane, options or dealer-installed accessories. The weights of certain options and/or option packages are not included in the UVW listed above. **GROSS VEHICLE WEIGHT RATING (GVWR):** GVWR means the maximum permissible weight of the trailer, including the UVW plus passengers, personal items, all cargo, fluids, options, and dealer-installed accessories. The GVWR is equal to or greater than the sum of the UVW and the CCC. **CARGO CARRYING CAPACITY (CCC):** CCC means the maximum weight of all passengers, personal items, food, fresh water, propane, tools, other cargo and dealer-installed accessories that can be carried by the trailer. CCC is equal to or less than GVWR minus UVW. The addition of options will decrease the CCC. **HITCH**

WEIGHT (HW): The hitch weight, as used in product literature and other promotional materials, does not include cargo, fresh water, propane gas, options or dealer-installed accessories. The addition of these types of items will either add to or subtract from the stated hitch weight. It is important for your safety and enjoyment that your tow vehicle be adequately sized and equipped to tow and handle the GVWR of the RV you select. Review weights and ratings of your tow vehicle and consult a competent advisor for questions or advice. Whether you are new to RVing or a veteran, get a feel for the performance of your tow vehicle and the RV together before heading out on the roadways. When you tow an RV, you must drive differently than you do when driving a single vehicle. Practice hooking up, driving, backing up and braking in a safe environment or seek out professional instruction. Starcraft affixes a weight label to each RV which lists weight information for that vehicle. See specification chart above.

STARCRAFT

THE GALAXY PACKAGE



The upgrades you want
at a price you can afford.

- ✓ 6-panel residential trim bathroom door
- ✓ 32" LED 1080P HDTV with CD/DVD player and MP3/iPod input jack
- ✓ Aluminum rims
- ✓ Northern Breeze bathroom power fan
- ✓ Electric awning with remote control
- ✓ Hardwood refrigerator door inserts
- ✓ Slam latch on front pass-thru storage doors
- ✓ Raised-panel cabinetry throughout
- ✓ Headboard with integrated shelf in bedroom
- ✓ Front and rear electric jacks with remote control

See travel trailer and fifth wheel Standards and Options for a full Galaxy Package feature list.



FIBERGLASS FRONT CAP

Stand out in a crowd with the Galaxy Package's upgraded graphics, silver-colored front fiberglass cap and striking slideout end walls.



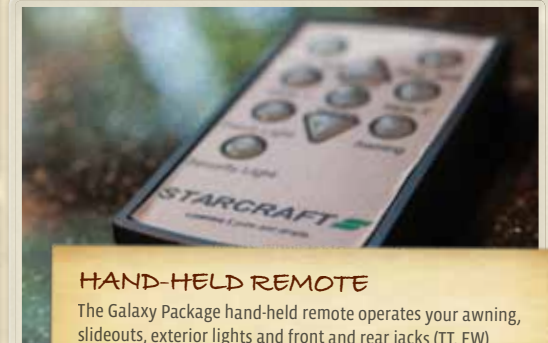
ELECTRIC STABILIZER JACKS

Starcraft's electric stabilizer jacks make leveling your camper a breeze.



SLAM LATCH BAGGAGE DOORS

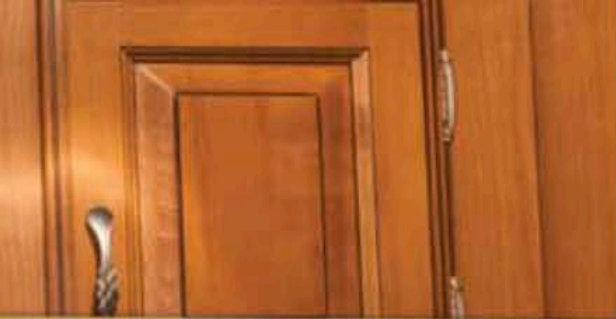
Travel Star Galaxy's bus-style slam latch baggage doors allow for one-handed access to storage, eliminating the need to hold the door or latch it to the sidewall.



HAND-HELD REMOTE

The Galaxy Package hand-held remote operates your awning, slideouts, exterior lights and front and rear jacks (TT, FW).





RAISED-PANEL CABINETRY THROUGHOUT

Raised panel cabinetry showcases Starcraft's Amish craftsmanship and adds additional charm to your experience.



ALUMINUM RIMS

With safety in mind, Travel Star Galaxy highlights radial tires and aluminum rims with a wide stance design.



UPGRADED KITCHEN

Enjoy more high end features with the Galaxy Package solid surface countertops, detailed backsplash and undermounted sink.



UPGRADED BEDROOM

Experience all the amenities of home with an upgraded bedroom featuring a lightweight Evergreen mattress, two toned wall board, and the Galaxy Package headboard with integrated shelf.

DÉCOR



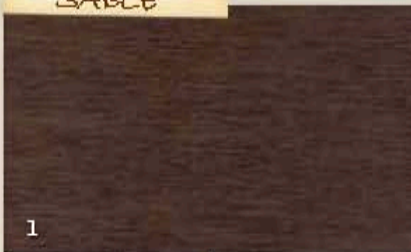
SABLE



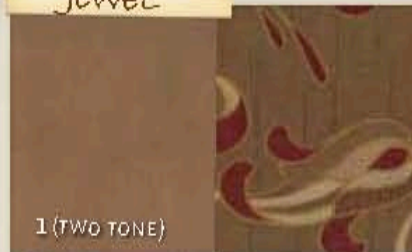
JEWEL



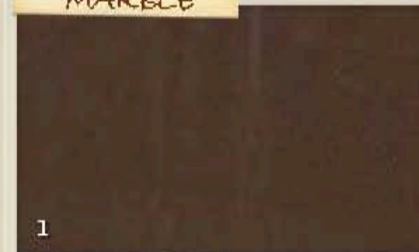
MARBLE



1



1 (TWO TONE)



1



2



3



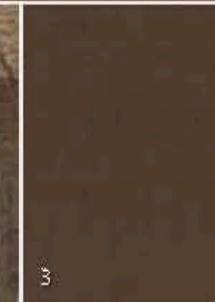
2



3



2



3



4



5



4



5



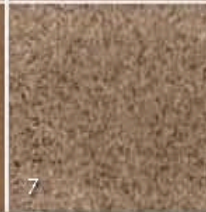
4



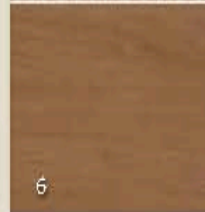
5



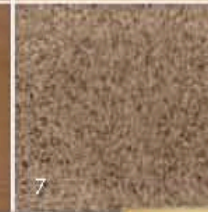
6



7



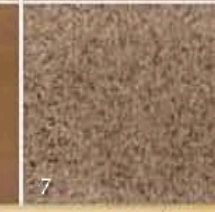
6



7



6



7



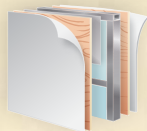
SIMPLY THE BEST CONSTRUCTION

At Starcraft, we've built a strong reputation for making reliable, durable campers for almost 50 years. We use only the highest-quality materials and state-of-the-art production techniques. **It's this devotion to durability that has helped our company become a recognized manufacturer with a full lineup of affordable towables.** In short, the last thing you have to worry about when you're camping is your camper.



eco advantage™

The Starcraft EcoAdvantage is our company's commitment to protecting the environment. Scan this QR code with your smartphone to watch a video about our efforts and the impact we're making on our planet.



LAMINATED WALLS

Using TuffShell vacuum-bonded lamination, our walls combine welded aluminum framing, fiberglass sidewalls and metal backers, ensuring your camper can handle the toughest conditions.



STRONGER DRAWERS

Residential-style ball bearing drawer guides give our drawers full extension, smooth operation and more strength.



EXTENDED CAMPING

Our standard Arctic Package extends your camping season, providing protection against frigid temperatures with its insulated, heated and enclosed underbelly (TT, FW).



CAMPING | pure and simple. STARCRAFT



www.starcraftcamping.com

VISIT OUR WEBSITE FOR MORE INFORMATION OR TO FIND A DEALER NEAR YOU.



Warranty

Each Starcraft is warranted to the original purchaser for twelve (12) months from the original date of purchase against defects in materials and workmanship. For a copy of the limited warranty with full terms and conditions, ask your local Starcraft dealer.



Roadside Assistance

Travel worry-free with the complimentary Good Sam Roadside Assistance program, which gives you immediate access to dependable roadside assistance with a simple phone call.



The Value of Your Local Starcraft Dealer

Establishing a solid relationship with your local Starcraft dealer is a key component in the enjoyment of your new Starcraft. By purchasing from a local dealer, you will have a convenient location for sales, parts and service support.

FOLLOW US ON



© Starcraft RV • 536 Michigan St., Topeka, IN 46571
www.starcraftcamping.com

See dealer for further information and prices. All information in this brochure is the latest available at the time of publication approval. Starcraft reserves the right to make changes and to discontinue models without notice or obligation. Photos in this brochure may show optional equipment and props for photography purposes. RV's built for sale in Canada may differ to conform to Canadian codes.