

# Brookstone Full-Size Luxury Fifth Wheels

**Coachmen**

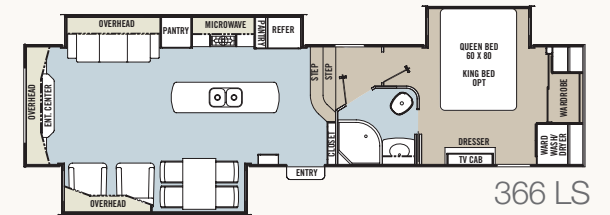
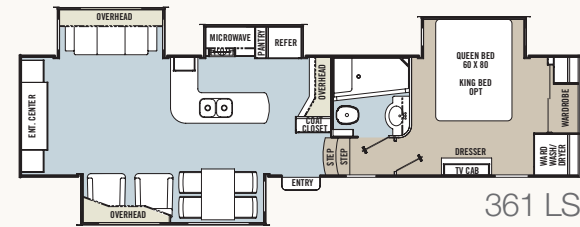
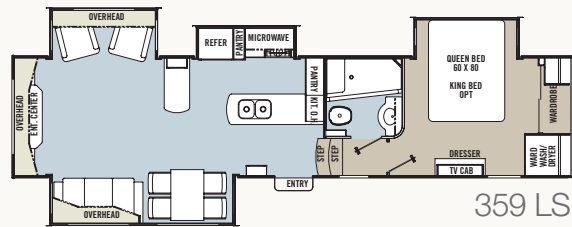
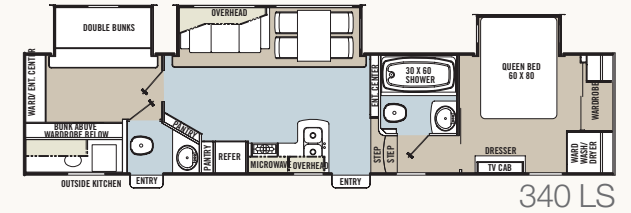
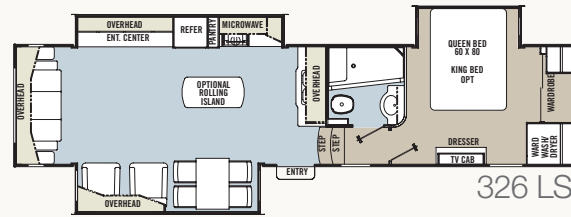
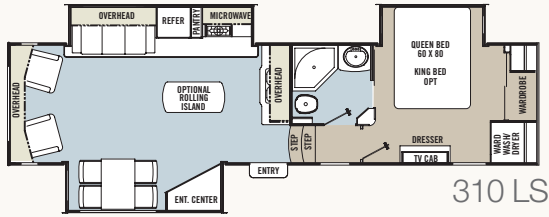
Leader to the Great Outdoors.



BROOKSTONE

# REDEFINED. REDESIGNED.

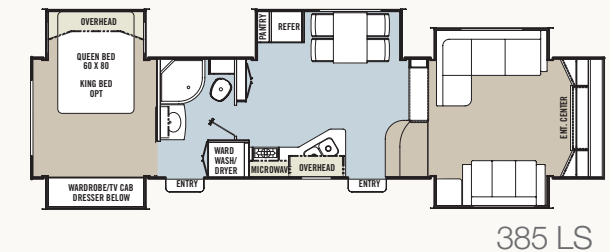
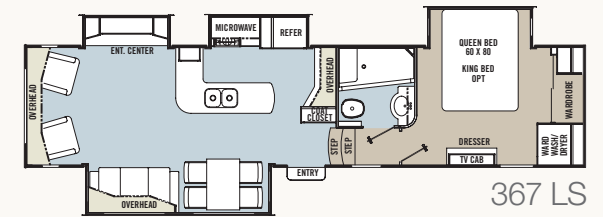
Brookstone has always been a premium luxury product to take on your RV travels. And instead of resting on our successes, we chose to make significant enhancements to provide you the best full-size luxury fifth wheel.



## BROOKSTONE SPECIFICATIONS

	310 LS	326 LS	340 LS	359 LS	361 LS	366 LS	367 LS	385 LS
Length *	35' 6"	37' 5"	39' 5"	37' 6"	37' 6"	37' 6"	37' 6"	38' 3"
UVW	10,910	11,760	11,970	11,930	13,070	12,910	12,650	12,069
Hitch Weight	2,270	2,580	2,600	2,290	2,920	2,590	2,870	1,930
GVWR	14,000	15,300	15,300	15,300	15,300	15,300	15,300	15,300
Fresh Water	70	70	70	70	70	70	70	70
Gray Water	90	90	90	90	90	90	90	90
Black Water	45	45	90	45	45	45	45	45

\* Lengths are determined from the bumper to the center of the hitch pin



## BROOKSTONE "COACHMEN CONVENIENCE PACKAGE"

- Color Infused High Gloss Fiberglass
- Frameless Dark Tinted Windows
- Hydraulic Slide Outs
- Equa Flex Rubber Suspension
- Turn Tec Engineered Front Cap
- Corian Counter Tops with Water Fall Edge
- Halogen Lights Throughout
- Pennant Lights with Wood Light Box
- Hidden Cabinet Door Hinges
- Hardwood Slide Out Fascia
- Stainless Steel 30" Residential Microwave
- Stainless Steel Range with Sealed Burner

- 22" Stainless Steel Oven
- 40" Living Room TV
- 50" Living Room TV (385 only)
- Cedar Lined Front Wardrobe with Hamper
- Built in Trash Can (NA 359)
- High Rise Steel Galley Faucet with Pull Out Sprayer
- Washer Dryer Ready
- Rear Fiberglass Cap (361, 366, 367, 385)
- Drop Frame Storage with 165 cu. ft. of Storage (361, 366, 367, 385)
- Independent Jacks with Dual Motors
- Freestanding Dinette with 2 Residential Size Dinette Chairs & 2 Folding Chairs

## POPULAR OPTIONS

- Booth Dinette
- Electric Fireplace
- Central VAC
- King Bed (NA 340)
- 32" Bedroom TV
- Leather Recliners
- Leather Sofa
- Jack Knife Sofa IPO Bottom Bunk
- Rolling Gallery Island (310, 326)
- Super Dinette Sofa (340)
- 12 cu. ft. Refrigerator with Wood Inserts
- 12 cu. ft. SS Refrigerator with Ice Maker
- Stackable Washer and Dryer
- Trail Air Hitch
- Dual Pane Tinted Frameless Windows
- Hitch Cover (NA with Trail Air Hitch)
- Second Electric Awning (340 Only)
- Slide Awning Package (Triple Slides)
- Slide Awning Package (Quad Slides)
- Slide Awning Package (Quint Slides)
- Full Body Paint (Diamond Edition Paint)
- Level Up Six Point Auto-Level system
- Second 13.5k BTU A/C in Bedroom
- Low Profile, Ducted Dual Zone Second 13.5k A/C
- Power Vent Fan in Bedroom
- Power Vent Fan in Bunkroom
- Power Vent Fan in Bathroom
- Power Vent Fan in Kitchen
- Generator Ready (Onan 5.5 KW Specifications)
- Artic Eskimo Package
- 12v Holding Tank Heat Pads



# FREE ROADSIDE ASSISTANCE



Coachmen provides one year of free Travel Easy™ emergency roadside assistance for those who buy a new Coachmen RV. Administered by Coach-Net®, this service gives Coachmen owners 24/7 access to operational, technical and emergency road services, including towing, fuel delivery, jump starts, lockout service, tire changes, mobile mechanic and unlimited technical advice. So no matter where you go, we're ready to help!



Forest River, Inc. encourages our customers to purchase their Forest River products from a local dealership whenever possible for the following reasons:

It is the goal of Forest River, Inc. that all of our RV owners fully enjoy the RV experience and that customer satisfaction meets or exceeds their expectations!

- 1) Forest River, Inc. dealers are independently owned and operated businesses so priority service and scheduling is at their discretion and is often provided to customers that purchased their unit at that dealership.
- 2) Purchasing locally allows customers to establish meaningful relationships with a dealer, enhancing the RV experience through assistance with product questions, user tips or RV regulations for your state or country, and much more!
- 3) Canadian customers must meet requirements to bring an RV purchased out of the country to their home. These requirements may involve additional inspections and certifications, taxes and fees. Your local Canadian Dealer is a professional at meeting these requirements.
- 4) Scheduling timely warranty repairs and adjustments through a local dealership provides far greater flexibility and convenience to you, the customer!

Owners club discounts and more — A free one-year membership in the Coachmen Owners Association comes with the purchase of any Coachmen product. This add-on value not only provides a host of travel services and campground discounts, but also a 24/7 online service that locates needed services while

offering member savings at more than 180,000 merchants across the country. And, of course, the COA is an excellent way to share experiences with other Coachmen owners through rallies and caravans.



Brookstone with Optional Diamond Edition Paint



**Learn More**  
Scan this barcode using a QR Reader on your smart phone to learn more about Forest River.



A Berkshire Hathaway company.



To learn more about Coachmen RV and our products and see how Coachmen is making the easy life easier, visit [www.coachmenrv.com](http://www.coachmenrv.com)

YOUR BROOKSTONE DEALER

Coachmen Recreational Vehicle, a division of Forest River P.O. Box 30, Middlebury, IN 46540

All information contained in this brochure is believed to be accurate at the time of publication. However, during the model year, it may be necessary to make revisions, and Coachmen reserves the right to make all such changes without notice, including changes in prices, colors, materials, equipment and specifications, as well as the addition of new models and the discontinuance of models shown in this brochure. Therefore, please consult with your Coachmen dealer and confirm the existence of any materials, design or specifications that are material to your purchase decision. Printed in USA FOR I020 2012I221