

Go Anywhere | **Go Any Time** | Go Now

ANYTIME

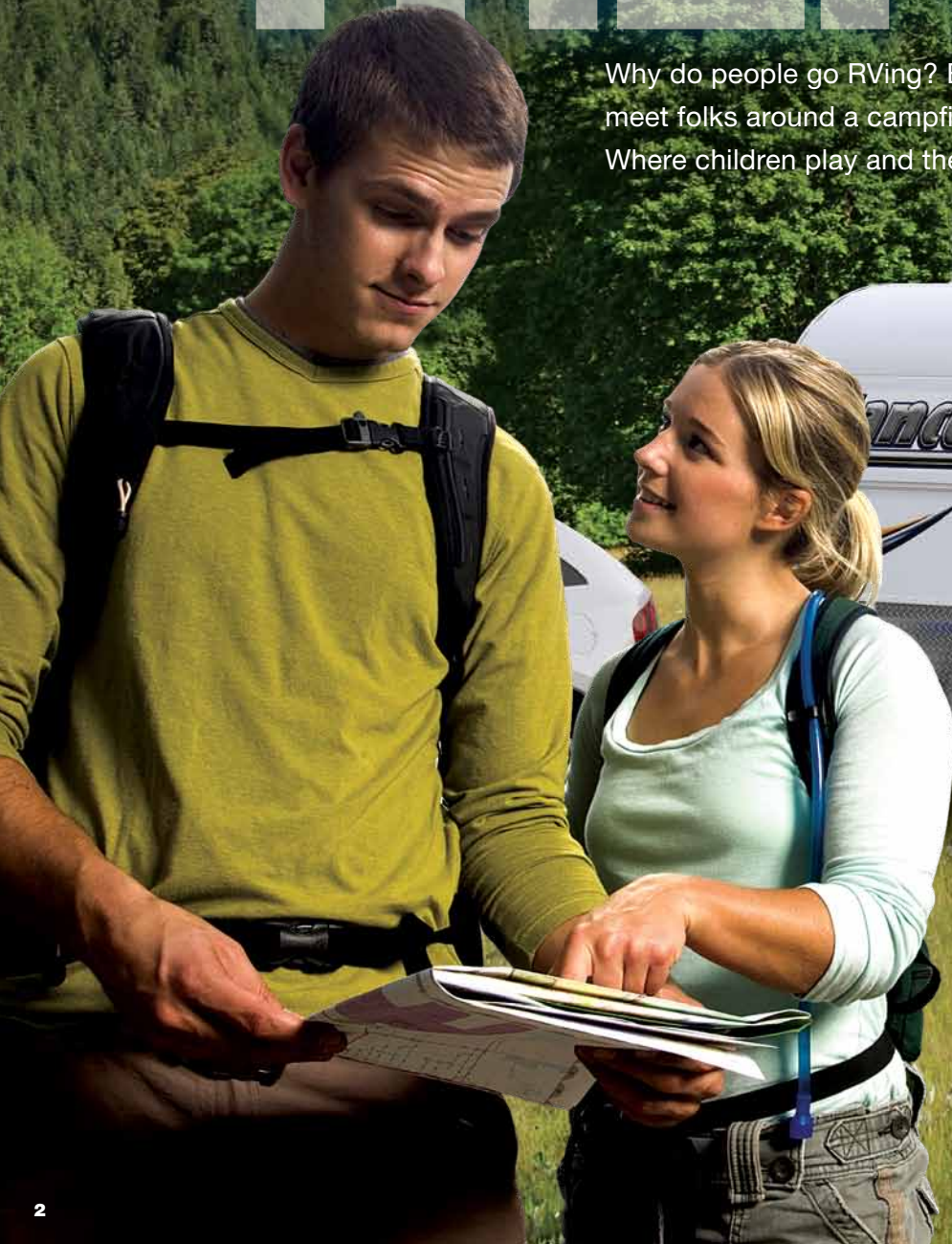


Lance

2013 | TRAVEL TRAILERS

THERE ARE

Why do people go RVing? Because of community. A place of family values. Where you can meet folks around a campfire and chat like you've known each other for a lifetime. Where children play and their laughter is reminiscent of times gone by.




"The beauty and charm of the wilderness are his for the asking, for the edges of the wilderness lie close beside the beaten roads of the present travel." — Theodore Roosevelt

"Keep close to Nature's heart... and break clear away, once in a while, and climb a mountain or spend a week in the woods. Wash your spirit clean." — John Muir

PLACES

Where Everyone is Your Friend.



The all-new 2013 Ultralight Travel Trailers from Lance are designed with those family values in mind – by RVers who build and use RVs. And now towing is easier than ever*. Lance's Ultralights were designed to hitch up to daily drivers, just like yours*, with as little as a 3500lb GVWR tow capacity. Who would have thought your existing family vehicle* could be half of a world of memories just waiting to be discovered!

** Match your trailer and tow vehicle correctly. See the legal disclaimer on page 20.*

Lance. **Built for Memories.**

FAMILY

Create a Lifetime of Memories.

Lance Travel Trailers. Fulfilling Dreams One Destination at a Time.

There was a time in your life when you first looked up and discovered the stars. You might have been in the country. Or camping with your parents. Today, you're sharing the dream with your family, and building memories that will last for generations to come. That's what's so special about camping – the outdoors and the RV Community. And that's why Lance is committed to building the best travel trailers possible.

When you are camping, Lance wants your trip to be one filled with outings, memorable photos and campfire songs. That's why we engineer our products to stand up to years of real-world use. We want to be there with you on your journeys for years to come. Providing a quality, dependable home away from home.

Lance. We'll Take You There.



The Lance Difference

Since 1965 Lance has been building America's most popular truck campers. And today, many of them are still on the road – a true testament to the company's philosophy that Quality Comes First. Now Lance is making its mark with travel trailers that are the new towable of choice.

Based in California – the nation's most demanding state for building safe products – Lance manufactures from a State-of-the-Art Production Facility – a 141,000 square foot, 22 acre campus – campus because Lance continues to learn from its dealers and from every single customer who provides ongoing feedback for improvement and new product design.

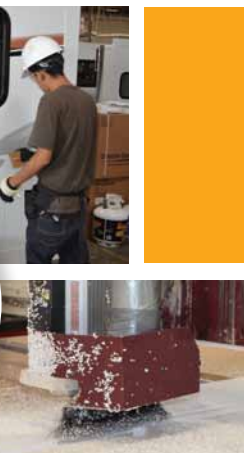
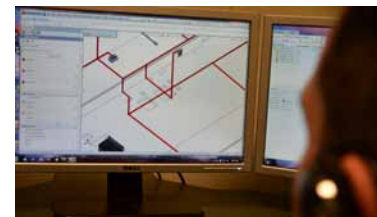
Ideas born from this process include LanceLock™, the use of Azdel™, Lite-Ply™ and the removal of all mercury from the trailer making for an eco-friendly, toxin-free RV.

These are just a few of the examples of our advanced engineering that contributes to a quality product.

That's why for the last decade, Lance has won the prestigious DSI Award (Dealer Satisfaction Index) for quality almost every year. We're also rated Best in Owner Satisfaction by our customers who are often repeat buyers and a source of referrals for new customers.



It doesn't stop there. To be a Lance travel trailer dealer requires commitment. Every dealer goes through extensive training giving us a Comprehensive Authorized Dealership Network across the United States and Canada. Whether a first-time or repeat customer, in need of service or trailer education – our network is always there for you.



Dare to Compare. **Discover the Lance Difference.**

Small on Size. Big on Features.

If you're looking for a small trailer that doesn't make any compromises – the 1274 is waiting for you. With a dry weight of 2200 pounds, it's an easy tow for smaller vehicles or SUVs*. And the 1274 is even better for 2013 with all new interiors including upgraded wall panels, counter surfaces, flooring and beautiful décor packages.

It's hard to imagine that a trailer as small as the 1274 has a dry bath. But yes it does. The dinette converts into a very large, comfortable sleeping space. And if you want even more sleeping capacity – order the tent option which adds private sleeping space on the aft wall of the trailer. Now imagine yourself in one of those hard to get away places. The 1274 will take you there.

** Match your trailer and tow vehicle correctly. See the legal disclaimer on page 20.*



1274



FLOOR LENGTH	12'9"
DRY WEIGHT	2200 Lbs.
HITCH DRY WEIGHT	205 Lbs.
CCC	1000 Lbs.
GVWR	3500 Lbs.
SLEEPING CAPACITY	Up to 4 Adults



Super Spacious. Super Slide.

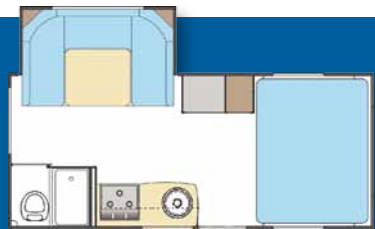
If you're looking for more room, you're going to really be impressed with the 1575. Due to our lightweight engineering technology, we were able to fit the 1575 with our "Super Slide" dinette and keep the weight at just 2575 pounds*. With large windows and skylights in the living and bath areas – this trailer feels much larger than other trailers of similar size.

Besides the solid Lance engineering including Azdel™ which replaces wood from walls and our Lite-Ply™ that makes cabinets strong and light – you get the completely redesigned decors with glazed cabinet doors, stunning counters and table tops to name a few. The 1575 also features a dry bath and very comfortable sleeping for 4, all standard. The 1575. Small is the new big.

** Match your trailer and tow vehicle correctly. See the legal disclaimer on page 20.*



1575



FLOOR LENGTH	15'5"
DRY WEIGHT	2575 Lbs.
HITCH DRY WEIGHT	230 Lbs.
CCC	900 Lbs.
GVWR	3500 Lbs.
SLEEPING CAPACITY	Up to 4 Adults



Adventure Further.

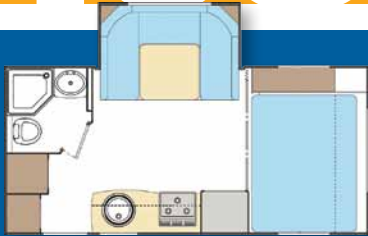
If you're looking for more living space and storage – the 1685 was made for you. It features a complete dry bath, larger kitchen counter space, along with the Super Slide and forward queen-sized bed. All this comfort and luxury weighing in at just 3405 pounds and abundant storage too!

The new raised panel glazed cabinet doors along with the new rich wood paneling and laminated counter and table surfaces give the 1685 a very elegant look. You can also specify the 4 Seasons package and go places others can only imagine. Make your base camp with a 1685 today.

** Match your trailer and tow vehicle correctly. See the legal disclaimer on page 20.*



1685



FLOOR LENGTH	16'3"
DRY WEIGHT	3405 Lbs.
HITCH DRY WEIGHT	275 Lbs.
CCC	1955 Lbs.
GVWR	5400 Lbs.
SLEEPING CAPACITY	Up to 5 Adults



Room to Live.

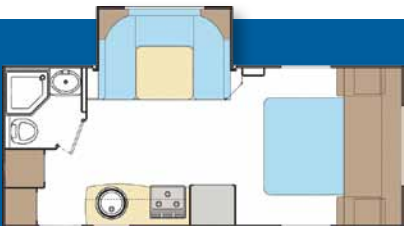
Reviewers have said towing an 1885 is like having nothing behind you at all. At Lance, that's by design. Low profiles. Solid engineering, Low drag. Excellent balance. But that's not the only reason you buy an RV. You want to go places, have fun and create memories.

Similar to the 1685, the 1885 offers 3 more feet and puts them to very good use. There's a lot more storage for one. Then there's the full walk-around queen-size bed. And if you want to entertain, opt for the convertible sofa-bed and you have over 150 square feet of interior space for your friends. Of course, after the party, you can sleep 4 in total solitude. Tailgating or deep-woods adventures – the 1885 is one versatile travel trailer.

** Match your trailer and tow vehicle correctly. See the legal disclaimer on page 20.*



1885



FLOOR LENGTH	19'3"
DRY WEIGHT	3700 Lbs.
HITCH DRY WEIGHT	260 Lbs.
CCC	1955 Lbs.
GVWR	5700 Lbs.
SLEEPING CAPACITY	Up to 4 Adults



Private Oasis.

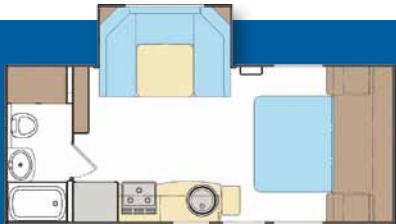
The 1985 features an open, spacious interior. At just 3660 pounds it's an easy tow for a larger SUV or pickup*. Similar to the 1885, instead of a corner bath, the 1985 features a full-width aft bathroom. And facing the entire living space is a conveniently placed entertainment center. So wherever you are seated – in the Super Slideout, on the bed, or if you opt for the convertible sofa/bed – every seat is the best seat in the house.

For 2013 the 1985 brings forward its solid construction that is typical Lance and now adds an incredible designer décor including new fabric choices, rich woods, stunning laminates and all new flooring. If you're looking for versatility in a medium sized package – you've found your personal, private oasis.

* Match your trailer and tow vehicle correctly. See the legal disclaimer on page 20.



1985



FLOOR LENGTH	18'10"
DRY WEIGHT	3660 Lbs.
HITCH DRY WEIGHT	335 Lbs.
CCC	1955 Lbs.
GVWR	5700 Lbs.
SLEEPING CAPACITY	Up to 4 Adults



All Aboard!

Got a family? How about hunting and fishing buddies? Get a 2185. At 3825 pounds, your SUV or pickup* can now do more than go to soccer practice.

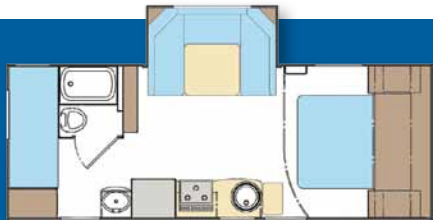
The 2185 has a walk-around queen-size bed that can be optionally ordered as a convertible sofa-bed turning the interior into a huge living space. The Super Slideout dinette seats 5+ easily and sleeps 2 comfortably. But the real news crosses the aft wall with triple bunk beds with room for 3 adults. And better still, the bunks can be reconfigured as a garage for bikes or toys while you travel.

So no more excuses. Invite your family and friends along for the ride. Host your next adventure with the 2185 today.

** Match your trailer and tow vehicle correctly. See the legal disclaimer on page 20.*



2185



FLOOR LENGTH	21'2"
DRY WEIGHT	3825 Lbs.
HITCH DRY WEIGHT	450 Lbs.
CCC	2100 Lbs.
GVWR	6000 Lbs.
SLEEPING CAPACITY	Up to 7 Adults



Conversation Starter.

The Lance 2285 is going to be the hot model this season. With two convenient entries, you're bound to have a lot of visitors – and for good reason. At a lean 4150 pounds – this is a lot of trailer for its size!

Through the aft door you have what is the equivalent of a great room. The large corner galley has two windows for an expansive view and the Super Slide dinette is opposite a full-size sofa bed. The entire space is conveniently situated to view the all-new entertainment center. Forward is a private bedroom with bath, vanity, walk-around queen-sized bed and a second entry door.

The 2285 is designed to bring people together. Just find your favorite spot and set up camp. And you'll never want to go back to civilization.

** Match your trailer and tow vehicle correctly. See the legal disclaimer on page 20.*



2285



FLOOR LENGTH	22'6"
DRY WEIGHT	4150 Lbs.
HITCH DRY WEIGHT	415 Lbs.
CCC	1800 Lbs.
GVWR	6000 Lbs.
SLEEPING CAPACITY	Up to 6 Adults



Full Wall Slide. Gourmet Delight.

The 2385 was designed for easy living. You want it all, yet you want it in a package compact and light enough to tow with a large SUV or truck*. Well, just try to find all the features Lance packed into this model in under 24' floor length.

The first thing you'll notice is the massive counter space in the galley. This may very well be the largest galley in any RV! Adjacent is Lance's Super Slide dinette sitting opposite the entertainment center for convenient viewing.

The big surprise is aft. The 2385 has a full bedroom with a residential queen-size bed. Opposite is a vanity/desk with drawers for storage. Wardrobes flank both sides.

Make a statement when you set up camp. Expect a line to form at the door.

* Match your trailer and tow vehicle correctly. See the legal disclaimer on page 20.



2385



FLOOR LENGTH	23'6"
DRY WEIGHT	4250 Lbs.
HITCH DRY WEIGHT	465 Lbs.
CCC	2000 Lbs.
GVWR	6300 Lbs.
SLEEPING CAPACITY	Up to 4 Adults





Eco Green

The Lance Standard for being Eco Green delivers the highest commitment to being Green possible.

The commitment began with visionary management having every element of the operation contribute to the green effort. To that end, Lance began by building a state-of-the-art 141,000 square foot campus that features “smart buildings” — buildings that utilize natural light, meter heating and air conditioning office-by-office and are tied into the power grid to participate in power savings programs. Even the lighting is intelligent.

Lance searches the globe for the best materials available. Lance products feature Azdel™ which replaces wood in the structure. It's also lighter and has exceptional insulation properties saving on heating and air conditioning needs. Lite-ply™ not only makes for superior wood work, it's farmed from renewable resources to avoid deforestation.

Every glue and cleaner Lance uses meets or exceeds the highest standards possible – and that's saying a lot in California where the standards are the nations' toughest.

In production, the engineering is so advanced that computers use CNC routers to get the most out of every sheet of product for minimal waste. At the end of a production day, Lance produces less waste than just about any RV manufacturer – and most of ours is recycled.

But it doesn't stop there. Lance products have always been made better. Built since 1965, many Lance products are still in service which means they are having little impact on landfills – but rather continuing to perform their intended task...camping.

And for 2013 all Lance products are mercury-free. Yes, it costs more to provide you with a safer RV and protect the environment – but at Lance – it's how we do business. Even our literature is printed on FSC (Forest Stewardship Council) approved paper which uses recycled products protecting our forests for generations to come.

At Lance, our Eco contribution is attuned to the breath of Mother Earth – conforming to nature rather than the other way around.



The Lance Look

You've always known Lance for our engineering. Now you're going to be equally impressed by the décor of our products. We brought in a professional interior design group to create the perfect Lance for 2013. Our requirement was that it had to be timeless, rugged and stylish.



You'll find beautiful new woods, wall treatments, and three fabric combinations so beautiful that choosing one will be a challenge. So take your pick. Whatever your choice – it's 100% Lance – designed by campers, for campers.



Jet Stream



Hot Spot



Rain Forest

Environmentally Friendly **from the Ground Up.**

4 Seasons All Weather Package



Do you really want to truly get away from it all? Well you can with the Lance Four Seasons Certified option. You'll stay cooler in the heat, and remain toasty and safe down to below freezing temperatures.

When your Lance Trailer is equipped with the 4 Seasons All Weather Package, you'll be "extreme weather ready". So while other campers have their RVs in storage – you'll be enjoying the wilderness all year round.

Some of the features that earn the prestigious 4 Seasons badge include:

Go ahead. Get away. Far, far away.



Lance features an advanced ducting system for heat distribution. Unlike many other companies, Lance devotes a lot of time engineering exacting routes so that you won't have hot or cold spots in your trailer. Instead, the temperature is even throughout. The holding tanks are part of this system which is unique to Lance trailers.



The holding tanks are not only insulated but are part of the advanced Lance ducted heating system. Even the drain valves and water drain are insulated to protect your plumbing systems from freezing temperatures.



The water heater features a bypass and winterizing valve to make storing of your trailer easy. This feature protects your system for optimal performance and longer-life.



Dual pane windows are proven in their insulating properties. Not only do they increase the "R" value, they look great and offer more sound proofing over standard windows. The dark tint also repels heat and protects interior fabrics.



Further improving insulation is the use of Azdel™ which is a Thermoplastic Composite product that eliminates wood from Lance trailer walls. As a result, rot, mold and mildew are all but eliminated while simultaneously increasing the "R" value and sound proofing.

* Not available 1274 and 1575

Selected Standard+Optional Features



12 Volt Disconnect provides for easy power shut-off



Abundant Storage is found in every nook and cranny on your Lance trailer



Aluminum Wheels look good, are lighter and dissipate heat better



Black Tank Flush is a sprayer hookup for thoroughly cleaning your black holding tank



iPod Connector allows your Apple™ devices to connect with your RV stereo system



Swivel Rockers are available on the 2285 and replace the sofa bed



Tent Option adds room for 2 with the amenities of a trailer and the feeling of being outdoors



Dual Pane Tinted Radius Windows add additional insulation as part of the 4 Seasons package



Phat Ladder gives you access to the "Walk-On Roof" (except 1274 and 1575)



Hitch Light makes it easy to hitch-up in the dark



Large Bathrooms are spacious with a residential feel and porcelain toilet



LED Lighting replaces incandescent reducing power usage and is eco-friendly



Easy-Release Tire Carrier is quick and easy. No need to crawl under the trailer to release the spare tire if needed.



Stabilizer Jacks help keep your trailer stable on your campsite (Electric OPT)



Easy Propane Access Flip-up top cover allows you to easily turn on or off



Cable/Satellite Hookups allow both cable and satellite TV without switching cables on the TV



With 84 Less Roof Holes in our trailers, we eliminate unnecessary screw holes – which help protect your RV



Exterior BBQ Hook-Up makes grilling fast, safe and easy at the campground



Solar Power recharges your batteries when you're living off the grid



2-Way Refrigerator allows operation from propane or 110 volt sources

Lance Design and Construction. **The Legacy of Quality Begins Here.**

The roof is made of energy-star rated TPO with vents that clamp in place eliminating screws and potential leaks. Integrated rain gutters and drip spouts prevent the sides of your coach from streaking.

Rigid block foam insulation yields maximum "R" value and resists sagging and promotes structural strength.

Interiors are constructed of Lite-Ply™ imported from Europe. This superior product is solid, lighter and stronger providing increased "R" value, beauty and durability.

3D advanced CAD engineering creates precise plans that run CNC machinery. The result is that every part is perfect every time.

High quality fiberglass exterior panels are laminated under intense pressure with heat-setting adhesives for years of trouble-free service.

Keeping it all together are stainless steel fasteners. Unlike our competitors, this expensive hardware resists corrosion making for a lasting investment.

Engineered super lightweight powder coated tempered steel custom chassis Huck bolt construction eliminates weak and rust-prone welds.

Heavy duty rubber torsion-bar suspension axles with EZ-lube bearings insure a smooth ride and easy maintenance, and self adjusting brakes.

Lance's aluminum framed superstructure provides for an extremely solid trailer that is also light-weight.

Slideout rooms use Schwintek™ hardware for smooth, dependable operation. Lighter in weight than other mechanisms, they're also smaller allowing for more living space.

Lance uses more expensive Azdel™ in place of Luan wood virtually eliminating mold and mildew. It's also lighter and has a better "R" value for superior insulation.

All seals use an anti-wicking material to prevent moisture from transferring to the laminate walls.

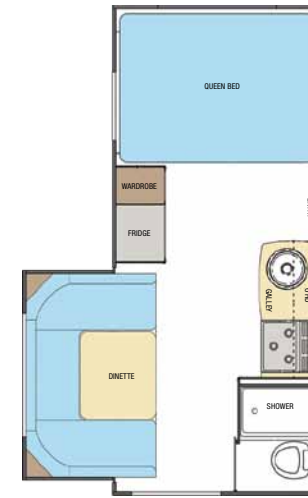
...and goes on the road with you.

Specifications+Standards+Options

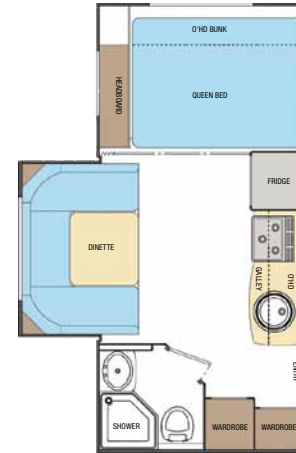
	1274	1575	1685	1885	1985	2185	2285	2385
Floor Length	12'9"	15'5"	16'3"	19'3"	18'10"	21'2"	22'6"	23'6"
Overall Length	16'10"	19'6"	20'9"	23'9"	23'4"	25'8"	27'0"	28'0"
Exterior Width	84 3/8"	84 3/8"	96 3/8"	96 3/8"	96 3/8"	96 3/8"	96 3/8"	96 3/8"
Exterior Height	117"	117"	119"	119"	119"	119"	119"	119"
Interior Height	78"	78"	78"	78"	78"	78"	78"	78"
Gross Dry Weight, Lbs	2200	2575	3405	3700	3660	3825	4150	4250
Hitch Dry Weight, Lbs	205	230	275	260	335	450	415	465
CCC, Lbs	1000	900	1955	1955	1955	2100	1800	2000
GVWR, Lbs	3500	3500	5400	5700	5700	6000	6000	6300
Tire Size, ST205/75R14	STD	STD	STD	STD	STD	STD	STD	STD
Fresh Water, Gallons	18	26	45	45	45	45	45	45
Grey Water, Gallons	26	26	40	40	40	40	80	80
Black Water, Gallons	25	25	40	40	40	40	40	40
Propane Capacity, Tanks/Gallons	1/5	1/5	2/5	2/5	2/5	2/5	2/5	2/5
Sleeping Capacity, Min/Opt Max	2/4	4	5	4	4	7	6	4



Model 1274



Model 1575



Model 1685

Exterior	1274	1575	1685	1885	1985	2185	2285	2385
Laminated and Bonded Fiberglass Exterior	•	•	•	•	•	•	•	•
Manual Stabilizer and Tongue Jacks	•	•	•	•	•	•	•	•
Electric Stabilizer Jacks			○	○	○	○	○	○
Electric Tongue Jack	○	○	○	○	○	○	○	○
Aluminum Wheels w/Radial Tires, Spare Tire Carrier	•	•	•	•	•	•	•	•
Spare Tire	○	○	○	○	○	○	○	○
Entry Step	•	•	•	•	•	•	•	•
Radius Slider Tinted Windows	•	•	•	•	•	•	•	•
Radius Acrylic Tinted Thermopane Euro Windows	•	•	•	•	•	•	•	•
Radius Tinted Insulated Dual Pane Sliding Windows	○	○	○	○	○	○	○	○
Acrylic Tinted Thermopane Front Window	•	•	•	•	•	•	•	•
Front Window with Rockguard	•	•	○	○	○	○	○	○
Anodized Phat Ladder			○	○	○	○	○	○
LED Tail, Running and Backup Lighting	•	•	•	•	•	•	•	•
Diamond Plate Lower Front Stone Guard	•	•	•	•	•	•	•	•
Radius Cornered Storage Compartment Doors	•	•	•	•	•	•	•	•
Radius Entry Door w/Window	•	•	•	•	•	•	•	•
Roof Vent in Bed & Living Areas	•	•	•	•	•	•	•	•
Skylight in Galley/Dinette Area	•	•	•	•	•	•	•	•
Wash Station	•	•	•	•	•	•	•	•

• = Standard Option ○ = Optional Feature

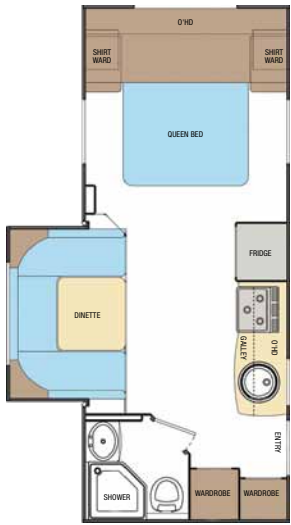
Exterior (cont.)	1274	1575	1685	1885	1985	2185	2285	2385
BBQ Propane Connection	•	•	•	•	•	•	•	•
Bike Rack	○	○	○	○	○	○	○	○
Swing-Out Entry Assist Handle	○	○	•	•	•	•	•	•
Pull-Out Storage Tray	○	○	○	○	○	○	○	○
Awning Slideout Cover			○	○	○	○	○	○
Power Rollout Awning - Optional	8'	10'	12'	16'	16'	18'	18'	18'

Construction/Insulation	1274	1575	1685	1885	1985	2185	2285	2385
One-Piece TPO Roof			•	•	•	•	•	•
One-Piece Fiberglass Roof	•	•						
Laminated, Insulated Floor & Roof	•	•	•	•	•	•	•	•
Block Foam Insulation Throughout	•	•	•	•	•	•	•	•
Aluminum Framed Floors, Walls & Ceiling	•	•	•	•	•	•	•	•
Azdel™ Light Weight, Eco-Friendly Substrates	•	•	•	•	•	•	•	•
Lite-Ply™ Cabinet Construction	•	•	•	•	•	•	•	•

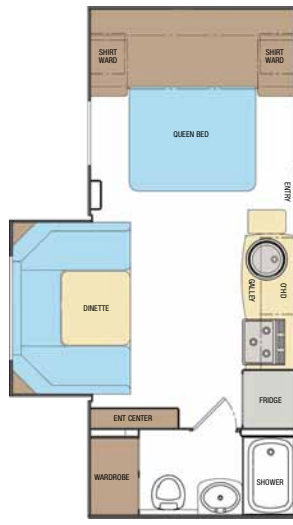
Interior Decor	1274	1575	1685	1885	1985	2185	2285	2385
Sofa Bed								•
Swivel Rocker(s)							○	•
Hardwood Framed Flat Panel Cabinet Doors w/Glazing	•	•	•	•	•	•	•	•
Hardwood Raised Panel O'HD Cabinet Doors w/Glazing			•	•	•	•	•	•

Interior Decor (cont.)	1274	1575	1685	1885	1985	2185	2285	2385
Full Extension Drawer Slides	•	•	•	•	•	•	•	•
Valance Boxes	•	•	•	•	•	•	•	•
Valances Attached to Interior Window Treatment		•						
Mini-Blinds in Galley and Living Area	•	•	•	•	•	•	•	•
Day/Night Shade in Dinette	•	•	•	•	•	•	•	•
Combo Screen/Shade on Windows		•						
Day/Night Shades for Living Area and Bedroom	○	○	○	○	○	○	○	○
Insulated Hatch Covers	○	○	○	○	○	○	○	○
Wall Clock & Key Hanger		•	•	•	•	•	•	•

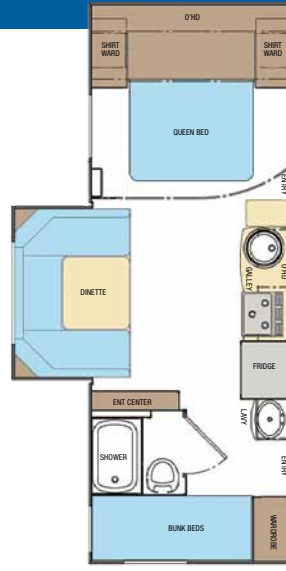
Galley/Appliances & Equipment	1274	1575	1685	1885	1985	2185	2285	2385
3-Burner Range	•	•	•	•	•	•	•	•
3-Burner High Output Range w/21" Oven & Cvr	○	○	○	○	○	○	○	○
Microwave Oven	○	○	○	○	○	○	○	○
2-Way Refrigerator (Cu. Ft.)	6	6	6	6	6	6	6	6
True 3-Way Refrigerator - 12V, 110V, Propane (Cu.Ft.)		5						
Upgraded Refrigerator		•	•	•	•	•	•	•
Door Panels - Black		•	•	•	•	•	•	•
Furnace, BTU	18M	18M	20M	25M	25M	25M	25M	25M
Furnace - Dual BTU - 15M/22M			○	○	○	○	○	○
Propane Tank (#/Gal)	1/5	1/5	2/5	2/5	2/5	2/5	2/5	2/5



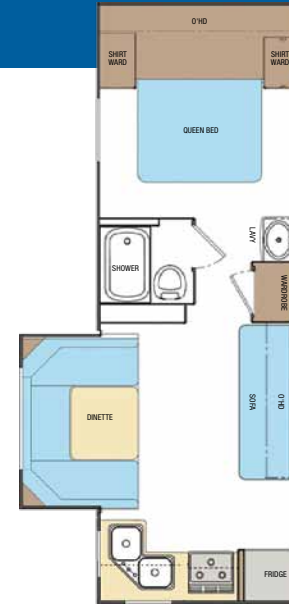
Model 1885



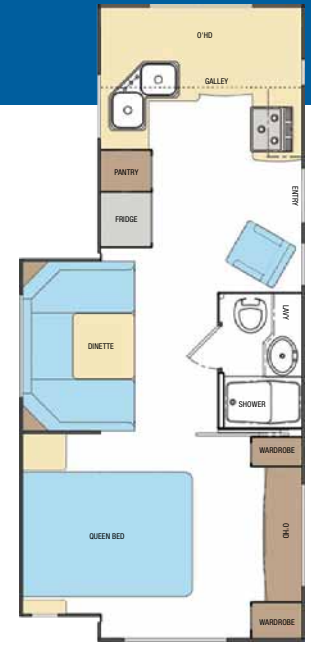
Model 1985



Model 2185



Model 2285



Model 2385

Galley/Appliances & Equip. (cont.)

	1274	1575	1685	1885	1985	2185	2285	2385
Propane Tank Cover			•	•	•	•	•	•
Range Hood w/Light & Fan, Backsplash	•	•	•	•	•	•	•	•
Folding Galley Extension				•	•	•		
Single Sink w/Pullout Faucet & Cover	•	•	•	•	•	•		
Double Sink w/Pullout Faucet & Cover							•	•
Wood Magazine & Spice Racks			•	•	•	•	•	•

Fresh and Waste Water Systems

Water Pump with In-Line Filter	•	•	•	•	•	•	•	•
Tankless Water Heater		•						
Water Heater Propane/Electric/DSI	•	○	•	•	•	•	•	•
Water Heater Bypass & Winterizing Valve	○		○	○	○	○	○	○
Winterizing Valve		•						
Enclosed, Insulated and Heated Fresh Water Tank	•	•	•	•	•	•	•	•
Enclosed, Insulated and Heated Holding Tanks			○	○	○	○	○	○

Bathroom

Porcelain Toilet - Foot Pedal Flush			•	•	•	•	•	•
Plastic Toilet - Foot Pedal Flush	•	•						
Black Tank Flush	•	•	•	•	•	•	•	•
Medicine Cabinet with Mirror Door	•	•	•	•	•	•	•	•
Dual Pane Skylight	•	•	•	•	•	•	•	•
Ducted Heat Outlet			•	•	•	•	•	•

Dinette

	1274	1575	1685	1885	1985	2185	2285	2385
Dinette w/Reversible Cushions	•	•	•	•	•	•	•	•
Roll-Out Storage Drawers			○	•	•	•	•	•

Bedroom

60 x 80 Queen Innerspring Pillow-Top Mattress and Bedspread			•	•	•	•	•	•
Headboard					•	•	•	•
Convertible Sofa/Queen Bed						○	○	○
Bed Maid			○	○	○	○	○	○
Overhead Cabinet Bunk				•				
Foldup Bunk Beds							•	
Fold Down Tent Bed w/Bed Pad		○						
LED Reading Lights	•	•	•	•	•	•	•	•
Privacy Curtain			•	•	•	•	•	•
Privacy Divider Doors							•	•

Electrical

LED Systems Monitor Panel w/Battery Indicator	•	•	•	•	•	•	•	•
55 Amp Converter/Loadcenter			•	•	•	•	•	•
45 Amp Converter/Loadcenter	•	•						
LED Interior Lighting	•	•	•	•	•	•	•	•
Incandescent Interior Lighting, Under Overheads	•	•	•	•	•	•	•	•

Electrical (cont.)

	1274	1575	1685	1885	1985	2185	2285	2385
Storage Compartment Lighting	•	•	•	•	•	•	•	•
Single Battery Rack w/Manual Battery Disconnect	•	•						
Double Battery Rack w/Manual Battery Disconnect				•	•	•	•	•
Vanity Lighting Over Medicine Cabinet				•	•	•	•	•
A/C - Coleman 9,000 BTU w/Wall Thermostat	○	○	○	○	○	○	○	○
A/C - Coleman 13,500 BTU w/Wall Thermostat	○	○	○	○	○	○	○	○
Fantastic Roof Vent	○	○	○	○	○	○	○	○
Power Roof Vent in Bath	•	•	•	•	•	•	•	•
Pre-Wired for Park, Sat Dish, A/C, Fantastic Fan	•	•	•	•	•	•	•	•
HDTV Antenna	•	•	•	•	•	•	•	•
AM/FM/DVD/iPod Stereo w/ Int & Ext Speakers & Ant.	•	•	•	•	•	•	•	•
12 Volt 24" HDTV	○	○	○	○	○	○	○	○
Switched LED Patio Light	•	•	•	•	•	•	•	•
LED Hitch Light	•	•	•	•	•	•	•	•
Solar Panel Pre-Wire	○	○	○	○	○	○	○	○
145 Watt Solar Panel	○	○	○	○	○	○	○	○
Exterior 110V Patio Outlet	•	•	•	•	•	•	•	•

LANCE



LanceCamper.com



The 2013 Lance TRAVEL TRAILER Brochure. ©2012 Lance Camper Manufacturing Corporation (LCMC). All rights reserved. Lance, the Lance logomark, the Lance logomark with chevron, America's Favorite Truck Camper, RV: Recreational Versatility, The Most Versatile RVs On The Planet, America's Favorite Campers – Earth's Most Versatile RVs, The Lance Look, Lance Custom Design, Bed-Maid, LanceLock, Living The Lance Life, SportsCamper and other exclusive Lance product names, marks or designations are trademarks, service marks or registered trademarks of LCMC. All other marks are property of their respective owners. **All product data, graphics and photography, illustrations and/or renderings in this book were as accurate as possible at press time. Subsequent refinements during the model year may be evident in the actual product. LCMC reserves the right to change prices, colors, materials, equipment and specifications without notice – as well as to add, modify or discontinue models shown in promotional materials and/or on its websites.** All weights, fuel and liquid capacities are approximate and dimensions are nominal. LCMC has designed its travel trailers to provide a variety of potential users for owners. Each model features optimum living, storage, fluid, seating and sleeping capacities. Though each owner enjoys this potential, ultimately, it's that purchaser's sole responsibility to select the proper Lance travel trailer and towing equipment appropriate to their tow vehicle without exceeding safe operating and towing capacities. Your Factory Authorized Lance Dealer can advise you of the operating parameters for your particular situation, and can confirm prices and product specifications material to your purchase decision. See website for full warranty information. Brochure printed in the USA on FSM paper. 60M. 0812. Rev1.