



NITRO CIRCUS APPROVED

Nitro Circus is an “action sport collective” conceived by Travis Pastrana. If you follow motocross or extreme sports, you may have been amazed by Travis and the crew. They have been featured on TV shows, on tour and in an upcoming 3D film.

Our toy hauler has been with Nitro Circus for skydiving, base jumping, rally car racing and the X Games. Travis and gang know they can haul more gear and toys, even with a 3/4 ton pickup truck. You can follow them at nitrocircus.com



Nitro Circus is a trademark of Godfrey Entertainment, Inc. Used by permission.

MORE >>> Go see more details on construction, features and benefits at: crossroadsrv.com/elevation

CROSSROADS®
RECREATIONAL VEHICLES



YOUR LOCAL CROSSROADS DEALER:

305 HAWPATCH DRIVE 🍀 TOPEKA, IN 46571 🍀 PH 260 593-3850 🍀 FX 260 593-2088



MADE WITH AN ATTITUDE

Our New Generation Vehicles are built with an attitude of doing things differently. Every other RV company says and does pretty much the same thing. Those guys are boring. We're here to change everything—for the better!

So what's NGV? It's seeing beyond the status quo and designing and building a new generation of user-friendly products for a new generation of RVers. We know that there is a need for a fresher product for the retail market. You don't want your Grandpa's RV. You want what we're offering—NGV by CrossRoads.





LIGHTEN UP...PLAY HARD!

LUXURY LIGHT WEIGHT TOY HAULER

NOT LIGHT ON LIVING!



TF4012 Living Space in Malibu décor



TF3912 Master Bedroom



4012 Outside Kitchen



4012 Bathroom



TOTAL COOL FACTOR.

BIG ON FEATURES!



Aluminum frame construction on the sidewalls, roof and floor is 20% less weight than comparable wood/aluminum hauler. What does that mean for you?

- <<< Elevation is 3/4 Ton Towable... Even with a Loaded Garage!
- <<< On Board WI-FI Ranger and USB Charging Stations
- <<< A 1 Piece, Uncut Frame that Remains Continuously In-Tact = "Strongest in Class" Foundation!
- <<< Elevation Weighs Up To 20% Less than Every Other Toy-Hauler In Its Class!
- <<< Elevation Toy-Haulers are Nitro Circus Tested & Approved!





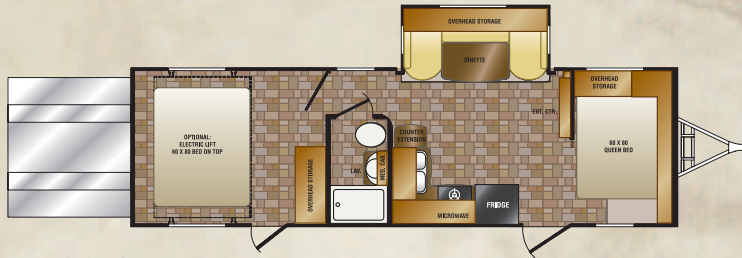
EASY TO TOW.

STANDARDS & OPTIONS

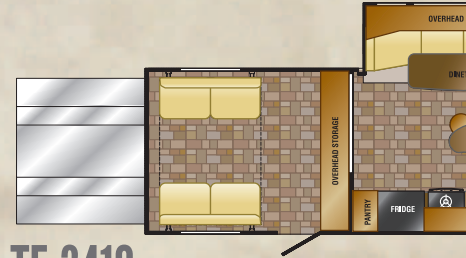
ELEVATION STANDARDS* (FIFTH WHEELS)

INTERIOR

- 8' Ceiling in main living area
- HD TV with bracket - size may vary by floor plan
- Nitro Circus custom sound system (Sub Woofer, and 6 Speakers: 4 on the inside and 2 exterior), rear stereo with iPod/MP3 connectivity, Pandora link, and Kicker brand speakers
- Blu-Ray player with internet apps
- VIZIO home theater sound bar
- 22" Oven with 3-burner range
- 2-Bar stools (some models)
- Microwave - black
- Refrigerator - 8 cu. ft.
- Solid surface counter top
- 24" TV in bedroom
- Night shades
- Queen memory foam mattress
- Fantastic bathroom fan
- Foot flush toilet - porcelain
- Skylight over shower
- USB charging stations
- Backlit blue LED light switches
- Onboard WI-FI Ranger
- Lane residential furniture with lifetime warranty
- Residential wood blinds in living area
- 7 Function remote system
- Washer/dryer prep



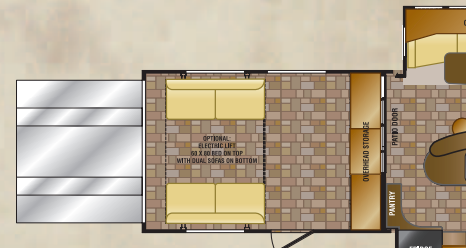
TT-2810



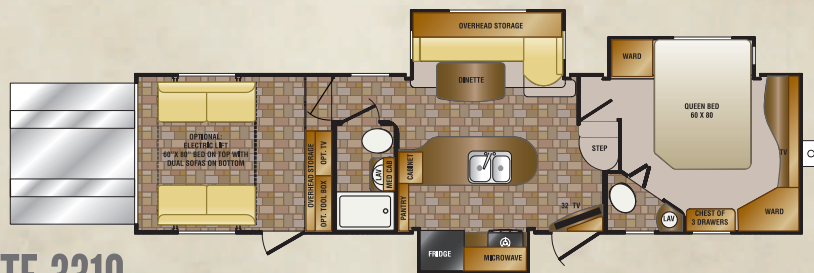
TF-3410



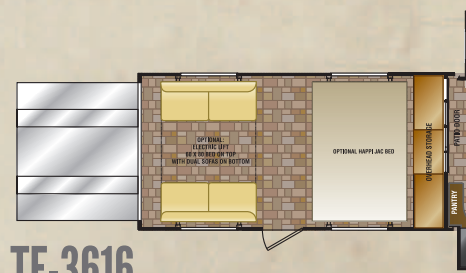
TT-3210



TF-3612



TF-3310



TF-3616

SPECIFICATIONS

ALL SPECIFICATIONS SUBJECT TO CHANGE WITHOUT NOTICE.

SPECIFICATIONS

	TT-2810	TT-3210	TF-3310	TF-3410
GVWR	9500	TBD	15500	16200
DRY WEIGHT	6780	7618	9985	10681
CARRYING CAPACITY	2720	TBD	5515	5519
HITCH WEIGHT	842	898	2208	2213
EXTERIOR LENGTH	31' 11"	36' 6"	34' 11"	36' 11"
EXTERIOR HEIGHT W/ A/C	11' 8"	11' 8"	13' 2"	13' 2"
GARAGE LENGTH	10'	10'	10'	10'

TANKS

TRAVEL TRAILERS – FRESH WATER CAPACITY: 54 gal. / BLACK WATER CAPACITY: 40 gal. / GREY/GALLEY CAPACITY: 80 gal.

EXTERIOR

- 16" Aluminum wheels
- 2-Security lights
- 2-Rear cargo exterior lights, adjustable
- 30 gallon fuel tank with gauge and timer switch
- 30" Radius entry door
- Awning - electric, lighted
- Cable/satellite hook-up
- Full size spare tire

- LED dock lighting on front cap
- Slam latch baggage doors

CONSTRUCTION

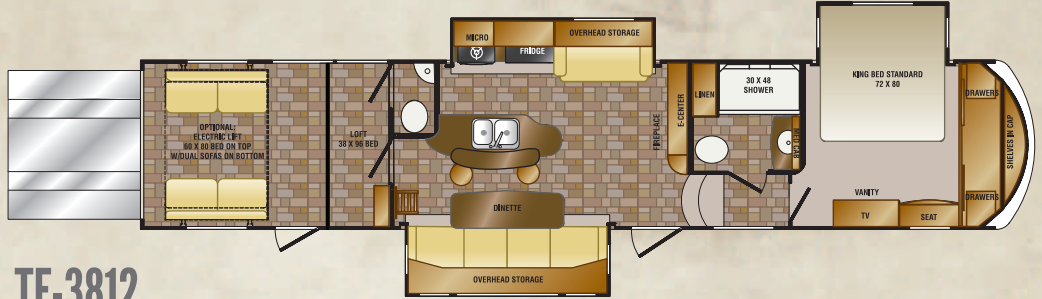
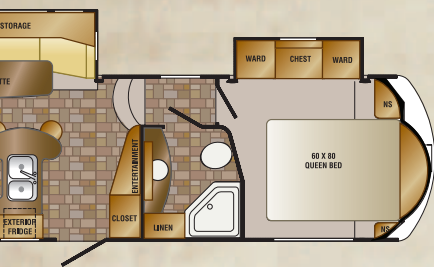
- Jacks- power landing- electric
- Power - 50 amp power cord
- Roof - One-piece, rolled-edge rubber
- Roof decking - 3/8" plywood
- Tank - 112 gallon fresh water
- Tank - 40 gallon black water

- Tank - 80 gallon grey water
- Tank - black tank flush
- Tinted safety glass windows
- Water heater - 10 gallon gas/ electric with DSI
- Water heater - bypass

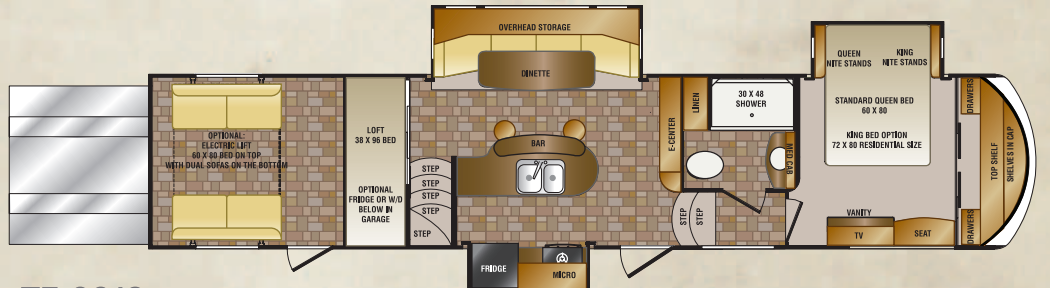
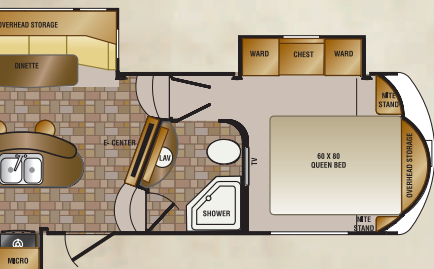
*Currently offered in 5th Wheel models only. See website for travel trailer details.

ELEVATION OPTIONS*

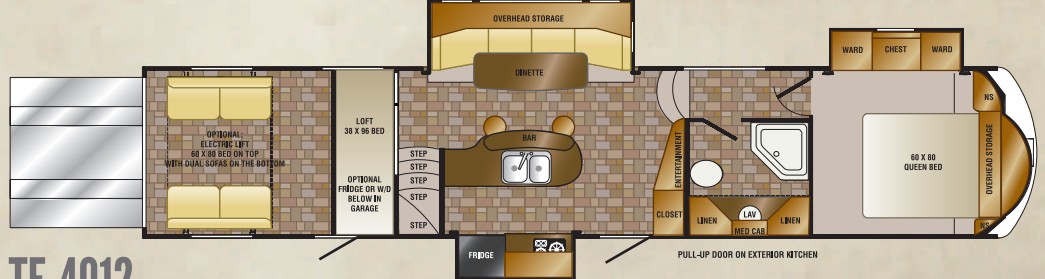
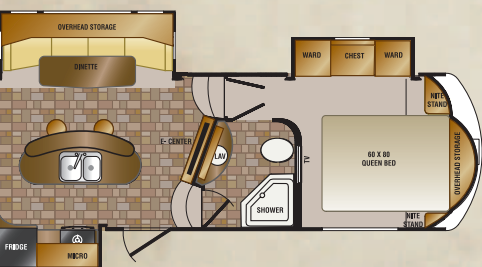
- 5.5 Onan generator
- HappiJac brand beds
- Second 15K BTU A/C in bedroom
- Second power awning
- 24" TV in garage
- Screen door for garage
- Work station in garage
- Rear patio with power awning
- Ground control leveling
- Partial paint system



TF-3812



TF-3912



TF-4012

TF-3612

- 16400
- 10910
- 5490
- 2400
- 37' 11"
- 13' 2"
- 12'

TF-3616

- 18000
- 11933
- 6067
- 2619
- 41' 11"
- 13' 2"
- 16'

TF-3812

- 18000
- 12450
- 5550
- 2908
- 42' 11"
- 13' 2"
- 12'

TF-3912

- 18000
- 11995
- 6005
- 2839
- 41' 3"
- 13' 2"
- 12'

TF-4012

- 18000
- 12339
- 5661
- 2946
- 42' 4"
- 13' 2"
- 12'

FIFTH WHEELS – FRESH WATER CAPACITY: 112 gal. / BLACK WATER CAPACITY: 40 gal. (80 gal. TF-3310) / GREY/GALLEY CAPACITY: 80 gal.