

MORE >>> Go see more details on construction, features & benefits at: crossroadsrv.com/zinger

CROSSROADS[®]
RECREATIONAL VEHICLES



YOUR LOCAL CROSSROADS DEALER:

305 HAWPATCH DRIVE 🍷 TOPEKA, IN 46571 🍷 PH 260 593-3850 🍷 FX 260 593-2088



DISCLAIMER: Product information is as accurate as possible at the date of publication of this brochure. All features, floorplans, and specifications in this brochure are subject to change without notice. Please also consult CrossRoads RV's website at www.crossroadsrv.com for more current product information and specifications. Tow Vehicle Disclaimer. CAUTION: Owners of CrossRoads recreational vehicles are solely responsible for the selection and proper use of tow vehicles. All customers should consult with a motor vehicle manufacturer or their dealer concerning the purchase and use of suitable tow vehicles for CrossRoads RV products. CrossRoads RV disclaims any liability or damages suffered as a result of the selection, operation, use or misuse of tow vehicle. CROSSROADS RV'S LIMITED WARRANTY DOES NOT COVER DAMAGE TO THE RECREATIONAL VEHICLE OR TOW VEHICLE AS A RESULT OF THE SELECTION, OPERATION, USE OR MISUSE OF THE TOW VEHICLE.



ZINGER

TRAVEL TRAILERS AND FIFTH WHEELS

Why Choose ZINGER?

Zinger is all about family fun! That's why we offer such a large variety of user-friendly features and interior designs including many bunk house models that can accommodate everyone. These camper-tested RVs are designed with lots of generous storage, spacious living areas,

and efficient kitchens that can feed the whole crew. Rich cherry wood finish gives the interior a look of elegance, and quality furnishings have extra amenities. But everyone agrees that Zinger's most outstanding characteristic is its incredible value. See for yourself!



ZT33BH Kitchen and living room



ZT25BH Kitchen/living area



ZT33BH Bunk room

Chestnut decor



ZT33BH Master bedroom

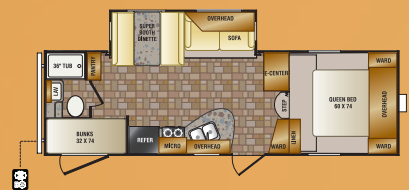
ZT33BH Bathroom

SEE MUCH MORE AT: CROSSROADSRV.COM/ZINGER *Get Started*

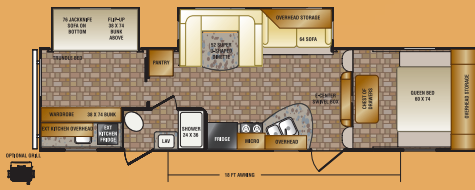
Zinger FLOORPLANS

FIFTH WHEEL

ZF25BH FIFTH WHEEL



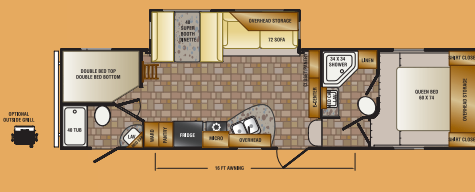
ZF31BH FIFTH WHEEL



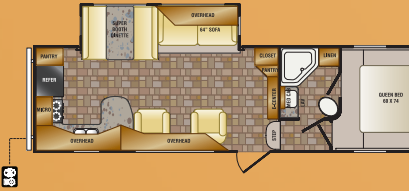
ZF29BH FIFTH WHEEL



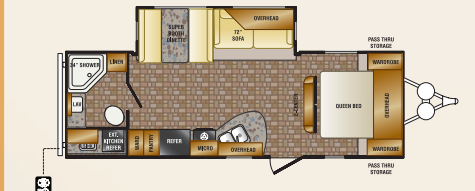
ZF32DB FIFTH WHEEL



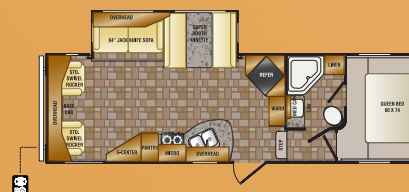
ZF29RK FIFTH WHEEL



ZT25RB TRAVEL TRAILER



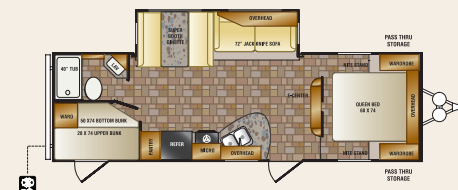
ZF30RL FIFTH WHEEL



ZT25SB TRAVEL TRAILER



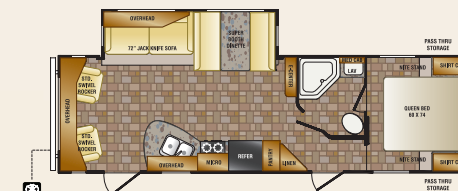
ZT26BH TRAVEL TRAILER



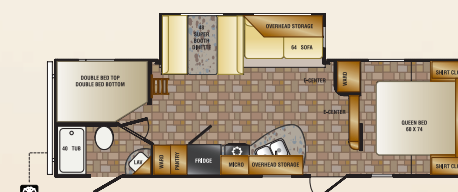
ZT26BL TRAVEL TRAILER



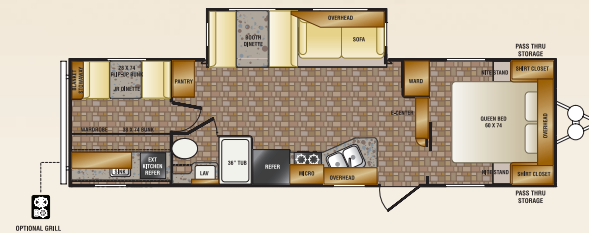
ZT27RL TRAVEL TRAILER



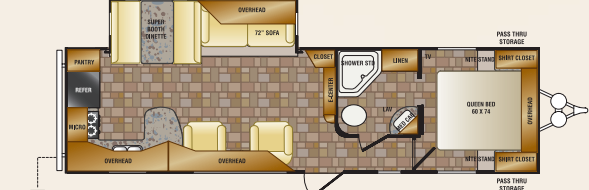
ZT28BH TRAVEL TRAILER



ZT30KB TRAVEL TRAILER



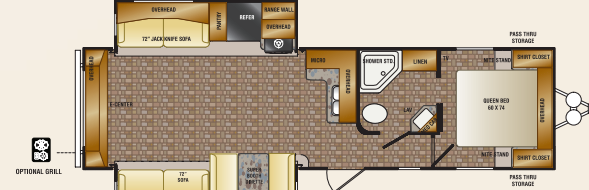
ZT30RK TRAVEL TRAILER



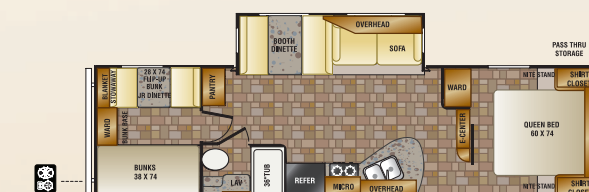
ZT31SB TRAVEL TRAILER



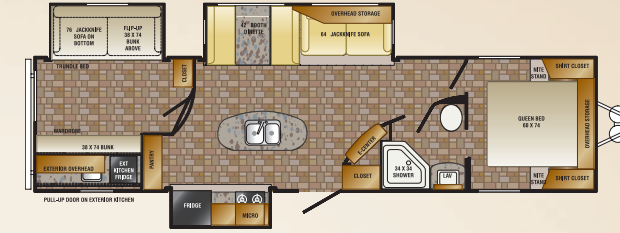
ZT32RE TRAVEL TRAILER



ZT32QB TRAVEL TRAILER



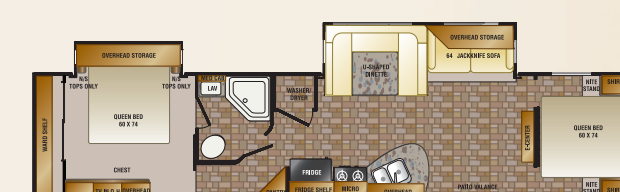
ZT33BH TRAVEL TRAILER



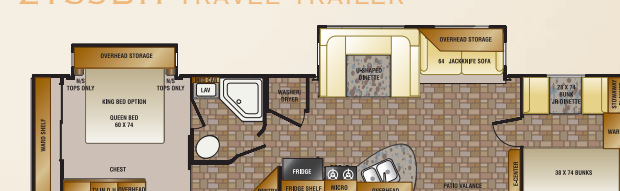
ZT33FK TRAVEL TRAILER



ZT39DB TRAVEL TRAILER



ZT39BH TRAVEL TRAILER



FIFTH WHEEL TANKS : Fresh Water: 54 gal. / Black Water: 40 gal. / Gray/Galley Water: 80 gal.- ZF25BH: 40 gal.

TRAVEL TRAILER TANKS : Fresh Water: 54 gal. / Black Water: 40 gal. / Gray/Galley Water: 40 gal.- ZT25SB, ZT33BH, ZT33FK, ZT39DB, ZT39BH: 80 gal.

ZINGER	ZF25BH	ZF29BH	ZF29RK	ZF30RL	ZF31BH	ZF32DB	ZT25RB	ZT25SB	ZT26BH	ZT26BL	ZT27RL	ZT28BH	ZT30KB	ZT30RK	ZT31SB	ZT32RE	ZT32QB	ZT33BH	ZT33FK	ZT39DB	ZT39BH
Dry Weight:	6306	7695	7552	7223	8356	7802	5837	5868	5944	5969	6453	6254	6714	6917	7558	7586	6661	8455	7900	8201	8541
GVWR:	11299	11560	11360	11659	11696	11868	7774	7667	7788	7742	7687	7850	9562	9244	9671	9370	9591	11162	11450	11353	11469
Carrying Capacity:	4803	3865	3808	4144	3340	4066	1663	1656	1940	1740	1227	1596	2964	2883	2290	2214	3089	2707	3260	3131	2891
Hitch Weight:	1206	1458	1420	1464	1536	1592	500	524	884	709	680	850	878	1000	1048	770	950	1002	1000	1172	1272
Axle Weight:	5100	6237	6132	5759	6820	6210	5337	5344	5060	5260	5773	5404	5836	5917	6510	6816	5711	7453	6900	7029	7269
Exterior Length:	27' 11"	31' 10"	31' 10"	10' 8"	34' 11"	34' 3"	29' 4"	28' 10"	29' 11"	29' 11"	31' 11"	31' 10"	33' 10"	33' 6"	35' 6"	33' 10"	33' 10"	36' 6"	36' 9"	41' 6"	41' 6"
Exterior Height (with A/C):	11' 8"	12' 3"	12' 3"	12' 3"	12' 3"	12' 3"	10' 8"	10' 8"	10' 8"	10' 8"	10' 8"	10' 8"	10' 10"	10' 10"	10' 10"	10' 8"	10' 8"	11' 9"	10' 8"	11' 7"	11' 7"
Tire Size:	225/75R15D	225/75R15D	225/75R15D	225/75R15D	225/75R15D	225/75R15D	205/75R15C	205/75R15C	205/75R15C	205/75R15C	205/75R15C	205/75R15C	205/75R15D	225/75R15D	225/75R15D	225/75R15D	225/75R15D	225/75R15D	225/75R15D	225/75R15D	225/75R15D

Zinger STANDARDS & OPTIONS

STANDARDS

LIVING ROOM

- Premium residential furniture
- Decorative glass in sofa slide-out cabinet doors
- Designer valances with hard lambrequin legs
- Wall paper border
- 7' Interior ceiling height
- 6' Ceilings in slide-out
- Decorative lights (varies by floor plan)
- Wood slide-out fascia
- Sleeper sofa
- AM/FM/CD/DVD stereo system
- Three décor choices
- Flush floor slide-out with large dinette window
- Generous storage

KITCHEN

- Super booth dinette (varies by floorplan)
- Range hood with light and exhaust fan
- High rise faucet
- Wall mounted systems monitor panel
- Ball bearings and drawer guides in drawers (rated for 60#s)
- Glazed cocoa cherry cabinet doors
- Cocoa cherry cabinet drawers
- Microwave oven
- Range with oven
- 6 cu. ft. Double door refrigerator

BEDROOM

- 60" x 74" mattress
- TV shelf and hook-up
- Coordinated window treatments
- Quilted reversible bedspread

BATHROOM

- Large parchment color lavatory bowl
- Spacious shower/tub & one-piece surround
- Foot flush white toilet
- Linen storage (varies by floor plan)

- Mirrored medicine cabinet
- Glass shower door & neo angle shower (varies by floor plan)
- Shower curtain with curved shower track (varies by floor plan)

EXTERIOR STANDARDS

- Infused champagne front & rear walls
- New rounded, aerodynamic front end
- 54 gal. fresh water tank
- Tinted safety glass windows
- Radial tires - nitro filled
- Easy open entry step
- Bumper with drain hose storage
- (2) Marine grade exterior speakers
- Molded rain gutters with 3" drip spouts
- 30" Radius entry door with screen door (main only)
- Totally enclosed underbelly
- Outside shower
- Skylight over tub

CONSTRUCTION STANDARDS

- One-piece rubber roof with 3" rolled roof wrap & 12 year manufacturer's warranty
- 3/8" walkable roof decking
- 16" OC truss rafters with 4 1/2" crown
- R-7 Rated fiberglass roof insulation
- Rain gutters along entire roof line
- 13,500 Ducted A/C
- 25,000 BTU floor ducted furnace (30,000 in 30KB, 30RK, 31SB, 32RE, 32QB, 33BH, 33FK, 39BH & 39DB travel trailers)
- 16" OC stud placement in sidewalls, endwalls and slide rooms
- 5/8" tongue & groove plywood floor decking
- R-7 Rated fiberglass sidewall insulation
- 16" OC 2 x 3 floor joists
- Steel I-beam frame (varies by model)
- R-7 Rated fiberglass floor insulation
- Maximum amount of linoleum throughout
- Moisture barrier wrapped floor
- 30" Radius entry door with screen
- Secure Stance axles

CONVENIENCE PACKAGE

- 3-Burner range with oven
- TV antenna
- Tub surround
- Smoke detector
- LP detector
- Diamond-plate stone guard
- 13,000 BTU A/C
- Awning
- Microwave
- Drawers under booth dinette
- Power vent in bath
- Swing-out assist rail
- 6 gallon gas/electric DSI water heater
- Night shades
- Stabilizer jacks (4 on TT's, 2 on FW's)
- Sink covers

OPTIONS

- LCD TV
- Chrome center caps
- 8 cu. ft. Refrigerator
- Bi-fold range cover
- 15,000 BTU A/C
- Electric Awning
- Fiberglass front cap
- Residential refrigerator (33FK)
- Sliding glass door (33FK)
- Rear ladder
- Carpet in bedroom
- Fiberglass exterior
- Upgraded insulation
- Aluminum rims
- Solid surface counter tops
- Tri-fold Hide-A-Bed sofa (IPO sleeper sofa)
- Bumper Mount Grill
- Spare Tire and Carrier
- Skylight in Kitchen/Living Room
- Free standing dinette with 4/chairs
- Denver Supreme Upgrade Mattress
- (2) swivel recliners IPO sofa (32RE only)



DO IT ALL WITH ZINGER!



Optional solid surface kitchen countertops with flush mount sink covers



Outdoor kitchen with optional exterior grill



Truffle decor



Onyx decor



Tinted safety glass windows



Swing out assist handle with 30° radius door



Secure stance axles with nitro filled tires