

# Sanibel

by PRIME TIME Mfg.



SANIBEL | FIFTH WHEELS  
WWW.PRIMETIMERV.COM

THE INTELLIGENT FIFTH WHEEL



2

# *Sanibel... The Intelligent Fifth Wheel!*

» **in-tel-li-gent**, adj. smart; clever; sensible or rational; showing or resulting from an ability to think and understand things clearly and logically.

**P** rime Time Manufacturing is proud to introduce Sanibel – a luxury fifth wheel built to stand unequivocally on its own with a level of intelligence that far exceeds the status quo. Our objective for Sanibel is simple: to outperform by every measure and to invoke an experience that anticipates and satisfies your every need with thoughtful and intelligent design. From its well designed, spacious interior, to its modern amenities and extra creature comforts, the Sanibel is your home away from home.

**W** ithin minutes of entering, Sanibel can transform you. The interior is crafted around comfort, sight, and convenience. Modern cabinetry, residential appointments, and rich textures create a sophisticated space of warmth and elegance. Fabrics are specially treated to provide the softest touch and breathability for comfort in heat or cold. Every element of Sanibel will create a personal connection with the user that focuses on enjoyment and satisfaction.



3

» Photos show the Sanibel 3500 in Toffee Décor.



### *The Intelligent Lighting Package*

When choosing lighting for Sanibel, we took the same uncompromising approach to intelligent design. For instance, the "Stay Cool" LED lights found at the critical seating areas offer both a stunning presence and smarter thinking. Along with lower energy consumption and longer life, the LEDs emit significantly less heat helping to maximize your comfort both day and night.



4



» (Left) The Sanibel 3501 features a 20 Cubic Foot residential refrigerator powered by a 800 watt inverter.

# The Intelligent Kitchen!

The Intelligent Kitchen is symbolic of the genius behind Sanibel's inspiration. Work spaces and storage areas have been carefully designed and positioned for instinctive reach and use. Premium components have been selected for long term durability. An advanced appliance package will indulge your residential desires while brilliant cabinet doors and drawers made from Native American Cherry Wood will welcome you with handsome looks. The Intelligent Kitchen, like each and every detail of the Sanibel, has been examined and questioned to ultimately provide a single result – the highest level of owner satisfaction.





» All bedrooms are NOT created equal. LED lights, "Quick Cool" ducted air conditioning, and extra storage details, make the Sanibel bedroom, shown in Toffee Décor, *Intelligent*.



5

## *The Intelligent Bedroom*

The expansive interior of the Sanibel was astutely designed to adapt its volume to your needs. A quick examination under the king size bed will expose a massive storage area that is up to 300% larger. Shoe storage in the wardrobe, six large vanity drawers, and multiple overhead cabinets are additional examples of intelligent space utilization. However, the creation of space was also a priority with Sanibel. That's why you will find extra "convenience inches" in the bed slide and large "hidden" drawers recessed into the front wall. Our designers even added radius corners to the Ever Pedic pillow top mattress to assist in traffic flow.





- » Sanibel's innovative "Quiet Cool" ducted return air conditioning system is truly an intelligent feature that will dramatically improve your comfort and convenience. Similar to what you would find in your home, Sanibel has designed return air ducts that pull air from both sides of your RV creating up to 25% more efficiency. Since the return air is no longer required on the bottom of the air conditioner, the unit can be fully sealed on the bottom, reducing condenser and blower noise by 75%.
- » Because your comfort is a priority, every Sanibel is standard with a 13,500 BTU air conditioner in the bedroom. Utilizing "Quiet Cool" technology, the air conditioner is connected to your main 15,000 BTU A/C to provide maximum cooling while maintaining an ultra-quiet sleeping environment. Dual temperature sensors provide maximum temperature control throughout your Sanibel.

- 6
- » Sanibel extends intelligent design to all parts of the fifth wheel including how the holding tanks are heated. Each tank is equipped with oversized ① 12 Volt heating pads for direct heat application. Every tank is then wrapped with ② Radiant Shield Technology (R-38) to help spread the heat over the tank surface while protecting it from cold exterior temperatures. This intelligent design ensures that ALL of your holding tanks are adequately protected while also ensuring that ALL of the heat from your furnace stays INSIDE your Sanibel to maximize your comfort. Unlike forced air applications, customers also appreciate that you can activate the heat pads during transit for additional protection.



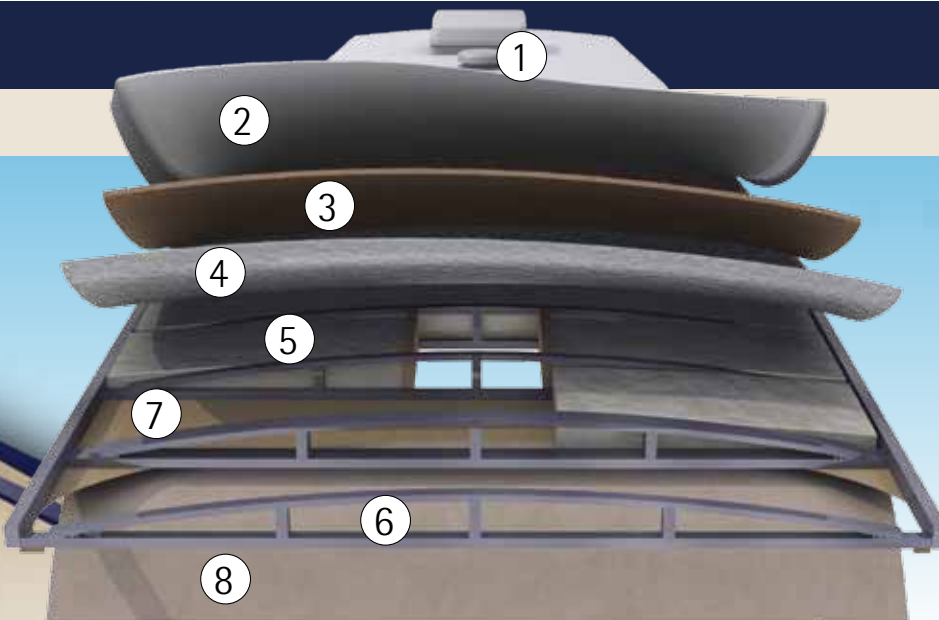
## Roof Construction (R-52)\*

- » 1. Dual Attic Vents
- » 2. Heavy Duty EPDM Rubber Roof with 12 Year Warranty
- » 3. Walk-on Roof with 3/8" Decking
- » 4. Radiant Shield Technology (R-38)
- » 5. Two Layers of Fiberglass Insulation (R-14)
- » 6. 5" Snow Load Approved Rafters on 16" Centers
- » 7. 1/8" Plywood
- » 8. Stain Resistant Vinyl Ceiling

\* R-Values Calculated at 80° Ambient Temperature



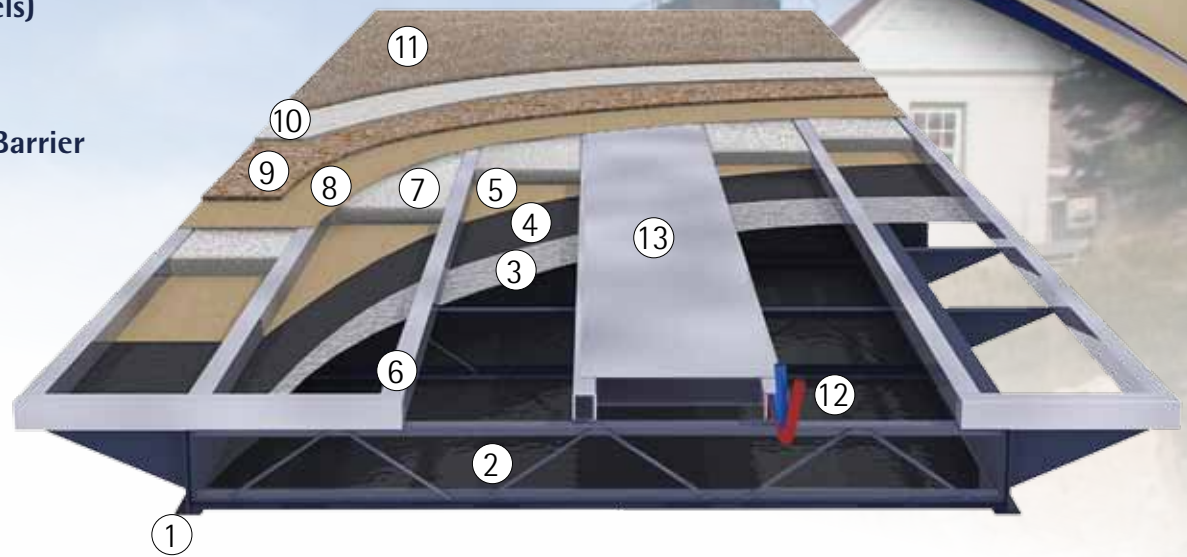
Attic Vent



## Floor Construction (R-52) \*

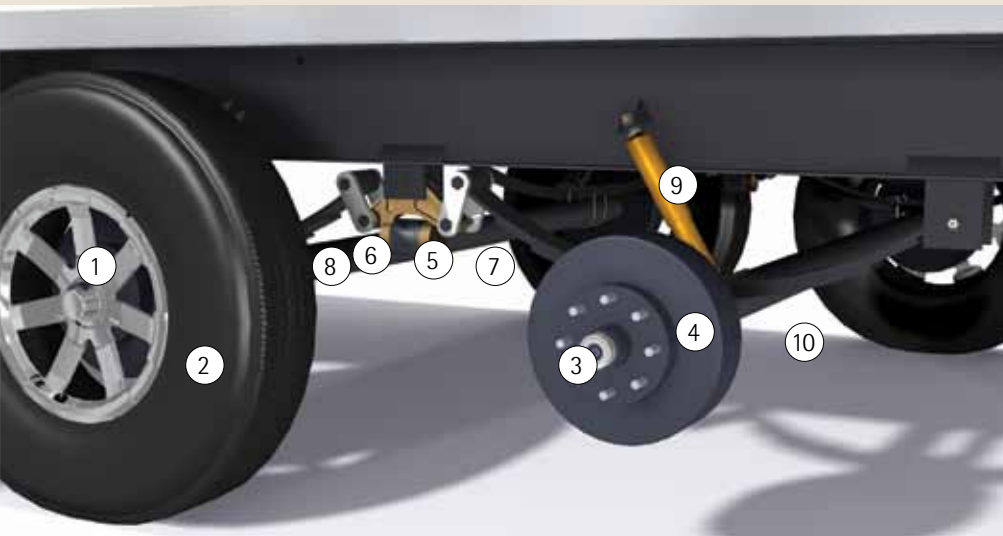
- » 1. 12" I Beam Powder Coated Frame (Most Models)
- » 2. Enclosed Underbelly
- » 3. Radiant Shield Technology (R-38)
- » 4. "Floor Brace" Structural Enhancement Vapor Barrier
- » 5. 1/8" Plywood
- » 6. 3" Heavy Gauge Aluminum Floor Joists
- » 7. 3" Hi-Density EPS Foam (R-14)
- » 8. 1/8" Plywood
- » 9. 5/8" One-Piece Floor Decking
- » 10. Residential Grade Carpet Pad
- » 11. Deep Pile Residential Grade Carpeting
- » 12. Enclosed and Heated Galley Water Lines
- » 13. In-Floor Straight Line Heat Ducting

\* R-Values calculated at 80° Ambient Temperature



*The Intelligent Suspension!*

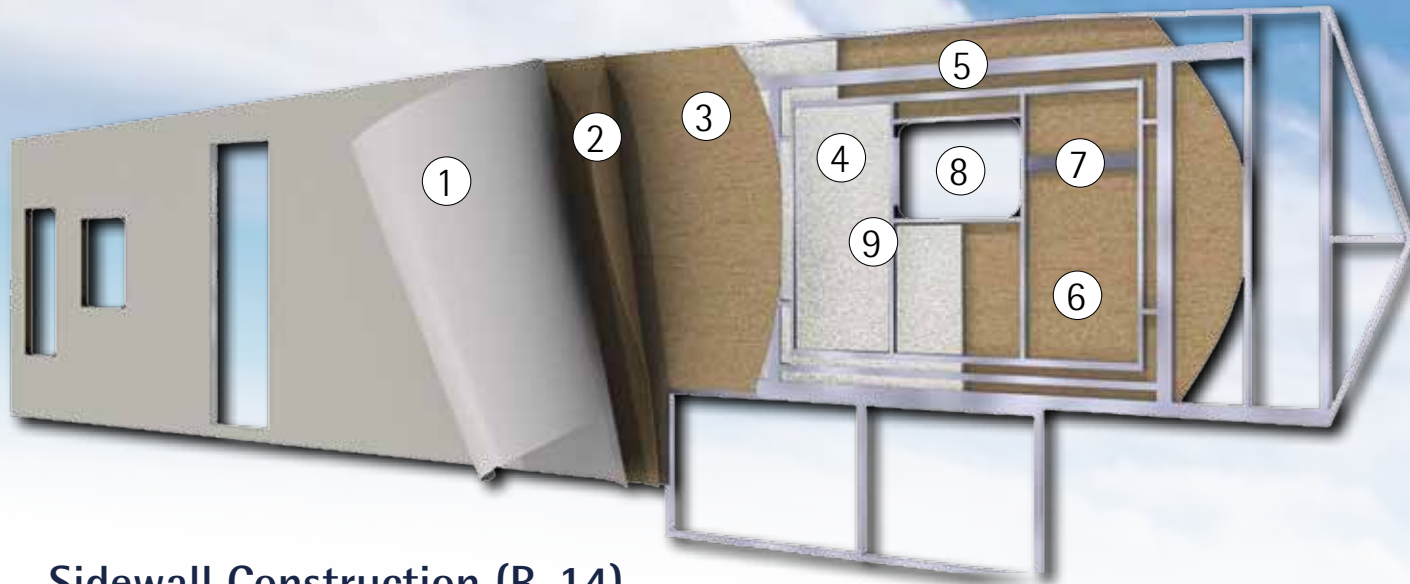
## Suspension



- » 1. 16" Aluminum Wheels
- » 2. Upgraded Radial Tires
- » 3. "E-Z LUBE" Axle Hubs
- » 4. Heavy Duty 8-Lug Hub Face
- » 5. "E-Z FLEX" Rubberized Suspension
- » 6. Eight Point "Wet" Bolt Assembly
- » 7. Heavy Duty Brass Bushing Assembly
- » 8. Heavy Duty 1/2" Shackle Plates
- » 9. Heavy Duty Gas Shocks (4)
- » 10. Heavy Duty 7,000 lb. Axles (Most Models)

**2 Year  
Warranty**  
DEXTER AXLE COMPANY





## Sidewall Construction (R-14)

- » 1. "Dura Gloss" Hi-Temp, Gel Coated Fiberglass
- » 2. First Layer of 1/8" Plywood
- » 3. Second Layer of 1/8" Plywood
- » 4. Hi Density EPS Foam
- » 5. Heavy Gauge Aluminum Framing
- » 6. Interior Layer of 1/8" Plywood Decor Board
- » 7. Strategically Placed Sheet Metal Backing Strips
- » 8. Aluminum Framed Window, Door, and Baggage Cut-Outs
- » 9. Radius Corner Blocks



## Over the Road Intelligence

When you take to the highway in Sanibel, your safety is a priority. Name brand radial tires offering high load capacities are mounted on your Sanibel with automotive style 8-lug wheel hubs. Inside the E-Z Lube hubs, you will find extra large brakes to maximize your ability to stop. Since you NEVER want to be broken down on the side of the road, your peace of mind is assured with a long list of "Best In Class" suspension features that offer heavy-duty dependability that will, in turn, provide years of reliable, stress-free towing.

Using a "no compromises" attitude, Sanibel's Super Turn front cap features a combination of industry-leading turning radius and advanced aerodynamics not normally found on high-profile luxury fifth wheels. Whether you are backing into tight campsites or maneuvering the city streets, Super Turn's uniquely engineered design will provide for an amazing 88 DEGREE TURNING RADIUS even on a short-bed, extended cab truck. You will also find that the Super Turn front cap has a soft, multi-contoured design that will cut through the wind to further enhance your towing experience while also improving your fuel economy.





# Sanibel

THE INTELLIGENT FIFTH WHEEL

by PRIME TIME Mfg.

## ZERO DEGREE APPROVED

- » Tested at -13 Degrees
- » Heated, Enclosed Water Lines
- » Enclosed Underbelly
- » Heated Holding Tanks
- » 12 Volt Holding Tank Heat Pads
- » Radiant Shield Technology Wrapped Holding Tanks (R-38)
- » Double Layer of Fiberglass Insulation In Roof (R-14)
- » Radiant Shield Technology In Roof (R-38)
- » Digital Thermostat
- » 3" Hi-Density EPS Foam in Main Floor (R-14)
- » Radiant Shield Technology Under Main Floor (R-38)
- » Double Layer of Fiberglass Insulation In End Walls (R-14)
- » Radiant Shield Technology In End Walls (R-38)
- » Insulated Slide Room Floors (R-38)
- » Insulated Bath and Bed Deck Floors (R-38)
- » Heated Pass Thru Storage
- » Heated Universal Docking Center
- » Dual Attic Vents

R-Values calculated at 80° Ambient Temperature

-13° OUTSIDE

72° INSIDE

### *The Intelligent Thermal Package!*

With an impressive list of construction innovations, Sanibel is creating a new standard for four season living. To prove the worthiness of Sanibel's intelligent design, we partnered with a world leader in heating and cooling technology – Dometic Corporation – and subjected a Sanibel to rigid testing in their famous extreme temperature test chamber. During the test, with temperatures below zero degrees, every room inside the Sanibel remained warm and comfortable.

Of course, inside temperatures are only part of the story. With our Intelligent Thermal Package, all the holding tanks and dump valves remained completely operational and the enclosed and heated galley water lines remained completely functional.

Not everyone needs this kind of protection, but when four season comfort becomes important, make an intelligent choice – ask for a Sanibel.



COMFORT  
INDOORS

# Intelligent Features

**2 YEAR  
WARRANTY**

Forest River's Optional 2 Year  
Warranty Included At No Charge!



Double Volume Pantry



Four Season Comfort Starts With  
A 40,000 BTU Furnace



The Pass-Thru Storage Is Extra  
Large and Heated



Exterior Entertainment Center  
*(TV not included)*



Hydraulic Front Landing Gear  
Are Fast And Powerful



One Touch Electric  
Stabilizer Jacks



A 30" Residential OTR Microwave  
Expands Your Cooking Options



The Universal Docking Center  
Offers Amazing Convenience



A 90 AMP (12V) Converter Will  
Keep Your Sanibel Powered

## STANDARDS & OPTIONS

### CONSTRUCTION

#### ETERNABOND Construction

- \* 2" Laminated Aluminum Framed Sidewalls
- \* 3" Laminated Aluminum Framed Main Floor
- \* 5/8" One-Piece Floor Decking
- \* Laminated Aluminum Framed Slide Room Walls And Roofs
- \* Welded Construction
- \* 100% Glue Coverage On All Laminated Parts
- \* EGS Backers In Walls And Floors

#### The Intelligent Thermal Package

- \* Tested At Zero Degrees
- \* Heated, Enclosed Water Lines
- \* Enclosed Underbelly
- \* Heated Holding Tanks
- \* 12 Volt Holding Tank Heat Pads
- \* Radiant Shield Technology Wrapped Holding Tanks (R-38)\*
- \* Double Layer Of Fiberglass Insulation In Roof (R-14)
- \* Radiant Shield Technology In Roof (R-38)\*
- \* 3" Hi-Density EPS Foam in Main Floor (R-14)
- \* Radiant Shield Technology Under Main Floor (R-38)\*
- \* Double Layer Of Fiberglass Insulation In End Walls (R-14)
- \* Radiant Shield Technology In End Walls (R-38)\*
- \* Insulated Slide Room Floors (R-38)\*
- \* Insulated Bath And Bed Deck Floors (R-38)\*
- \* Heated Pass Thru Storage
- \* Heated Universal Docking Center
- \* "DURA GLOSS" Hi-Temp Fiberglass Sidewalls
- 5" Truss Rafters, 16" On Center
- 3/8" Walk-On Roof Decking
- One-Piece Rubber Roof With 12 Year Warranty
- Powder Coated I-Beam Frames
- Drop Frame Storage

\* R-Values calculated at 80° Ambient Temperature

# STANDARDS & OPTIONS

Oversized Pass Thru Storage  
With Intelligent Design  
Pass Thru Luggage Tie Downs  
"SUPER TURN" Aerodynamic Fiberglass Front Cap  
Automotive Styled Fiberglass Rear Cap  
Upgraded Oetiker Clamp Ring Water Line Fittings

## UTILITIES

Electric Rear Jacks  
Hydraulic Front Landing Gear  
"SOLID STANCE" Front Jack Legs  
"SOLID STANCE" Oversized Landing Pads  
Convenient Hydraulic Selector Valves  
15,000 BTU Premium Air Conditioner  
"Quiet Cool" Vented Return Air Ducting System  
2nd A/C In Bedroom - "Quiet Cool" With  
Dual Zone Temperature Sensors  
40,000 BTU Furnace  
Digital Thermostat  
12 Gallon Quick Recovery Water Heater  
Direct Spark Ignition On Water Heater  
Water Heater By-Pass  
Hi-Capacity Water Pump  
50 AMP (110V) Power  
Detachable Power Cord  
90 AMP (12V) Converter  
Washer/Dryer Prep  
Dual 30# LP Bottles  
CO Detector  
LP Detector  
Smoke Detector  
Fire Extinguisher  
Fresh Water Capacity - 64 Gallons  
Black Water Capacity - 50 Gallons  
Gray Water Capacity - 90 Gallons

## EXTERIOR STANDARDS

### The Intelligent Suspension

- \* "E-Z FLEX" Rubberized Suspension
- \* Heavy Duty Shock Absorbers
- \* 16" Aluminum Wheels
- \* 8 Lug Wheels
- \* Upgraded Radial Tires
- \* Eight Point Greasable "Wet" Bolts
- \* Long Lasting Brass Bushings
- \* Long Lasting 1/2" Shackle Plates
- \* 7,000 Pound Axles (Most Models)
- \* "E-Z LUBE" Greasable Axle Hubs

### Exterior Entertainment Center That Includes:

- \* Swing Arm TV Bracket
- \* Exterior AM/FM/CD Stereo w/Speakers
- \* Coax TV Connection
- \* 110 V Electrical Outlet

### Universal Docking Center That Includes:

- \* Intelligent System Switch Panel
- \* Outside Shower w/15' Flex Hose
- \* Black Tank Flush
- \* EZ Winterization Valve And Connection
- \* Easy Access Low Point Drains
- \* Low Point Drain Shut-Offs
- \* City Water Connection
- \* Battery Disconnect
- \* Power Fresh Water Tank Fill

- \* Separate Cable and Satellite Connection
- \* Holding Tank Gate Valve Pull Handles
- \* Light
- \* Ducted Heat
- \* No Mess Drain Tube
- Electric Awning With Adjustable Arms  
Slam Latch Baggage Doors With  
"Dura Gloss" Finish  
Magnetic Baggage Door Catches  
30" Wide Radius Entrance Door  
Swing-Out Grab Handle  
Hitch Cover  
Undermount Spare Tire  
Digital Ready TV Antenna With Booster  
Dual Vented Attic  
Rear Back-Up Lights  
Rear Ladder  
2 Scare Lights  
DOT Approved Deep Tint Safety Glass  
Easy Access Fresh Water Drain Valve  
Extra Large PVC Sewer Hose Storage  
Extended Drip Spouts

## INTERIOR STANDARDS

Native American Glazed Cherry  
Hardwood Cabinet Doors  
Native American Glazed Cherry  
Hardwood Drawers  
Baltic Birch Residential Drawer Boxes

### The Intelligent Kitchen

- \* 12' SBS Refrigerator
- \* 20" Residential Refrigerator (3501 Only)
- \* 30" OTR Microwave
- \* Deluxe Range With Heavy Grates
- \* LG Solid Surface Kitchen Countertop
- \* LG Solid Surface Flush-Mount Sink Covers
- \* High Arch Kitchen Faucet With Sprayer
- \* Stainless Steel Kitchen Sink  
With Extra Deep Bowls
- \* 13 Gallon Trash Can
- \* Pots-N-Pans Drawer
- \* Full Extension Drawer Guides
- \* Armstrong® "Tough Guard" Linoleum  
w/5 Year Wear Warranty
- \* Large Easy-To-Pull Cabinet Pull Handles
- 32" LCD TV
- 42" LCD TV (Some Models)
- Lane® Furniture Residential Hide-A-Bed
- Lane® Furniture Residential  
Recliners (Where Applicable)
- Residential DVD Player With 5.1 Speakers
- Day/Night Shades In Living Area
- Dinette With Leaf And Storage Drawer
- (4) Dinette Chairs With Hidden Storage
- "Atrium" Dinette Windows
- Decorative "Space Saving" Atrium  
Window Moldings
- Laptop/Cell Phone Charging Station At Dinette

### The Intelligent Lighting Package

- \* "Stay Cool" Adjustable LED  
Reading Lights Above Sofa
- \* "Stay Cool" Adjustable LED

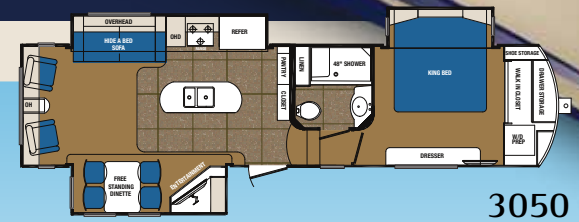
- Reading Lights Above Recliners
- \* "Stay Cool" Adjustable LED  
Reading Lights Above Bed
- \* "Stay Cool" LED Ceiling Light Above Sofa
- \* "Stay Cool" LED Vanity Light In Bath
- \* Flush Mount LED Ceiling Lights With  
High Dispersion Lenses
- \* Easy-To-Reach Welcome Home Lighting
- \* Safety Step Lights With Illuminated Switch
- Deluxe Power Vent Fan With Remote Lid  
End Table On RL Models  
Wood Assist Handle At Main Entrance  
36" King Size Shower With Built-In Seat  
Adjustable Shower Faucet  
Deluxe "Skyview" Skylight With 6'8" Of  
Headroom  
"STOR MOR" Shower Caddy  
Dual Lever Bath Faucet  
Linen Cabinet  
12V Power Vent Fan In Bath  
Hi-Rise Porcelain Toilet  
Heated Bathroom

## THE INTELLIGENT BEDROOM

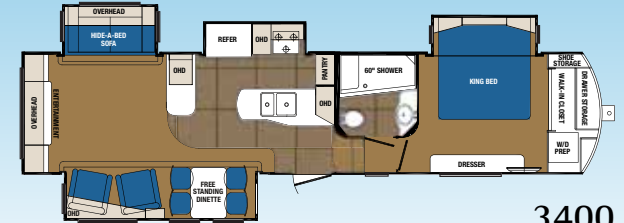
- \* 30" Deep Bedroom Slide Room (N/A 3600)
- \* Massive Under-bed Storage
- \* Walk In Closet with Easy Access Light Switch
- \* Shoe Storage In Closet
- \* Extra Wide Vanity With  
Six Large Storage Drawers
- \* Four Hidden Drawers In Front Cap
- Large LCD Bedroom TV  
King Size "Ever Pedic" Luxury  
Foam Pillowtop Mattress  
Radius Corner Mattress For Increased Mobility  
Decorative Bedroom Pillows  
Stackable Washer/Dryer Prep  
Solid Cherry Sliding Wardrobe Doors  
Easy-To-Use Wardrobe Door  
Travel Locks  
Glass Bedroom Entrance Door  
Cell Phone Charging Station

## OPTIONS

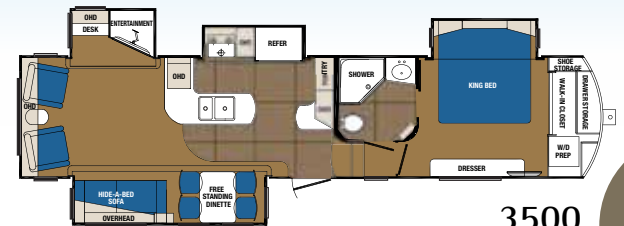
- Trail Air Pin Box
- Dual Pane Windows
- Slide Out Awnings
- Full Body Paint
- Fireplace
- Generator Prep
- Generator Install - Onan 5.5KW
- Central Vacuum With 30' Hose
- "LEVEL UP" 6 Point Auto Leveling System



3050



3400

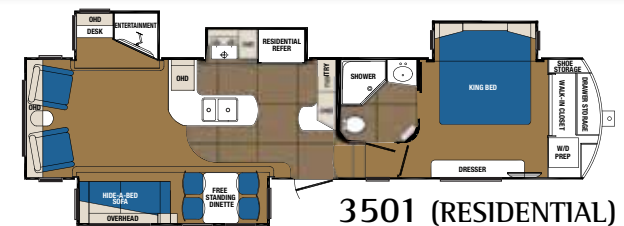


3500

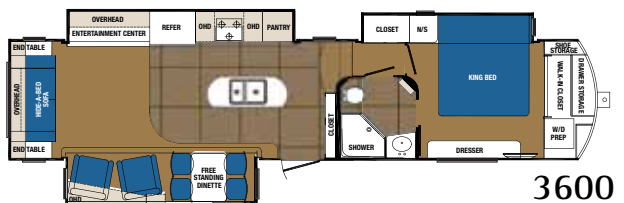
11

## SPECIFICATIONS

	3050	3400	3500	3501	3600
Ship Weight	TBD	12,695	12,505	12,505	12,640
Carrying Capacity	TBD	2,746	2,936	2,936	2,801
Hitch Weight	TBD	2,264	2,255	2,255	2,335
Length	TBD	39' 0"	39' 0"	39' 0"	39' 5"
Height	13' 1"	13' 1"	13' 1"	13' 1"	13' 1"



3501 (RESIDENTIAL)



3600

# DSI QUALITY CIRCLE AWARD WINNER - 2010, 2011, 2012

Prime Time Manufacturing is proud to be recognized as an industry leader in value, reliability, and overall quality by the Recreational Vehicle Dealers Association. This was accomplished by committing ourselves to "A Higher Standard" in design, construction, testing, and customer service. Check us out - we know you'll be impressed!



Seal Tech Air Pressure Test



ETERNABOND Construction



Rain Bay



Seek-A-Leak Pressure Test



65 Point Secondary PDI



Web Based Customer Service



Executive Quality Audits



Advanced Engineering



www.primetimerv.com



## 24/7 EMERGENCY ROADSIDE ASSISTANCE

For a worry-free ownership experience Forest River includes one year of Coach-Net RV Technical & Roadside Assistance with each RV purchase. Whether new to the RV lifestyle or an experienced RV enthusiast, Forest River owners have 24/7 access to technical, operational and emergency road service coverage throughout the US & Canada. Coach-Net's fast, dependable service is just a phone call away.



## HERE'S JUST A SAMPLE OF THE BENEFITS\*

- ✓ Mobile Mechanic
- ✓ Free Jump Starts
- ✓ Tire Changes
- ✓ \$2000 Trip Interruption
- ✓ Appointment Assistance
- ✓ Lock Out Service
- ✓ Fuel Delivery
- ✓ Service Assistance
- ✓ Custom Trip Routing and Maps
- ✓ 24 Hour Emergency Messaging

\*Exclusions and restrictions apply. See member guide for details.



Forest River, Inc. encourages our customers to purchase their Forest River products from a local dealership whenever possible for the following reasons:

- 1) Forest River, Inc. dealers are independently owned and operated businesses so priority service and scheduling is at their discretion and is often provided to customers that purchased their unit at that dealership.
- 2) Purchasing locally allows customers to establish meaningful relationships with a dealer, enhancing the RV experience through assistance with product questions, user tips or RV regulations for your state or country, and much more!
- 3) Canadian customers must meet requirements to bring an RV purchased out of the country to their home. These requirements may involve additional inspections and certifications, taxes and fees. Your local Canadian Dealer is a professional at meeting these requirements.
- 4) Scheduling timely warranty repairs and adjustments through a local dealership provides far greater flexibility and convenience to you, the customer!

It is the goal of Forest River, Inc. that all of our RV owners fully enjoy the RV experience and that customer satisfaction meets or exceeds their expectations!

All illustrations and specifications contained in this literature are based on the latest product information at time of publication. Prime Time Manufacturing reserves the right to make changes in prices, colors, materials, equipment and specifications at anytime, without notice, and assumes no responsibility for any error in this literature. All units are shipped F.O.B. point of manufacture.

F-66-367 © 2013  
Forest River Litho U.S.A.



**Learn More**  
Scan this barcode using a QR Reader on your smart phone to learn more about Forest River.



DEALER