

Infinity
by Dutchmen

Infinity

by Dutchmen



THE ULTIMATE FIFTH WHEEL



3860MS, shown in Onyx Decor

Infinity

Boundless. Limitless. Immeasurable. Those adjectives perfectly describe the comfort and beauty of Infinity luxury fifth wheels. You'll appreciate our use of real cherry cabinetry, wood blinds, LED lighting, Lane residential furniture in most models, and a 1000-Watt surround-sound media center.



3870FK, shown in Sahara Decor



3870FK, shown in Sahara Decor



3870FK, shown in Sahara Decor





3860MS, shown in Onyx Decor



3860MS



3860MS, shown in Onyx Decor



Model 3860MS Kitchen

Infinity floorplans offer something for everyone. Gourmet kitchens include a 12 cubic foot refrigerator, stainless steel oven, cooktop and microwave, solid cherry cabinetry and flush-mount Corian® countertops with sink and stove covers. You'll appreciate the spacious living quarters, master bedrooms and bath areas with roomy showers, and in the case of the 3860MS, a bathroom slide!

interior amenities



GENUINE CORIAN® COUNTERTOPS WITH FLUSH MOUNT STOVE AND SINK COVERS

- Durable finish for years of use.
- Non-porous surface, easy to clean.
- 100% color throughout countertop – easily repairable.
- Stainless steel under-mount sink.
- Boutique pullout brushed nickel faucet.

FULL EXTENSION STAINLESS STEEL BALL BEARING DRAWER GLIDES



- 75 Pound Capacity
- 100% Hardwood Drawer Construction - with Laminated Drawer Sides
- Heavy Duty Drawer Glides
- Full Extension Glides Allow Drawers to Expand Past Cabinet Face for Full Access to Drawer



“CEDAR SUITE” WALK IN CLOSET

The **CEDAR SUITE WALK IN CLOSET** utilizes the entire depth of the front cap to create the largest storage closet in the industry.

Features:

- Cedar-lined wall
- Shoe racks
- Generous hanging space
- Ceiling light
- Mirrored sliding doors
- Shirt closets & drawers
- Washer/Dryer prep will accommodate stacking washer/dryer



HAND RUBBED ANTIQUE GLAZED CHERRY CABINETRY



100% Cherry hardwood cabinet construction, including doors and drawer faces, cabinet stiles (slot screwed and glued), interior passage doors, bedroom headboard, slide fascias, and fireplace treatments.



SOLID CHERRY HARDWOOD CABINET CONSTRUCTION

- Face Frames are Tub Drilled and Screwed for Strength



HIDDEN HINGES

- Elegant, European Style Spring Loaded Hardware
- Keeps Doors Closed Tightly
- Fully Adjustable





3860MS, shown in Onyx Décor

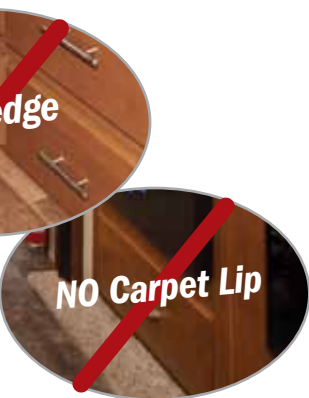
Infinity's fifth wheel bedroom includes two industry firsts; an innovative, laminated crowned ceiling and a full walk-in cedar suite closet. The arched ceiling provides more headroom; a full 6 feet 8 inches. Increased headroom in the bedroom allows our slide rooms to be taller, as well.

Infinity's stylish headboard adds a touch of elegance. The king-sized memory foam mattress and standard deluxe pillow package will help you sleep soundly, and you'll appreciate the relaxing chair and ottoman in the 3860MS.



"COMFORT ZONE" KING SIZE MEMORY FOAM MATTRESS

(Queen Mattress on
3250 Model)



SPACIOUS CLOSETS



CENTRAL COMMAND CENTER

Our central command center groups together all of your essential interior and exterior light switches, tank monitors, awning controls and water heater switch.



WASHER DRYER PREP

Washer dryer prep is a standard feature on Infinity fifth wheels.



1000 WATT SAMSUNG "ALL-IN-ONE" ENTERTAINMENT SYSTEM

- 46", 40" or 32" HD LCD TV
- 5.1 Digital Surround Sound System
- AM/FM/CD/DVD with iPod Input
- 6 Interior Plus 2 Exterior Speakers
- TV Sound Plays Through Surround Sound System
- Universal Remote Controls TV & Stereo System

glacial package



HIGH INSULATION VALUES

R-VALUES

- R-40 in Roof, Floor and Behind Front Cap
- R-24 in Slide Room Floors
- R-9 in Walls

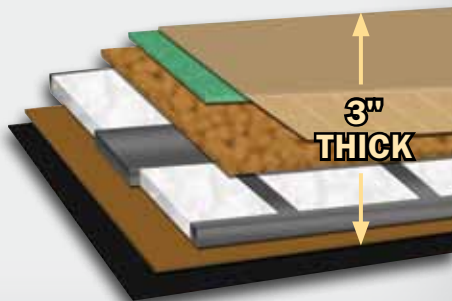
HEATED AND ENCLOSED UNDERBELLY



- Flex Foil Insulation in Underbelly, Roof & Slide Room Floors
- Heated, Insulated & Enclosed Tanks
- Heated & Insulated Knife Valves
- 40,000 BTU Furnace with Forced Air Heat

PREMIUM 3" THICK LAMINATED FLOOR

- Vacu-Bond Laminated Construction
- Heavy Duty Foam Insulation
- Welded Aluminum Framing
- 5/8" Thick Decking



QUIET ZONE 15,000 BTU "OVAL AIR" AIR CONDITIONING



- Dual Zone A/C System
- Recirculating Ductwork
- Cools Rooms Evenly
- Programmable Digital Display
- Bedroom Thermostat
- 26% More Air Flow
- Decreased Vibration
- Powerful 3 Speed Blower



grand canyon package



1" Thick Insulated Baggage Doors with Metal Slam Latch Hardware

Infinity's Grand Canyon Package features:

- Cavernous Exterior Pass Through Storage
- 10" Heavy Duty Stacked Z Rail Chassis
- Industrial Non Skid Rubber Flooring
- Lined Storage Walls & Bath Deck
- TV Prep with Cable Jack and 110V Outlet
- Oversized 76" X 30" Entry Door with "Welcome Back" Light
- Large Power Awning with Remote Control

TRAIL-AIR EQUA-FLEX SUSPENSION WITH QUAD SHOCK ABSORBERS



Trail-Air Equa-Flex rubber equalizer suspension system is standard on Infinity fifth wheels. The system protects your investment by allowing axles to travel independently to reduce road vibrations and create a smoother ride.

CONVENIENCE DOCKING STATION



- Fresh and City Water Fills
- Black Tank Flush
- By-Pass Valves
- 110V Outlet, Light, Cable and Satellite TV Hookups
- Quick Connect Hose with Sprayer

HYDRAULIC FRONT LANDING GEAR



- Nearly 15 Times Faster than Electric Jacks
- Double the Lifting Capacity over Electric Jacks
- Includes a Deep Cycle Battery

WALL CONSTRUCTION

- 1 Gel-Coated Filon Fiberglass Exterior
- 2 1/8" Wood Backer Board
- 3 2" Welded Aluminum Studs
- 4 High Density Block Foam Insulation
- 5 Galvanized Steel Backer Strips
- 6 Decorative Wall Vinyl
- 7 Upgraded Metal Slam Latch Insulated Baggage Doors
- 8 Oversized Folding Entry Assist Handle
- 9 80% Dark Tinted Safety Glass Windows
- 10 Deluxe Entry Door with "Welcome Back" Light
- 11 Power Patio Awning
- 12 Extra Large Security Light
- 13 Radius Aluminum Skirt to Frame

SLIDE ROOM CONSTRUCTION

- 1 Laminated Slide Room Construction
- 2 Triple-Seal Slide System
- 3 "Hydra Glide" Hydraulic Slide Mechanism
- 4 Auxiliary Hydraulic Slide Selector Valves

FRONT CAP

- 1 Custom Designed Fiberglass Front Cap with Gel Coat Finish
- 2 Front Cap Designed for Short Bed Trucks with Enhanced Turning Radius
- 3 "Eye Site" Hitch Assist Mirror
- 4 Dual LED Hitch Lights

REAR CAP

- 1 Custom Fiberglass Rear Cap with Gel Coat Finish
- 2 Laminated Aluminum Framed Rear Wall
- 3 Rear Roof Access Ladder
- 4 50 Amp Detachable Power Cord

FLOOR CONSTRUCTION

- 1 Residential Carpet
- 2 Residential Carpet Pad
- 3 Premium Beauflor® Vinyl Flooring
- 4 5/8" One Piece Seamless Floor Decking
- 5 3" Welded Aluminum Floor Structure
- 6 High Density Block Foam Insulation
- 7 Aluminum Heat Ducting
- 8 1/8" Backer Board Below Floor
- 9 All Weather Vapor Barrier
- 10 Rubber Diamond Plate Flooring

ENCLOSED AND HEATED UNDERBELLY

- 1 Polypropylene One Piece Underbelly
- 2 Reflectix Insulation Wrapped in Underbelly
- 3 PEX Water Lines - Enclosed and Insulated
- 4 Direct Heating to Underbelly from Furnace

ROOF CONSTRUCTION

- 1 One-Piece EPDM Rubber Roof - 12 Year Mfg. Warranty
- 2 3/8" Roof Decking
- 3 Reflectix Insulation

- 4 Welded Aluminum 5" Truss Roof Studs - 16" on center
- 5 Dual Layer of Fiberglass Insulation
- 6 Decorator Ceiling Vinyl
- 7 15,000 BTU Roof Ducted A/C
- 8 "Oval-Air" Aluminum Wrapped A/C Ducting System
- 9 Radius Roof Transition Molding
- 10 Roof Attic Vents

CHASSIS & SUSPENSION

- 1 Heavy Duty Drop Frame I-Beam Chassis
- 2 Maxx Garage Pass Thru Storage
- 3 Power Rear Stabilizer Jacks
- 4 Hydraulic Front Jacks with Adjustable Snap Jack Pins
- 5 Dual 30 Lbs. L.P. Bottles
- 6 Trail Air® Equa Flex Suspension System with Easy Lube Axles and Quad Shock Absorbers
- 7 8-Lug 16" Aluminum Wheels with Radial Tires
- 8 7,000 Lb. Axles
- 9 Extended Hitch King Pin

LAMINATED FLOOR, SIDEWALLS, SLIDE ROOM END WALLS AND BEDROOM CEILING



optional features

APPLIANCE OPTIONS

Fireplace w/Integrated Heater (Forced Charge 3470, STD N/C 3750, 3855 & 3870)
 Fireplace w/Integrated Heater-Bedroom (3750, 3800, 3855, 3860 & 3870 only)
 Central Vacuum w/Toe Kick Dust Pan
 Residential Convection Microwave Oven
 12-CU-FT 4-Door Refrigerator (N/A 3250, STD 3750, 3855 & 3870)
 Ultra Heat 12-V Tank Pads
 24" Bedroom TV
 Residential Living Package* (3750, 3855 & 3875 STD N/C)
 Generator Prep
 LP Generator - Onan 5.5 KW Marquis Gold

CLIMATE CONTROL OPTIONS

Heat Pump w/15,000 BTU A/C
 Dual Pane Safety Glass Windows
 Maxx Upper Deck Lounge Fan w/Rain Sensor (3855 only)
 Maxx Bathroom Fan w/Rain Sensor (Forced-Charge 3750, 3800, 3855 & 3870)
 Maxx Upper Deck Bathroom Fan w/Rain Sensor (3800 only)
 Maxx Bedroom Fan w/Rain Sensor (N/A 3750, 3800, 3855 & 3870 or w/Dual A/C)
 Dual A/C Package

FURNITURE OPTIONS

Step Ladder Desk Chair (3400, 3640, 3750, 3855, & 3870 only)
 2 Folding Dinette Chairs
 2 Bar Stools (3470, 3800, & 3860 only)

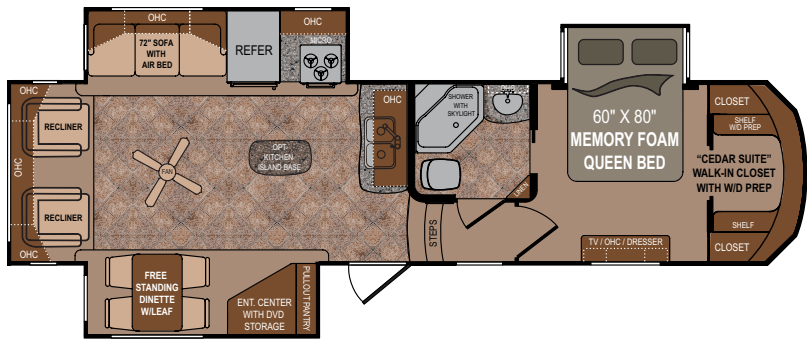
Roll-Away Kitchen Island (3250 & 3870 only)
 Dual Straight Sofas w/Recliner (3750 only)
 Theater Seating IPO Recliner/Gliders (N/A 3750, 3870 & 3855)
 Ottoman w/Storage
 Queen Bed w/Nightstands (N/A 3250)

EXTERIOR OPTIONS

Marine-Grade Gelcoat Fiberglass Exterior (Must Select Full Body Paint)
 Full Body Paint (Must Select Marine-Grade Gelcoat)
 Slideout Awning Topper - Triple Slides
 Slideout Awning Topper - Quad Slides (3400, 3470, 3640, 3800 & 3860 Only)
 Slideout Awning Topper - Five Slides (3750, 3855 & 3870 Only)

TrailAir - Tri-Glide Pin Box (N/A Color Match Hitch Cover)
 Color Matched Hitch Cover (N/A TrailAir-Tri Glide Pin Box)
 Level Up 6-Point Automatic Leveling System
 Good Year Load Range-G Tires
 Exterior Entertainment Center (3750, 3800, 3855 & 3860 Only)

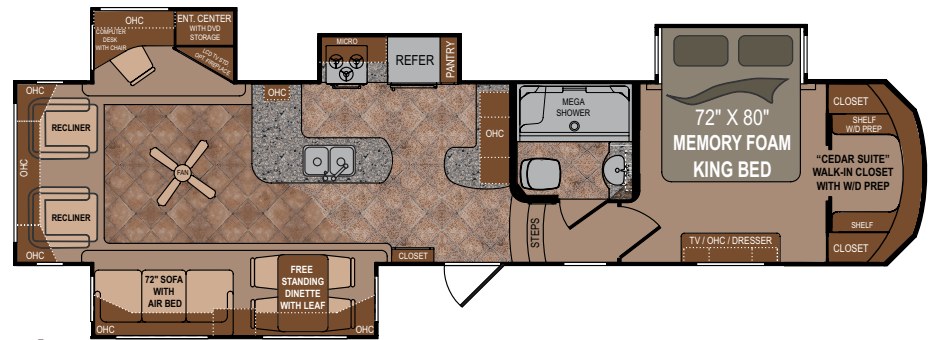
*Residential Living Package - Standard 3750FL, 3855FL & 3870FK Only
 Fireplace w/Integrated Heater, 12 CU FT 4-Door Refrigerator, Yacht Ceiling Trim



3250RL

Unloaded Weight (lbs) 10,941
 Hitch Weight (lbs) 2,474
 Cargo Capacity (lbs) 4,559
 Overall Height w/AC 12' 11"
 Overall Length 35' 8"

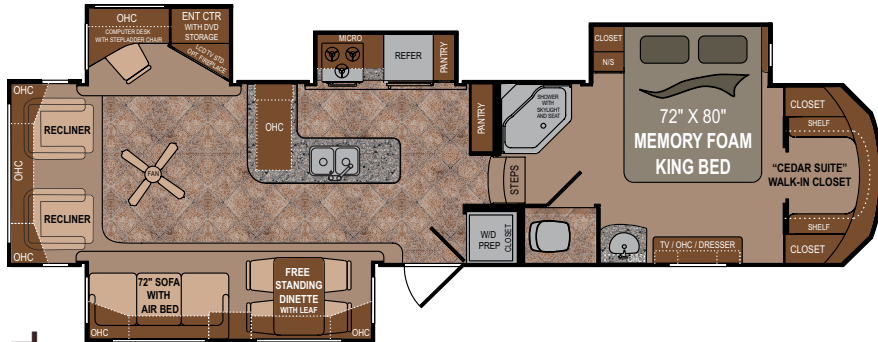
Fresh Water Tank(s) 69
 Black Water Tank(s) 48
 Grey Water Tank(s) 96
 Furnace BTU Output 40,000



3640RL

Unloaded Weight (lbs) 12,345
 Hitch Weight (lbs) 2,216
 Cargo Capacity (lbs) 3,155
 Overall Height w/AC 12' 11"
 Overall Length 40' 1"

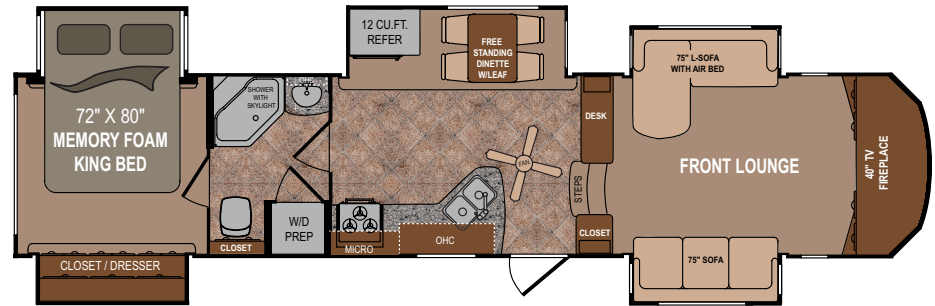
Fresh Water Tank(s) 69
 Black Water Tank(s) 48
 Grey Water Tank(s) 96
 Furnace BTU Output 40,000



3400RL

Unloaded Weight (lbs) 11,992
 Hitch Weight (lbs) 2,497
 Cargo Capacity (lbs) 3,508
 Overall Height w/AC 12' 11"
 Overall Length 38' 1"

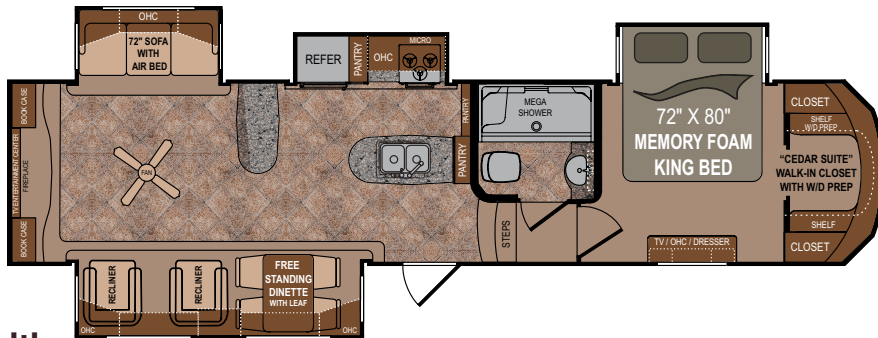
Fresh Water Tank(s) 69
 Black Water Tank(s) 48
 Grey Water Tank(s) 96
 Furnace BTU Output 40,000



3750FL

Unloaded Weight (lbs) 12,143
 Hitch Weight (lbs) 2,423
 Cargo Capacity (lbs) 3,357
 Overall Height w/AC 12' 11"
 Overall Length 40' 2"

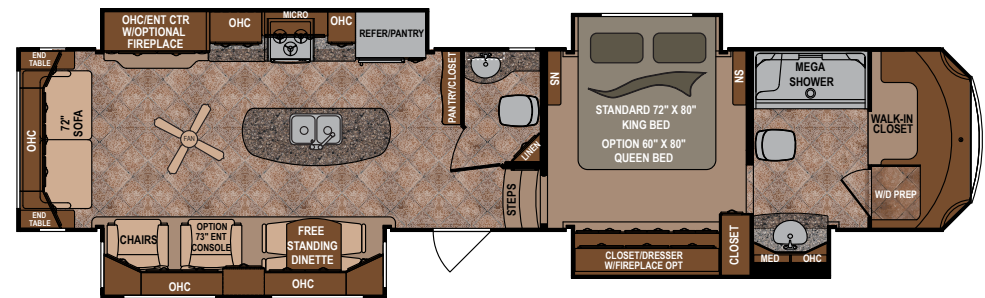
Fresh Water Tank(s) 69
 Black Water Tank(s) 48
 Grey Water Tank(s) 96
 Furnace BTU Output 40,000



3470RE

Unloaded Weight (lbs) 12,221
 Hitch Weight (lbs) 2,546
 Cargo Capacity (lbs) 3,279
 Overall Height w/AC 12' 11"
 Overall Length 38' 3"

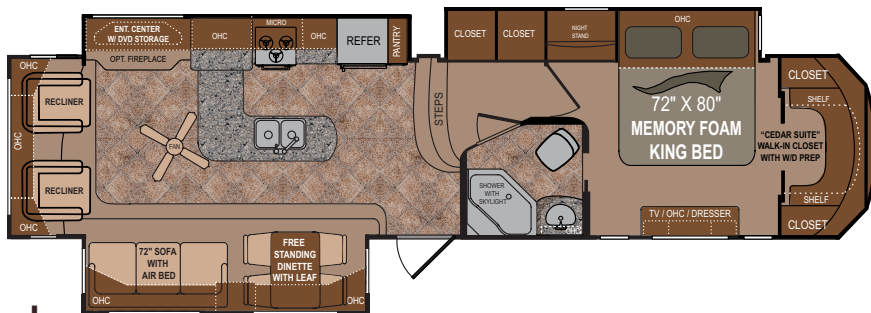
Fresh Water Tank(s) 69
 Black Water Tank(s) 48
 Grey Water Tank(s) 96
 Furnace BTU Output 40,000



3800FB

Unloaded Weight (lbs) TBD
 Hitch Weight (lbs) 2,426
 Cargo Capacity (lbs) 3,427
 Overall Height w/AC 12' 2"
 Overall Length 42' 10"

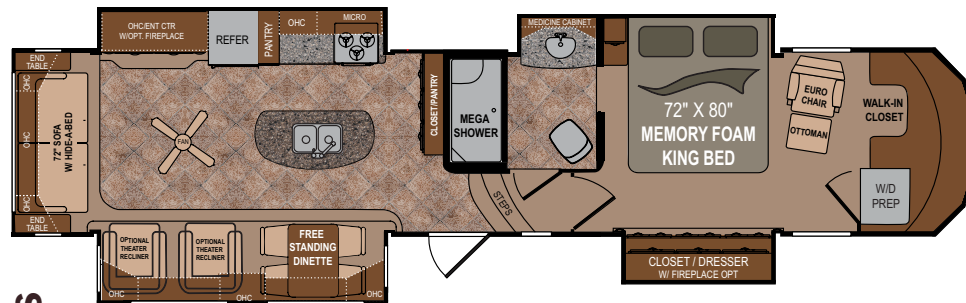
Fresh Water Tank(s) 69
 Black Water Tank(s) 48
 Grey Water Tank(s) 96
 Furnace BTU Output 40,000



3850RL

Unloaded Weight (lbs) 11,775
Hitch Weight (lbs) 2,470
Cargo Capacity (lbs) 3,725
Overall Height w/AC 12' 11"
Overall Length 38' 6"

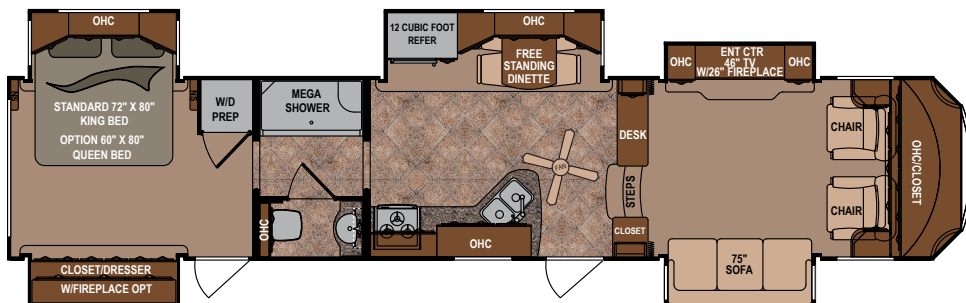
Fresh Water Tank(s) 69
Black Water Tank(s) 48
Grey Water Tank(s) 96
Furnace BTU Output 40,000



3860MS

Unloaded Weight (lbs) 12,480
Hitch Weight (lbs) 2,918
Cargo Capacity (lbs) 3,020
Overall Height w/AC 12' 2"
Overall Length 42' 10"

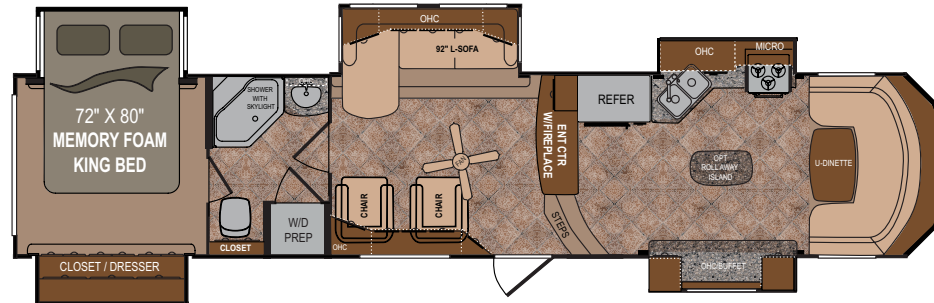
Fresh Water Tank(s) 69
Black Water Tank(s) 48
Grey Water Tank(s) 96
Furnace BTU Output 40,000



3855FL

Unloaded Weight (lbs) 13,039
Hitch Weight (lbs) 2,918
Cargo Capacity (lbs) 2,461
Overall Height w/AC 12' 1"
Overall Length 42' 4"

Fresh Water Tank(s) 69
Black Water Tank(s) 48
Grey Water Tank(s) 96
Furnace BTU Output 40,000



3870FK

Unloaded Weight (lbs) 12,516
Hitch Weight (lbs) 2,454
Cargo Capacity (lbs) 2,984
Overall Height w/AC 12' 10"
Overall Length 41' 6"

Fresh Water Tank(s) 69
Black Water Tank(s) 48
Grey Water Tank(s) 144
Furnace BTU Output 40,000

90° EXTENDED TURNING RADIUS FRONT CAP



Infinity's expanded turning radius front cap includes a back-up mirror and LED lights to make hitching-up a breeze. Perfect for extended cab or short bed trucks.



REAL WEIGHTS

Did you know that every Infinity is weighed at the factory as it leaves the production line? Our certified Acu-Weight includes options! Most competitors publish only a base weight that does not include options. Make sure that you know what the "REAL" weight of the unit is before you buy your next fifth wheel.

standard features

ALUMA LAM CONSTRUCTION

6-Sided Welded Aluminum Cage Construction
5-Way Lamination - Walls & Floor
High Gloss Fiberglass Exterior
3" Welded Aluminum Bath Deck
3" Thick Vacuum Bond Laminated Floor
2" Thick Vacuum Bond Laminated Sidewalls
Easy Hitch Front Cap
Elegant Espresso Brown Colored Caps
Front Cap w/Expanded Turning Radius & Hitch Vision Mirror
LED Docking Lights

"LCI ONE CHASSIS" SYSTEM

Lippert 10" Heavy Duty Drop Rail Z-Frame Chassis
Lippert 7,000 LB Super Lube Axles
TrailAir Equal Flex Suspension
Quad Shock Absorbers
4-Wheel Electric Brakes
16" 8-Lug Premium Aluminum Rims w/10-Ply Radial Tires
16" Steel Rim Spare Tire
Quad Entry Step
Hydraulic Front Landing Gear
Independent Selector Valves for Slide Rooms

CONVENIENT DOCKING CENTER

Gravity Water Fill, Exterior Shower, Black Tank Flush
City Water Fill, Cable & Phone Hookups & Satellite Prep
12-V Utility Light, Winterization, Bypass & Gate Valves

GLACIAL PACKAGE FOUR SEASON INSULATION

R-Values - Roof R40, Floor R40, Walls R9, Slide Rooms R8
Flex Foil Insulation in Enclosed Underbelly, Roof & Slide Floors
Forced Air Heat to Underbelly & Storage Compartment
Enclosed & Heated Tanks & Knife Valves
Fully Wrapped Skirt, Sidewalls to Main Frame Rails
40,000 BTU Furnace w/Forced Air Heat

GRAND CANYON PACKAGE

Cavernous Exterior Pass-Thru Storage
Industrialized Non-Skid Rubber Flooring
Lined Storage Walls & Bath Deck
TV Prep & Backer w/Cable Jack
30"x76" Entry Door w/"Welcome Back" Light
Large Power Awning

PLATINUM PACKAGE

LED Lighting Package
Residential Lane Furniture (N/A 3750, 3870 Dinette, 3860 Euro Chair, & 3855 Sofa)
Hand-Rubbed Antique-Glazed Cherry Cabinets
Solid Cherry Stiles, Drawer Fronts & Custom Slideout Fascia
Pre-Drilled & Screwed Residential Cabinetry
Stainless Steel, Ball Bearing Drawer Glides
Galley Toe Kicks Under Base Cabinets
Frameless Windows w/Designer Window Treatments
Solid Hardwood, Raised Panel Refrigerator Front
Accented Slide Room Wall Board

Maxx Air Vent in Kitchen
Stainless Steel Microwave & Oven
Solid Surface Countertops, Sink & Range Covers
Under-Mount Stainless Steel Galley Sink
Residential Style Cherry Wood Blinds/Night Shades in Bedroom
Crown Molding
Beauflor Flooring & Premium Carpet w/Pad
One-Piece Fiberglass Shower w/Seat & Glass Door
Large Molded Lavatory Sink
Residential-Style Padded Headboard
King "Comfort Zone" Memory Foam Mattress (3250 Queen)
Quiet Zone Ducted 15,000 BTU Air Conditioner
Digital Smart Dual Zone Thermostat
12-Gallon DSI Gas/Electric Water Heater
Cedar Suite Walk-In Closet w/Shelves & Bench Seat
6' 8" Radius Roof thruout Front Bedrooms

MEDIA CENTER PREMIUM ENTERTAINMENT SYSTEM

5.1 Surround Sound w/DVD & I-Pod Hookup
Dual Swivel X-Large Gliding Rocker Recliners (N/A 3750)
Exterior Stereo w/MP3 Connection & Speakers
Exterior TV Prep in Storage Compartment
32", 40" or 46" Samsung LCD High Definition Flat Screen TV
(See Floorplans)
Satellite Prep, Cable Jack & TV Antenna w/Power Booster

Infinity



PO BOX 2164 • 2164 Caragana Court • Goshen, Indiana 46527
Sales: 574.537.0600

Scan our quick response
code to open our website,
and explore the many
products we have to offer!



InfinityRV.com

Your Local Dealer



Disclaimer: Product information is as accurate as possible as of the date of publication of this brochure. Features, floorplans and specifications are subject to change without notice. Please also consult our website for more current product information and specifications.

Tow Vehicle Disclaimer CAUTION: Owners of Dutchmen Manufacturing, Inc., recreational vehicles are solely responsible for the selection and proper use of tow vehicles. All customers should consult with a motor vehicle manufacturer or their dealer concerning the purchase and use of suitable tow vehicles for Dutchmen products. Dutchmen disclaims any liability or damages suffered as a result of the selection, operation, use or misuse of a tow vehicle. Dutchmen's limited warranty does not cover damage to the recreational vehicle or the tow vehicle as a result of the selection, operation, use or misuse of the tow vehicle.