

TRACER

ULTRA LITE



PRIME TIME
Manufacturing

"No Sacrifices"

TRACER TRAVEL TRAILERS
WWW.PRIMETIMERV.COM



TRACER AIR

TRACER EXECUTIVE



• 3200 BHT Blackberry Décor

• 3150 & 3200 Outside Kitchen

"No Sacrifices!"

• Tracer Executive Bedroom



At Prime Time, we gave our design team very specific direction when creating Tracer, "Build a lightweight travel trailer without sacrificing style, comfort, or convenience." We asked them to, "Develop floorplans that were user-friendly and desirable, but still easy-to-tow." We put a stake in the ground and demanded that, "Tracer Executive have standout features like Lane® Residential Furniture, premium entertainment centers, huge windows, and expanded storage capabilities." We said, "Let's break new ground and build an ultralite trailer that exceeds even the most seasoned RV enthusiast expectations." There was one rule when we designed the Tracer Ultralite - "No Sacrifices!"





• 3100 RED Fall River Décor

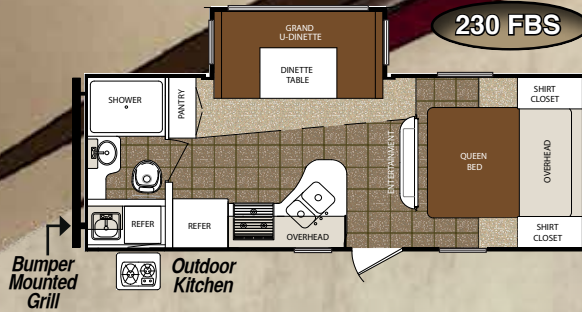
TRACER EXECUTIVE

The Tracer Executive represents the pinnacle of Ultralite innovation featuring wide open, spacious layouts that are often hundreds of pounds lighter than traditional floorplans. The Executive Series offers premium upgrades like residentially-inspired Lane® Furniture, Electric Awning, a 26" LCD Television, Slam Baggage doors, and a Universal Docking Center. Now you can have all the features and the floorplan of your choice in a lightweight easy-to-tow Tracer Executive.

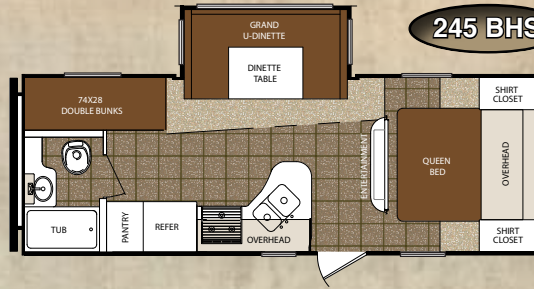


Champagne Fiberglass Option

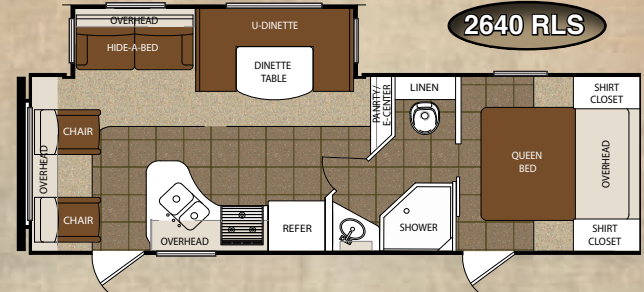
230 FBS



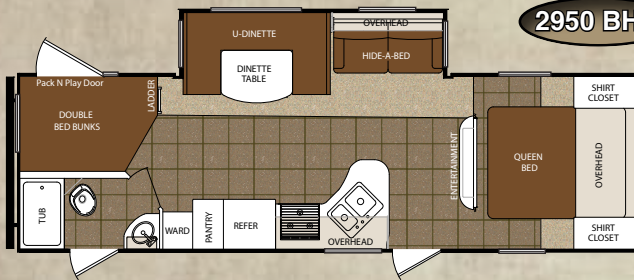
245 BHS



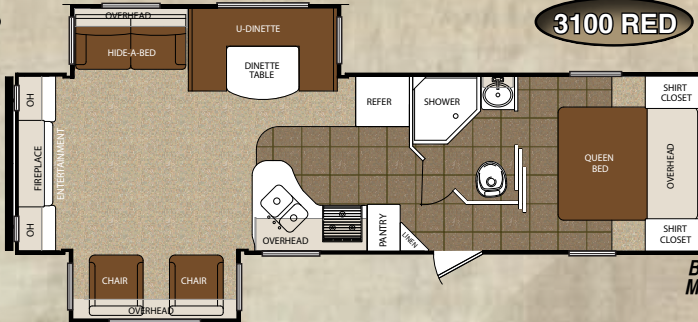
2640 RLS



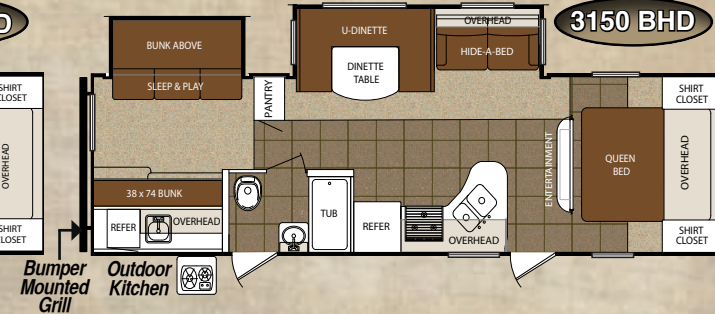
2950 BHS



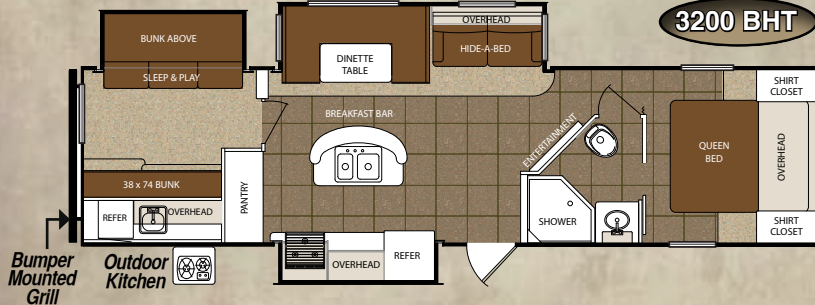
3100 RED



3150 BHD



3200 BHT



RELAX



RECLINE



REST



SPECIFICATIONS	230FBS	245BHS	2640RLS	2950BHS	3100 RED	3150 BHD	3200 BHT
Length	25' 2"	26' 10"	29' 5"	31' 8"	TBD	34' 0"	36' 9"
Height	10' 8"	10' 8"	10' 10"	10' 10"	TBD	10' 10"	10' 10"
Hitch	635 lbs.	598 lbs.	575 lbs.	767 lbs.	TBD	706 lbs.	767 lbs.
Ship Weight	4,920 lbs.	4,935 lbs.	5,693 lbs.	5,942 lbs.	TBD	6,955 lbs.	7,467 lbs.
Carrying Capacity	2,677 lbs.	2,554 lbs.	1,792 lbs.	1,788 bs.	TBD	2,755 lbs.	2,063 lbs.

(Above) The multi-function Sleep & Play feature (models 3150 and 3200) offers comfort and convenience during the day and a large sleeping area during the night.

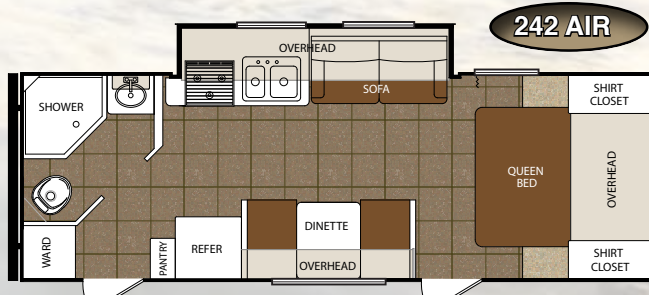
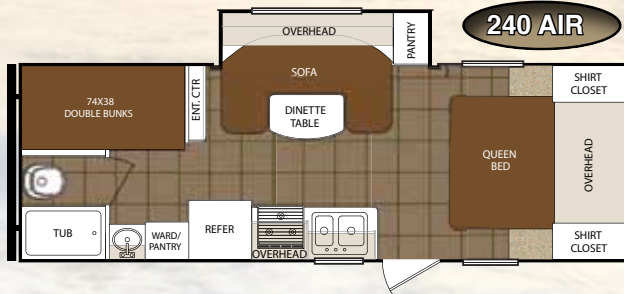
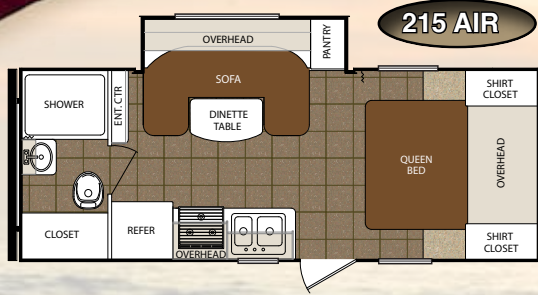


• 230 FBS Outside Kitchen Includes "Bumper Mounted Grill"

TRACER AIR

TRACER AIR

Engineered for today's smaller tow vehicles, Tracer AIR makes "No Sacrifices" by offering an unbeatable combination of light weights, extreme value, and great looks! The popular 215 AIR features a residential sized 32" x 40" shower, a LARGE wardrobe-linen closet, and a huge sofa/dinette combination. The 240 AIR combines two HUGE 38" wide bunk beds with premium storage thru-out for the ultimate lightweight bunkhouse floorplan! With Tracer AIR, you're sure to be impressed with our ability to "pack so much into so little!"



SPECIFICATIONS	215 AIR	240 AIR	242 AIR
Length	23' 10"	26' 5"	TBD
Height	10' 3"	10' 3"	TBD
Hitch	366 lbs.	430 lbs.	TBD
Ship Weight	3,615 lbs.	3,957 lbs.	TBD
Carrying Capacity	2,314 lbs.	1,902 lbs.	TBD



- A. 215 AIR Wardrobe/Linen
- B. 215 AIR & 240 AIR Pantry With Drawers
- C. 240 AIR Linen & Lav
- D. Rounded Front Profile Improves Aerodynamics

STANDARDS OPTIONS

CONSTRUCTION	AIR	EXECUTIVE
• Gel Coated Fiberglass Exterior	S	S
• ETERNABOND CONSTRUCTION Featuring:	S	S
* Laminated Aluminum Framed Side Walls R-11 (AIR R-7)	S	S
* Laminated Aluminum Framed End Walls R-11 (AIR R-7)	S	S
* Laminated Aluminum Framed Main Floor R-14	S	S
* Laminated Aluminum Framed Slideout Walls & Roof R-11	S	S
• 3/8" Walk On Roof Decking With Double Insulation R-14		S
• Snow Load Approved 5" Truss Rafters		S
• Laminated Aluminum Framed Roof R-11	S	
• One Piece Rubber Roof	S	S
• Thermal Package Plus		S
* Enclosed and Heated Underbelly		S
* Heated Holding Tanks		S
* Enclosed Dump Valves		S
* Heated Dump Valves		S
• 30 Amp Power Cord	S	S
• Fresh Water Capacity - 48 Gallons (AIR 38 Gallons)	S	S
• Waste Water Capacity - 30 Gallons	S	S
• Gray Water Capacity - 30 Gallons	S	S
EXTERIOR FEATURES & EQUIPMENT		
• A&E Awning	S	
• A&E Electric Awning		S
• (4) 2,500Lbs. Rated Manual Stabilizer Jacks	S	
• (4) 5,000Lbs. Rated Manual Stabilizer Jacks		S
• Bus Style Slam Latch Baggage Doors		S
• Huge Pass Thru Storage with Oversized Doors	S	S
• Universal Docking Center = UDC	S	S
• Black Tank Flush (UDC)	S	S
• Outside Shower with Recoil Hose (UDC)	S	S
• Spare Tire with Carrier	S	S
• Black, Dark Tinted, Radius Safety Glass Windows	S	S
• Roof Mounted Antenna	S	S
• Cable Ready (UDC)	S	S
• Satellite Ready (UDC)	S	S
• Outside TV Bracket & Hook-Ups	S	S
• Exterior GFI	S	S
• LP Quick Connect	S	S
• Outside Speakers	S	S
• Aerodynamic Fiberglass Front Cap		S
• Front Diamond Plate Rock Guard	S	S
• "E-Z Lube" Greasable Axle Hubs	S	S
• EZ Tow Wide Track Suspension		S
• Radial Tires	S	S
• Amber Porch Light	S	S
• Extended Drip Spouts	S	S
• Hitch Light	S	S
• Outside Kitchen Cook Center (230FBS,3150BHD,3200BHT)		S

INTERIOR FEATURES & EQUIPMENT	AIR	EXECUTIVE
• Raised Panel Kitchen Overhead Cabinet Doors	S	S
• 19" LCD TV	242 AIR	
• 26" LCD TV	S	S
• AM/FM/CD/DVD Stereo System with MP3 Plug In	S	S
• Pre-drilled and Screwed Cabinetry	S	S
• Solid Wood Core Cherry Finish Cabinetry	S	S
• Hartford Cherry Cabinet Doors	S	S
• Oil Rubbed Bronze Hardware	S	S
• Double Bowl Sink With Cover	S	S
• Hi Rise Kitchen Faucet	S	S
• Spice Rack Valance		S
• Grand Booth Dinette with 72" Window (230FBS&245BHS)		S
• Wall Border	S	S
• Residential Pleated Shades	S	S
• Lane® Furniture Residential Hide-A-Bed Sofa (most models)		S
• Lane® Furniture Residential Swivel Chairs (some models)		S
• Extended Height Toilet with Foot Flush	S	S
• Wooden Medicine Cabinet	S	S
• Tub/Shower Surround	S	S
• Skylight Above Shower (most models)		S
• 12 V Exhaust Fan In Bath		S
• "Evergreen" Select Foam Queen Size Mattress	S	S
• Quilted Bunk Matts (where applicable)	S	S
• Quilted Residential Bedspread	S	S
APPLIANCES		
• Large 2-Door Refrigerator	S	S
• 13,500 BTU Residential Ducted Air Conditioner	S	S
• 6 Gal Gas/Electric Water Heater	S	S
• Quick Recovery Mode for Water Heater	S	S
• Hi Capacity Gas Furnace	S	S
• Large Oven	S	S
• Range Hood with Light and Exhaust	S	S
• 55 AMP Converter	S	S
• Water Heater Bypass	S	S
• Hi Capacity Water Pump	S	S
• Microwave	S	S
SAFETY		
• CO Detector	S	S
• LP Detector	S	S
• Fire Extinguisher	S	S
• Dual Hitch Safety Chains	S	S
• Smoke Alarm	S	S
OPTIONS		
• Free Standing Dinette with 4 Chairs		O
• 15,000 BTU Air Conditioner		O

TRACER

ULTRA LITE



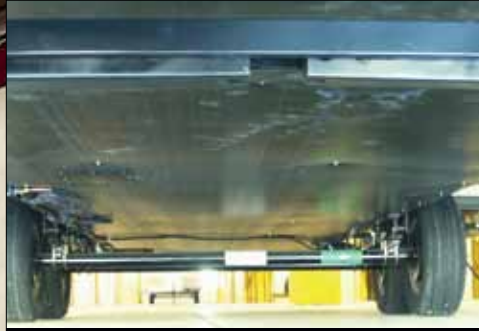
*Residentially-Inspired Lane® Furniture



* Lane® Furniture Hide-A-Bed Sofa



* Aerodynamic Front Fiberglass Cap



* Thermal Package Plus



* Bus Style Slam Latch Baggage Doors



* EZ Tow Wide Track Suspension



* "One Touch" Electric Awning



Universal Docking Station



Front Diamond Plate Rock Guard



Easy Access Low Point Drains



Extended Drip Spouts



Exterior Entertainment Hook-Up



LP Quick Connect



ETERNABOND® Construction

* N/A on Tracer AIR Models

DSI QUALITY CIRCLE AWARD WINNER - 2010, 2011, 2012

Prime Time Manufacturing is proud to be recognized as an industry leader in value, reliability, and overall quality by the Recreational Vehicle Dealers Association. This was accomplished by committing ourselves to "A Higher Standard" in design, construction, testing, and customer service. Check us out - we know you'll be impressed!



www.primetimerv.com



24/7 EMERGENCY ROADSIDE ASSISTANCE

For a worry-free ownership experience Forest River includes one year of Coach-Net RV Technical & Roadside Assistance with each RV purchase. Whether new to the RV lifestyle or an experienced RV enthusiast, Forest River owners have 24/7 access to technical, operational and emergency road service coverage throughout the US & Canada. Coach-Net's fast, dependable service is just a phone call away.

Coach-Net®
RV Technical & Roadside Assistance

HERE'S JUST A SAMPLE OF THE BENEFITS*

- ✓ Mobile Mechanic
- ✓ Free Jump Starts
- ✓ Tire Changes
- ✓ \$2000 Trip Interruption
- ✓ Appointment Assistance
- ✓ Lock Out Service
- ✓ Fuel Delivery
- ✓ Service Assistance
- ✓ Custom Trip Routing and Maps
- ✓ 24 Hour Emergency Messaging

*Exclusions and restrictions apply. See member guide for details.



Seal Tech Air Pressure Test



ETERNABOND Construction



Rain Bay



Seek-A-Leak Pressure Test



65 Point Secondary PDI



Forest River, Inc. encourages our customers to purchase their Forest River products from a local dealership whenever possible for the following reasons:

- 1) Forest River, Inc. dealers are independently owned and operated businesses so priority service and scheduling is at their discretion and is often provided to customers that purchased their unit at that dealership.
- 2) Purchasing locally allows customers to establish meaningful relationships with a dealer, enhancing the RV experience through assistance with product questions, user tips or RV regulations for your state or country, and much more!
- 3) Canadian customers must meet requirements to bring an RV purchased out of the country to their home. These requirements may involve additional inspections and certifications, taxes and fees. Your local Canadian Dealer is a professional at meeting these requirements.
- 4) Scheduling timely warranty repairs and adjustments through a local dealership provides far greater flexibility and convenience to you, the customer!

It is the goal of Forest River, Inc. that all of our RV owners fully enjoy the RV experience and that customer satisfaction meets or exceeds their expectations!

All illustrations and specifications contained in this literature are based on the latest product information at time of publication. Prime Time Manufacturing reserves the right to make changes in prices, colors, materials, equipment and specifications at anytime, without notice, and assumes no responsibility for any error in this literature. All units are shipped F.O.B. point of manufacture.

F-66-367 © 2013
Forest River Litho U.S.A.



Learn More
Scan this barcode using a QR Reader on your smart phone to learn more about Forest River.



A Berkshire Hathaway company.



Web Based Customer Service



Executive Quality Audits



Advanced Engineering

DEALER