

# LEPRECHAUN

By **Coachmen**

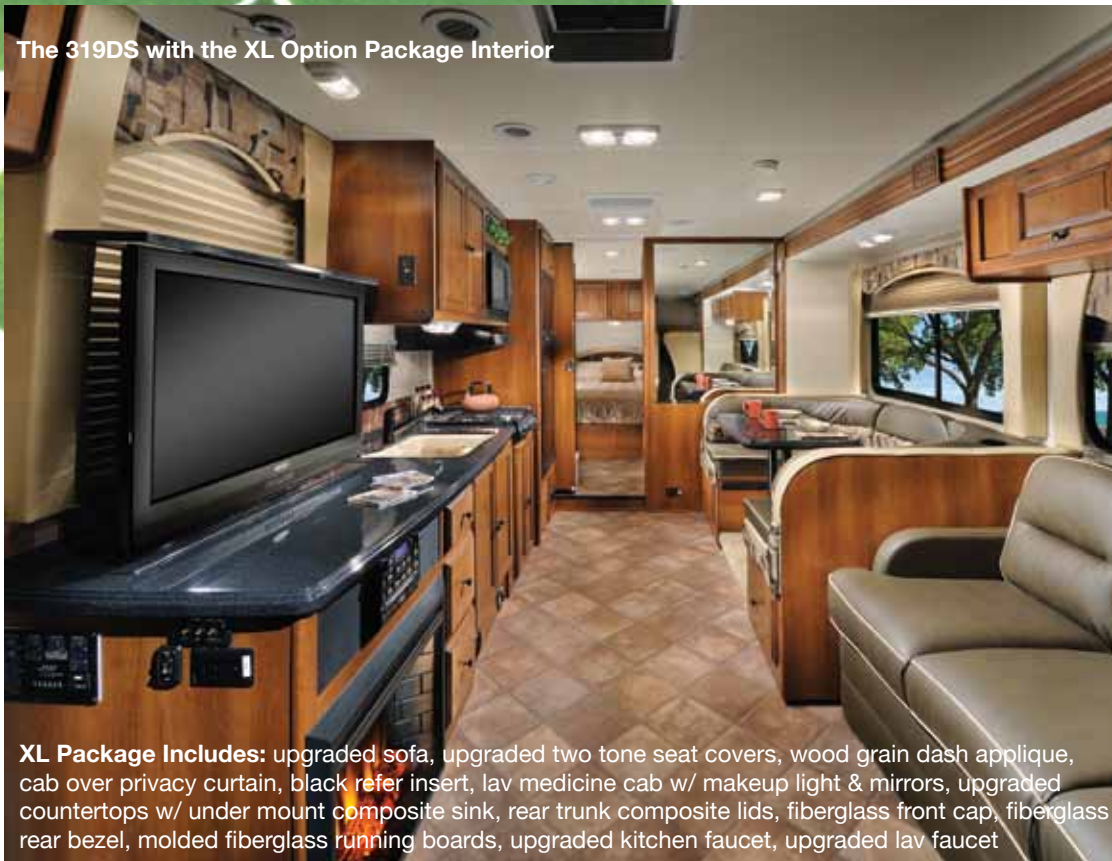
Comfort. Style. Value.



LEPRECHAUN  
By Coachmen

 **Coachmen**  
Recreational Vehicles

The 319DS with the XL Option Package Interior



**XL Package Includes:** upgraded sofa, upgraded two tone seat covers, wood grain dash applique, cab over privacy curtain, black refer insert, lav medicine cab w/ makeup light & mirrors, upgraded countertops w/ under mount composite sink, rear trunk composite lids, fiberglass front cap, fiberglass rear bezel, molded fiberglass running boards, upgraded kitchen faucet, upgraded lav faucet

The 319DS bedroom



The 319DS dinette

## Leprechaun Class C Motorhome

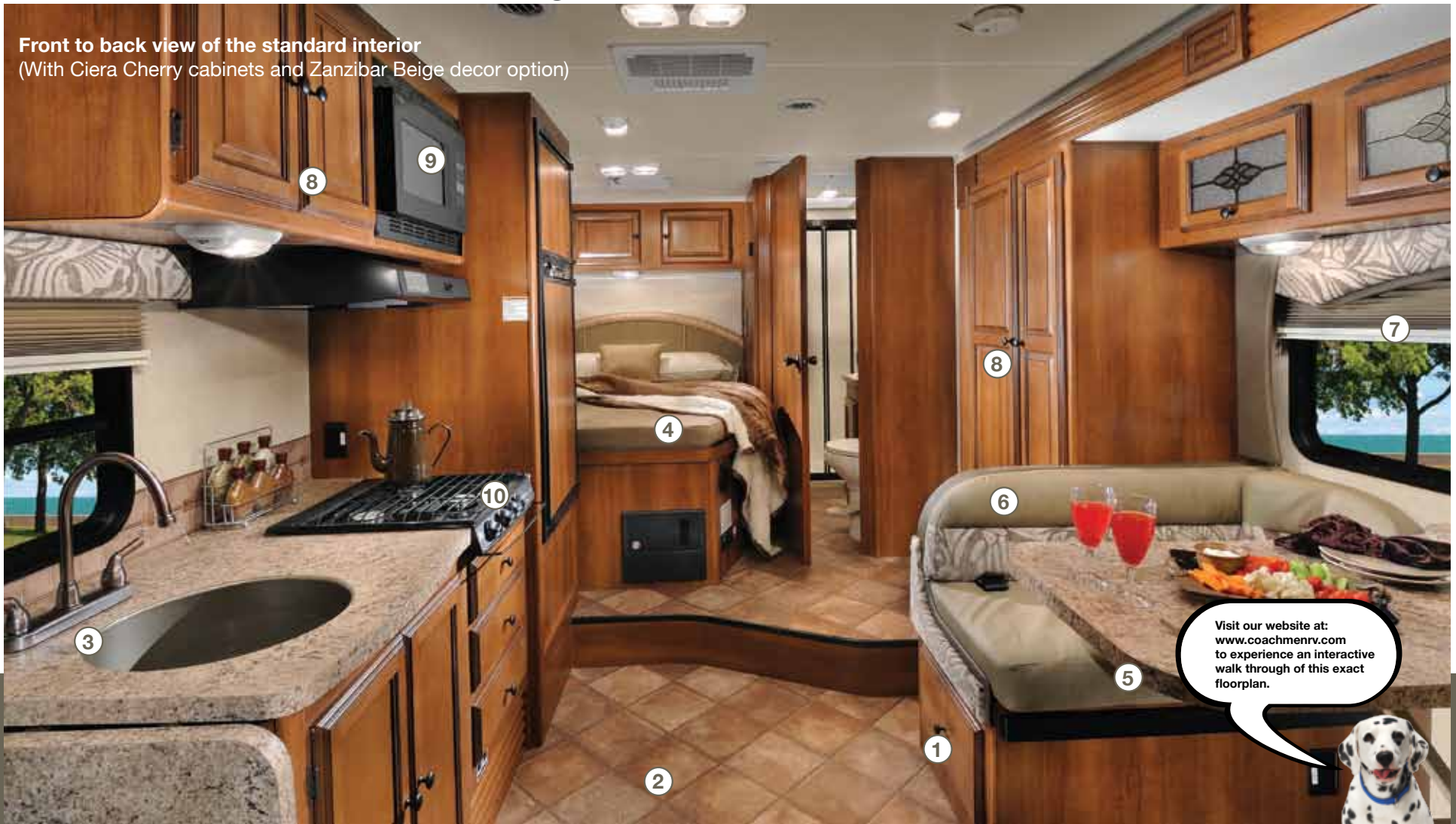
*The Coachmen Leprechaun offers you the "Better Stuff" discriminating RV'ers require.*

Since 1973 the Leprechaun motorhome has provided Better construction, Better interior appointments, and a long list of Better safety and convenience features that have won the confidence of generations of Leprechaun Class C owners. Owning something "Better" is a reflection of you everyone will appreciate. Your family will appreciate the expansive list of standard equipment like back-up camera, power awning, slideroom awning(s), tinted windows and 50 gallons of fresh water. "Better" includes the safety and durability of steel framed floors, and 2" sidewalls built with Azdel™ Superlite that can be customized with your choice of available graphics-standard, partial paint or rich full body paint. Inside your Leprechaun your family and friends will enjoy the long list of rich appointments including Upgraded Hardwood Cabinetry, Night Shades, Upgraded Flooring and Upgraded Furniture. Treat yourself to something better...***treat yourself to a Coachmen Leprechaun!***



# Leprechaun Interior Advantages.

Front to back view of the standard interior  
(With Ciera Cherry cabinets and Zanzibar Beige decor option)



- 1 **Access drawers under dinette:** Convenient storage right at your fingertips, no need to crawl or get on your hands and knees.
- 2 **Congoleum™ brand flooring:** Easy to care for with a "real tile" look. Non-skid surface, no cold-cracking, non-stick surface for easy cleaning.
- 3 **Large sink with high-rise faucet:** Attractive and durable with plenty of room for larger pots and pans. High rise faucet lets you get cookware cleaned up in a snap.
- 4 **60" X 80" Queen bed:** Sleeps 2 people comfortably, conveniently uses standard size linens and offers abundant leg room. (Most models)
- 5 **"Dream" dinette mechanism:** Easily convert your dinette into a comfortable sleeping area by simply pushing the dinette straight down. (Most models)
- 6 **Upgraded leather appointed furniture:** Live in the lap-of-luxury and enjoy the feel and look of the upgraded furniture.
- 7 **Night shades and hard valances:** Light blocking window treatments surrounded by a décor enhancing window treatment.
- 8 **Ciera Cherry hardwood drawer fronts and upper cabinet doors:** With mortise and tenon joints and screwed stile cabinet frames, they are not only beautiful but extremely durable.
- 9 **Built-in microwave oven:** Perfect for a quick cup of coffee, microwaving popcorn, cooking hot dogs or even s'mores if the weather won't permit a campfire.
- 10 **3 burner range top:** 9,000 BTU with a high-output front burner for high altitude cooking, also includes abundant pot and pan storage below the range.

The 319DS kitchen with the XL Option Package



The dinette area with the "Dream Dinette" mechanism in the entertaining position



The dinette area with the "Dream Dinette" mechanism in the sleeping position



Cab area shown with Zanzibar Beige decor

## Cab Area Features

- ❶ **Optional swing out TV:** Includes 26" LCD/HD TV. Also available with front entertainment center, 32" LCD/HD TV with Coach Stereo and CD/DVD player with subwoofer and 4 speakers. (N/A 319DS, 319SK)
- ❷ **Optional power fan:** This powerful fan keeps the coach comfortable and air circulating anytime you need it.
- ❸ **57" X 95" Overhead bunk:** This great feature allows for comfortable sleeping quarters. Also available with optional child safety net and ladder.
- ❹ **AM/FM/CD Touch screen radio with integrated back up camera:** The built in back up camera keeps you completely aware of your surroundings and makes backing up a snap.
- ❺ **Cab over window:** Increased airflow and natural lighting in cab over area for superior comfort.

# Leprechaun Exterior Advantages.



**"Even Cool" air conditioning system:** Radius corner "Amoco" insulated roof ducting for maximum cooling efficiency. 13.5K BTU standard, 15K BTU with heat pump available.



**Slide awnings:** Slide room awning protect your slide roof from dirt and debris.



**2" High gloss sidewalls sidewalls:** Hi-gloss fiberglass bonded to Azdel and aluminum framing with a composite R value of R9 — easy to clean, easy to maintain and extremely durable.



**Rear roto-cast storage compartment:** Made of an anti-corrosive polymer plastic, the seamless and durable exterior storage compartments are built to last. (Shown with compartment lids-as part of XL option package)

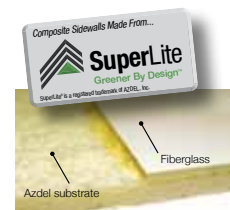


**Leprechaun's power awning:** One touch awning features adjustable arms for tilting or lowering the awning.



**Optional molded fiberglass front cap:** Stylish and aerodynamic. The one-piece molded fiberglass cap adds an automotive touch.

Shown with optional Harbor Mist full body paint



**Azdel "Super-Lite" sidewall building material:** The "no wood" alternative to laminated sidewalls. Azdel is lightweight, durable and moisture proof. The "Next Generation" in RV's.



**Generator as standard equipment:** "Full power" while traveling, tailgating or dry camping. Onan generator option available. (Off door side)



**Opt. Exterior Refer:** Part of the Exterior Camp Kitchen option-puts your favorite foods and beverages outside for quick and easy access. (317SA, 319DS & 319FK only)



**Opt. Exterior Kitchen:** Pull-out kitchen featuring running water, sink and drain, and free standing grill. (317SA, 319DS & 319FK only)



**Opt. Exterior Entertainment Center:** TV with DVD, Stereo, 2-speakers, and game port (32" TV in 317SA, 319DS, 319SK & 24" TV in 210QB, 220QB, 230CB, 260QB, 290QB, 320BH) Ideal for tailgating or outdoor family fun.

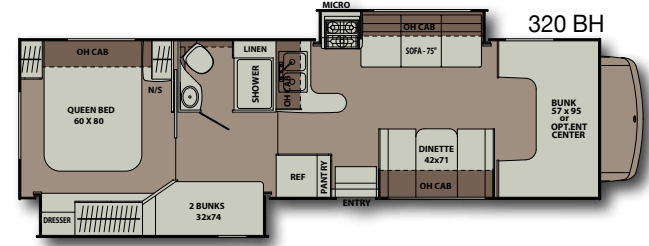
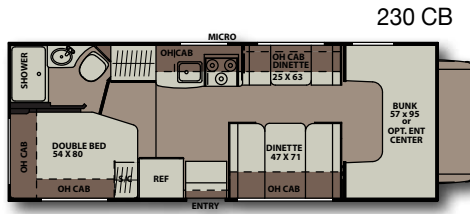
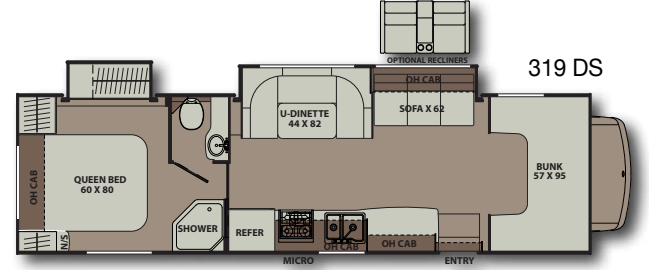
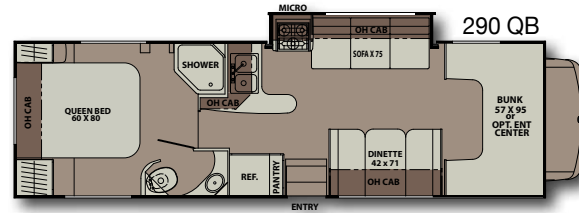
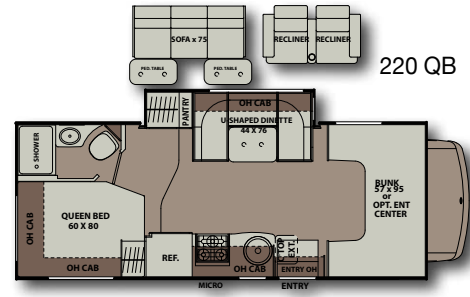
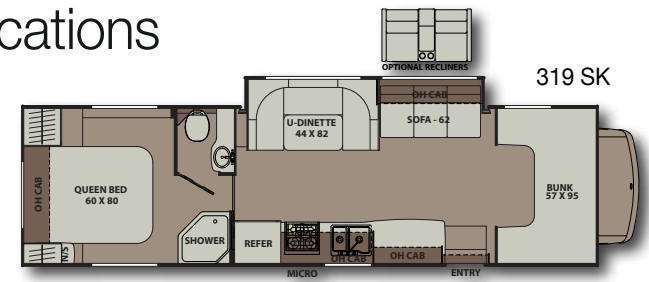
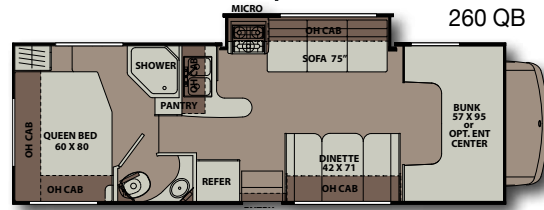
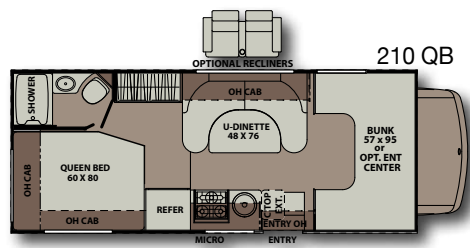


**Integrated Entry Step:** For easy and safe entry and exit to your motorhome.



**Running boards:** For splash protection and easier entry. Aluminum on standard package, fiberglass (shown) on XL option package.

# Leprechaun Floorplans and Specifications



MODEL	210 QB	220 QB	230 CB	260 QB	290 QB	317 SA	319 SK	319 DS	320 BH
CHASSIS	4500-CHEVY / 350-FORD	4500 CHEVY/ 350-FORD	4500 CHEVY/ 350-FORD	4500 CHEVY/ 450-FORD	4500 CHEVY/ 450-FORD	450-FORD	450-FORD	450-FORD	450-FORD
ENGINE	V8 - 6.0L / V10 - 6.8L	V8-6.0L / V10-6.8L	V8-6.0L / V10-6.8L	V8-6.0L / V10-6.8L	V8-6.0L / V10-6.8L	V10 - 6.8L	V10 - 6.8L	V10 - 6.8L	V10 - 6.8L
HORSE POWER	324 / 305	324 / 305	324 / 305	324 / 305	324 / 305	305	305	305	305
TORQUE	373 / 420	373 / 420	373 / 420	373 / 420	373 / 420	420	420	420	420
WHEEL BASE	159" / 158"	169" / 168"	183" / 182"	191" / 190"	209" / 208"	223"	223"	223"	223"
GVWR* (LBS.)	14,200 / 12,500	14,200 / 12,500	14,200 / 12,500	14,200 / 14,500	14,200 / 14,500	14,500	14,500	14,500	14,500
GCWR* (LBS.)	20,000 / 18,500	20,000 / 18,500	20,000 / 18,500	20,000 / 22,000	20,000 / 22,000	22,000	22,000	22,000	22,000
CW* (APPROX. LBS.)	9,300 / 9,087	10,300 / 10,300	10,300 / 9,986	11,000 / 11,250	11,300 / 11,500	12,560	12,000	12,270	12,133
CCC (APPROX. LBS.)	5,100 / 3,413	3,900 / 2,460	3,900 / 2,514	3,200 / 3,250	2,900 / 3,000	1,940	2,500	2,230	2,367
GAWR FRONT (LBS.)	4,600 / 4,600	4,600 / 4,600	4,600 / 4,600	4,600 / 5,000	4,600 / 5,000	5,000	5,000	5,000	5,000
GAWR REAR (LBS.)	9,600 / 8,500	9,600 / 8,500	9,600 / 8,500	9,600 / 9,600	9,600 / 9,600	9,600	9,600	9,600	9,600
INTERIOR HEIGHT	6' 11"	6' 11"	6' 11"	6' 11"	6' 11"	6' 11"	6' 11"	6' 11"	6' 11"
EXTERIOR WIDTH	8' 4"	8' 4"	8' 4"	8' 4"	8' 4"	8' 4"	8' 4"	8' 4"	8' 4"
EXTERIOR HEIGHT (W/ A/C)	10' 10"	10' 10"	10' 10"	10' 10"	10' 10"	10' 10"	10' 10"	10' 10"	10' 10"
EXTERIOR LENGTH (W/ HITCH)	23'-11" / 23'-6"	24'-10" / 24'-5"	26'-1" / 25'-8"	28'-5" / 28'-0"	31'-1" / 30'-8"	32'-6"	32'-6"	32'-6"	32'-6"
HITCH WEIGHT (LBS.)	5,000	5,000	5,000	5,000	5,000	5,000	5,000	5,000	5,000
FUEL CAPACITY (GAL.)	57 / 55	57 / 55	57 / 55	57 / 55	57 / 55	55	55	55	55
LP CAPACITY (LBS.)	68	68	68	68	68	68	68	68	68
FRESH WATER CAPACITY (GAL.)	50	50	50	50	50	50	50	50	50
WATER HEATER CAPACITY (GAL.)	6	6	6	6	6	6	6	6	6
GREY TANK CAPACITY (GAL.)	25	28	28	25	29	29	29	29	34
BLACK TANK CAPACITY (GAL.)	22	22	22	29	29	29	29	29	29
EXTERIOR STORAGE (CU. FT.)	91	92	93	84	112	109	100	100	76
AWNING LENGTH (FT.)	15'	16'	17'	15'	16'	20'	21'	21'	11'

\*Please refer to the back cover regarding important information concerning vehicle weights.

# Leprechaun Standards and Options

## WARRANTY

- Motorhome - 12 Month/ 12,000 mile limited warranty
- Ford Chassis - 36 month/ 36,000 mile bumper-to-bumper warranty
- Ford Powertrain - 60 month/ 60,000 mile warranty
- Chevy Chassis - 36 month/ 36,000 mile bumper-to-bumper warranty
- Chevy Powertrain - 60 month/ 100,000 mile warranty

## INTERIOR APPOINTMENTS

- Residential Hardwood Cabinet Doors & Drawers
- Oil Rubbed Bronze Hardware
- Laminate Self Edge Countertops
- Pull Out Countertop Extension (230QB)
- Upgraded Linoleum Flooring Throughout
- Pleated Night Shade Window Treatments
- U-shaped Dinette (210QB, 220QB, 319DS, 319SK)
- Booth Dinette with "Dream Dinette" Mechanism (N/A 210QB, 220QB, 319SK, 319DS)
- Small Booth Dinette with "Dream Dinette" Mechanism, Converts into a Sofa (230CB only)
- Jackknife Sofa (N/A 210QB & 230QB)
- High Quality Upholstery
- Incandescent Ceiling Lights
- Interior Safety Grab Handle at Entry Door
- Conveniently Placed Light Switches

## GALLEY

- Residential Size, Overhead Microwave Oven
- 3-Burner Cooktop with Pots & Pans Drawer Below
- Power, Lighted Range Hood
- Large Double Door Refrigerator with Wood Refer Insert
- Composite Round Bowl Sink with Sink Cover (210QB, 220QB & 230QB only)
- Composite Double Bowl Sink with Sink Cover (N/A 210QB, 220QB & 230QB)
- Residential Metal Drawer Glides
- Hi-Rise Kitchen Faucet
- Mini Blind

## SLEEPING

- Bunk Beds - 32x74 (320BH)
- Queen Bed - 60x80 (N/A 230QB)
- Double Bed - 54x80 (230QB)
- Cab Over Bunk
- Deluxe Bedspread
- Fabric Covered Mattress Bunks and Cab Over Beds
- Upgrade Headboard (N/A 260QB)
- Shirt Closet and/or Wardrobe
- Solid Privacy Door (N/A 210QB, 220QB & 230CB)
- Bedroom LCD TV Backer & Connections-Mounting Backer, Power Outlet, Cable Hook-up

## ELECTRICAL AND HEATING

- "Coach Command" Systems Control Center
- 30 amp Power Cord
- 55 amp Electronic Converter
- Auxiliary Coach Battery
- GFI Circuit
- Battery Disconnect
- Wall Mounted Thermostat
- 20K BTU Ducted E.I. Furnace (210QB, 220QB & 230QB)
- 30K BTU Ducted E.I. Furnace (N/A 210QB, 220QB & 230QB)
- 13,500 BTU Non-Ducted Roof A/C (210QB, 220QB & 230QB)
- 13,500 BTU "Even Cool" Ducted Roof A/C (N/A 210QB, 220QB & 230QB)
- Generac 40G Series Gas Generator

## BATHROOM AND WATER SYSTEM

- Porcelain Foot Flush Toilet
- Power Bath Vent Fan
- ABS Molded Shower Surround
- Frosted Shower Door
- Shower Skylight
- 6-Gallon Gas E.I. Water Heater
- Demand Water Pump
- Tuff-Pex Plumbing Supply Lines
- Composite Single Bowl Lav Sink
- Hand Towel Ring, Toilet Paper Holder, Robe and Towel Hooks
- Black Tank Flush
- Easy Access Waste Tank Termination Station
- Upgrade Shower Head with Flexible Hose Extension
- Vanity Mirror

## SAFETY EQUIPMENT

- Propane Leak Detector/ Alarm
- Smoke Detector/ Alarm
- Carbon Monoxide Detector/ Alarm
- Fire Extinguisher
- Dead Bolt Lock at Entry Door
- Multiple Seat Belt Locations
- Travel Easy, Roadside Assistance

## EXTERIOR/ CONSTRUCTION/CHASSIS

- Laminated Steel Floor
- 2" Laminated Aluminum Framed Sidewalls
- Laminated Aluminum Framed Crowned with TPO Roof Membrane
- Hi-Gloss Exterior Fiberglass Sidewalls
- Azdel "Superlite" Composite Sidewall Substrate
- Exterior Vinyl Graphics
- 80" Radius Entrance Door with Window
- Steel Step Well with Built-in Easy Access Battery Compartment Integrated Drop-Down Entry Step
- Radius Exterior Storage Doors
- Exterior Shower
- Patio Light
- Exterior Rear Compartment Light
- Power Awning with Vinyl Weather Guard
- Slide-out Awning Toppers
- Safety Glass Windows
- Steel Rear Bumper
- "Warehouse" Exterior Roto-Molded Storage Compartment
- Exterior Entry Assist Handle
- TV Power Boost Antenna
- 110 volt, GFI Protected Exterior Receptacles
- Campside Coax Connection
- Privacy Drape-Lower Cab
- AM/FM/CD Dash Radio with Touch Screen Controls & Integrated Back-up Monitor
- Reclining Pilot & Passenger Seats
- Driver & Passenger Air Bags
- Cruise Control
- Tilt Steering Wheel
- Power Windows & Locks
- Dash Air Conditioning
- Keyless Entry (Ford E450 Chassis only)
- Dual 12 volt Power Ports
- Exterior LED Running Lights & Tail Lights
- Towing Hitch with 7 Way Plug
- Stainless Steel Wheel Inserts
- Aluminum Running Boards
- Back-up Camera
- Upgraded Exterior Mirrors

## OPTIONAL EQUIPMENT

- Front Entertainment Center with 32" LCD TV & Home Stereo (N/A 319SK, 319DS)
- 24" LCD TV w/ DVD - Coach (N/A 317SA, 319SK, 319DS & 320BH with Ent. Package)
- 15" LCD TV & DVD Player - Bedroom (290QB & 320BH only)
- 24" LCD TV & DVD Player - Bedroom (N/A 290QB & 320BH)
- Bunk House Entertainment Package (320BH) - 24" LCD TV in Cabover with DVD player & 2 Bunk Bed TV's with DVD Players
- Entertainment Center with 40" LCD TV & Home Stereo (319SK & 319DS only- Pop-up Electric Lift & Home Stereo)
- Mid Ship 32" LCD TV with Hideaway Pull Down Mechanism in Dinette Overhead & Home Stereo System (317SA only)
- Exterior Entertainment Center-32" LCD TV & Stereo System with DVD player (317SA, 319SK & 319DS only)
- Exterior Entertainment Center-24" LCD TV & Stereo System with DVD player (210QB, 220QB, 230CB, 260QB, 290QB, 320BH only)
- Child Safety Net & Ladder
- Cabover & Bedroom Fantastic Power Vent Fans
- Onan 4.0KW Gas Generator
- Air Assist Suspension (Mandatory 317SA, 319DS, 320BH)
- 6 Gal DSI Gas/ Electric E.I. Water Heater
- Second Auxiliary Battery
- Side View Cameras
- Heated, Remote Exterior Mirrors
- 4-Point, Automatic Hydraulic Leveling Jacks
- "Campin Cozy" Cold Weather Package: Dual Pane Windows & Heated Tanks
- Rear ladder
- Spare Tire
- Single Power Entrance Step
- Molded Fiberglass Front Cap (Mandatory with Paint Job, Standard in XL Package)
- Partial Body Paint (Front Cap Option Required)
- Full Automotive Body Paint (Front Cap Option Required)
- Aluminum Rims
- Convection Microwave Oven
- Exterior "Camp Kitchen" - Refrigerator, Grill, Sink and Countertop Area (317SA, 319SK & 319DS only)
- Electric Fireplace (319SK & 319DS only)
- Dual Recliners (IPO Dinette/Sofa on 210QB, 220QB & IPO Sofa on 317SA, 319SK & 319DS)
- Sofa with two tables IPO Dinette (220QB only)
- Canadian 240Z Canadian RV Compliance (Motorhome conversion only)
- Canadian Compliance (Speedometer/Lights)

## XL OPTION PACKAGE

- Upgraded Ultra Leather Sofa
- 2-Tone Ultra Leather Seat Covers
- Wood Grain Dash Appliqué
- Cabover Privacy Curtain (N/A with Front Entertainment Center)
- Gloss Black Refrigerator Insert Panels
- Bathroom Medicine Cabinet with Makeup Light & Mirror
- Upgrade Countertops with Under-mount Composite Sink
- Composite Lids for Trunk Boxes in Exterior "Warehouse" Storage Compartment
- Molded Fiberglass Front Cap
- Fiberglass Style Bezel at Top of Rear, Exterior Wall
- Molded Fiberglass Running Boards with Wheel Well Flair
- Upgraded Kitchen Faucet
- Upgraded Bathroom Faucet

## INTERIOR OPTIONS



Ciera Cherry Cabinetry

## Redwood



## Zanzibar Beige



## Copper Geo



The two tone ultra leather seat covers of the XL option package



FREE ONE YEAR MEMBERSHIP –  
COACHMEN OWNERS' ASSOCIATION!

Coachmen is proud to sponsor the largest manufacturer sponsored camping club in North America... Coachmen Owners' Association (COA). COA provides you a world of ways to enjoy your RV. This is **FUN ON OVERDRIVE** and provides: Free Trip Routing, Exciting Tours & Rallies, Free Campground Directory, Local/State Club Activities, Easy RVing Magazine Free, Theme Park Discounts, Fuel Discounts, Free onebigplanet® Memberships with discounts at 180,000 merchants and Much More!

**Every new Coachmen RV buyer is eligible for a 1 year FREE membership in the Coachmen Owners' Association. It all adds up to an easy ownership experience!**



TRAVEL EASY™ ROADSIDE ASSISTANCE

RVing is easier with Coachmen's Travel Easy™ Roadside Assistance provided FREE the first year of ownership to those who purchase a New Coachmen RV. Administered by CoachNet, this service provides you with 24/7 operational, technical and emergency road service coverage. Also included is towing, fuel delivery, jump starts, lockout service, tire changes, mobile mechanic and unlimited technical assistance. Anywhere. Anytime. Travel Easy™ is the security of knowing that help is an easy phone call away.



Forest River, Inc. encourages our customers to purchase their Forest River products from a local dealership whenever possible for the following reasons:

- 1) Forest River, Inc. dealers are independently owned and operated businesses so priority service and scheduling is at their discretion and is often provided to customers that purchased their unit at that dealership.
- 2) Purchasing locally allows customers to establish meaningful relationships with a dealer, enhancing the RV experience through assistance with product questions, user tips or RV regulations for your state or country, and much more!
- 3) Canadian customers must meet requirements to bring an RV purchased out of the country to their home. These requirements may involve additional inspections and certifications, taxes and fees. Your local Canadian Dealer is a professional at meeting these requirements.
- 4) Scheduling timely warranty repairs and adjustments through a local dealership provides far greater flexibility and convenience to you, the customer!

It is the goal of Forest River, Inc. that all of our RV owners fully enjoy the RV experience and that customer satisfaction meets or exceeds their expectations!



**AMERICA'S NUMBER  
ONE SELLING CLASS C  
MANUFACTURER.**

2010-2011 Statistical Surveys Inc.



**Learn More**  
Scan this barcode using a QR Reader on your smart phone to learn more about Forest River.



A Berkshire Hathaway company.

## Leprechaun Exterior Options



Standard Graphics



Partial Body Paint



Harbor Mist Full Body Paint



Cabernet Full Body Paint

**\*GVWR (Gross Vehicle Weight Rating):** The maximum permissible weight of the unit, including the unloaded vehicle weight (UVW) plus all fluids, cargo, optional equipment and accessories. For safety and product performance, do not exceed the GVWR. **\*CW (Curb Weight):** The weight of the unit without a factory or dealer installed options, plus allowance for the weight of full fuel capacity. The "payload capacity" for all other fluids, cargo, occupants, optional equipment, and accessories can be determined by subtracting the CW from the GVWR. **\*GCVWR (Gross Combined Weight Rating):** The maximum total weight of the loaded unit, plus a tow vehicle. This includes the weight of both the unit and tow vehicle, fuel for each, all other fluids, cargo, occupants, optional equipment and accessories. **Wider Widths:** Numerous Coachmen floorplans feature the "wide body" design concept, which gives you significantly enhanced interior living space and innovative floorplans.

Each Coachmen RV is weighed at the manufacturing facility prior to shipping. A label identifying the dry weight of the actual unit and the available cargo and occupant capacity is applied to every Coachmen RV prior to leaving our facilities.

Floor plans and specifications are based on the latest product information. Forest River, Inc. reserves the right to make changes in drawings and specifications at any time without notice and assumes no responsibility for any errors in the site. The model number does not necessarily reflect the overall length of a particular unit.

In making your purchase decision, you should be aware that a few states restrict access on some or all

roads within the state to vehicle with a maximum 96-inch width, although special road usage permits may be available. Vehicles up to 102-inches in some width are permitted in the vast majority of states. You should confirm the road usage laws in the states of interest to you before making your purchase decision. If width is of concern to you, we invite you to consider the broad array of other Coachmen models offers in the standard 96-inches width.

**Important Note:** All capacities are approximate, and all dimensions are nominal. Coachmen motorhomes are designed to allow for a wide variety of uses, extended trips with two people or short trips with multiple people. Accordingly, each unit allows ample room for sleeping, seating, fluids and cargo. While the customer is the beneficiary of this design, the customer also bears the responsibility to select the proper combination of passengers, cargo, load, and tow vehicle without exceeding the chassis weight capabilities. Consumer may need additional braking capacity to tow loads greater than 1,000 pounds.

Seat belts should always be worn for passenger safety. Seat belts are provided at most locations to allow convenience in selecting which seat to occupy. However, it is not intended that all seating positions equipped with a seat belt may be occupied while the vehicle is in motion, without regard to other weight factors.

All Coachmen motorhomes are designed to ensure that the number of passengers allowed while the vehicle is in motion will always at least equal the stated sleeping capacity. Though extra seat belts may be provided, for your safety and the proper operation of your vehicle, limit your passengers to the number allowed by the Net Carrying Capacity of your vehicle.



**Your Leprechaun Dealer**

Coachmen Recreational Vehicle Company  
423 N. Main St., P.O. Box 30  
Middlebury, IN 46540

To learn more about Coachmen RV and our products and see how Coachmen is making the easy life easier, visit [www.coachmenrv.com](http://www.coachmenrv.com)

All information contained in this brochure is believed to be accurate at the time of publication. However, during the model year, it may be necessary to make revisions, and Coachmen reserves the right to make all such changes without notice, including changes in prices, colors, materials, equipment and specifications, as well as the addition of new models and the discontinuance of models shown in this brochure. Therefore, please consult with your Coachmen dealer and confirm the existence of any materials, design or specifications that are material to your purchase decision.