

Flagstaff

SUPER LITE, MICRO LITE, SHAMROCK



Flagstaff SUPER LITE, MICRO LITE, SHAMROCK

FLAGSTAFF

SUPER LITE SERIES

EXPLORE OUR FLOOR PLANS YOU WILL BE PLEASED WITH WHAT YOU FIND.

Our trailers are packed full of quality features in order to bring to you one of the best values in the light weight market. There are spacious flush floor slides, distinctive decors with solid wood door and drawer fronts and free standing tables with easily adjustable legs. We only use our best in side the "Super Lite" series.



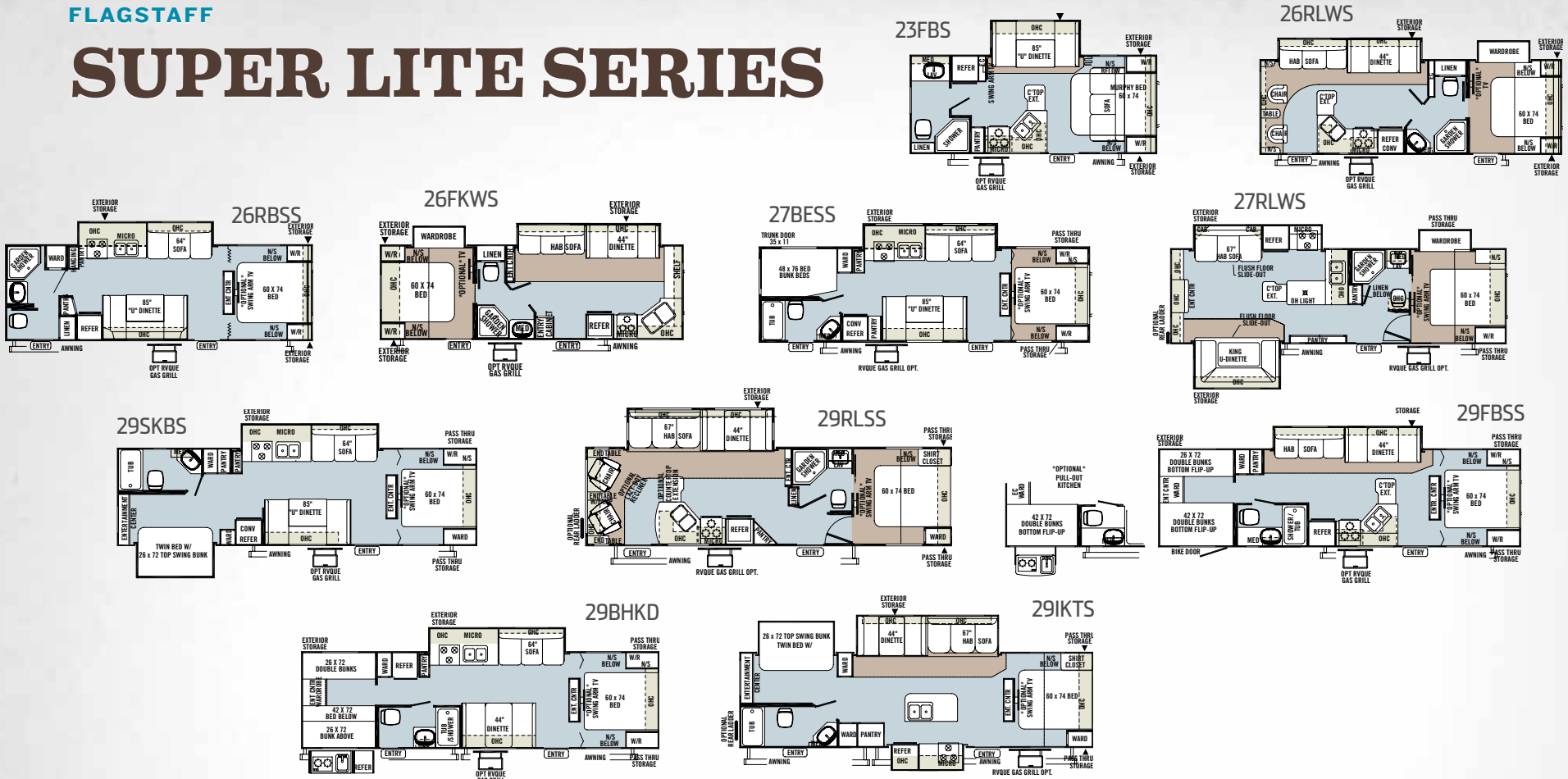
27RLWS Solara with Cherry



Accommodating Kitchen with Tremendous Counter Space.

FLAGSTAFF

SUPER LITE SERIES



SPECIFICATIONS

MODEL	23FBS	26RLWS	26RBSS	26FKWS	27BESS	27RLWS	29SKBS	29RLSS	29FBSS	29BHKD	29IKTS
BASE/DRY UNIT WEIGHT	3819	5676	4977	5635	5276	6145	5865	6074	5267	5709	6476
BASE DRY HITCH WEIGHT	670	739	532	635	613	621	668	611	754	603	892
BASE DRY AXLE WEIGHT	3149	4937	4445	5000	4663	5524	5197	5463	5267	5106	5584
CARGO CAPACITY	1833	1025	1517	962	1299	1438	1765	1499	1695	1856	1378
LENGTH	23' 9"	29' 8"	29' 8"	29' 7"	31' 11"	31' 11"	33' 8"	33' 8"	33' 8"	33' 8"	33' 8"
WIDTH	96"	96"	96"	96"	96"	96"	96"	96"	96"	96"	96"
HEIGHT W/O A/C	116"	115"	112"	116"	111"	117"	111"	114"	115"	111"	115"
INTERIOR HEIGHT	80"	80"	80"	80"	80"	80"	80"	80"	80"	80"	80"
FRESH WATER CAPACITY	36 gal	36 gal	36 gal	36 gal	36 gal	36 gal	36 gal	36 gal	36 gal	36 gal	36 gal
GRAY WATER CAPACITY	37 gal	37 gal	37 gal	74 gal	37 gal	37 gal	37 gal	37 gal	37 gal	37 gal	74 gal
BLACK WATER CAPACITY	37 gal	37 gal	37 gal	37 gal	37 gal	37 gal	37 gal	37 gal	37 gal	37 gal	37 gal



Model number of any particular unit does not necessarily reflect the overall length of the unit itself. Dry weight are estimates.

INTRODUCING THE SUPER LITE EMERALD PACKAGE

Flagstaff has put together a group of appealing features to enhance the appearance of the Super Lite series of travel trailers. The Emerald Package adds style and luxury to a trailer already packed full of value. A complete list of the Emerald Package contents can be found in the Standards and Options section on page 15.



Tan Fiberglass Exterior w/ Black Accents



Tinted Bonded Frameless Windows



Slam Latches on Storage Doors



Upgrade Decorative Slide Out Fascia
(Shown with Solara/Cherry Decor)

Solid Surface Corian Counter Top

FLAGSTAFF

MICRO LITE SERIES



COMPARE AND YOU WILL FIND
THE MICRO LITE TRAILER
IS THE BEST CHOICE.

As with every series designed by Flagstaff, a premium is placed on superior craftsmanship and unmatched value. By combining lightweight floor plans with residential feature you wouldn't expect to find, the Micro Lite surpasses other products in it's class.



25KS Oasis with Cherry

Front Bedroom with the Murphy Bed in the Down Position

FLAGSTAFF CLASSIC SUPER LITE

MICRO LITE SERIES



WANT TO TOW A TRAILER BUT HAVE NO TRUCK?

When towing size and weight are your focus. You will find that these specially designed Micro Lite models offer flexible floor plans that provide you with more comfort and amenities that you would expect all within the towing capacity of many small SUV's and Mini Vans.

SPECIFICATIONS

MODEL	19RB	19FD	19RD
BASE/DRY UNIT WEIGHT	2822	2945	2710
BASE DRY HITCH WEIGHT	345	394	417
BASE DRY AXLE WEIGHT	2477	2551	2293
CARGO CAPACITY	985	911	1169
LENGTH	20' 4"	20' 4"	20' 4"
WIDTH	90"	90"	90"
HEIGHT W/O A/C	105"	105"	105"
INTERIOR HEIGHT	78"	78"	78"
FRESH WATER CAPACITY	36 gal	36 gal	36 gal
GRAY WATER CAPACITY	30 gal	30 gal	30 gal
BLACK WATER CAPACITY	30 gal	30 gal	30 gal

Model number of any particular unit does not necessarily reflect the overall length of the unit itself. Dry weight are estimates.



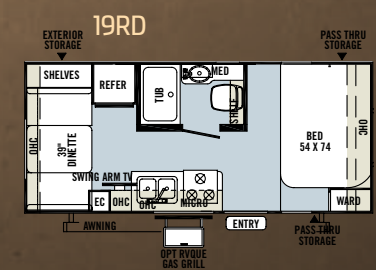
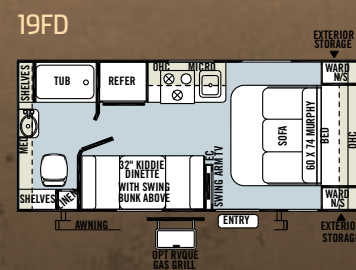
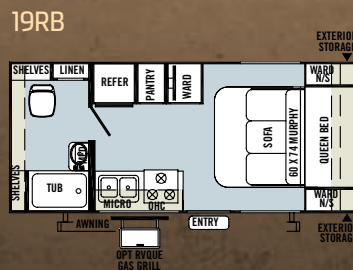
19FD Oasis with Hickory



Murphy Bed Shown in the Down Position

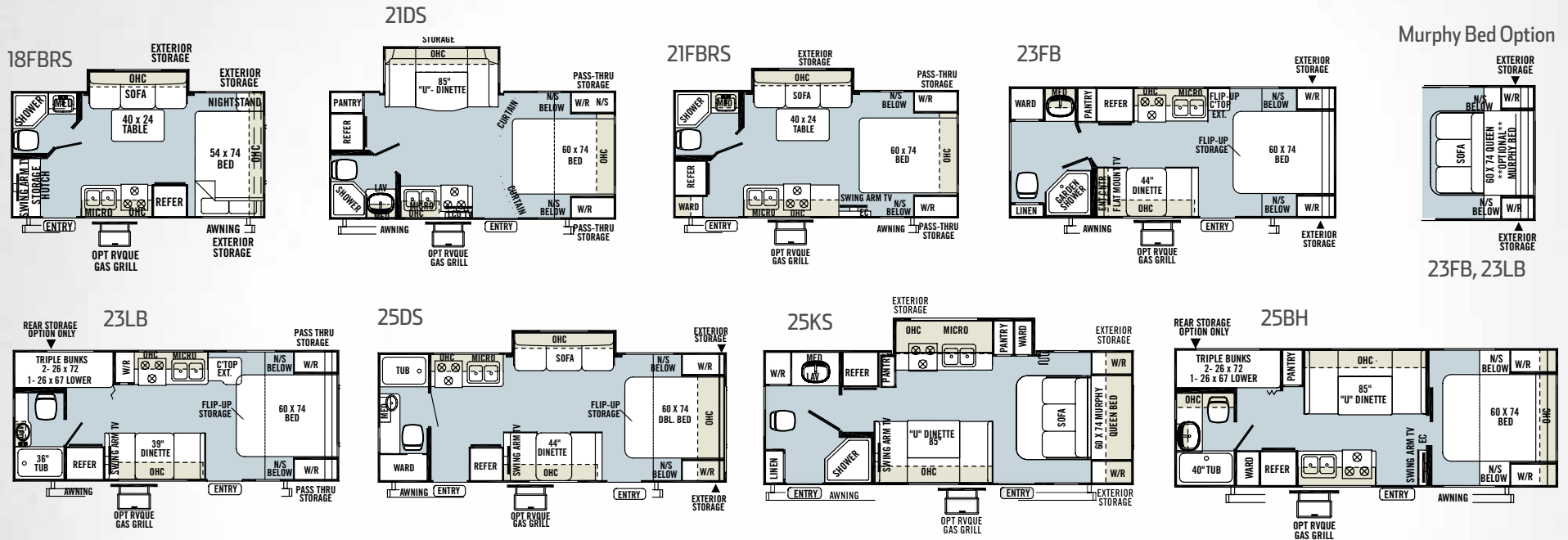


Sofa Accessible w/ Murphy Bed in Stored Position.



FLAGSTAFF

MICRO LITE SERIES



SPECIFICATIONS

MODEL	18FBRS	21DS	21FBRS	23FB	23LB	25DS	25KS	25BH
BASE/DRY UNIT WEIGHT	3476	3749	3624	3709	3630	4101	4357	4124
BASE DRY HITCH WEIGHT	250	330	369	569	356	400	548	459
BASE DRY AXLE WEIGHT	3226	3419	3255	3140	3274	3701	3809	3665
CARGO CAPACITY	1136	943	1107	1222	1088	1833	1833	1833
LENGTH	20'	21' 8"	21' 8"	23' 9"	23' 8"	25' 8"	25' 8"	25' 8"
WIDTH	96"	96"	96"	96"	96"	96"	96"	96"
HEIGHT W/O A/C	109"	113"	111"	108"	108"	109"	110"	117"
INTERIOR HEIGHT	80"	80"	80"	80"	80"	80"	80"	80"
FRESH WATER CAPACITY	36 gal	36 gal	36 gal	36 gal	36 gal	36 gal	36 gal	36 gal
GRAY WATER CAPACITY	30 gal	30 gal	30 gal	30 gal	30 gal	30 gal	30 gal	30 gal
BLACK WATER CAPACITY	30 gal	30 gal	30 gal	30 gal	30 gal	30 gal	30 gal	30 gal

Model number of any particular unit does not necessarily reflect the overall length of the unit itself. Dry weight are estimates.



FLAGSTAFF
FEATURES



CAMPING WITH FLAGSTAFF IS ALWAYS COMFORTABLE.

Flagstaff takes pride in packing the most value possible into our Super Lite, Micro Lite and Shamrock series. While coming standard with many features, you still have the flexibility to incorporate as many options as you choose to fit your camping preferences.



1



2



3



4

FLAGSTAFF
FEATURES

- 1 Power Awning with Adjustable Rain Dump (Opt.)
- 2 Wood Door & Drawer Fronts
- 3 Aluminum Wheels (Opt.)
- 4 26" & 32" LCD w/ 5.1 Dolby Speaker System with "Bluetooth" Technology. (Opt. SL: Select Models)



**FLAGSTAFF
FEATURES**

- 1** RVQ grill *(Opt.)*
- 2** Fantastic Fan *(Std. Opt)*
- 3** Water Filter *(Std. Opt)*
- 4** Heated Innerspring Mattresses *(ML/S: Std. Opt.)*
- 5** Outside Speakers *(Std. 19RB, 19RK, 19FD Opt. All Other Models)*
- 6** Heated holding tanks with 12 volt heat pads. *(Opt.)*
- 7** Outside Shower *(Std.)*
- 8** Outside Antifreeze Inlet with Easy Access to Water Pump in Storage Compartment for convenient Winterizing. *(Std.)*
- 9** Shamrock Bunk Cables — No Support Poles Needed *(Std. all Models Except w/ 23RS, 25RS)*

**FLAGSTAFF
LUXURIOUS
RESIDENTIAL FABRICS**



CHESTERFIELD



OASIS



SOLARA



CHERRY DÉCOR OPTION



HICKORY DÉCOR OPTION



**STANDARD
FLOOR COVERING**



**OPTIONAL
FLOOR COVERING**

FLAGSTAFF
**QUALITY
 CONTRUCTION**



**HIGH QUALITY
 TRAILERS WHICH ARE BUILT TO
 ENDURE.**

Quality built trailers always bring the same results: long-lasting products you can depend on to enjoy with your family year after year. These are some of our highlights.



1



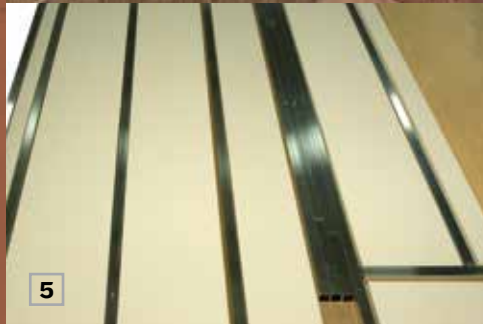
2



3



4



5



6



7

TORFLEX
 RUBBER TORSION SUSPENSION AXLES



8

FLAGSTAFF
**QUALITY
 CONTRUCTION**

- 1 Glued and screwed wood cabinetry
- 2 Aluminum dinette frames for added strength and weight savings
- 3 Extra large dinette storage drawers
- 4 Full extension metal drawer guides in the kitchen
- 5 Vacuum-bonded floor with 16" on center aluminum floor joists (Std. Super Lite, select Shamrock models)
- 6 Enclosed underbelly protects trailer components as well as increasing aerodynamics (Super Lite models only)
 - Independent wheel suspension and self-damping action
 - Rubber cushioning eliminates metal-to-metal contact.
 - Forged torsion arm for maximum strength
- 8 Aluminum Frame Construction with fiberglass exterior and deluxe graphics



FLAGSTAFF

QUALITY CONSTRUCTION

ROOF CONSTRUCTION



Vacuum-bonded radius roof with vaulted ceiling providing superior insulation and more interior height.



4" thick roof with built in insulated A/C ducts



Built strong to enable you to conveniently perform periodic roof maintenance.

WALL STRENGTH



Structurally engineered materials makes our vacuum-bonded walls some of the strongest in the industry.

VACUUM-BONDED LAMINATED CONSTRUCTION



Flagstaff is one of the few manufacturers that is a fully **6 sided vacuum-bonded trailer**. Our walls, floors, roof, fronts and backs are all built vacuum-bonded to ensure a light weight strong structural trailer.

FLAGSTAFF

SHAMROCK SERIES



THERE IS MORE TO THE
SHAMROCK
SERIES THAN MEETS THE EYE

Flagstaff has designed specific models to meet individual needs. From the front deck models that allow you to bring your ATV along, to the rear slide models that provide expandability with solid walls for the feel of a traditional trailer, the Shamrock has the model for you. It's no wonder Shamrock is the top choice for expandable trailers.



21SS Chesterfield with Hickory

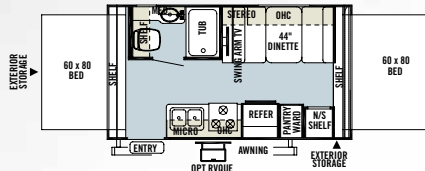
FLAGSTAFF

SHAMROCK SERIES

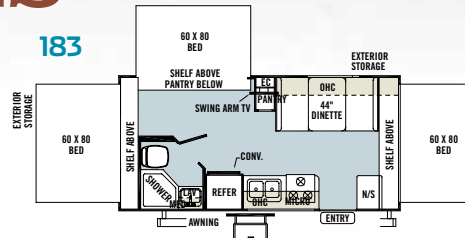


96" Front Storage Deck:
Shamrock 19SSL, 21SSL.

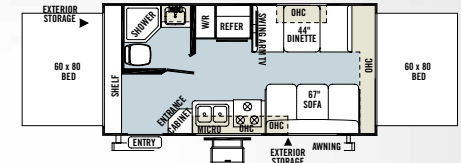
17



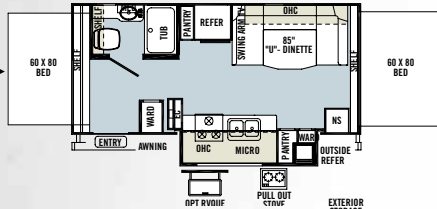
183



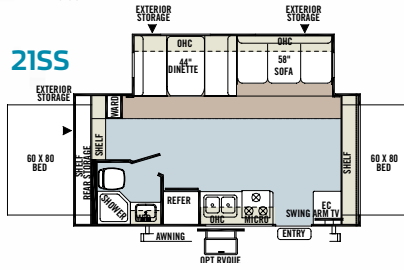
19



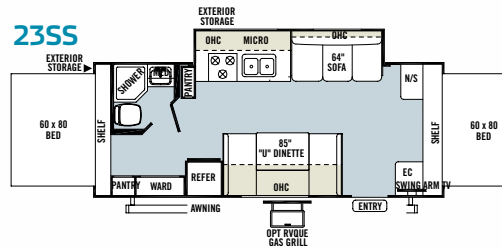
21DK



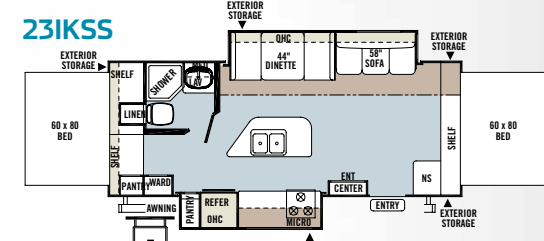
21SS



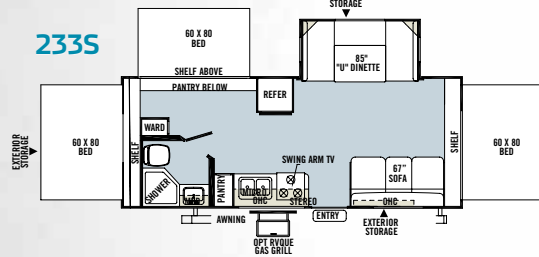
23SS



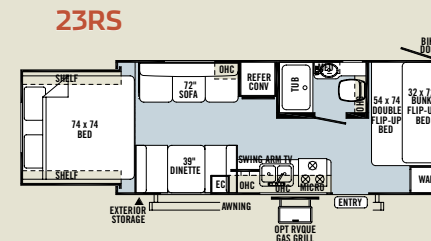
23IKSS



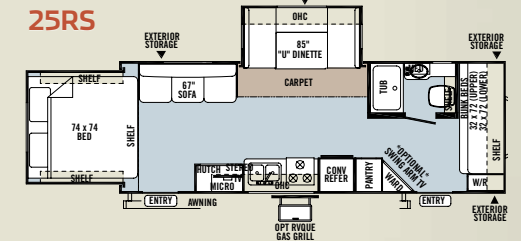
233S



23RS



25RS



REAR SLIDE
MODELS

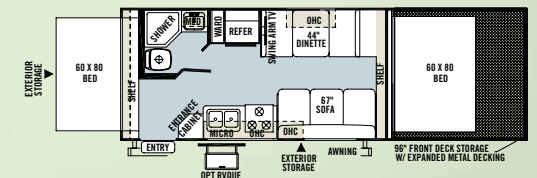
SPECIFICATIONS

MODEL	17	183	19	21DK	21SS	23IKSS	23SS	233S	23RS	25RS	19L	21SSL
BASE/DRY UNIT WEIGHT	3063	3391	3383	3638	4311	4936	4254	4351	4143	4841	4432	4883
BASE DRY HITCH WEIGHT	341	374	370	467	570	432	458	647	499	502	321	322
BASE DRY AXLE WEIGHT	2722	3017	3013	3171	3741	4504	3796	3704	3644	4339	4111	4561
CARGO CAPACITY	740	1345	1349	1191	1233	1458	1833	1833	1833	1624	2900	2401
LENGTH	18' 9"	20' 9"	20' 9"	21' 9"	21' 9"	24' 10"	24' 9"	23' 9"	23' 10"	27' 5"	30' 1"	31' 1"
TRAILER LENGTH (Open)	22' 11"	24' 9"	24' 9"	22' 4"	25' 6"	29' 2"	28' 9"	27' 9"	28' 5"	32'	33' 5"	35' 6"
WIDTH	96"	96"	96"	96"	96"	96"	96"	96"	96"	96"	96"	96"
HEIGHT W/O A/C	110"	112"	112"	120"	120"	115"	115"	114"	116"	116"	118"	120"
INTERIOR HEIGHT	78"	78"	78"	78"	78"	80"	78"	78"	78"	80"	78"	78"
FRESH WATER CAPACITY	36 gal	36 gal	36 gal	36 gal	36 gal	36 gal	36 gal	36 gal	36 gal	36 gal	36 gal	36 gal
GRAY WATER CAPACITY	30 gal	30 gal	30 gal	30 gal	30 gal	30 gal	30 gal	30 gal	30 gal	30 gal	30 gal	30 gal
BLACK WATER CAPACITY	30 gal	30 gal	30 gal	30 gal	30 gal	30 gal	30 gal	30 gal	30 gal	30 gal	30 gal	30 gal

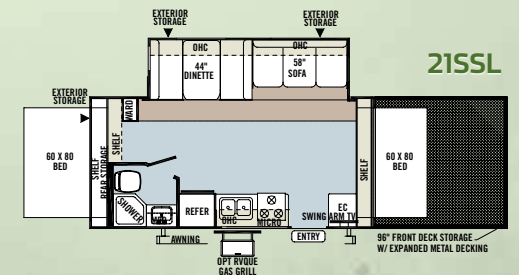
Model number of any particular unit does not necessarily reflect the overall length of the unit itself. Dry weight are estimates.

FRONT STORAGE DECK MODELS

19L



21SSL



STANDARDS & OPTIONS

Standards & Options are subject to change.

Models	SL	ML	S
INTERIOR FEATURES			
Hickory or Cherry (w/ Solid Cherry Hand Rubbed Cabinet Doors) Interior	0	0	0
Upgraded Decorative Wood Slide Out Fascia	EP	--	--
Solid Wood and Raised Panel Doors and Drawers	S	S	S
Screwed and Glued Wood Cabinetry	S	S	S
Residential Full Extension Metal Drawer Guides in Kitchen	S	S	S
Flooring: Carpet and an Engineered Mold and Mildew Resistant Floor Covering (21SS, 21SSL, 23IKSS, 23SS Only All SL Models)	S	--	S*
Engineered Mold and Mildew Resistant Floor Covering	S	S	S*
Minimum Carpet	0	--	--
Ducted Furnace (2304S Only)	S*	S	S
Floor Ducted Furnace (N/A 2304S)	S*	--	--
13,500 BTU Ducted Air (25DS, 25KS, 25BH, 21DK, 21SS, 21SSL, 23SS, 23IKSS, 23SS, 23RS, 25RS, All SL Models)	S	S*	S*
15,000 BTU A/C	0	0	0
13,500 Roof A/C (18FBRS, 21DS, 21FBRS, 23FB, 23LD, 17, 183, 19, 19L) (Opt. 19RB, 19FD, 19RD)	--	0*/S*	S*
Carbon Monoxide Detector	SO	SO	SO
12 Volt Power Plug Hook-up	S	S	S
CSA	0	0	0
Monitor Panel Switch Station	S	S	S
55 Amp Converter With Charger	S	S	S
Battery Disconnect Switch	S	S	S
LED 12 Volt Interior Lighting	S	S	S
Directional Reading Lights on Sofa Slides	S	S	S
Bunk Fan/Light Combination with Each Bed	--	--	S
Mounted 22" LCD TV (Opt. 19RB, 19FD, 19RD)	S	0*/S	S
Bedroom Mounted 22" LCD TV (Opt. All SL Models Except 23FBS, 25BH, 23IKSS, 23SS, 23SS)	0*	0*	0*

Models	SL	ML	S
26" LCD TV With 5.1 Digital Dolby Surround Sound Speaker System (N/A 23FBS)	0	--	--
32" LCD TV With 5.1 Digital Dolby Surround Sound Speaker System (Std. 27RLWS Opt. 26RBSS, 27BESS, 29SKBS, 29RLSS, 29FBSS, 29IKTS)	S*/0*	--	--
Digital AM/FM/CD/DVD w/ Remote	S	S*	S
MP3 Player Hook-Up	S	S	S
HDMI Cable to Enable TV Speakers to Play Broadcast Digital Surround Sound	0	--	--
Decorative Valances	--	S	S
Designer Valances w/ Lambrequin Arms	S	--	--
Mini Blinds	S	--	--
Night Shades	--	0	0
Day/Night Shades	0	--	--
Swivel Chairs (Std. 26RLWS Only)	S*	--	--
Serta Recliners (Std. 29RLSS Only)	S*	--	--
End Table with Attached Lamp (Std. 26RLWS, 29RLSS)	S*	--	--
Air Hide-A-Bed Sofa w/ Storage (Std. 26RLWS, 26FKWS, 27RLWS, 29RLSS, 29FBSS, 29IKTS) (Opt. 21SS/21SSL, 23IKSS)	S*	--	0*
Jack Knife Sofa (29SKBS Only)	0*	--	--
Aluminum Bed and Dinette Frames	S	S	S
44" Family Dinette (N/A 21DS, 25BH, 23FBS, 26RBSS, 27BESS, 27RLWS, 29SKBS, 21DK)	S*	S*	S*
48" X 84" Spacious King-U-Style Dinette (Std. 21DS, 25BH, 23FBS, 26RBSS, 27BESS, 27RLWS, 29SKBS, 21DK)	S*	S*	S*
Free Standing High Pressure Laminated Table with Swing Level Legs (Swing Level Legs N/A 19RB, 19FD, 19RD, 18FBRS, 21FBRS)	S	S*	S
Free Standing Table and Chairs (26RLWS, 26FKWS, 27RLSS, 29RLSS, 29FBSS, 29IKTS Only)	S*	--	--
Stainless Steel Appliances	0	0	0
Raised Refrigerator Panels	0	0	0

Models	SL	ML	S
Auto Gas/Electric Refrigerator	S	S	S
Three Burner High Output Gas Range	S	S	S
Gas Oven (Required 21DK, 23IKSS, 23SS, 25KS)	S	S	0*
Microwave	S	S	S
Solid Surface Corian Counter Tops in Kitchen	EP	--	--
Double Bowl Sink w/ Residential Style Faucet (NA 19FD)	S	S	S
Residential One-Piece Sink Cover	S	S	S
Cutting Board	S	S	S
Counter Top Extension (Available 23FBS, 26RLWS, 27RLWS, 29RLSS, 29FBSS Only)	0	--	--
Water-Pur Filtration System	SO	SO	SO
Tub Surround	S	S	S
Bathroom Skylight	S	S	S
110 DSI Gas/Electric Six Gallon "Quick Recovery" Water Heater	S	S	S
Water Heater By-Pass Kit	S	S	S
Foot Flush Toilets	S	S	S
Create-A-Breeze Three Speed Fantastic Fan with Vent Covers	SO	SO	SO
Extra Create-a-Breeze Fan	0	0	S
Murphy Bed System for Unmatched Floor Plan Flexibility (Opt. 23FB, 23LB) (Std. 23FBS, 25KS, 19RB, 19FD)	S*	0*/S*	--
Heated Mattress	0	SO	SO
Serta Upgrade Mattress All Walk Around Beds	S	--	--

EXTERIOR FEATURES

Fully Laminated Aluminum Frame (Floor, Sidewall, & Roof)	S	S	S
Insulation Factors R-7 Side Wall, R-12 Floor and R-14 Ceiling	S	S	S
Radius Roofs w/ Interior Vaulted Ceilings (N/A 19RB, 19FD, 19RD)	S	S*	S
Vinyl / Rubber Composite Roofing Membrane	S	S	S
TV Antenna w/ Cable & Satellite Hook-Up	S	S	S

SL = SUPER LITE
ML = MICRO LITE

S = SHAMROCK
S = STANDARD

SO = STANDARD OPTION
O = OPTIONAL

-- NOT AVAILABLE
OP = OPTIONAL PACKAGE

CP = CONVENIENCE PACKAGE
* = SELECTED MODELS



Models	SL	ML	S
• Laminated Fiberglass Sidewalls	S	S	S
• Laminated Tan Fiberglass Sidewalls	EP	--	--
• Electric Slide-Out (All Slide Out Models)	S	S	S
• Lower Front Diamond Plate Panel (N/A 19RB, 19FD, 19RD)	S	S*	--
• Decorative Frame Skirting	S	--	S
• Industrial Lockable Bed Latches	--	--	S
• Easy Step Assist to Access Bed Latches	--	--	S
• Bed Cable System (No Poles)	--	--	S
• Rear Ladder	0	--	--
• Power Awning With Adjustable Rain Dump	S	0	0
• Awning	--	S	S
• Awning Slide Topper	0	0	0
• Entrance / Screen Door	S	S	S
• Grab Handle Next to Entrance Door	--	S	S
• Large Assist Grab Handles	S	--	--
• Lighted Entry Stop and Scare Light	EP	--	--
• Radius Corner Windows and Doors	S	S	S
• Windows w/ Tinted Safety Glass	S	S*	S
• Tinted Bonded Frameless Windows	EP	--	--
• Storm Windows available	0	0	0
• Large Dinette Picture Window	S	S	S
• Outside Grill Prep	S	S	S
• Outside Gas Grill and Worktable	S	S	0
• Outside Speakers	S	S	S
• Outside Shower	S	S	S
• 1/2 Sliding Storage Tray (N/A 19RB, 19FD, 19RD, 23FB, Models w/ Murphy Bed) (Opt. 23FBS, 17, 183, 19, 19L, 23SS, 23IKSS,)	0	0	0
• Outside Antifreeze Stations in Storage Compartments	S	S	S
• Slam Latches on Pass Through Storage Doors	EP	--	--
• Two-20 Lb Gas Bottles	S	S	S
• Molded Bottle Cover	S	S	S
• Surface Coated Steel I-Beam Frame (N/A 19RB, 19FD, 19RD)	S	S*	S
• 96" Front Storage Deck (19L, 21SSL Only)	--	--	S*
• Power Tongue Jack	0	0	0
• Stabilizer Jacks	S	S	S

Models	SL	ML	S
• Power Stabilizer Jacks	0	--	--
• Torsion Axle, Rubber-Ryde Suspension	S	S	S
• Easy Lube Axles	S	S	S
• Radial Tires	S	S	S
• 14" Tires with Double Step	S	S	S
• Off Road Package (Includes: 15" Off Road Tires and Aluminum Wheels) (19L, 21SSL Only)	--	--	0*
• Chrome-look Wheel Covers	0	0	0
• Aluminum Wheels	0	0	0
• Spare Tire Carrier & Cover	S	S	0
• Electronically Controlled Heated Holding Tanks	0	0	0
• Enclosed Holding Tanks	S	--	--
• Black Water Flush	S	--	--

CONVENIENCE PKG. B INCLUDES:

13,500 BTU Ducted Air	SO	--	--
Mounted 22" LCD TV w/ AM/FM Stereo, CD, DVD Player			
Gas Oven			
Microwave			
110 DSI Gas/Electric Six Gallon "Quick Recovery" Water Heater			
Power Awning			
Large Assist Grab Handle			
Windows w/ Tinted Safety Glass			
Outside Grill and Worktable			
Outside Speakers			
Spare Tire Carrier & Cover			

EMERALD PACKAGE INCLUDES:

Tan Colored Fiberglass	0	--	--
Deep Tinted Frameless Bonded Windows			
Slam Latches on Storage Doors			
Exterior Step and "Scare" Light			
Solid Surface Corian Kitchen Countertop			
Upgraded Slide Fascia			

Models	SL	ML	S
OPTION PKG. G (19RB, 19FD, 19RD ONLY)			
INCLUDES:	--	SO*	--
Gas Oven			
Microwave			
110 DSI Gas/Electric Six Gallon "Quick Recovery" Water Heater			
TV Antenna w/ Cable & Satellite Hook-up			
Spare Tire Carrier & Cover			
Outside Speakers			

CONVENIENCE PKG. A (N/A 19RB, 19FD, 19RD)

INCLUDES:	--	SO*	--
13,500 BTU Roof A/C (18FBRS, 19RB, 19FD, 19RD Only)			
13,500 BTU Ducted Air (All Except 18FBRS, 19RB, 19FD, 19RD)			
Mounted 22" LCD TV w/ AM/FM Stereo, CD, DVD Player			
Microwave			
110 DSI Gas/Electric Six Gallon "Quick Recovery" Water Heater			
Awning			
Windows w/ Tinted Safety Glass			
Outside Grill and Worktable			
Outside Speakers			
Spare Tire Carrier & Cover			

CONVENIENCE PACKAGE C INCLUDES:

--	--	SO	
13,500 BTU Roof A/C (17, 183, 19, 19L)			
13,500 BTU Ducted Air (21DK, 21SS, 21SSL, 23SS, 23IKSS, 23SS, 23RS, 25RS)			
Mounted 22" LCD TV w/			
TV Antenna & Cable Hook-up			
Microwave			
110 DSI Gas/Electric Six Gallon "Quick Recovery" Water Heater			
Awning			
Windows w/ Tinted Safety Glass			
Outside Speakers			



PRE-DELIVERY INSPECTION FACILITY

20,000 square feet of quality assurance. The bare essentials for a premium product. This state-of-the-art facility gives immediate daily feedback to production for quality assurance in every unit built.



Forest River, Inc. encourages our customers to purchase their Forest River products from a local dealership whenever possible for the following reasons:

- 1) Forest River, Inc. dealers are independently owned and operated businesses so priority service and scheduling is at their discretion and is often provided to customers that purchased their unit at that dealership.
- 2) Purchasing locally allows customers to establish meaningful relationships with a dealer, enhancing the RV experience through assistance with product questions, user tips or RV regulations for your state or country, and much more!
- 3) Canadian customers must meet requirements to bring an RV purchased out of the country to their home. These requirements may involve additional inspections and certifications, taxes and fees. Your local Canadian Dealer is a professional at meeting these requirements.
- 4) Scheduling timely warranty repairs and adjustments through a local dealership provides far greater flexibility and convenience to you, the customer!

It is the goal of Forest River, Inc. that all of our RV owners fully enjoy the RV experience and that customer satisfaction meets or exceeds their expectations!

24/7 EMERGENCY ROADSIDE ASSISTANCE

For a worry-free ownership experience

Forest River includes one

year of Coach-Net RV Technical & Roadside Assistance with each RV purchase. Whether new to the RV lifestyle or an experienced RV enthusiast, Forest River owners have 24/7 access to technical, operational and emergency road service coverage throughout the US & Canada.

Coach-Net's fast, dependable service is just a phone call away.

Coach-Net®

RV Technical & Roadside Assistance



FLAGSTAFF

WARRANTY

For details on Flagstaff's complete warranty program, see your Flagstaff dealer. When it comes to backing products with the same quality and commitment it has when it begins the manufacturing process, the only name you have to remember when you're looking for a recreational vehicle is Flagstaff. Flagstaff offers the following additional limited warranties to the original purchasers. Consult written warranty for details.

1. Twelve-year vinyl roof warranty, 2. Two-year fiberglass warranty, 3. Five-year axle warranty, 4. Five-year tent warranty, 5. One-year bumper to bumper warranty, 6. Available second-year warranty

YOUR FLAGSTAFF DEALER

201 West Elm Millersburg, IN 46543 | www.forestriverinc.com/Flagstaff
574.642.2640



Learn More

Scan this barcode using a QR Reader on your smart phone to learn more about Forest River.



A Berkshire Hathaway company.

All specifications contained herein are based on the latest product information at time of printing. Forest River reserves the right to make changes in colors, materials, equipment and specifications at any time without notice and assumes no responsibility for any errors in this brochure. Litho. U.S.A. 09.25.2012