



Wildwood **LODGE GRAND LODGE** DLX

Wildwood **LODGE GRAND LODGE**
DLX



THE QUALITY YOU EXPECT. THE LUXURY YOU DESERVE.

go wild





Wildwood
DLX

DESTINATION TRAILER, 39FDEN SHOWN IN SOAPSTONE DECOR
optional free standing dinette and La-Z-Boy recliner



39FDEN & 426-2B

FAMILY ROOM

An inviting camper for your family's long term stays. The 426-2B (pictured) is designed with a private bunk room, 84" interior heights with 6'2" slide outs, and a U-shaped dinette!

HOME SWEET HOME

Wildwood DLX comes outfitted with residential raised panel cabinetry, sliding glass entry doors, and an 18 cu. ft. refrigerator to make you feel right at home!

DESTINATION TRAILER 426-2B SHOWN IN TUSCAN DECOR optional TV



DESTINATION TRAILER 426-2B BUNKROOM



DESTINATION TRAILER 426-2B BEDROOM





LODGE

DESTINATION TRAILER 394FKDS SHOWN IN LA-Z-BOY COGNAC LEATHER DECOR



394FKDS

THE GREAT ESCAPE

Get the night's sleep you dream of on our Serta Dreamscape mattress with comfort flex bed frame (Lodge and Grand Lodge)!

STAY A WHILE

Pack for extended stays with the added wardrobe and drawer space provided in our bedrooms!

RESIDENTIAL

The 394FKDS floorplan design will accommodate your friends and family with its huge kitchen and spacious living area!



DESTINATION TRAILER 394FKDS BEDROOM



DESTINATION TRAILER 394FKDS KITCHEN



GRAND LODGE

DESTINATION TRAILER 408REDS SHOWN IN LA-Z-BOY SLATE DECOR
optional TV



408REDS

ENJOYABLE

The 408REDS (pictured) displays our La-Z-Boy Slate sofa with optional La-Z-Boy recliners. The La-Z-Boy furniture options provided in our Wildwood DLX and Lodge line of campers brings residential and quality furniture right to your camper!

UPGRADES

The Wildwood Grand Lodge upgrades your camper to 8' interior heights, cathedral slide outs with skylights in main slide room, and three ceiling fans throughout the coach!



DESTINATION TRAILER 408REDS KITCHEN

DLX STANDARDS AND OPTIONS, FEATURES AND FABRICS

COMFORT AND CONVENIENCE

84" interior height
 Black framed tinted safety glass windows
 Powered self supporting slide rooms
 Pleated night shades
 Triple sealed slide outs
 Water heater by-pass
 16-gallon per hour quick recovery DSI water heater
 Large pass thru storage (per floorplan)
 Ducted Dometic® 13,500 BTU central air conditioner w/ quick cool feature
 In-floor ducted heat w/ 35K BTU furnace
 Stain resistant carpet with padding
 Flush-floor slide rooms
 Systems monitor panel
 6' 2" tall slide rooms
 Ultra lube axles
 Solid wood drawer fronts with ball bearing drawer guides
 2 outside speakers
 Beauflor™ Durabac flooring w/ 7 yr. limited warranty

KITCHEN

Extra large overhead cabinets
 Raised panel overhead cabinet doors
 18.5 cu. ft. residential refrigerator with ice maker
 12-volt power range hood w/ light
 Microwave w/ carousel
 Acrylic 60/40 residential style kitchen sink
 Built in knife holder behind stove
 3 burner Piezo ignition range oven
 Pull out sprayer faucet at kitchen sink
 Kitchen waste basket
 Pantry with shelves

LIVING ROOM

Swivel rocker chair (per floorplan)
 Jensen™ DVD/CD/AM/FM stereo w/ mp3 hook-up
 Cathedral ceiling w/ ceiling fan
 Surround sound w/ TV hook-up
 Digital TV antenna w/ booster
 Cable and satellite ready
 Extra large picture window at dinette
 Extra large dinette for more comfortable dining and sleeping
 Decorative lights in slide-out

BEDROOM

Serta Bradley mattress
 Fitted bedspreads and headboard
 Lift-up beds w/ gas struts
 Cable TV hook-up
 Stain resistant carpet w/ padding
 Solid privacy doors

BATHROOM

Built-in wood medicine cabinet and mirror
 Ceiling light w/ convenient wall switch
 Foot flush toilet(s)
 ABS tub or shower w/ one-piece

EXTERIOR

Smooth fiberglass radius baggage doors w/ thumb pulls and holdbacks
 Cold crack and mildew resistant vinyl patio awning
 Diamond plate rock guard
 Patio door w/ screen
 Steel framed 30" smooth fiberglass radius entry door
 15" radial tires
 Entry assist handle
 2-30 lb. LP tanks w/ automatic change over & EZ access LP cover
 City water fill

CONSTRUCTION

10" Extruded I-beam frame
 Cambered chassis
 Fresh water tank
 2" x 3" floor joists 12" on center
 5/8" 5-ply tongue and groove plywood floor decking
 2" wall studs maximum 16" on center
 5" bowed truss roof rafters
 3/8" walk-on roof decking
 R-7 insulation

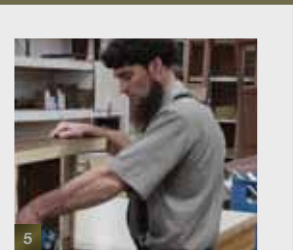
SECURITY AND SAFETY

Smoke detector
 Fire extinguisher
 Carbon monoxide detector
 LP gas leak detector
 Amber porch light w/ interior switch
 Screen door w/ safety latch
 GFI receptacles and covered patio outlet
 Welded heavy duty safety chains
 Hitch light
 Lockable fiberglass radius baggage doors
 ANSI 119.5
 Certified to meet all national highway traffic safety administration specs.

WILDWOOD OPTIONS

Gel coat fiberglass exterior
 10-gallon gas/electric DSI water heater
 Skylight over tub
 Air hide-a-bed sofa
 Outside kitchen (402QBQ only)
 Free standing dinette w/ 4 chairs
 Outside shower

Contact your Wildwood DLX dealer for a complete list of options.



TUSCAN DECOR



SLATE DECOR



COGNAC LEATHER DECOR



SOAPSTONE DECOR



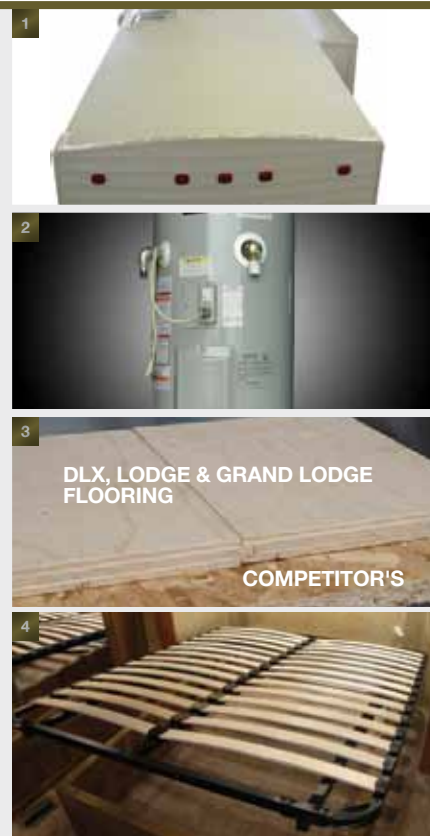
INTERIOR FEATURES

1: Serta Bradley mattress 2: Residential 18.5 cu. ft. refrigerator with ice maker 3: Exterior marine grade speaker 4: Cloth shades 5: Rest assured your unit is built with pride and integrity by our dedicated team of craftsman



Form follows function. At Wildwood Lodge, your satisfaction is serious business and it shows. Our commitment to your satisfaction includes:

- 1: A one piece seamless roof with 12 year warranty
- 2: 20 gallon water heater (Lodge and Grand Lodge)
- 3: The floor in Wildwood is 5/8" tongue and groove plywood. Most of our competitors use OSB board which is not as durable as our real wood floor.
- 4: Comfort Flex bed frame (Lodge and Grand Lodge)



CONSTRUCTION THAT'S BUILT TO LAST

Our floorplans offer your family an inviting campsite home! With spacious interior heights, deep slides and accommodating dinette seating, Wildwood values the meaning of family room! Adequate storage throughout the interior and exterior of your coach allow for you to pack comfortably. The desired features on the inside of our units are equally matched by the well-built construction! Wildwood units are constructed to last for many years of enjoyment and memories. Take a look inside the Wildwood and see why it is one of the most **DEPENDABLE** RV's on the road today!

- | | | | |
|---|---|---|---|
| A | Radius triple entry steps | K | 2" wall studs 16" on center |
| B | 102" exterior width for increased living space (96"DLX) | L | 2"x 3" floor joists 12" on center |
| C | Tinted windows | M | 15K BTU A/C (13.5K on DLX) |
| D | Hitch light | N | Seamless one piece roof (12 yr. warranty) |
| E | Standard patio door | O | 3/8" roof decking (full walk-on roof) |
| F | 15" radial tires (16" w/ optional fiberglass exterior) | P | R-7 fiberglass insulation throughout |
| G | 12" I-beam powder coated plywood flooring | Q | Dual bottle cover w/ easy access |
| H | 5/8" tongue and groove plywood flooring | R | 5" truss roof rafters 16" on center |
| I | Carpet w/ padding | S | Scare light |
| J | Fender skirt | T | 024 aluminum siding (fiberglass opt.) |
| | | U | 84" interior height (DLX, Lodge) 96" in Grand Lodge |
| | | V | Triple seal system for slideouts |

LODGE / GRAND LODGE STANDARDS AND OPTIONS AND FEATURES

COMFORT AND CONVENIENCE

102" exterior width for increased living space
 84" interior height
 Beauflor™ w/ 7 yr. limited warranty
 Frost proof garden hose spigot (off door side)
 Black framed tinted glass windows
 WaterPur™ whole house water filtration system
 Water heater by-pass
 Wired and braced for second A/C
 Pleated night shades
 20-gallon electric water heater
 Ducted Dometic® 15,000 BTU central air conditioner w/ quick cool feature
 In-floor ducted heat w/ 40K BTU furnace
 Shaw stain resistant carpet w/ padding
 Flush-floor hydraulic slide rooms w/ manual override
 Systems monitor panel
 50 amp electrical service and 65 amp 12-volt converter
 Solid hardwood drawer fronts

KITCHEN

Free standing dinette with 4 chairs
 Deluxe window package at dinette
 Extra large raised panel overhead cabinets
 Full extension ball bearing drawer guides
 20" freestanding 4 burner gas range w/ oven (black)
 18.5 cu. ft. residential electric refrigerator w/ icemaker (black)
 Microwave w/ carousel and range hood (black)
 Hidden storage beneath dinette seat cushions
 Undermount stonecast 60/40 residential style sink
 Pull out sprayer faucet
 Pantry with shelves
 Self edge countertops throughout

LIVING ROOM

Swivel rocker chair(s) (per floorplan)
 Surround sound TV hook-up
 Jensen™ DVD/CD/AM/FM stereo w/ mp3 hook-up
 4 cube speakers and sub woofer
 Digital TV antenna w/ booster

Cable and satellite door side hookup
 Glass sliding patio door w/ vertical blinds and screen door
 Coordinating wallpaper border
 Ceiling fan w/ wall switch

BEDROOM

Neo-Angle shower w/ glass door
 Built-in wood medicine cabinet and mirror
 Ceiling light w/ convenient wall switch
 Full extension ball bearing drawer guides
 ABS shower w/ one-piece surround
 12" 10-blade Fantastic Bath Fan™
 Toothbrush holder and towel ring

BATHROOM

Built-in wood medicine cabinet and mirror
 Ceiling light w/ convenient wall switch
 Foot flush toilet(s)
 ABS tub or shower w/ one-piece

EXTERIOR

Smooth fiberglass radius baggage doors
 Cold Crack and mildew resistant vinyl awing
 15" radial tires (per floorplan)
 30 lb. double LP tanks w/ automatic change over
 EZ access LP tank cover
 City water fill w/ brass valve
 Swing out assist handle

CONSTRUCTION

12" forged I-beam frame
 Cambered chassis
 Seamless holding tanks

Color coded water lines
 2" x 3" floor joists 12" on center
 5/8" 5-ply tongue and groove plywood floor decking
 2" wall studs maximum 16" on center
 5" bowed truss roof rafters
 3/8" walk-on roof decking
 Seamless one-piece roof w/ 12 year warranty
 Triple sealed slide outs
 R-7 insulation throughout (floors, walls, ceilings, and slide-outs)

SECURITY AND SAFETY

Smoke detector
 Fire extinguisher
 Carbon monoxide detector
 LP gas leak detector
 Door latch w/ integral dead bolt lock
 Lighted main entry step w/ interior switch
 Amber porch light w/ interior switch
 Main entry doorside flood light
 GFI receptacles and covered patio outlet
 Welded heavy duty safety chains
 Hitch light
 Lockable fiberglass radius baggage doors
 ANSI 119.5
 Certified to meet all National Highway Traffic Safety Administration Specifications

POPULAR OPTIONS

Gelcoat fiberglass exterior
 Skylight over tub
 Garden tub w/ glass door (per floorplan)

La-Z-Boy® living room furniture (a Forest River exclusive)
 Air hide-a-bed sofa
 Detachable hitch
 Outside shower
 10-gallon gas/electric DSI water heater (IPO 20 gal electric)

GRAND LODGE UPGRADES OVERLODGE

96" (8') interior height
 Cathedral slide (main slide room)
 Knife holder and spice rack behind oven
 Under mount bathroom sink
 Fluorescent lighting in kitchen
 3 ceiling paddle fans w/ light kits (110v)
 110v lighting in coach area ceiling
 Skylights in main slide above dinette w/ shades
 Window above main patio door
 Stone facade around fireplace
 Residential porch light
 Air hide-a-bed in main slide
 Lighting in kitchen soffit
 Residential master bed comforter
 Decorative pillows
 Washer/dryer prep (standard 408FLFB, optional 408REDS)

OPTIONAL EQUIPMENT

La-Z-Boy recliners
 La-Z-Boy sofa w/ hide-a-bed (must chose Slate or Cognac Leather décor)
 Detachable hitch
 Gel coat exterior upgrade



TUSCAN DECOR



SLATE DECOR



COGNAC LEATHER DECOR



SOAPSTONE DECOR



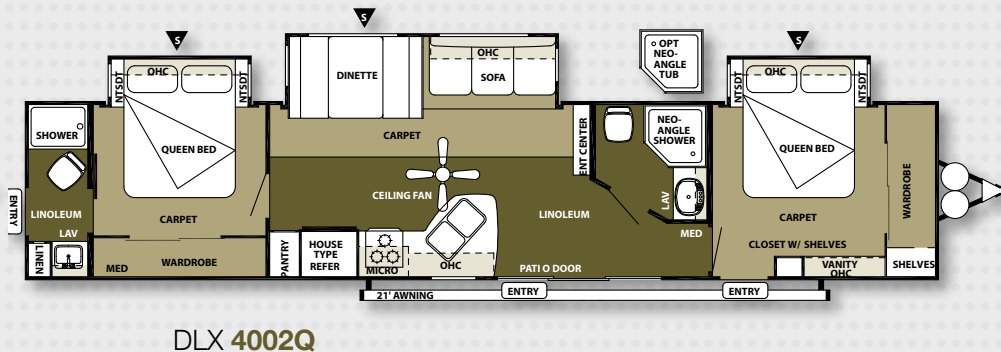
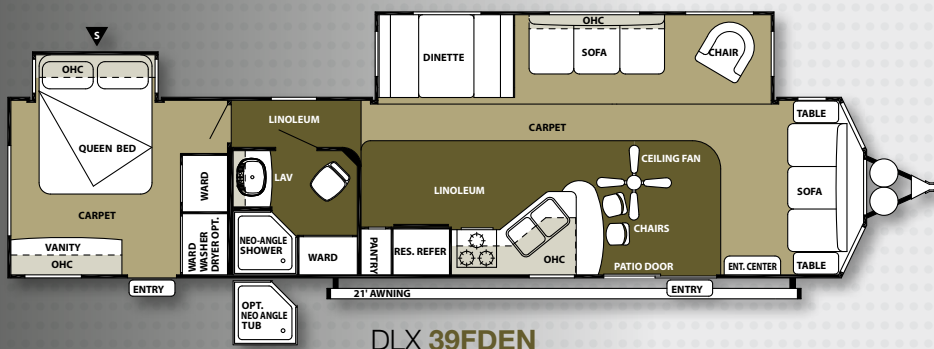
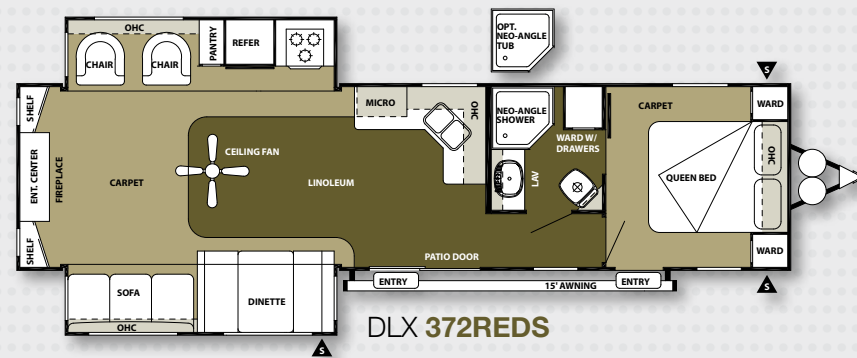
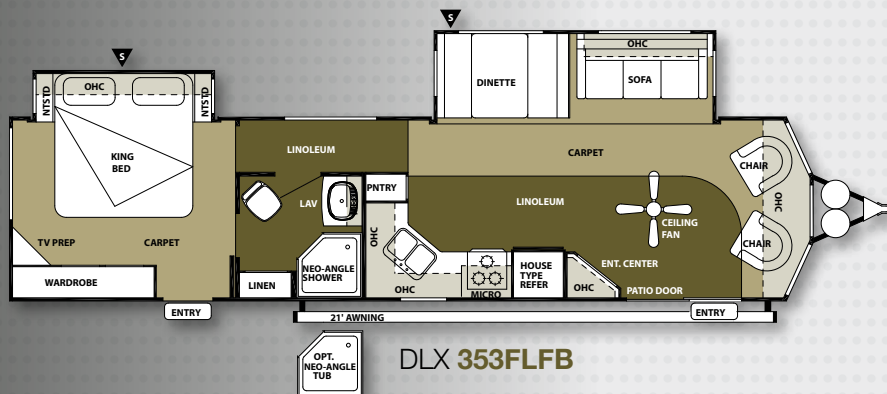
LODGE / GRAND LODGE FEATURES



INTERIOR FEATURES

1: Beauflor (7 yr. warranty) 2: Night shades 3: Foot flush toilet 4: Comfort flex bed frame 5: Water filter
6: Spray faucet 7: Fireplace (per model) 8: Ceiling fan 9: Silverware drawer 10: Shaw carpet 11: Free standing range
12: Outside spigot 13: Patio door (std. all models) 14: Fantastic fan

WILDWOOD DLX FLOORPLANS



SPECIFICATIONS

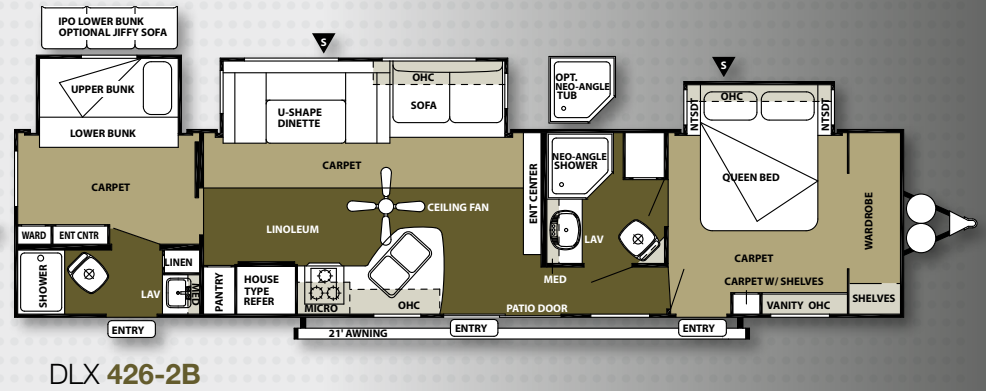
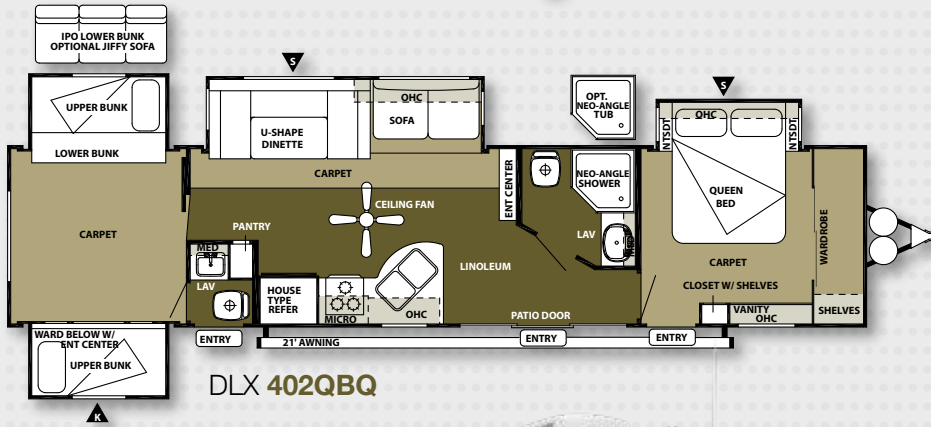
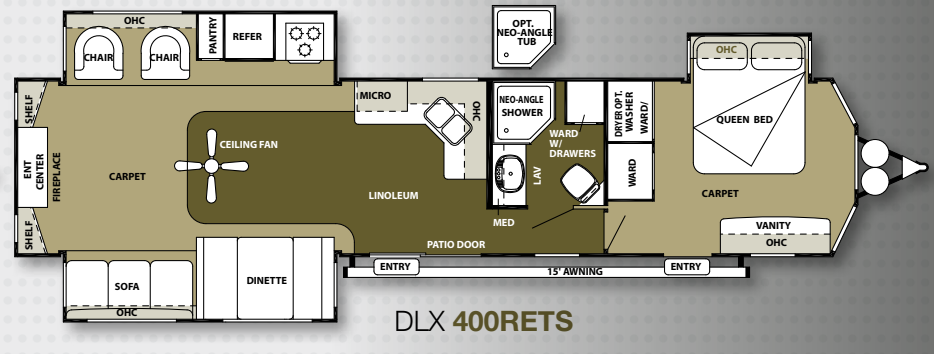
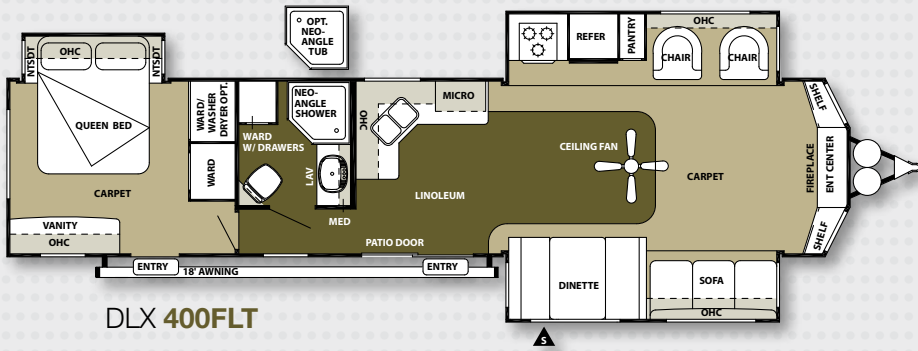
	353FLFB	372REDS	39FDEN	4002Q	400FLT	400RETS	402QBQ	426-2B
hitch weight lb.	1290	1005	1362	1260	1705	1375	1035	1365
axle weight	7330	8035	8363	8980	8185	8685	9550	8810
dry ship weight	8620	9040	9725	10240	9890	10060	10585	10175
CCC (cargo capacity)	2770	2066	1738	1121	1916	1416	2390	1290
ext. length	38' 6"	38' 7"	40' 10"	43' 5"	40' 9"	40' 9"	40' 8"	40' 5"
ext. height	12' 3"	12' 3"	12' 3"	12' 3"	12' 3"	12' 3"	12' 3"	12' 3"
int. height	84"	84"	84"	84"	84"	84"	84"	84"
fresh water cap. gal.	39	42	39	39	39	42	29	39
black water cap. gal.	43	43	38	75	43	43	75	71
grey water cap. gal.	43	43	38	75	43	43	75	71
tire size in.	15"	15"	15"	15"	15"	15"	16"	15"
awing size ft.	21'	15'	21'	21"	18'	15'	21'	21"

storage

OHC overhead cabinet
 WARD wardrobe
 MICRO microwave
 LAV bathroom sink

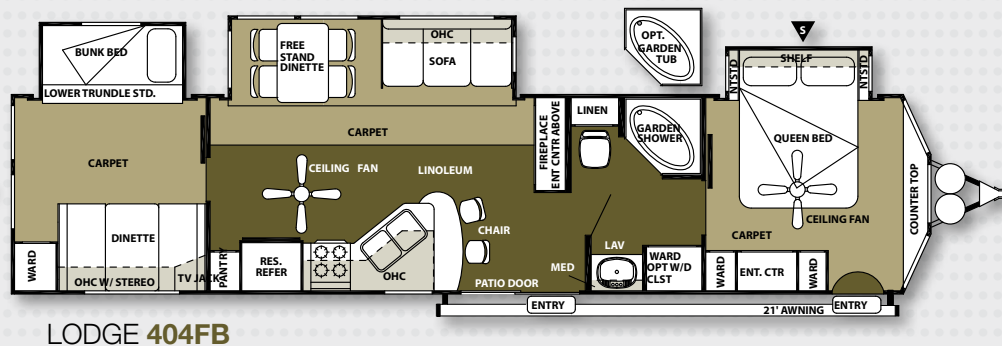
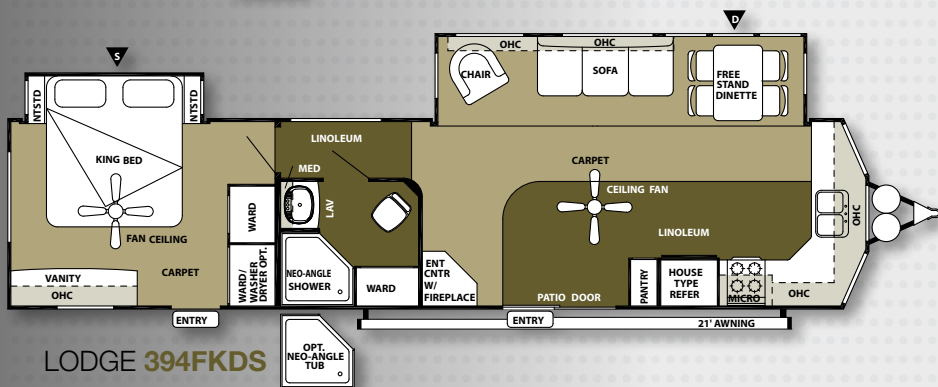
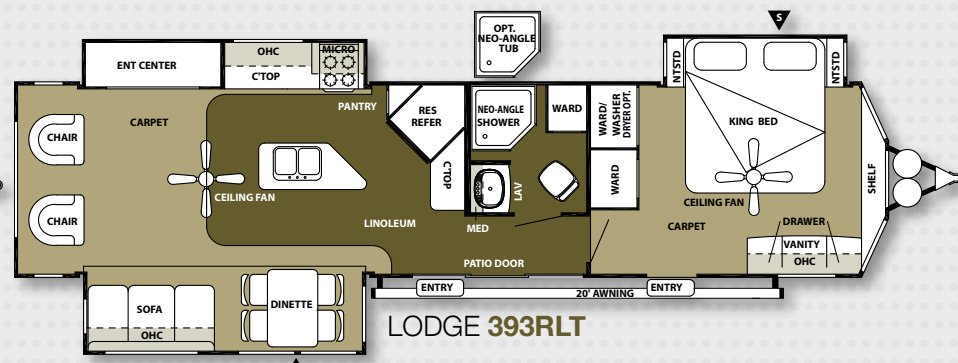
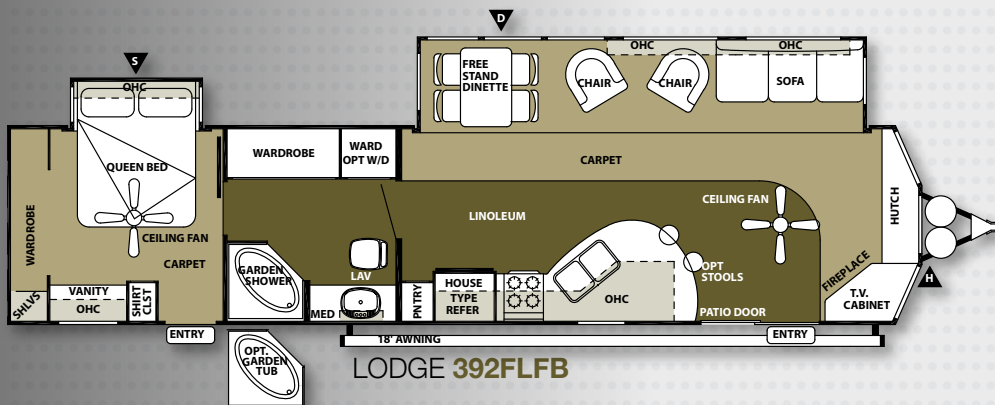
Pillows and blankets shown on bunks are for demonstration purposes only and do not come with your new coach.

WILDWOOD DLX FLOORPLANS






Wildwood DLX





LODGE FLOORPLANS



SPECIFICATIONS

	392FLFB	393RLT	394FKDS	404FB
hitch weight lb.	1500	1615	1555	1385
axle weight	8700	9045	8520	9315
dry ship weight	10200	10660	10075	10700
CCC cargo capacity	1400	2896	1581	2626
ext. length	40'	40' 5"	40' 10"	40' 11"
ext. height	12' 3"	12' 3"	12' 3"	12' 3"
int. height	84"	84"	84"	84"
fresh water cap. gal.	39	39	39	39
black water cap. gal.	27	40	43	40
grey water cap. gal.	38	80	67	70
tire size in.	15"	16"	15"	16"
awning size ft.	18'	20'	21'	21'

-  deluxe window package
-  storage
-  hidden LP bottles

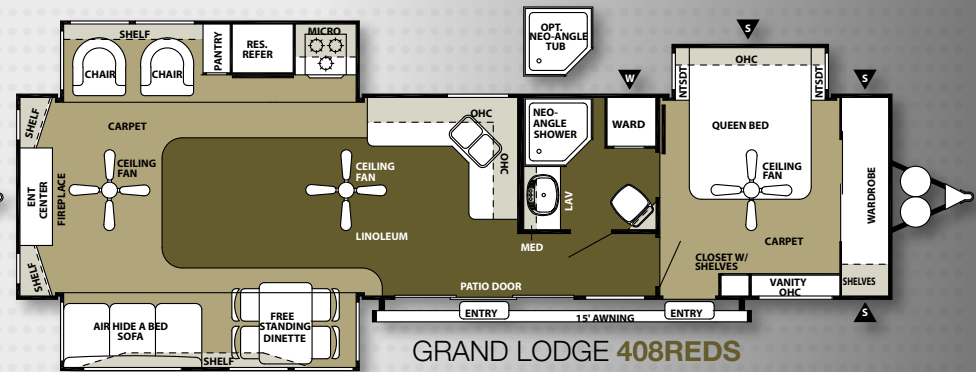
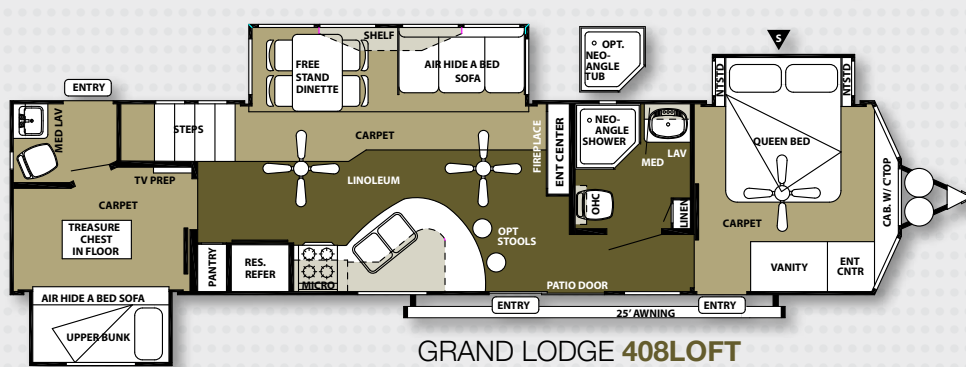
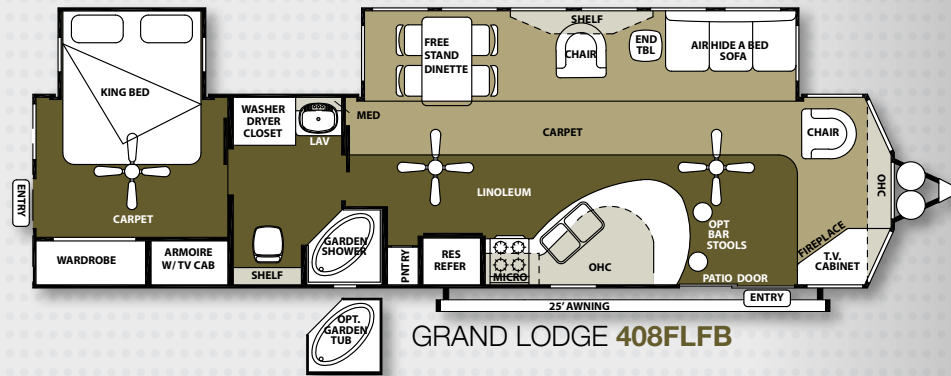
-  OHC overhead cabinet
-  WARD wardrobe
-  MICRO microwave
-  LAV bathroom sink

Pillows and blankets shown on bunks are for demonstration purposes only and do not come with your new coach.



LODGE

GRAND LODGE FLOORPLANS



SPECIFICATIONS

	408FLFB	408LOFT	408REDS
hitch weight lb.	1790	1515	1295
axle weight	9405	10685	9990
dry ship weight	11195	12200	11285
CCC (cargo capacity)	2536	1255	1950
ext. length	40' 5"	41' 6"	39' 9"
ext. height	13' 3"	13' 3"	13' 3"
int. height	96"	96"	96"
fresh water cap. gal.	39	39	39
black water cap. gal.	40	64	40
grey water cap. gal.	40	86	40
tire size in.	16"	16"	16"
awing size ft.	25'	25'	15'

- ▼ opt. washer dryer
- prep does not include cab.
- storage

- OHC overhead cabinet
- WARD wardrobe
- MICRO microwave
- LAV bathroom sink

Pillows and blankets shown on bunks are for demonstration purposes only and do not come with your new coach.



GRAND LODGE

Wildwood **LODGE GRAND LODGE** DLX

THE QUALITY YOU EXPECT, THE LUXURY YOU DESERVE.



EXCELLENT CRAFTSMANSHIP

Only the finest attention to detail goes into each Wildwood. Our skilled craftsman have many years of experience building beautifully finished cabinetry. The solid nature of our well designed woodwork is another reason why Wildwood is the best built RV on the road.



Forest River, Inc. encourages our customers to purchase their Forest River products whenever possible for the following reasons:

It is the goal of Forest River, Inc. that all of our RV owners fully enjoy the RV experience and that customer satisfaction meets or exceeds their expectations!

- 1) Forest River, Inc. dealers are independently owned and operated businesses so priority service and scheduling is at their discretion and is often provided to customers that purchased their unit at that dealership.
- 2) Purchasing locally allows customers to establish meaningful relationships with a dealer, enhancing the RV experience through assistance with product questions, user tips or RV regulations for your state or country, and much more!
- 3) Canadian customers must meet requirements to bring an RV purchased out of the country to their home. These requirements may involve additional inspections and certifications, taxes and fees. Your local Canadian Dealer is a professional at meeting these requirements.
- 4) Scheduling timely warranty repairs and adjustments through a local dealership provides far greater flexibility and convenience to you, the customer!



PRE-DELIVERY INSPECTION FACILITY

20,000 square feet of quality assurance. The bare essentials for a premium product. This state-of-the-art facility gives immediate daily feedback to production for quality assurance in every unit built.

YOUR LODGE SERIES DEALER

24/7 EMERGENCY ROADSIDE ASSISTANCE

For a worry-free ownership experience Forest River includes one

year of Coach-Net RV Technical & Roadside Assistance with each RV purchase. Whether new to the RV lifestyle or an experienced RV enthusiast, Forest River owners have 24/7 access to technical, operational and emergency road service coverage throughout the US & Canada. Coach-Net's fast, dependable service is just a phone call away.

Coach-Net[®]
RV Technical & Roadside Assistance

FREE MEMBERSHIP
to Forest River Owners' Group

www.forestriverfrog.com



Learn More

Scan this barcode using a QR Reader on your smart phone to learn more about Forest River.



A Berkshire Hathaway company.

Forest River, Inc.
55470 C.R. 1
Elkhart, IN 46515
(574) 533-5934
www.forestriverinc.com
www.forestriveraccessories.com