

Outback

www.keystonerv.com/Outback

Keystone Super-Lite



SUPER-LITE

SUPER-LITE TRAVEL TRAILERS



Outback

Keystone Super-Lite

- A.** Oversized cabinets and drawers increases the storage in the Outback kitchen to levels not seen in most light weights.
- B.** Outback Command Center keeps all unit controls in one easily accessible location.
- C.** The Outback vaulted ceiling adds 4" of interior height



www.keystonerv.com/Outback





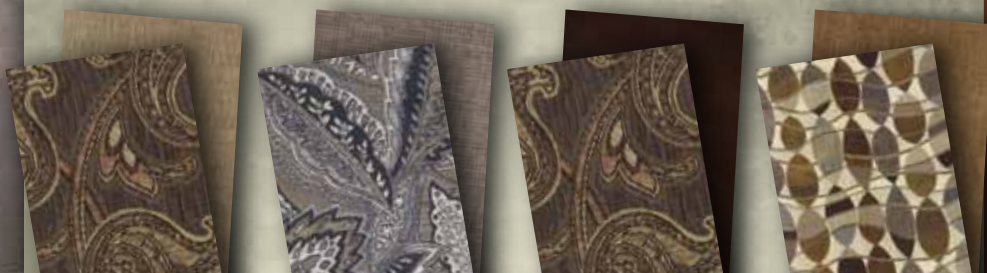
DECOR Options

TRUFFLE

MOONLIGHT

TEAK

SUMMIT



KARGOROO

by Keystone

WHAT TO DO WITH A Kargoroo?



Enjoy great outdoor cooking with family and friends on our outdoor kitchen (312BH, 300RB, 323BH models only).



Max Storage offers storage no other brands provide. Perfect for tools, hoses, firewood, etc...



The power tongue jacks allow you to adjust your trailers hitch height with the push of a button.



DURABLE Construction

ROOF

1. Seamless One-Piece EPDM Rubber Roof
2. 3/8" Fully Walkable Wood Decking
3. R-14 Blanket Insulation
4. 5" Radius, Galvanized Steel Roof Trusses
5. Full Length Drip Rail

SIDEWALL

6. Gel-Coated Fiberglass Exterior
7. 1/8" Luan Wall Backing
8. R-7 Solid Block Foam Insulation
9. 1 1/2" Box Welded Aluminum Frame Walls
10. Interior Decorative Wall Board
11. Gel Coat Molded Fiberglass Front Cap

FLOOR

12. Residential Grade Stain Resistant Carpet & Linoleum
13. Carpet Pad
14. Double Layer Luan Decking w/ Staggered Seams
15. R-10 Block Foam Insulation
16. Welded Aluminum Floor Joists
17. Bottom Layer Luan Decking
18. Darco Vapor Barrier Wrap
19. One Piece, Polypropylene Enclosed and Heated Underbelly
20. In Floor Residential Ducted Heat

CHASSIS

21. 6" Powder Coated Steel I-Beam Frame (8" frame models - 277RL and larger)
22. Leaf Spring Suspension System
23. EZ Lube Axles with 10" Electric Brakes
24. 15" Radial Tires
25. 3-Step Entry Mounted to I-Beam Frame
26. Step Light



Every Outback comes standard with JT Strong Arm Stabilizers, which greatly reduces trailer movement while in use.



Our heated and enclosed underbelly helps extend the camping season.



Slam Latch Doors provide that security you desire for your belongings.

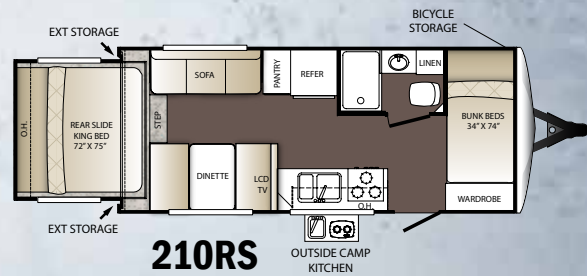


Floor lighting offers safe and convenient night time lighting.

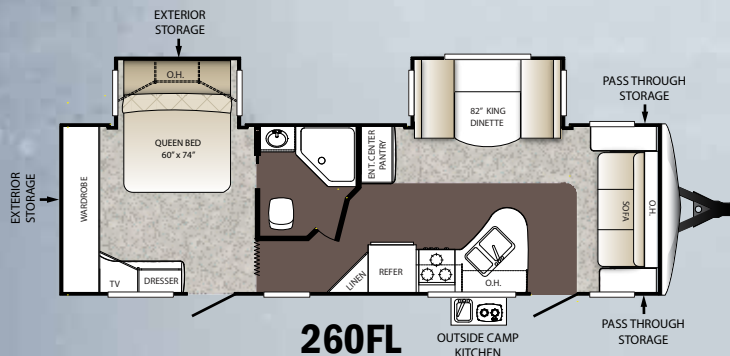
Outback

Keystone Super-Lite

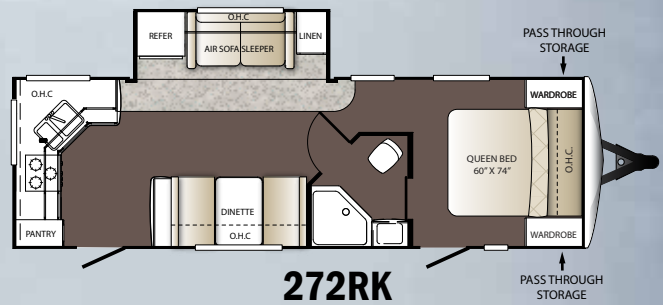
www.keystonerv.com/Outback



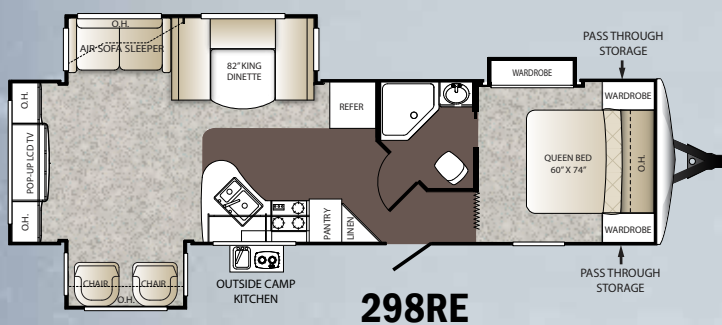
210RS



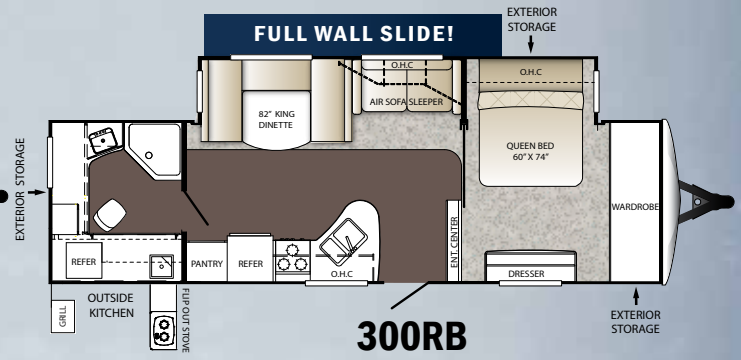
260FL



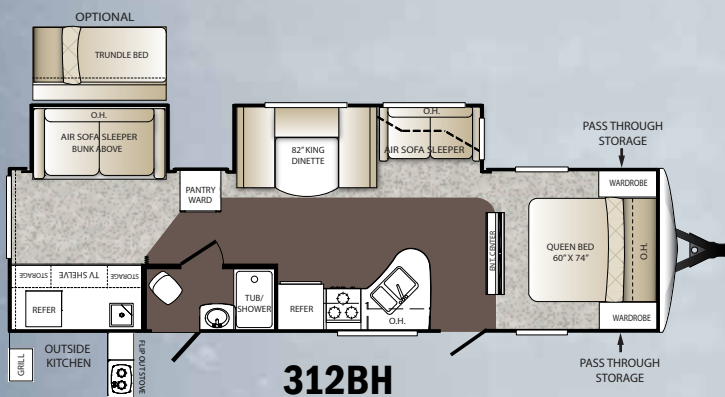
272RK



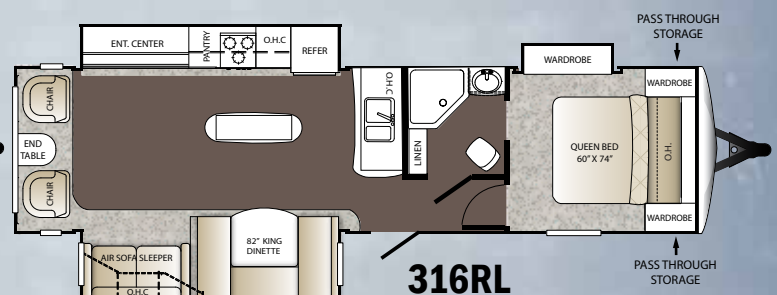
298RE



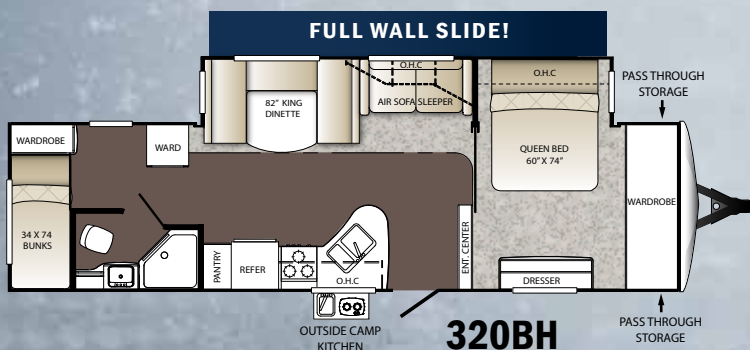
300RB



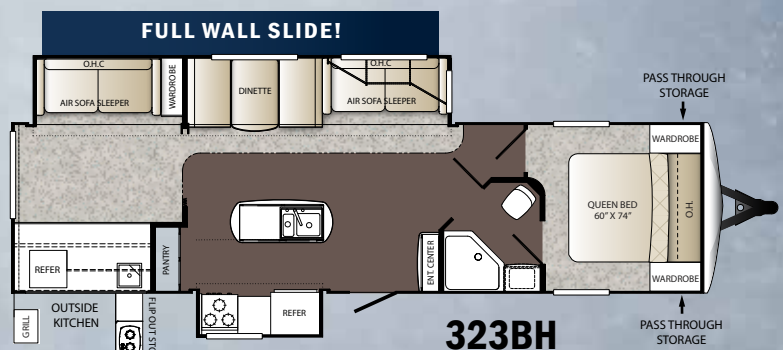
312BH



316RL

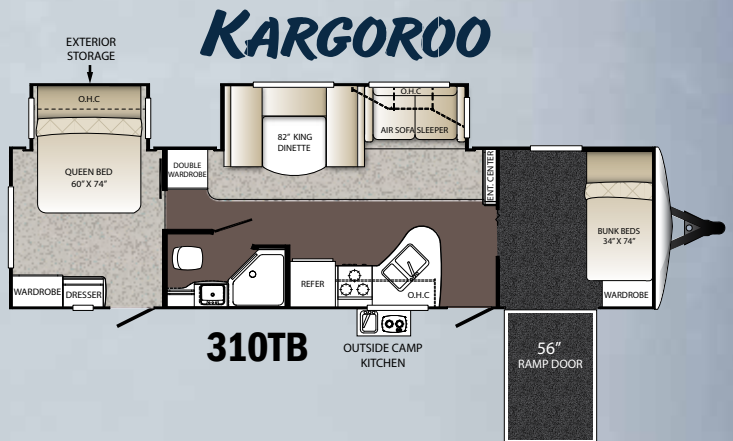
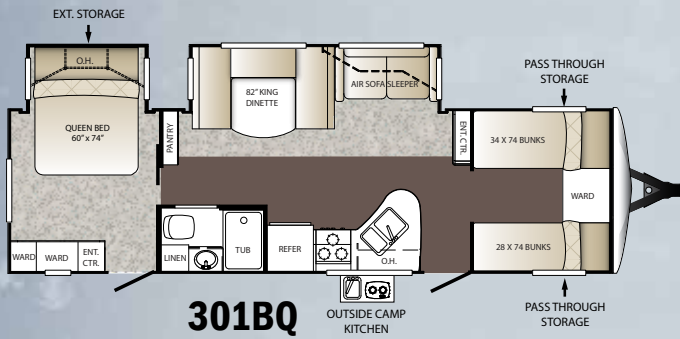
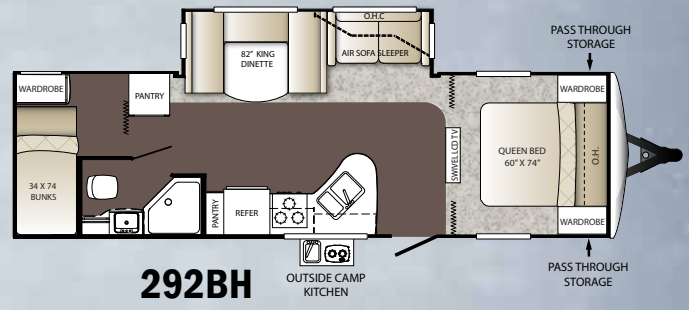
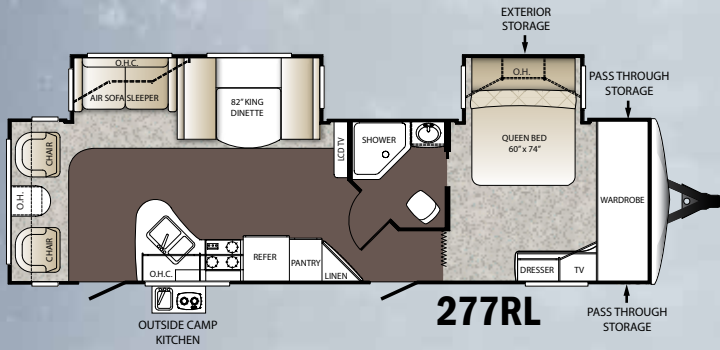
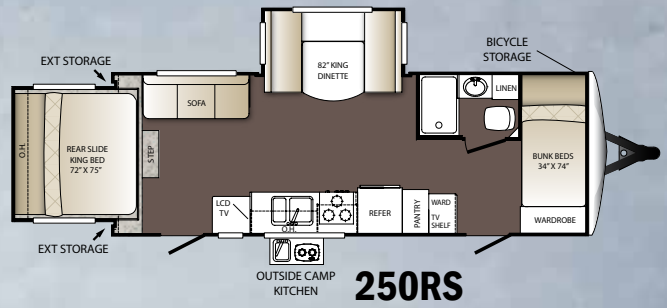
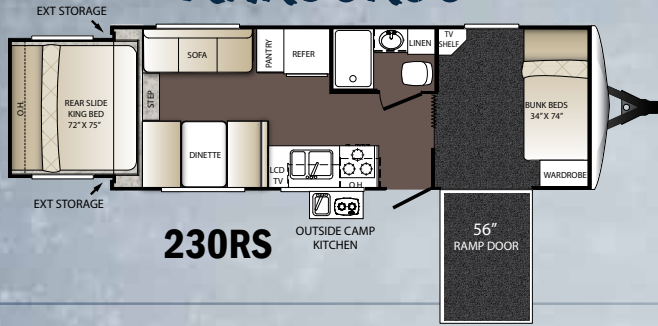


320BH



323BH

KARGOROO



WEIGHTS and Measurements

	210RS	230RS	250RS	260FL	272RK	277RL	292BH	298RE	300RB	301BQ	310TB	312BH	316RL	320BH	323BH
SHIPPING WEIGHT	4909	5354	5915	6641	5976	7410	6559	7443	7420	7210	7350	7597	7495	7600	7885
CARRYING CAPACITY	2641	2196	1635	1559	1824	1190	1641	1557	1580	1790	1650	1403	1505	1400	1115
HITCH WEIGHT	550	590	640	820	685	875	850	795	995	760	785	765	835	1005	905
EXTERIOR LENGTH	22' 10"	27' 0"	27' 6"	31' 9"	30' 4"	34' 10"	32' 9"	35' 2"	33' 8"	33' 6"	35' 6"	35' 5"	35' 6"	35' 6"	36'
EXTERIOR WIDTH	96"	96"	96"	96"	TBD	96"	96"	96"	96"	96"	96"	96"	96"	96"	96"
EXT. HEIGHT - A/C TOP	10' 11"	10' 11"	10' 11"	10' 11"	10' 11"	10' 11"	10' 11"	10' 11"	10' 11"	10' 11"	10' 11"	10' 11"	10' 11"	10' 11"	10' 11"
FRESH WATER (GAL.)	43	43	43	43	43	43	43	43	43	43	43	43	43	43	43
WASTE WATER (GAL.)	30	30	30	30	30	30	30	30	30	30	30	30	30	30	30
GRAY WATER (GAL.)	30	30	30	30	60	60	60	60	60	60	60	60	30	60	95
LP CAPACITY (LBS.)	60	60	60	60	60	60	60	60	60	60	60	60	60	60	60
AWNING	14'	19'	19'	19'	20'	19'	19'	18'	19'	19'	16'	18'	12'	20'	13'

STANDARDS

Living Area

- Dinette cup holders
- Upgraded furniture package
- Outback command center
- Deluxe walnut and ash cabinetry
- King U-shape dinette, with 42" slide out drawer (most models)
- 36" flush floor slides
- Large panoramic windows
- Pre-drilled and screwed cabinetry
- Custom designed box valance with lambrequins
- Linoleum flooring
- Large wood side drawers with steel guides
- Water soil, stain resistant fabrics
- Large overhead cabinets
- Residential air bed sleeper sofa with storage drawer (most models)*
- 24" HDTV*
- 32" HDTV (298, 300, 312, 320 & 323 only)
- 40" HDTV (316 only)
- Pleated shades*
- Decorative wall lights*
- Vaulted ceiling
- Floor lights (2)

Kitchen

- Deep single basin sink with 3" drains
- Trash can storage*
- Two door 6 cu. ft. refrigerator (most models)
- High-rise faucet
- Utensil tray
- 3 burner range with oven*
- Microwave
- Upgraded laminate countertops

Bedroom

- Deluxe innerspring mattress
- TV hook-up
- Jalousie windows for maximum ventilation
- Residential bedspread
- Deluxe headboard
- His and her lights
- Bedroom speakers
- 2 Full length wardrobes
- Recessed cubby storage w/110 volt outlets (most models)

Bathroom

- Power roof vent
- Skylight over tub
- Porcelain foot flush toilet
- Tub surround*
- Garden shower (260, 272, 277, 292, 298, 300, 310, 320, 323)
- Deluxe medicine cabinet
- Large linen closet (most models)

Appliances

- AM/FM/CD stereo with DVD player and MP3 hookup (N/A 210, 230, 250)
- Two door 6 cu. ft. refrigerator (8 cu. ft. in 316)
- 3 burner range with oven*
- Six gallon gas/electric DSI water heater by pass with 16.2 gallons per hour "quick recovery"*
- 13,500 BTU AC wall thermostat
- 30,000 BTU furnace
- Microwave

Exterior Standards

- Molded fiberglass front cap
- Black framed tinted jalousie safety glass windows
- Black tank flush
- Assist entry grab handle
- Extended drip caps and full length drip rail
- Two security lights (one on each side)*
- Porch light
- Hitch light
- Step light
- Weather encapsulated body trim
- Exterior 120V receptacle
- Heated enclosed underbelly including tanks and valves
- LP tank cover
- Automotive style fender skirts
- Double welded dual battery brackets
- Exterior TV mount with cable hook up (N/A 298RE, 300RB, 316RL, 320BH)
- Exterior speakers
- Easy lube axles
- Outside camp kitchen*
- Exterior quick connect LP hook-up
- Stabilizer Jacks (4)
- LED Hitch lights
- Satellite ready
- Slam latch baggage doors
- Braced for rear ladder
- Max storage compartment (tool box)
- Power tongue jack
- JT strong arm jack stabilizers

Walls - Construction

- Welded aluminum walls with R7 insulation
- Solid block foam insulation

Roof

- 5" Radius, vaulted galvanized steel, tapered trusses on 16" centers
- 3/8" roof decking
- One-piece EPMD rubber roof
- R14 blanket insulation

Floor

- 2" welded aluminum laminated floor
- R10 block foam insulation
- Wrapped vapor barrier
- Polypropylene enclosed heated underbelly encloses tanks and valves

Chassis

- Leaf spring equalizing suspension system
- Powder coated I-beam
- EZ lube axles
- 10"- electric brakes
- 15" radial tires*
- 15" spare tire, carrier & cover*
- Aluminum rims*

Utilities

- 55-amp converter
- 30 lbs. LP bottles with auto changeover
- TV antenna with booster, cable TV
- 30-amp shore power line
- LP leak detector
- Smoke detector
- Carbon monoxide detector*
- Fire extinguisher
- Tinted safety glass windows
- Break-away switch
- Safety chains
- Manual slide backup on all electric slide outs
- 12 Volt battery disconnect

OPTIONS*

- Designer Package
- Comfort Package
- Carbon monoxide detector
- Tub surround
- Outside camp kitchen
- RVIA
- Radial Tires
- 15" spare tire, carrier, and cover
- 6 gal. gas/electric DSI water heater by pass with 16.2 quick recovery
- Stabilizer jacks (4)
- 2 Security lights at each side
- Oven
- Air bed sofa sleeper
- HDTV campsite theatre (most models)
- Aluminum rims
- Power king rear slide (210, 230, 250)
- Power awnings
- Trundle bed (312 only)
- Freestanding table (260, 277, 298, 300, 316RL - Standard)
- 50 amp service, wired and braced for second A/C (260FL and larger)

Outback Designer Package*

- Wall border
- Cloth shower curtain (most models)
- Oil rubbed bronze coat hooks (most models)
- Utensil rack
- Innerspring mattress
- Bedspread
- LP cover
- Raised panel refrigerator
- Pleated shades
- Decorative wall lights
- Trash can

Outback Comfort Package*

- 13,500 BTU ducted AC
- TV antenna/cable
- AM/FM/CD stereo with bluetooth
- Microwave
- Stor-mor dinette drawers (most models)
- Entry handle
- High low dinette (most models)

Outback Luxury Package*

- Fiberglass front cap
- LED hitch lights
- Deluxe graphic package
- Outback switch command center
- 12V battery disconnect
- Upgraded furniture package

* Denotes STD Build Options

Outback

Keystone Super-Lite

www.keystonerv.com/Outback



www.keystonerv.com

2642 Hackberry Drive
PO Box 2000
Goshen, IN 46527-2000
(574) 535-2100



Download the Tag app at
<http://gettag.mobi> and scan this Tag.

YOUR Local DEALER IS:

NOVEMBER 2012



Go RVing
Life's A Trip!

Product information is as accurate as possible at the date of publication of this brochure. Features, floor plans, and specifications are subject to change without notice. Please also consult Keystone's web site at keystonerv.com for more current product information and specifications. Tow Vehicle Disclaimer. CAUTION: Owners of Keystone recreational vehicles are solely responsible for the selection and proper use of tow vehicles. All customers should consult with a motor vehicle manufacturer or their dealer concerning the purchase and use of suitable tow vehicles for Keystone products. Keystone disclaims any liability or damages suffered as a result of the selection, operation, use or misuse of a tow vehicle. KEYSTONE'S LIMITED WARRANTY DOES NOT COVER DAMAGE TO THE RECREATIONAL VEHICLE OR THE TOW VEHICLE AS A RESULT OF THE SELECTION, OPERATION, USE OR MISUSE OF THE TOW VEHICLE. 11/2012