

# PUMA

by Palomino



Travel Trailers • Toy Haulers • Fifth Wheels • Park Trailers



**PUMA** by Palomino  
Travel Trailers • Toy Haulers • Fifth Wheels • Park Trailers



## Travel Trailers

Whatever your travel lifestyle, there's an easy to tow Puma Travel Trailer that fits your family and friends. 19 Puma Travel Trailer floorplan configurations have been designed with convenient features that help make the most of leisure living – including a variety of kids' bunk room models. Satellite and cable TV hook-up is standard on all models for easy access to entertainment.



**MODEL 30 FBSS**  
Puma offers a variety of sleeping accommodations including bunk rooms, queen bedrooms and convertible dinettes.



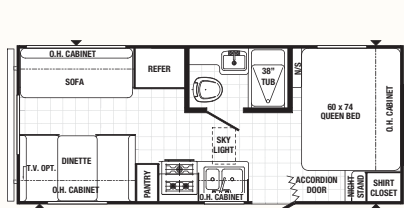
# PUMA

by Palomino

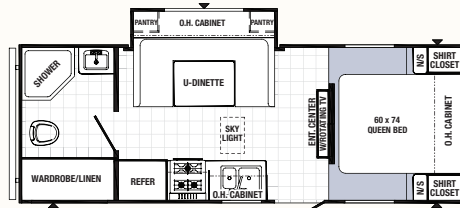
**MODEL 30 FBSS** This dinette has handy under seat storage that is also accessible from outside the coach. Shown in Mocha Decor with American Beech glazed cabinetry.



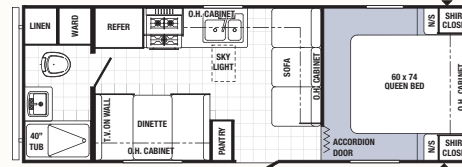
# Travel Trailers



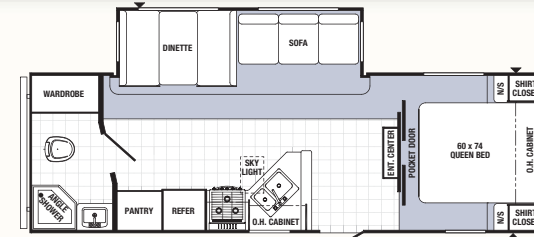
**19 RL**



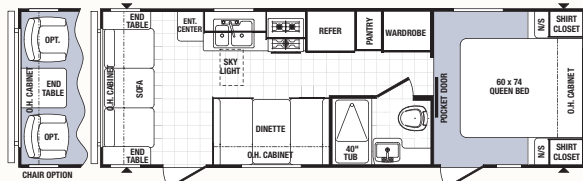
**22 RB**



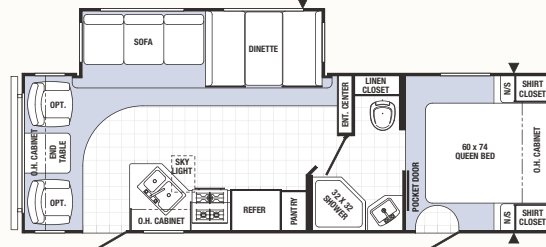
**23 FB**



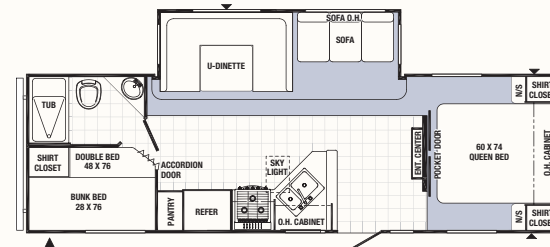
**25 RBSS**



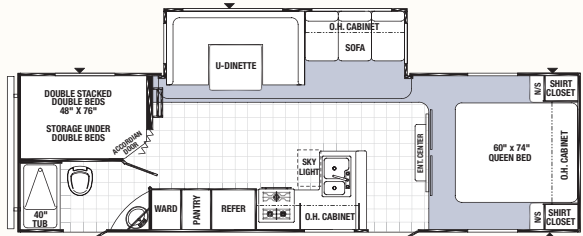
**25 RS**



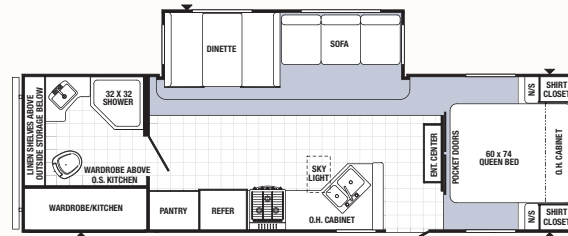
**26 RLSS**



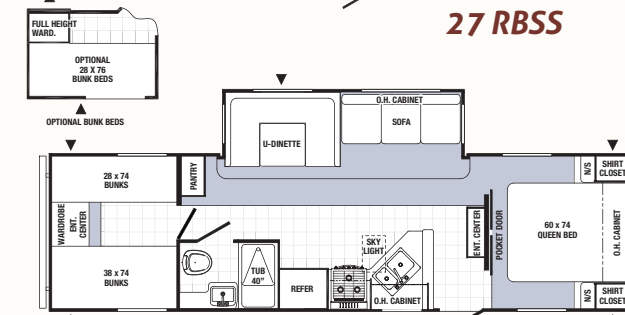
**27 RBSS**



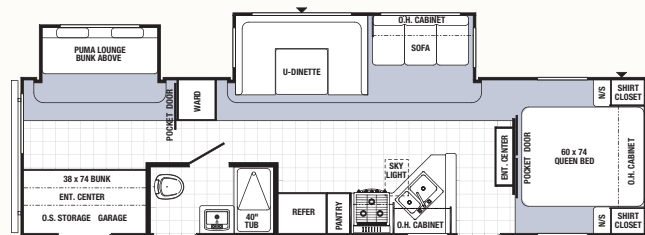
**28 DSBS**



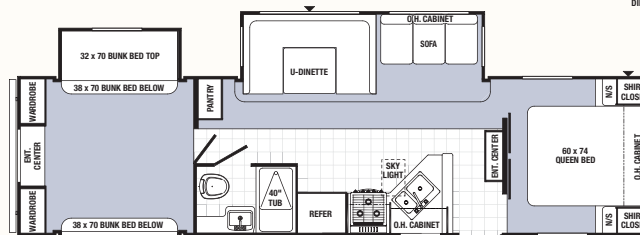
**28 RBSS**



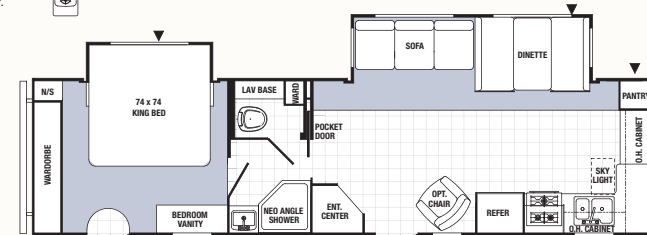
**30 DBSS**



**31 BHSS**



**31 DBTS**



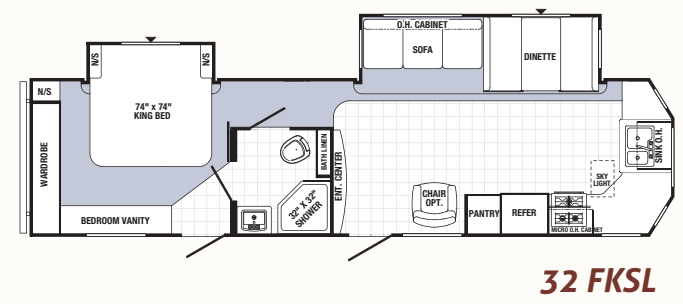
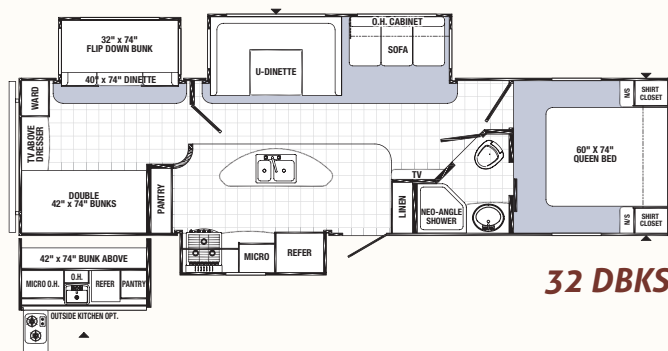
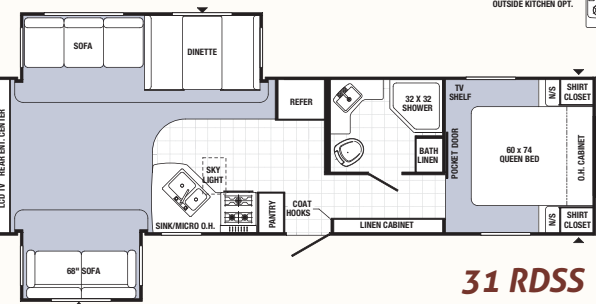
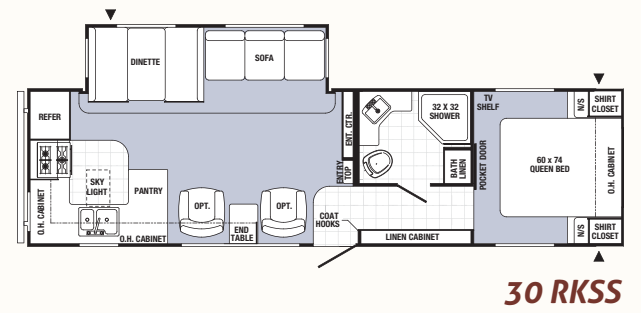
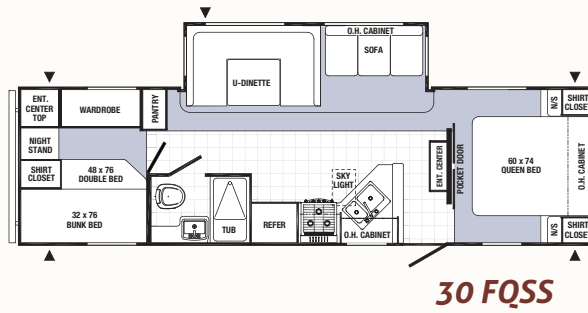
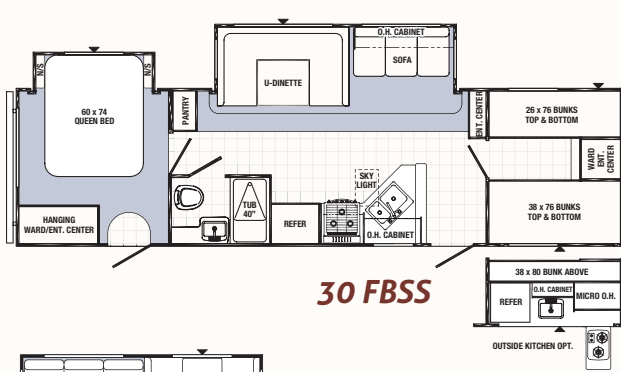
**31 FKBS**



# PUMA

by Palomino

Travel Trailers	19-RL	22-RB	23-FB	25-RBSS	25-RS	26-RLSS	27-RBSS	28-DSBS	28-RBSS	30-DBSS	30-FBSS	30-FQSS	30-RKSS	31-BHSS	31-DBTS	31-FKBS	31-RDSS	32-DBKS	32-FKSL
Hitch Dry Weight (lbs.)	446	460	673	615	600	680	821	858	790	843	1155	800	977	890	879	1,020	623	758	1410
Dry Axle Weight (lbs.)	3802	4679	3985	5542	4430	5939	5667	5965	6206	5832	6975	5870	5977	6812	7258	7064	6990	7895	6652
Total Dry Weight (lbs.)	4248	5139	4658	6157	5030	6619	6488	6823	6996	6675	8130	6670	6670	7702	8137	8084	7613	8703	8062
Carrying Capacity (lbs.)	2735	2271	2552	3220	2532	2811	3095	2700	3143	2395	3125	2865	2780	3310	2852	3058	3120	2215	3698
GVWR (lbs.)	7446	7460	7673	9415	7600	9480	9621	9636	9750	9588	11315	9736	9827	11050	11039	11180	10783	10918	11810
Tire Size	14"	15"	14"	15"	14"	15"	15"	15"	15"	15"	15"	15"	15"	15"	15"	15"	15"	15"	15"
Interior Height	80"	80"	80"	80"	80"	80"	80"	80"	80"	80"	80"	80"	80"	80"	80"	80"	80"	80"	80"
Exterior Height w/AC	10'5"	10'5"	10'5"	10'5"	10'5"	10'5"	11'1"	11'1"	11'1"	11'1"	11'1"	11'1"	11'1"	11'1"	11'1"	11'1"	11'1"	11'1"	11'1"
Exterior Width	96"	96"	96"	96"	96"	96"	96"	96"	96"	96"	96"	96"	96"	96"	96"	96"	96"	96"	96"
Overall Length	23'0"	26'6"	26'10"	29'6"	28'0"	31'0"	31'3"	32'1"	31'8"	33'6"	34'9"	32'9"	32'9"	35'4"	35'8"	35'3"	34'6"	36'1"	36'2"
Fresh Water Capacity (gal.)	51	51	51	51	51	51	51	51	51	51	51	51	51	51	51	51	51	51	51
Grey Water Capacity (gal.)	42	42	42	42	42	42	84	84	42	42	84	42	84	42	42	84	42	42	74
Black Water Capacity (gal.)	42	32	42	32	42	42	42	32	42	42	42	42	42	32	42	32	42	42	42
Awning Size	15'	11'	18'	21'	20'	21'	21'	17'	16'	18'	21'	18'	18'	21'	18'	21'	19'	13'	20'





# Fifth Wheels

## MODEL 276 RLSS

is shown with optional American Beech glazed raised panel cabinets.



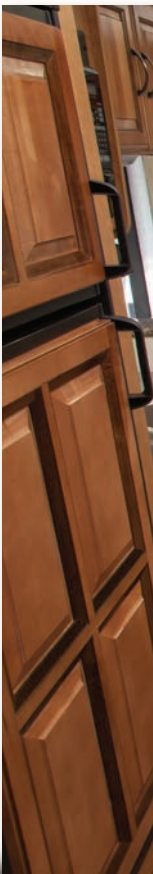
**MODEL 276 RLSS** This 60" x 74" queen bed has storage underneath and twin shirt wardrobes. Shown in Pesto Decor with American Beech glazed cabinetry.

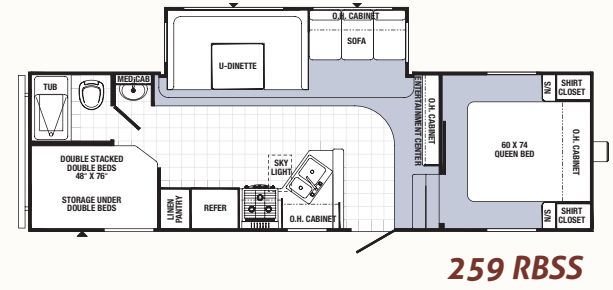
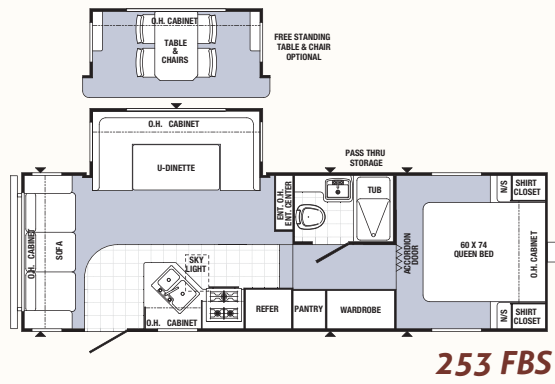
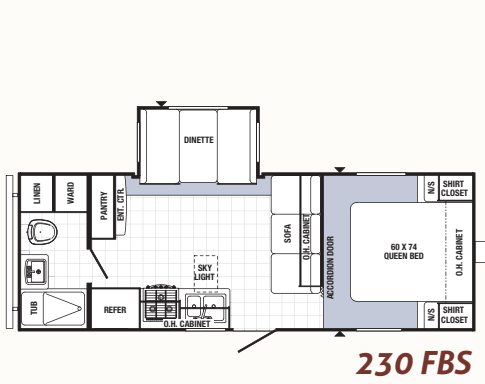


Puma offers six Fifth Wheel floor plans. All models feature oil rubbed bronze hardware and are loaded with storage. Interiors have residential style kitchens with deep sinks, high rise faucets and Beauflor® flooring. Choose a home theater surround sound system for enhanced entertainment.

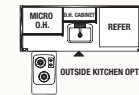
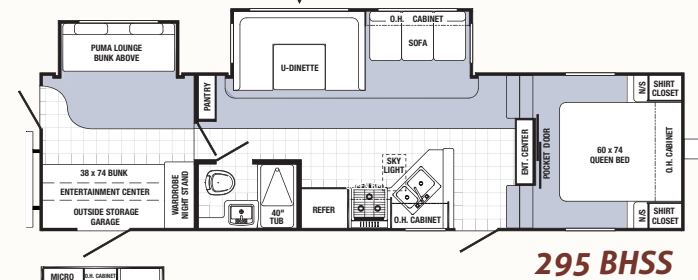
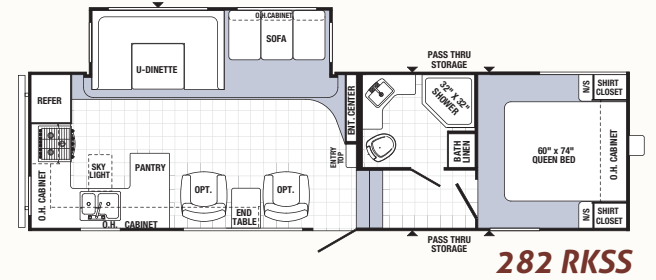
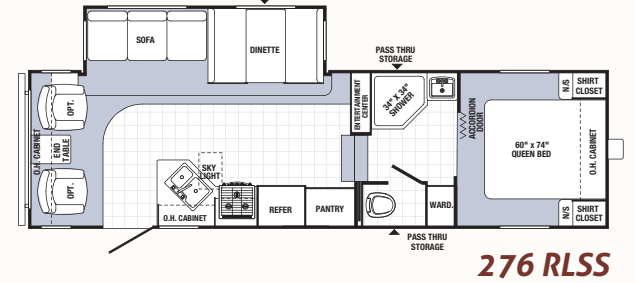
Models	230-FBS	253-FBS	259-RBSS	276-RLSS	282-RKSS	295-BHSS
Hitch Dry Weight (lbs.)	1107	1026	1427	1456	1001	1073
Dry Axle Weight (lbs.)	4663	5884	5374	5995	6729	6796
Total Dry Weight (lbs.)	5770	6910	6801	7451	7730	7869
Carrying Capacity (lbs.)	1874	2947	3392	2663	2392	3314
GVMR (lbs.)	11186	9827	10227	10273	10146	11176
Tire Size	15"	15"	15"	15"	15"	15"
Interior Height	80"	80"	80"	80"	80"	80"
Exterior Height w/AC	12'2"	12'2"	12'4"	12'4"	12'4"	12'4"
Exterior Width	96"	96"	96"	96"	96"	96"
Overall Length	24'5"	27'0"	29'4"	30'2"	31'0"	33'7"
Fresh Water Capacity (gal.)	51	51	51	51	51	51
Grey Water Capacity (gal.)	42	84	84	84	84	42
Black Water Capacity (gal.)	42	32	32	32	32	32
Awning Size	14'	16'	13'	15'	15'	18'

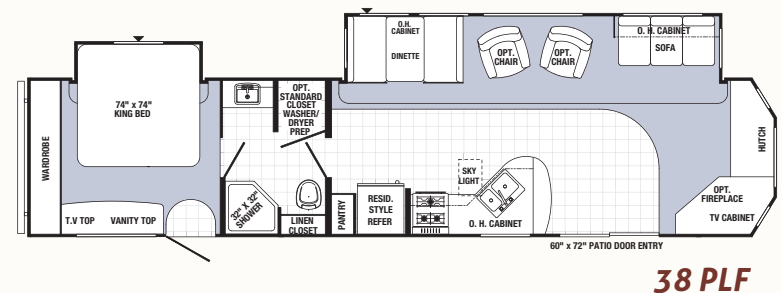
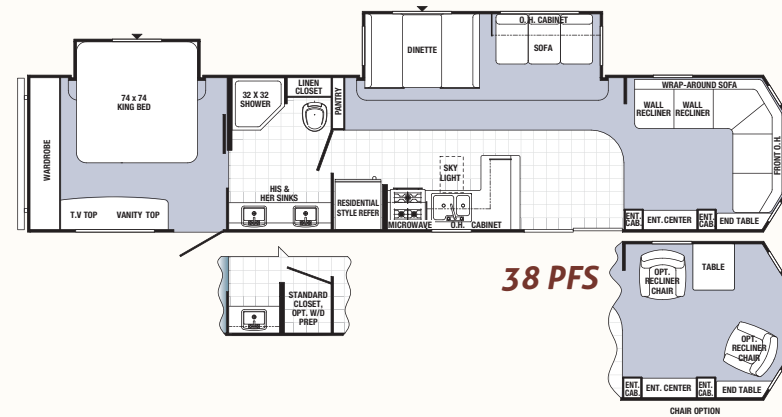
Fifth wheel weights include optional 13.5 BTU roof air, double door refer, oven and awning.





**MODEL 276 RLSS** Shown in Pesto Decor with optional American Beech glazed raised panel cabinetry.

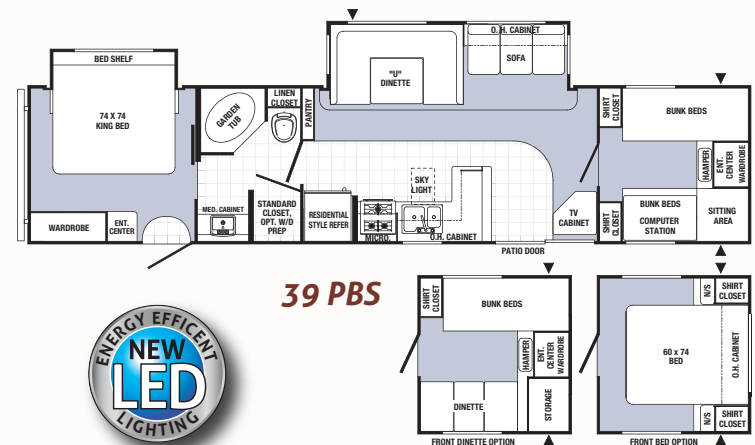




**MODEL 39 PFK** This 18' slide room has a residential sleeper, twin recliners and a free standing dinette. Shown in Nutmeg Decor with American Beech glazed cabinetry.

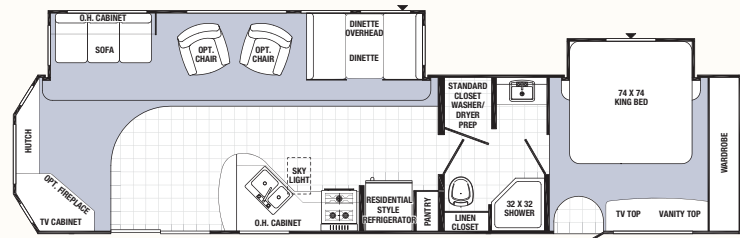
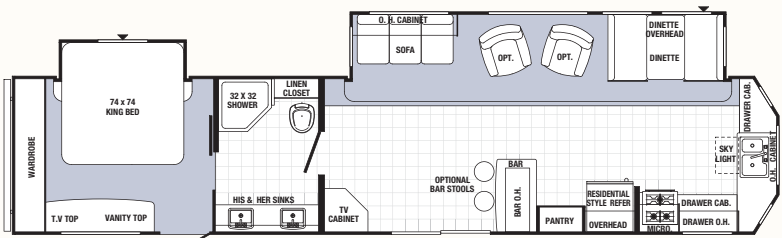
## Puma Park Trailers

Create the perfect vacation destination. Puma Park Trailers offer comfortable living with seven spacious floor plans, and a choice of two bedroom and den options for a private retreat. Residential style furnishings and a large master bedroom with king size bed give a well appointed feeling of home.



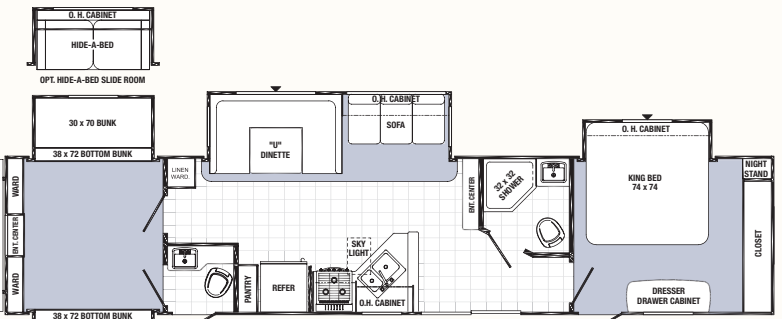
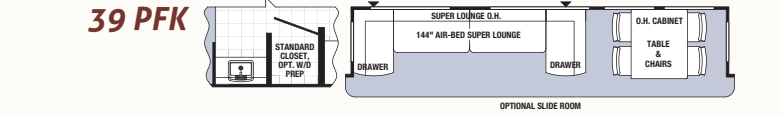
**PUMA**  
by Palomino



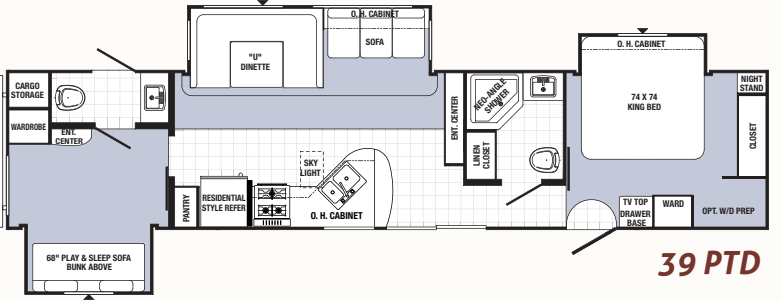


**39 PFK**

**39 PRL**



**39 PQB**



**39 PTD**

Models	38-PFS	38-PLF	39-PBS	39-PFK	39-PQB	39-PTD	39-PRL
Hitch Dry Weight (lbs.)	1245	1695	1295	1590	1325	1405	1265
Dry Axle Weight (lbs.)	7645	7870	7930	7845	9040	8795	8470
Total Dry Weight (lbs.)	8890	9565	9225	9435	10365	10,200	9785
Carrying Capacity (lbs.)	1752	2480	2180	1802	2910	902	1640
GVWR (lbs.)	11405	12095	11455	11750	13325	11565	11425
Tire Size	15"	15"	15"	15"	15"	15"	15"
Interior Height	80"	80"	84"	84"	84"	84"	84"
Exterior Height w/AC	11'9"	11'9"	11'9"	11'9"	11'9"	11'9"	11'9"
Exterior Width	96"	96"	96"	96"	96"	96"	96"
Overall Length	41'	41'9"	40'2"	41'	42'6"	41'	40'3"
Fresh Water Capacity (gal.)	42	51	51	51	51	51	51
Grey Water Capacity (gal.)	84	84	84	84	84	84	84
Black Water Capacity (gal.)	42	42	42	42	42	42	42
Awning Size	21'	21'	21'	21'	21'	21'	21'

Park trailer weights include optional 13.5 BTU roof air, double door refer, oven and awning.



**MODEL 39 PFK**

Enjoy the view through triple picture windows. This kitchen features an 18 cu. ft. residential refrigerator with ice maker and a freestanding stove.

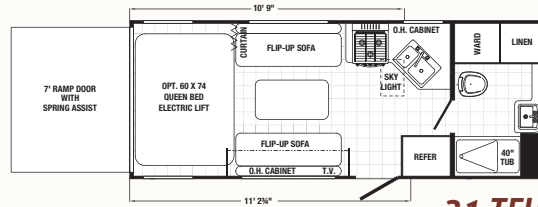




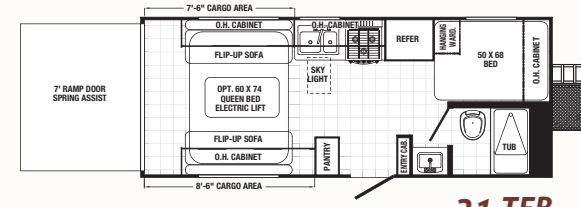
# Toy Haulers

## Play Time Well Spent

Take your toys and friends...head out for an adventure. Puma Toy Haulers are a relaxing and well appointed retreat after a busy day in the great outdoors.



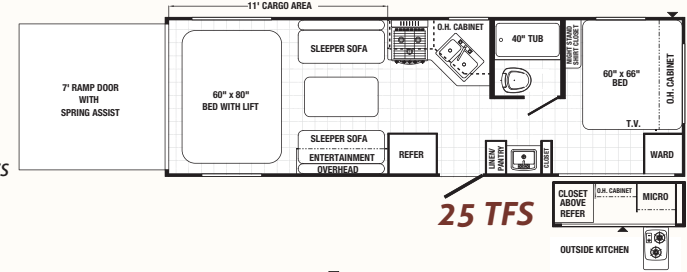
**21 TFU**



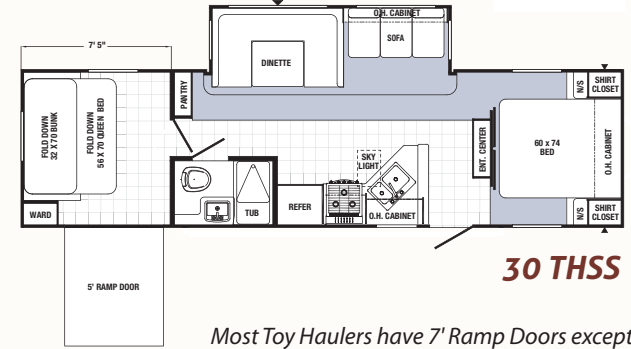
**21 TFB**



Puma Toy Haulers are equipped with long-life LED lighting inside and out.



**25 TFS**



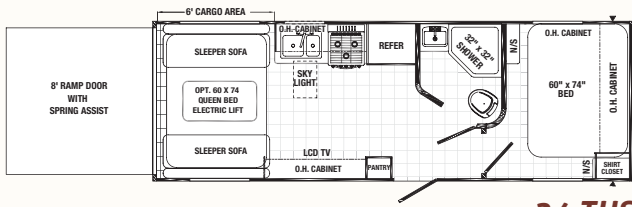
**30 THSS**

**MODEL 356 QL6**  
Shown in French Roast Decor with optional Cherry glazed cabinetry. The comfortable U-dinette converts to a sleeping area.

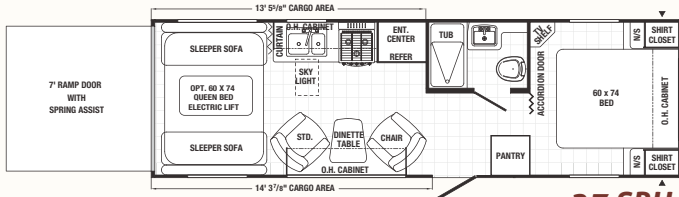


Most Toy Haulers have 7' Ramp Doors except the

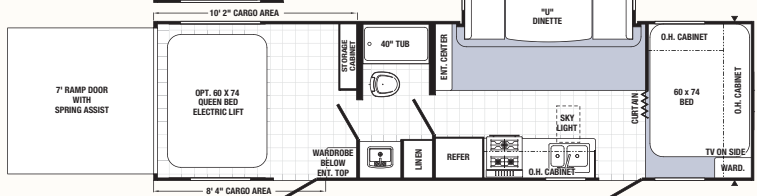
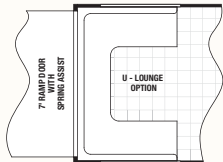
Models	21-TFU	21-TFB	24-THS	25-TFS	27-SBU	30-THSS
Hitch Dry Weight (lbs.)	861	773	536	797	902	1145
Dry Axle Weight (lbs.)	4672	4484	5882	6153	6028	6200
Total Dry Weight (lbs.)	6004	5257	6418	6950	6930	7345
Carrying Capacity (lbs.)	1856	2516	4228	3957	4082	3098
GVWR (lbs.)	7861	7773	10696	10957	11062	11305
Tire Size	205/75D/14	205/75D/14	225/75R/15D	225/75D/15	225/75D/15	225/75D/15
Interior Height	84"-96"	84"-96"	84"-96"	84"-96"	84"-96"	80"
Exterior Height w/AC	12'	12'	12'	12'	12'	11'1"
Exterior Width	96"	96"	96"	96"	96"	96"
Overall Length	24'7"	24'10"	28'2"	29'8"	30'5"	35'4"
Fresh Water Capacity (gal.)	51	51	51	100	100	100
Grey Water Capacity (gal.)	32	32	42	42	42	42
Black Water Capacity (gal.)	32	32	42	42	32	32
Awning Size	14'	14'	13'	13'	16'	16'



**24 THS**



**27 SBU**



**30 DSU**

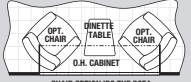
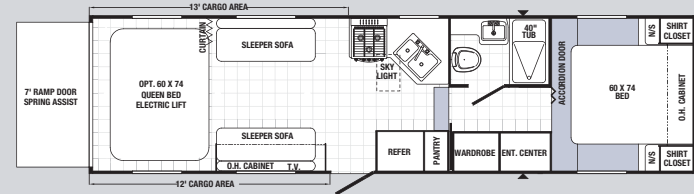


**MODEL 356 QLB**

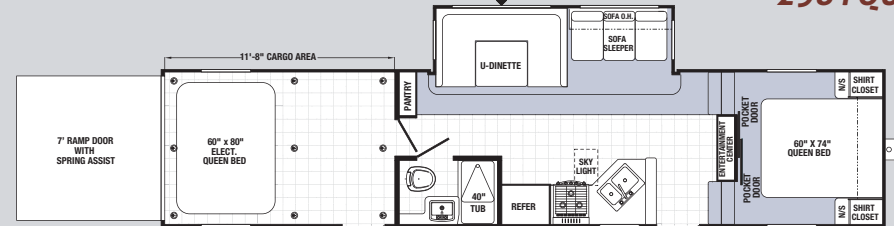
This bath features a 32" x 32" Neo Shower with a skylight and optional glass doors.



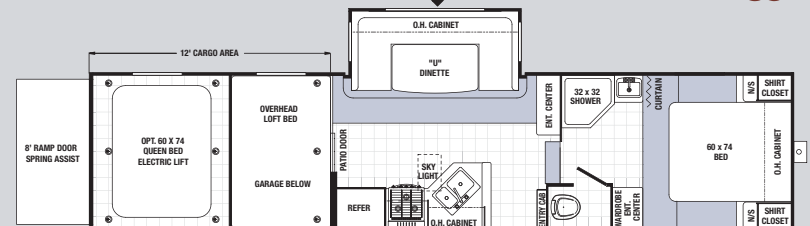
**PUMA TOY HAULER FIFTH WHEELS**



**298 FQU**



**351 THSS**



**356 QLB**

24-THS, 30-THSS & 356-QLB.

30-DSU	298-FQU	351-THSS	356-QLB
1124	1819	1481	2557
6599	5810	7950	6651
7723	7629	9431	9208
3378	3433	4000	4432
11284	11979	13481	14557
225/75D/15	225/75D/15	235/80D/16	235/80D/16
84"-96"	8'0"	84"-96"	8'6"
12'	12'	12'	13'2"
96"	96"	96"	96"
33'5"	30'11"	37'0"	35'9"
100	100	100	100
42	32	42	42
42	42	42	32
18'	18'	21'	21'



**MODEL 356 QLB** Bakers will appreciate this large 21" oven. This bar ledge is a handy place to set items while cooking.



# Puma Construction



- A.** Rubber Roof (12 year warranty)
- B.** Rugged, Powder Coated Steel I-Beam Frame
- C.** Sturdy .024 Gauge Aluminum Skin
- D.** Exterior Amber Lens Patio Light
- E.** Exterior Hitch Light for Night-Time Hook Up
- F.** 51 Gallon Fresh Water Tank
- G.** Bold Exterior Graphics
- H.** Residential Grade Carpet-17 oz. with Pad
- I.** Color Band Metal Enhances Exterior Looks
- J.** Sidewall Studding Spaced 16" Apart
- K.** Longitudinal Floor Studding Spaced 14" Apart
- L.** 5/8" One Piece Floor Decking
- M.** New Beauflor® Linoleum Flooring Cold Crack Resistant
- N.** R7 Fiberglass Insulation Cut and Glued Between Sidewall Studs
- O.** 4-1/2" Crowned Truss Roof Rafters
- P.** Steel Crossmembers for Added Support
- Q.** Floor Ducted Heat
- R.** Insulated Wrapped Ducted Air Conditioning Runs
- S.** 3/8" Roof Decking
- T.** Puma "Next Generation™" Enclosed and Heated Water Tank
- U.** Radius Exterior Doors

**Longer Lasting ♦ Better Built**

# Puma Features

# PUMA

by Palomino

## Toy Hauler Features



Outside Entertainment  
(Available on Select Models)



Toy Hauler with optional beds



## Side Paw Kitchen

This convenient outside kitchen helps you stay where the action is. The outside entertainment center lets you watch the game, while enjoying the fresh air.



Comfortable Seating



Dramatic energy efficient, long-life LED lighting



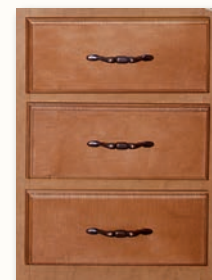
Kitchen Skylight with Shade



Hard Valances in Bedrooms  
(Most models)



Decorative Backsplash



Solid Wood Drawer Fronts

Baggage Compartment with sliding tray



Fuel Station



## STANDARD FEATURES

### Exterior

- ◆ Radius Entry Doors
- ◆ Powder Coated Frames
- ◆ EZ Lube Axles
- ◆ Tinted Safety Glass
- ◆ Clamp Ring Windows
- ◆ Double Entry Doors (Where Applicable)
- ◆ Pass-Thru Storage (Where Applicable)
- ◆ Rubber Roof - 12 Year Manufacturer's Warranty
- ◆ 9" Three-Tier Steps
- ◆ Rain Gutters
- ◆ Automotive Style Fender Skirts
- ◆ Radius Trunk Doors
- ◆ Wrapped Darco Underbelly
- ◆ One Piece, 24' Sheet, 5/8" Floor Decking (25 Year Manufacturer's Limited Warranty by Affiliated Resources, Inc.)
- ◆ 2 x 3 Flush Joists on 12" Centers
- ◆ Lighted Pass-Thru Exterior Compartments (Where Applicable)
- ◆ 2-20 lb. Gas Bottles
- ◆ 6 Gal. DSI Hot Water Heater
- ◆ Rack and Pinion Electric Slide System with Manual Override (Standard on all Slide-Out Models)
- ◆ Heavy Duty Storage Door for the Puma Den Option
- ◆ Clamp Ring Luggage Doors
- ◆ Large 31 x 14 Front Pass Thru Baggage Doors (Travel Trailers Only)
- ◆ Radial Tires

### Interior

- ◆ 80" Interior Height
- ◆ Ventilated Side Windows in all Slide-outs
- ◆ Insulated A/C Ducting (All Models)
- ◆ Floor Ducted Heat
- ◆ 30,000 BTU Furnace
- ◆ Flush Floor Slide-Outs
- ◆ 16" Deep Overhead Cabinets in Super-Slide Models
- ◆ Real Wood Drawers
- ◆ Kitchen Ball Bearing Drawer Guides
- ◆ LED Lighting Throughout



- ◆ Wood Medicine Cabinet with Mirrored Door
- ◆ 60/40 Deep Double Bowl Kitchen Sink
- ◆ High Rise Kitchen Faucet
- ◆ Atwood 3-Burner, High Output Range
- ◆ Knife Rack
- ◆ Upgrade Window Treatment
- ◆ 55 Amp Converter with Battery Charger
- ◆ Spice Rack(Kitchen)
- ◆ Divided Silverware Drawer (All Models)
- ◆ Innerspring Mattress
- ◆ Bedroom Carpet
- ◆ 1 Sink Cover
- ◆ Single Door Refrigerator
- ◆ Power Vent in Bath
- ◆ 12V Shower Light
- ◆ Four Interior Decors
- ◆ Coat Hooks in Entry Way (Most models)
- ◆ Quilted Bunk Mats
- ◆ Oil Rub Bronze Hardware, Light and Bath Fixtures
- ◆ Cabinet Doors under Dinette Seats
- ◆ Upgraded Carpet (17 oz. w/Pad)
- ◆ Upgraded Residential Beauflor® Linoleum w/7 year cold crack warranty
- ◆ Full Length Wardrobe and Shirt Closet in Front Bedrooms (Travel Trailer Only)
- ◆ Lambrequin Window Treatments (Living Room and Bedrooms)
- ◆ Solid Wood Drawer Fronts
- ◆ Kitchen Skylight
- ◆ Decorative Kitchen Splashboard
- ◆ Hard Valances in all Bedrooms (Most Models)
- ◆ New Larger Countertops (Most Models)

### Standard Safety Features

- ◆ CO2 Detector
- ◆ LP Leak Detector
- ◆ Fire Extinguisher
- ◆ Smoke Detector

## Travel Trailers and Fifth Wheels

### Options

- ◆ Water Purifier
- ◆ Sink Cover
- ◆ Range Cover
- ◆ Double Door Refrigerator
- ◆ 6 Gal. Gas/Electric DSI Hot Water Heater
- ◆ Water Heater By-Pass (Forced Option)
- ◆ 21" Oven
- ◆ Microwave
- ◆ Create-a-Breeze™ Fan (Exchange)
- ◆ AM/FM CD/DVD Stereo
- ◆ TV Antenna with Booster and Cable Hook-Up
- ◆ Bedroom TV Hook-Up
- ◆ Extra Roof Vent
- ◆ 13,500 BTU Ducted A/C
- ◆ 15,000 BTU Ducted A/C
- ◆ Bedspread
- ◆ Outside Grill

### Park Trailers

#### Additional Standards

- ◆ 6 Gal. Gas/Electric DSI Hot Water Heater
- ◆ Upgraded Serta® Mattress
- ◆ Home Theater DVD Surround Sound AM/FM/CD Player
- ◆ FS Range
- ◆ Phone Jacks
- ◆ Patio Door
- ◆ Tinted Safety Glass
- ◆ Residential Refrigerator with Ice Maker
- ◆ American Beech Glazed w/Raised Panel Doors
- ◆ Lambrequin Window Treatments
- ◆ Bedroom Roof Vent
- ◆ 35,000 BTU Furnace
- ◆ New Larger Countertops
- ◆ Upgraded Residential Beauflor® Linoleum w/7 year cold crack warranty

### Options

- ◆ Water Purifier
- ◆ Sink Cover
- ◆ 12 Gal. Gas/Electric Water Heater
- ◆ Water Heater By-Pass
- ◆ Range Cover
- ◆ Oven
- ◆ Microwave

- ◆ Tub Surround
- ◆ Mini Blinds
- ◆ Day/Night Shades
- ◆ Wall Border
- ◆ Front Window with Rock Guard (Travel Trailers Only)
- ◆ Awning
- ◆ Electric Awning
- ◆ 2 Stabilizer Jacks
- ◆ 4 Stabilizer Jacks (Travel Trailers Only)
- ◆ Outside Shower
- ◆ Diamond Plate
- ◆ Fiberglass Front Cap w/Diamond Plate (Fifth Wheels & Travel Trailers)
- ◆ Power Front Jacks (Fifth Wheels Only)
- ◆ 30 lb. Gas Bottles and Cover
- ◆ 26" LED TV
- ◆ 32" LCD TV
- ◆ Spare Tire and Carrier
- ◆ AM/FM CD/DVD Home Theater Surround Sound System
- ◆ PUMA Den\*
- ◆ Swivel Rocker\*
- ◆ Bath Skylights
- ◆ Free Standing Dinette\*
- ◆ Overhead Cabinets in Slide Room\*
- ◆ Hide-A-Bed Sofa\*
- ◆ Comfort Air Bed
- ◆ Glass Shower Door\*
- ◆ Roof Ladder
- ◆ Heated Tanks
- ◆ Stacked Bunk Option
- ◆ Upgraded Serta® Mattress
- ◆ Enclosed Underbelly

### Residential Package

- ◆ Residential Style 18 Cu. Ft. Refer
- ◆ Patio Door
- ◆ Free-Standing Range

\*Available on select models.

- ◆ 26" LED TV
- ◆ 32" LCD TV
- ◆ Double Door RV Refrigerator IPO House Type
- ◆ 50 Amp Service
- ◆ Washer/Dryer Prep with 50 Amp Service
- ◆ Stackable Washer/Dryer Includes Prep
- ◆ Convection Microwave/Cook Top
- ◆ Create-A-Breeze™ Fan (Exchange) Fantastic Vent Fan
- ◆ 12 V. Ceiling Fan in Living Room
- ◆ 12 V. Ceiling Fan in Bedroom
- ◆ TV Antenna with Booster and Cable Hook-Up
- ◆ Bedroom TV Hook-Up
- ◆ 13,500 BTU Ducted Air Conditioning
- ◆ 15,000 BTU Ducted Air Conditioning
- ◆ King Bedspread
- ◆ Outside Grill
- ◆ Outside Shower
- ◆ 30" Entry Door IPO of Sliding Patio Door
- ◆ Tub Surround
- ◆ Bath Skylight
- ◆ Glass Shower Door
- ◆ Mini Blinds
- ◆ Day/Night Shades
- ◆ Freestanding Dinette
- ◆ Overhead Cabinets in Slide Room
- ◆ Wall Border
- ◆ Woodgrain Linoleum
- ◆ Bar Stools (2 per Floorplan)
- ◆ Swivel Rocker
- ◆ 2 Exterior Speakers
- ◆ Hide-a-Bed
- ◆ Comfort Air Bed
- ◆ 21' Awning
- ◆ Electric Awning
- ◆ 2 Stabilizer Jacks
- ◆ 4 Stabilizer Jacks
- ◆ Roof Ladder
- ◆ Diamond Plate
- ◆ 30 Lb. Gas Bottles and Cover
- ◆ Heated Tanks
- ◆ Spare Tire and Carrier
- ◆ Folding Grab Handle
- ◆ Carbon Monoxide Detector
- ◆ Fireplace (Available Certain Models)
- ◆ Z240

### Residential Package

- ◆ Residential Style 18 Cu. Ft. Refer
- ◆ Patio Door
- ◆ Free-Standing Range

# Toy Haulers

## Additional Standards

- ◆ Heavy Duty I-Beam Frames with EZ Lube Axles
- ◆ 1/4" x 8" Tie Down Reinforcement Plates for Secure Cargo Tie Downs
- ◆ Beaver Tail Rear Floor for Easy Loading
- ◆ 2" x 2" Wood Framed Sidewalls on 16" Centers
- ◆ 2" x 3" Floor Joist on 10" Centers
- ◆ R-7 Insulation Floor, Walls, and Ceiling for Comfort
- ◆ One Piece 5/8" Floor Decking with a 25 Year Limited Warranty
- ◆ One Piece Beauflor® Linoleum
- ◆ 3/8" Walkable Roof Decking Over 4-1/2" Crowned Roof Rafters
- ◆ One Piece Rubber Roof with 12 Year Warranty
- ◆ Insulated Duct For Air Conditioning in Ceiling
- ◆ Floor Ducted Heat

- ◆ 55 Amp Converter Standard
- ◆ 7' Rear Ramp Door Height, 8' on 24 THS, 30 THSS and 356 QLB
- ◆ 5.1 Dolby Surround Sound System with Sub-Woofer, AM/FM/DVD Player, Weather Band, and Plug-In for iPod (N/A 21 TFB and 21 TFU)
- ◆ 26" LED TV with Movable Bracket for Easy Mounting Inside or Outside (Most Models)
- ◆ Front Baggage Compartment with Sliding Tray (27 SBU, 298 FQU & 356 QLB)
- ◆ Front Exterior Baggage Compartment
- ◆ Sofas Fold-Down into Queen Bed
- ◆ Tinted Safety Glass
- ◆ All Interiors Available w/Standard American Beech Cabinets or Optional Glazed Cherry

## Options

- ◆ Water Purifier
- ◆ Sink Cover
- ◆ Range Cover

- ◆ Double Door Refrigerator
- ◆ 6 Gal. Gas/Elec. DSI Hot Water Heater
- ◆ Water Heater By-Pass
- ◆ Oven
- ◆ Microwave
- ◆ Convection Microwave/Cook Top
- ◆ Create-A-Breeze™ Fan (Exchange Fantastic Vent Fan on Travel Trailers)
- ◆ AM/FM CD/DVD Stereo (21 TFU and 21 TFB Only)
- ◆ Home Theater DVD Sound System with AM/FM CD
- ◆ 26" LED TV (Available on Most Models)
- ◆ 32" LCD TV (IPO) Where Available
- ◆ 2 Exterior Speakers
- ◆ TV Antenna with Booster and Cable Hook-Up
- ◆ Bedroom TV Hook-Up
- ◆ Extra Roof Vent
- ◆ 13,500 BTU Ducted Air Conditioning
- ◆ 15,000 BTU Ducted Air Conditioning

- ◆ Bedspread
- ◆ Manual Track Queen Bed
- ◆ Single Electric Track Queen Bed
- ◆ Double Electric Track Queen Bed
- ◆ Tub Surround
- ◆ Bath Skylight
- ◆ Glass Shower Door (24 THS, 356 QLB)
- ◆ Mini Blinds
- ◆ Day/Night Shades
- ◆ Wall Border
- ◆ Woodgrain Linoleum
- ◆ Awning
- ◆ Electric Awning
- ◆ 1 Swivel Chair (27 SBU Only)
- ◆ 2 Stabilizer Jacks
- ◆ 4 Stabilizer Jacks (Travel Trailers Only)
- ◆ Power Front Jacks (Fifth Wheels Only)
- ◆ Roof Ladder
- ◆ Outside Shower
- ◆ Outside Grill
- ◆ 4.0 KW Gas Onan Generator

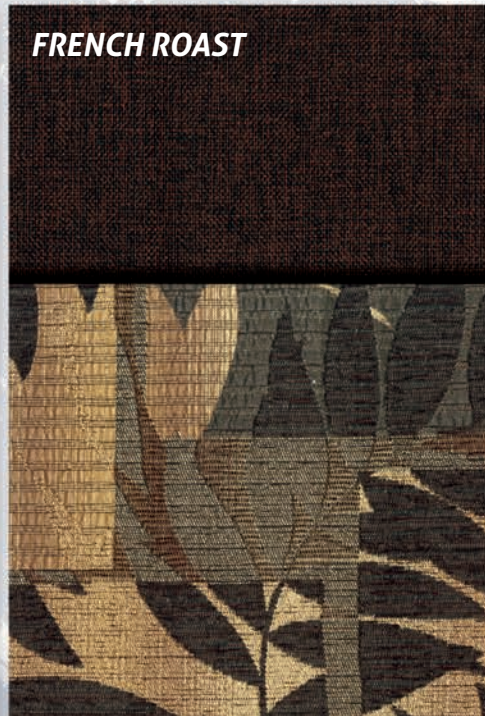
- ◆ 3.6 KW LP Onan Generator
- ◆ 30 Gal. Fuel Pump Station
- ◆ 30 lb. Gas Bottles and Cover
- ◆ Zip Screen
- ◆ Hide-a-Screen
- ◆ Hitch Cover (Fifth Wheels Only)
- ◆ Front Fiberglass Cap with Diamond Plate
- ◆ Diamond Plate
- ◆ Mission Alum. Modified Rim
- ◆ Heated Tanks
- ◆ Wash Down Kit
- ◆ Spare Tire and Carrier
- ◆ Folding Grab Handle
- ◆ Carbon Monoxide Detector
- ◆ Upgraded Serta® Mattress (Select Models)

## Decor Options

**NUTMEG**



**FRENCH ROAST**



**PESTO**



**MOCHA**





**PRE-DELIVERY INSPECTION FACILITY**

20,000 square feet of quality assurance. The bare essentials for a premium product. This state-of-the-art facility gives immediate daily feedback to production for quality assurance in every unit built.



Forest River, Inc. encourages our customers to purchase their Forest River products from a local dealership whenever possible for the following reasons:

- 1) Forest River, Inc. dealers are independently owned and operated businesses so priority service and scheduling is at their discretion and is often provided to customers that purchased their unit at that dealership.
- 2) Purchasing locally allows customers to establish meaningful relationships with a dealer, enhancing the RV experience through assistance with product questions, user tips or RV regulations for your state or country, and much more!
- 3) Canadian customers must meet requirements to bring an RV purchased out of the country to their home. These requirements may involve additional inspections and certifications, taxes and fees. Your local Canadian Dealer is a professional at meeting these requirements.
- 4) Scheduling timely warranty repairs and adjustments through a local dealership provides far greater flexibility and convenience to you, the customer!

It is the goal of Forest River, Inc. that all of our RV owners fully enjoy the RV experience and that customer satisfaction meets or exceeds their expectations!

# PUMA

Travel Trailers • Park Trailers  
Fifth Wheels • Toy Haulers

by Palomino

**Puma has a wide variety of models and floorplans to fit your lifestyle. Get out there on the prowl and enjoy leisure living at its best!**

Your Puma Dealer

**24/7 EMERGENCY ROADSIDE ASSISTANCE**

**Coach-Net<sup>®</sup>**  
RV Technical & Roadside Assistance

For a worry-free ownership experience Forest River includes one year of Coach-Net RV Technical & Roadside Assistance with each RV purchase. Whether new to the RV lifestyle or an experienced RV enthusiast, Forest River owners have 24/7 access to technical, operational and emergency road service coverage throughout the US & Canada. Coach-Net's fast, dependable service is just a phone call away.



On The Web at:  
[www.palominorv.com](http://www.palominorv.com)

Puma Division ♦ Forest River, Inc.  
2551 Century Drive ♦ Goshen, IN 46528 ♦ 574-642-0610  
[www.palominorv.com](http://www.palominorv.com)

All illustrations and specifications contained in this literature are based on the latest product information at time of publication. Forest River, Inc. reserves the right to make changes in prices, colors, materials, equipment and specifications at anytime without notice and assumes no responsibility for any error in this literature. All weights shown are approximate. All units are shipped F.O.B. point of manufacture.

CONSULT YOUR LOCAL DEALER FOR WARRANTY INFORMATION. 2/13©2013 Forest River



**Learn More**  
Scan this barcode using a QR Reader on your smart phone to learn more about Forest River.



A Berkshire Hathaway company.

