

KODIAK

KODIAK



Where Ultra-Lite Meets Luxury





Kodiak Ultra-Lite
Model 276BHSL in Buckshot

Premium Entertainment System

Kodiak's premium entertainment system features an AM/FM /CD/DVD player with MP3 input. Interior and exterior speakers are also included. The flat screen LCD HD TV is an optional feature.



Central Control Station

All switches and monitor panel centrally located for easy use.



Kodiak Ultra-Lite
Model 276BHSL

Kodiak is the leader in ultra-lite technology. With units light enough to be towed by most SUV's minivans, crossovers and light trucks, we're sure to have the model that best fits your family's needs.

But, just because Kodiak is an ultra-lite doesn't mean it's light on storage or features. With spacious countertops, well-designed cabinets and oversized pass-through exterior storage compartments, it's easy to take everything along on your next adventure.



Model 276BHS



Model 276BHS



Model 299BHS

Kodiak's all-new custom cabinetry design increases storage space by over 40%! Overhead cabinets are wider, taller and deeper. Plus, our exclusive countertops offer more usable space.

Solid surface countertop with stainless steel sink and pullout faucet, extra deep storage drawers, dedicated pots and pans storage, plus full-extension steel roller ball bearing drawer guides are standard on all Kodiaks.

You'll appreciate Kodiak's large hanging wardrobe space, dual reading lights, and upgraded Evergreen super-comfortable mattress with designer bedding package.



Model 279BHS



Model 276BHS



Model 276BHS



Model 299BHSL

Kids really enjoy the 299BHSL's convertible bunk/sofa. Opposite, there's an overhead bunk with ladder, as well as ample storage for toys and clothes.



Model 299BHSL Sofa and Bunk



Model 299BHSL Sofa



Model 279RBSL



Model 299BHSL

Spacious bathroom with large bathtub, shower surround with sliding glass doors, large linen closet and skylight.



Model 299BHSL



Bunk Beds
Model 276BHSL



Bunk Room Storage
Model 276BHSL

Quad bunk with full dinette and hanging wardrobe with three full-size drawers.



AERODYNAMIC PROFILE



ULTRA-LITE DESIGN MEANS BETTER FUEL ECONOMY

Kodiak is specifically designed to be towed by most light trucks and sport utility vehicles. The aerodynamic profile pushes air up the front wall and over the roof, improving towing ease and fuel economy.

ENCLOSED AND HEATED UNDERBELLY

Kodiak's enclosed and heated underbelly prevents water tanks from freezing, and protects the tanks and floor from road damage.



Spray Port



Detachable Power Cord



Outside Kitchen

Model 299BHSL



Slam Latch
Doors



Pass-Through Storage

BEAR CAVE STORAGE

Kodiak's Bear Cave pass-thru V-shaped cargo compartment is the largest offered by any ultra-lite. Our unique design increases storage volume by 30%.

With Kodiak, you can take it with you!

POPULAR OPTIONS



Flat Screen
HDTV



Aluminum
Rims



Front
Jack

BEAR CAGE CONSTRUCTION

ROOF - 5" THICK TRUSS STYLE ALUMINUM FRAME CONSTRUCTION

- 1 TPO Roof with 12 Year Manufacturer's Warranty
- 2 Luan Wood Backer
- 3 Tubular Aluminum Welded Framed Roof
- 4 High Density Structural Foam
- 5 Decorative Ceiling Finish
- 6 13,500 BTU Roof Ducted A/C
- 7 A/C Ducting System with Taped Seams

FLOOR - FULLY LAMINATED WELDED ALUMINUM FRAME CONSTRUCTION

- 1 Residential Carpeting in Slide Room
- 2 Beauflor Flooring -10 Year Warranty
- 3 Dual Layers of Floor Decking
- 4 Tubular Welded Aluminum Framed Floor
- 5 High Density Structural Foam
- 6 Polypropylene Waterproof Vapor Barrier

CHASSIS - STEEL I-BEAM POWDER COATED CHASSIS

- 1 Folding Entry Steps
- 2 Four Corner Stabilizer Jacks
- 3 Large Heated Tanks Mounted Below Floor
- 4 "Polar Package" Enclosed and Heated Underbelly (N/A Express)
- 5 Radial Tires
- 6 Easy-Lube Hubs
- 7 LP Tanks with ABS Cover

WALLS - FULLY LAMINATED, WELDED ALUMINUM FRAME CONSTRUCTION

- 1 High Gloss Fiberglass Exterior
- 2 Luan Wood Backer
- 3 Tubular Aluminum Welded Frame Walls
- 4 High Density Structural Foam Insulation
- 5 Decorative Wall Finish
- 6 Tinted Safety Glass Windows
- 7 Insulated Baggage Doors with Slam Latches (N/A Express)
- 8 TPO Fender Skirts
- 9 XL-Folding Entry Assist Handle (N/A Express)
- 10 Aerodynamic Front Profile for Better Fuel Economy
- 11 Diamond Plate Rock Guard
- 12 Adjustable Power Awning

5-WAY LAMINATION

6-WAY WELDED ALUMINUM SUPER STRUCTURE

R11 ROOF & FLOOR R7 WALLS

REAL WEIGHTS!

Did you know that every unit is weighed as it leaves the production line? Our certified Acu-Weight even includes options! Most competitors publish only a base weight that doesn't include options. Make sure that you know what the *real weight* is before you buy your next ultra-lite.



DECOR CHOICES



Peppercorn



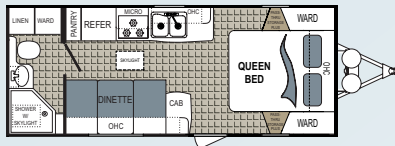
Buckshot



Rullio Eggplant

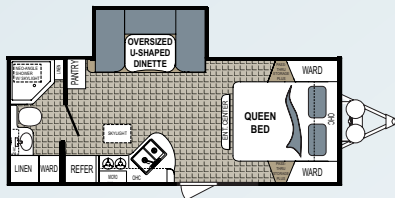
KODIAK

TRAVEL TRAILERS



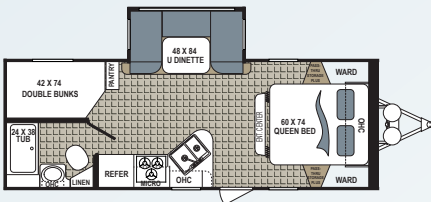
200QB

Unloaded Weight (lbs) 3,804
Hitch Weight (lbs)..... 322
Cargo Capacity (lbs) . 1,596
Overall Height w/AC 10'
Overall Length 24' 2"
Fresh Water Tank(s) 52
Black Water Tank(s) 28
Grey Water Tank(s)..... 39
Tire Size... ST205/75R15(C)
Furnace BTU..... 19,000



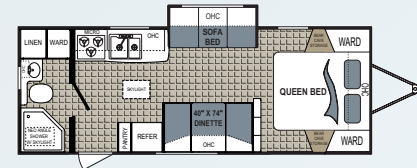
221RBSL

UVW 4,542
Hitch..... 555
Cargo 1,458
Overall Height 10' 8"
Overall Length 24' 8"
Fresh Water Tank 52
Black Water Tank 28
Grey Water Tank 39
Tire Size... ST205/75R15(C)
Furnace BTU..... 19,000



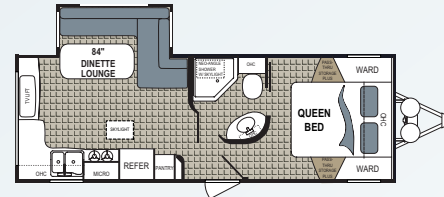
240BHS

UVW TBD
Hitch..... TBD
Cargo TBD
Overall Height TBD
Overall Length 26' 11"
Fresh Water Tank 52
Black Water Tank 28
Grey Water Tank 39
Tire Size... ST205/75R15(C)
Furnace BTU..... 30,000



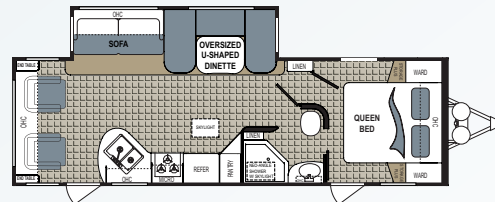
241RBSL

Unloaded Weight (lbs) 4,427
Hitch Weight (lbs)..... 426
Cargo Capacity (lbs) .. 1573
Overall Height w/AC 10'
Overall Length 27' 2"
Fresh Water Tank(s) 52
Black Water Tank(s) 28
Grey Water Tank(s)..... 39
Tire Size... ST205/75R15(C)
Furnace BTU 19,000



242RESL

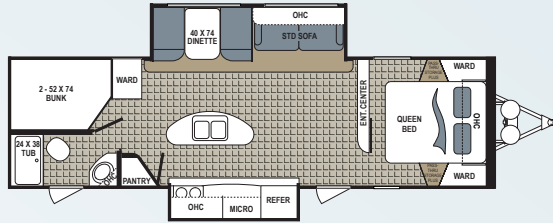
Unloaded Weight (lbs) 4,935
Hitch Weight (lbs)..... 505
Cargo Capacity (lbs) . 1,665
Overall Height w/AC . 10' 7"
Overall Length 27' 7"
Fresh Water Tank(s) 52
Black Water Tank(s) 22
Grey Water Tank(s)..... 39
Tire Size... ST205/75R15(C)
Furnace BTU 30,000



263RLS

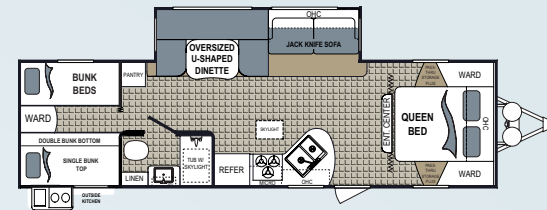
Unloaded Weight (lbs) 5,783
Hitch Weight (lbs)..... 670
Cargo Capacity (lbs) . 1,817
Overall Height w/AC . 10' 7"
Overall Length 31'
Fresh Water Tank(s) 52
Black Water Tank(s) 28
Grey Water Tank(s)..... 39
Tire Size... ST205/75R15(C)
Furnace BTU 30,000

FLOORPLANS START AT ONLY 3000 LBS.



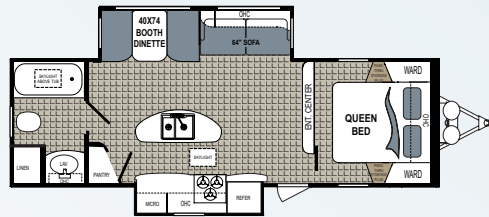
276BHSL

UVW	6,577	Fresh Water Tank	52
Hitch	989	Black Water Tank	28
Cargo	1,023	Grey Water Tank	67
Overall Height	10' 11"	Tire Size ...	ST205/75R15(C)
Overall Length	33' 8"	Furnace BTU.....	30,000



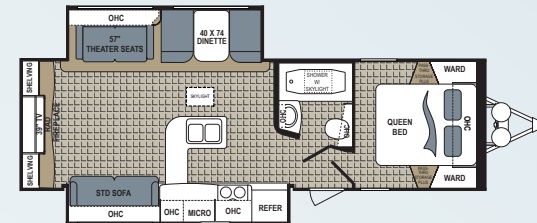
290BHSL

Unloaded Weight (lbs)	5,939	Fresh Water Tank(s)	52
Hitch Weight (lbs).....	765	Black Water Tank(s)	28
Cargo Capacity (lbs) .	1,661	Grey Water Tank(s).....	39
Overall Height w/AC .	10' 7"	Tire Size ...	ST205/75R15(C)
Overall Length	33' 4"	Furnace BTU.....	30,000



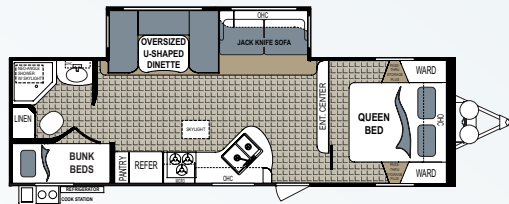
279RBSL

UVW	5,941	Fresh Water Tank	52
Hitch.....	783	Black Water Tank	28
Cargo	1,659	Grey Water Tank	67
Overall Height	10' 10"	Tire Size ...	ST205/75R15(C)
Overall Length	30' 8"	Furnace BTU.....	30,000



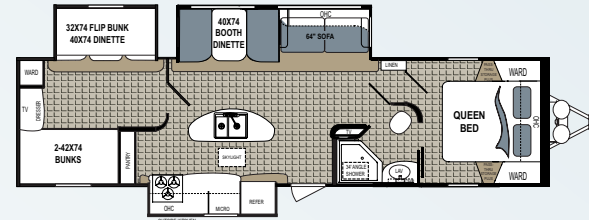
291RESL

UVW	6,490	Fresh Water Tank	52
Hitch.....	710	Black Water Tank	28
Cargo	2,410	Grey Water Tank	56
Overall Height	11' 1"	Tire Size ...	ST225/75R15(D)
Overall Length	32' 4"	Furnace BTU.....	30,000



284BHSL

Unloaded Weight (lbs)	5,799	Fresh Water Tank(s)	52
Hitch Weight (lbs).....	712	Black Water Tank(s)	28
Cargo Capacity (lbs) .	1,801	Grey Water Tank(s).....	39
Overall Height w/AC .	10' 7"	Tire Size ...	ST205/75R15(C)
Overall Length	31' 10"	Furnace BTU	30,000

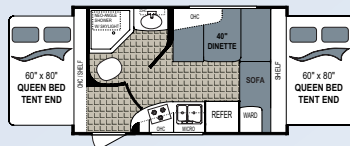


300BHSL

UVW	7,531	Fresh Water Tank	52
Hitch.....	833	Black Water Tank	28
Cargo	1,369	Grey Water Tank	67
Overall Height	10' 11"	Tire Size ...	ST225/75R15(D)
Overall Length	36' 11"	Furnace BTU.....	30,000

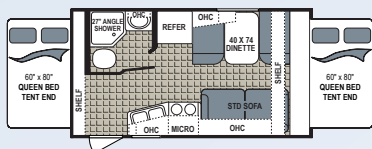
* Fresh water capacity includes water heater

KODIAK EXPRESS



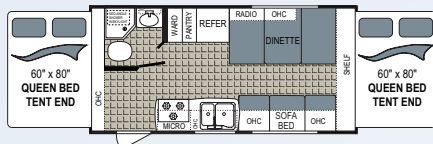
166E

Unloaded Weight (lbs) 3,110	Fresh Water Tank(s) 52
Hitch Weight (lbs) 490	Black Water Tank(s) 28
Cargo Capacity (lbs) ... 640	Grey Water Tank(s) 39
Overall Height w/AC . 9' 10"	Tire Size... ST205/75R14(C)
Overall Length 17' 9"	Furnace BTU 19,000



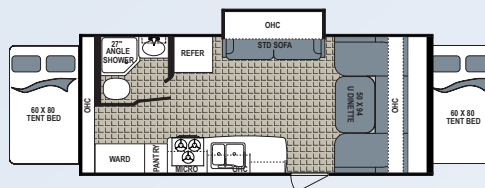
172E

UVW 3,108	Fresh Water Tank 52
Hitch 284	Black Water Tank 28
Cargo 742	Grey Water Tank 39
Overall Height 10'	Tire Size... ST205/75R14(C)
Overall Length 18' 6"	Furnace BTU 19,000



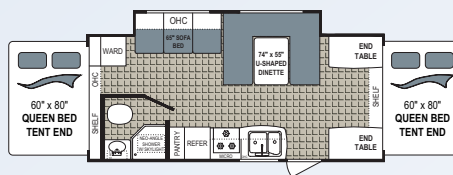
186E

Unloaded Weight (lbs) 3,588	Fresh Water Tank(s) 52
Hitch Weight (lbs) 396	Black Water Tank(s) 22
Cargo Capacity (lbs) . 1,412	Grey Water Tank(s) 39
Overall Height w/AC . 9' 10"	Tire Size... ST205/75R14(C)
Overall Length 20' 8"	Furnace BTU 19,000



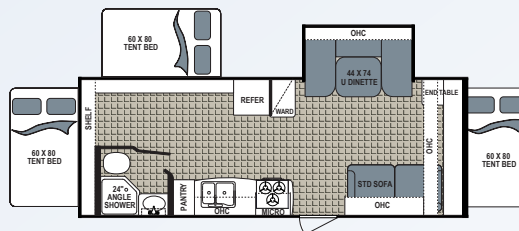
192ES

UVW TBD	Fresh Water Tank 52
Hitch TBD	Black Water Tank 28
Cargo TBD	Grey Water Tank 39
Overall Height TBD	Tire Size... ST205/75R14(C)
Overall Length TBD	Furnace BTU 19,000



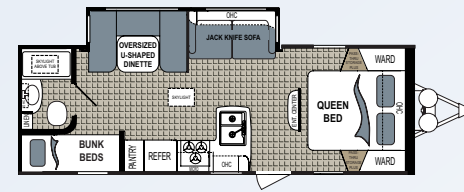
216ES

Unloaded Weight (lbs) 4,243	Fresh Water Tank(s) 52
Hitch Weight (lbs) 536	Black Water Tank(s) 22
Cargo Capacity (lbs) . 1,257	Grey Water Tank(s) 39
Overall Height w/AC . 9' 10"	Tire Size... ST205/75R14(C)
Overall Length 23' 11"	Furnace BTU 19,000



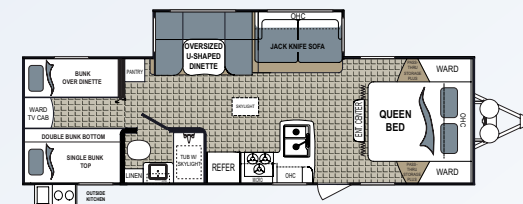
222ES

UVW TBD	Fresh Water Tank TBD
Hitch TBD	Black Water Tank TBD
Cargo TBD	Grey Water Tank TBD
Overall Height TBD	Tire Size TBD
Overall Length TBD	Furnace BTU TBD



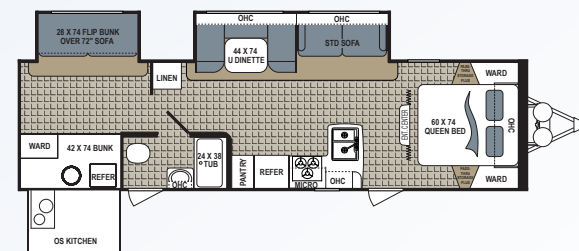
255BHSL

UVW 4,676	Fresh Water Tank(s) 52
Hitch 493	Black Water Tank(s) 28
Cargo 1,924	Grey Water Tank(s) 39
Overall Height 10' 5"	Tire Size... ST205/75R14(C)
Overall Length 28' 4"	Furnace BTU 19,000



283BHSL

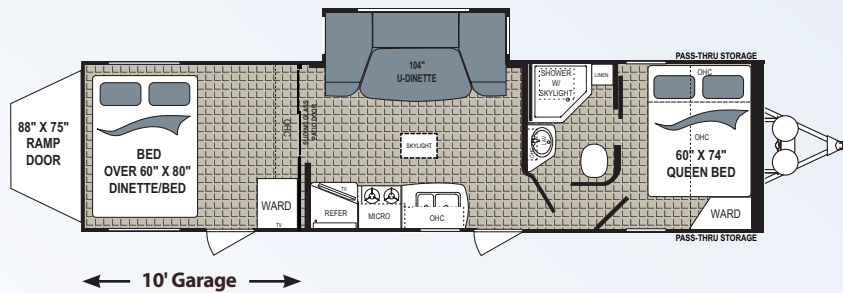
UVW 5,376	Fresh Water Tank(s) 52
Hitch 732	Black Water Tank(s) 28
Cargo 1,224	Grey Water Tank(s) 39
Overall Height 10' 7"	Tire Size... ST205/75R14(C)
Overall Length 32'	Furnace BTU 30,000



299BHSL

UVW 6,290	Fresh Water Tank 52
Hitch 772	Black Water Tank 28
Cargo 1,310	Grey Water Tank 39
Overall Height 10' 9"	Tire Size... ST205/75R14(C)
Overall Length 34' 11"	Furnace BTU 30,000

TOY HAULER



292TQB

Unloaded Weight (lbs) 6,891
 Cargo Capacity (lbs) . 2,789
 Hitch Weight (lbs) . . . 1,056
 Overall Length35' 6"
 Overall Height w/AC . . . 11'
 Fresh Water Tank(s) . . . 46
 Black Water Tank(s) . . . 28
 Grey Water Tank(s) . . . 67
 Tire Size . . . ST225/75R15(D)
 Furnace BTU Output 30,000

Spring Assist Ramp Door
 3000 Lb. Capacity
 Pulldown Screen Option



KODIAK STANDARD AND OPTIONAL FEATURES

External Features

Steel Rims
Easy Lube Axles
Spare Tire, Carrier, & Cover (Opt. w/o Cover:
Express & Expandable)
Diamond Plate
Enclosed Underbelly (N/A Express)
Tinted Safety Glass Windows
(Express, Expandable)
Frameless Windows (N/A Express)
Outside Speakers
Hitch Light (N/A Express)
Patio Light
Bedroom Roof Vent (N/A Express)
Stab Jacks
Electric Awning
LP Cover (N/A Express)
20 LB Bottles
Pack-N-Play (N/A Express)
Exterior Spray Port (N/A Express)
LP Quick Disconnect
Extended Downspouts
TV Antenna
Deluxe Folding Entry Assist Handle
(N/A Express)
Standard Exterior Grab Handle (Express,
Expandable)
Double or Triple Entry Step
Slam Latch Baggage Doors (N/A Express)
28x18 Standard Doors (Express,
Expandable where Applicable)
Limited Graphics (Express, Expandable)
Full Graphics Package (N/A Express)
Standard Bunk Mats (Express, Expandable)

External Features (continued)

Upgraded Bunk Mats (N/A Express)
6" I Beam (Express, Expandable, Standard
Kodiak where Applicable)
8" I Beam (Standard Kodiak where
Applicable)
46 Gallon Fresh Water Tank
28 Gallon Black Tank
39 Gallon Grey Tank
Radial Tires
Window in Door (N/A Express)
Taupe Fiberglass (N/A Express)
White Fiberglass (Express,
Expandable)

Options

Aluminum Rims
19", 26", 32", or 39" LCD/HD TV
(Option Available in Kodiak Only)
Tri Fold Sofa (N/A Express)
Table and Chairs (N/A Express)
Black Tank Flush (N/A Express)
King Cool Sofa Lounge (N/A Express)
Outside BBQ Grill (N/A Express)
15" Aluminum Wheels (N/A Express)
14" Aluminum Wheels
Electric Tongue Jack (N/A Express)
15K Air Conditioner

Interior Features

Beauflor® Flooring
Night Shades Throughout
Wallpaper Border in Living Area
Flip Sofa
Bath Skylight
Tub Surround
Medicine Cabinet w/Mirror
12V Exhaust Bath Fan
Valance Legs (N/A Express)
2 Burner Cooktop (161 Only)
3 Burner Range w/Oven
Range Hood w/12V Fan/Light
6 Gallon Gas/Electric/DSI Water Heater
(N/A Express)
6 Gallon DSI/Gas Water Heater
(Express, Expandable)
AM/FM/CD Player (Express, Expandable)
Jensen Radio (N/A Express)
Cable TV Hookup w/Booster
Bedroom TV Hookup w/LCD Backer
(Express, Standard)
Microwave
13.5K A/C Non-Ducted (Expandable)
13.5K ASA A/C (Express, Expandable)
13.5K A/C Ducted (Standard Kodiak
Where Applicable)
6 CU FT Double Door Refer
Black Refer Insert
Foot Flush Toilet
Sink Cover (N/A Express)
Solid Surface Countertop (N/A Express)
Formica Countertop (Express, Expandable)

Interior Features (continued)

Peppercorn/Egg Plant/ Buckshot
Accent Vinyl Fabrics (N/A Express)
Accent Cloth Fabrics (Express, Expandable)
Maple Cherry Glazed Cabinets
Hard Door Bedroom Separation
(Standard Kodiak Where Applicable)
Soft Curtain Bedroom Separation
(Express, Expandable)
Schwintech Slide System (Where
Applicable)
Non-Opening Window in Slide Room
End (Express, Expandable)
Opening Window in Slide Room End
(N/A Express)
145" Slide Room (Express, Expandable)
152" Slide Rooms (N/A Express)



**Scan our quick response
code to open our website,
and explore the many
products we have to offer!**

Your Local Dealer



**P.O. BOX 2164 • 2164 Caragana Court
Goshen, Indiana 46527**

Sales: 574.537.0600 • Fax: 574.975.6274

www.Kodiak-RV.com

Disclaimer: Product information is as accurate as possible as of the date of publication of this brochure. Features, floorplans and specifications are subject to change without notice. Please also consult our website for more current product information and specifications.

Tow Vehicle Disclaimer CAUTION: Owners of Dutchmen Manufacturing, Inc., recreational vehicles are solely responsible for the selection and proper use of tow vehicles. All customers should consult with a motor vehicle manufacturer or their dealer concerning the purchase and use of suitable tow vehicles for Dutchmen products. Dutchmen disclaims any liability or damages suffered as a result of the selection, operation, use or misuse of a tow vehicle. Dutchmen's limited warranty does not cover damage to the recreational vehicle or the tow vehicle as a result of the selection, operation, use or misuse of the tow vehicle.