

FREELANDER

Beauty, Function, Value.



COACHMEN FREELANDER

 **Coachmen**[®]
A division of Forest River, Inc.

32BH Kitchen/Dinette - shown with Bark interior



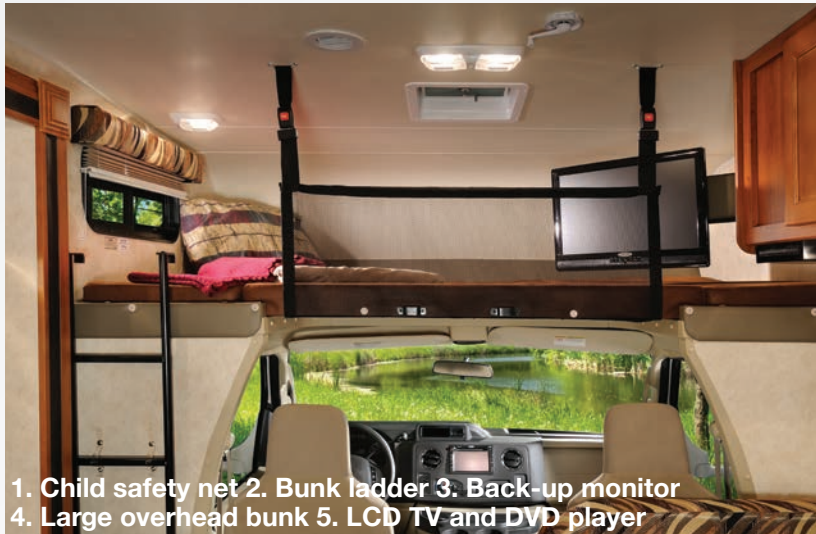
DURABLE DESIGN

- Solid wood cabinet doors
- 1-piece Thermofoil kitchen countertop
- Deep single bowl and double bowl sinks
- High quality furniture and fabrics
- Durable flooring

FREELANDER Class C Motorhomes

The Coachmen Freelander offers you all the "Good Stuff" novice RV'ers quickly appreciate and experienced RV'ers demand. The Freelander mantra is to provide more factory installed features than anyone else, unparalleled value and reliable design and quality at an affordable price. The Freelander will win you over with its right balance of beauty, function, and value in a quality product that has lead the industry in sales for over a decade. Coachmen has been a leading brand in Class C Motorhomes for over 40 years ... **the right product from a Company you can Trust!**

SAFE, COMFORTABLE, FAMILY FRIENDLY



1. Child safety net
2. Bunk ladder
3. Back-up monitor
4. Large overhead bunk
5. LCD TV and DVD player



32BH Bedroom

1. 60"x80" residential queen bed (most models)
2. Large wardrobes and shirt closets
3. Pleated night shades
4. TV prep
5. Ceiling ducted A/C



21QB-LTD Dinette area

1. Seating areas convert into sleeping areas
2. Large windows
3. Sturdy pedestal table
4. Ample seating with safety belts
5. Thermofoil dinette tops



32BH Bunkroom

1. Bunk beds with TV's, DVD players & game console hook-ups
2. Solid pocket door divider
3. Thick bunk bed mattresses
4. Individual bunk bed lights
5. Ventilation windows

21QB-LTD Kitchen/Dinette - shown with Malt interior



FUNCTIONALITY

- Residential microwave
- 3 burner gas range top with power range hood
- Hi-rise kitchen faucet
- Large double door refrigerator
- Systems control panel

FREELANDER EXTERIOR ADVANTAGES

Hi-gloss fiberglass sidewalls.
(N/A on LTD models)



Slide room awnings to protect your slide room from debris.

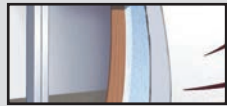


Coachmen's Even Cool™ air conditioning system is ducted through the crowned, vacuum-bonded roof. The system uses AMOCO insulated ductwork with radiused corners to provide maximum cooling efficiency. (Most models)

TPO roof membrane- lightweight, durable and easy to maintain.



Azdel SuperLite™ sidewall substrate, lightweight, durable and moisture resistant.



2" thick aluminum cage constructed sidewall.



Warehouse exterior storage — more than 100 cu. ft. available. (Select Models)

Fresh Water System

Freelanders
50 Gallons

Other Brands
41 Gallons

50 gallons of fresh water. On average 20% more than the competition.



Integrated entry step with 80 inch door.



Standard gas generator gives you 110v power when shoreline power is not available.



Exterior Entertainment Center with LCD TV/ Stereo/DVD and Speakers (Optional on select models)

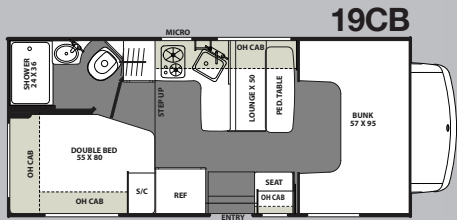


Freelanders' one touch power awning features adjustable arms for ease of use. (Optional on LTD models)

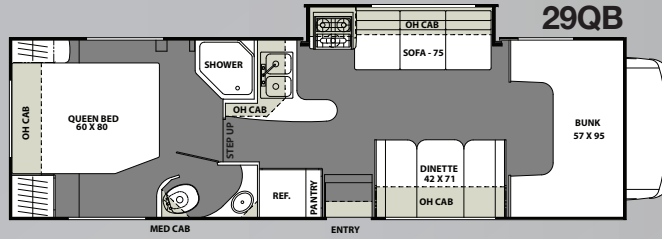


Dash stereo with touch screen control and integrated back-up monitor. (Optional on LTD models)

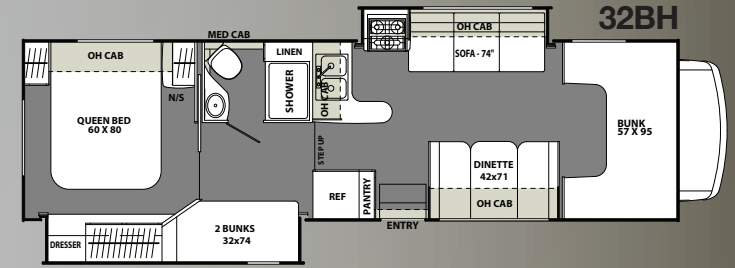




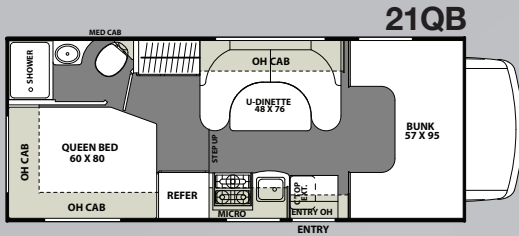
19CB



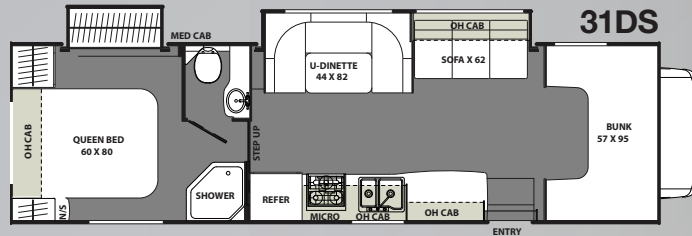
29QB



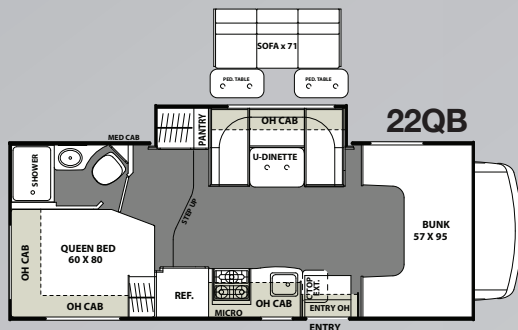
32BH



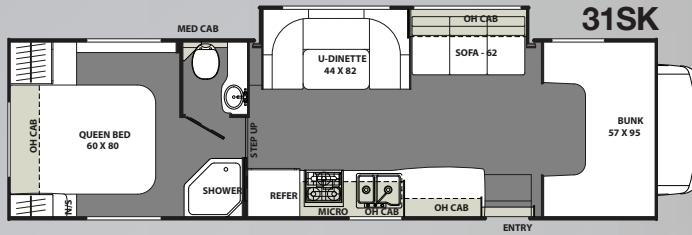
21QB



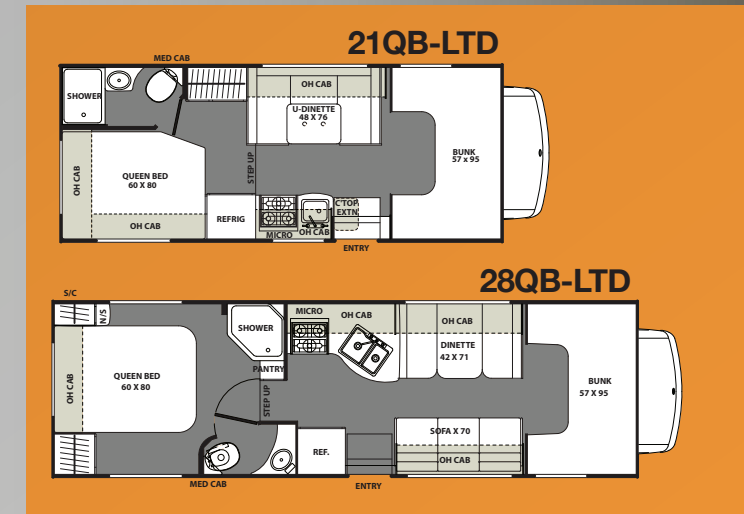
31DS



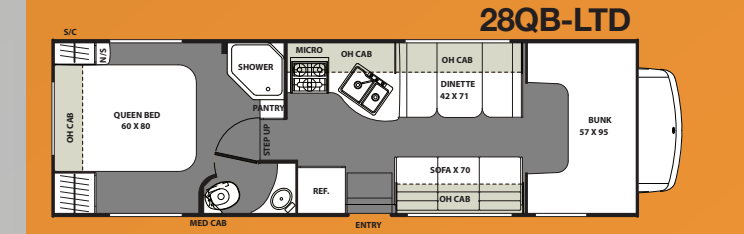
22QB



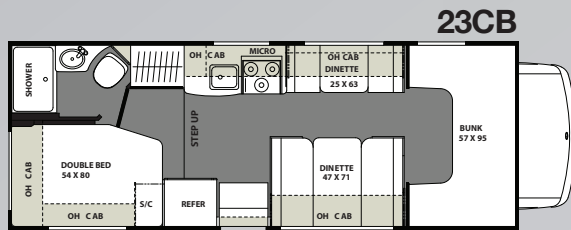
31SK



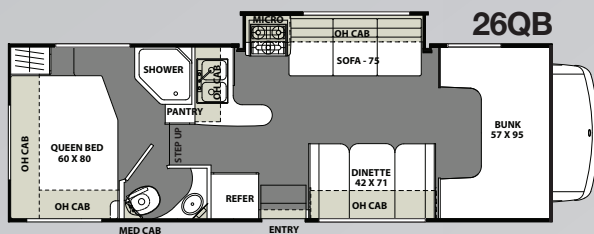
21QB-LTD



28QB-LTD



23CB



26QB

MODEL	19CB	21QB	22QB	23CB	26QB	29QB	31DS	31SK	32BH	21QB-LTD	28-LTD
CHASSIS	350-FORD	4500-CHEVY / 350-FORD	4500-CHEVY / 350-FORD	4500-CHEVY / 350-FORD	4500-CHEVY / 450-FORD	4500-CHEVY / 450-FORD	450 FORD	450 FORD	450 FORD	4500-CHEVY / 350-FORD	4500-CHEVY / 450-FORD
ENGINE	V8 - 5.4L	V8 - 6.0L / V10 - 6.8L	V8 - 6.0L / V10 - 6.8L	V8 - 6.0L / V10 - 6.8L	V8 - 6.0L / V10 - 6.8L	V8 - 6.0L / V10 - 6.8L	V10-6.8L	V10-6.8L	V10-6.8L	V8 - 6.0L / V10 - 6.8L	V8 - 6.0L / V10 - 6.8L
HORSE POWER	255	324 / 305	324 / 305	324 / 305	324 / 305	324 / 305	305	305	305	324 / 305	324 / 305
TORQUE	350	373 / 420	373 / 420	373 / 420	373 / 420	373 / 420	420	420	420	373 / 420	373 / 420
WHEEL BASE	138"	159" / 158"	169" / 168"	183" / 182"	191" / 190"	209" / 208"	223"	223"	223"	159" / 158"	209" / 208"
GVWR* (LBS.)	11,500	14,200 / 12,500	14,200 / 12,500	14,200 / 12,500	14,200 / 14,500	14,200 / 14,500	14,500	14,500	14,500	14,200 / 12,500	14,200 / 14,500
GCWR* (LBS.)	13,000	20,000 / 18,500	20,000 / 18,500	20,000 / 18,500	20,000 / 22,000	20,000 / 22,000	22,000	22,000	22,000	20,000 / 18,500	20,000 / 22,000
CW* (APPROX. LBS.)	9,040	9,100 / 9,260	9,946 / 10,000	9,864 / 10,058	10,750 / 10,864	11,000 / 11,108	11,810	11,600	12,316	9,100 / 9,260	10,470 / 10,500
CCC (APPROX. LBS.)	2,460	5,100 / 3,240	4,254 / 2,500	4,336 / 2,442	3,450 / 3,636	3,200 / 3,392	2,690	2,900	2,184	5,100 / 3,240	3,730 / 4,000
GAWR FRONT (LBS.)	4,050	4,600 / 4,600	4,600 / 4,600	4,600 / 4,600	4,600 / 5,000	4,600 / 5,000	5,000	5,000	5,000	4,600 / 4,600	4,600 / 5,000
GAWR REAR (LBS.)	7,800	9,600 / 8,500	9,600 / 8,500	9,600 / 8,500	9,600 / 9,600	9,600 / 9,600	9,600	9,600	9,600	9,600 / 8,500	9,600 / 9,600
INTERIOR HEIGHT	6' 11"	6' 11"	6' 11"	6' 11"	6' 11"	6' 11"	6' 11"	6' 11"	6' 11"	6' 11"	6' 11"
EXTERIOR WIDTH	8' 4"	8' 4"	8' 4"	8' 4"	8' 4"	8' 4"	8' 4"	8' 4"	8' 4"	8' 4"	8' 4"
EXTERIOR HEIGHT (W/ A/C)	10' 10"	10' 10"	10' 10"	10' 10"	10' 10"	10' 10"	10' 10"	10' 10"	10' 10"	10' 10"	10' 10"
EXTERIOR LENGTH (W/ HITCH)	21'-6"	23'-11" / 23'-6"	24'-10" / 24'-5"	26'-1" / 25'-8"	28'-5" / 28'-0"	31'-1" / 30'-8"	32'-6"	32'-6"	32'-6"	23'-11" / 23'-6"	30'-9" / 30'-4"
HITCH WEIGHT (LBS.)	3,500	5,000	5,000	5,000	5,000	5,000	5,000	5,000	5,000	5,000	5,000
FUEL CAPACITY (GAL.)	40	57 / 55	57 / 55	57 / 55	57 / 55	57 / 55	55	55	55	57 / 55	57 / 55
LP CAPACITY (LBS.)	40	68	68	68	68	68	68	68	68	68	68
FRESH WATER CAPACITY (GAL.)	50	50	50	50	50	50	50	50	50	50	50
WATER HEATER CAPACITY (GAL.)	6	6	6	6	6	6	6	6	6	6	6
GREY TANK CAPACITY (GAL.)	28	25	28	28	25	29	29	29	34	25	29
BLACK TANK CAPACITY (GAL.)	22	22	22	22	29	29	29	29	29	22	29
EXTERIOR STORAGE (CU. FT.)	79	92	92	93	84	112	100	100	76	89	100
AWNING LENGTH (FT.)	13'	15'	16'	17'	15'	16'	21'	21'	11'	15'	15'

*Please refer to the back cover regarding important information concerning vehicle weights.

STANDARD EQUIPMENT WARRANTY

- Motorhome - 12 Month/ 12,000 mile limited warranty
- Ford Chassis - 36 month/ 36,000 mile bumper-to-bumper warranty
- Ford Powertrain - 60 month/ 60,000 mile warranty
- Chevy Chassis - 36 month/ 36,000 mile bumper-to-bumper warranty
- Chevy Powertrain - 60 month/ 100,000 mile warranty

Freelander Value Package

(N/A LTD Models)

- Back-up Camera and Monitor
- Power Patio Awning
- 50 Gallon Fresh Water Tank (Standard on LTD models)
- Towing Hitch
- Hi-Gloss Fiberglass Sidewalls
- Slide-out Awning Toppers (Where Applicable)
- Frosted Shower Door
- Guardian 40G Series Gas Generator (Standard on LTD models)
- 80 Inch length bed

INTERIOR APPOINTMENTS

- Residential Hardwood Cabinet Doors & Drawers
- Oil Rubbed Bronze Hardware
- Upgraded Linoleum Flooring Thru out
- Hardboard Ceiling Panels (Soft Touch Look)
- Pancake Lights Thru Out
- Pleated Night Shade Window Treatments
- High Quality Upholstery
- Dinette (N/A 19CB)
- Jackknife Sofa (N/A 19CB, 21QB, 21QB-LTD, 22QB, 23CB)
- Bench Sofa and Pedestal Table (19CB only)
- Small Booth Dinette/Convertible Sofa (23CB only)
- Interior Safety Grab Handle
- Conveniently Placed Light Switches
- Cable TV Prep

GALLEY

- 1-Piece Thermofoil Countertops
- Single Bowl Stainless Steel Kitchen Sink (19CB, 21QB, 22QB, 23CB only)
- Double Bowl Composite Kitchen Sink (N/A 19CB, 21QB, 22QB, 23CB)
- Hi-rise Faucet
- 3-Burner Gas Range
- Microwave Oven
- Power, Lighted Range Hood
- Double Door Refrigerator/ Freezer
- Residential Metal Drawer Glides
- Flip-up Countertop Extensions (Select Models)

SLEEPING

- Queen Bed - 60x80 (N/A 19CB, 23CB)
- Bunk Beds - 32x74 (32BH only)
- Double Bed - 54x80 (19CB, 23CB only)
- Bed spread (N/A 19CB, 21QB, 21QB-LTD, 22QB, 23CB & 26QB)
- Fabric Covered Mattress (19CB, 21QB, 21QB-LTD, 22QB, 23QB & 26QB)
- Cab over Bunk
- Solid Privacy Door (N/A 19CB, 21QB, 21QB-LTD, 22QB & 23CB)
- Shirt Closet and/or Wardrobe
- Bedroom TV Prep (N/A LTD Models) - (Mounting Backer, Power outlet, Cable Hook-up)

ELECTRICAL/HEATING/AC

- "Coach Command" Systems Control Center
- 30 amp Power Cord
- 55 amp, 12 volt Power Converter
- Auxiliary Coach Battery
- GFI Circuit
- Battery Disconnect
- Wall Mounted Thermostat
- 13,500 BTU NON-Ducted Roof A/C (19CB, 21QB, 21QB-LTD & 23CB)
- 13,500 BTU "Even Cool" Ducted Roof A/C (N/A 19CB, 21QB, 21QB-LTD & 23CB)
- 30K BTU Ducted E.I. Furnace (28QB-LTD, 26QB, 29QB, 31DS, 31SK, 32BH)
- 20K BTU Ducted E.I. Furnace (19CB, 21QB, 21QB-LTD, 22QB & 23CB)
- Guardian 40G Series Gas Generator

SAFETY EQUIPMENT

- Propane Leak Detector/ Alarm
- Smoke Detector/ Alarm
- Carbon Monoxide Detector/ Alarm
- Fire Extinguisher
- Dead Bolt Lock Entrance Door
- Multiple Seat Belt Locations
- Travel Easy, Roadside Assistance

BATH AND PLUMBING

- Foot Pedal Toilet
- Bathroom Power Vent Fan
- Molded Tub Surround
- Frosted Shower Door (N/A 21QB-LTD)
- Shower Curtain (21QB-LTD only)
- Shower Head with Flexible Hose Extension
- Shower Skylight
- Composite Single Bowl Lav Sink
- Vanity Mirror
- Hand Towel Ring, Toilet Paper Holder, Robe and Towel Hooks
- On-Demand Water Pump
- 6-Gallon Gas E.I. Water Heater
- Tuff-Pex Plumbing Supply Lines
- 50 Gallon Fresh Water Tank

EXTERIOR/CONSTRUCTION/ CHASSIS

- Laminated Steel Framed Floor
- 2" Laminated Aluminum Framed Sidewalls
- Laminated Aluminum Framed Crowned with TPO Roof Membrane
- Fiberglass Exterior Sidewalls (LTD Models only)
- Azdel Superlite Composite Substrate in Sidewall
- Exterior Vinyl Graphics
- 80" Radius Entrance Door With Window and Screen Door
- Integrated Drop-Down Entry Step
- Steel Step Well with Built-in Easy Access Battery Compartment
- Manual Patio Awning (LTD Models only)
- Safety Glass Windows
- Extra Large Warehouse Storage Compartment (Selected Models only)
- Exterior Safety Grab handle
- Patio Light
- 110 volt, GFI Protected Exterior Receptacles
- Campside Coax Connection
- Privacy Drape- Lower Cab
- Driver & Passenger Air Bags
- Cruise Control
- Tilt Steering Wheel
- Dash Air Conditioning
- Reclining Pilot & Passenger Seats
- Power Windows & Locks
- Keyless Entry (Ford E450 Chassis only)
- Dual 12 volt Power Ports
- Upgrade Exterior Mirrors
- Towing Hitch w/ 7 Way Plug
- Hub Caps
- Rear Bumper
- Alum Running Boards
- TV Power Boost Antenna
- Large Button Radio w/ Dash Speakers

OPTIONAL EQUIPMENT

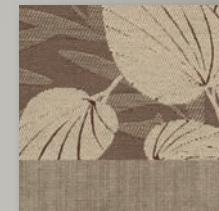
- 32" LCD TV w/ DVD - Coach (31DS, 31SK only)
- 24" LCD TV w/ DVD - Coach (N/A 31SK, 31DS & 32BH with Ent. Package)
- Onan 4.0 KW Gas Generator
- Stainless Steel Wheel Inserts
- Air Assist Suspension (Ford E450 only, Mandatory on 32BH and 31DS)
- Entertainment Package (32BH Only) 24" LCD TV w/ DVD - Coach & Bunk LCD TV's w/ DVD Player's
- Exterior Entertainment Center with 32" LCD TV/ Stereo/DVD/Speakers (31DS, 31SK only)
- Exterior Entertainment Center with 24" LCD TV/ Stereo/DVD/Speakers (21QB, 22QB, 26QB, 29QB, 32BH)
- Child Safety Net & Ladder

- Rear Ladder
- Spare Tire
- Campin' Cozy Package (N/A LTD Models) - Dual pane windows and Heated Tanks
- Canadian Z240 RV Compliance (Motorhome conversion only)
- Canadian Compliance (Speedo / Lights)
- Sofa and Two Tables (22QB only)
- Exterior Camp Kitchen (31DS, 31SK only)
- Heated Tanks
- Back-up Camera w/ Stereo (LTD Models only)
- Power Patio Awning (LTD Models only)

DECORS



BARK



CHASWORTH CREME



MALT



BRAZILIAN CHERRY CABINETRY



FREE ONE YEAR MEMBERSHIP –
COACHMEN OWNERS' ASSOCIATION!

Coachmen is proud to sponsor the largest manufacturer sponsored camping club in North America... Coachmen Owners' Association (COA). COA provides you a world of ways to enjoy your RV. This is *FUN ON OVERDRIVE* and provides: Free Trip Routing, Exciting Tours & Rallies, Free Campground Directory, Local/State Club Activities, Easy RVing Magazine Free, Theme Park Discounts, Fuel Discounts, Free onebigplanet® Memberships with discounts at 180,000 merchants and Much More!

Every new Coachmen RV buyer is eligible for a 1 year FREE membership in the Coachmen Owners' Association. It all adds up to an easy ownership experience!



TRAVEL EASY™ ROADSIDE ASSISTANCE

RVing is easier with Coachmen's Travel Easy™ Roadside Assistance provided FREE the first year of ownership to those who purchase a New Coachmen RV. Administered by Coach-Net, this service provides you with 24/7 operational, technical and emergency road service coverage. Also included is towing, fuel delivery, jump starts, lockout service, tire changes, mobile mechanic and unlimited technical assistance. Anywhere. Anytime. Travel Easy™ is the security of knowing that help is an easy phone call away.

***GVWR (Gross Vehicle Weight Rating):** The maximum permissible weight of the unit, including the unloaded vehicle weight (UVW) plus all fluids, cargo, optional equipment and accessories. For safety and product performance, do not exceed the GVWR. ***CW (Curb Weight):** The weight of the unit without factory or dealer installed options, plus allowance for the weight of full fuel capacity. The "payload capacity" for all other fluids, cargo, occupants, optional equipment, and accessories can be determined by subtracting the CW from the GVWR. ***GCWR (Gross Combined Weight Rating):** The maximum total weight of the loaded unit, plus a tow vehicle. This includes the weight of both the unit and tow vehicle, fuel for each, all other fluids, cargo, occupants, optional equipment and accessories. **Wider Widths:** Numerous Coachmen floorplans feature the "wide body" design concept, which gives you significantly enhanced interior living space and innovative floorplans.

Each Coachmen RV is weighed at the manufacturing facility prior to shipping. A label identifying the dry weight of the actual unit and the available cargo and occupant capacity is applied to every Coachmen RV prior to leaving our facilities.

Floor plans and specifications are based on the latest product information. Forest River, Inc. reserves the right to make changes in drawings and specifications at any time without notice and assumes no responsibility for any errors in the site. The model number does not necessarily reflect the overall length of a particular unit.

In making your purchase decision, you should be aware that a few states restrict access on some or all

roads within the state to vehicle with a maximum 96-inch width, although special road usage permits may be available. Vehicles up to 102-inches in some width are permitted in the vast majority of states. You should confirm the road usage laws in the states of interest to you before making your purchase decision. If width is of concern to you, we invite you to consider the broad array of other Coachmen models offers in the standard 96-inches width.

Important Note: All capacities are approximate, and all dimensions are nominal. Coachmen motorhomes are designed to allow for a wide variety of uses, extended trips with two people or short trips with multiple people. Accordingly, each unit allows ample room for sleeping, seating, fluids and cargo. While the customer is the beneficiary of this design, the customer also bears the responsibility to select the proper combination of passengers, cargo, load, and tow vehicle without exceeding the chassis weight capabilities. Consumer may need additional braking capacity to tow loads greater than 1,000 pounds.

Seat belts should always be worn for passenger safety. Seat belts are provided at most locations to allow convenience in selecting which seat to occupy. However, it is not intended that all seating positions equipped with a seat belt may be occupied while the vehicle is in motion, without regard to other weight factors.

All Coachmen motorhomes are designed to ensure that the number of passengers allowed while the vehicle is in motion will always at least equal the stated sleeping capacity. Though extra seat belts may be provided, for your safety and the proper operation of your vehicle, limit your passengers to the number allowed by the Net Carrying Capacity of your vehicle.



Forest River, Inc. encourages our customers to purchase their Forest River products whenever possible for the following reasons:

- 1) Forest River, Inc. dealers are independently owned and operated businesses so priority service and scheduling is at their discretion and is often provided to customers that purchased their unit at that dealership.
- 2) Purchasing locally allows customers to establish meaningful relationships with a dealer, enhancing the RV experience through assistance with product questions, user tips or RV regulations for your state or country, and much more!
- 3) Canadian customers must meet requirements to bring an RV purchased out of the country to their home. These requirements may involve additional inspections and certifications, taxes and fees. Your local Canadian Dealer is a professional at meeting these requirements.
- 4) Scheduling timely warranty repairs and adjustments through a local dealership provides far greater flexibility and convenience to you, the customer!

It is the goal of Forest River, Inc. that all of our RV owners fully enjoy the RV experience and that customer satisfaction meets or exceeds their expectations!



Coachmen

A division of Forest River, Inc.

Coachmen Recreational Vehicle Company
423 N. Main St., P.O. Box 30
Middlebury, IN 46540

Your FREELANDER Dealer



Learn More
Scan this barcode using a QR Reader on your smart phone to learn more about Forest River.



A Berkshire Hathaway company.

To learn more about Coachmen RV and our products and see how Coachmen is making the easy life easier, visit www.coachmenrv.com

All information contained in this brochure is believed to be accurate at the time of publication. However, during the model year, it may be necessary to make revisions and Coachmen reserves the right to make all such changes without notice, including prices, colors, materials, equipment and specifications as well as the addition of new models and the discontinuance of models shown in this brochure. Therefore, please consult with your Coachmen dealer and confirm the existence of any materials, design or specifications that are material to your purchase decision.

Printed in USA

© Copyright 2012 Coachmen RV, a Division of Forest River Inc., A Berkshire Hathaway company. All Rights Reserved