



OUTLAW

CLASS-A GAS MOTORHOME SPECIFICATIONS





3611 FLOORPLAN / LUXURY CHERRY WOOD / DESERT CLAY DÉCOR



LUXURY CHERRY



VINTAGE MAPLE



BEACH COMBER



DESERT CLAY



GOLD MEDALLION



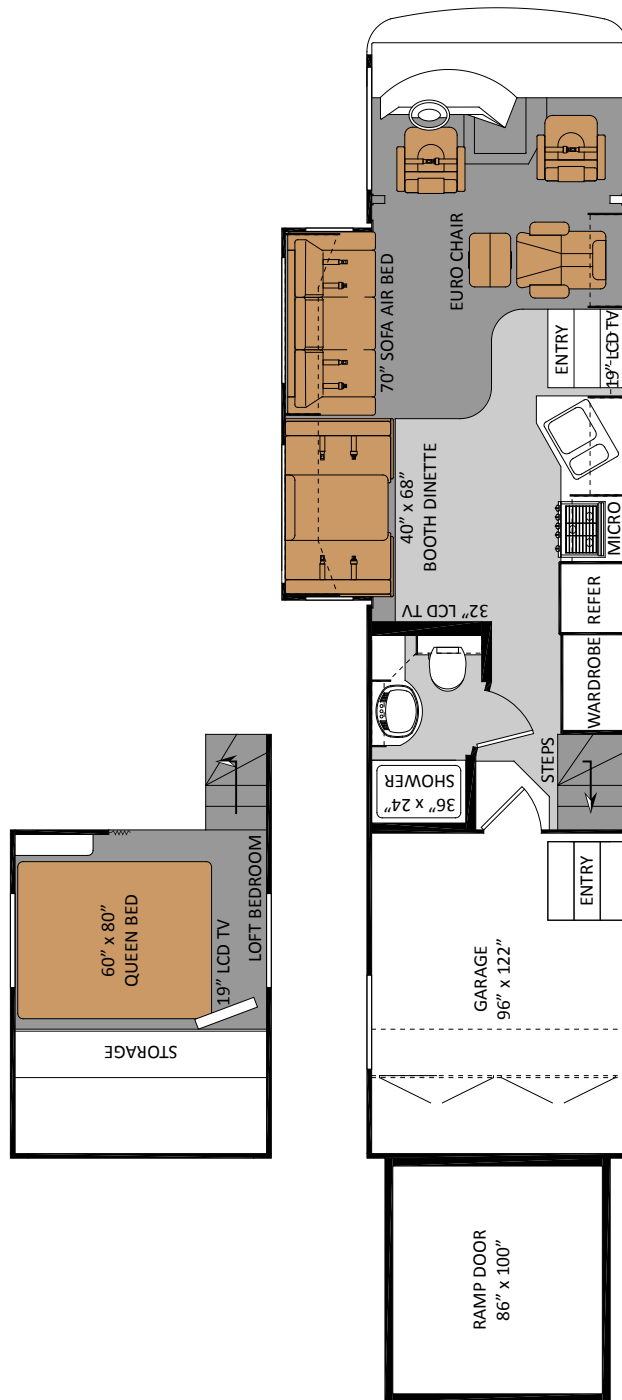
PARTIAL PAINT



HIGH VOLTAGE FULL BODY PAINT



FIRE OPAL FULL BODY PAINT



3611

MODEL

Chassis	Ford
Gross Vehicle Weight Rating (GVWR)	22,000
Gross Combined Weight Rating (GCWR)	26,000
Wheel Base	242"
Exterior Length (without ladder)	37'-4"
Exterior Height (with air conditioning)	12'-11"
Exterior Width (without mirrors)	101"
Interior Height	82"
Awning Size	21'
Fuel (gallons)	80
LPG (pounds)	104
Fresh Water (gallons)	65
Grey Water (gallons)	47
Waste Water (gallons)	47
Water Heater (gallons)	6
Furnace (BTUs)	35,000
Exterior Storage Capacity (cubic feet)	131

3611

IMPORTANT - PLEASE READ: Information published within this brochure reflects product design, fabrication, material, components and specifications at the date of printing. If your vehicle was manufactured before this brochure was published this information may not be accurate because vehicles assembled before the brochure was published may not have the same design, fabrication, materials, components and specification as represented in the brochure. If your vehicle was manufactured after this sales brochure was published the representations may not be accurate because, for product improvement reasons, we reserve the unilateral right, at any time, without prior notice, to make changes in product design, material, components and specifications. The date the brochure was published (i.e. "Julian date") is set forth on the last page of the brochure. **IF CERTAIN INFORMATION PUBLISHED WITHIN THIS BROCHURE IS SIGNIFICANT TO YOUR PURCHASING DECISION, PLEASE CONSULT WITH YOUR SELLING DEALERSHIP TO CONFIRM THAT THE INFORMATION IS ACCURATE WITH RESPECT TO THE VEHICLE YOU ARE CONSIDERING PURCHASING.** Photographs in the brochure may depict optional equipment or may only be available in certain floor plans. We reserve the right to make changes in prices and models and to discontinue models without notice or obligation. Components, appliances and features may differ to conform to local codes. Due to EPA environmental restrictions, engine power and torque ratings may change during any model year. The Thor Motor Coach logo and its design are registered trademarks. Other products and company names are trademarks and/or registered trademarks of their respective manufacturer. While the color of the motorhome's exterior and the interior fabrics depicted in this brochure are fair and reasonable depictions, the colors depicted may not be exact match of the actual colors because of variances in photo processing and printing. Component part and appliance manufacturers issue limited warranties covering portions of the vehicle not covered under the limited warranty we issue. To learn specific details regarding warranty coverage please consult your selling dealership or review the warranty packet inside the vehicle.

STANDARD FEATURES AND OPTIONS

CONSTRUCTION & EXTERIOR

- Fiberglass Front Cap
- Black Framed Dual Pane Windows
- Partial Body Paint with Deluxe Graphics
- Smooth High Gloss Fiberglass Sidewalls
- Power Patio Awning
- Rear Spot Lights
- Double Electric Exterior Entrance Steps
- Full Basement Pass-Through Storage
- Lighted Rotocast Storage Compartments
- Locking Exterior Storage Doors with Gas Strut Supports
- Remote Fuel Filling Station with Pump and Nozzle
- Exterior Shower

CONSTRUCTION & EXTERIOR OPTIONS

- Full Body Paint Package

AUTOMOTIVE & COCKPIT

- 22.5" Tires with Brite Aluminum Wheels
- 5,000 lbs Trailer Hitch
- Emergency Start Circuit
- One Touch Fully Automatic 4-Point Leveling Jacks
- Windshield Privacy Shade
- Electric Sunvisor
- Sun Visors
- Reclining Swivel Driver and Passenger Captains Chairs
- Map Light
- Side Mount Power Mirrors with Heat
- Back-up Monitor System with Audio
- AM/FM Radio with In-Dash CD Player
- Cruise Control
- Dash Fans

GARAGE

- Drop Down Ramp Door with Lift Assist
- Radius Entry Door
- Tread Plate Non-Slip Flooring

- Tie Down Tracks
- Fantastic® Power Vent
- Air Ventilation Sidewall Vents
- Stainless Storage Cabinet
- Mini Blinds

GARAGE OPTIONS

- Electric Lift Queen Bed
- 19" LCD HDTV

INTERIOR

- Dual 13,500 BTU Ducted Low Profile Air Conditioners
- Solid Wood Raised Panel Cabinet Doors
- Ball Bearing Drawer Guides in Kitchen
- Day / Night Shades in Living Area and Loft
- Mini Blind in Kitchen
- 100% Nylon Carpeting with Stain Treatment
- Vinyl Tile Flooring in Kitchen and Bath
- Leatherette Sofa / Air Bed
- Euro Recliner
- Privacy Curtain in Loft

GALLEY

- 8 CuFt Large Flush Mount Double Door Refrigerator
- Convection Microwave with Cooktop
- Lighted Power Range Hood
- Sink Cover
- Pantry

ENTERTAINMENT

- Mid-Ship 32" LCD HDTV
- 19" LCD HDTV Above Entry Door
- 19" LCD HDTV in Loft
- Video Package (DVD Player and Control Center)
- Cable TV / Satellite Control Center
- Satellite Dish Prep
- TV Hook-up in Garage

- Premium Sound System
- Exterior TV Prep

ENTERTAINMENT OPTIONS

- Exterior Entertainment Center with 26" LCD HDTV

BED & BATHROOM

- Queen Mattress in Loft
- Bedspread, Pillow Shams & Pillows
- Foot-Flush Toilet
- Shower with Glass Shower Door
- Fantastic® Power Vent in Bathroom
- Skylight in Bathroom

SAFETY & CONVENIENCE

- Entry Door with Deadbolt Lock
- Monitor Panel with LPG Readout
- Carbon Monoxide, LPG and Smoke Detector
- Fire Extinguisher

ELECTRICAL & PLUMBING

- Dual 13,500 BTU Ducted Low Profile Air Conditioners
- 35,000 BTU Electronic Ignition Furnace
- 50-amp Service
- Onan 5.5 (5,500 kilowatts) Marquis Gold Generator
- Battery Disconnect Switch
- Emergency Start Circuit
- Dual 6-Volt Auxiliary House Batteries
- 6-gallon Gas Water Heater with Electric Ignition
- Water Heater Bypass Kit
- Black Tank Flush
- Heated Enclosed Holding Tanks
- Washer / Dryer Prep in Garage
- Exterior Shower



OUTLAW



SCAN THE QR CODE WITH YOUR SMART PHONE

YOUR LOCAL TMC DEALER:



Go RVing.

P.O. BOX 1486 • ELKHART, IN 46515 • CUSTOMER SERVICE: 877-855-2867 • SALES DEPARTMENT: 800-860-5658 • OUTLAWRV.COM

COPYRIGHT THOR MOTOR COACH, INC. © 2011 [12/2011]

