



Class A Diesel

Life Doesn't Get Any Better

There is no competition to a Tuscany when it comes to luxury and sophistication. Even more so in its price category. You will enjoy a combination of high-end luxury amenities and elegant



automotive design. Power-packed features. Designed and backed by the industry leader. With Tuscany, they'll know you have arrived.





Feature Packed. Thor Backed

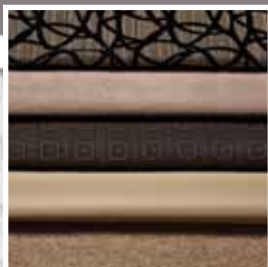
A combination of high quality craftsmanship and elegant design make the Tuscany the very best. One look and you'll agree, contemporary decor and old world craftsmanship set Tuscany apart from other Class A diesels.



LUXURY CHERRY
WITH COFFEE LATTE ACCENT
ENTERTAINMENT CENTER



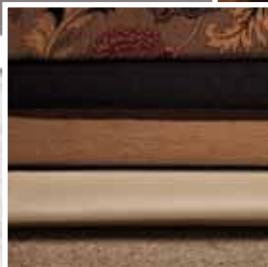
DISTRESSED VINTAGE MAPLE
WITH ESPRESSOS ACCENT
ENTERTAINMENT CENTER



BLACK TRUFFLE



COBBLESTONE



GEMSTONE





45LT FLOORPLAN / DISTRESSED VINTAGE MAPLE WOOD / BLACK TRUFFLE DÉCOR

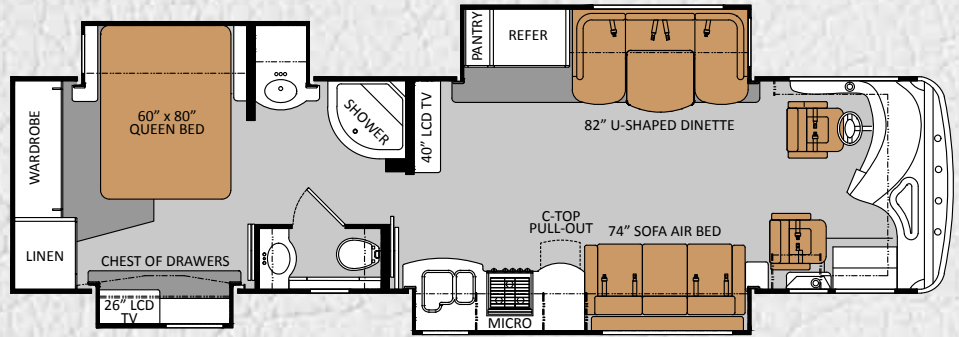


45LT FLOORPLAN / DISTRESSED VINTAGE MAPLE WOOD / BLACK TRUFFLE DÉCOR



36UF

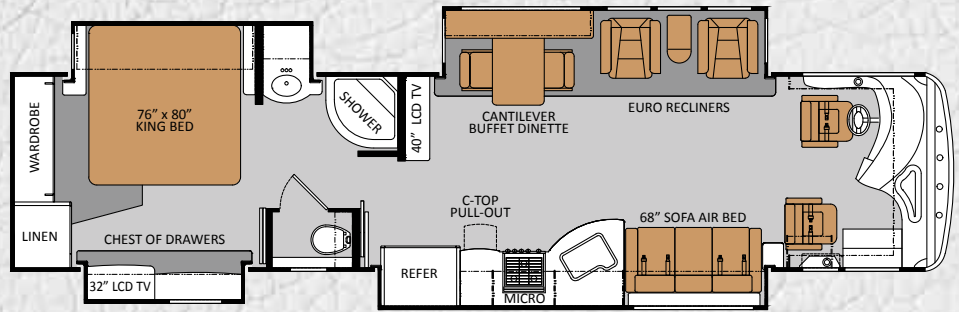
Chassis	Freightliner XC
Gross Vehicle Weight Rating (GVWR)	32,350
Gross Combined Weight Rating (GCWR)	42,350
Wheel Base	228"
Exterior Length (without ladder)	37'-2"
Exterior Height (with air conditioning)	12'-9"
Exterior Width (without mirrors)	101"
Interior Height	85"
Awning Size	19'
Fuel (gallons)	100
LPG (pounds)	126
Fresh Water (gallons)	91
Grey Water (gallons)	51
Waste Water (gallons)	51
Water Heater (gallons)	10
Furnace (BTUs)	(2) 20,000
Exterior Storage Capacity (cubic feet)	175



36UF

40LX

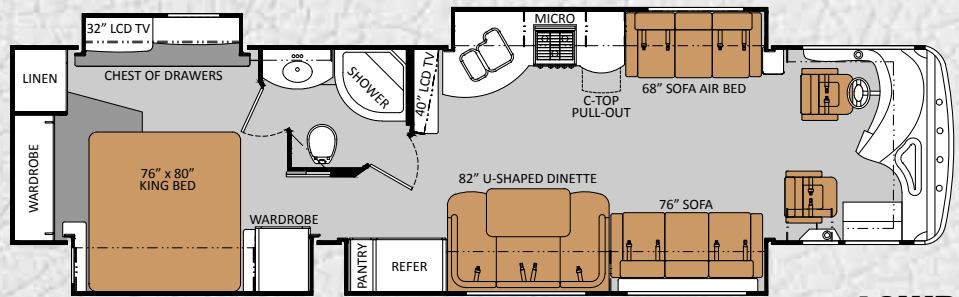
Chassis	Freightliner XC
Gross Vehicle Weight Rating (GVWR)	32,350
Gross Combined Weight Rating (GCWR)	42,350
Wheel Base	266"
Exterior Length (without ladder)	40'-11"
Exterior Height (with air conditioning)	12'-9"
Exterior Width (without mirrors)	101"
Interior Height	85"
Awning Size	21'
Fuel (gallons)	100
LPG (pounds)	126
Fresh Water (gallons)	91
Grey Water (gallons)	51
Waste Water (gallons)	51
Water Heater (gallons)	10
Furnace (BTUs)	(2) 20,000
Exterior Storage Capacity (cubic feet)	215



40LX

40WD

Chassis	Freightliner XC
Gross Vehicle Weight Rating (GVWR)	32,350
Gross Combined Weight Rating (GCWR)	42,350
Wheel Base	266"
Exterior Length (without ladder)	40'-11"
Exterior Height (with air conditioning)	12'-9"
Exterior Width (without mirrors)	101"
Interior Height	85"
Awning Size	16'
Fuel (gallons)	100
LPG (pounds)	126
Fresh Water (gallons)	91
Grey Water (gallons)	51
Waste Water (gallons)	51
Water Heater (gallons)	10
Furnace (BTUs)	(2) 20,000
Exterior Storage Capacity (cubic feet)	215



40WD

IT'S WHAT YOU *don't see* THAT MATTERS.

CHASSIS: Freightliner XC Raised Rail Chassis with Cummins ISC or ISL engines, 160-amp, 12-volt Alternator. In-Block, 1,000 Watt Engine Heater. 6-Speed Allison MH-3000 Automatic Transmission. 22.5" Radial Tires with Aluminum Wheels. Full Air Brakes. Air-Ride Suspension. Haldex Purest Air Plus Heated Air Dryer. Meritor Anti-Lock Brakes. Sachs Shock Absorbers. 10,000 lb Trailer Hitch. Fully Automatic 4 Point Leveling Jacks and more.

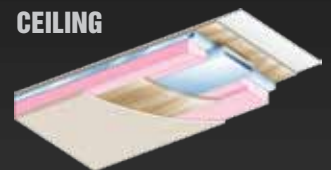


CONSTRUCTION: Walls feature an interior panel, 1-1/2" block foam insulation, lauan backer, exterior fiberglass and aluminum frame tubing. Ceilings are padded, feature lauan wood, have AC ducting, roof membrane is TPO material, insulated and aluminum tube framed. Floors feature carpet, porcelain tile, structure wood floor base, block foam laminated to weather resistant underbelly and steel rugged steel frame. All Thor Motor Coaches are built to higher standards, specifications and use only the highest quality materials.

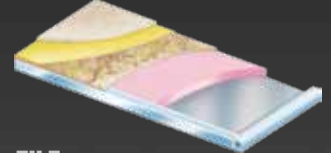
WALLS



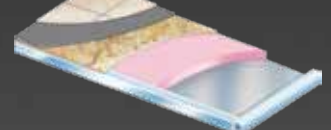
CEILING



CARPET

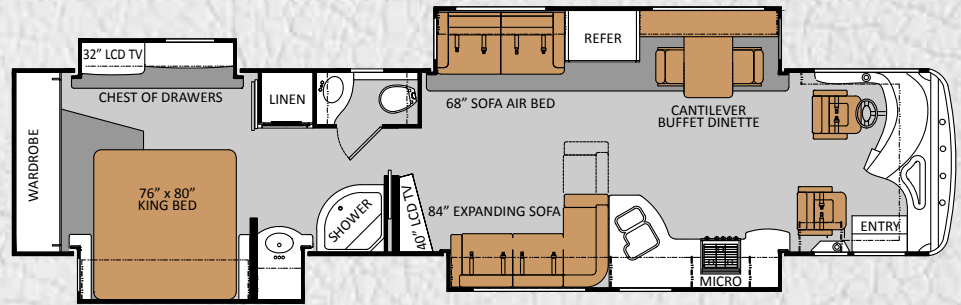


TILE



42FK

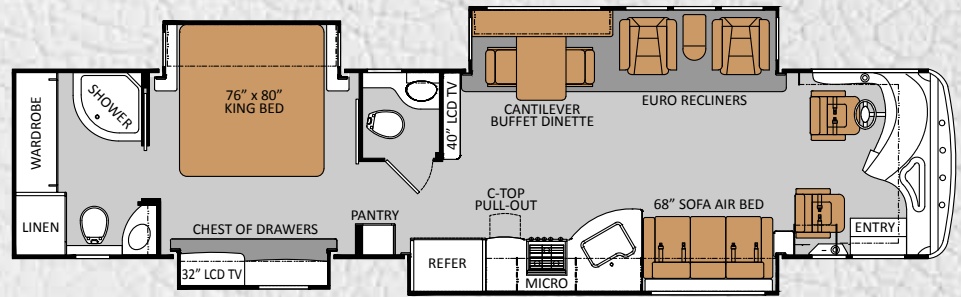
Chassis	Freightliner XC
Gross Vehicle Weight Rating (GVWR)	44,320
Gross Combined Weight Rating (GCWR)	54,320
Wheel Base	273"
Exterior Length (without ladder)	42'-11"
Exterior Height (with air conditioning)	12'-9"
Exterior Width (without mirrors)	101"
Interior Height	85"
Awning Size	21'
Fuel (gallons)	100
LPG (pounds)	126
Fresh Water (gallons)	91
Grey Water (gallons)	51
Waste Water (gallons)	51
Water Heater (gallons)	10
Furnace (BTUs)	(2) 20,000
Exterior Storage Capacity (cubic feet)	225



42FK

42RQ

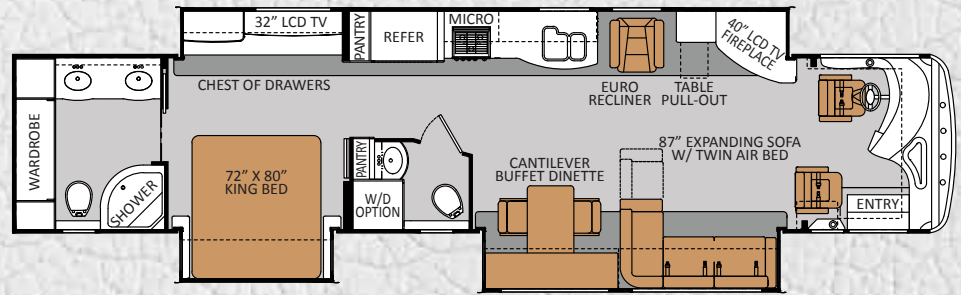
Chassis	Freightliner XC
Gross Vehicle Weight Rating (GVWR)	44,320
Gross Combined Weight Rating (GCWR)	54,320
Wheel Base	266"
Exterior Length (without ladder)	42'-4"
Exterior Height (with air conditioning)	12'-9"
Exterior Width (without mirrors)	101"
Interior Height	85"
Awning Size	15'-6"
Fuel (gallons)	100
LPG (pounds)	126
Fresh Water (gallons)	91
Grey Water (gallons)	51
Waste Water (gallons)	51
Water Heater (gallons)	10
Furnace (BTUs)	(2) 20,000
Exterior Storage Capacity (cubic feet)	215



42RQ

45LT

Chassis	Freightliner XC
Gross Vehicle Weight Rating (GVWR)	44,320
Gross Combined Weight Rating (GCWR)	54,320
Wheel Base	291"
Exterior Length (without ladder)	44'-10"
Exterior Height (with air conditioning)	12'-9"
Exterior Width (without mirrors)	101"
Interior Height	85"
Awning Size	19'
Fuel (gallons)	100
LPG (pounds)	126
Fresh Water (gallons)	91
Grey Water (gallons)	51
Waste Water (gallons)	51
Water Heater (gallons)	10
Furnace (BTUs)	(1) 20,000 / (1) 30,000
Exterior Storage Capacity (cubic feet)	260



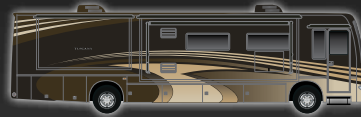
45LT



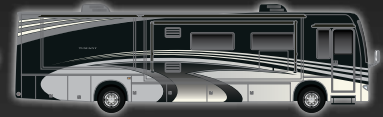
CREME BRULEE



MIDNIGHT EMBER



ROCKY ROAD



STORM SHADOW

IMPORTANT - PLEASE READ: Information published within this brochure reflects product design, fabrication, material, components and specifications at the date of printing. If your vehicle was manufactured before this brochure was published this information may not be accurate because vehicles assembled before the brochure was published may not have the same design, fabrication, materials, components and specification as represented in the brochure. If your vehicle was manufactured after this sales brochure was published the representations may not be accurate because, for product improvement reasons, we reserve the unilateral right, at any time, without prior notice, to make changes in product design, material, components and specifications. The date the brochure was published (i.e. "Julian date") is set forth on the last page of the brochure. IF CERTAIN INFORMATION PUBLISHED WITHIN THIS BROCHURE IS SIGNIFICANT TO YOUR PURCHASING DECISION, PLEASE CONSULT WITH YOUR SELLING DEALERSHIP TO CONFIRM THAT THE INFORMATION IS ACCURATE WITH RESPECT TO THE VEHICLE YOU ARE CONSIDERING PURCHASING. Photographs in the brochure may depict optional equipment or may only be available in certain floor plans. We reserve the right to make changes in prices and models and to discontinue models without notice or obligation. Components, appliances and the chassis may have been manufactured in a calendar year before the vehicle's designated model year. All capacities are approximate. The actual length of the vehicle may differ from that indicated in the brochure due to variances in the manufacturing processes and/or installed components. All dry weights are based on standard model features and do not include optional features or equipment. Components, appliances and features may differ to conform to local codes. Due to EPA environmental restrictions, engine power and torque ratings may change during any model year. The Thor Motor Coach logo and its design are registered trademarks. Other products and company names are trademarks and/or registered trademarks of their respective manufacturer. While the color of the motorhome's exterior and the interior fabrics depicted in this brochure are fair and reasonable depictions, the colors depicted may not be exact match of the actual colors because of variances in photo processing and printing. Component part and appliance manufacturers issue limited warranties covering portions of the vehicle not covered under the limited warranty we issue. To learn specific details regarding warranty coverage please consult your selling dealership or review the warranty packet inside the vehicle.

STANDARD FEATURES *and* OPTIONS

CHASSIS

- Freightliner XC Raised Rail Chassis
- 380-HP Cummins ISC Engine w/ 1,050 ft lb Torque (36UF, 40WD & 40LX)
- 450-HP Cummins ISL Engine with 1,250 ft lb Torque (42FK, 42RQ & 45LT)
- 6 Speed Allison MH-3000 Automatic Transmission
- 22.5" Radial Tires with Aluminum Wheels
- Full Air Brakes
- Air-Ride Suspension
- Exhaust Brake (36UF, 40WD & 40LX)
- 2 Stage Engine Brake (42FK, 42RQ & 45LT)
- Dual Fuel Fills
- Emergency Start Circuit
- Full Width Stainless Stone Guard with TUSCANY Emblem
- 10,000 lb Trailer Hitch
- One Touch Fully Automatic 4-Point Leveling Jacks

CONSTRUCTION & EXTERIOR

- Fiberglass Front and Rear Caps
- Tinted One Piece Windshield
- Black Framed Dual Pane Radius Corner Windows
- Full Body Paint w/ Gel Coat Wall
- Invisible Bra
- Color Coordinated Awning Package Including Electric Entry Door Awning and Electric Patio Awning with Remote Control
- Slide Out Topper Awnings
- Fog Lights
- Two Patio Lights (One each side)
- Full Basement, Pass-Through Storage
- Side-Hinged Locking Aluminum Compartment Doors
- Lighted Storage Compartments
- Rear Ladder

CONSTRUCTION & EXTERIOR OPTIONS

- Easy Slide Storage Tray
- Color Coordinated Window Awnings

AUTOMOTIVE & COCKPIT

- Electric Windshield Day/Night Privacy Shade
- Manual Side Day/Night Privacy Shades
- 6-Way Power UltraLeather Driver Seat
- 6-Way Power UltraLeather Oversized Passenger Seat w/ Electric Footrest

- Driver and Passenger Overhead Storage Cabinetry
- Drink Holders
- Map Lights
- VIP Smart Wheel (42FK, 42RQ & 45LT)
- Tilt/Telescoping Steering Column
- Front Mount Chrome Power Mirrors with Heat
- Electronic Cruise Control
- Air Horns
- Dash Fans
- Electric Step Cover

MULTIMEDIA

- 40" High Definition LCD TV in Living Room
- 26" High Definition LCD TV in Bedroom (36UF Only)
- 32" High Definition LCD TV in Bedroom (N/A 36UF)
- 32" High Definition LCD TV in Exterior Entertainment Center
- Digital Touch-Screen Multi-Media System with 3-Camera Color Back-Up Monitor
- Surround Sound Home Theater
- Satellite Dish Prep
- Cable TV/Satellite Control Center
- AM/FM Stereo/CD/DVD Player in Bedroom

MULTIMEDIA OPTIONS

- 32" High Definition LCD TV in Cockpit
- Winegard High Definition Automatic Satellite Dish

INTERIOR

- Solid Wood Raised Panel Cabinet Doors Throughout
- Solid Surface Countertops Throughout
- Day/Night Roller Shades in Living Area and Bedroom
- Porcelain Tile Flooring Throughout (N/A 40WD)
- Halogen Lighting in Living Area
- UltraLeather Expanding 'J' Lounge (42FK & 45LT)
- UltraLeather Jackknife Sofa Bed (40WD Only)
- UltraLeather Sofa/Air Bed (Driver Side) Replaces Euro Recliners (Optional 40LX & 42RQ, N/A 36UF & 45LT)

- UltraLeather Sofa/Air Bed (Passenger Side) (36UF, 40LX & 42RQ)
- Euro Recliners with End Table (40LX & 42RQ)
- Euro Recliner (45LT Only)
- Cantilever Buffet with Additional Storage and Four Chairs (2 Fixed and 2 Folding) (N/A 36UF & 40WD)
- U-Dinette (36UF & 40WD)
- King Bed with Pillow Top Mattress (N/A 36UF)
- Queen Bed with Pillow Top Mattress (36UF only)
- Bedspread with Throw Pillows

INTERIOR OPTIONS

- UltraLeather Sofa/Air Bed (Passenger Side) Replaces Expanding J'Lounge & Forces Driver Side Jackknife (42FK Only)
- Ultra Leather Theater Seating (42FK)
- Ensemble (Replaces Buffet & Euro Recliners) (40LX, 42RQ & 45LT)
- Dream Dinette Booth Dinette with Wood Edge Table (40LX & 42RQ)
- Two additional folding chairs (36UF & 40WD)
- Fireplace (STD 45LT, N/A 40WD)

KITCHEN

- Stainless Steel 12 Cu Ft Four Door Refrigerator with Icemaker (Optional 42FK & 45LT, N/A 42RQ)
- Stainless Steel Residential Refrigerator w/ In-Door Ice & Water Dispenser (42FK, 42RQ & 45LT)
- 3 Burner Cooktop
- 1.8 Cu Ft Stainless Steel Space Saver Microwave/Convection Oven
- Single Lever Faucet with Sprayer and Water Filter Faucet

ELECTRICAL & PLUMBING

- Dual 13.5 BTU Ducted Central Air Conditioning (36UF, 40LX & 40WD)
- Triple 13.5 BTU Ducted Whisper Air System (42FK, 42RQ & 45LT)

- Fantastic® Power Vent with Rain Sensor and Remote in Kitchen
- Central Vacuum System with Toe kick Dustpan
- 50-amp, 120-volt Service
- Onan 8.0 kW Quiet Diesel Generator
- 2000-watt inverter / 100-amp Converter
- (4) 6-volt Auxiliary House Batteries
- Battery Disconnect
- Carbon Monoxide, LP gas, and Smoke Detectors
- Monitor Panel with LPG Readout
- 10-gallon Gas/Electric Water Heater w/ Electric Ignition & Blending Valve
- Water Heater By-Pass Kit
- Washer/Dryer Prep
- Full Height Shower with Door
- Skylight in Shower
- Foot Flush Porcelain Toilet w/ Sprayer
- Enclosed Heated Potable and Holding Tanks
- Black Tank Flush
- E-Z Flow Water Panel with Whole-House Water Filtration
- Exterior Shower
- 12V Power Cord Reel (42FK, 42RQ & 45LT)

ELECTRICAL & PLUMBING OPTIONS

- Stacking Washer and Dryer (36UF, 42FK, 42RQ & 45LT)
- (2) Heat pump (36UF, 40WD & 40LX)
- (3) Heat pump (42FK, 42RQ & 45LT)
- Energy Management System (STD 42FK, 42RQ & 45LT)
- Auto Generator Start

YOUR LOCAL TMC DEALER:



Go RVing.



SCAN THE QR CODE WITH YOUR SMART PHONE

P.O. BOX 1486 • ELKHART, IN 46515 • CUSTOMER SERVICE: 877-855-2867 • SALES DEPARTMENT: 800-860-5658 • TUSCANYRV.COM

COPYRIGHT THOR MOTOR COACH, INC. © 2011 [12/2011]

