



*Class A Diesel*

*Diesel Pusher: More for Less*

*Now you CAN have it all! Palazzo is an all-new concept in modern Class A diesel motorhome design. A powerful 300 HP Cummins engine is more fuel efficient than anything in its class.*



*Palazzo's meticulous detailing, quality components and contemporary styling are first class. This coach is backed by Thor Industries, the nation's largest manufacturer of recreational vehicles.*

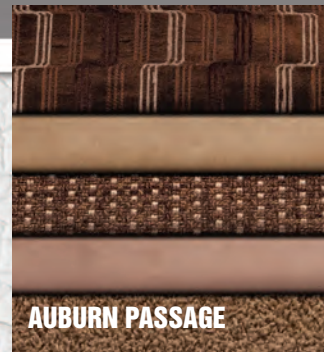


Welcome home!

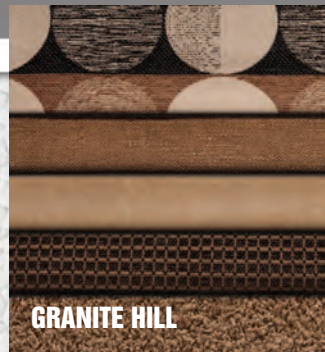
High luxury features and construction at a great value. That's Palazzo! You'll notice a large residential refrigerator and microwave, an extra-large shower, auto-gen start feature, a powerful 6000W Onan diesel generator, tall pass-through mega-sized storage com-



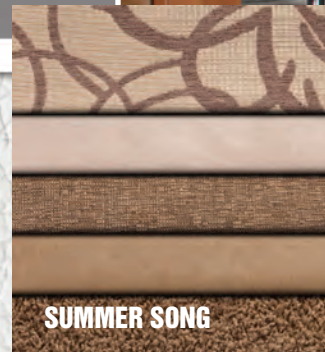
partments, low-profile slide-tray, an 18' power awning and much more – all standard features and equipment. More color, fabric and optional equipment also available. See your dealer for the latest specifications and pricing.



AUBURN PASSAGE



GRANITE HILL



SUMMER SONG



33.1 FLOOR PLAN / VINTAGE MAPLE WOOD / GRANITE HILL DECOR



33.1 FLOOR PLAN / VINTAGE MAPLE WOOD / GRANITE HILL DECOR



33.1 FLOOR PLAN / VINTAGE MAPLE WOOD / GRANITE HILL DECOR



MELROSE MAPLE



VINTAGE MAPLE



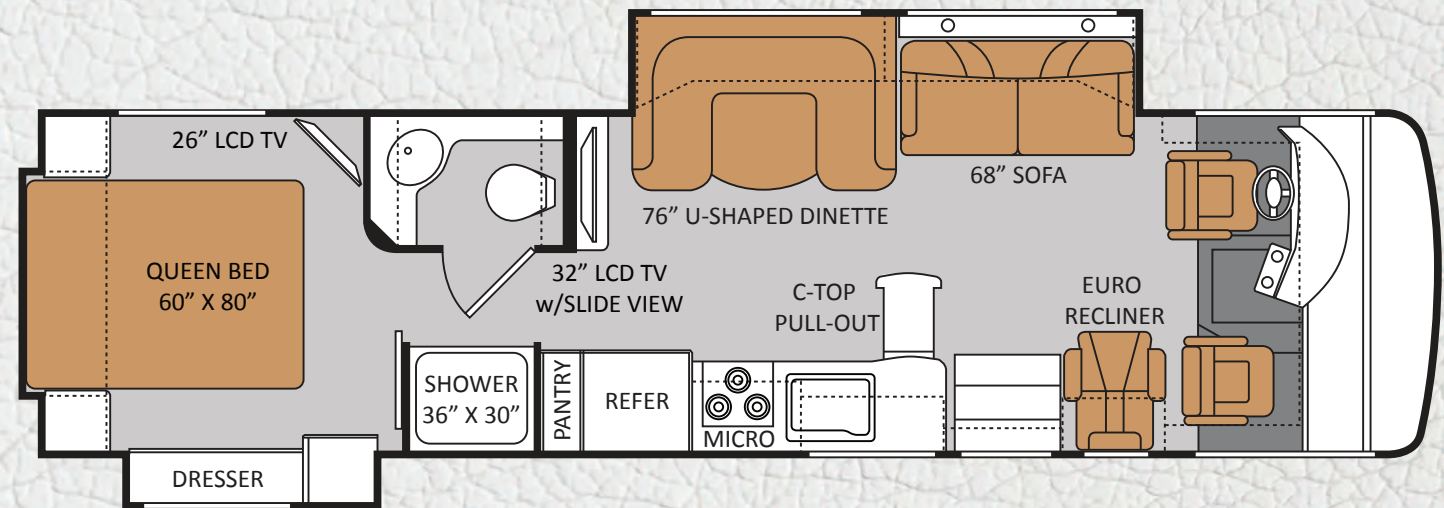
LUXURY CHERRY



PASS-THROUGH STORAGE WITH LOW PROFILE SLIDE TRAY

### 33.1

Chassis	Freightliner XC
Gross Vehicle Weight Rating (GVWR)	26,000
Gross Combined Weight Rating (GCWR)	30,000
Wheel Base	208"
Exterior Length (without ladder)	34'-5"
Exterior Height (with air conditioning)	12'-2"
Exterior Width (without mirrors)	101"
Interior Height	82"
Awning Size	18'
Fuel (gallons)	90
LPG (pounds)	104
Fresh Water (gallons)	50
Grey Water (gallons)	43
Waste Water (gallons)	43
Water Heater (gallons)	6
Furnace (BTUs)	35,000
Exterior Storage Capacity (cubic feet)	126



33.1



ONAN® 6000 WATT GENERATOR STD



300 HP CUMMINS® DIESEL STD.



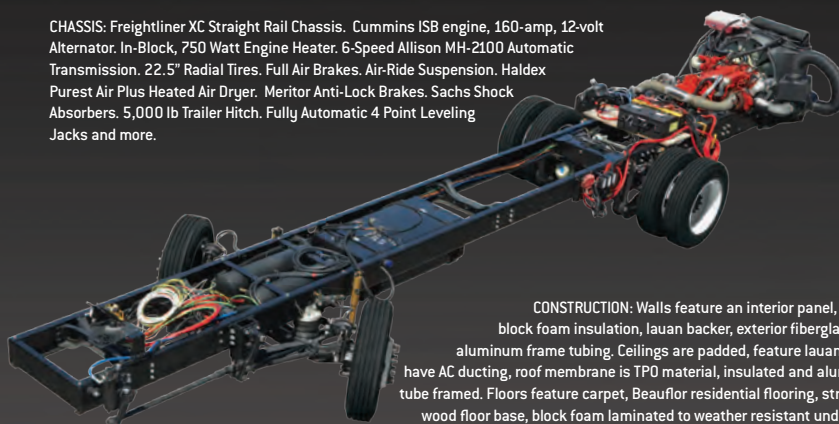
MUD ROOM COMPARTMENT AT ENTRY



## LUXURY AND CONVENIENCE ON THE ROAD

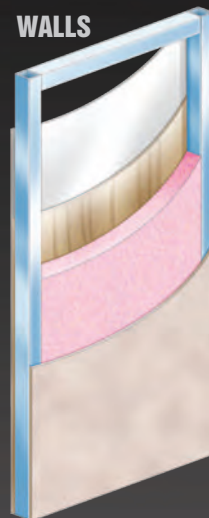
## IT'S WHAT YOU *don't see* THAT MATTERS

CHASSIS: Freightliner XC Straight Rail Chassis. Cummins ISB engine, 160-amp, 12-volt Alternator. In-Block, 750 Watt Engine Heater. 6-Speed Allison MH-2100 Automatic Transmission. 22.5" Radial Tires. Full Air Brakes. Air-Ride Suspension. Haldex Purest Air Plus Heated Air Dryer. Meritor Anti-Lock Brakes. Sachs Shock Absorbers. 5,000 lb Trailer Hitch. Fully Automatic 4 Point Leveling Jacks and more.

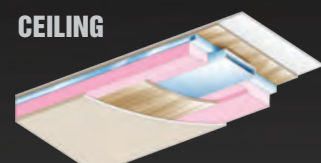


CONSTRUCTION: Walls feature an interior panel, 1-1/2" block foam insulation, luan backer, exterior fiberglass and aluminum frame tubing. Ceilings are padded, feature luan wood, have AC ducting, roof membrane is TPO material, insulated and aluminum tube framed. Floors feature carpet, Beauflor residential flooring, structure wood floor base, block foam laminated to weather resistant underbelly and steel rugged steel frame. All Thor Motor Coaches are built to higher standards, specifications and quality materials.

### WALLS



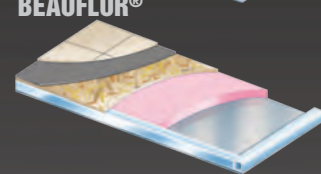
### CEILING



### CARPET



### BEAUFLO®



CINNAMON SHORE



GALLERIA



SUMMER PAVILION

IMPORTANT - PLEASE READ: Information published within this brochure reflects product design, fabrication, material, components and specifications at the date of printing. If your vehicle was manufactured before this brochure was published this information may not be accurate because vehicles assembled before the brochure was published may not have the same design, fabrication, materials, components and specification as represented in the brochure. If your vehicle was manufactured after this sales brochure was published the representations may not be accurate because, for product improvement reasons, we reserve the unilateral right, at any time, without prior notice, to make changes in product design, material, components and specifications. The date the brochure was published (i.e. "Julian date") is set forth on the last page of the brochure. IF CERTAIN INFORMATION PUBLISHED WITHIN THIS BROCHURE IS SIGNIFICANT TO YOUR PURCHASING DECISION, PLEASE CONSULT WITH YOUR SELLING DEALERSHIP TO CONFIRM THAT THE INFORMATION IS ACCURATE WITH RESPECT TO THE VEHICLE YOU ARE CONSIDERING PURCHASING. Photographs in the brochure may depict optional equipment or may only be available in certain floor plans. We reserve the right to make changes in prices and models and to discontinue models without notice or obligation. Components, appliances and the chassis may have been manufactured in a calendar year before the vehicle's designated model year. All capacities are approximate. The actual length of the vehicle may differ from that indicated in the brochure due to variances in the manufacturing processes and/or installed components. All dry weights are based on standard model features and do not include optional features or equipment. Components, appliances and features may differ to conform to local codes. Due to EPA environmental restrictions, engine power and torque ratings may change during any model year. The Thor Motor Coach logo and its design are registered trademarks. Other products and company names are trademarks and/or registered trademarks of their respective manufacturer. While the color of the motorhome's exterior and the interior fabrics depicted in this brochure are fair and reasonable depictions, the colors depicted may not be exact match of the actual colors because of variances in photo processing and printing. Component part and appliance manufacturers issue limited warranties covering portions of the vehicle not covered under the limited warranty we issue. To learn specific details regarding warranty coverage please consult your selling dealership or review the warranty packet inside the vehicle.

# STANDARD FEATURES *and* OPTIONS

## CONSTRUCTION & EXTERIOR

- One-piece fiberglass front and rear caps
- One-piece windshield
- Full-body paint with gel-coat walls
- Fiberglass storage compartments
- 1" baggage doors with slam latches (select areas)
- Side hinged flush mount radius luggage doors
- Electric patio awning
- Roof ladder
- Fully automatic hydraulic leveling jacks
- Rubber tread entry steps
- Automatic electric entry step
- Outside shower
- Dual fuel fills
- Low profile slide tray

## CONSTRUCTION & EXTERIOR OPTIONS

- Dual pane windows
- Invisible bra

## AUTOMOTIVE & COCKPIT

- Freightliner® XCS chassis
- Cummins® ISB diesel engine (300 hp., 660-ft./lb. torque)
- 22.5" tires with stainless steel wheel liners
- 10,000 lb. trailer hitch
- AM/FM dash radio with large buttons, CD player, weather band and back-up monitor
- Power front roller shade with accordion style side window shades
- Generator start switch on dash
- Ceiling mounted dome light with dash switch
- Leatherette driver and passenger captain's chairs
- Back-up camera with audio
- Side vision camera system
- Heated, remote exterior mirrors

- Fog lights
- PC workstation with 110-volt & 12-volt outlets

## AUTOMOTIVE & COCKPIT OPTIONS

- Six-way power driver seat

## INTERIOR

- Beauflor® residential flooring throughout
- Dual 13,500 BTU roof air conditioners
- Ceiling ducted air conditioning system
- Raised panel cabinet doors
- Hardware with nickel finish
- Soft touch vinyl ceiling
- Leatherette Euro-recliner with integrated ottoman
- Leatherette hide-a-bed sofa with air mattress
- Living area solar and blackout roller shades

## KITCHEN

- 18 cf. Whirlpool® residential refrigerator
- 3-burner high-output gas cooktop
- 30" Over the range Whirlpool® microwave oven
- Solid surface countertops
- Large double bowl sink w/ single lever kitchen faucet
- Pull-out countertop extension
- Pantry
- Full extension metal drawer guides
- Fantastic fan

## ENTERTAINMENT

- Always-in-View 32" LCD television in living room entertainment center
- DVD player with home theater sound bar
- 26" LCD television in bedroom
- HD/DSS satellite prep
- Cable television prep

## ENTERTAINMENT OPTIONS

- Exterior 32" LCD TV

## BEDROOM & BATHROOM

- Queen-size bed pillowtop mattress
- Bedspread and pillow shams
- Attractive headboard and sconce wall lighting
- China bowl toilet
- Over-sized shower with glass door

## SAFETY & CONVENIENCE

- Entry door with deadbolt lock
- Systems control center
- Smoke, LPG, carbon monoxide detectors
- Fire extinguisher
- Valve stem extenders on rear tires

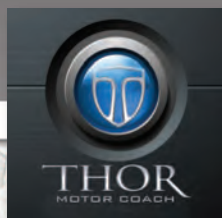
## ELECTRICAL & PLUMBING

- Onan® RV QD 6000 diesel generator
- Automatic generator start
- 2000-watt power inverter
- 6-gallon gas/electric water heater
- Battery disconnect switch
- Emergency start switch
- Four auxiliary house batteries
- 50-amp service power cord
- Water heater bypass system

## YOUR LOCAL TMC DEALER:



Go RVing.



SCAN THE QR CODE WITH YOUR SMART PHONE

P.O. BOX 1486 • ELKHART, IN 46515 • CUSTOMER SERVICE: 877-855-2867 • SALES DEPARTMENT: 800-860-5658 • [PALAZZORV.COM](http://PALAZZORV.COM)

COPYRIGHT THOR MOTOR COACH, INC. © 2011 (12/2011)

