



NITRO CIRCUS & CROSSROADS RV PRESENT

# ELEVATION



TESTED AND APPROVED BY NITRO CIRCUS

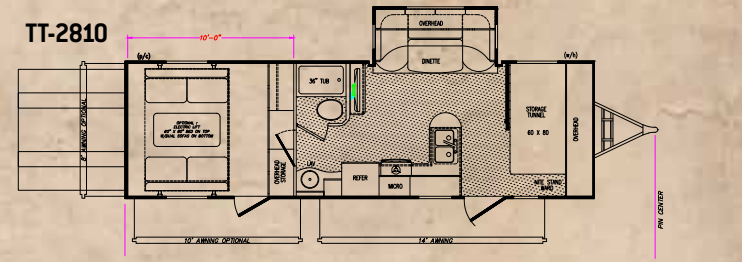
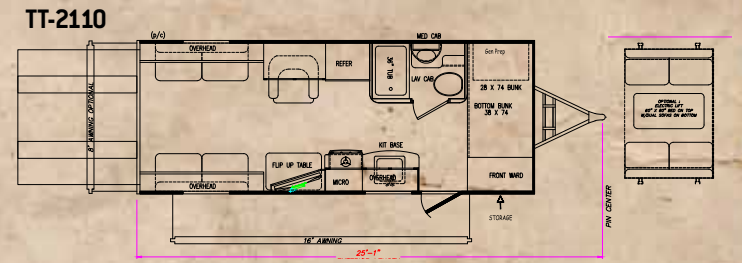
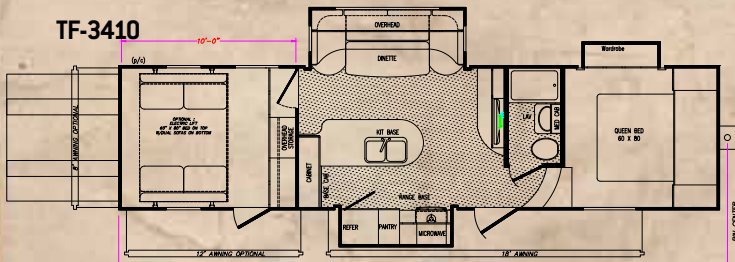
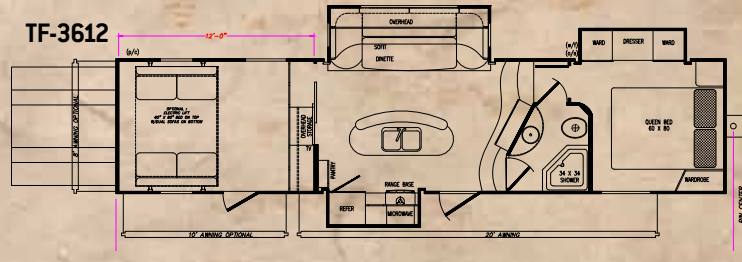
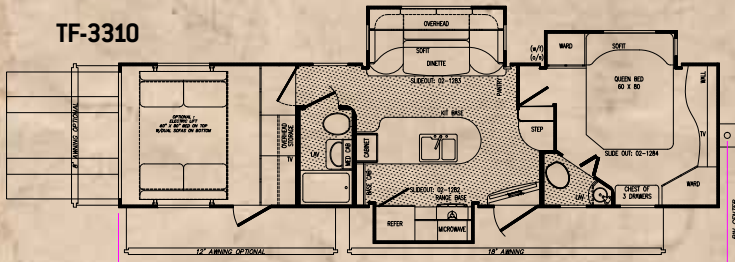


# ELEVATION NEW TOY HAULER FROM CROSSROADS RV

## ELEVATE YOUR EXPERIENCE!

The Elevation toy hauler was created to be towed by today's 1/2 ton and 3/4 ton vehicles without sacrificing interior living and garage space. Elevations creative and unique floor plans offer maximized luxury living space. More filling, travel trailer floor plans provide a 10' garage and the fifth wheel floor plans offer a 12' garage.

- ✓ Maximized living area
- ✓ Towed by existing vehicles
- ✓ Less weight-towed by 1/2 ton or 3/4 ton vehicles
- ✓ More filling-at least 10' or 12' garages
- ✓ Unique/Unshoppable floor plans
- ✓ Nitro Circus Tested and Approved



I FLIPPED WHEN I SAW IT



### ELEVATION FIFTH WHEEL STANDARDS INTERIOR

- 32" HD TV WITH BRACKET (VBF)
- 8' CEILING IN MAIN LIVING ROOM
- SLIDE-OUT
- 8 CUBIC FOOT REFRIGERATOR
- 22" OVEN WITH 3-BURNER RANGE
- MICROWAVE
- SOLID SURFACE KITCHEN COUNTER TOP
- NIGHT SHADES THROUGHOUT
- HIDE-A-BED SOFA
- QUEEN MEMORY FOAM MATTRESS
- NITRO CIRCUS CUSTOM SOUND SYSTEM (DVD, SUB WOOFER AND 8 SPEAKERS-6 INSIDE/2 EXTERIOR)
- 2ND A/C PREP
- 10 GALLON DSI WATER HEATER
- WATER HEATER BY-PASS
- FLOURESCENT LIGHTING THROUGHOUT
- FOOT FLUSH TOILET

- FIRE EXTINGUISHER
- LP DETECTOR
- SMOKE DETECTOR
- SKYLIGHT OVER SHOWER
- FANTASTIC FAN IN BATHROOM
- FANTASTIC FAN IN GARAGE
- 3-BAR STOOLS
- 22" DIAMOND PLATING ON GARAGE WALLS

### EXTERIOR

- POWER LANDING GEAR (4)
- POWER AWNING
- SIX SIDED ALUMINUM CONSTRUCTION
- TINTED SAFETY GLASS WINDOWS
- EXTERIOR CABLE/SATELLITE HOOK-UP
- 30 GALLON FUEL TANK WITH GUAGE AND TIMERSWITCH
- GENERATOR PREPARATION
- 16" ALUMINUM WHEELS

- 15,000 BTU A/C
- E-Z LUBE HUBS
- EQUA-FLEX SUSPENSION
- 3/8" ROOF DECKING
- 1 PIECE RUBBER ROOF
- 5" RADIUS ROOF RAFTERS
- 10" I-BEAM FRAME
- EXTERIOR PAINT PACKAGE
- 8' RAMP DOOR WITH TRANSITION (DOVETAIL)
- FULL SIZE SPARE TIRE
- LED DOCKING LIGHTS ON FRONT CAP
- 1" PLYWOOD CARGO FLOOR
- 2-SECURITY LIGHTS
- 2-REAR CARGO EXTERIOR LIGHTS
- BLACK TANK FLUSH
- 30" RADIUS ENTRY DOOR
- 22" DIAMOND PLATING
- 75 AMP CONVERTER
- 50 AMP SERVICE

- 110 GALLON FRESH WATER TANK
- 80 GALLON GREY WATER TANK
- 40 GALLON BLACK WATER TANK

### ELEVATION FIFTH WHEEL OPTIONS

- 5.5 GENERATOR
- HAPPY JACK BEDS
- SECOND A/C IN BEDROOM
- 2ND POWER AWNING
- 32" LCD HD TV IN BEDROOM
- 32" LCD HD TV IN GARAGE
- SCREEN DOOR FOR GARAGE
- TRAILAIRE HITCH
- WORK STATION IN GARAGE

NOTE: Standards, options and specifications are subject to change without notice. All Standards and optional features vary by production date. Photography is only accurate from time of printing. Please contact your Elevation dealer for most current details and pricing. All CrossRoads products are covered by a Limited Warranty. © 2011 CrossRoads RV, Inc.



**TRAVIS PASTRANA**  
NITRO CIRCUS FOUNDER & X-GAMES ROCK STAR