

Clipper



**Clipper Ultra Light
Conventional Travel Trailer**

Clipper Ultra Light Conventional Travel Trailer

STANDARD FEATURES

Chassis

Powder Coated I-Beam Frame
Ultra Lube Leaf Spring Axles
Electric Brakes
E-Z Crank Tongue Jack
Dual Battery Rack
Heavy Duty Safety Chains
Radial Tires
Tube Style Storage Bumper
Rear Stabilizing Jacks
Spare Tire
Galvanized Wheel Wells

Exterior

.024 Mesa Aluminum Exterior
Diamond Plate Front Wall Protector
1 Piece Radius Door w/Window
Radius Tinted Safety Glass Windows
Patio Light
110V Exterior Recept
Radius Locking Baggage Door
Radius Trussed Roof

1 Piece Rubber Roof
6 Sided R-7 Insulation
A & E Awning

Interior

Residential Grade Flooring
Lumbercore Cabinetry
Brazilian Cherry Cabinetry
Mortise and Tenon Cabinet Doors
High Pressure Laminated Countertops
High Neck Sink Faucet
Extra Deep Kitchen Sink
Microwave
Lighted Range Hood
2 Burner LP Range
3 Cu. Ft. Dometic® Refrigerator
AM/FM/MP3/ USB Stereo
TV Antenna w/Booster
HDTV Cable Hook-up
6 Gal. DSI Water Heater
13,500 BTU A/C
Mini Blinds
Window Valances

LP/C02 Detector
Fire Extinguisher
Smoke Detector
20,000 BTU Furnace

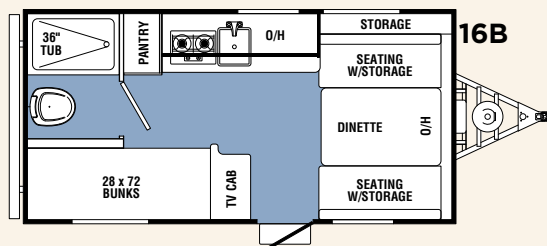
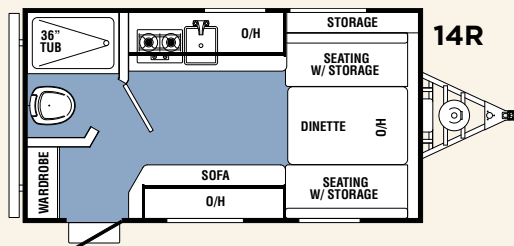
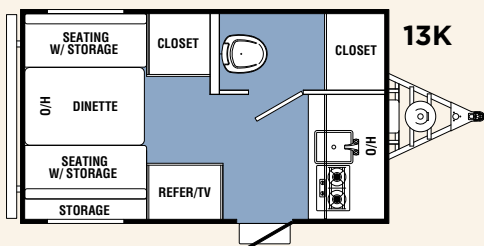
Towable Essentials Package (Mandatory)

3 Cu. Ft. Dometic® Refrigerator
13,500 BTU A/C
Spare Tire
20,000 BTU Furnace
6 Gal. DSI Water Heater
Rear Crank Down Scissor Style
AM/FM/MP3/ USB Stereo
A & E Awning
Rear Stabilizing Jacks
Electric Brakes

Options

Delete Air Conditioner
Front Window w/Rock Guard (14R & 16B)

FLOOR PLANS



SPECIFICATIONS

	13K	14R	16B
Hitch Weight	350 Lbs.	312 Lbs.	290 Lbs.
Ship Weight	2213 Lbs.	2335 Lbs.	2421 Lbs.
GVWR	3500 Lbs.	3532 Lbs.	3510 Lbs.
Cargo Capacity	1287 Lbs.	1180 Lbs.	1072 Lbs.
Exterior Length (add 10 1/4" for Spare)	15' 8"	17' 6"	18' 7"
Exterior Width	88"	88"	88"
Exterior Height*	9' 8"	9' 8"	9' 8"
Interior Height	76"	76"	76"
Fresh Water Capacity**	33 Gal.	33 Gal.	33 Gal.
Grey Water Capacity	25 Gal.	25 Gal.	25 Gal.
Black Water Capacity	32 Gal.	25 Gal.	25 Gal.
Tire Size (Radial)	13"	13"	13"
Coupler Size	2 5/16"	2 5/16"	2 5/16"

* With Air Conditioner **Including Water Heater

Big benefits for new owners

FREE One Year Membership - Coachmen Owners Association! Coachmen is proud to sponsor the largest manufacturer sponsored camping club in North America ... Coachmen Owners' Association (COA). COA provides you a world of ways to enjoy your RV. This is FUN ON OVERDRIVE and provides: Free Trip Routing, Exciting Tours & Rallies, Free Campground Directory, Local/State Club Activities, Easy RVing Magazine Free, Theme Park Discounts, Fuel Discounts, Free onebigplanet® Memberships with discounts at 180,000 merchants and Much More!



Every new Coachmen RV buyer is eligible for a 1 Year FREE membership in the Coachmen Owners' Association. It all adds up to an easy ownership experience!

Travel Easy™ Roadside Assistance



RVing is easier with Coachmen's Travel Easy™ Roadside Assistance provided FREE the first year of ownership to those who purchase a New Coachmen RV. Administered by CoachNet, this service provides you with 24/7 operational, technical and emergency road service coverage. Also included is towing, fuel delivery, jump starts, lockout service, tire changes, mobile mechanic and unlimited technical assistance. Anywhere. Anytime. Travel Easy™ is the security of knowing that help is an easy phone call away.



Learn More
Scan this barcode using a QR Reader on your smart phone to learn more about Forest River.



A Berkshire Hathaway company.

Coachmen RV

A Division of Forest River Inc.

423 N. Main St.
P.O. Box 30
Middlebury, IN 46540

Your Dealer:



To learn more about Coachmen RV and our products and see how Coachmen is making the easy life easier, visit www.coachmenrv.com

All information contained in this brochure is believed to be accurate at the time of publication. However, during the model year, it may be necessary to make revisions and Coachmen reserves the right to make all such changes without notice, including changes in prices, colors, materials, equipment and specifications, as well as the addition of new models and the discontinuance of models shown in this brochure. Therefore, please consult with your Coachmen dealer and confirm the existence of any materials, design or specifications that are material to your purchase decision.