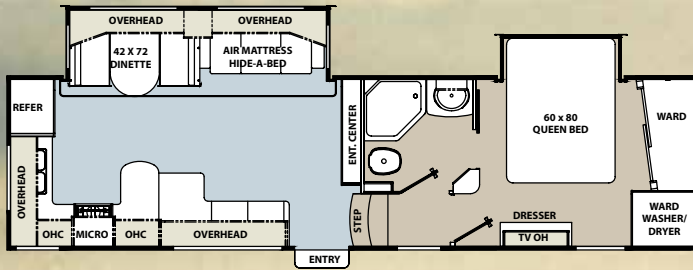


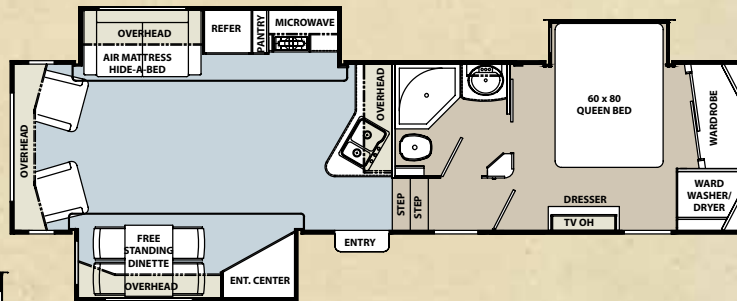
BROOKSTONE

Ruby 

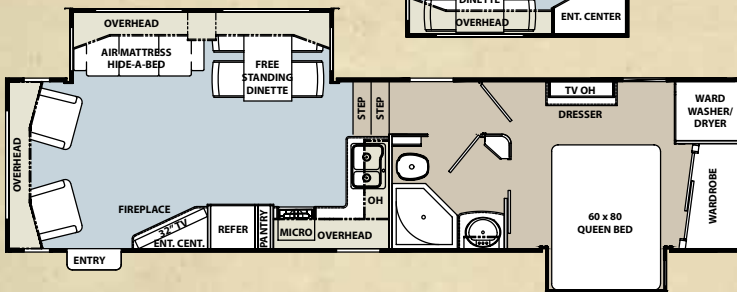
290 LS



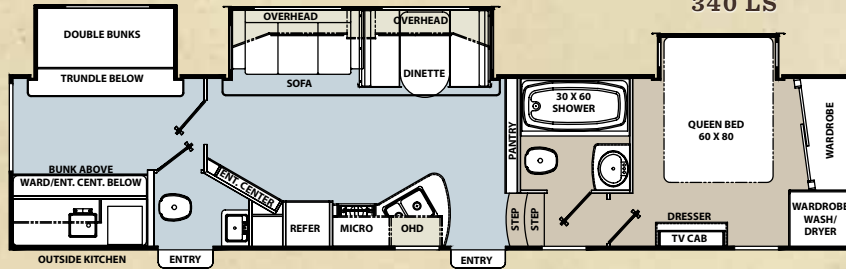
295 LS



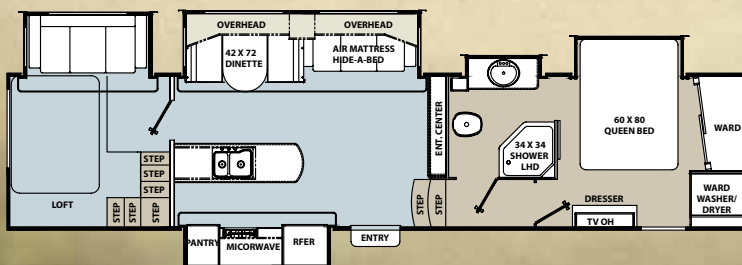
285 LS



340 LS



353 LS



 **Coachmen**
Life should be so easy.

BROOKSTONE RUBY EDITION STANDARDS & OPTIONS

INTERIOR

- Solid Hard wood Hickory Cabinet doors and stiles (frames)
- Beauflor Flooring throughout kitchen and bathroom
- Residential carpet and padding
- 32" HD LCD TV
- FM/CD/DVD player with 5.1 surround sound
- Digital RV antenna with booster
- Magic night sleep system air mattress hide-a-bed sofa
- (2) swivel, rocker recliners (N/A 353LS, 340LS)
- Full extension ball bearing drawer guides
- 6'7" tall living area slide outs with oversized overhead cabinets
- Day/night shades (living area)
- Oil rubbed bronze hardware
- Ceiling fan with light kit
- Systems monitor panel
- Satellite prep
- Carbon monoxide detector

EXTERIOR

- Aluminum wheels
- Hydraulic slide outs
- 165 cu. ft. extra-large drop frame pass through storage area
- Extra-large entry handle
- Solar reflective mirror finish windows
- Under mount spare tire and carrier
- Independent power front jacks with dual motors
- Power awning
- Power rear jacks
- Trail air equa flex suspension
- 7000 lbs axles with 8 lug hubs
- Patio scare lights
- 50 amp service and detachable power cord
- 30" entry door
- Extra large, insulated, radius bus style slam latch baggage doors
- Exclusive one piece docking station
- Black tank flush
- Outside speakers
- Snap jack pins
- Laminated floor construction
- Ducted forced air heated holding tanks, water lines, and dump valves along with enclosed and insulated underbelly

- Attic vents
- 40,000 BTU furnace with automatic ignition
- 15,000 BTU air condition with quick cool
- 10 gal. DSI gas/electric water heater
- Engineered frame with front cap with Turn Tec Technology
- Aluminum framed vacuum bonded sidewalls and floor
- Whole coach water filtration system
- 12V battery disconnect
- Roof ladder

GALLEY

- 22" oven with high output range and automatic igniter
- DuPont Corian counter tops with sink covers
- Extra-large 8 cubic foot double door refrigerator
- 30" wide residential size microwave
- Extra-large full extension drawers
- Full padded back chairs with storage underneath and dinette table
- Lighted power range hood

BEDROOM

- Spa inspired reversible bedding package with accent pillow and bed scarf
- Extra-large dresser with residential size drawers
- Over head reading lights
- Windows for cross ventilation
- Wire and frame for 2nd AC
- Exclusive angled front wardrobe for maximum walk around space
- Armoire with washer/dryer prep for stackable washer/dryer
- Residential 60" x 80" Serta Queen Mattress

BATHROOM

- Power bath vent
- Neo-angled shower with glass surround and adjustable shower head
- Residential 40" vanity height with mirrored medicine cabinet
- Porcelain toilet with foot flush pedal
- Heat and air conditioning ducts in every bathroom for comfort

COACHMEN CONVENIENCE PACKAGE

- Solar Reflective windows with mirror finish
- Glass shower door
- Day/Night shades
- 50 amp service
- 10 gal DSI water heater
- Deluxe porcelain toilet
- Extra-large 8 cu. ft. double door refrigerator
- Black tank flush
- Undermount spare tire and carrier
- Outside shower
- Washer/dryer prep
- Outside speakers
- Ceiling fan
- 22" oven with broiler
- Residential Serta Queen Mattress
- Digital TV antenna w/ booster
- Exterior convenience center
- Turn Tec Front cap and chamford frame
- Independent front jacks with dual motors
- Rear power jacks
- Power awning
- DVD/CD with 5.1 surround sound
- Beauflor flooring
- 30" microwave
- 15k BTU AC
- 32' HD LCD TV
- Slam latch baggage doors
- Corian countertops
- Full extension drawer glides

POPULAR OPTIONS

- Dual pane widows
- Solar panel prep
- Booth dinette
- 32" bedroom LCD TV
- Central Vac
- Electric Fireplace
- 2nd 13.5k BTU A/C in Bedroom
- Power vent fan
- Generator ready
- Arctic eskimo package
- CSA upfit
- Roadside assistance



YOUR BROOKSTONE DEALER

Coachmen RV, a division of Forest River, a Berkshire Hathaway Company,
423 N. Main St., Middlebury, IN 46540

To learn more about Coachmen RV and our products and see how
Coachmen is making the easy life easier, visit www.coachmenrv.com

All information contained in this brochure is believed to be accurate at the time of publication. However, during the model year, it may be necessary to make revisions and Coachmen reserves the right to make all such changes without notice, including prices, colors, materials, equipment and specifications as well as the addition of new models and the discontinuance of models shown in this brochure. Therefore, please consult with your Coachmen dealer and confirm the existence of any materials, design or specifications that are material to your purchase decision. ©Copyright 2011 Coachmen RV a Division of Forest River Inc - All Rights Reserved