


CAMBRIA

2012 







28T Smoke Screen with Forest Cherry



30C Harvest with Honey Cherry

THE QUEST FOR COMFORT

Looking for a touring vehicle that provides all the comforts of home with superior automotive performance and the versatility you demand? Your search ends here. The 2012 Itasca Cambria® is a Class C powerhouse that ensures you the well-being, luxury and functionality you have come to expect from Winnebago Industries.®

The two masterfully designed floorplans each come with a large skylight/roof vent and a loaded entertainment center that includes a

26" LCD TV, home theater sound system and DVD player. Expand the living area by rotating the cab seats to face the couch and dinette. We even added an innovative new trunk to let you bring more of what makes you feel at home.

Of course, you'll find many stylish touches throughout your Cambria that make you feel at home—no matter where you are. Find a successful conclusion to your quest for comfort in the 2012 Itasca Cambria.

Why Cambria?

- Sleek, easy-to-handle touring coach
- Double- and triple-slide floorplans
- Numerous dinette and sofa options
- Easy-care vinyl flooring in living area
- Swivel cab seats improve livability (standard 28T, optional 30C)
- New rear trunk exterior storage
- Winnebago Industries' quality reputation



DESIGNED FOR ENTHUSIASTS

Owners love their Itasca motor homes, and with good reason. The RV Dealers Association annually bestows the Quality Circle Award based on dealer ratings to manufacturers that provide exceptional products, service and support. Only one manufacturer has received this award for sixteen consecutive years: Winnebago Industries,® proud manufacturer of the Itasca Cambria.

SPACIOUS, EFFICIENT, AND STYLISH

Preparing sumptuous fare is easy in the Cambria's well-appointed kitchen, which offers a generous refrigerator, three-burner range top with added storage below, microwave oven with vented range fan, and fully-extendable drawers. Two fabulous dining options include either the U-shaped dinette (28T) or the available BenchMark® dinette (30C), which are both available in beautiful, durable Ultraleather.™ 2012 also introduces a gorgeous new cabinetry option—Coffee-Glazed Vienna Maple—which evokes the luxury and feeling of classical European architecture.

Just like home, it's the details that make the difference. You may choose to add the available filtered cold water faucet and the stainless steel microwave/convection oven with range fan. System controls are all conveniently located in the OnePlace® systems center to make life easier. The available interior upgrade package adds additional styling elegance, complete with intimate rope lighting, an elegant backsplash, the ultra-versatile MCD American Duo® solar/blackout roller shades, the easily adjustable Dream Dinette™ table (30C), along with carpet floor mats and a classy dash appliqué.



The BenchMark full-comfort dinette (optional 30C) is so much more. With its innerspring seat construction for residential-style comfort and easy flip-up storage, you'll enjoy cozy dining and a comfortable bed when needed.



DISCOVER THE DIFFERENCE

The difference is in the details. Explore the exceptional features and technologies that go into making Itasca motor homes simply the best.



The **U-Shaped Dinette** is the perfect place to enjoy a family meal or gather around for movie night (28T).



All sofa beds are not created equal. The **Comfort Sofa Sleeper** is wrapped in durable Ultraleather, easily converts to a bed, and has a self-inflating mattress so cozy, your guests won't want to leave.



With an 11 cu.-ft. **Rear Storage Compartment**, complete with a wash station and electrical hookups for easy access, you'll never have to crawl on your hands and knees to get what you need.



Live up the campsite with the available **Exterior Entertainment Center** that features an LCD TV, DVD player, stereo and speakers in a lockable compartment.



With our available smoothly retracting **MCD American Duo® Solar/Blackout Roller Shades** you can control just how much light and privacy you want—no matter the time of day. MCD Solo® shades come standard.



It's a sofa, it's a lounge, it's a bed; it's the **Rest Easy® Multi-Position Lounge**. This year we added a removable table that conveniently stores within the sofa arm (28T). What will we think of next?



Accurate readings are assured with the **TrueLevel™ Holding Tank Monitoring System** that uses sonar technology to gather data without probes that can corrode.



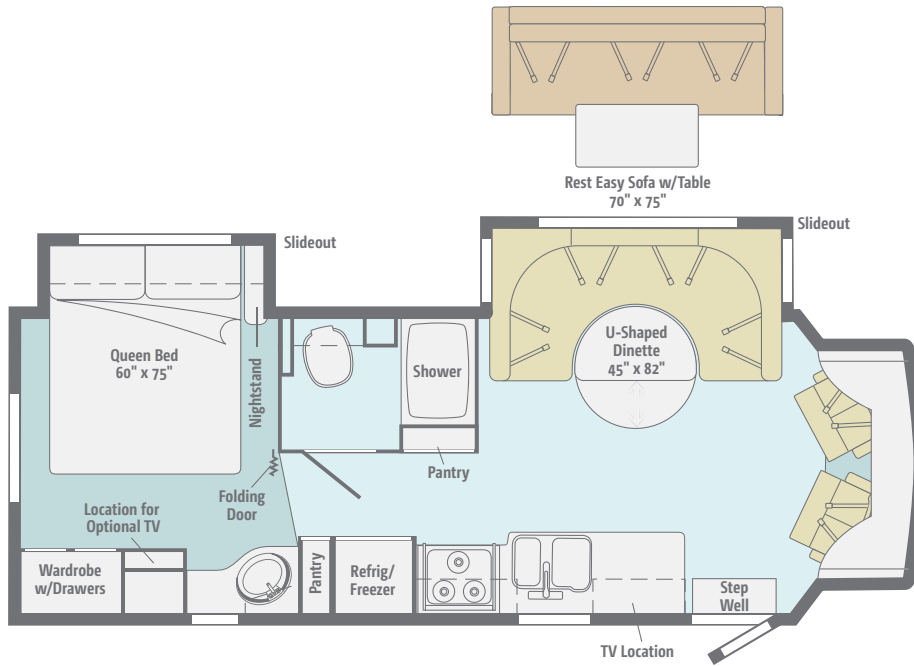
The **RV Radio® and Available Rearview Monitor** combine to engage all your senses. Touch the 6.5" LCD touch screen; hear the AM/FM, weather band, CD, and MP3; and see safely behind you.



Goltasca.com is your resource for web-exclusive content and all the details you can't fit in a brochure!

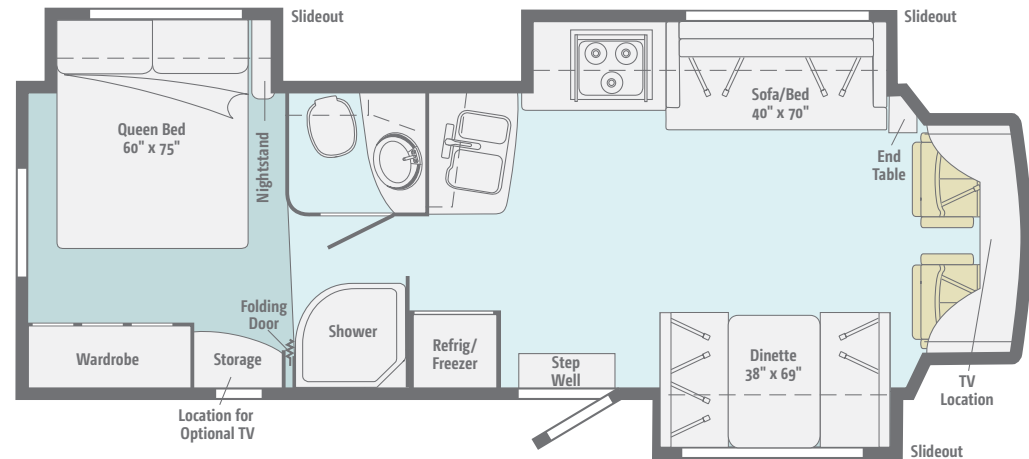
FLOORPLANS & SPECIFICATIONS

Dimensions shown are for sleeping space only and may vary due to styling differences. Dashed lines denote overhead storage areas. Floorplans and specifications are also available online at Goltasca.com.



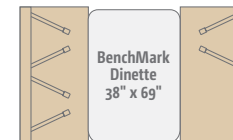
28T Highlights **NEW**

The U-shaped dinette takes center stage, providing an elegant setting for meals while putting you in an excellent position to watch movies on the LCD TV. Swiveled cab seats further expand your living area.



30C Highlights

A triple-slideout design creates a large living area with a dinette and sofa/bed. A private master bedroom and the available Comfort Sofa Sleeper make this a great choice for traveling with extra companions.



Experience the Cambria in action—take a virtual tour at Goltasca.com.

Ford® E450 Chassis

305-hp 6.8L Super-Duty V10 SEFI Triton® engine

TorqShift™ 5-speed automatic transmission

120-amp. alternator

4-wheel ABS

Trailer Hitch⁵ 5,000-lb. drawbar/350-lb. maximum vertical tongue weight and wiring w/7-pin connector

Stainless steel wheel liners

Optional Equipment

Rear auxiliary air springs

Automatic hydraulic leveling jacks (front and rear)

Stylized aluminum wheels

Cab Conveniences

Cab Seats armrests, lumbar support and multi-adjustable slide/recline

Cab seats w/swivel pedestal (28T)

RV Radio® AM/FM stereo, CD player, weather band, iPod/MP3 input, remote

Chassis/house battery radio power switch

Tilt steering wheel

Cruise control

Power steering

12-volt powerpoints

Power door locks

Sunvisors

Power exterior mirrors w/defrost

Optional Equipment

Cab seats w/swivel pedestal (30C)

RV Radio/rearview monitor system 6.5" LCD touch screen color monitor, CD player, weather band, handheld remote, iPod/MP3 input, color camera w/one-way audio, satellite-ready

Sirius® satellite radio system 6-month complimentary subscription, iPod interface connector

Interior

Home Theater Sound System receiver, DVD player, amplifier, 5 speakers, subwoofer

26" LCD TV

Satellite system ready

Video selection system

Front privacy curtain

MCD American Solo® blackout roller shades (lounge, dinette and bedroom)

Mini blinds (galley)

Soft vinyl ceilings

Tinted windows

Amplified digital HDTV antenna

OnePlace® systems center

Powered roof vent (bath)

Roof vent (lounge & bedroom)

Key-activated slideroom master lock switch

Optional Equipment

Skylight w/sliding screen, shade and vent

Interior Upgrade Package rope lighting, galley backsplash, dash and beverage tray appliqué, Dream Dinette™ adjustable table (30C), carpet floor mats in the cab, decorative picture, 2 galley sink covers, range cover, raised-panel stile-and-rail refrigerator door insert, 2 sofa throw pillows (30C), MCD American Duo® solar/blackout roller shades in the lounge, dinette and bedroom

Tinted, dual-glazed, thermo-insulated windows

Satellite TV antenna system

King-Dome® HD-ready in-motion satellite dish antenna system

Powered roof vent (bedroom)

Carpet in lounge and dining area

Kitchen

Thermo-formed laminated countertops

Flip-up countertop extension (30C)

2-door refrigerator/freezer

3-burner range top w/storage below

Microwave oven w/vented range fan

Optional Equipment

Cold water filtration system

Stainless steel microwave/convection oven w/range fan

Bath

Thermo-formed laminated countertop

Skylight

Flexible showerhead

Curved textured glass shower door (30C)

Retractable, self-cleaning shower screen (28T)

Porcelain toilet

Water pump switch

Bedroom

Queen bed w/foam mattress, headboard, bedspread, pillows and pillow shams

Optional Equipment

19" LCD TV, DC

Exterior

Porch light w/interior switch

Automatic entrance step

Stepwell light w/interior switch

Premium high-gloss skin

Rear mud flaps

Fiberglass running boards w/wheel lips

Optional Equipment

Entertainment Center 26" LCD TV, AM/FM stereo, DVD player w/remote, 2 speakers, lockable compartment, radio antenna

Power patio awning w/metal wrap

Heating & Cooling System

13,500 BTU roof-mount, high-efficiency air conditioner

30,000 BTU low-profile, ducted furnace

Optional Equipment

A/C heat pump

Electrical System

Exterior AC duplex receptacle and TV jack

AC/DC load center, 45-amp. converter/charger

Power Cord Compartment 30-amp. power cord, shoreline/generator automatic changeover switch

Coach battery disconnect system

Automatic dual battery charge control

Auxiliary start circuit

Two deep-cycle, Group 31 batteries

Optional Equipment

4,000-watt Cummins Onan® MicroQuiet™ gas generator

300-watt DC/AC inverter

Plumbing System

Rear Trunk w/Service Center cable TV input, portable satellite dish hookup, city water hookup w/diverter valve, exterior wash station w/lighted pump switch

Drainage valve compartment

10' sewer hose

6-gallon electric ignition, 110V/LP water heater w/Energy Management System (EMS)

Winterization Package water heater bypass valve and siphon tube

Permanent-mount LP tank w/gauge

Heated holding-tank compartment

On-demand water pump

TrueLevel® holding tank monitoring system

Safety

Seat belts

Driver and passenger air bags

Child seat tether anchor (dinette)

LP, smoke and carbon monoxide detectors

10 BC fire extinguisher

Ground fault interrupter

High-mount brake lamps

Warranty⁶

12-month/15,000-mile basic warranty⁷

36-month/36,000-mile limited warranty on structure⁷

10-year limited parts-and-labor warranty on roof skin⁷

¹ The height of each model is measured to the top of the tallest standard feature and is based on the curb weight of a typically equipped unit. The actual height of your vehicle may vary by several inches depending on chassis or equipment variations. Please contact your dealer for further information.

² The load capacity of your motor home is designated by weight, not by volume, so you cannot necessarily use all available space when loading your motor home.

³ Capacities are based on measurements prior to tank installation. Slight capacity variations can result due to installation applications.

⁴ Capacities shown are tank manufacturer's listed water capacity (W.C.). Actual filled LP capacity is 80% of listing due to overfilling prevention device on tank.

⁵ Actual towing capacity is dependent on your particular loading and towing circumstances which includes the GVWR, GAWR, and GCWR, as well as adequate trailer brakes. Please refer to the Operator's Manual of your vehicle for further towing information.

⁶ See separate chassis warranty.

⁷ See your dealer for complete warranty information.

NA Not Available

Not all items available in combination. See dealer for details.

Winnebago Industries® continuing program of product improvement makes specifications, equipment, model availability, and prices subject to change without notice. Comparisons to other motor homes are based on the most recent information available at printing.

Weights & Measures

	28T	30C
Length	29'10"	31'10"
Exterior Height ¹	10'9"	10'8"
Exterior Width	7'11"	7'11"
Exterior Storage ² (cu. ft.)	34.1	34.8
Awning Length	19'	19'
Interior Height	6'5"	6'5"
Interior Width	7'8"	7'8"
Freshwater Capacity w/Heater ³ (gal.)	35	35
Holding Tank Capacity - Black/Gray ³ (gal.)	26/34	26/34
LP Capacity ⁴ (gal.)	18	18
Fuel Capacity (gal.)	55	55
GCWR ⁵ (lbs.)	22,000	22,000
GVWR (lbs.)	14,500	14,500
GAWR - Front (lbs.)	5,000	5,000
GAWR - Rear (lbs.)	9,600	9,600
Wheelbase	200"	220"

NO SHORTCUTS — NO COMPROMISES

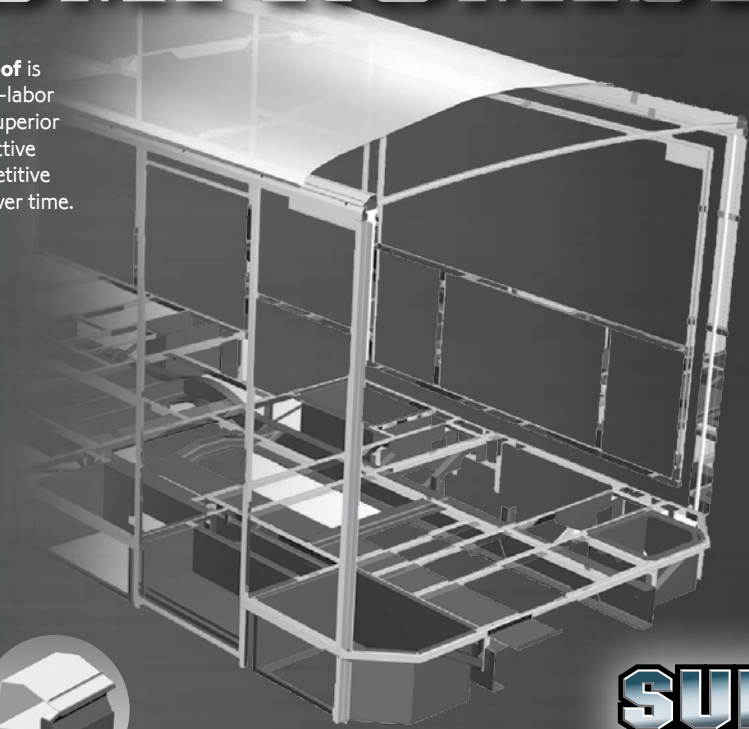
The crowned, one-piece **fiberglass roof** is backed by a 10-year limited parts-and-labor roof skin warranty. Fiberglass offers superior strength and durability over less attractive rubber roofs found on so many competitive models that can streak and degrade over time.

Durable, lightweight **Thermo-Panel® sidewalls** combine fiberglass, high-density block-foam insulation and the inner wall surface with aluminum support structures.

Metal substructures secure cabinets and appliances to add safety and stability.

An **electrodeposition coating** helps protect critical steel components.

Specially engineered **interlocking joints** connect the floor, sidewalls and roof into a cohesive unit.



SUPER STRUCTURE®

TAKE A TOUR



We're proud of our processes, state-of-the-art facilities and the people who make Winnebago Industries number one. We invite you to visit our complex in Forest City, Iowa, for a first-hand look at the dedication and technology behind every motor home we build.



You can compare features. You can compare styles. But when it comes to quality construction, there is no comparison. Only motor homes manufactured by Winnebago Industries harness the legendary strength and durability of our SuperStructure® construction process—a process we've been perfecting for more than 50 years.

SuperStructure means a solid framework, steel and aluminum substructures and components built in-house to our exacting

standards. It means managing each detail to ensure the integrity and quality of every coach. It means barcoding parts to save time and frustration during service and running every coach through a high-pressure leak test before it leaves the factory.

Where other manufacturers cut corners, SuperStructure ensures the features you can't see are treated with the same care as the ones you can. When you buy an Itasca motor home, you are getting a coach that is built for you—and built to last.

EXTERIORS

The Cambria comes standard with fiberglass running boards, a power entrance step and your choice of deluxe graphics or available full-body paint.



Granite
DELUXE GRAPHICS



Windveil Blue
DELUXE GRAPHICS



Mineral Gray
FULL-BODY PAINT



Mahogany
FULL-BODY PAINT



Ascot Green
FULL-BODY PAINT

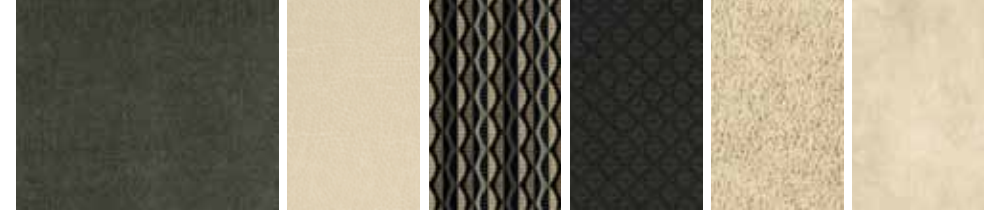


Smoke
FULL-BODY PAINT

DÉCOR

Choose from three fabric collections. Upgrade to Ultraleather™ furniture for luxurious comfort that is both durable and easy to clean. The cabinetry comes in your choice of Honey Cherry, Forest Cherry, or Coffee-Glazed Vienna Maple finish with satin nickel hardware for a warm, inviting interior.

Smoke Screen *A rich blend of colors for an exceptionally elegant ambiance.*



Main

Surfside
Ultraleather

Accent

Bedspread

Carpet

Driftwood
Wall Board

Harvest *Earth tones that make you feel at home wherever you are.*



Main

Wheatfields
Ultraleather

Accent

Bedspread

Carpet

Sage
Wall Board

Plateau *Inspired by traditional southwestern art to set the stage for each new day.*



Main

Manilla
Ultraleather

Accent

Bedspread

Carpet

Sashay
Wall Board



Honey Cherry

Forest Cherry

Coffee-Glazed
Vienna Maple

Laguna Pebble Countertop
Omnova

Fabrics and carpets may change without notice or obligation.

DON'T MISS OUT



Caravans, rallies, local and state events, and exclusive RV travel benefits can all be yours as a WIT Club member—and you can meet like-minded folks that possess the same enthusiasm for traveling this great nation of ours. It's a wonderful way to make your Cambria a way of life. Learn more about the Winnebago-Itasca Travelers Club at WITclub.com.

Members enjoy:

- Caravans and Rallies
- Local and State Group Activities
- RV Travel Benefits



Four simple questions to ask *before* you buy.

visit BetterBuiltRVs.com

COMMITTED TO SERVICE

We back our motor homes with best-in-class support both before and after the sale:



- 12-month/ 15,000-mile basic limited warranty
- 36-month/36,000-mile limited warranty on structure
- 10-year standard limited parts-and-labor roof skin warranty
- Complimentary 24-hour roadside assistance program
 - RV Technical Assistance Hotline
 - RV Service Appointment Assistance
 - Emergency Trip Interruption
 - Emergency Message Service
 - Nationwide Trip Routing
 - Fee-Free Travelers Cheques
- TripSaver Fast Track Parts guarantees that in-stock warranty parts ship directly to your dealer within 24 hours
- National dealer service network



THE MOST RECOGNIZED NAME IN MOTOR HOMES*

NYSE: WGO

Goltasca.com



For Sales and Service Information Contact: